



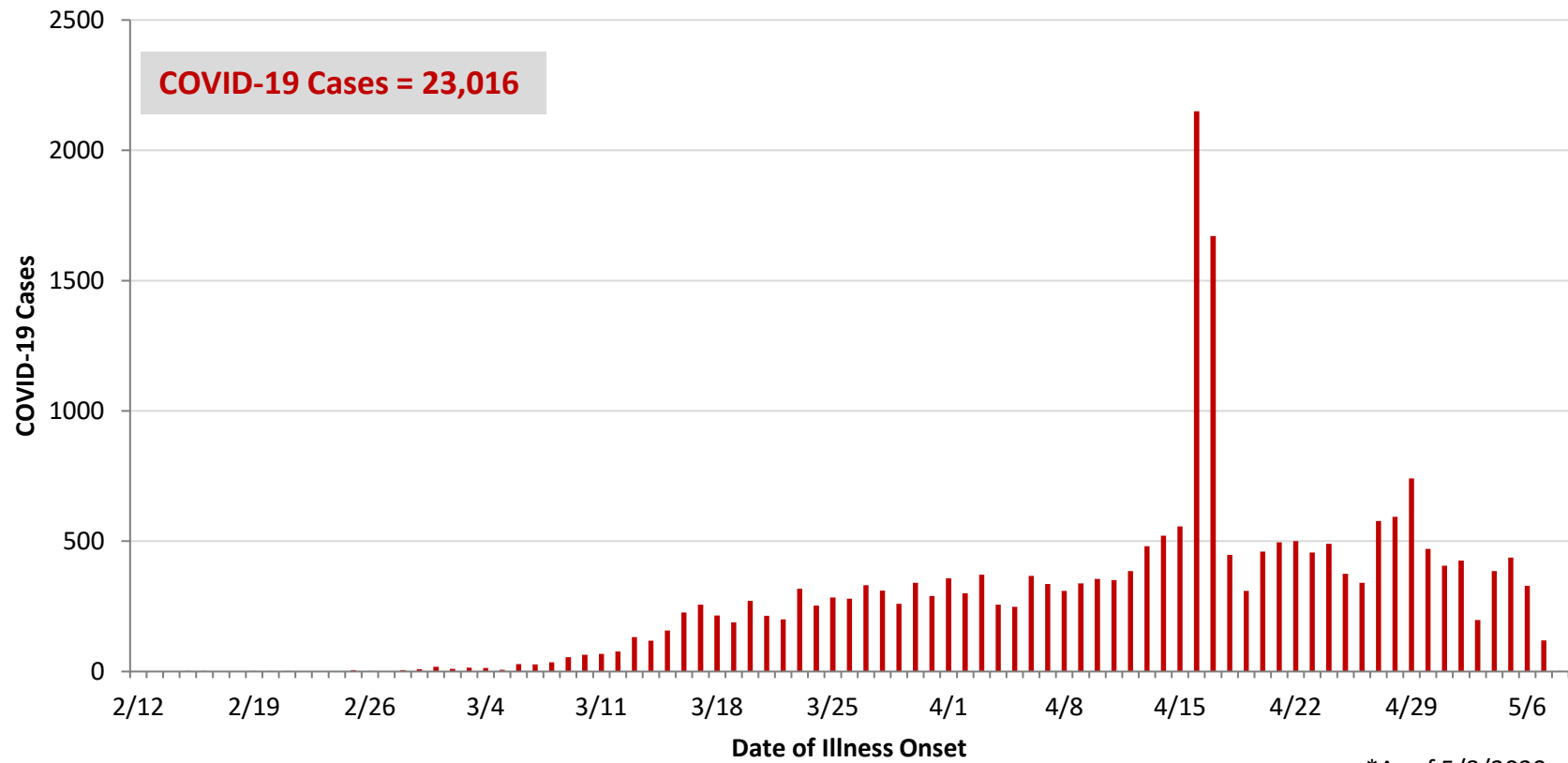
**Ohio, West Central Ohio (WCO), and Montgomery County COVID-19 Cases
As of 5/8/20**

Source: The State of Ohio COVID-19 Dashboard, Ohio Department of Health

Ohio:

Preliminary COVID-19 Cases Ohio, As of 5/8/2020		
Sex	# Cases	% Cases
Female	10,333	45%
Male	12,556	55%
Unknown	127	1%
Total	23,016	100%
Age Group		
Age Group	# Cases	% Cases
0-19	687	3%
20-29	2,939	13%
30-39	3,683	16%
40-49	3,711	16%
50-59	3,951	17%
60-69	3,311	14%
70-79	2,169	9%
80+	2,553	11%
Unknown	12	0%
Total	23,016	100%
Hospitalized		
Hospitalized	4,218	18.3%
Deaths		
Deaths	1,306	5.7%
Age Group		
Age Group	Deaths	% of Deaths
0-19	0	0%
20-29	2	0%
30-39	8	1%
40-49	20	2%
50-59	74	6%
60-69	190	15%
70-79	342	26%
80+	670	51%
Total	1,306	100%

**PRELIMINARY COVID-19 Cases by Date of Illness Onset
Ohio, 2/12/20 - 5/8/20***

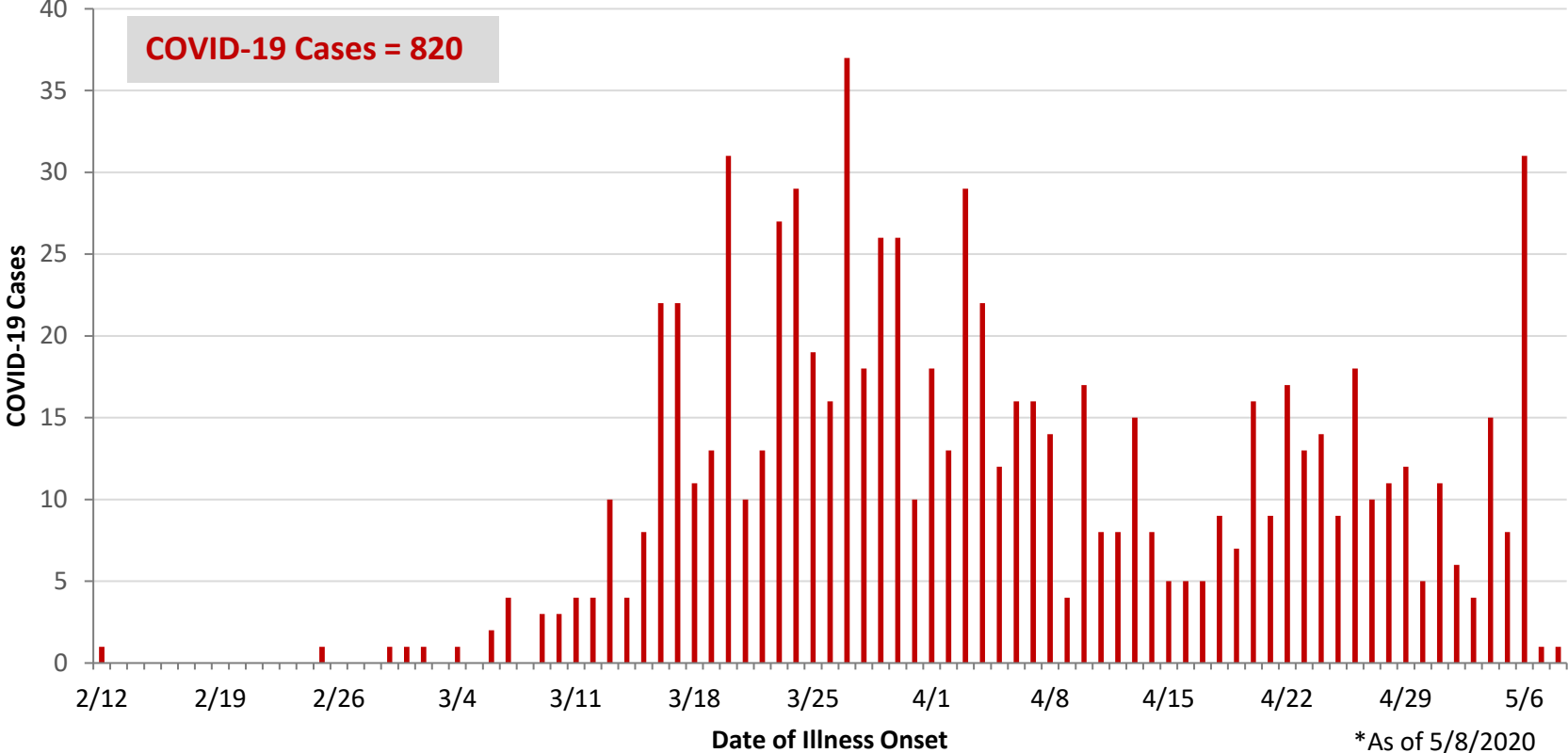


*As of 5/8/2020

WCO:

Preliminary COVID-19 Cases West Central Ohio, As of 5/8/2020		
County	# Cases	% Cases
Champaign	16	2%
Clark	80	10%
Darke	82	10%
Greene	52	6%
Miami	176	21%
Montgomery	356	43%
Preble	27	3%
Shelby	31	4%
Total	820	100%
Sex		
Sex	# Cases	% Cases
Female	446	54%
Male	359	44%
Unknown	15	2%
Total	820	100%
Age Group		
Age Group	# Cases	% Cases
0-19	31	4%
20-29	97	12%
30-39	115	14%
40-49	98	12%
50-59	158	19%
60-69	144	18%
70-79	85	10%
80+	92	11%
Total	820	100%
Hospitalized	221	27.0%
Deaths	61	7.4%
Age Group		
Age Group	Deaths	% of Deaths
0-19	0	0%
20-29	0	0%
30-39	1	2%
40-49	0	0%
50-59	4	7%
60-69	10	16%
70-79	10	16%
80+	36	59%
Total	61	100%

**PRELIMINARY COVID-19 Cases by Date of Illness Onset
West Central Ohio, 2/12/20 - 5/8/20***



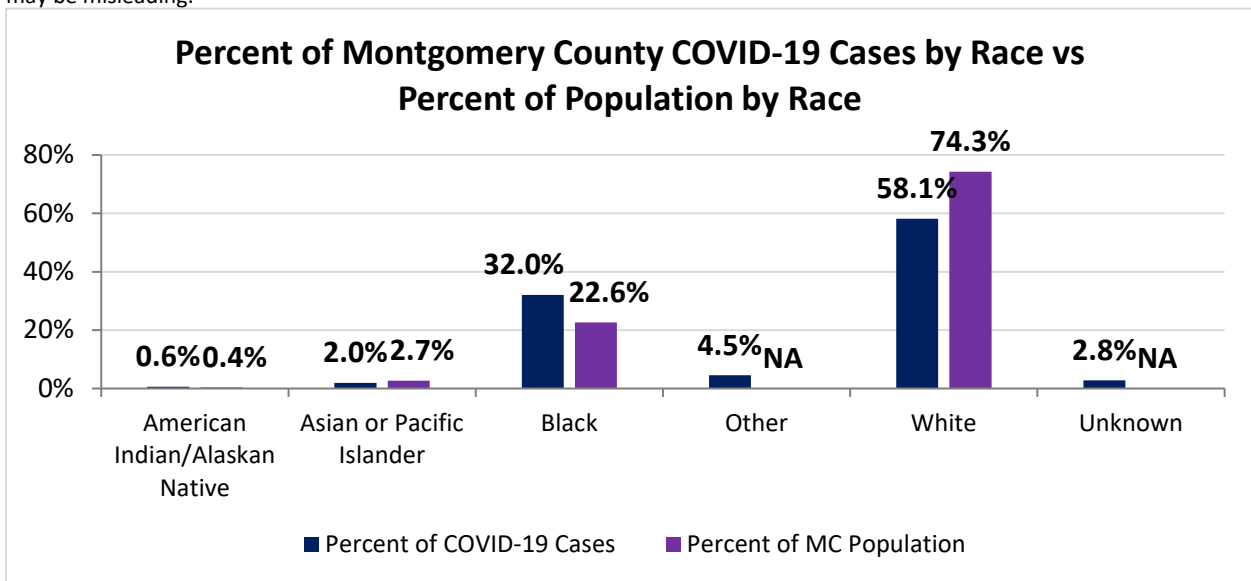
Montgomery County:

Preliminary COVID-19 Cases, Montgomery County, As of 5/8/2020		
Sex	# Cases	% Cases
Female	187	53%
Male	165	46%
Unknown	4	1%
Total	356	100%
Age Group		
Age Group	# Cases	% Cases
0-19	16	4%
20-29	42	12%
30-39	55	15%
40-49	46	13%
50-59	83	23%
60-69	68	19%
70-79	28	8%
80+	18	5%
Total	356	100%
Hospitalized		
Hospitalized	111	31.2%
Deaths		
Deaths	10	2.8%
Age Group		
Age Group	Deaths	% of Deaths
0-19	0	0%
20-29	0	0%
30-39	0	0%
40-49	0	0%
50-59	1	10%
60-69	3	30%
70-79	0	0%
80+	6	60%
Total	10	100%

Source: Ohio Disease Reporting System, ODH

Montgomery County COVID-19 Cases by Race As of 5/7/20			
Race	Count	Percent	Rate
American Indian/Alaskan Native (AI/AN)*	2	1%	93.1
Asian	7	2%	49.2
Black	114	32%	94.7
Other	16	4%	0.0
White	207	58%	52.3
Unknown	10	3%	0.0
Total	356	100%	66.9

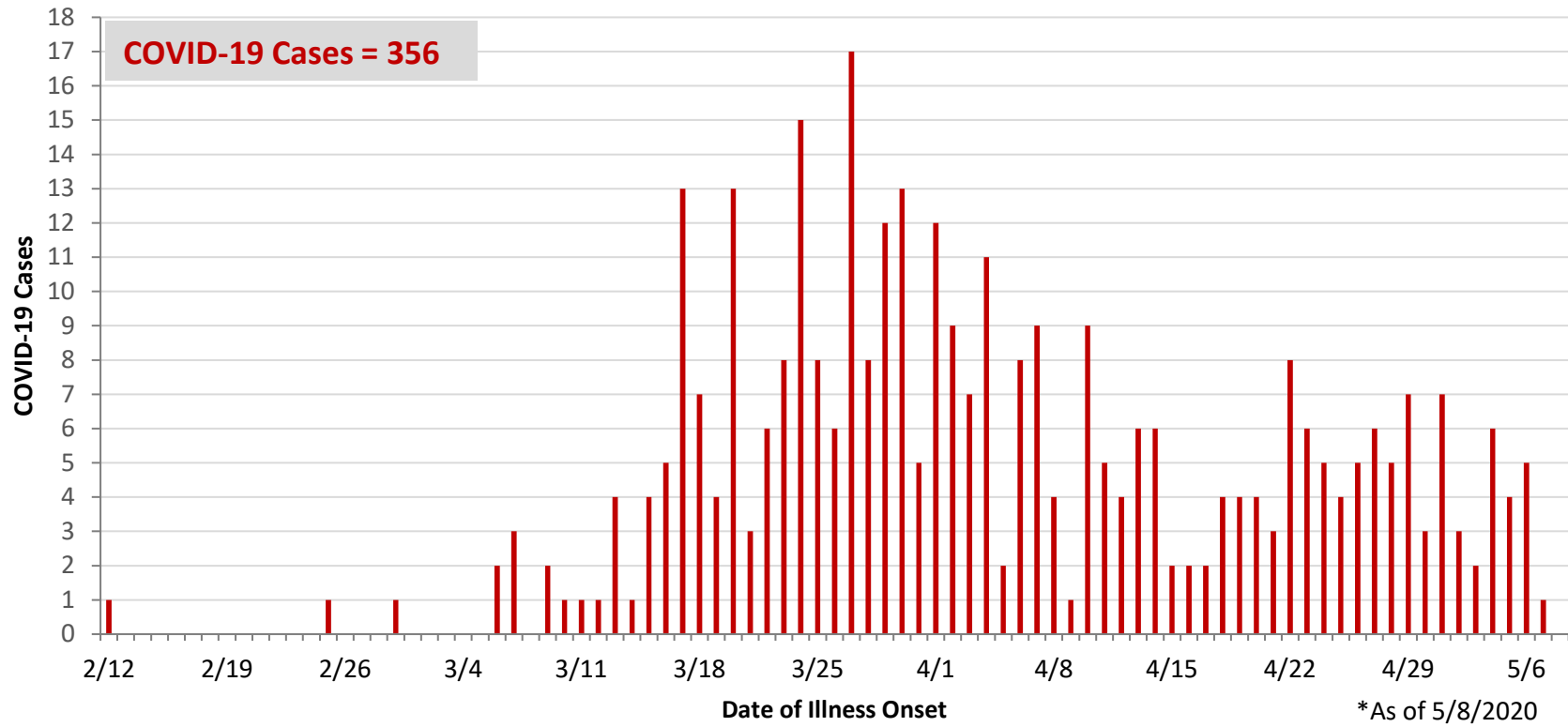
*Note. AI/ANs account for 0.4% of Montgomery County's population, and therefore, rates for this population will be large and may be misleading.



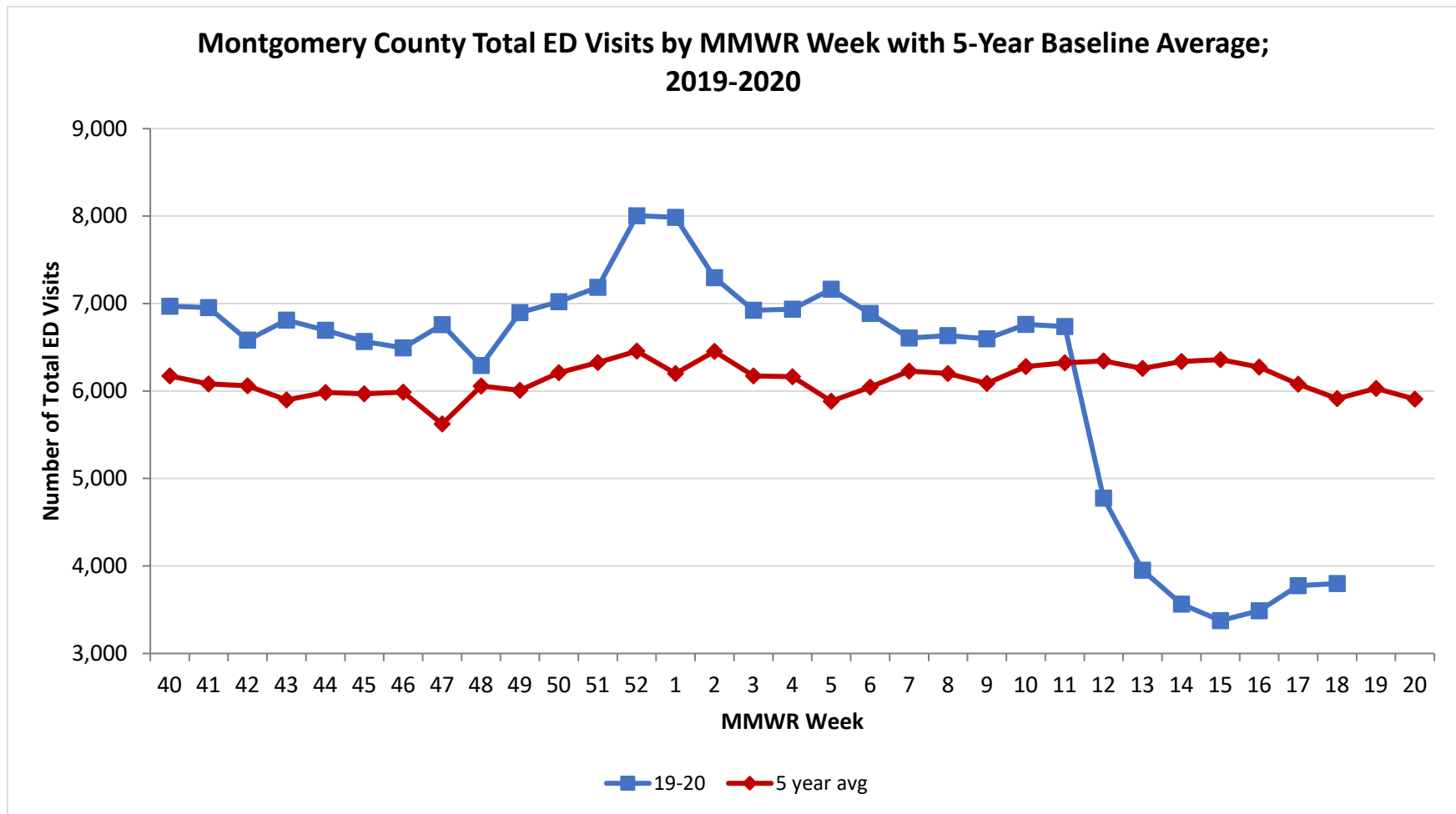
Montgomery County COVID-19 Cases by Health Care Worker Status As of 5/7/20		
Status	#	%
Health Care Worker	76	21%
Non-Health Care Worker	231	65%
Unknown	49	14%
Total	356	100%

Montgomery County COVID-19 Cases Age Range As of 5/7/20	
Stat	Age in Years
Age Range	1 - 95
Average Age	50.1
Median Age	53.0

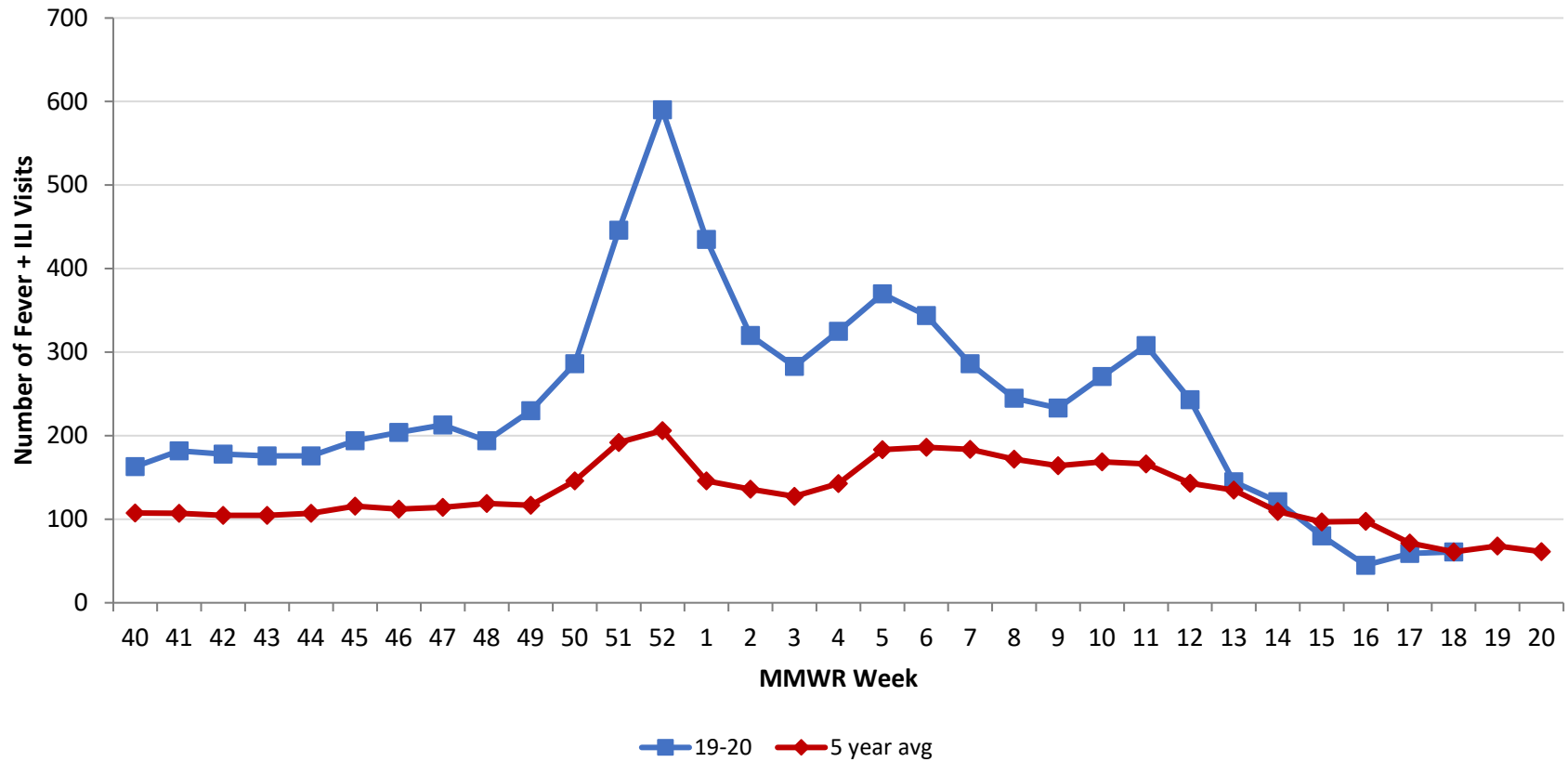
**PRELIMINARY COVID-19 Cases by Date of Illness Onset
Montgomery County, 2/12/20 - 5/8/20***



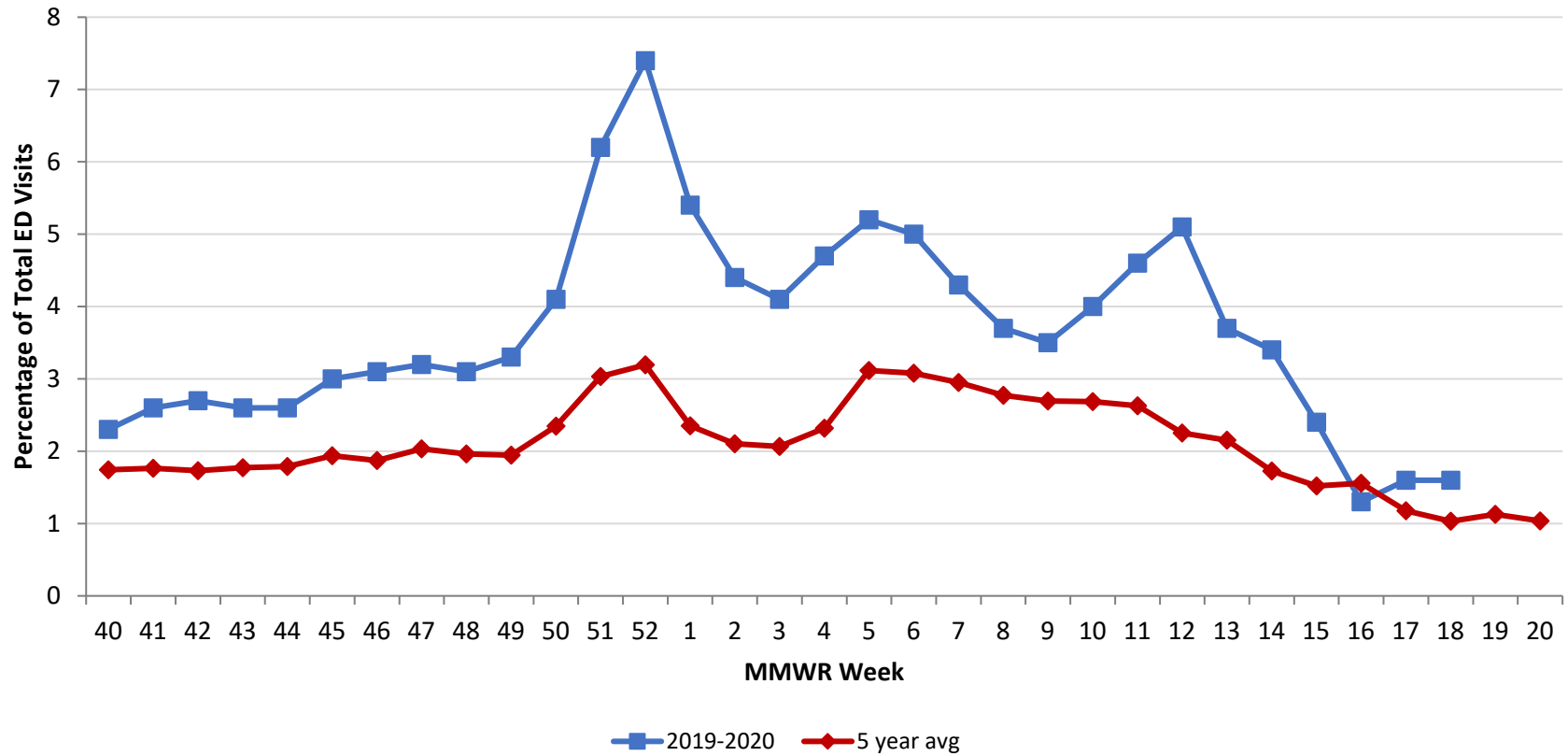
Source: EpiCenter Syndromic Surveillance, Health Monitoring Systems



Montgomery County Fever + ILI Specified ED Visits by MMWR Week with 5-Year Baseline Average; 2019-2020



Montgomery County Fever + ILI Specified ED Visits by MMWR Week with 5-Year Baseline Average; 2019-2020



# Total Visits		
MMWR Week	19-20	5-Year Average
40	6,970	6,173.4
41	6,955	6,082.8
42	6,581	6,061.6
43	6,810	5,899.6
44	6,694	5,982.4
45	6,567	5,968.0
46	6,494	5,987.6
47	6,760	5,622.8
48	6,292	6,056.8
49	6,895	6,008.0
50	7,022	6,209.8
51	7,185	6,324.4
52	8,005	6,456.0
1	7,986	6,200.8
2	7,297	6,452.4
3	6,924	6,172.9
4	6,935	6,164.0
5	7,164	5,881.8
6	6,888	6,045.0
7	6,605	6,226.8
8	6,633	6,200.6
9	6,597	6,088.2
10	6,763	6,279.6
11	6,738	6,321.6
12	4,775	6,345.0
13	3,592	6,259.8
14	3,565	6,337.4
15	3,376	6,359.8
16	3,489	6,274.0
17	3,774	6,079.8
18	3,798	5,913.4
19	-	6,029.6
20	-	5,908.8

# Fever + ILI Visits		
MMWR Week	19-20	5-Year Average
40	163	107.6
41	182	107.2
42	178	104.8
43	176	104.6
44	176	107.0
45	194	115.6
46	204	112.0
47	213	114.4
48	194	118.8
49	230	116.8
50	286	145.8
51	446	191.8
52	590	206.2
1	435	145.8
2	320	135.8
3	283	127.4
4	325	142.8
5	370	183.2
6	344	186.2
7	286	183.8
8	245	171.8
9	233	164.0
10	271	168.6
11	308	166.2
12	243	143.0
13	145	134.8
14	121	109.4
15	80	96.8
16	45	97.6
17	59	71.6
18	61	61.0
19	-	68.0
20	-	61.2

% Fever + ILI Visits		
MMWR Week	19-20	5-Year Average
40	2.3	1.7
41	2.6	1.8
42	2.7	1.7
43	2.6	1.8
44	2.6	1.8
45	3.0	1.9
46	3.1	1.9
47	3.2	2.0
48	3.1	2.0
49	3.3	1.9
50	4.1	2.3
51	6.2	3.0
52	7.4	3.2
1	5.4	2.4
2	4.4	2.1
3	4.1	2.1
4	4.7	2.3
5	5.2	3.1
6	5	3.1
7	4.3	3.0
8	3.7	2.8
9	3.5	2.7
10	4	2.7
11	4.6	2.6
12	5.1	2.3
13	3.7	2.2
14	3.4	1.7
15	2.4	1.5
16	1.3	1.6
17	1.6	1.2
18	1.6	1.0
19	-	1.1
20	-	1.0