



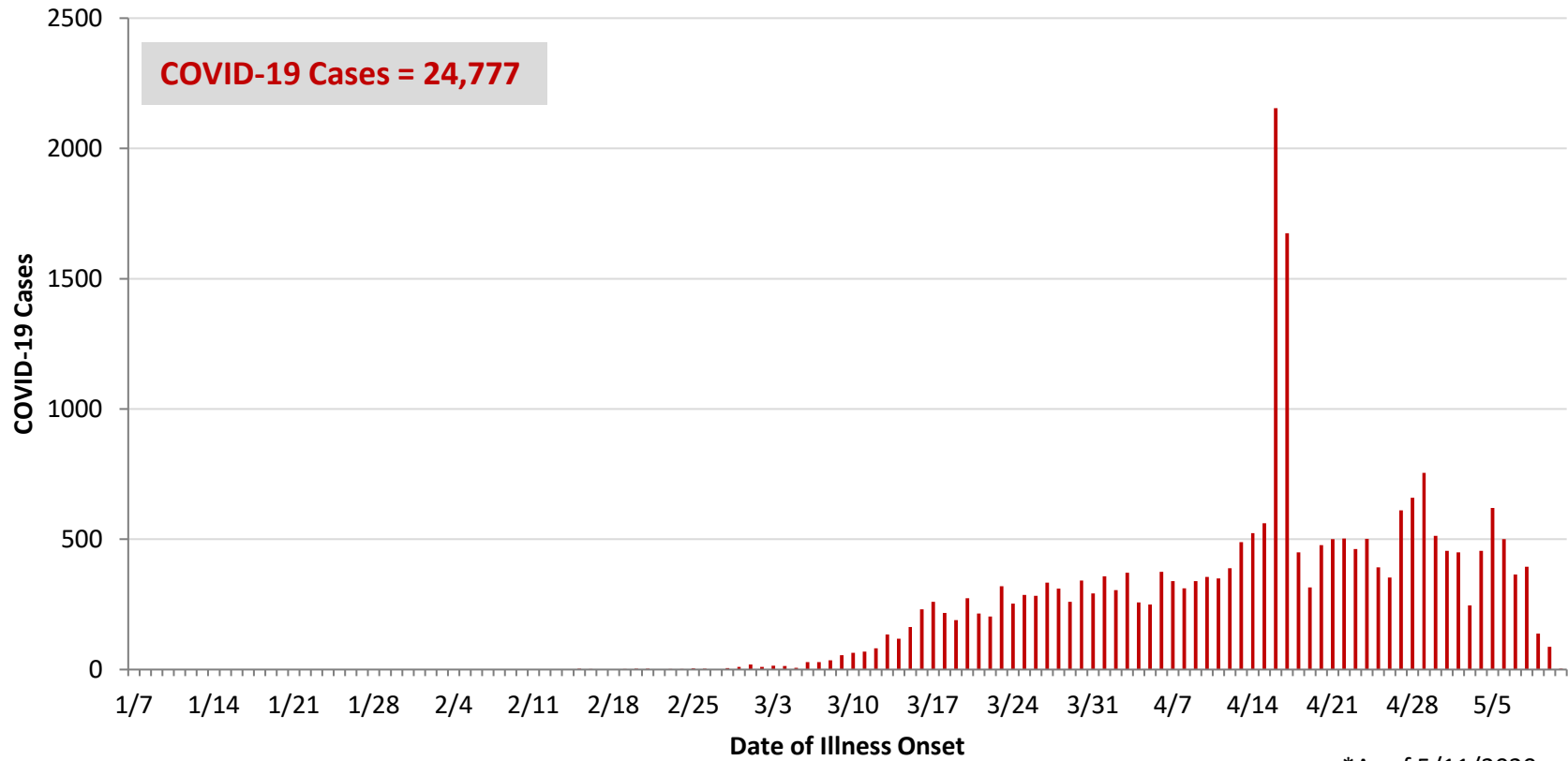
**Ohio, West Central Ohio (WCO), and Montgomery County COVID-19 Cases  
As of 5/11/20**

**Source:** The State of Ohio COVID-19 Dashboard, Ohio Department of Health

**Ohio:**

<b>Preliminary COVID-19 Cases Ohio, As of 5/11/2020</b>		
<b>Sex</b>	<b># Cases</b>	<b>% Cases</b>
Female	11,211	45%
Male	13,407	54%
Unknown	159	1%
<b>Total</b>	<b>24,777</b>	<b>100%</b>
<b>Age Group</b>		
<b>Age Group</b>	<b># Cases</b>	<b>% Cases</b>
0-19	794	3%
20-29	3,176	13%
30-39	3,978	16%
40-49	3,981	16%
50-59	4,233	17%
60-69	3,533	14%
70-79	2,306	9%
80+	2,758	11%
Unknown	18	0%
<b>Total</b>	<b>24,777</b>	<b>100%</b>
Hospitalized	4,413	17.8%
Deaths	1,357	5.5%
<b>Age Group</b>	<b>Deaths</b>	<b>% of Deaths</b>
0-19	0	0%
20-29	2	0%
30-39	8	1%
40-49	21	2%
50-59	77	6%
60-69	195	14%
70-79	356	26%
80+	698	51%
<b>Total</b>	<b>1,357</b>	<b>100%</b>

**PRELIMINARY COVID-19 Cases by Date of Illness Onset  
Ohio, 2/12/20 - 5/11/20\***

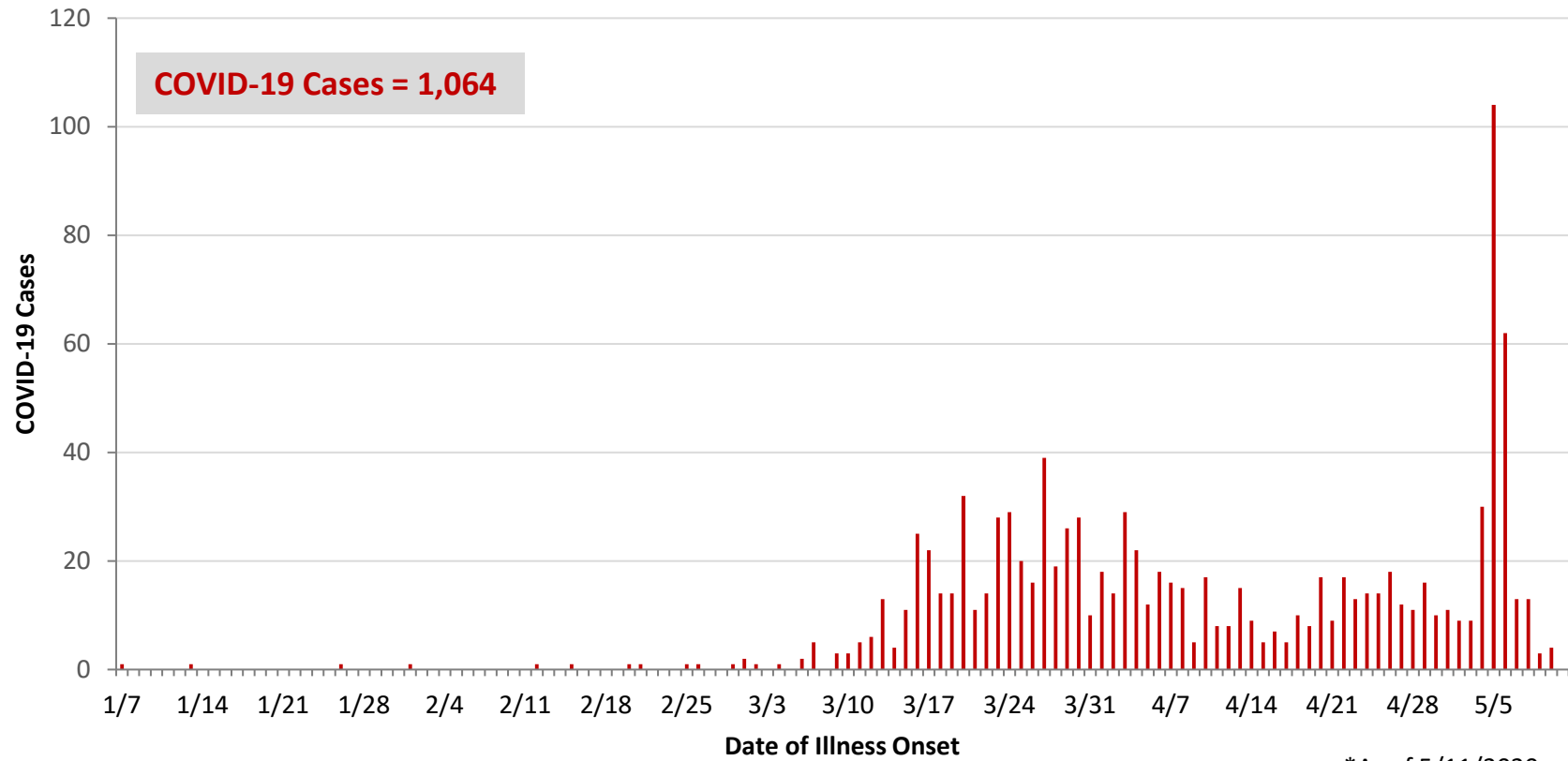


\*As of 5/11/2020

WCO:

Preliminary COVID-19 Cases West Central Ohio, As of 5/11/2020		
County	# Cases	% Cases
Champaign	19	2%
Clark	98	9%
Darke	89	8%
Greene	63	6%
Miami	313	29%
Montgomery	422	40%
Preble	28	3%
Shelby	32	3%
<b>Total</b>	<b>1,064</b>	<b>100%</b>
Sex		
Sex	# Cases	% Cases
Female	574	54%
Male	427	40%
Unknown	63	6%
<b>Total</b>	<b>1,064</b>	<b>100%</b>
Age Group		
Age Group	# Cases	% Cases
0-19	44	4%
20-29	117	11%
30-39	144	14%
40-49	124	12%
50-59	199	19%
60-69	179	17%
70-79	115	11%
80+	142	13%
<b>Total</b>	<b>1,064</b>	<b>100%</b>
Hospitalized	244	22.9%
Deaths	63	5.9%
Age Group		
Age Group	Deaths	% of Deaths
0-19	0	0%
20-29	0	0%
30-39	1	2%
40-49	0	0%
50-59	4	6%
60-69	10	16%
70-79	11	17%
80+	37	59%
<b>Total</b>	<b>63</b>	<b>100%</b>

**PRELIMINARY COVID-19 Cases by Date of Illness Onset  
West Central Ohio, 1/7/20 - 5/11/20\***



\*As of 5/11/2020

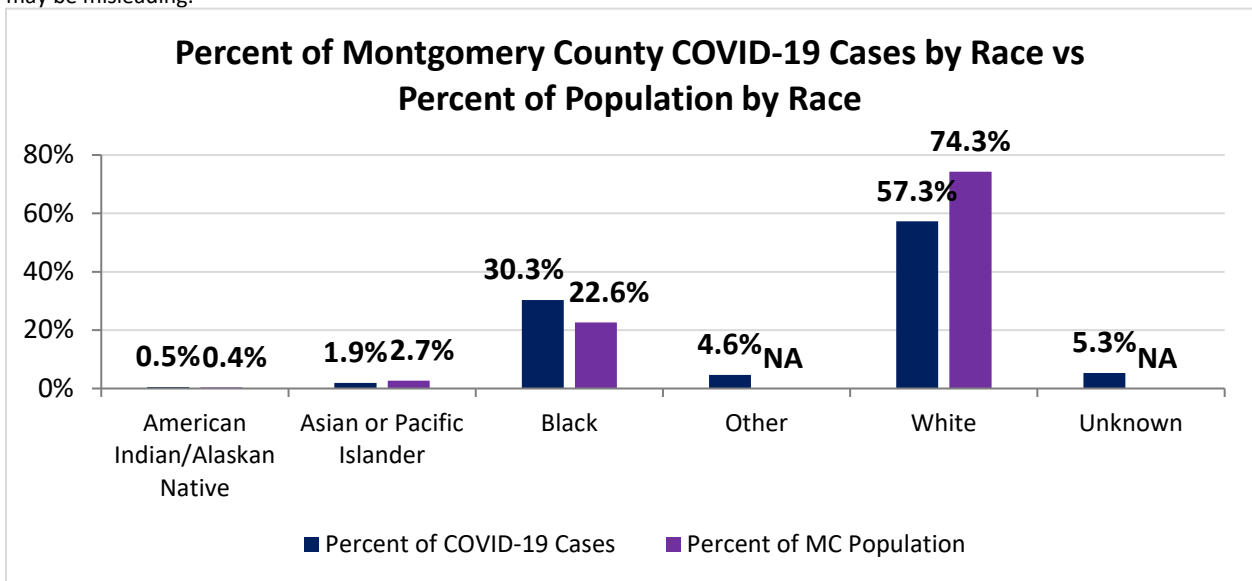
**Montgomery County:**

<b>Preliminary COVID-19 Cases, Montgomery County, As of 5/11/2020</b>		
<b>Sex</b>	<b># Cases</b>	<b>% Cases</b>
Female	218	52%
Male	198	47%
Unknown	6	1%
<b>Total</b>	<b>422</b>	<b>100%</b>
<b>Age Group</b>		
<b>Age Group</b>	<b># Cases</b>	<b>% Cases</b>
0-19	21	5%
20-29	48	11%
30-39	61	14%
40-49	57	14%
50-59	99	23%
60-69	81	19%
70-79	36	9%
80+	19	5%
<b>Total</b>	<b>422</b>	<b>100%</b>
<b>Hospitalized</b>		
Hospitalized	126	29.9%
<b>Deaths</b>		
Deaths	10	2.4%
<b>Age Group</b>		
<b>Age Group</b>	<b>Deaths</b>	<b>% of Deaths</b>
0-19	0	0%
20-29	0	0%
30-39	0	0%
40-49	0	0%
50-59	1	10%
60-69	3	30%
70-79	0	0%
80+	6	60%
<b>Total</b>	<b>10</b>	<b>100%</b>

Source: Ohio Disease Reporting System, ODH

Montgomery County COVID-19 Cases by Race As of 5/11/20			
Race	Count	Percent	Rate
American Indian/Alaskan Native (AI/AN)*	2	0%	93.1
Asian	8	2%	56.2
Black	125	30%	103.9
Other	19	5%	0.0
White	236	57%	59.7
Unknown	22	5%	0.0
<b>Total</b>	<b>412</b>	<b>100%</b>	<b>77.4</b>

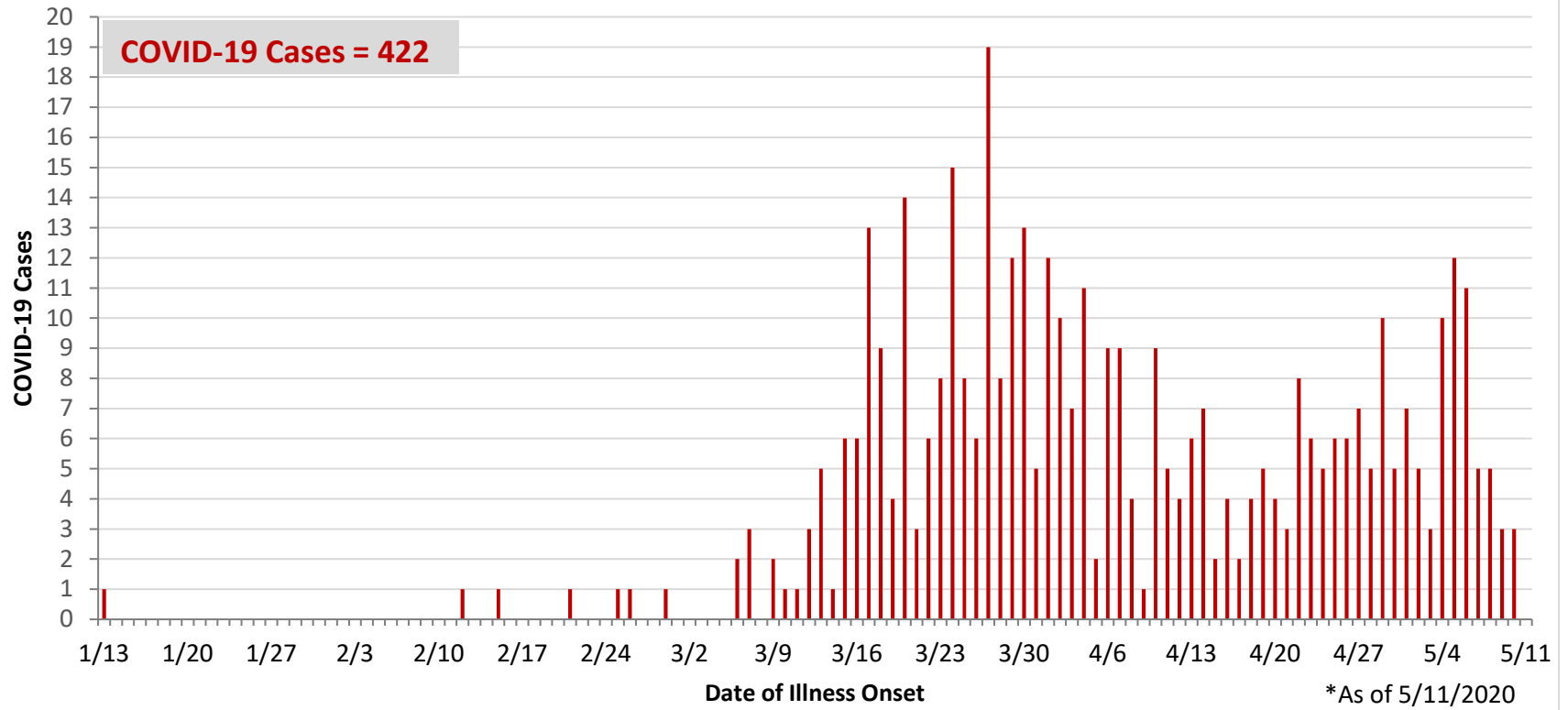
\*Note. AI/ANs account for 0.4% of Montgomery County's population, and therefore, rates for this population will be large and may be misleading.



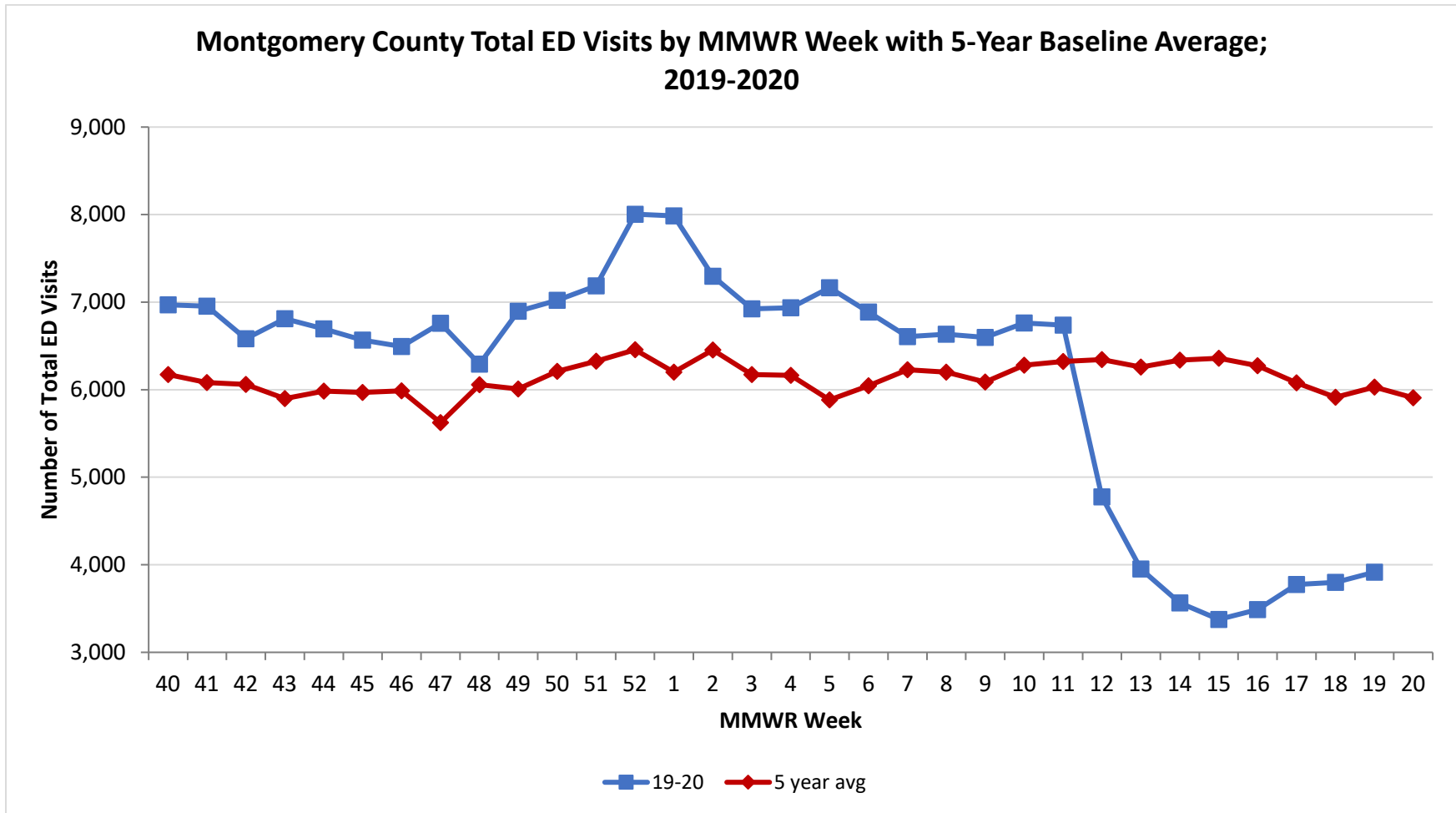
Montgomery County COVID-19 Cases by Health Care Worker Status As of 5/11/20		
Status	#	%
Health Care Worker	86	21%
Non-Health Care Worker	263	64%
Unknown	63	15%
<b>Total</b>	<b>412</b>	<b>100%</b>

Montgomery County COVID-19 Cases Age Range As of 5/11/20	
Stat	Age in Years
Age Range	1 - 95
Average Age	49.5
Median Age	52.0

**PRELIMINARY COVID-19 Cases by Date of Illness Onset  
Montgomery County, 1/13/20 - 5/11/20\***

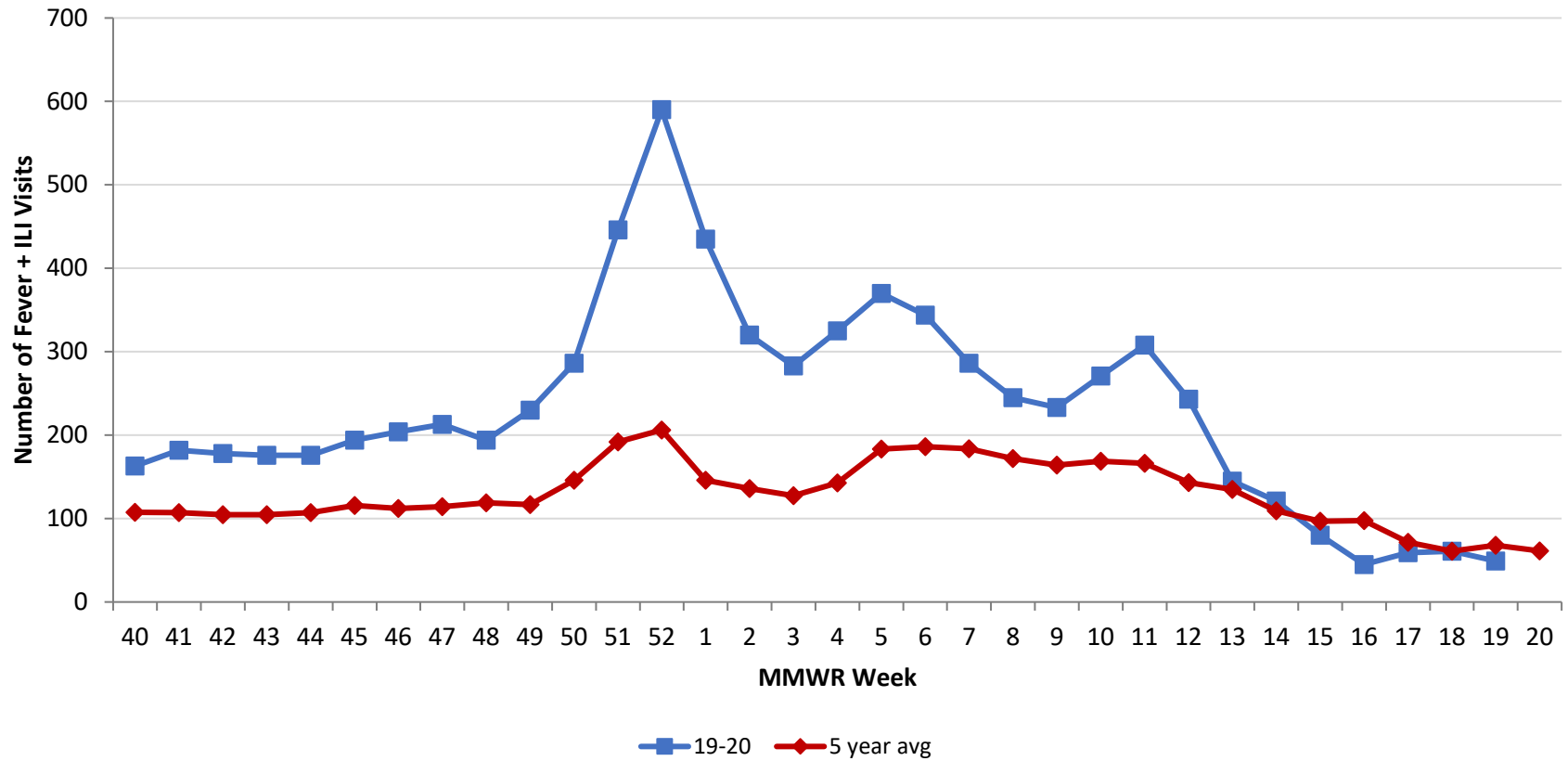


Source: EpiCenter Syndromic Surveillance, Health Monitoring Systems

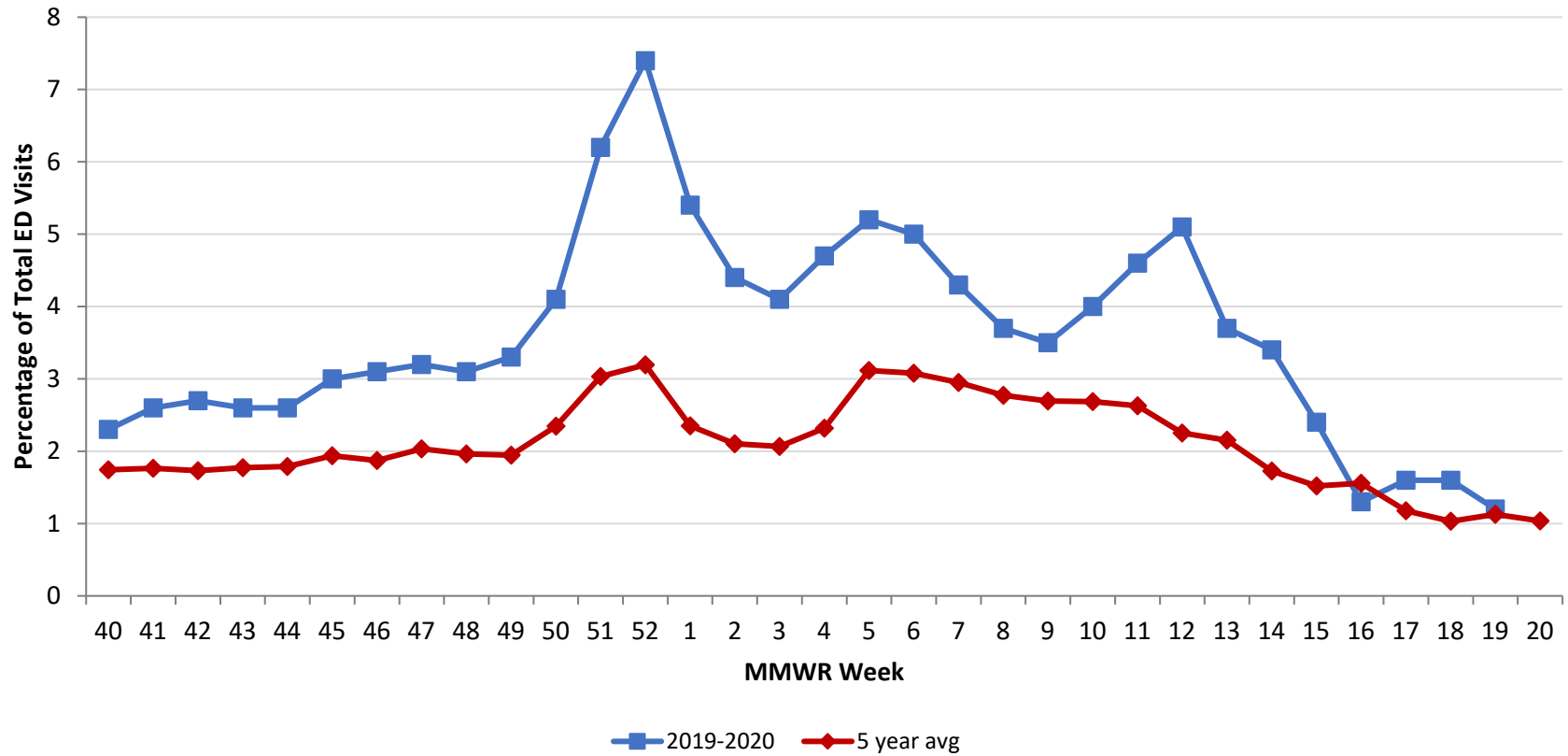




**Montgomery County Fever + ILI Specified ED Visits by MMWR Week with 5-Year Baseline Average; 2019-2020**



Montgomery County Fever + ILI Specified ED Visits by MMWR Week with 5-Year Baseline Average; 2019-2020



# Total Visits		
MMWR Week	19-20	5-Year Average
40	6,970	6,173.4
41	6,955	6,082.8
42	6,581	6,061.6
43	6,810	5,899.6
44	6,694	5,982.4
45	6,567	5,968.0
46	6,494	5,987.6
47	6,760	5,622.8
48	6,292	6,056.8
49	6,895	6,008.0
50	7,022	6,209.8
51	7,185	6,324.4
52	8,005	6,456.0
1	7,986	6,200.8
2	7,297	6,452.4
3	6,924	6,172.9
4	6,935	6,164.0
5	7,164	5,881.8
6	6,888	6,045.0
7	6,605	6,226.8
8	6,633	6,200.6
9	6,597	6,088.2
10	6,763	6,279.6
11	6,738	6,321.6
12	4,775	6,345.0
13	3,592	6,259.8
14	3,565	6,337.4
15	3,376	6,359.8
16	3,489	6,274.0
17	3,774	6,079.8
18	3,798	5,913.4
19	3,915	6,029.6
20	-	5,908.8

# Fever + ILI Visits		
MMWR Week	19-20	5-Year Average
40	163	107.6
41	182	107.2
42	178	104.8
43	176	104.6
44	176	107.0
45	194	115.6
46	204	112.0
47	213	114.4
48	194	118.8
49	230	116.8
50	286	145.8
51	446	191.8
52	590	206.2
1	435	145.8
2	320	135.8
3	283	127.4
4	325	142.8
5	370	183.2
6	344	186.2
7	286	183.8
8	245	171.8
9	233	164.0
10	271	168.6
11	308	166.2
12	243	143.0
13	145	134.8
14	121	109.4
15	80	96.8
16	45	97.6
17	59	71.6
18	61	61.0
19	49	68.0
20	-	61.2

% Fever + ILI Visits		
MMWR Week	19-20	5-Year Average
40	2.3	1.7
41	2.6	1.8
42	2.7	1.7
43	2.6	1.8
44	2.6	1.8
45	3.0	1.9
46	3.1	1.9
47	3.2	2.0
48	3.1	2.0
49	3.3	1.9
50	4.1	2.3
51	6.2	3.0
52	7.4	3.2
1	5.4	2.4
2	4.4	2.1
3	4.1	2.1
4	4.7	2.3
5	5.2	3.1
6	5	3.1
7	4.3	3.0
8	3.7	2.8
9	3.5	2.7
10	4	2.7
11	4.6	2.6
12	5.1	2.3
13	3.7	2.2
14	3.4	1.7
15	2.4	1.5
16	1.3	1.6
17	1.6	1.2
18	1.6	1.0
19	1.2	1.1
20	-	1.0