



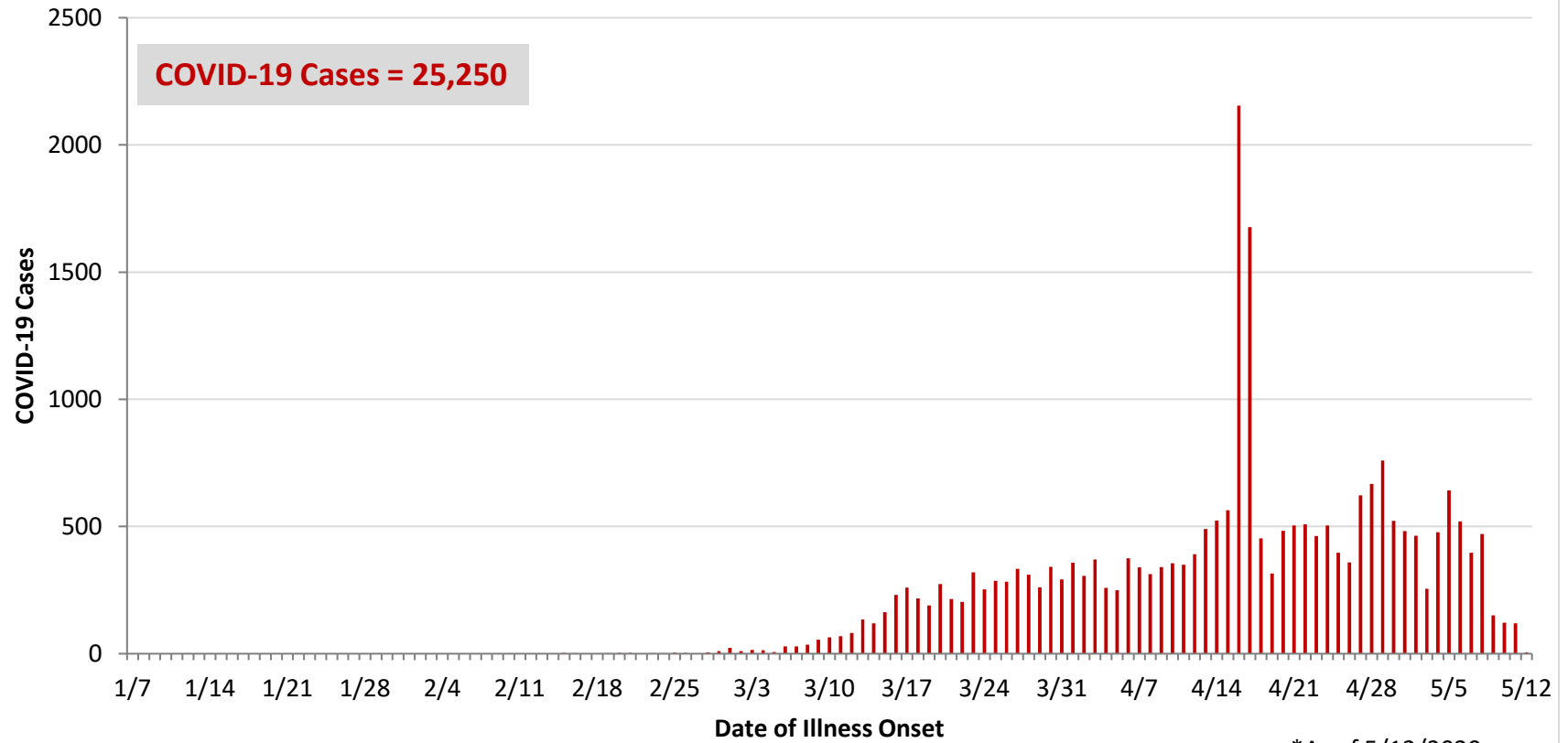
**Ohio, West Central Ohio (WCO), and Montgomery County COVID-19 Cases  
As of 5/12/20**

**Source:** The State of Ohio COVID-19 Dashboard, Ohio Department of Health

**Ohio:**

<b>Preliminary COVID-19 Cases Ohio, As of 5/12/2020</b>		
<b>Sex</b>	<b># Cases</b>	<b>% Cases</b>
Female	11,453	45%
Male	13,635	54%
Unknown	162	1%
<b>Total</b>	<b>25,250</b>	<b>100%</b>
<b>Age Group</b>		
<b>Age Group</b>	<b># Cases</b>	<b>% Cases</b>
0-19	819	3%
20-29	3,246	13%
30-39	4,062	16%
40-49	4,050	16%
50-59	4,307	17%
60-69	3,593	14%
70-79	2,336	9%
80+	2,815	11%
Unknown	22	0%
<b>Total</b>	<b>25,250</b>	<b>100%</b>
<b>Hospitalized</b>		
Hospitalized	4,539	18.0%
<b>Deaths</b>		
Deaths	1,436	5.7%
<b>Age Group</b>		
<b>Age Group</b>	<b>Deaths</b>	<b>% of Deaths</b>
0-19	0	0%
20-29	3	0%
30-39	8	1%
40-49	22	2%
50-59	79	6%
60-69	208	14%
70-79	376	26%
80+	740	52%
<b>Total</b>	<b>1,436</b>	<b>100%</b>

**PRELIMINARY COVID-19 Cases by Date of Illness Onset  
Ohio, 2/12/20 - 5/12/20\***

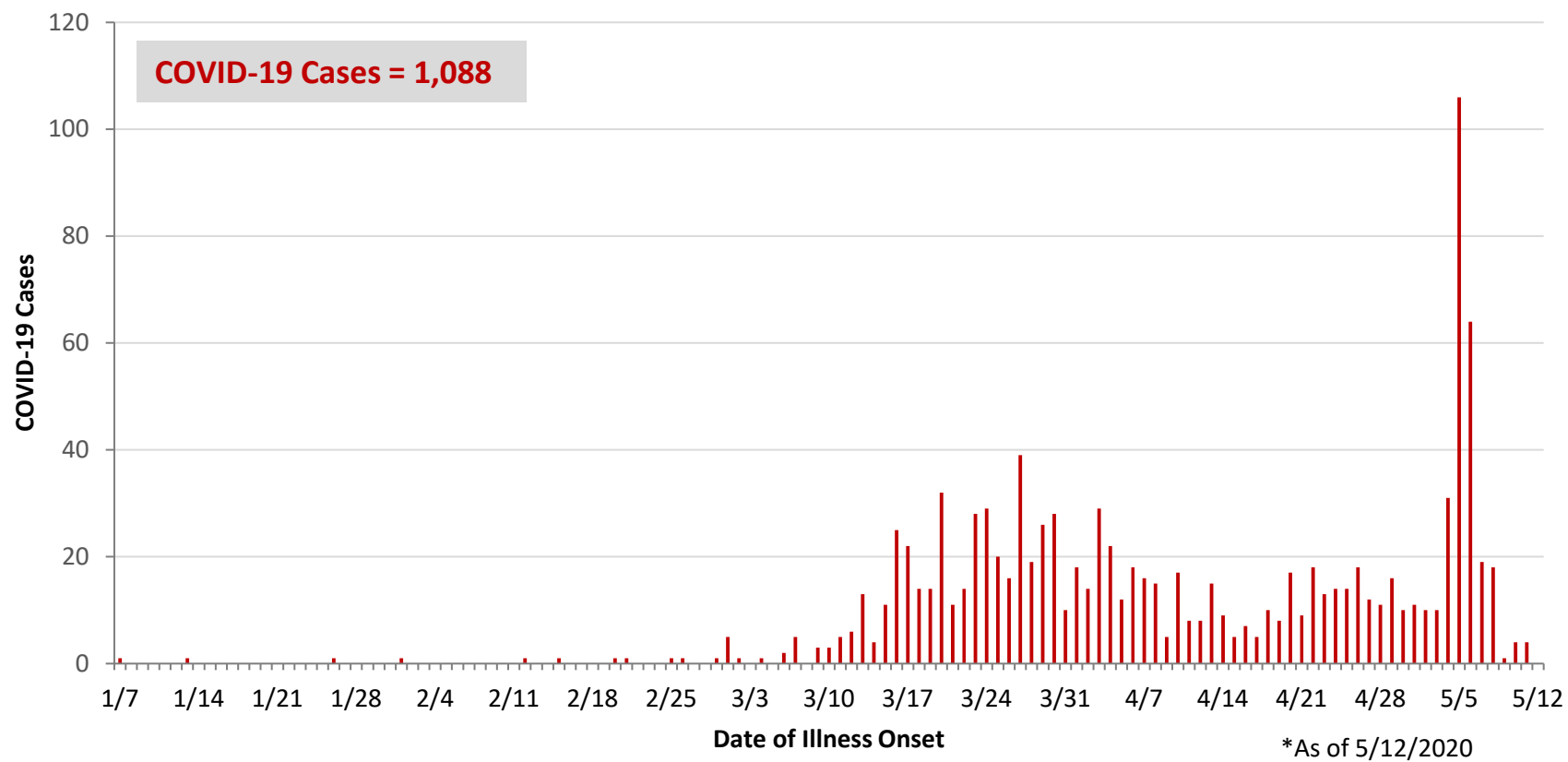


\*As of 5/12/2020

WCO:

Preliminary COVID-19 Cases West Central Ohio, As of 5/12/2020		
County	# Cases	% Cases
Champaign	19	2%
Clark	104	10%
Darke	90	8%
Greene	67	6%
Miami	314	29%
Montgomery	433	40%
Preble	28	3%
Shelby	33	3%
<b>Total</b>	<b>1,088</b>	<b>100%</b>
Sex		
Sex	# Cases	% Cases
Female	589	54%
Male	436	40%
Unknown	63	6%
<b>Total</b>	<b>1,088</b>	<b>100%</b>
Age Group		
Age Group	# Cases	% Cases
0-19	44	4%
20-29	123	11%
30-39	148	14%
40-49	133	12%
50-59	202	19%
60-69	182	17%
70-79	115	11%
80+	141	13%
<b>Total</b>	<b>1,088</b>	<b>100%</b>
Hospitalized	249	22.9%
Deaths	64	5.9%
Age Group		
Age Group	Deaths	% of Deaths
0-19	0	0%
20-29	0	0%
30-39	1	2%
40-49	0	0%
50-59	4	6%
60-69	10	16%
70-79	11	17%
80+	38	59%
<b>Total</b>	<b>64</b>	<b>100%</b>

**PRELIMINARY COVID-19 Cases by Date of Illness Onset  
West Central Ohio, 1/7/20 - 5/12/20\***



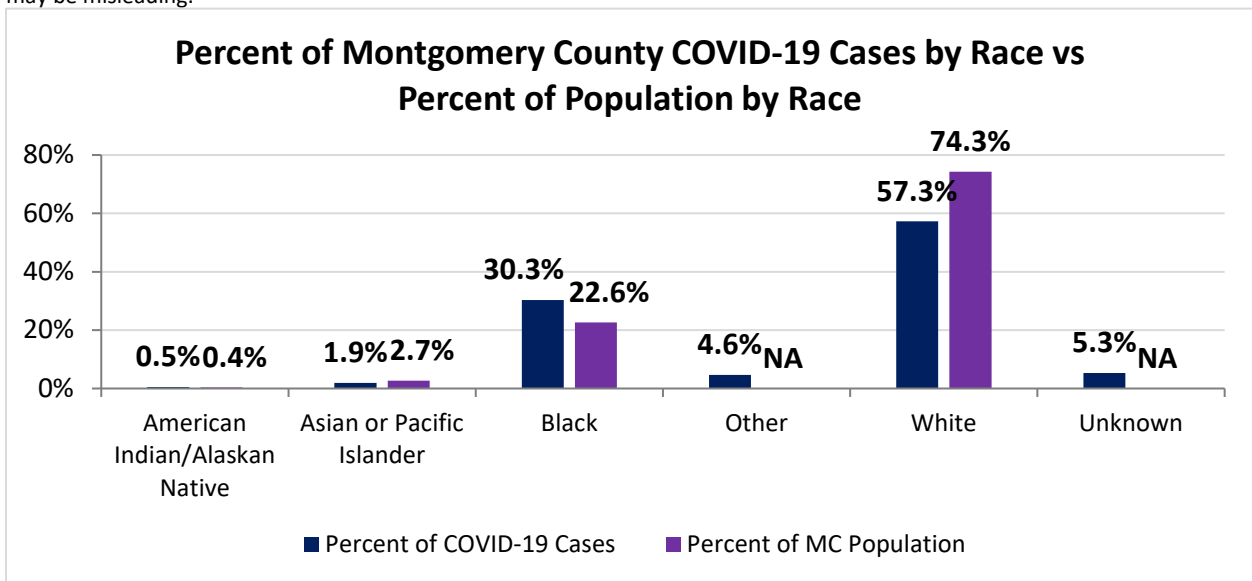
**Montgomery County:**

<b>Preliminary COVID-19 Cases, Montgomery County, As of 5/12/2020</b>		
<b>Sex</b>	<b># Cases</b>	<b>% Cases</b>
Female	226	52%
Male	201	46%
Unknown	6	1%
<b>Total</b>	<b>433</b>	<b>100%</b>
<b>Age Group</b>		
<b>Age Group</b>	<b># Cases</b>	<b>% Cases</b>
0-19	21	5%
20-29	50	12%
30-39	62	14%
40-49	63	15%
50-59	98	23%
60-69	84	19%
70-79	36	8%
80+	19	4%
<b>Total</b>	<b>433</b>	<b>100%</b>
<b>Hospitalized</b>		
Hospitalized	129	29.8%
<b>Deaths</b>		
Deaths	10	2.3%
<b>Age Group</b>		
<b>Age Group</b>	<b>Deaths</b>	<b>% of Deaths</b>
0-19	0	0%
20-29	0	0%
30-39	0	0%
40-49	0	0%
50-59	1	10%
60-69	3	30%
70-79	0	0%
80+	6	60%
<b>Total</b>	<b>10</b>	<b>100%</b>

Source: Ohio Disease Reporting System, ODH

<b>Montgomery County COVID-19 Cases by Race As of 5/11/20</b>			
<b>Race</b>	<b>Count</b>	<b>Percent</b>	<b>Rate</b>
American Indian/Alaskan Native (AI/AN)*	2	0%	93.1
Asian	8	2%	56.2
Black	125	30%	103.9
Other	19	5%	0.0
White	236	57%	59.7
Unknown	22	5%	0.0
<b>Total</b>	<b>412</b>	<b>100%</b>	<b>77.4</b>

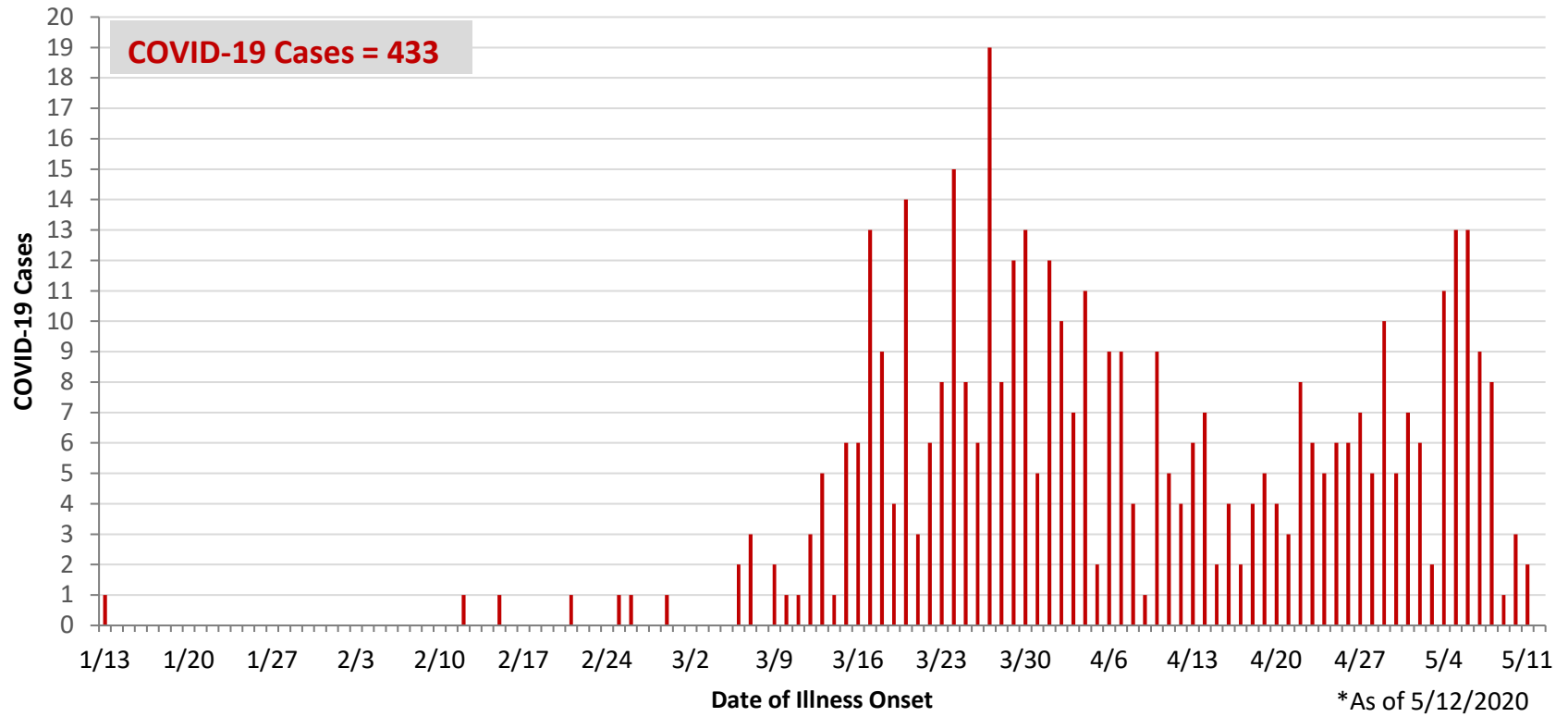
\*Note. AI/ANs account for 0.4% of Montgomery County's population, and therefore, rates for this population will be large and may be misleading.



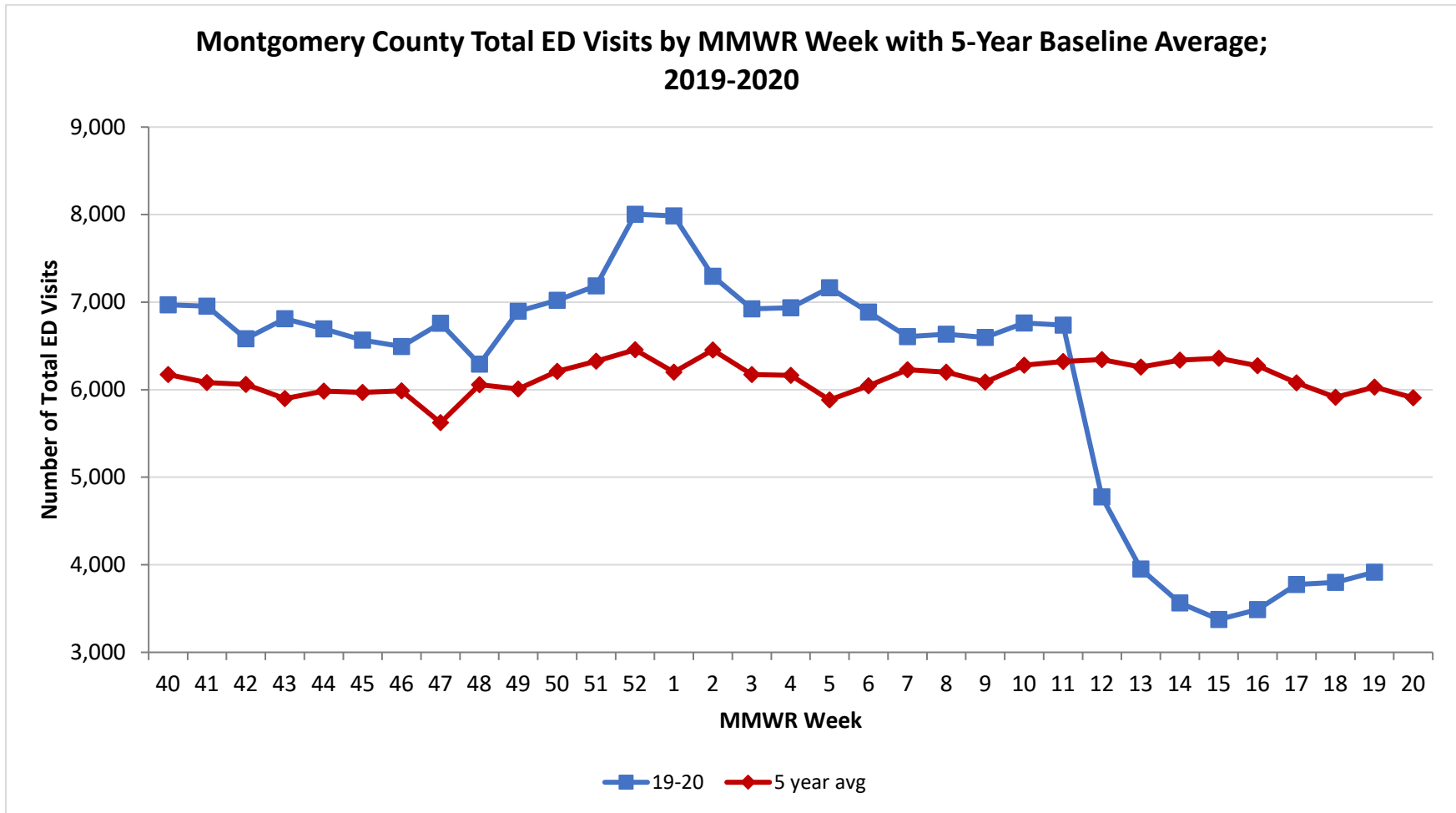
<b>Montgomery County COVID-19 Cases by Health Care Worker Status As of 5/11/20</b>		
<b>Status</b>	<b>#</b>	<b>%</b>
Health Care Worker	86	21%
Non-Health Care Worker	263	64%
Unknown	63	15%
<b>Total</b>	<b>412</b>	<b>100%</b>

<b>Montgomery County COVID-19 Cases Age Range As of 5/11/20</b>	
<b>Stat</b>	<b>Age in Years</b>
Age Range	1 - 95
Average Age	49.5
Median Age	52.0

**PRELIMINARY COVID-19 Cases by Date of Illness Onset  
Montgomery County, 1/13/20 - 5/12/20\***

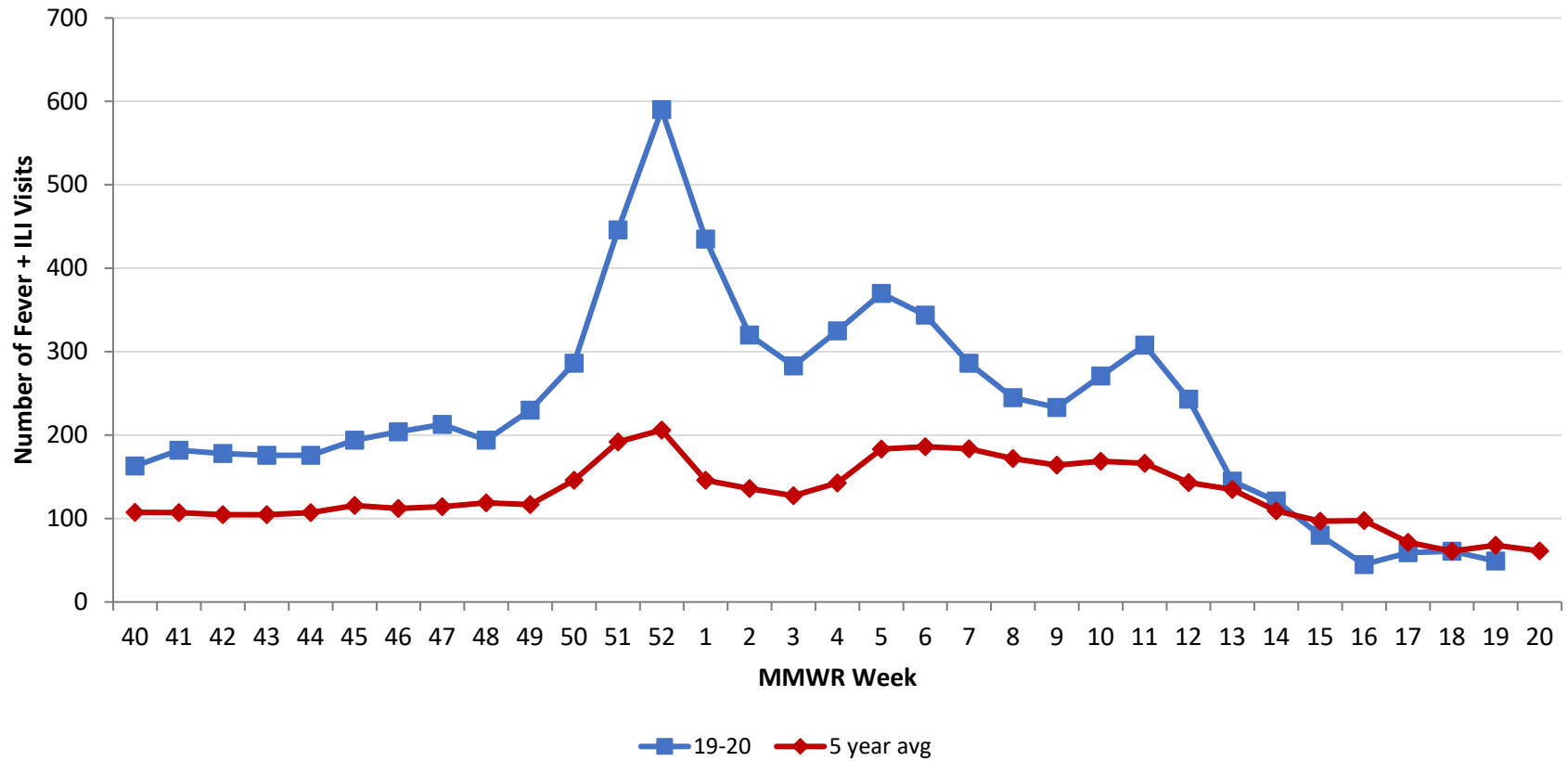


Source: EpiCenter Syndromic Surveillance, Health Monitoring Systems

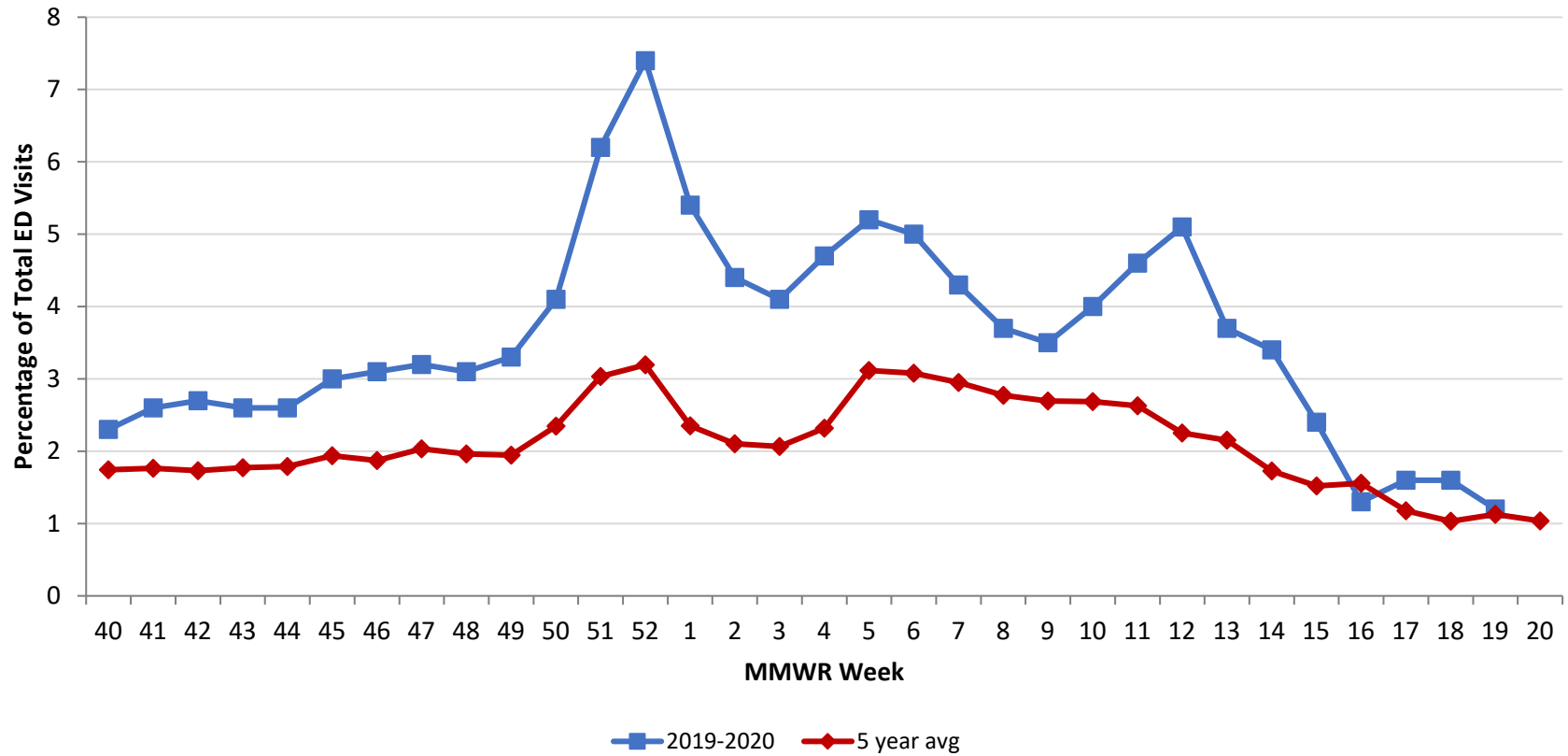




Montgomery County Fever + ILI Specified ED Visits by MMWR Week with 5-Year Baseline Average; 2019-2020



Montgomery County Fever + ILI Specified ED Visits by MMWR Week with 5-Year Baseline Average; 2019-2020



# Total Visits		
MMWR Week	19-20	5-Year Average
40	6,970	6,173.4
41	6,955	6,082.8
42	6,581	6,061.6
43	6,810	5,899.6
44	6,694	5,982.4
45	6,567	5,968.0
46	6,494	5,987.6
47	6,760	5,622.8
48	6,292	6,056.8
49	6,895	6,008.0
50	7,022	6,209.8
51	7,185	6,324.4
52	8,005	6,456.0
1	7,986	6,200.8
2	7,297	6,452.4
3	6,924	6,172.9
4	6,935	6,164.0
5	7,164	5,881.8
6	6,888	6,045.0
7	6,605	6,226.8
8	6,633	6,200.6
9	6,597	6,088.2
10	6,763	6,279.6
11	6,738	6,321.6
12	4,775	6,345.0
13	3,592	6,259.8
14	3,565	6,337.4
15	3,376	6,359.8
16	3,489	6,274.0
17	3,774	6,079.8
18	3,798	5,913.4
19	3,915	6,029.6
20	-	5,908.8

# Fever + ILI Visits		
MMWR Week	19-20	5-Year Average
40	163	107.6
41	182	107.2
42	178	104.8
43	176	104.6
44	176	107.0
45	194	115.6
46	204	112.0
47	213	114.4
48	194	118.8
49	230	116.8
50	286	145.8
51	446	191.8
52	590	206.2
1	435	145.8
2	320	135.8
3	283	127.4
4	325	142.8
5	370	183.2
6	344	186.2
7	286	183.8
8	245	171.8
9	233	164.0
10	271	168.6
11	308	166.2
12	243	143.0
13	145	134.8
14	121	109.4
15	80	96.8
16	45	97.6
17	59	71.6
18	61	61.0
19	49	68.0
20	-	61.2

% Fever + ILI Visits		
MMWR Week	19-20	5-Year Average
40	2.3	1.7
41	2.6	1.8
42	2.7	1.7
43	2.6	1.8
44	2.6	1.8
45	3.0	1.9
46	3.1	1.9
47	3.2	2.0
48	3.1	2.0
49	3.3	1.9
50	4.1	2.3
51	6.2	3.0
52	7.4	3.2
1	5.4	2.4
2	4.4	2.1
3	4.1	2.1
4	4.7	2.3
5	5.2	3.1
6	5	3.1
7	4.3	3.0
8	3.7	2.8
9	3.5	2.7
10	4	2.7
11	4.6	2.6
12	5.1	2.3
13	3.7	2.2
14	3.4	1.7
15	2.4	1.5
16	1.3	1.6
17	1.6	1.2
18	1.6	1.0
19	1.2	1.1
20	-	1.0