



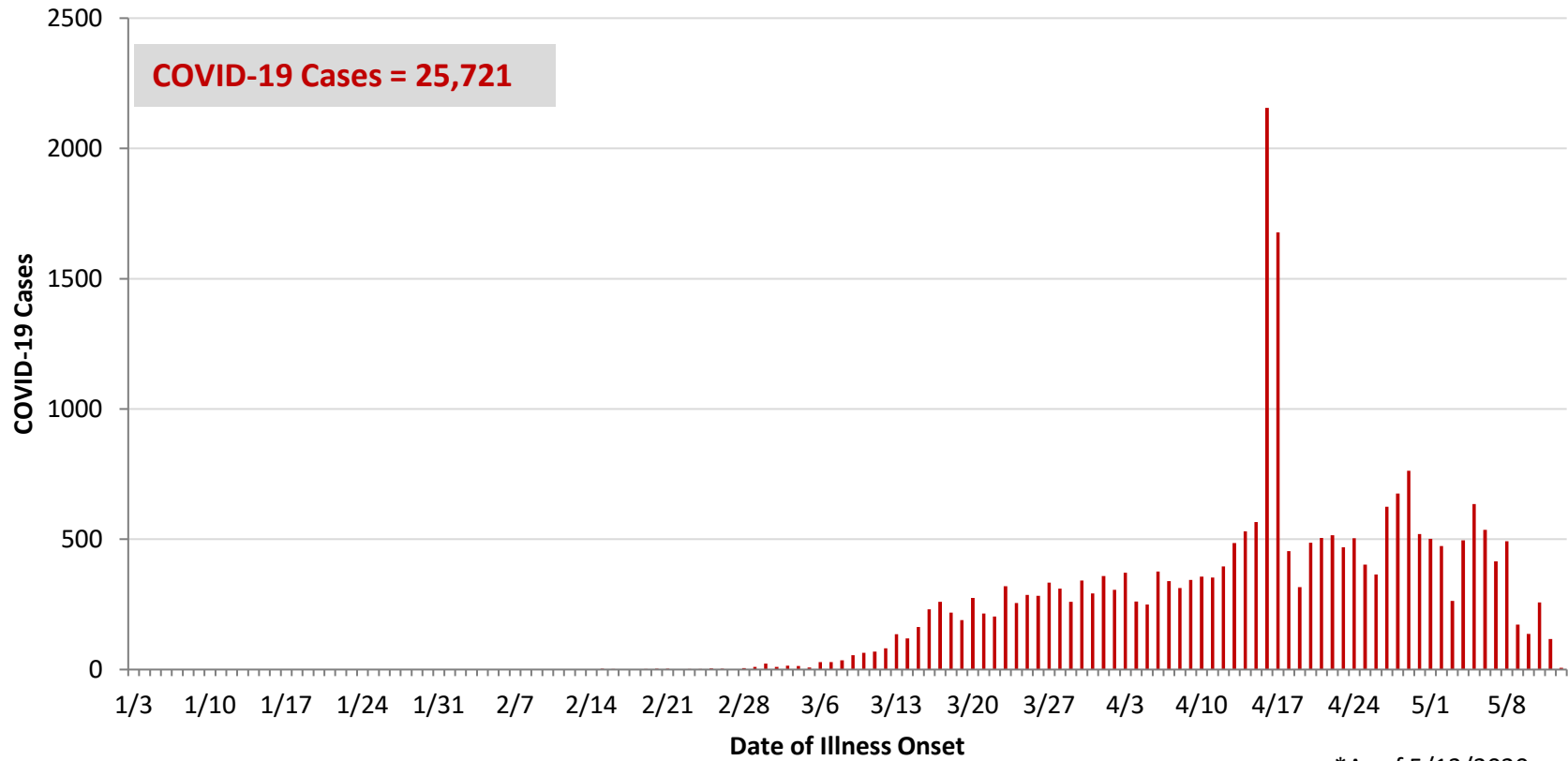
**Ohio, West Central Ohio (WCO), and Montgomery County COVID-19 Cases
As of 5/13/20**

Source: The State of Ohio COVID-19 Dashboard, Ohio Department of Health

Ohio:

Preliminary COVID-19 Cases Ohio, As of 5/13/2020		
Sex	# Cases	% Cases
Female	11,732	46%
Male	13,824	54%
Unknown	165	1%
Total	25,721	100%
Age Group		
Age Group	# Cases	% Cases
0-19	853	3%
20-29	3,330	13%
30-39	4,122	16%
40-49	4,109	16%
50-59	4,378	17%
60-69	3,658	14%
70-79	2,382	9%
80+	2,865	11%
Unknown	24	0%
Total	25,721	100%
Hospitalized	4,618	18.0%
Deaths	1,483	5.8%
Age Group	Deaths	% of Deaths
0-19	0	0%
20-29	3	0%
30-39	9	1%
40-49	23	2%
50-59	81	5%
60-69	214	14%
70-79	385	26%
80+	768	52%
Total	1,483	100%

**PRELIMINARY COVID-19 Cases by Date of Illness Onset
Ohio, 1/3/20 - 5/13/20***

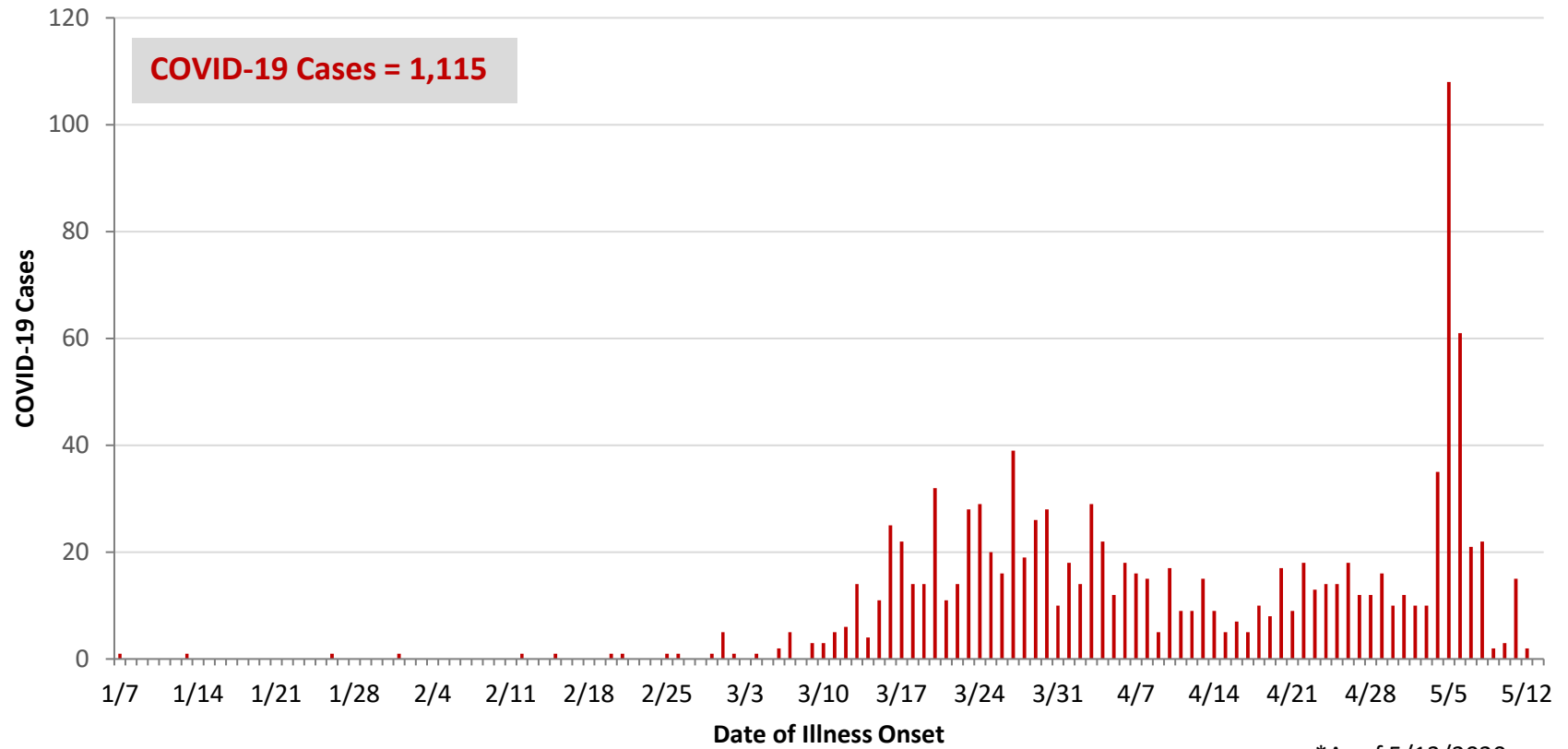


*As of 5/13/2020

WCO:

Preliminary COVID-19 Cases West Central Ohio, As of 5/13/2020		
County	# Cases	% Cases
Champaign	21	2%
Clark	114	10%
Darke	93	8%
Greene	68	6%
Miami	316	28%
Montgomery	442	40%
Preble	28	3%
Shelby	33	3%
Total	1,115	100%
Sex		
Sex	# Cases	% Cases
Female	609	55%
Male	442	40%
Unknown	64	6%
Total	1,115	100%
Age Group		
Age Group	# Cases	% Cases
0-19	46	4%
20-29	130	12%
30-39	151	14%
40-49	137	12%
50-59	206	18%
60-69	185	17%
70-79	117	10%
80+	143	13%
Total	1,115	100%
Hospitalized	254	22.8%
Deaths	66	5.9%
Age Group		
Age Group	Deaths	% of Deaths
0-19	0	0%
20-29	0	0%
30-39	1	2%
40-49	1	2%
50-59	4	6%
60-69	11	17%
70-79	11	17%
80+	38	58%
Total	66	100%

**PRELIMINARY COVID-19 Cases by Date of Illness Onset
West Central Ohio, 1/7/20 - 5/13/20***



*As of 5/13/2020

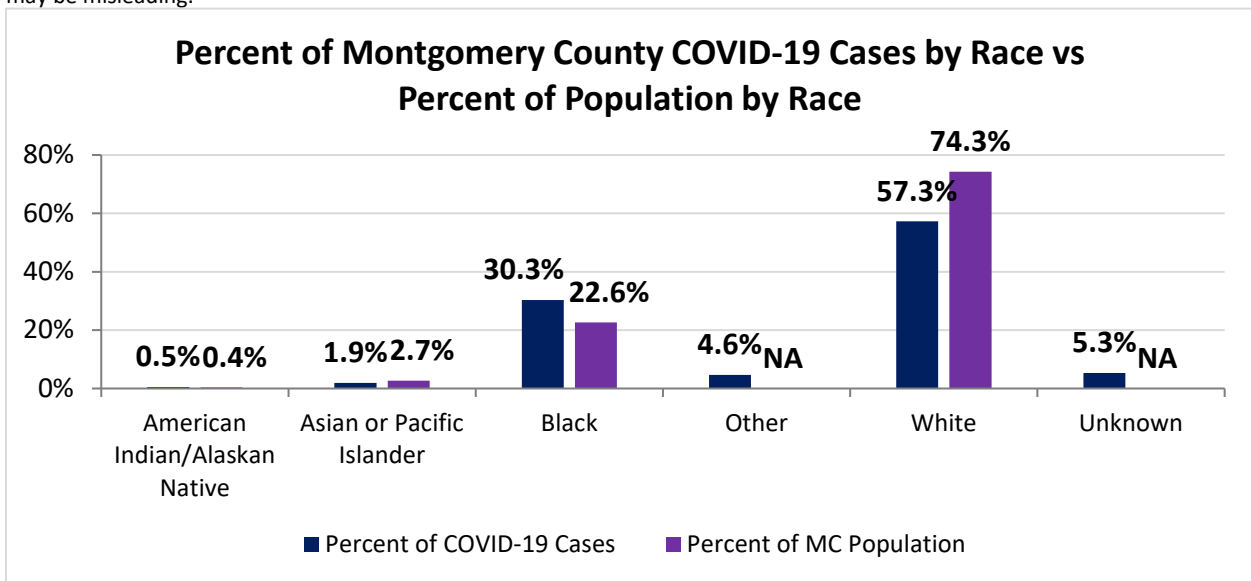
Montgomery County:

Preliminary COVID-19 Cases, Montgomery County, As of 5/13/2020		
Sex	# Cases	% Cases
Female	235	53%
Male	201	45%
Unknown	6	1%
Total	442	100%
Age Group		
Age Group	# Cases	% Cases
0-19	21	5%
20-29	51	12%
30-39	65	15%
40-49	65	15%
50-59	100	23%
60-69	84	19%
70-79	36	8%
80+	20	5%
Total	442	100%
Hospitalized		
Hospitalized	133	30.1%
Deaths		
Deaths	11	2.5%
Age Group		
Age Group	Deaths	% of Deaths
0-19	0	0%
20-29	0	0%
30-39	0	0%
40-49	1	9%
50-59	1	9%
60-69	3	27%
70-79	0	0%
80+	6	55%
Total	11	100%

Source: Ohio Disease Reporting System, ODH

Montgomery County COVID-19 Cases by Race As of 5/11/20			
Race	Count	Percent	Rate
American Indian/Alaskan Native (AI/AN)*	2	0%	93.1
Asian	8	2%	56.2
Black	125	30%	103.9
Other	19	5%	0.0
White	236	57%	59.7
Unknown	22	5%	0.0
Total	412	100%	77.4

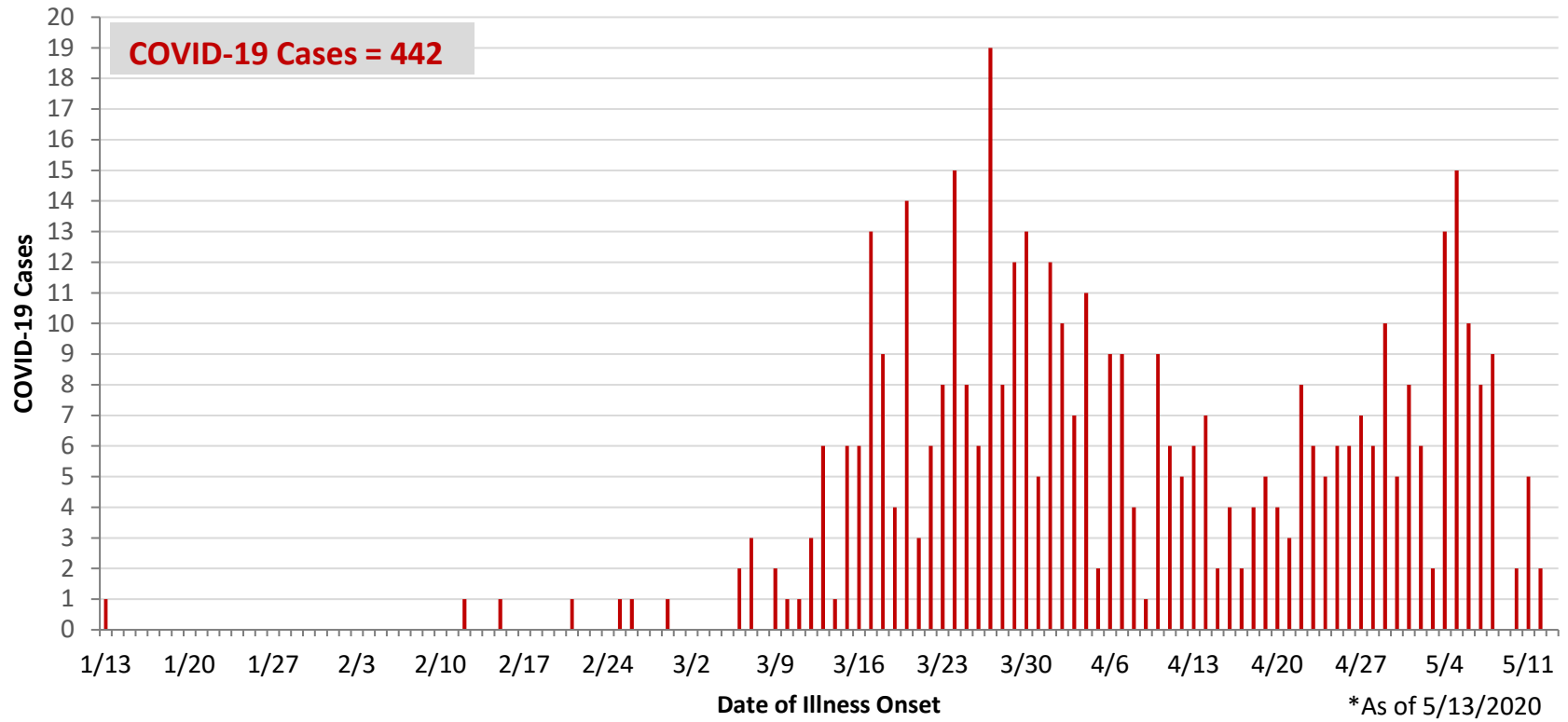
*Note. AI/ANs account for 0.4% of Montgomery County's population, and therefore, rates for this population will be large and may be misleading.



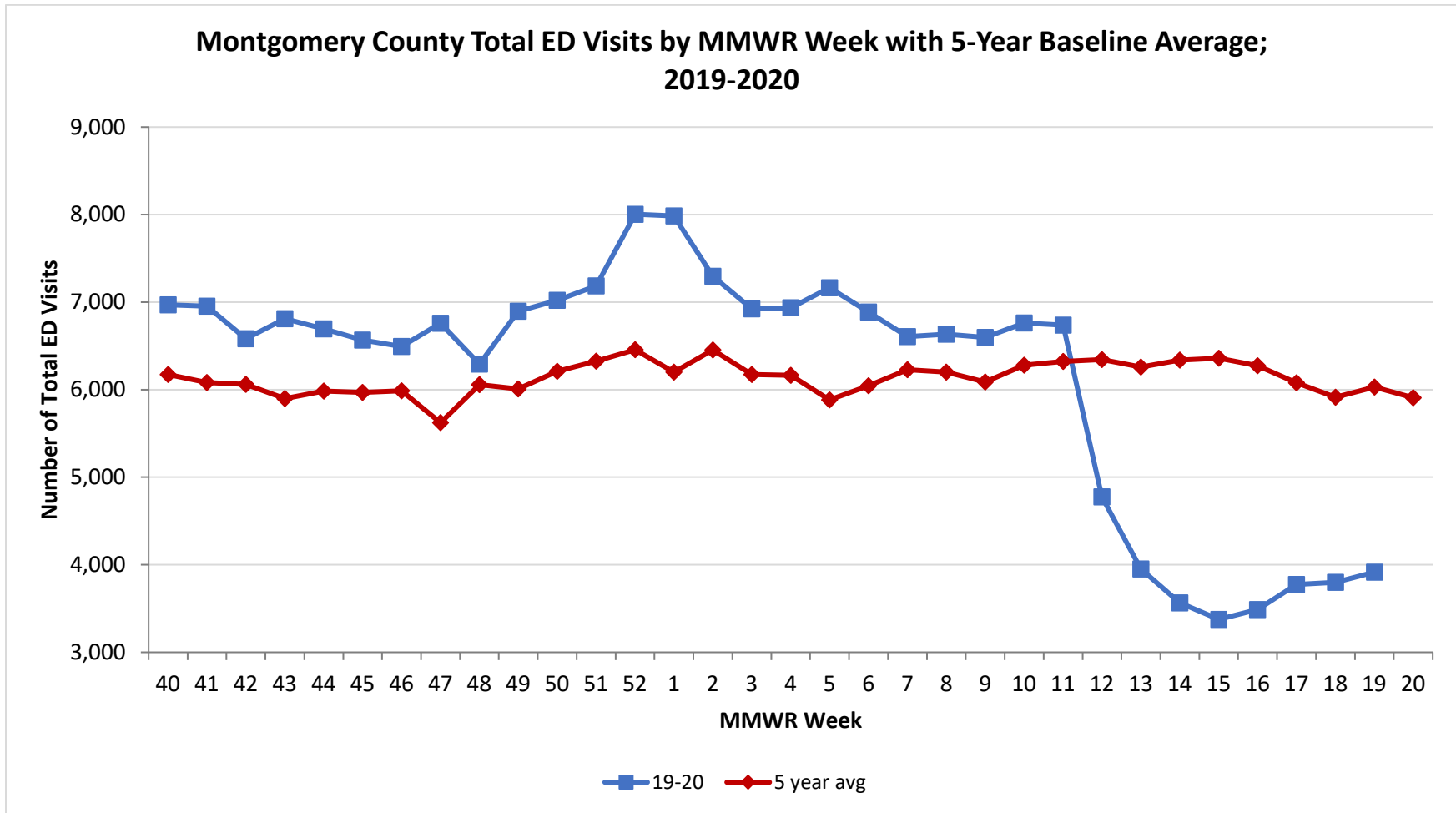
Montgomery County COVID-19 Cases by Health Care Worker Status As of 5/11/20		
Status	#	%
Health Care Worker	86	21%
Non-Health Care Worker	263	64%
Unknown	63	15%
Total	412	100%

Montgomery County COVID-19 Cases Age Range As of 5/11/20	
Stat	Age in Years
Age Range	1 - 95
Average Age	49.5
Median Age	52.0

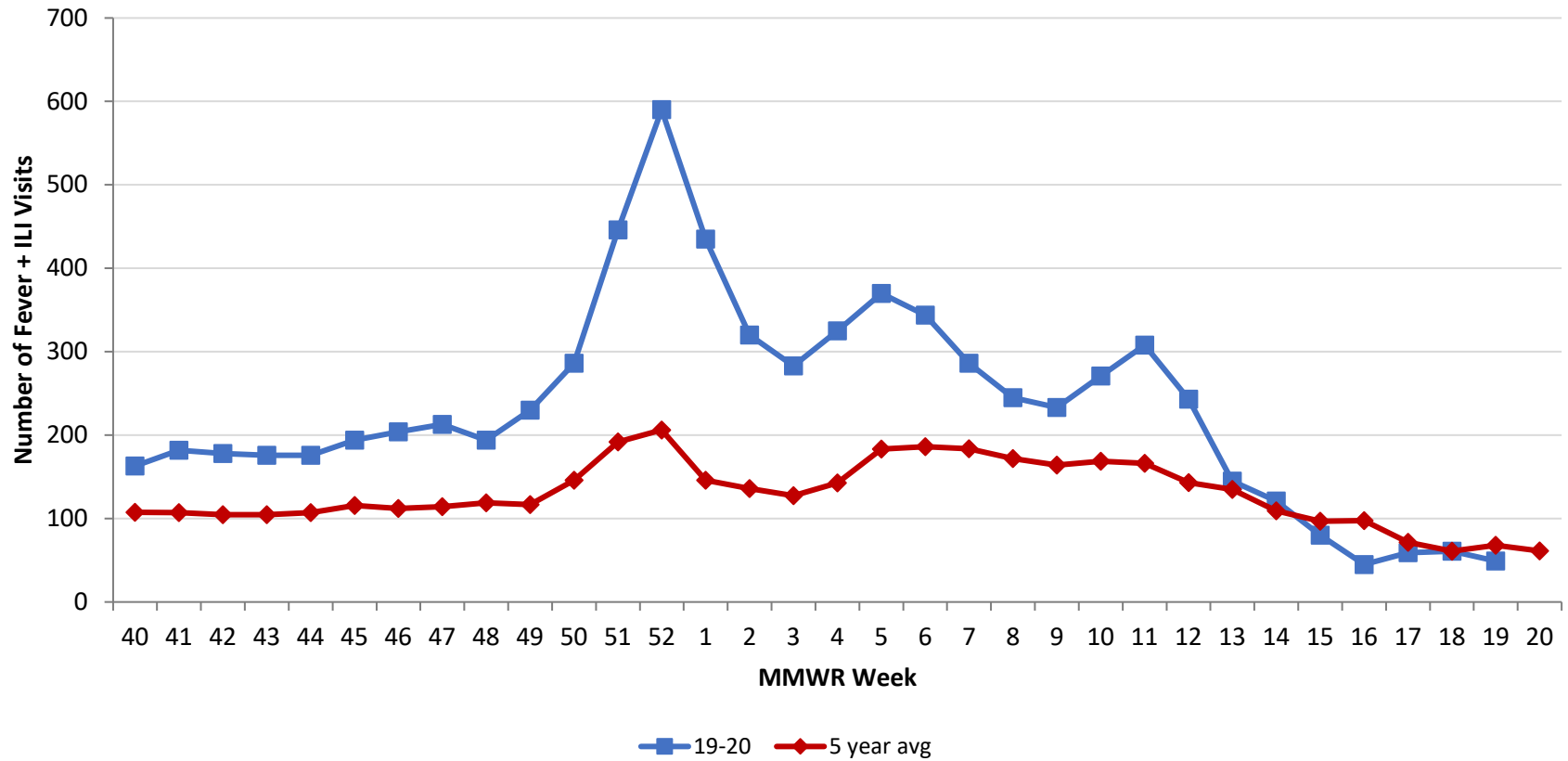
**PRELIMINARY COVID-19 Cases by Date of Illness Onset
Montgomery County, 1/13/20 - 5/13/20***



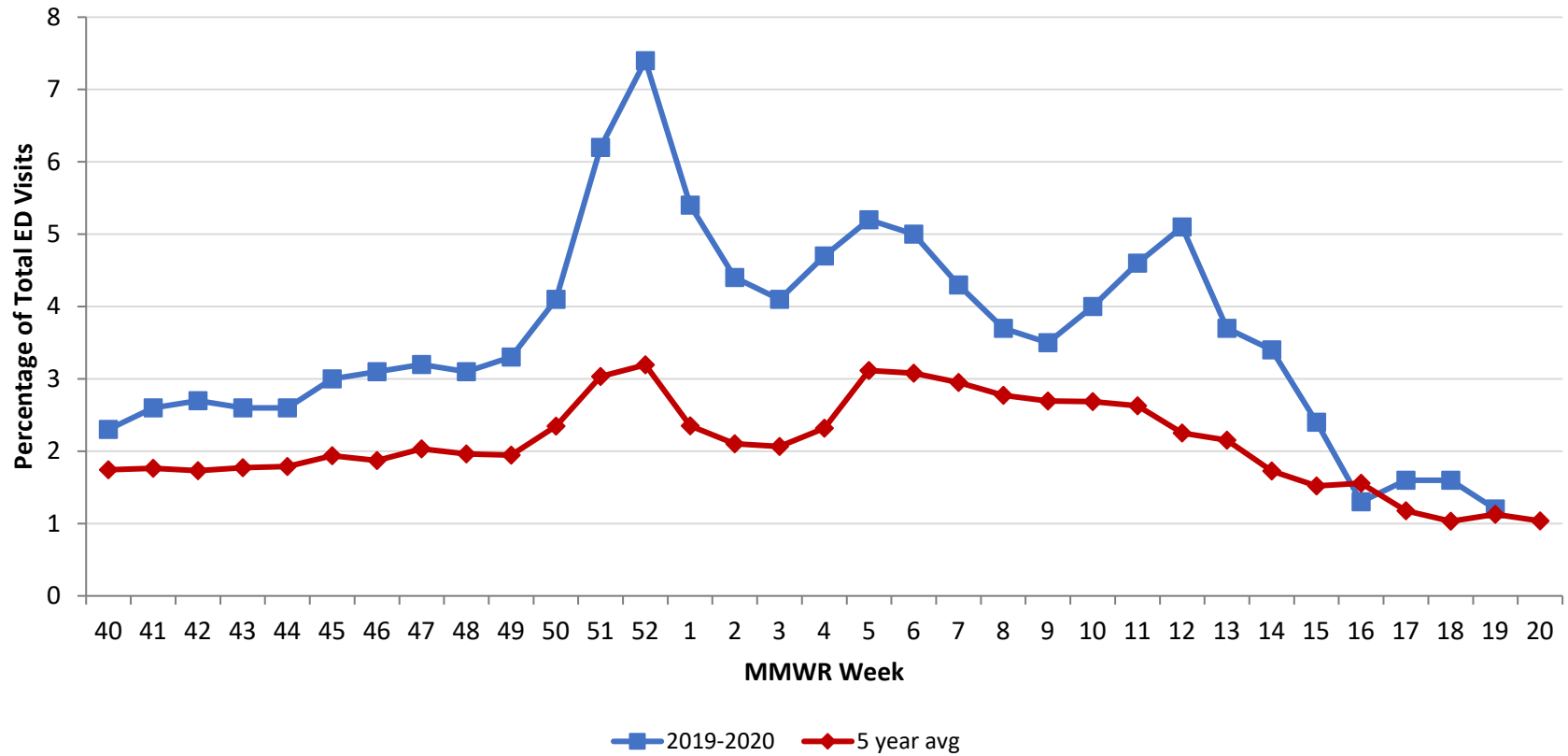
Source: EpiCenter Syndromic Surveillance, Health Monitoring Systems



**Montgomery County Fever + ILI Specified ED Visits by MMWR Week with 5-Year Baseline
Average; 2019-2020**



Montgomery County Fever + ILI Specified ED Visits by MMWR Week with 5-Year Baseline Average; 2019-2020



# Total Visits		
MMWR Week	19-20	5-Year Average
40	6,970	6,173.4
41	6,955	6,082.8
42	6,581	6,061.6
43	6,810	5,899.6
44	6,694	5,982.4
45	6,567	5,968.0
46	6,494	5,987.6
47	6,760	5,622.8
48	6,292	6,056.8
49	6,895	6,008.0
50	7,022	6,209.8
51	7,185	6,324.4
52	8,005	6,456.0
1	7,986	6,200.8
2	7,297	6,452.4
3	6,924	6,172.9
4	6,935	6,164.0
5	7,164	5,881.8
6	6,888	6,045.0
7	6,605	6,226.8
8	6,633	6,200.6
9	6,597	6,088.2
10	6,763	6,279.6
11	6,738	6,321.6
12	4,775	6,345.0
13	3,592	6,259.8
14	3,565	6,337.4
15	3,376	6,359.8
16	3,489	6,274.0
17	3,774	6,079.8
18	3,798	5,913.4
19	3,915	6,029.6
20	-	5,908.8

# Fever + ILI Visits		
MMWR Week	19-20	5-Year Average
40	163	107.6
41	182	107.2
42	178	104.8
43	176	104.6
44	176	107.0
45	194	115.6
46	204	112.0
47	213	114.4
48	194	118.8
49	230	116.8
50	286	145.8
51	446	191.8
52	590	206.2
1	435	145.8
2	320	135.8
3	283	127.4
4	325	142.8
5	370	183.2
6	344	186.2
7	286	183.8
8	245	171.8
9	233	164.0
10	271	168.6
11	308	166.2
12	243	143.0
13	145	134.8
14	121	109.4
15	80	96.8
16	45	97.6
17	59	71.6
18	61	61.0
19	49	68.0
20	-	61.2

% Fever + ILI Visits		
MMWR Week	19-20	5-Year Average
40	2.3	1.7
41	2.6	1.8
42	2.7	1.7
43	2.6	1.8
44	2.6	1.8
45	3.0	1.9
46	3.1	1.9
47	3.2	2.0
48	3.1	2.0
49	3.3	1.9
50	4.1	2.3
51	6.2	3.0
52	7.4	3.2
1	5.4	2.4
2	4.4	2.1
3	4.1	2.1
4	4.7	2.3
5	5.2	3.1
6	5	3.1
7	4.3	3.0
8	3.7	2.8
9	3.5	2.7
10	4	2.7
11	4.6	2.6
12	5.1	2.3
13	3.7	2.2
14	3.4	1.7
15	2.4	1.5
16	1.3	1.6
17	1.6	1.2
18	1.6	1.0
19	1.2	1.1
20	-	1.0