



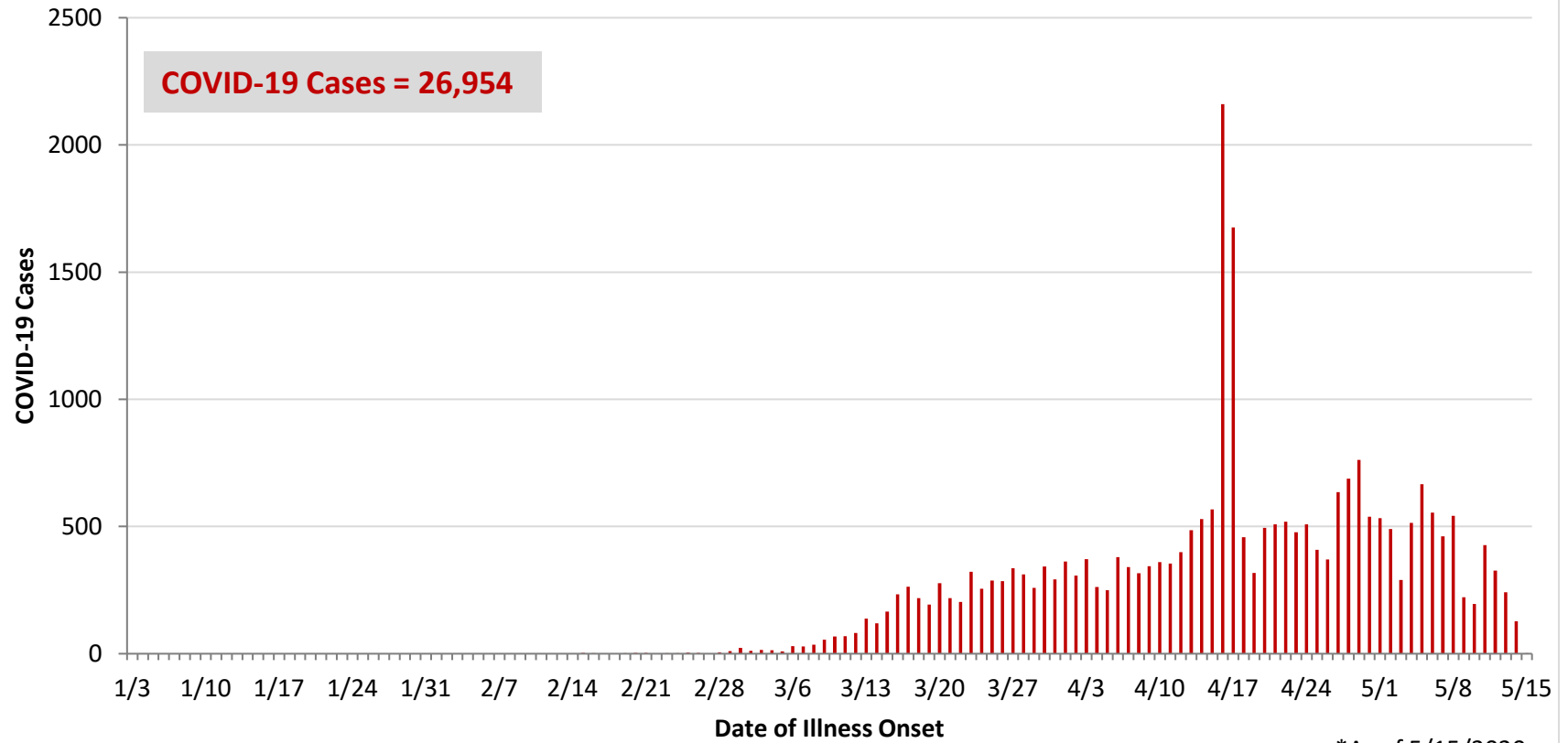
**Ohio, West Central Ohio (WCO), and Montgomery County COVID-19 Cases
As of 5/15/20**

Source: The State of Ohio COVID-19 Dashboard, Ohio Department of Health

Ohio:

Preliminary COVID-19 Cases Ohio, As of 5/15/2020		
Sex	# Cases	% Cases
Female	12,324	46%
Male	14,454	54%
Unknown	176	1%
Total	26,954	100%
Age Group		
Age Group	# Cases	% Cases
0-19	949	4%
20-29	3,501	13%
30-39	4,332	16%
40-49	4,310	16%
50-59	4,592	17%
60-69	3,803	14%
70-79	2,467	9%
80+	2,977	11%
Unknown	23	0%
Total	26,954	100%
Hospitalized		
Hospitalized	4,791	17.8%
Deaths		
Deaths	1,581	5.9%
Age Group		
Age Group	Deaths	% of Deaths
0-19	0	0%
20-29	4	0%
30-39	11	1%
40-49	24	2%
50-59	86	5%
60-69	228	14%
70-79	403	25%
80+	825	52%
Total	1,581	100%

**PRELIMINARY COVID-19 Cases by Date of Illness Onset
Ohio, 1/3/20 - 5/15/20***

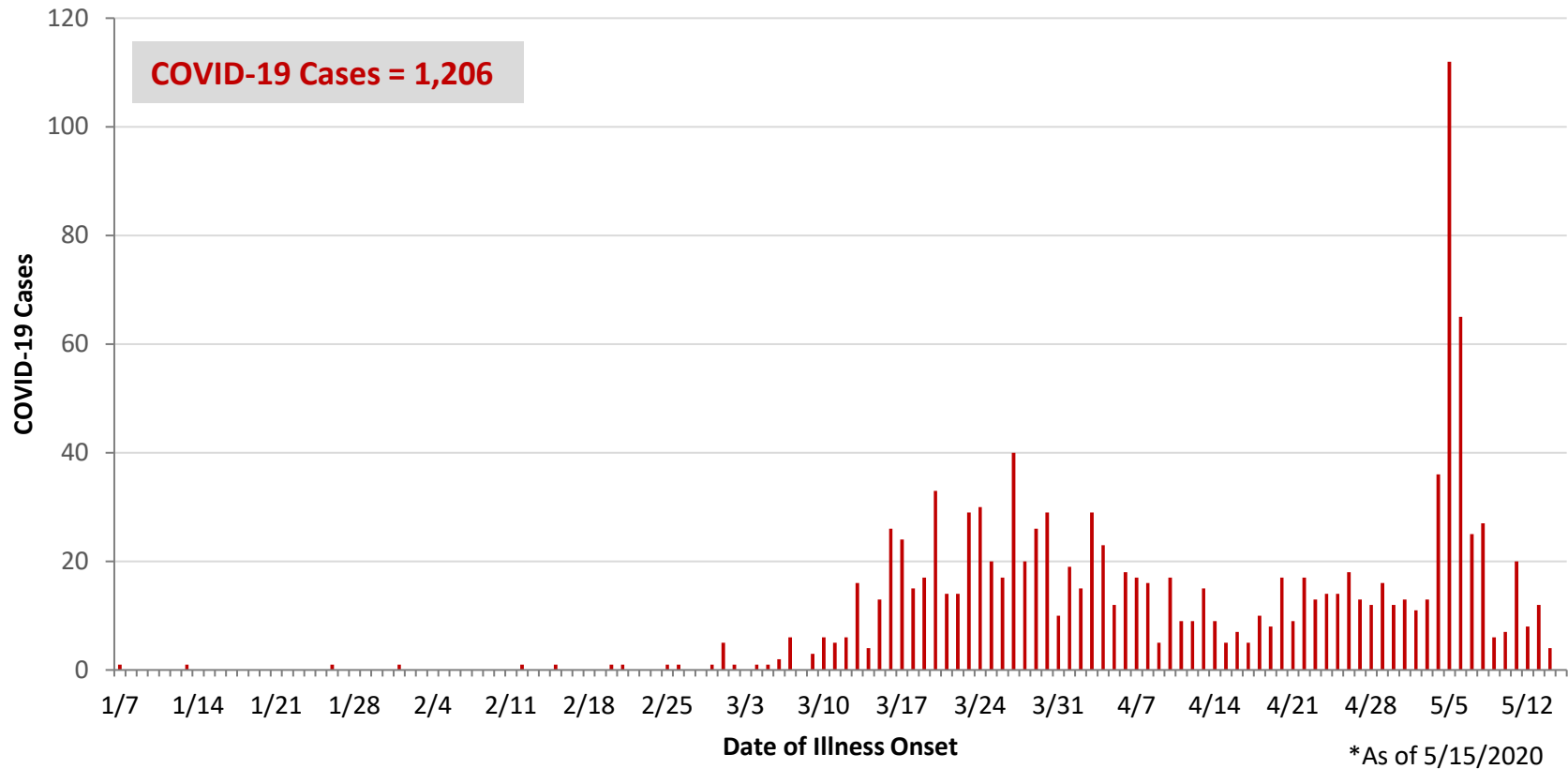


*As of 5/15/2020

WCO:

Preliminary COVID-19 Cases West Central Ohio, As of 5/15/2020		
County	# Cases	% Cases
Champaign	22	2%
Clark	131	11%
Darke	102	8%
Greene	73	6%
Miami	326	27%
Montgomery	489	41%
Preble	28	2%
Shelby	35	3%
Total	1,206	100%
Sex		
Sex	# Cases	% Cases
Female	658	55%
Male	482	40%
Unknown	66	5%
Total	1,206	100%
Age Group		
Age Group	# Cases	% Cases
0-19	50	4%
20-29	139	12%
30-39	168	14%
40-49	152	13%
50-59	228	19%
60-69	199	17%
70-79	120	10%
80+	150	12%
Total	1,206	100%
Hospitalized	262	21.7%
Deaths	69	5.7%
Age Group		
Age Group	Deaths	% of Deaths
0-19	0	0%
20-29	0	0%
30-39	1	1%
40-49	1	1%
50-59	5	7%
60-69	10	14%
70-79	12	17%
80+	40	58%
Total	69	100%

**PRELIMINARY COVID-19 Cases by Date of Illness Onset
West Central Ohio, 1/7/20 - 5/15/20***



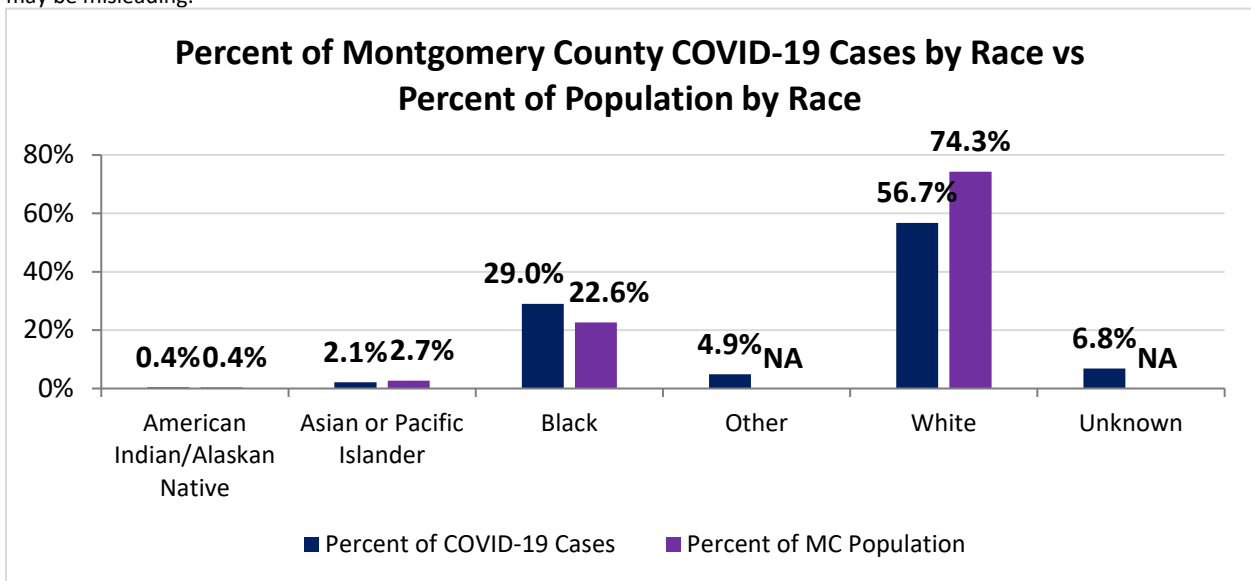
Montgomery County:

Preliminary COVID-19 Cases, Montgomery County, As of 5/15/2020		
Sex	# Cases	% Cases
Female	262	54%
Male	221	45%
Unknown	6	1%
Total	489	100%
Age Group		
Age Group	# Cases	% Cases
0-19	23	5%
20-29	57	12%
30-39	74	15%
40-49	73	15%
50-59	111	23%
60-69	92	19%
70-79	37	8%
80+	22	4%
Total	489	100%
Hospitalized		
Hospitalized	142	29.0%
Deaths		
Deaths	12	2.5%
Age Group		
Age Group	Deaths	% of Deaths
0-19	0	0%
20-29	0	0%
30-39	0	0%
40-49	1	8%
50-59	2	17%
60-69	3	25%
70-79	0	0%
80+	6	50%
Total	12	100%

Source: Ohio Disease Reporting System, ODH

Montgomery County COVID-19 Cases by Race As of 5/14/20			
Race	Count	Percent	Rate
American Indian/Alaskan Native (AI/AN)*	2	0%	93.1
Asian	10	2%	70.3
Black	136	29%	113.0
Other	23	5%	0.0
White	266	57%	67.2
Unknown	32	7%	0.0
Total	469	100%	88.1

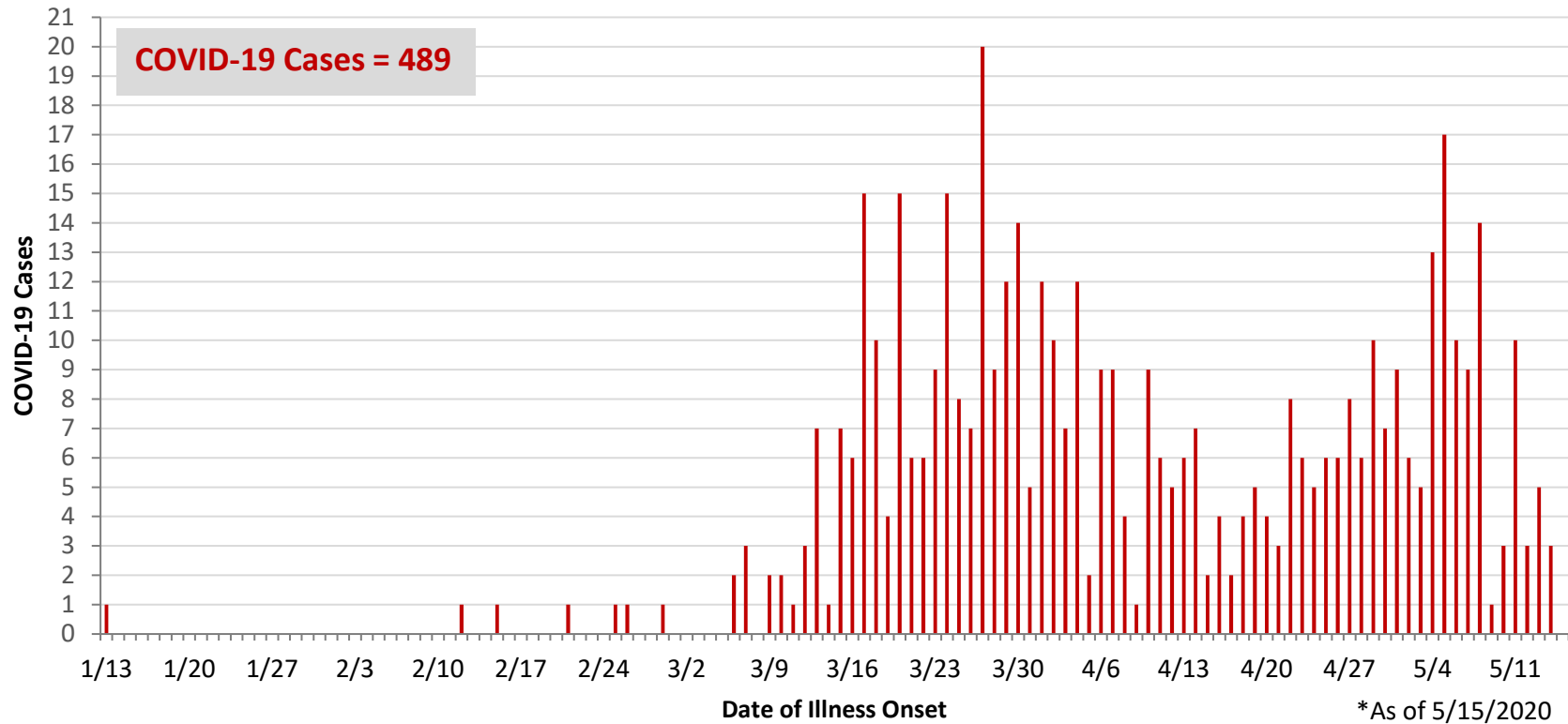
*Note. AI/ANs account for 0.4% of Montgomery County's population, and therefore, rates for this population will be large and may be misleading.



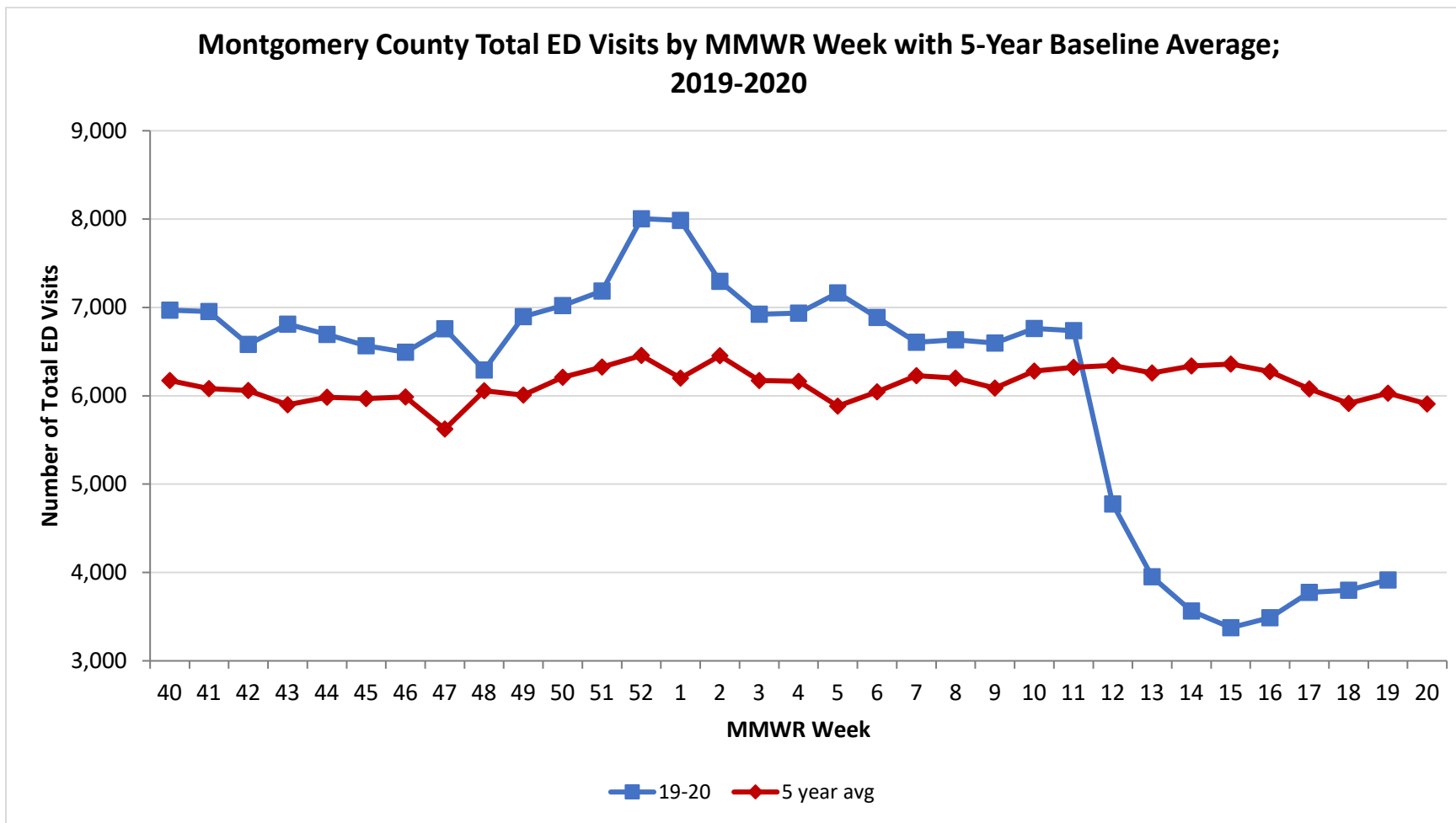
Montgomery County COVID-19 Cases by Health Care Worker Status As of 5/14/20		
Status	#	%
Health Care Worker	97	21%
Non-Health Care Worker	304	65%
Unknown	68	14%
Total	469	100%

Montgomery County COVID-19 Cases Age Range As of 5/14/20	
Stat	Age in Years
Age Range	1 - 95
Average Age	49.2
Median Age	51.0

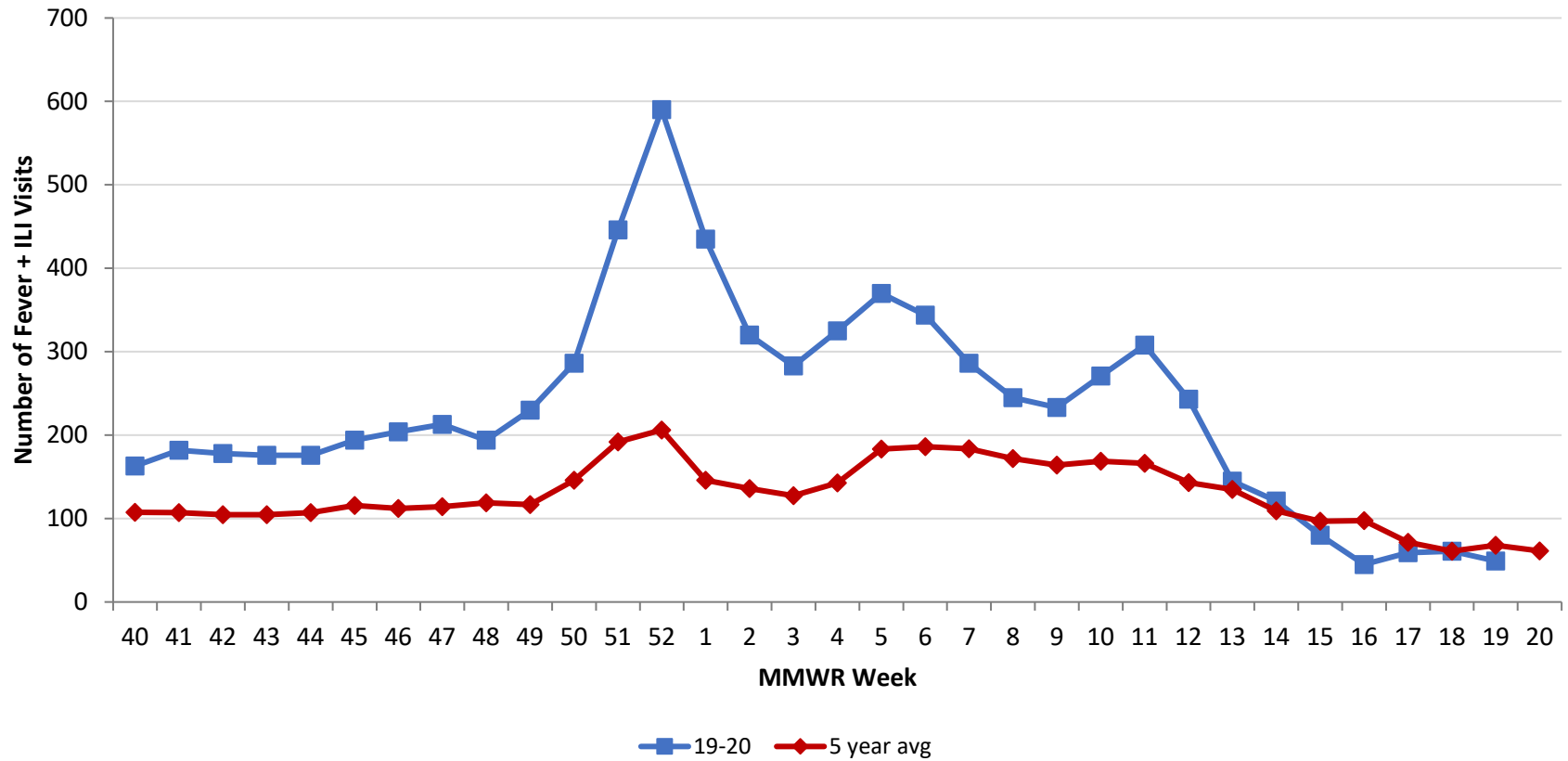
**PRELIMINARY COVID-19 Cases by Date of Illness Onset
Montgomery County, 1/13/20 - 5/15/20***



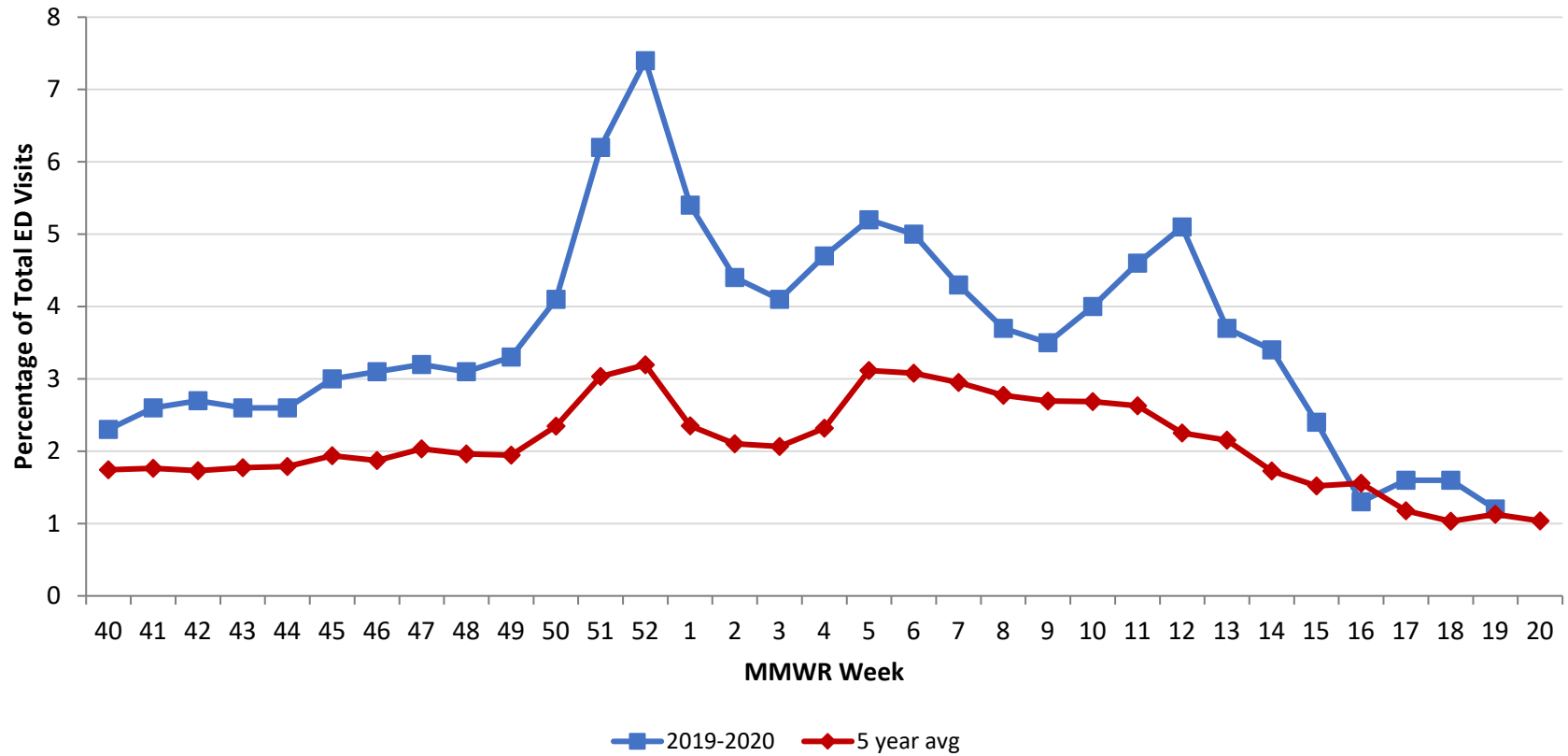
Source: EpiCenter Syndromic Surveillance, Health Monitoring Systems



Montgomery County Fever + ILI Specified ED Visits by MMWR Week with 5-Year Baseline Average; 2019-2020



Montgomery County Fever + ILI Specified ED Visits by MMWR Week with 5-Year Baseline Average; 2019-2020



# Total Visits		
MMWR Week	19-20	5-Year Average
40	6,970	6,173.4
41	6,955	6,082.8
42	6,581	6,061.6
43	6,810	5,899.6
44	6,694	5,982.4
45	6,567	5,968.0
46	6,494	5,987.6
47	6,760	5,622.8
48	6,292	6,056.8
49	6,895	6,008.0
50	7,022	6,209.8
51	7,185	6,324.4
52	8,005	6,456.0
1	7,986	6,200.8
2	7,297	6,452.4
3	6,924	6,172.9
4	6,935	6,164.0
5	7,164	5,881.8
6	6,888	6,045.0
7	6,605	6,226.8
8	6,633	6,200.6
9	6,597	6,088.2
10	6,763	6,279.6
11	6,738	6,321.6
12	4,775	6,345.0
13	3,592	6,259.8
14	3,565	6,337.4
15	3,376	6,359.8
16	3,489	6,274.0
17	3,774	6,079.8
18	3,798	5,913.4
19	3,915	6,029.6
20	-	5,908.8

# Fever + ILI Visits		
MMWR Week	19-20	5-Year Average
40	163	107.6
41	182	107.2
42	178	104.8
43	176	104.6
44	176	107.0
45	194	115.6
46	204	112.0
47	213	114.4
48	194	118.8
49	230	116.8
50	286	145.8
51	446	191.8
52	590	206.2
1	435	145.8
2	320	135.8
3	283	127.4
4	325	142.8
5	370	183.2
6	344	186.2
7	286	183.8
8	245	171.8
9	233	164.0
10	271	168.6
11	308	166.2
12	243	143.0
13	145	134.8
14	121	109.4
15	80	96.8
16	45	97.6
17	59	71.6
18	61	61.0
19	49	68.0
20	-	61.2

% Fever + ILI Visits		
MMWR Week	19-20	5-Year Average
40	2.3	1.7
41	2.6	1.8
42	2.7	1.7
43	2.6	1.8
44	2.6	1.8
45	3.0	1.9
46	3.1	1.9
47	3.2	2.0
48	3.1	2.0
49	3.3	1.9
50	4.1	2.3
51	6.2	3.0
52	7.4	3.2
1	5.4	2.4
2	4.4	2.1
3	4.1	2.1
4	4.7	2.3
5	5.2	3.1
6	5	3.1
7	4.3	3.0
8	3.7	2.8
9	3.5	2.7
10	4	2.7
11	4.6	2.6
12	5.1	2.3
13	3.7	2.2
14	3.4	1.7
15	2.4	1.5
16	1.3	1.6
17	1.6	1.2
18	1.6	1.0
19	1.2	1.1
20	-	1.0