



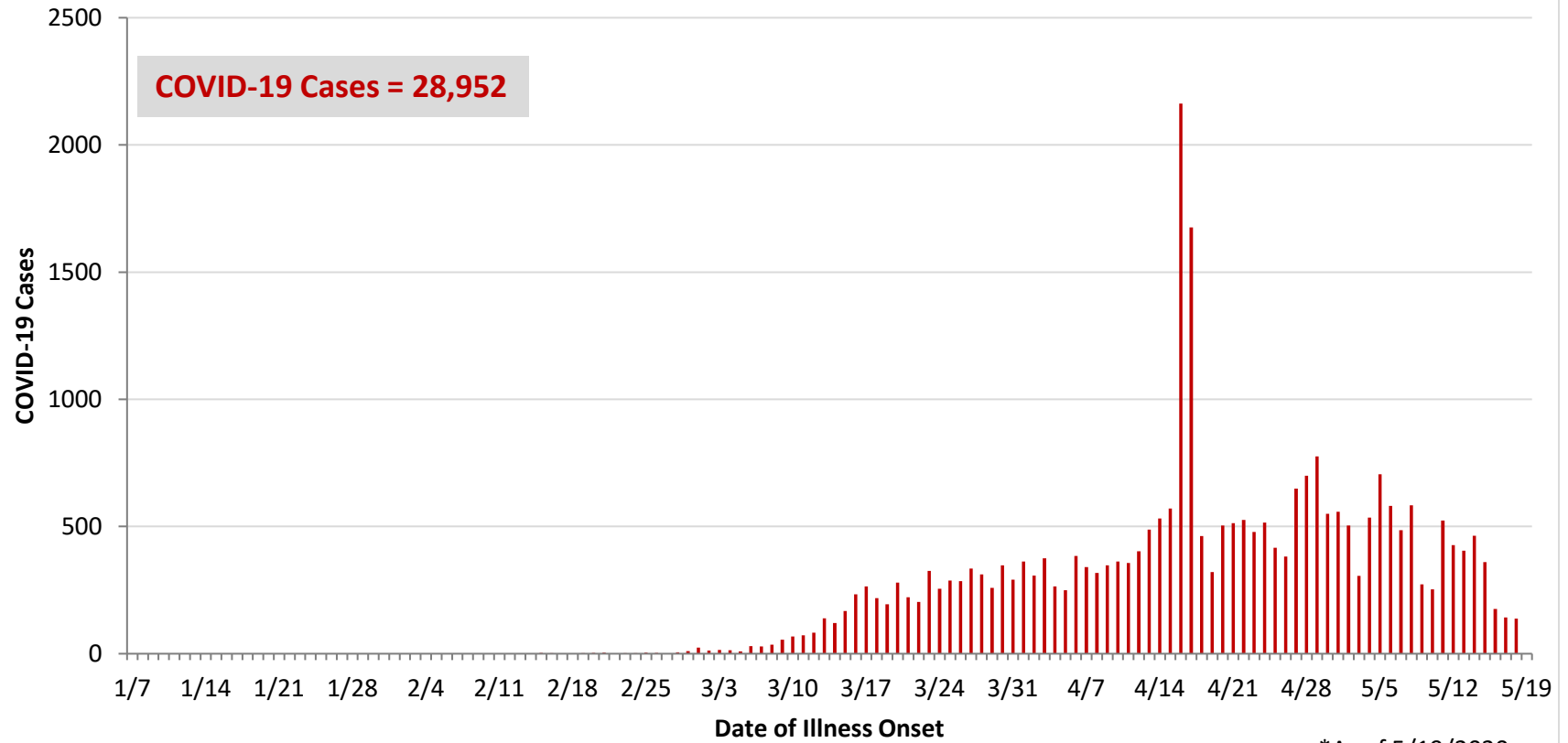
**Ohio, West Central Ohio (WCO), and Montgomery County COVID-19 Cases
As of 5/19/20**

Source: The State of Ohio COVID-19 Dashboard, Ohio Department of Health

Ohio:

Preliminary COVID-19 Cases Ohio, As of 5/19/2020		
Sex	# Cases	% Cases
Female	13,345	46%
Male	15,417	53%
Unknown	190	1%
Total	28,952	100%
Age Group		
Age Group	# Cases	% Cases
0-19	1,091	4%
20-29	3,828	13%
30-39	4,648	16%
40-49	4,605	16%
50-59	4,901	17%
60-69	4,033	14%
70-79	2,622	9%
80+	3,201	11%
Unknown	23	0%
Total	28,952	100%
Hospitalized		
Hospitalized	5,117	17.7%
Deaths		
Deaths	1,720	5.9%
Age Group		
Age Group	Deaths	% of Deaths
0-19	0	0%
20-29	5	0%
30-39	12	1%
40-49	25	1%
50-59	96	6%
60-69	245	14%
70-79	434	25%
80+	903	53%
Total	1,720	100%

**PRELIMINARY COVID-19 Cases by Date of Illness Onset
Ohio, 1/7/20 - 5/19/20***

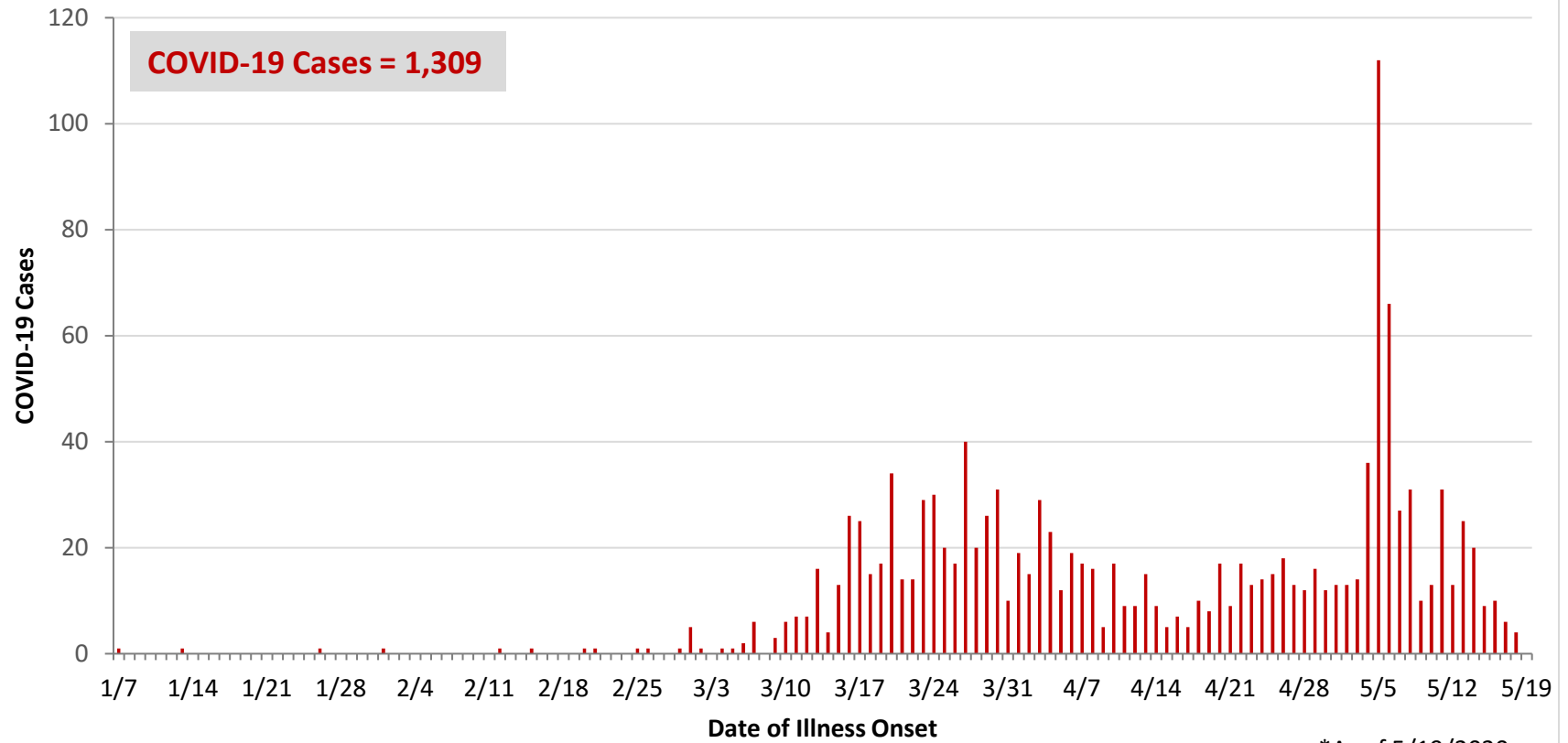


*As of 5/19/2020

WCO:

Preliminary COVID-19 Cases West Central Ohio, As of 5/19/2020		
County	# Cases	% Cases
Champaign	23	2%
Clark	155	12%
Darke	126	10%
Greene	78	6%
Miami	332	25%
Montgomery	531	41%
Preble	30	2%
Shelby	34	3%
Total	1,309	100%
Sex		
Sex	# Cases	% Cases
Female	708	54%
Male	534	41%
Unknown	67	5%
Total	1,309	100%
Age Group		
Age Group	# Cases	% Cases
0-19	60	5%
20-29	155	12%
30-39	188	14%
40-49	172	13%
50-59	240	18%
60-69	210	16%
70-79	124	9%
80+	160	12%
Total	1,309	100%
Hospitalized	277	21.2%
Deaths	72	5.5%
Age Group		
Age Group	Deaths	% of Deaths
0-19	0	0%
20-29	0	0%
30-39	2	3%
40-49	1	1%
50-59	5	7%
60-69	11	15%
70-79	12	17%
80+	41	57%
Total	72	100%

**PRELIMINARY COVID-19 Cases by Date of Illness Onset
West Central Ohio, 1/7/20 - 5/19/20***



*As of 5/19/2020

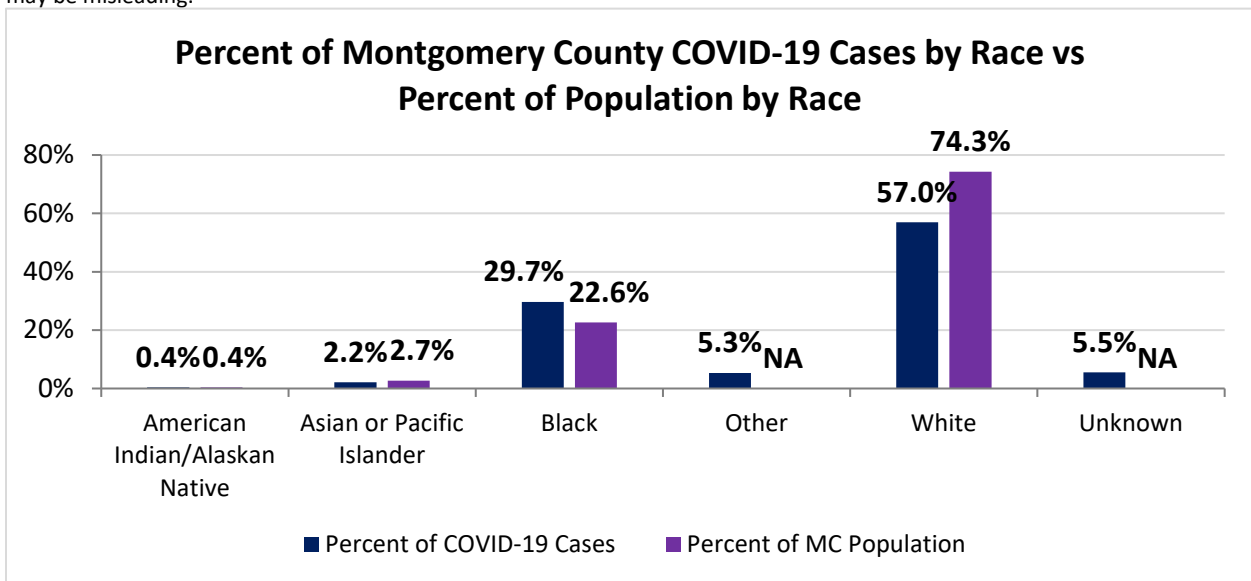
Montgomery County:

Preliminary COVID-19 Cases, Montgomery County, As of 5/19/2020		
Sex	# Cases	% Cases
Female	283	53%
Male	242	46%
Unknown	6	1%
Total	531	100%
Age Group		
Age Group	# Cases	% Cases
0-19	29	5%
20-29	62	12%
30-39	80	15%
40-49	81	15%
50-59	119	22%
60-69	97	18%
70-79	38	7%
80+	25	5%
Total	531	100%
Hospitalized		
Hospitalized	151	28.4%
Deaths		
Deaths	13	2.4%
Age Group		
Age Group	Deaths	% of Deaths
0-19	0	0%
20-29	0	0%
30-39	1	8%
40-49	1	8%
50-59	2	15%
60-69	3	23%
70-79	0	0%
80+	6	46%
Total	13	100%

Source: Ohio Disease Reporting System, ODH

Montgomery County COVID-19 Cases by Race As of 5/18/20			
Race	Count	Percent	Rate
American Indian/Alaskan Native (AI/AN)*	2	0.4%	93.1
Asian	11	2.2%	77.3
Black	151	29.7%	125.5
Other	27	5.3%	0.0
White	290	57.0%	73.3
Unknown	28	5.5%	0.0
Total	509	100%	95.6

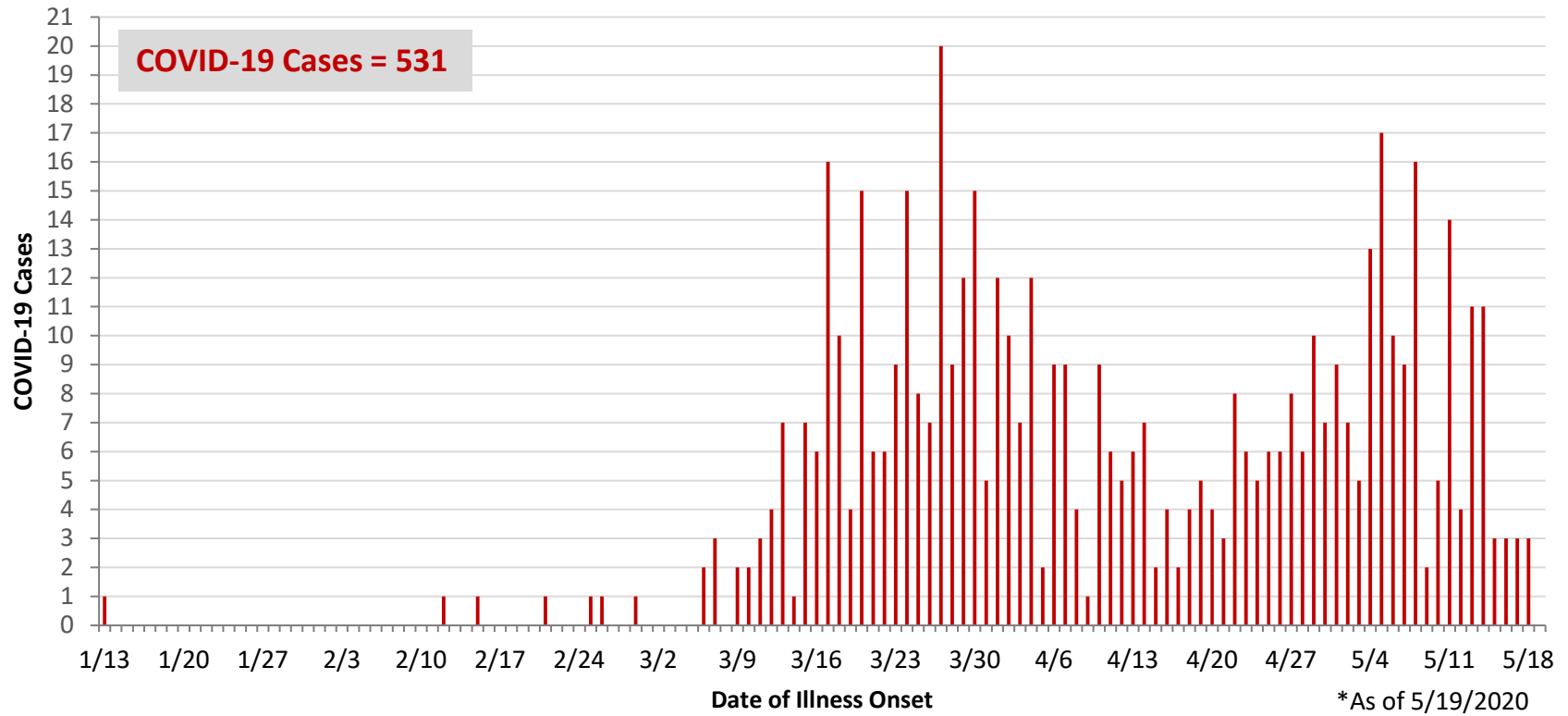
*Note. AI/ANs account for 0.4% of Montgomery County's population, and therefore, rates for this population will be large and may be misleading.



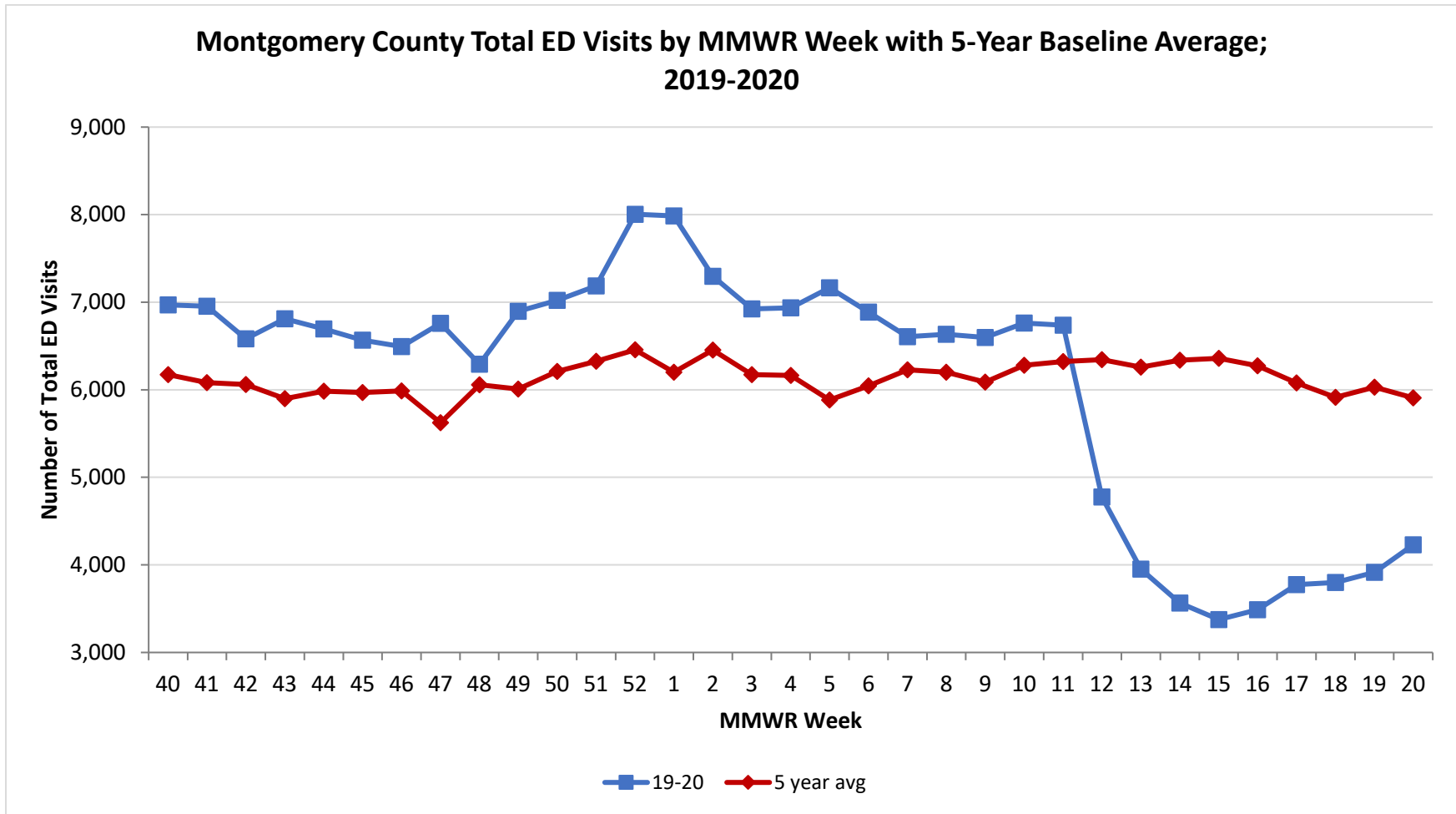
Montgomery County COVID-19 Cases by Health Care Worker Status As of 5/18/20		
Status	#	%
Health Care Worker	105	21%
Non-Health Care Worker	338	66%
Unknown	66	13%
Total	509	100%

Montgomery County COVID-19 Cases Age Range As of 5/18/20	
Stat	Age in Years
Age Range	1 - 95
Average Age	49.1
Median Age	51.0

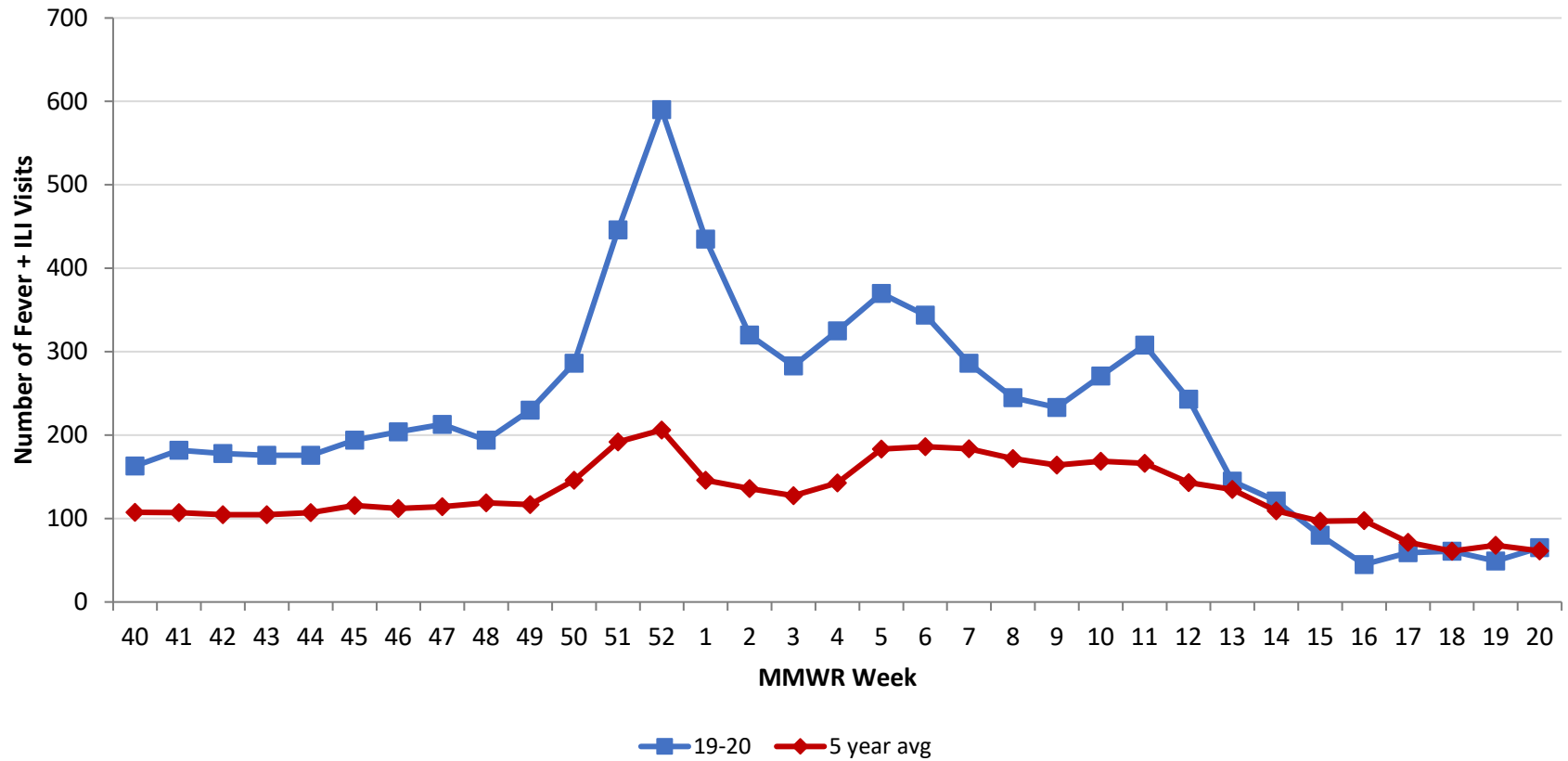
**PRELIMINARY COVID-19 Cases by Date of Illness Onset
Montgomery County, 1/13/20 - 5/19/20***



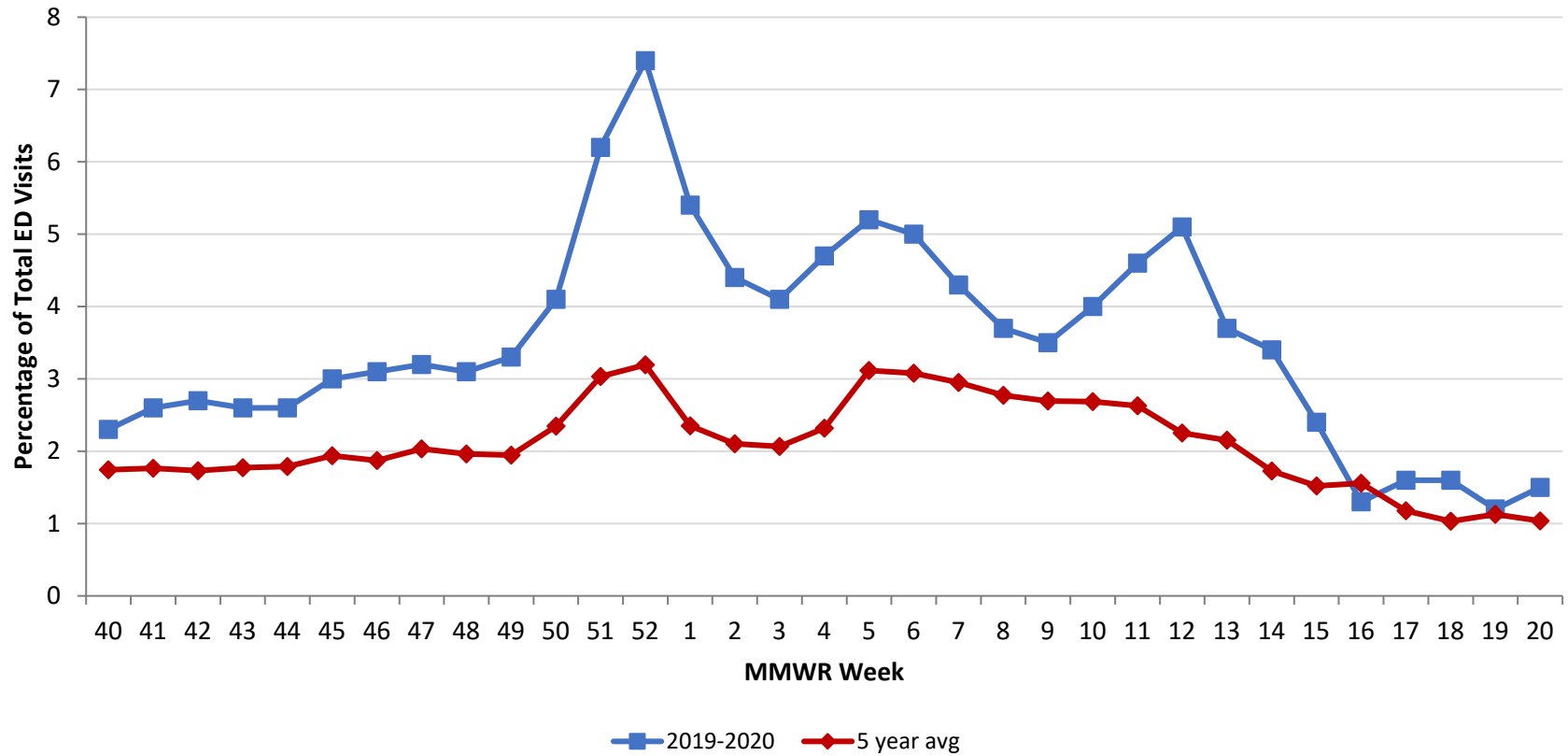
Source: EpiCenter Syndromic Surveillance, Health Monitoring Systems



Montgomery County Fever + ILI Specified ED Visits by MMWR Week with 5-Year Baseline Average; 2019-2020



Montgomery County Fever + ILI Specified ED Visits by MMWR Week with 5-Year Baseline Average; 2019-2020



# Total Visits		
MMWR Week	19-20	5-Year Average
40	6,970	6,173.4
41	6,955	6,082.8
42	6,581	6,061.6
43	6,810	5,899.6
44	6,694	5,982.4
45	6,567	5,968.0
46	6,494	5,987.6
47	6,760	5,622.8
48	6,292	6,056.8
49	6,895	6,008.0
50	7,022	6,209.8
51	7,185	6,324.4
52	8,005	6,456.0
1	7,986	6,200.8
2	7,297	6,452.4
3	6,924	6,172.9
4	6,935	6,164.0
5	7,164	5,881.8
6	6,888	6,045.0
7	6,605	6,226.8
8	6,633	6,200.6
9	6,597	6,088.2
10	6,763	6,279.6
11	6,738	6,321.6
12	4,775	6,345.0
13	3,592	6,259.8
14	3,565	6,337.4
15	3,376	6,359.8
16	3,489	6,274.0
17	3,774	6,079.8
18	3,798	5,913.4
19	3,915	6,029.6
20	4,231	5,908.8

# Fever + ILI Visits		
MMWR Week	19-20	5-Year Average
40	163	107.6
41	182	107.2
42	178	104.8
43	176	104.6
44	176	107.0
45	194	115.6
46	204	112.0
47	213	114.4
48	194	118.8
49	230	116.8
50	286	145.8
51	446	191.8
52	590	206.2
1	435	145.8
2	320	135.8
3	283	127.4
4	325	142.8
5	370	183.2
6	344	186.2
7	286	183.8
8	245	171.8
9	233	164.0
10	271	168.6
11	308	166.2
12	243	143.0
13	145	134.8
14	121	109.4
15	80	96.8
16	45	97.6
17	59	71.6
18	61	61.0
19	49	68.0
20	65	61.2

% Fever + ILI Visits		
MMWR Week	19-20	5-Year Average
40	2.3	1.7
41	2.6	1.8
42	2.7	1.7
43	2.6	1.8
44	2.6	1.8
45	3.0	1.9
46	3.1	1.9
47	3.2	2.0
48	3.1	2.0
49	3.3	1.9
50	4.1	2.3
51	6.2	3.0
52	7.4	3.2
1	5.4	2.4
2	4.4	2.1
3	4.1	2.1
4	4.7	2.3
5	5.2	3.1
6	5	3.1
7	4.3	3.0
8	3.7	2.8
9	3.5	2.7
10	4	2.7
11	4.6	2.6
12	5.1	2.3
13	3.7	2.2
14	3.4	1.7
15	2.4	1.5
16	1.3	1.6
17	1.6	1.2
18	1.6	1.0
19	1.2	1.1
20	1.5	1.0