



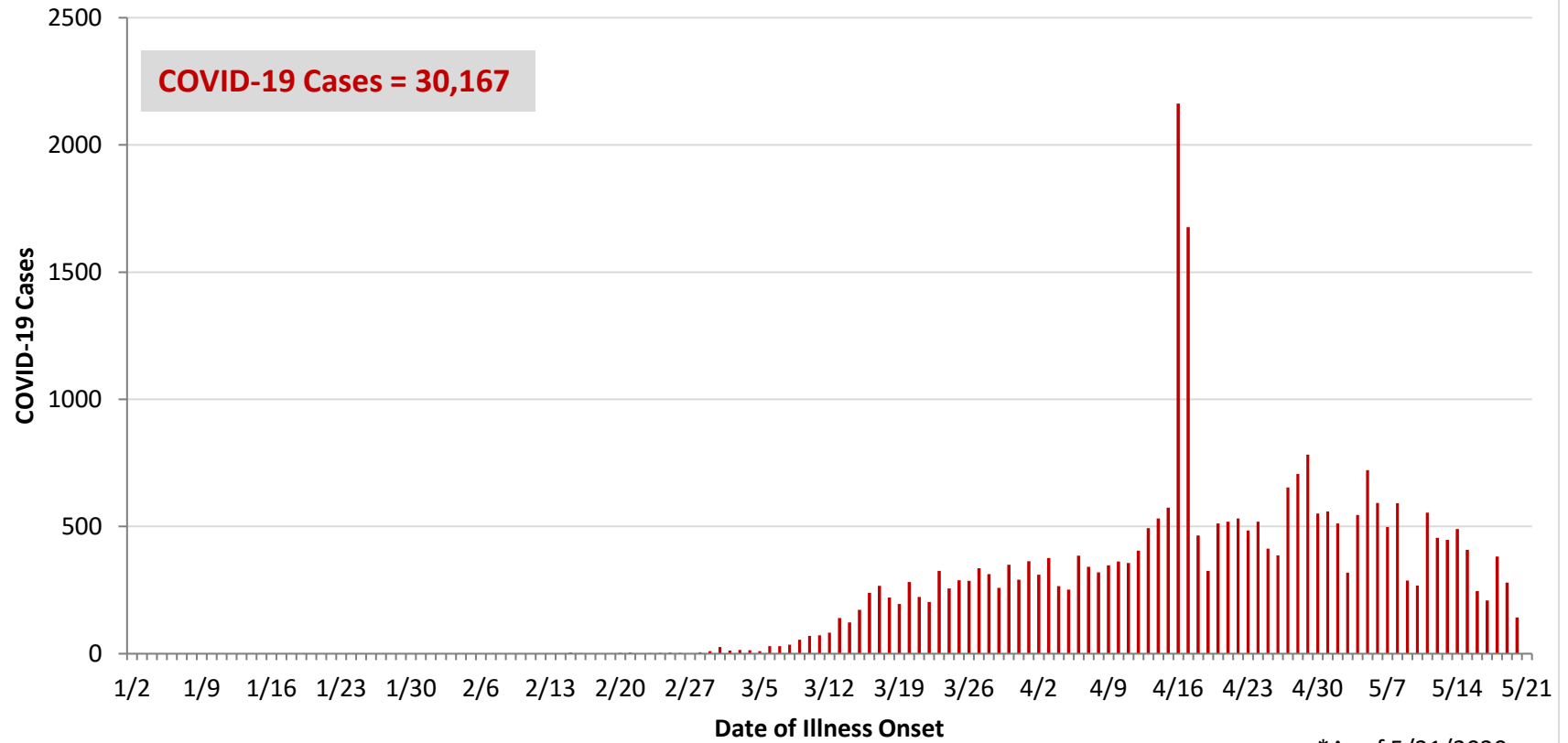
**Ohio, West Central Ohio (WCO), and Montgomery County COVID-19 Cases
As of 5/21/20**

Source: The State of Ohio COVID-19 Dashboard, Ohio Department of Health

Ohio:

Preliminary COVID-19 Cases Ohio, As of 5/21/2020		
Sex	# Cases	% Cases
Female	14,011	46%
Male	15,967	53%
Unknown	189	1%
Total	30,167	100%
Age Group		
Age Group	# Cases	% Cases
0-19	1,172	4%
20-29	4,056	13%
30-39	4,841	16%
40-49	4,792	16%
50-59	5,070	17%
60-69	4,170	14%
70-79	2,724	9%
80+	3,320	11%
Unknown	22	0%
Total	30,167	100%
Hospitalized		
Hospitalized	5,295	17.6%
Deaths		
Deaths	1,836	6.1%
Age Group		
Age Group	Deaths	% of Deaths
0-19	0	0%
20-29	5	0%
30-39	13	1%
40-49	29	2%
50-59	100	5%
60-69	262	14%
70-79	457	25%
80+	970	53%
Total	1,836	100%

**PRELIMINARY COVID-19 Cases by Date of Illness Onset
Ohio, 1/2/20 - 5/21/20***

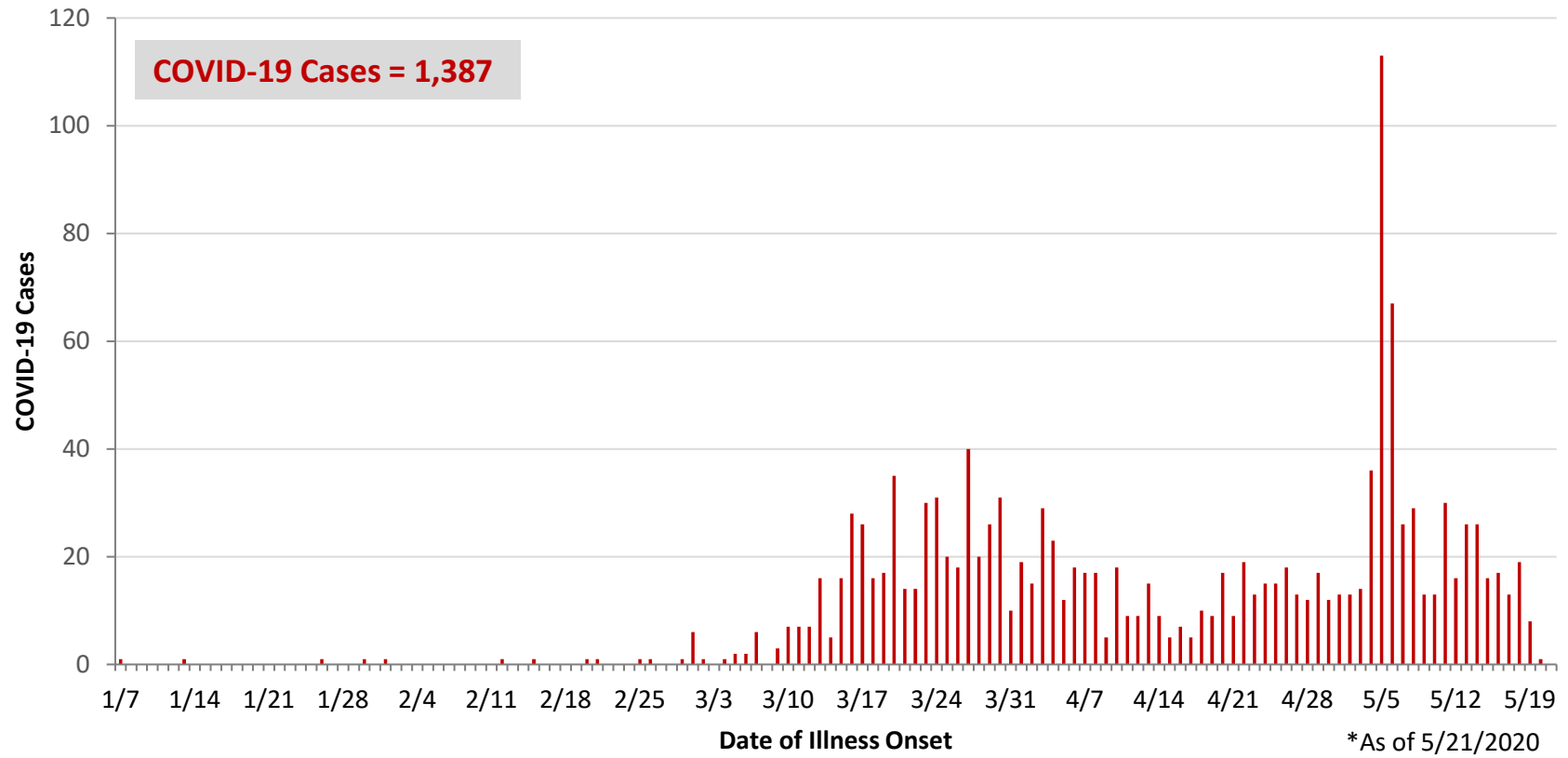


*As of 5/21/2020

WCO:

Preliminary COVID-19 Cases West Central Ohio, As of 5/21/2020		
County	# Cases	% Cases
Champaign	25	2%
Clark	178	13%
Darke	142	10%
Greene	86	6%
Miami	337	24%
Montgomery	554	40%
Preble	30	2%
Shelby	35	3%
Total	1,387	100%
Sex		
Sex	# Cases	% Cases
Female	754	54%
Male	565	41%
Unknown	68	5%
Total	1,387	100%
Age Group		
Age Group	# Cases	% Cases
0-19	66	5%
20-29	166	12%
30-39	195	14%
40-49	190	14%
50-59	253	18%
60-69	216	16%
70-79	133	10%
80+	168	12%
Total	1,387	100%
Hospitalized	283	20.4%
Deaths	73	5.3%
Age Group		
Age Group	Deaths	% of Deaths
0-19	0	0%
20-29	0	0%
30-39	2	3%
40-49	2	3%
50-59	5	7%
60-69	11	15%
70-79	12	16%
80+	41	56%
Total	73	100%

**PRELIMINARY COVID-19 Cases by Date of Illness Onset
West Central Ohio, 1/7/20 - 5/21/20***



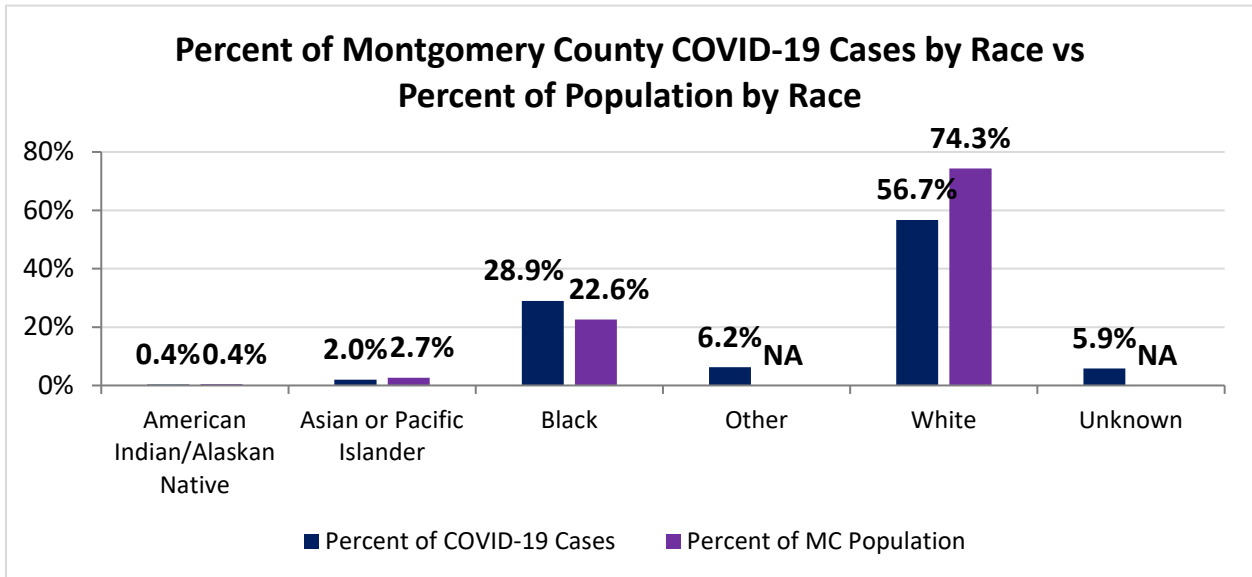
Montgomery County:

Preliminary COVID-19 Cases, Montgomery County, As of 5/21/2020		
Sex	# Cases	% Cases
Female	295	53%
Male	253	46%
Unknown	6	1%
Total	554	100%
Age Group		
Age Group	# Cases	% Cases
0-19	32	6%
20-29	62	11%
30-39	82	15%
40-49	90	16%
50-59	125	23%
60-69	99	18%
70-79	40	7%
80+	24	4%
Total	554	100%
Hospitalized		
Hospitalized	154	27.8%
Deaths		
Deaths	14	2.5%
Age Group		
Age Group	Deaths	% of Deaths
0-19	0	0%
20-29	0	0%
30-39	1	7%
40-49	2	14%
50-59	2	14%
60-69	3	21%
70-79	0	0%
80+	6	43%
Total	14	100%

Source: Ohio Disease Reporting System, ODH

Montgomery County COVID-19 Cases by Race As of 5/21/20			
Race	Count	Percent	Rate
American Indian/Alaskan Native (AI/AN)*	2	0.4%	93.1
Asian	11	2.0%	77.3
Black	163	28.9%	135.4
Other	35	6.2%	0.0
White	320	56.7%	80.9
Unknown	33	5.9%	0.0
Total	564	100%	105.9

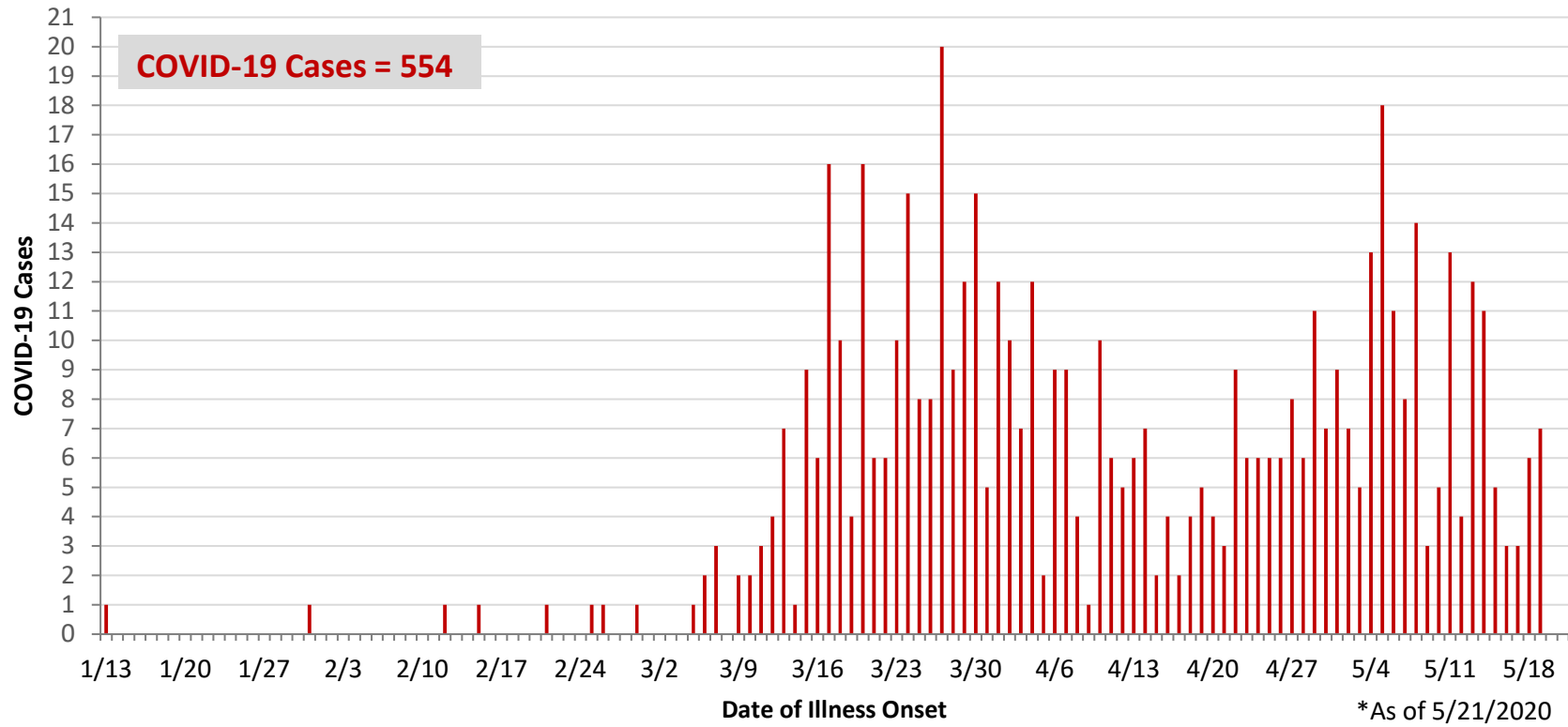
*Note. AI/ANs account for 0.4% of Montgomery County's population, and therefore, rates for this population will be large and may be misleading.



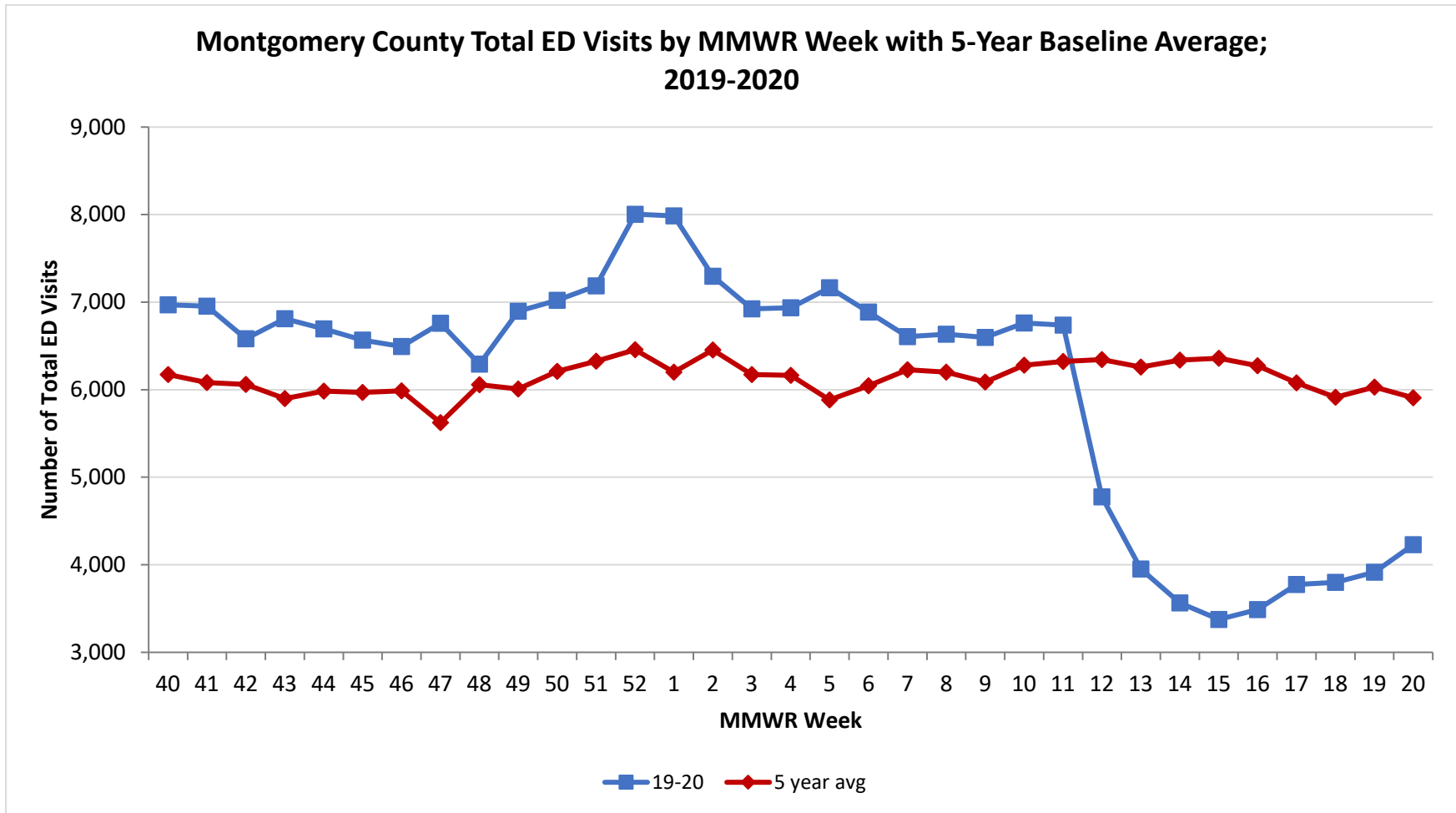
Montgomery County COVID-19 Cases by Health Care Worker Status As of 5/21/20		
Status	#	%
Health Care Worker	110	19.5%
Non-Health Care Worker	379	67.2%
Unknown	75	13.3%
Total	564	100%

Montgomery County COVID-19 Cases Age Range As of 5/21/20	
Stat	Age in Years
Age Range	1 - 95
Average Age	48.4
Median Age	50.0

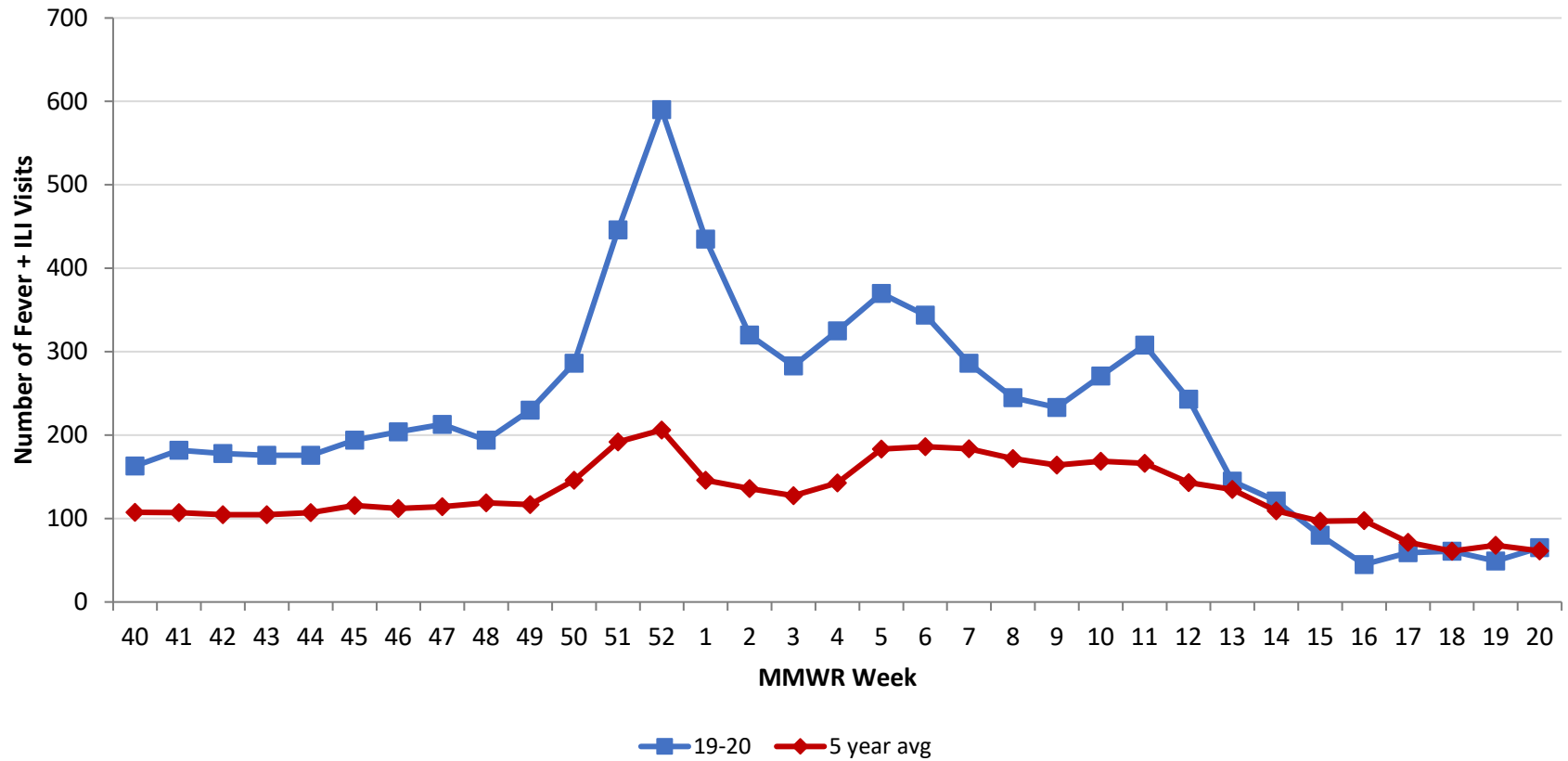
**PRELIMINARY COVID-19 Cases by Date of Illness Onset
Montgomery County, 1/13/20 - 5/21/20***



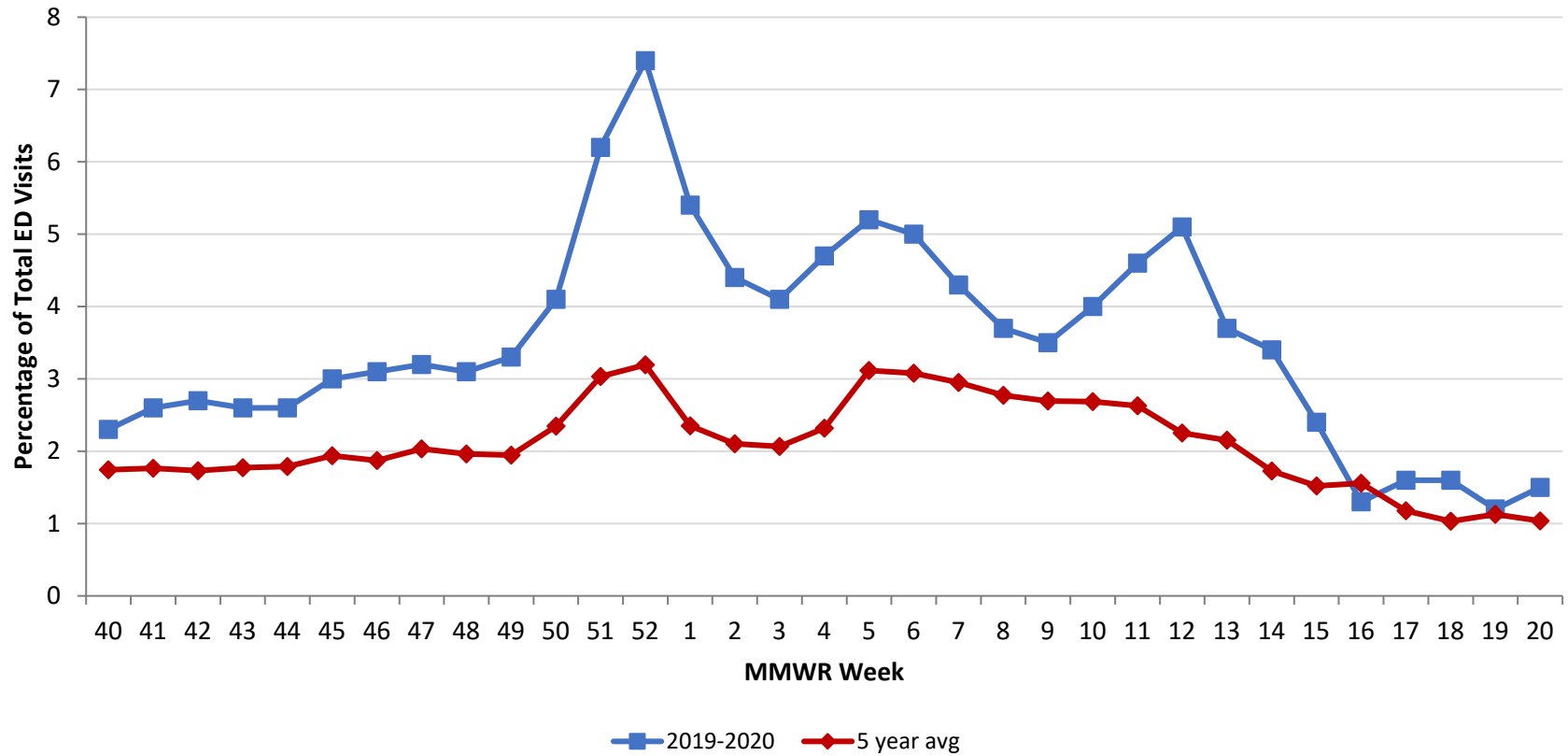
Source: EpiCenter Syndromic Surveillance, Health Monitoring Systems



Montgomery County Fever + ILI Specified ED Visits by MMWR Week with 5-Year Baseline Average; 2019-2020



Montgomery County Fever + ILI Specified ED Visits by MMWR Week with 5-Year Baseline Average; 2019-2020



# Total Visits		
MMWR Week	19-20	5-Year Average
40	6,970	6,173.4
41	6,955	6,082.8
42	6,581	6,061.6
43	6,810	5,899.6
44	6,694	5,982.4
45	6,567	5,968.0
46	6,494	5,987.6
47	6,760	5,622.8
48	6,292	6,056.8
49	6,895	6,008.0
50	7,022	6,209.8
51	7,185	6,324.4
52	8,005	6,456.0
1	7,986	6,200.8
2	7,297	6,452.4
3	6,924	6,172.9
4	6,935	6,164.0
5	7,164	5,881.8
6	6,888	6,045.0
7	6,605	6,226.8
8	6,633	6,200.6
9	6,597	6,088.2
10	6,763	6,279.6
11	6,738	6,321.6
12	4,775	6,345.0
13	3,592	6,259.8
14	3,565	6,337.4
15	3,376	6,359.8
16	3,489	6,274.0
17	3,774	6,079.8
18	3,798	5,913.4
19	3,915	6,029.6
20	4,231	5,908.8

# Fever + ILI Visits		
MMWR Week	19-20	5-Year Average
40	163	107.6
41	182	107.2
42	178	104.8
43	176	104.6
44	176	107.0
45	194	115.6
46	204	112.0
47	213	114.4
48	194	118.8
49	230	116.8
50	286	145.8
51	446	191.8
52	590	206.2
1	435	145.8
2	320	135.8
3	283	127.4
4	325	142.8
5	370	183.2
6	344	186.2
7	286	183.8
8	245	171.8
9	233	164.0
10	271	168.6
11	308	166.2
12	243	143.0
13	145	134.8
14	121	109.4
15	80	96.8
16	45	97.6
17	59	71.6
18	61	61.0
19	49	68.0
20	65	61.2

% Fever + ILI Visits		
MMWR Week	19-20	5-Year Average
40	2.3	1.7
41	2.6	1.8
42	2.7	1.7
43	2.6	1.8
44	2.6	1.8
45	3.0	1.9
46	3.1	1.9
47	3.2	2.0
48	3.1	2.0
49	3.3	1.9
50	4.1	2.3
51	6.2	3.0
52	7.4	3.2
1	5.4	2.4
2	4.4	2.1
3	4.1	2.1
4	4.7	2.3
5	5.2	3.1
6	5	3.1
7	4.3	3.0
8	3.7	2.8
9	3.5	2.7
10	4	2.7
11	4.6	2.6
12	5.1	2.3
13	3.7	2.2
14	3.4	1.7
15	2.4	1.5
16	1.3	1.6
17	1.6	1.2
18	1.6	1.0
19	1.2	1.1
20	1.5	1.0