



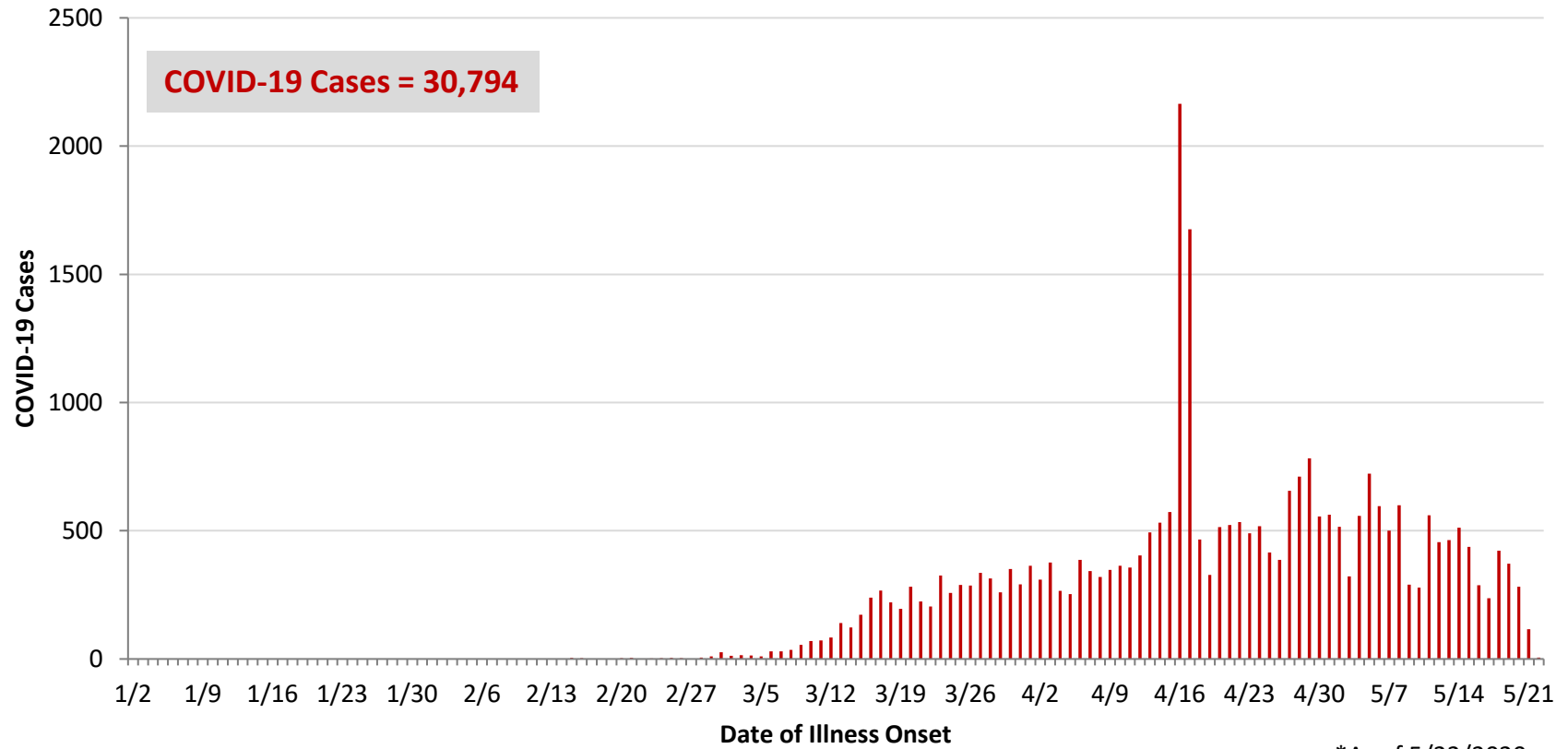
**Ohio, West Central Ohio (WCO), and Montgomery County COVID-19 Cases  
As of 5/22/20**

**Source:** The State of Ohio COVID-19 Dashboard, Ohio Department of Health

**Ohio:**

<b>Preliminary COVID-19 Cases Ohio, As of 5/22/2020</b>		
<b>Sex</b>	<b># Cases</b>	<b>% Cases</b>
Female	14,348	47%
Male	16,251	53%
Unknown	195	1%
<b>Total</b>	<b>30,794</b>	<b>100%</b>
<b>Age Group</b>		
<b>Age Group</b>	<b># Cases</b>	<b>% Cases</b>
0-19	1,215	4%
20-29	4,154	13%
30-39	4,955	16%
40-49	4,874	16%
50-59	5,174	17%
60-69	4,245	14%
70-79	2,784	9%
80+	3,371	11%
Unknown	22	0%
<b>Total</b>	<b>30,794</b>	<b>100%</b>
<b>Hospitalized</b>		
Hospitalized	5,379	17.5%
<b>Deaths</b>		
Deaths	1,872	6.1%
<b>Age Group</b>		
<b>Age Group</b>	<b>Deaths</b>	<b>% of Deaths</b>
0-19	0	0%
20-29	5	0%
30-39	12	1%
40-49	30	2%
50-59	105	6%
60-69	268	14%
70-79	465	25%
80+	987	53%
<b>Total</b>	<b>1,872</b>	<b>100%</b>

**PRELIMINARY COVID-19 Cases by Date of Illness Onset  
Ohio, 1/2/20 - 5/22/20\***

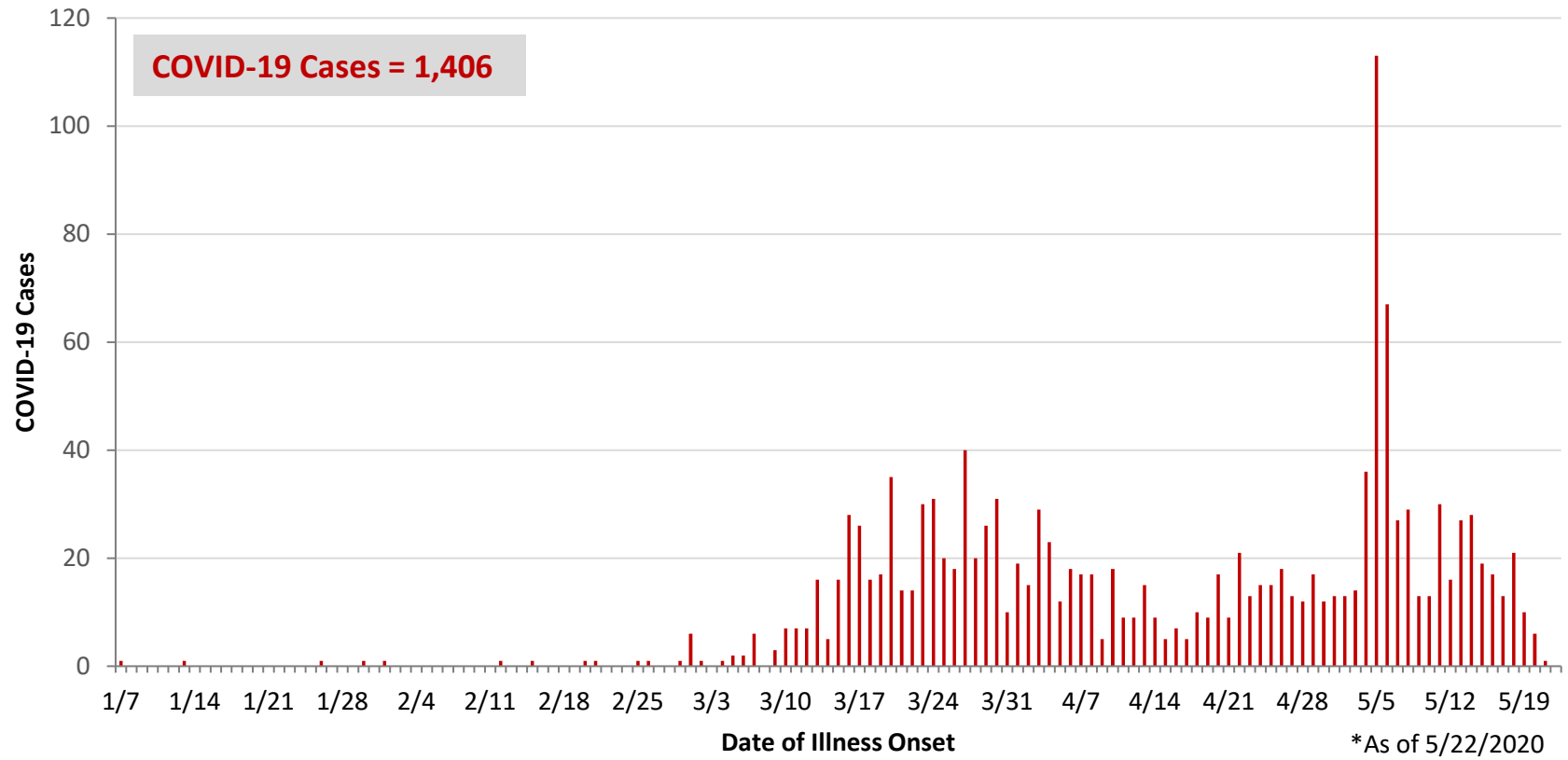


\*As of 5/22/2020

WCO:

Preliminary COVID-19 Cases West Central Ohio, As of 5/22/2020		
County	# Cases	% Cases
Champaign	26	2%
Clark	184	13%
Darke	146	10%
Greene	86	6%
Miami	337	24%
Montgomery	561	40%
Preble	30	2%
Shelby	36	3%
<b>Total</b>	<b>1,406</b>	<b>100%</b>
Sex		
Sex	# Cases	% Cases
Female	769	55%
Male	570	41%
Unknown	67	5%
<b>Total</b>	<b>1,406</b>	<b>100%</b>
Age Group		
Age Group	# Cases	% Cases
0-19	68	5%
20-29	171	12%
30-39	198	14%
40-49	196	14%
50-59	255	18%
60-69	217	15%
70-79	133	9%
80+	168	12%
<b>Total</b>	<b>1,406</b>	<b>100%</b>
Hospitalized	288	20.5%
Deaths	74	5.3%
Age Group		
Age Group	Deaths	% of Deaths
0-19	0	0%
20-29	0	0%
30-39	2	3%
40-49	2	3%
50-59	5	7%
60-69	11	15%
70-79	12	16%
80+	42	57%
<b>Total</b>	<b>74</b>	<b>100%</b>

**PRELIMINARY COVID-19 Cases by Date of Illness Onset  
West Central Ohio, 1/7/20 - 5/22/20\***



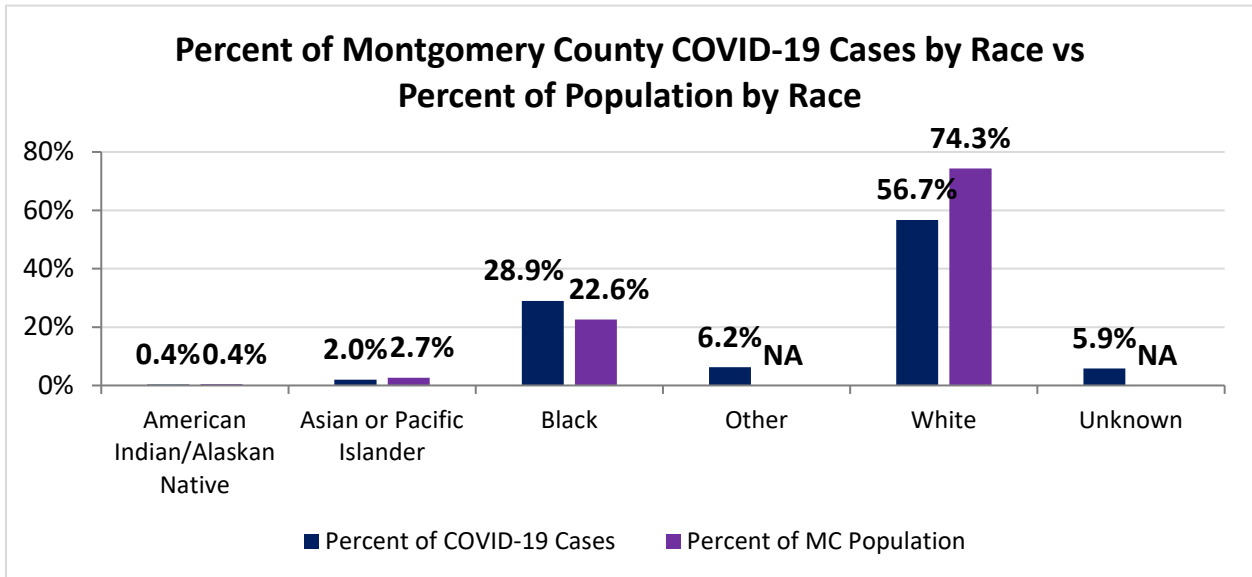
**Montgomery County:**

<b>Preliminary COVID-19 Cases, Montgomery County, As of 5/22/2020</b>		
<b>Sex</b>	<b># Cases</b>	<b>% Cases</b>
Female	300	53%
Male	255	45%
Unknown	6	1%
<b>Total</b>	<b>561</b>	<b>100%</b>
<b>Age Group</b>		
<b>Age Group</b>	<b># Cases</b>	<b>% Cases</b>
0-19	33	6%
20-29	62	11%
30-39	84	15%
40-49	92	16%
50-59	127	23%
60-69	99	18%
70-79	40	7%
80+	24	4%
<b>Total</b>	<b>561</b>	<b>100%</b>
<b>Hospitalized</b>		
Hospitalized	157	28.0%
<b>Deaths</b>		
Deaths	14	2.5%
<b>Age Group</b>		
<b>Age Group</b>	<b>Deaths</b>	<b>% of Deaths</b>
0-19	0	0%
20-29	0	0%
30-39	1	7%
40-49	2	14%
50-59	2	14%
60-69	3	21%
70-79	0	0%
80+	6	43%
<b>Total</b>	<b>14</b>	<b>100%</b>

Source: Ohio Disease Reporting System, ODH

<b>Montgomery County COVID-19 Cases by Race As of 5/21/20</b>			
<b>Race</b>	<b>Count</b>	<b>Percent</b>	<b>Rate</b>
American Indian/Alaskan Native (AI/AN)*	2	0.4%	93.1
Asian	11	2.0%	77.3
Black	163	28.9%	135.4
Other	35	6.2%	0.0
White	320	56.7%	80.9
Unknown	33	5.9%	0.0
<b>Total</b>	<b>564</b>	<b>100%</b>	<b>105.9</b>

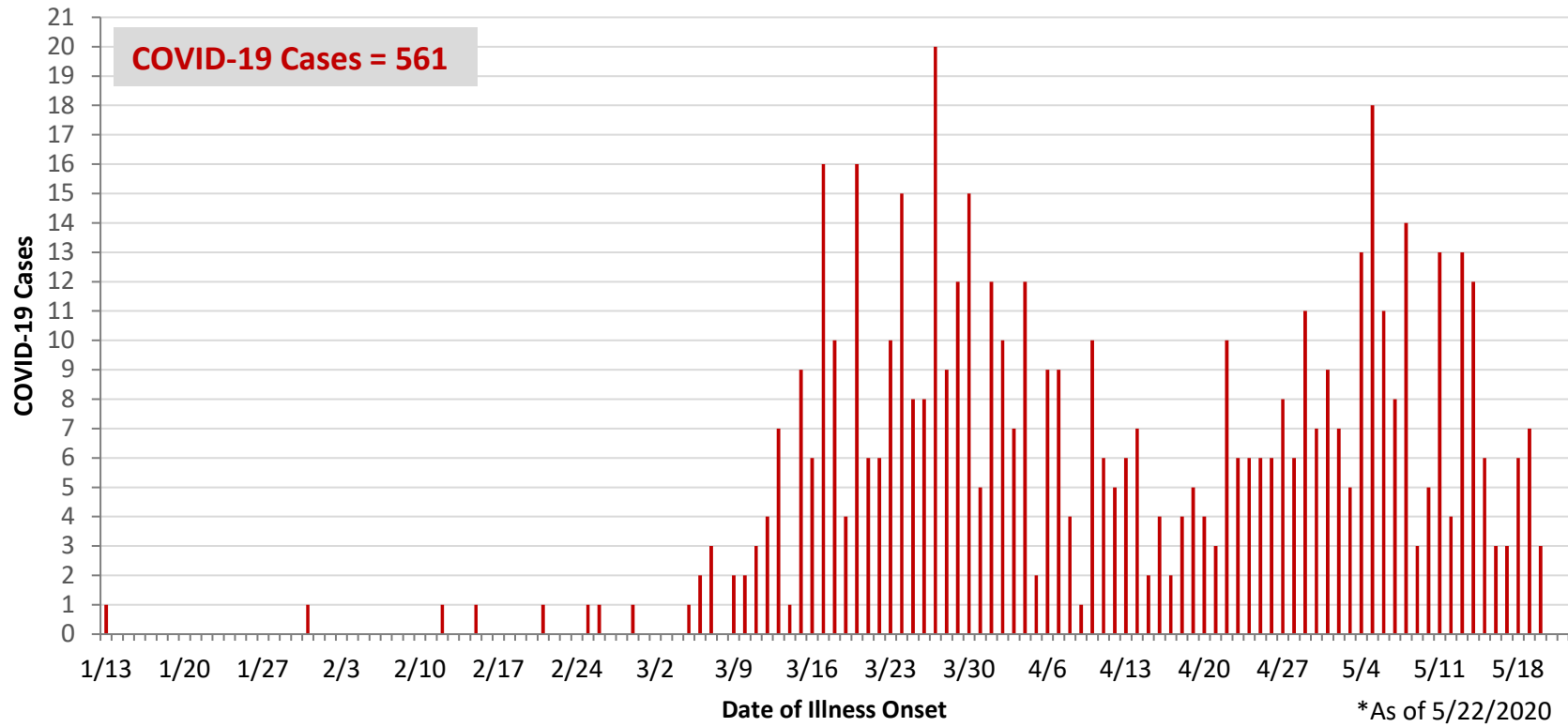
\*Note. AI/ANs account for 0.4% of Montgomery County's population, and therefore, rates for this population will be large and may be misleading.



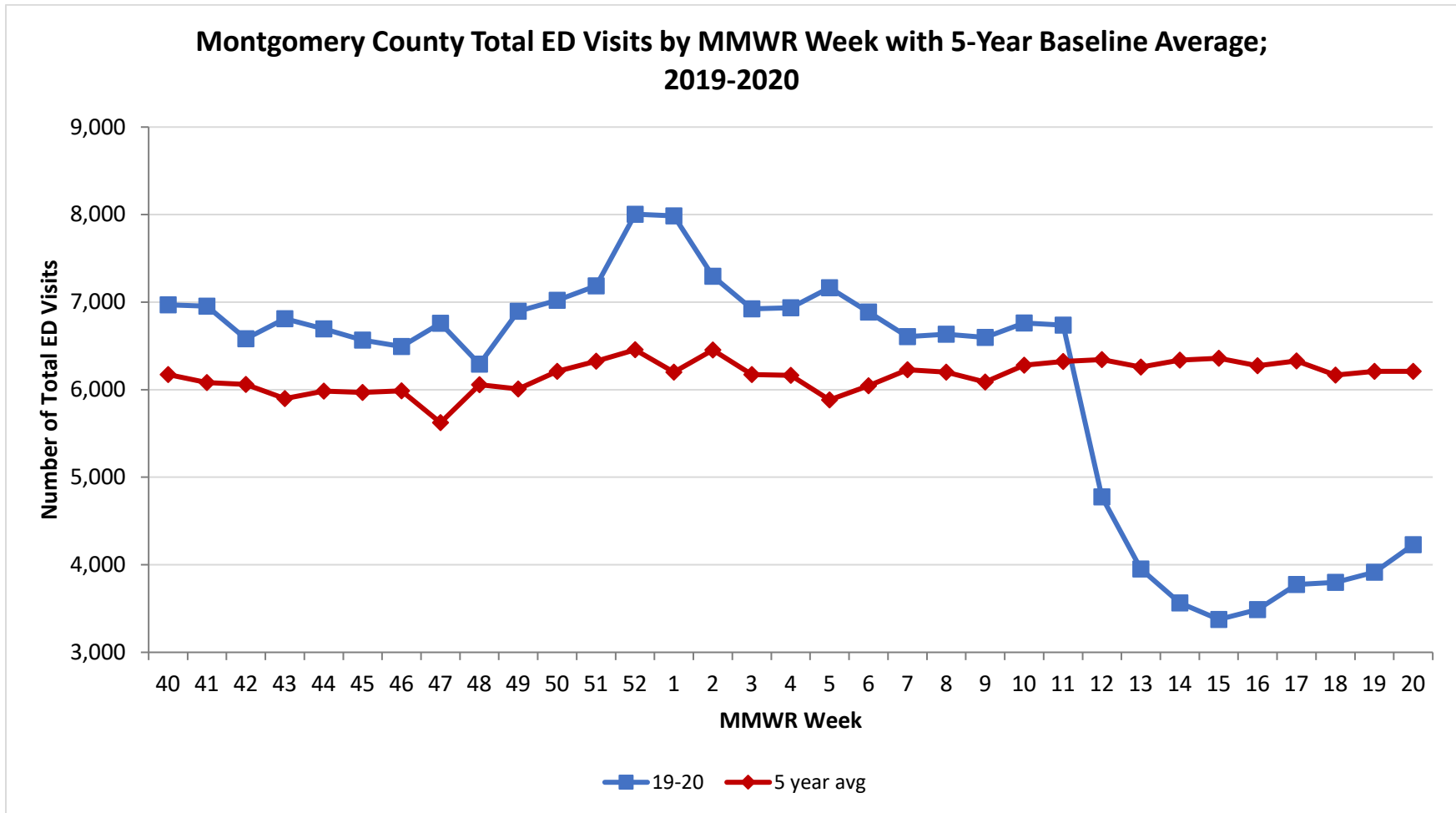
<b>Montgomery County COVID-19 Cases by Health Care Worker Status As of 5/21/20</b>		
<b>Status</b>	<b>#</b>	<b>%</b>
Health Care Worker	110	19.5%
Non-Health Care Worker	379	67.2%
Unknown	75	13.3%
<b>Total</b>	<b>564</b>	<b>100%</b>

<b>Montgomery County COVID-19 Cases Age Range As of 5/21/20</b>	
<b>Stat</b>	<b>Age in Years</b>
Age Range	1 - 95
Average Age	48.4
Median Age	50.0

**PRELIMINARY COVID-19 Cases by Date of Illness Onset  
Montgomery County, 1/13/20 - 5/22/20\***

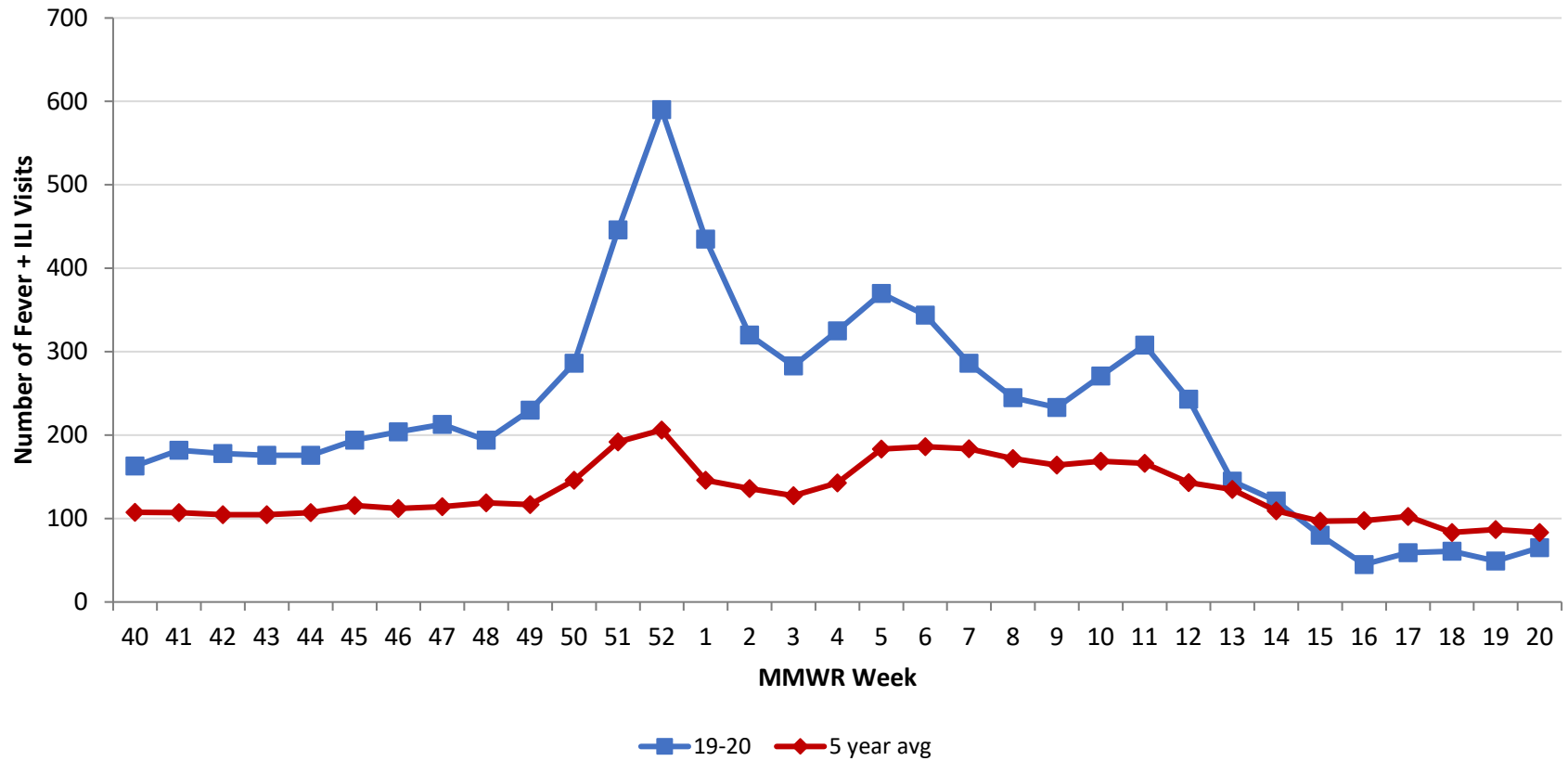


Source: EpiCenter Syndromic Surveillance, Health Monitoring Systems

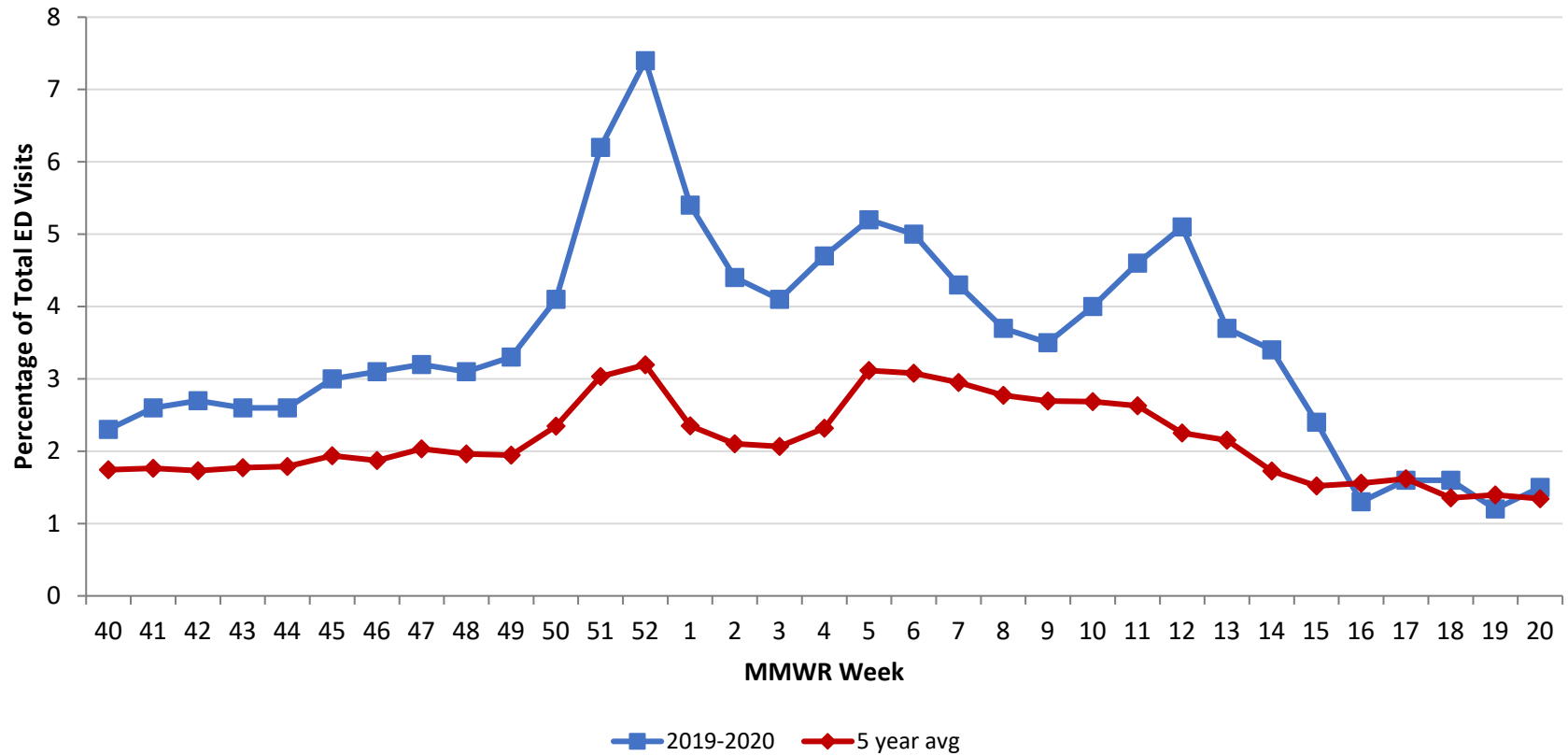




**Montgomery County Fever + ILI Specified ED Visits by MMWR Week with 5-Year Baseline Average; 2019-2020**



Montgomery County Fever + ILI Specified ED Visits by MMWR Week with 5-Year Baseline Average; 2019-2020



# Total Visits		
MMWR Week	19-20	5-Year Average
40	6,970	6173.4
41	6,955	6082.8
42	6,581	6061.6
43	6,810	5899.6
44	6,694	5982.4
45	6,567	5968.0
46	6,494	5987.6
47	6,760	5622.8
48	6,292	6056.8
49	6,895	6008.0
50	7,022	6209.8
51	7,185	6324.4
52	8,005	6456.0
1	7,986	6200.8
2	7,297	6452.4
3	6,924	6172.9
4	6,935	6164.0
5	7,164	5881.8
6	6,888	6045.0
7	6,605	6226.8
8	6,633	6200.6
9	6,597	6088.2
10	6,763	6279.6
11	6,738	6321.6
12	4,775	6345.0
13	3,952	6259.8
14	3,565	6337.4
15	3,376	6360.6
16	3,489	6273.4
17	3,774	6327.8
18	3,798	6165.8
19	3,915	6209.8
20	4,231	6208.4

# Fever + ILI Visits		
MMWR Week	19-20	5-Year Average
40	163	107.6
41	182	107.2
42	178	104.8
43	176	104.6
44	176	107.0
45	194	115.6
46	204	112.0
47	213	114.4
48	194	118.8
49	230	116.8
50	286	145.8
51	446	191.8
52	590	206.2
1	435	145.8
2	320	135.8
3	283	127.4
4	325	142.8
5	370	183.2
6	344	186.2
7	286	183.8
8	245	171.8
9	233	164.0
10	271	168.6
11	308	166.2
12	243	143.0
13	145	134.8
14	121	109.4
15	80	96.8
16	45	97.6
17	59	102.4
18	61	83.4
19	49	86.8
20	65	83.4

% Fever + ILI Visits		
MMWR Week	19-20	5-Year Average
40	2.3	1.7
41	2.6	1.8
42	2.7	1.7
43	2.6	1.8
44	2.6	1.8
45	3.0	1.9
46	3.1	1.9
47	3.2	2.0
48	3.1	2.0
49	3.3	1.9
50	4.1	2.3
51	6.2	3.0
52	7.4	3.2
1	5.4	2.4
2	4.4	2.1
3	4.1	2.1
4	4.7	2.3
5	5.2	3.1
6	5	3.1
7	4.3	3.0
8	3.7	2.8
9	3.5	2.7
10	4	2.7
11	4.6	2.6
12	5.1	2.3
13	3.7	2.2
14	3.4	1.7
15	2.4	1.5
16	1.3	1.6
17	1.6	1.6
18	1.6	1.4
19	1.2	1.4
20	1.5	1.3

