



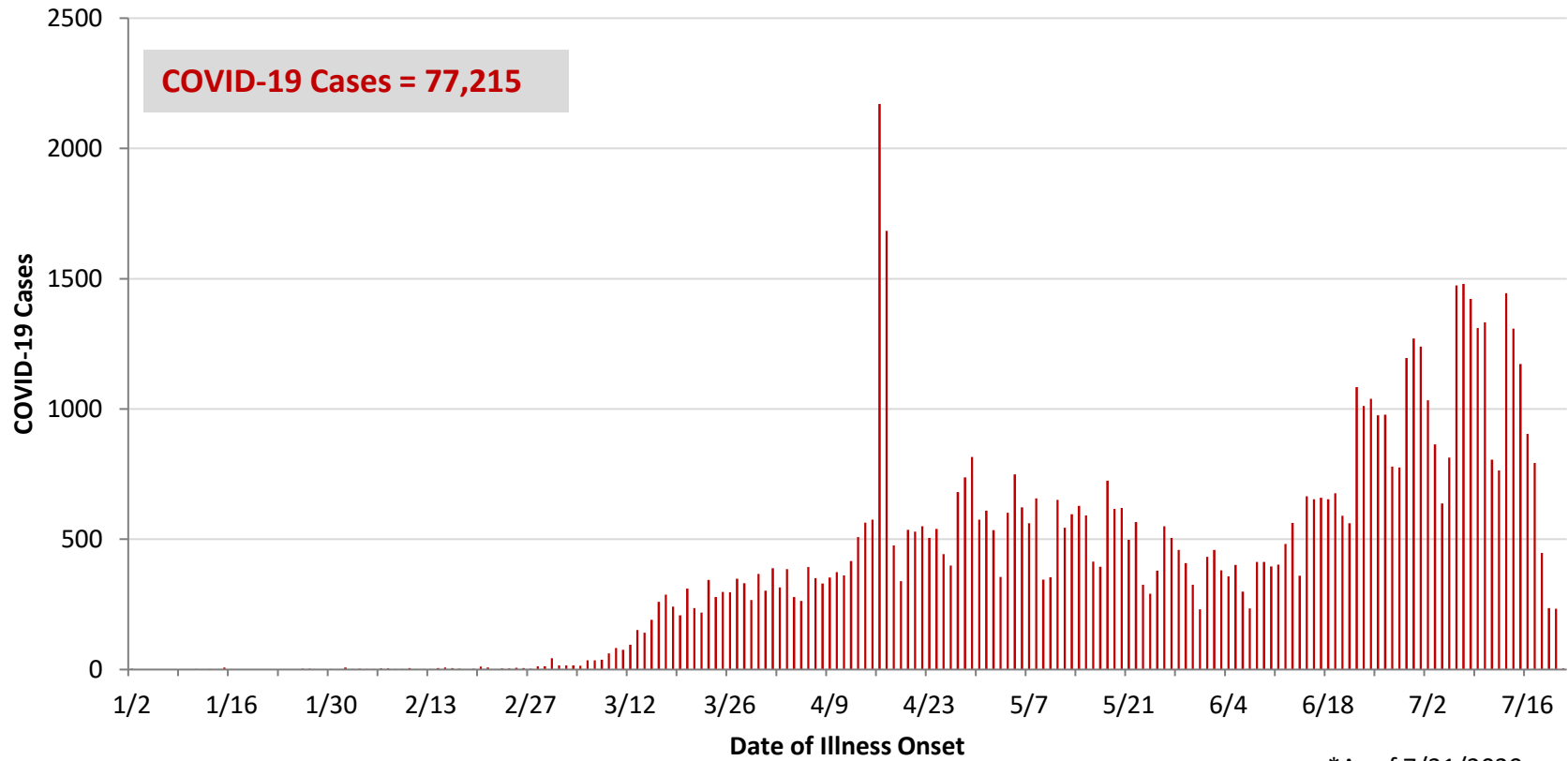
**Ohio, West Central Ohio (WCO), and Montgomery County COVID-19 Cases  
As of 7/21/20**

**Source:** The State of Ohio COVID-19 Dashboard, Ohio Department of Health

**Ohio:**

<b>Preliminary COVID-19 Cases Ohio, As of 7/21/2020</b>		
<b>Sex</b>	<b># Cases</b>	<b>% Cases</b>
Female	39,084	51%
Male	37,441	48%
Unknown	690	1%
<b>Total</b>	<b>77,215</b>	<b>100%</b>
<b>Age Group</b>		
<b>Age Group</b>	<b># Cases</b>	<b>% Cases</b>
0-19	6,416	8%
20-29	15,588	20%
30-39	12,960	17%
40-49	11,206	15%
50-59	11,362	15%
60-69	8,553	11%
70-79	5,425	7%
80+	5,631	7%
Unknown	74	0%
<b>Total</b>	<b>77,215</b>	<b>100%</b>
<b>Hospitalized</b>		
Hospitalized	9,736	12.6%
<b>Deaths</b>		
Deaths	3,219	4.2%
<b>Age Group</b>		
<b>Age Group</b>	<b>Deaths</b>	<b>% of Deaths</b>
0-19	2	0%
20-29	12	0%
30-39	24	1%
40-49	54	2%
50-59	207	6%
60-69	452	14%
70-79	794	25%
80+	1,674	52%
<b>Total</b>	<b>3,219</b>	<b>100%</b>

**PRELIMINARY COVID-19 Cases by Date of Illness Onset  
Ohio, 1/2/20 - 7/21/20\***

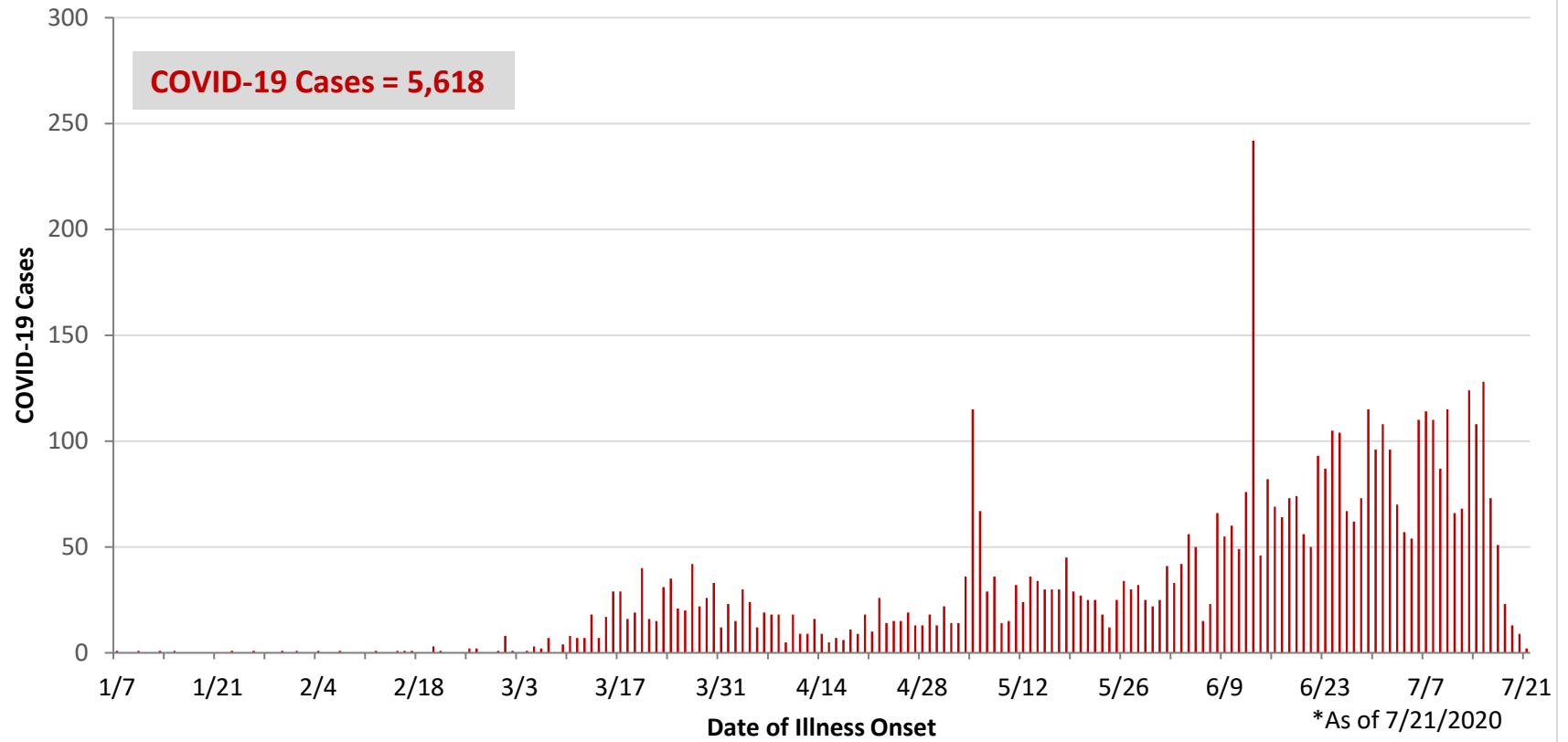


\*As of 7/21/2020

WCO:

Preliminary COVID-19 Cases West Central Ohio, As of 7/21/2020		
County	# Cases	% Cases
Champaign	71	1%
Clark	924	16%
Darke	266	5%
Greene	485	9%
Miami	588	10%
Montgomery	3,083	55%
Preble	110	2%
Shelby	91	2%
<b>Total</b>	<b>5,618</b>	<b>100%</b>
Sex		
Sex	# Cases	% Cases
Female	3,035	54%
Male	2,457	44%
Unknown	126	2%
<b>Total</b>	<b>5,618</b>	<b>100%</b>
Age Group		
Age Group	# Cases	% Cases
0-19	586	10%
20-29	1116	20%
30-39	966	17%
40-49	753	13%
50-59	786	14%
60-69	649	12%
70-79	396	7%
80+	366	7%
<b>Total</b>	<b>5,618</b>	<b>100%</b>
Hospitalized	723	12.9%
Deaths	134	2.4%
Age Group		
Age Group	Deaths	% of Deaths
0-19	0	0%
20-29	2	1%
30-39	2	1%
40-49	2	1%
50-59	10	7%
60-69	21	16%
70-79	22	16%
80+	75	56%
<b>Total</b>	<b>134</b>	<b>100%</b>

**PRELIMINARY COVID-19 Cases by Date of Illness Onset  
West Central Ohio, 1/7/20 - 7/21/20\***



**Montgomery County:**

<b>Preliminary COVID-19 Cases Montgomery County, As of 7/21/2020</b>		
<b>Sex</b>	<b># Cases</b>	<b>% Cases</b>
Female	1,708	55%
Male	1,343	44%
Unknown	32	1%
<b>Total</b>	<b>3,083</b>	<b>100%</b>
<b>Age Group</b>		
<b>Age Group</b>	<b># Cases</b>	<b>% Cases</b>
0-19	363	12%
20-29	588	19%
30-39	555	18%
40-49	433	14%
50-59	435	14%
60-69	343	11%
70-79	213	7%
80+	153	5%
<b>Total</b>	<b>3,083</b>	<b>100%</b>
<b>Hospitalized</b>		
Hospitalized	459	14.9%
<b>Deaths</b>		
Deaths	49	1.6%
<b>Age Group</b>	<b>Deaths</b>	<b>% of Deaths</b>
0-19	0	0%
20-29	2	4%
30-39	1	2%
40-49	2	4%
50-59	6	12%
60-69	12	24%
70-79	7	14%
80+	19	39%
<b>Total</b>	<b>49</b>	<b>100%</b>

<b>Age Group</b>	<b>Hospitalizations</b>	<b>% of Age Group Cases</b>
0-19	19	5.2%
20-29	26	4.4%
30-39	41	7.4%
40-49	54	12.5%
50-59	80	18.4%
60-69	101	29.4%
70-79	85	39.9%
80+	53	34.6%
<b>Total</b>	<b>459</b>	<b>14.9%</b>

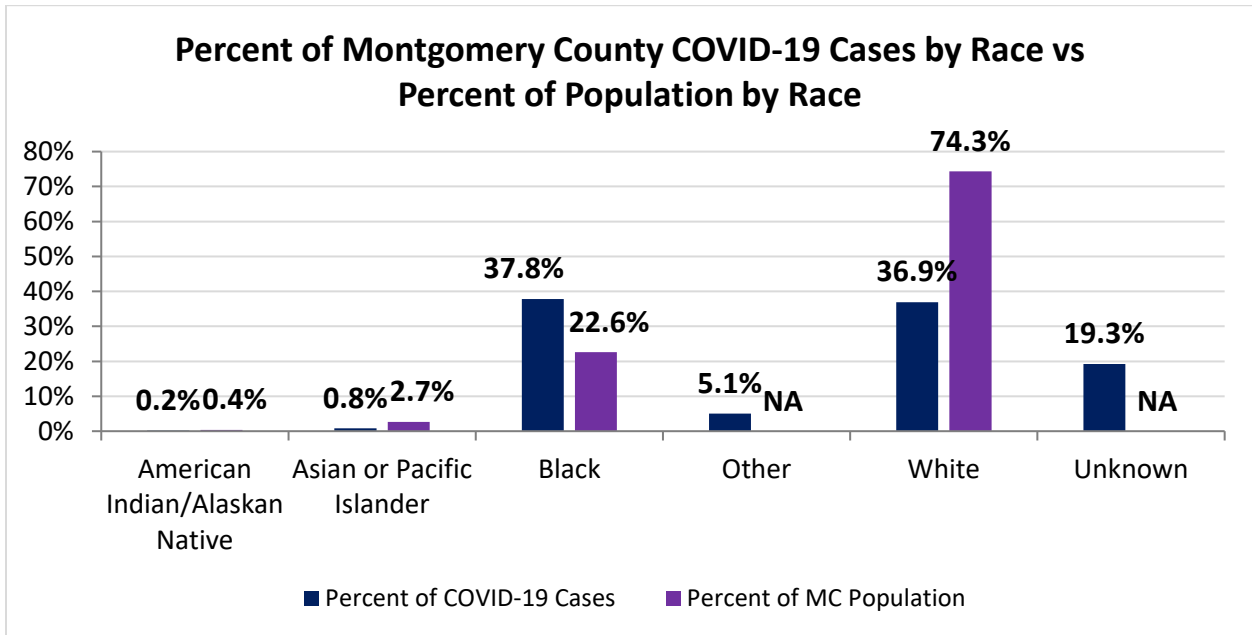
Source: Ohio Disease Reporting System, ODH

Montgomery County COVID-19 Cases by Race As of 7/20/20				
Race	Count	Percent	Rate	Rate Interpretation**
American Indian/Alaskan Native (AI/AN)*	5	0.2%	232.8	1 in 430
Asian	24	0.8%	168.7	1 in 593
Black	1,128	37.8%	937.2	1 in 107
Other	151	5.1%	NA	NA
White	1,103	36.9%	278.8	1 in 359
Unknown	575	19.3%	NA	NA
<b>Total</b>	<b>2,986</b>	<b>100%</b>	<b>560.9</b>	<b>1 in 178</b>

\*Note. AI/ANs account for 0.4% of Montgomery County’s population, and therefore, rates for this population will be large and may be misleading.

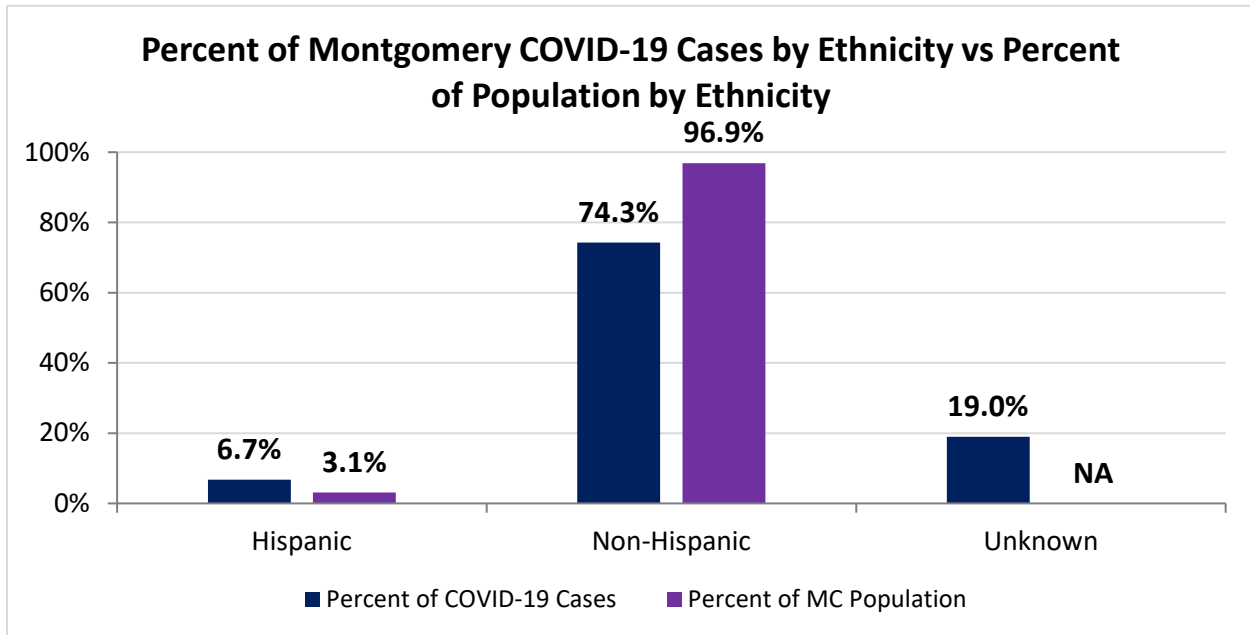
\*\*Rate interpretation represents the number of cases for the given population.

Example - there is a total of 1 case for every 178 Montgomery County residents.



<b>Montgomery County COVID-19 Cases by Ethnicity As of 7/20/20</b>				
<b>Ethnicity</b>	<b>Count</b>	<b>Percent</b>	<b>Rate</b>	<b>Rate Interpretation**</b>
Hispanic	167	6.7%	1,014.6	1 in 99
Non-Hispanic	2,177	74.3%	422.0	1 in 237
Unknown	642	19.0%	NA	NA
<b>Total</b>	<b>2,986</b>	<b>100%</b>	<b>560.9</b>	<b>1 in 178</b>

\*\*Rate interpretation represents the number of cases for the given population.  
 Example - there is a total of 1 case for every 178 Montgomery County residents.



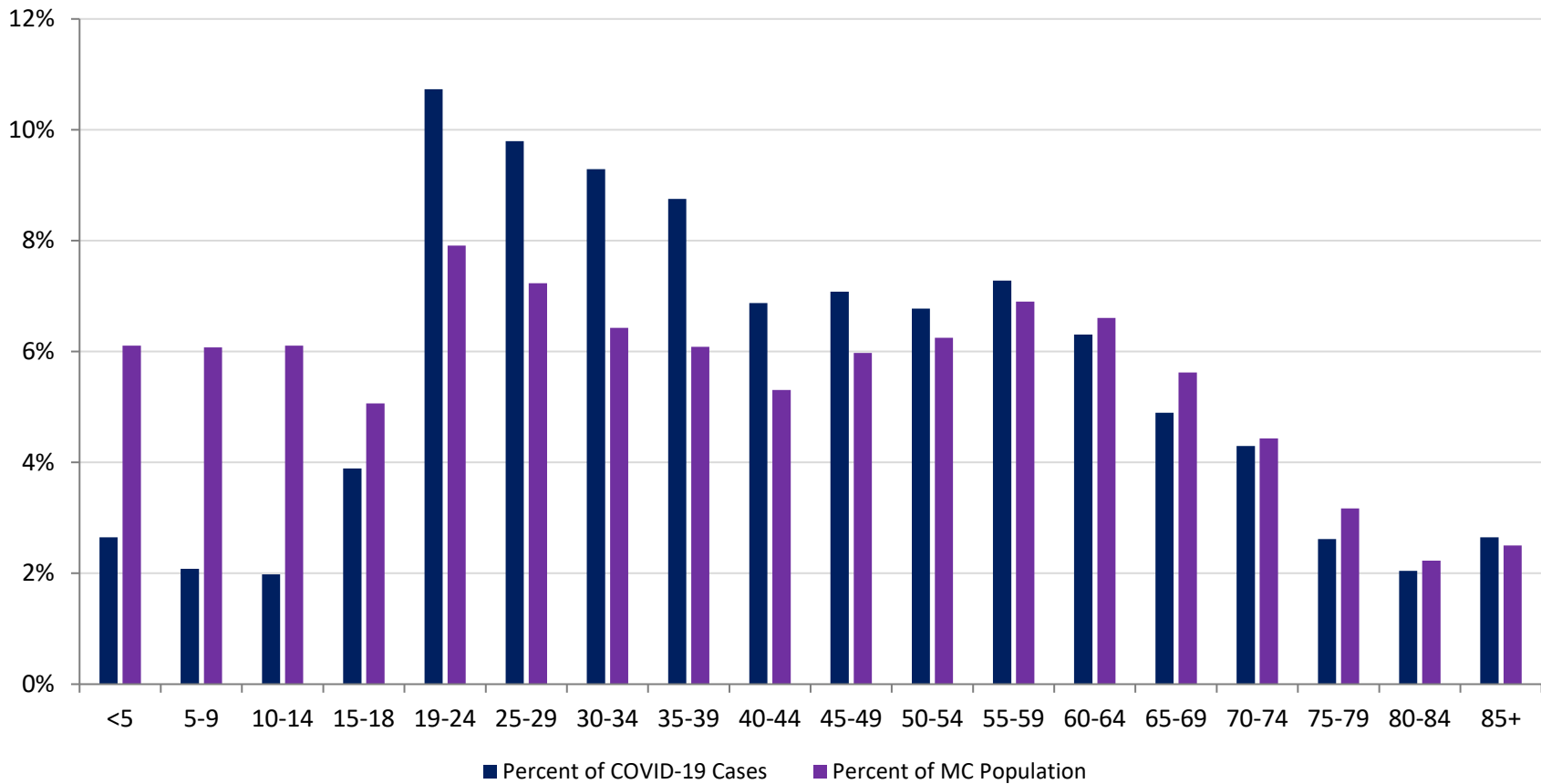
<b>Montgomery County COVID-19 Cases by Health Care Worker Status As of 7/20/20</b>		
<b>Status</b>	<b>#</b>	<b>%</b>
Health Care Worker	338	13.2%
Non-Health Care Worker	1,669	60.5%
Unknown	979	26.3%
<b>Total</b>	<b>2,986</b>	<b>100%</b>

<b>Montgomery County COVID-19 Cases Age Range As of 7/20/20</b>	
<b>Stat</b>	<b>Age in Years</b>
Age Range	<1 - 104
Average Age	42.4
Median Age	40.0

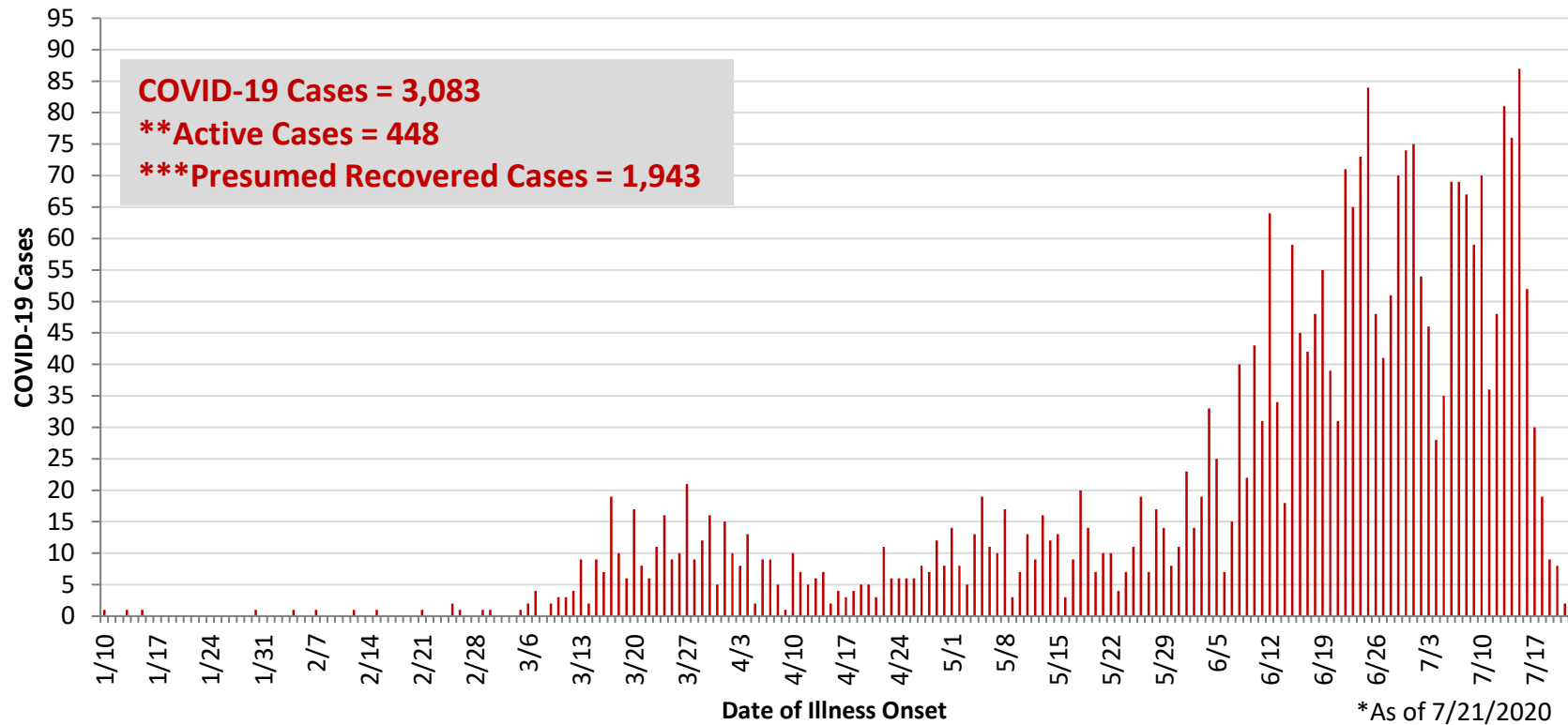
<b>Montgomery County COVID-19 Cases by Age Group As of 7/20/20</b>				
<b>Age Group</b>	<b># Cases</b>	<b>Rate</b>	<b>Percent of COVID-19 Cases</b>	<b>Percent of MC Population</b>
<5	79	242.9	2.7%	6.1%
5-9	62	191.8	2.1%	6.1%
10-14	59	181.5	2.0%	6.1%
15-18	116	430.3	3.9%	5.1%
19-24	320	759.6	10.7%	7.9%
25-29	292	758.6	9.8%	7.2%
30-34	277	809.7	9.3%	6.4%
35-39	261	805.3	8.8%	6.1%
40-44	205	725.6	6.9%	5.3%
45-49	211	663.5	7.1%	6.0%
50-54	202	607.5	6.8%	6.2%
55-59	217	590.8	7.3%	6.9%
60-64	188	534.6	6.3%	6.6%
65-69	146	487.9	4.9%	5.6%
70-74	128	542.1	4.3%	4.4%
75-79	78	462.2	2.6%	3.2%
80-84	61	514.5	2.0%	2.2%
85+	79	593.3	2.7%	2.5%
<b>Total</b>	<b>2,981</b>	<b>560.0</b>	<b>100%</b>	<b>100%</b>



**Percent of Montgomery County COVID-19 Cases by Age Group vs Percent of Population by Age Group**



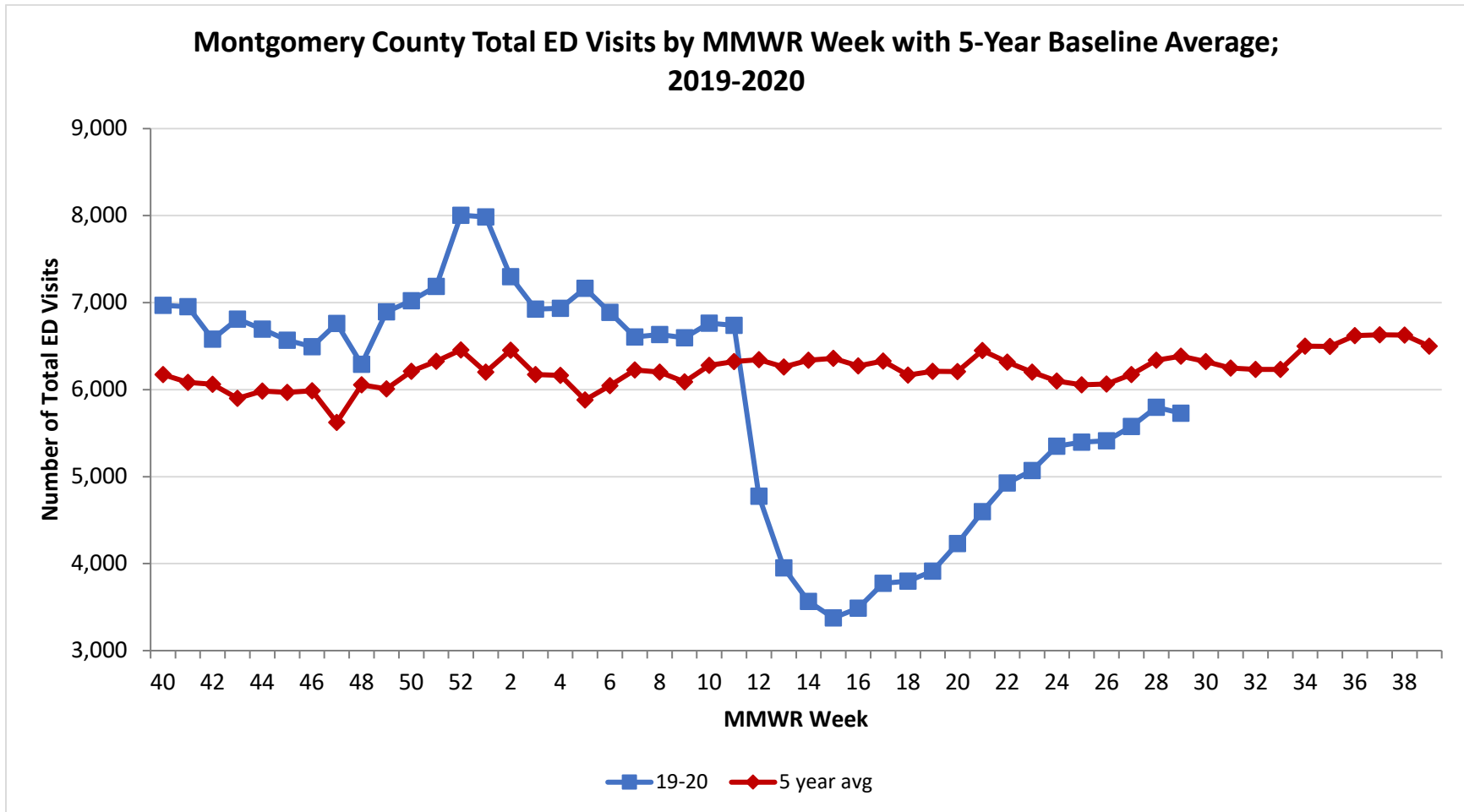
**PRELIMINARY COVID-19 Cases by Date of Illness Onset  
Montgomery County, 1/10/20 - 7/21/20\***



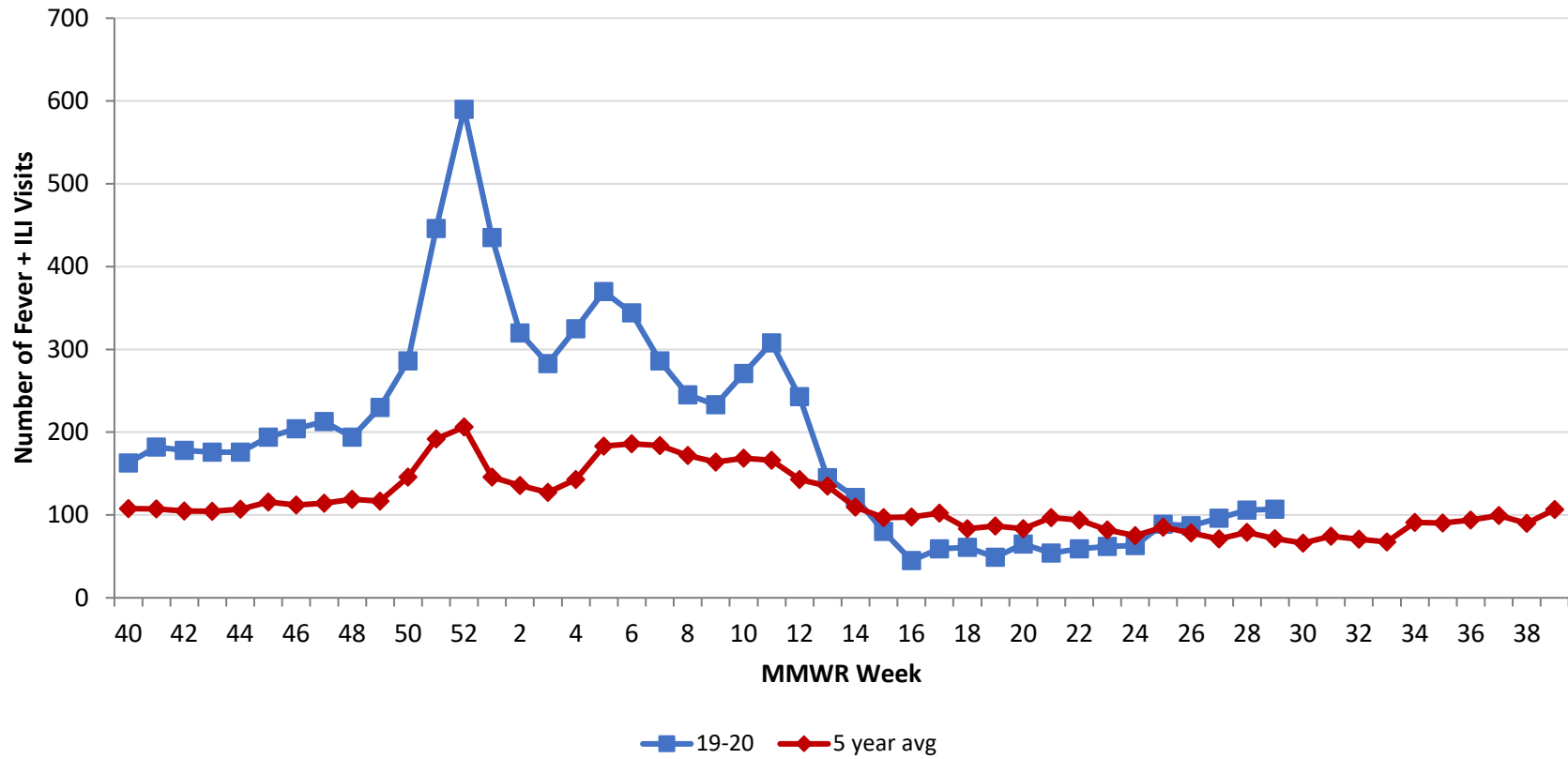
\*\*Active cases are based on the reported illness onset date (using a 10-day window).

\*\*\*Presumed recovered is defined as cases with a symptom onset date >21 days prior who are not deceased.

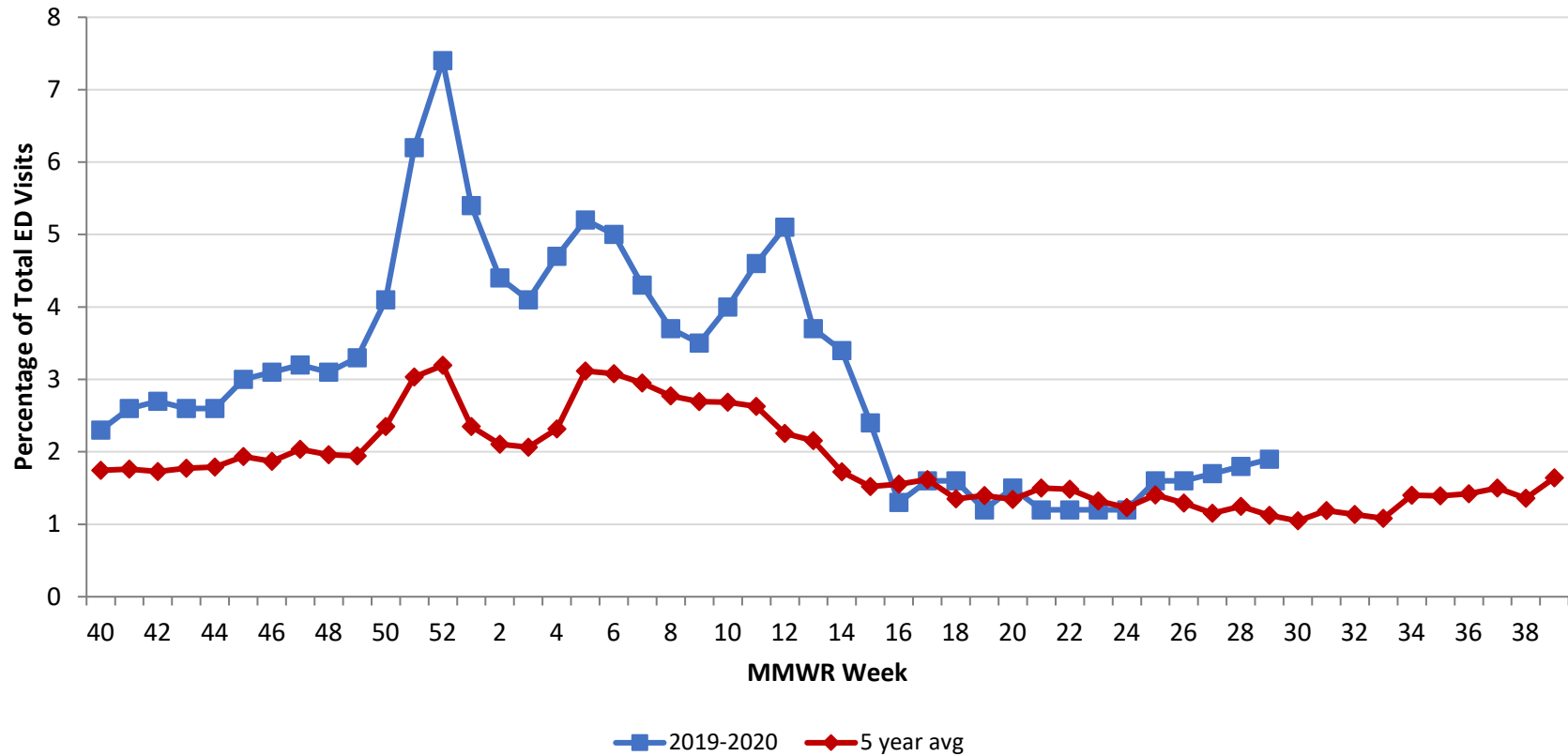
Source: EpiCenter Syndromic Surveillance, Health Monitoring Systems



Montgomery County Fever + ILI Specified ED Visits by MMWR Week with 5-Year Baseline Average; 2019-2020



**Montgomery County Fever + ILI Specified ED Visits (% of Total Visits) by MMWR Week  
with 5-Year Baseline Average; 2019-2020**



# Total Visits		
MMWR Week	19-20	5-Year Average
46	6,494	5987.6
47	6,760	5622.8
48	6,292	6056.8
49	6,895	6008.0
50	7,022	6209.8
51	7,185	6324.4
52	8,005	6456.0
1	7,986	6200.8
2	7,297	6452.4
3	6,924	6172.9
4	6,935	6164.0
5	7,164	5881.8
6	6,888	6045.0
7	6,605	6226.8
8	6,633	6200.6
9	6,597	6088.2
10	6,763	6279.6
11	6,738	6321.6
12	4,775	6345.0
13	3,952	6259.8
14	3,565	6337.4
15	3,376	6360.6
16	3,489	6273.4
17	3,774	6327.8
18	3,798	6165.8
19	3,915	6209.8
20	4,231	6208.4
21	4,598	6,449.6
22	4,928	6,315.4
23	5,070	6,201.0
24	5,350	6,098.4
25	5,398	6,055.8
26	5,412	6,063.2
27	5,577	6,173.0
28	5,797	6,339.0
29	5,728	6384.6

# Fever + ILI Visits		
MMWR Week	19-20	5-Year Average
46	204	112.0
47	213	114.4
48	194	118.8
49	230	116.8
50	286	145.8
51	446	191.8
52	590	206.2
1	435	145.8
2	320	135.8
3	283	127.4
4	325	142.8
5	370	183.2
6	344	186.2
7	286	183.8
8	245	171.8
9	233	164.0
10	271	168.6
11	308	166.2
12	243	143.0
13	145	134.8
14	121	109.4
15	80	96.8
16	45	97.6
17	59	102.4
18	61	83.4
19	49	86.8
20	65	83.4
21	54	96.8
22	59	93.8
23	62	82.0
24	63	75.0
25	89	85.2
26	87	78.4
27	96	71.2
28	106	79.2
29	107	71.6

% Fever + ILI Visits		
MMWR Week	19-20	5-Year Average
46	3.1	1.9
47	3.2	2.0
48	3.1	2.0
49	3.3	1.9
50	4.1	2.3
51	6.2	3.0
52	7.4	3.2
1	5.4	2.4
2	4.4	2.1
3	4.1	2.1
4	4.7	2.3
5	5.2	3.1
6	5	3.1
7	4.3	3.0
8	3.7	2.8
9	3.5	2.7
10	4	2.7
11	4.6	2.6
12	5.1	2.3
13	3.7	2.2
14	3.4	1.7
15	2.4	1.5
16	1.3	1.6
17	1.6	1.6
18	1.6	1.4
19	1.2	1.4
20	1.5	1.3
21	1.2	1.5
22	1.2	1.5
23	1.2	1.3
24	1.2	1.2
25	1.6	1.4
26	1.6	1.3
27	1.7	1.2
28	1.8	1.2
29	1.9	1.1