



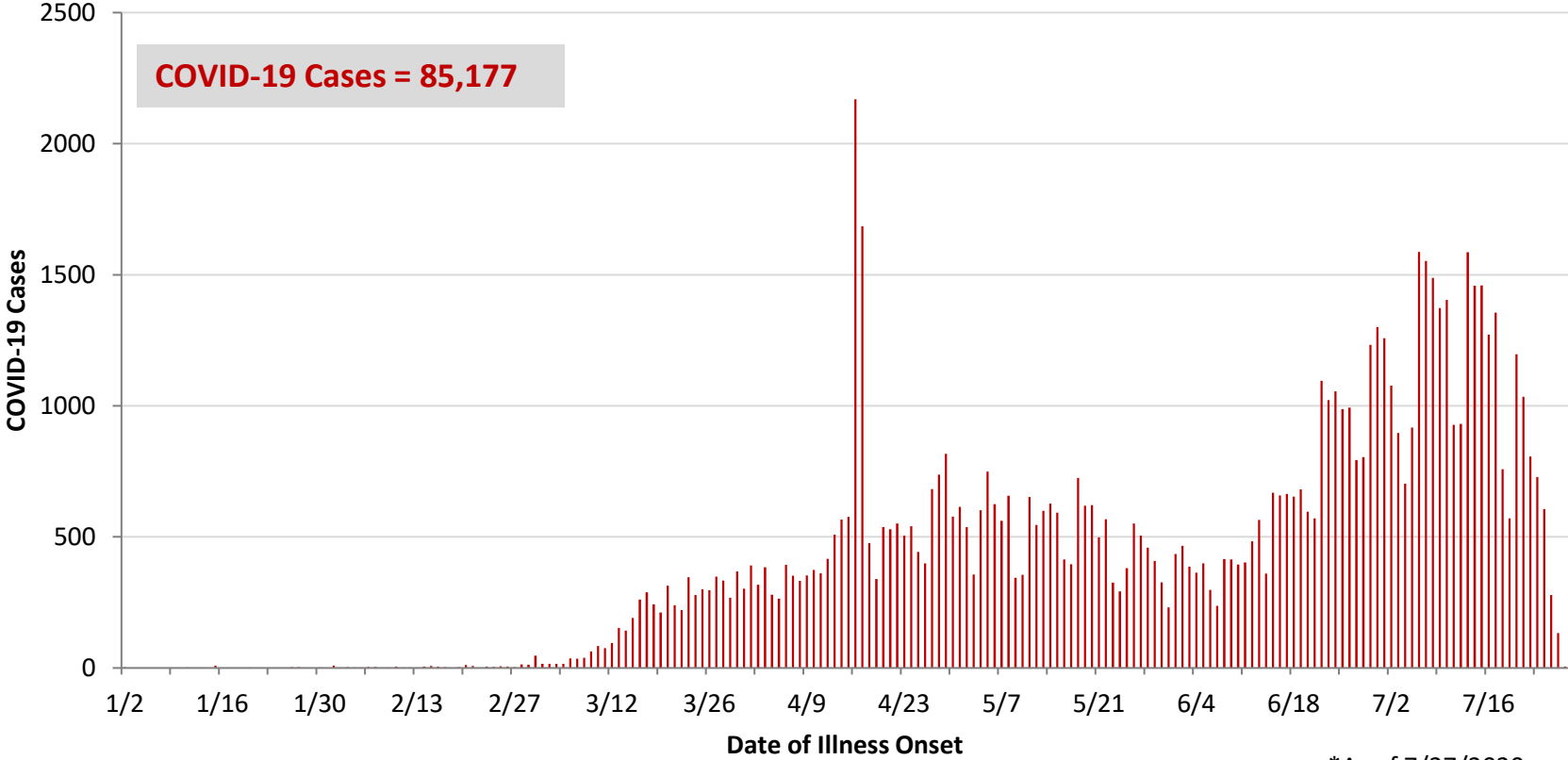
**Ohio, West Central Ohio (WCO), and Montgomery County COVID-19 Cases
As of 7/27/20**

Source: The State of Ohio COVID-19 Dashboard, Ohio Department of Health

Ohio:

Preliminary COVID-19 Cases Ohio, As of 7/27/2020		
Sex	# Cases	% Cases
Female	43,427	51%
Male	40,989	48%
Unknown	761	1%
Total	85,177	100%
Age Group		
Age Group	# Cases	% Cases
0-19	7,263	9%
20-29	17,312	20%
30-39	14,258	17%
40-49	12,344	14%
50-59	12,580	15%
60-69	9,407	11%
70-79	5,936	7%
80+	5,981	7%
Unknown	96	0%
Total	85,177	100%
Hospitalized		
Hospitalized	10,285	12.1%
Deaths		
Deaths	3,344	3.9%
Age Group		
Age Group	Deaths	% of Deaths
0-19	2	0%
20-29	11	0%
30-39	24	1%
40-49	58	2%
50-59	215	6%
60-69	476	14%
70-79	826	25%
80+	1,732	52%
Total	3,344	100%

**PRELIMINARY COVID-19 Cases by Date of Illness Onset
Ohio, 1/2/20 - 7/27/20***

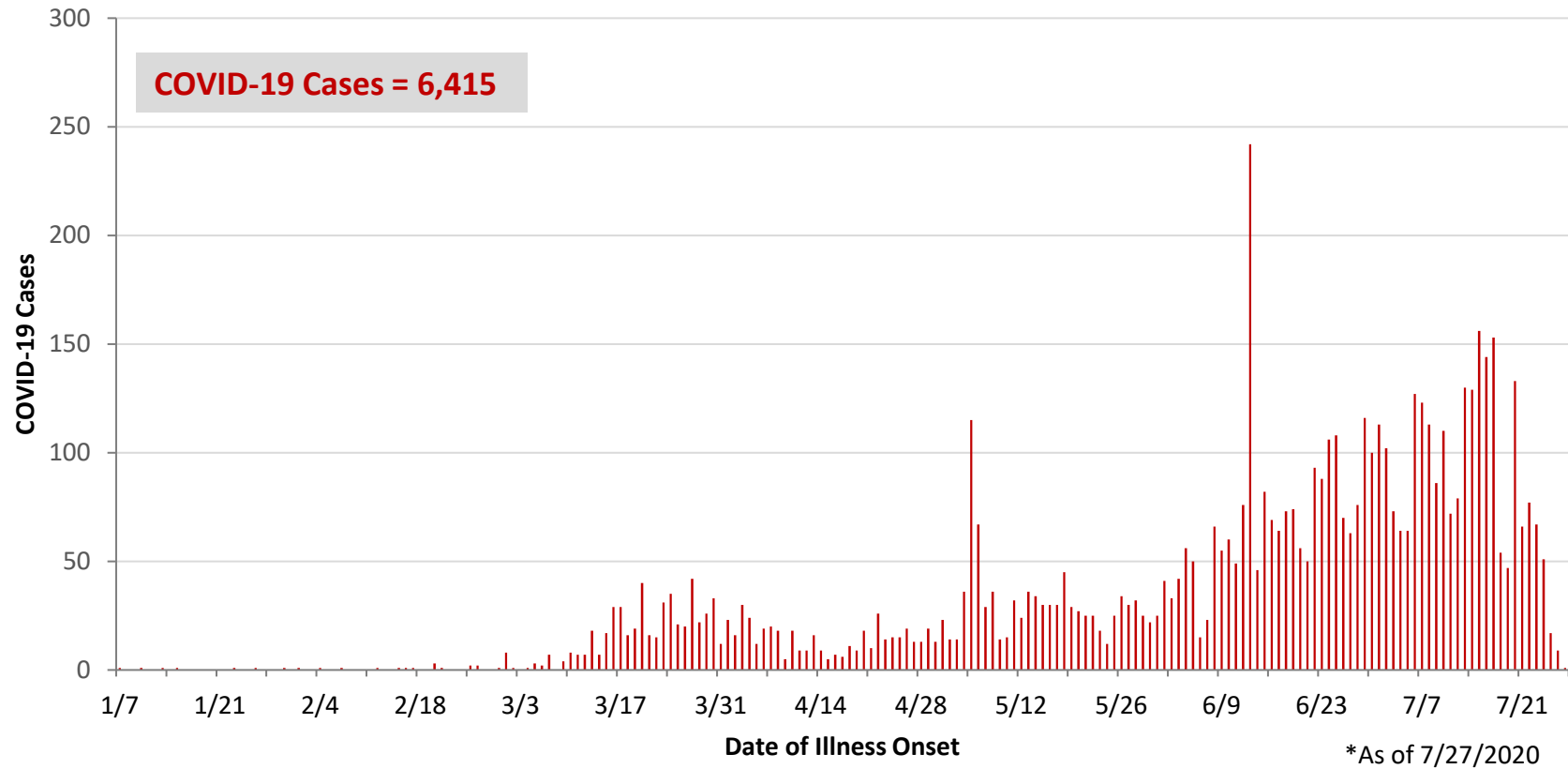


*As of 7/27/2020

WCO:

Preliminary COVID-19 Cases West Central Ohio, As of 7/27/2020		
County	# Cases	% Cases
Champaign	85	1%
Clark	1,002	16%
Darke	279	4%
Greene	554	9%
Miami	681	11%
Montgomery	3,567	56%
Preble	126	2%
Shelby	121	2%
Total	6,415	100%
Sex		
Sex	# Cases	% Cases
Female	3,478	54%
Male	2,790	43%
Unknown	147	2%
Total	6,415	100%
Age Group		
Age Group	# Cases	% Cases
0-19	680	11%
20-29	1,262	20%
30-39	1,099	17%
40-49	871	14%
50-59	906	14%
60-69	730	11%
70-79	449	7%
80+	418	7%
Total	6,415	100%
Hospitalized	814	12.7%
Deaths	145	2.3%
Age Group		
Age Group	Deaths	% of Deaths
0-19	0	0%
20-29	2	1%
30-39	3	2%
40-49	2	1%
50-59	11	8%
60-69	23	16%
70-79	24	17%
80+	80	55%
Total	145	100%

**PRELIMINARY COVID-19 Cases by Date of Illness Onset
West Central Ohio, 1/7/20 - 7/27/20***



Montgomery County:

Preliminary COVID-19 Cases Montgomery County, As of 7/27/2020		
Sex	# Cases	% Cases
Female	1,971	55%
Male	1,547	43%
Unknown	49	1%
Total	3,567	100%
Age Group		
Age Group	# Cases	% Cases
0-19	418	12%
20-29	684	19%
30-39	628	18%
40-49	508	14%
50-59	501	14%
60-69	395	11%
70-79	244	7%
80+	179	5%
Unknown	10	0%
Total	3,567	100%
Hospitalized		
Hospitalized	521	14.6%
Deaths		
Deaths	55	1.5%
Age Group		
Age Group	Deaths	% of Deaths
0-19	0	0%
20-29	2	4%
30-39	2	4%
40-49	2	4%
50-59	7	13%
60-69	12	22%
70-79	8	15%
80+	22	40%
Total	55	100%

Age Group	Hospitalizations	% of Age Group Cases
0-19	24	5.7%
20-29	25	3.7%
30-39	45	7.2%
40-49	58	11.4%
50-59	100	20.0%
60-69	114	28.9%
70-79	96	39.3%
80+	59	33.0%
Total	521	14.6%

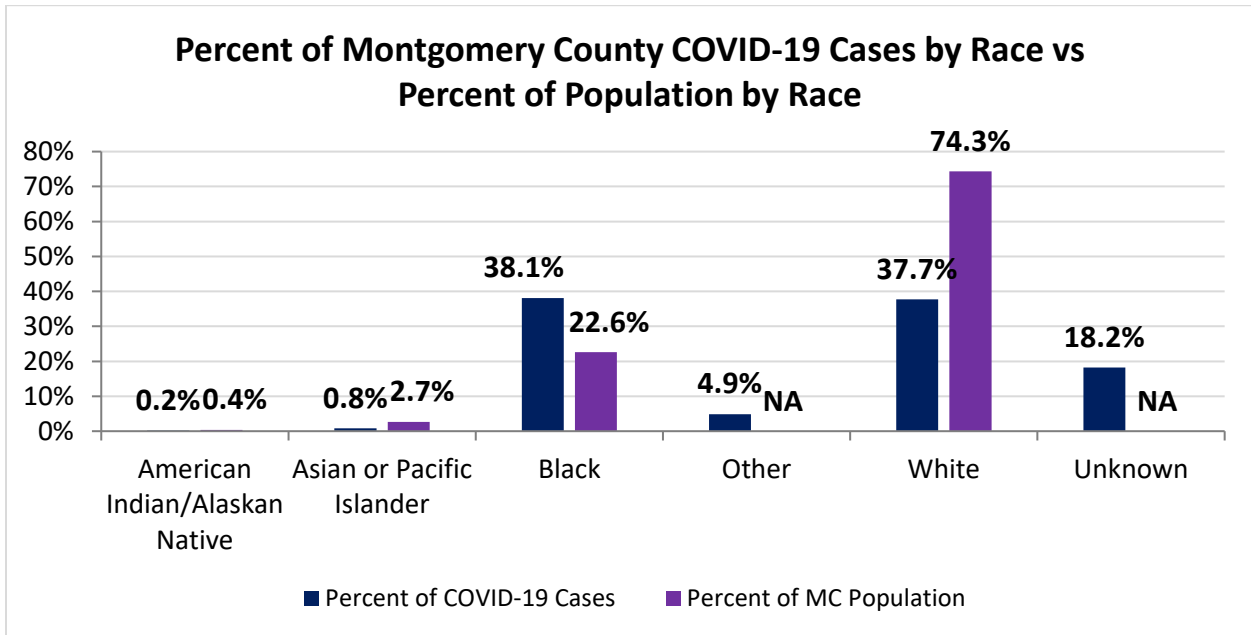
Source: Ohio Disease Reporting System, ODH

Montgomery County COVID-19 Cases by Race As of 7/23/20				
Race	Count	Percent	Rate	Rate Interpretation**
American Indian/Alaskan Native (AI/AN)*	7	0.2%	325.9	1 in 307
Asian	27	0.8%	189.8	1 in 527
Black	1,242	38.1%	1,031.9	1 in 97
Other	159	4.9%	NA	NA
White	1,229	37.7%	310.7	1 in 322
Unknown	594	18.2%	NA	NA
Total	3,258	100%	612.0	1 in 163

*Note. AI/ANs account for 0.4% of Montgomery County’s population, and therefore, rates for this population will be large and may be misleading.

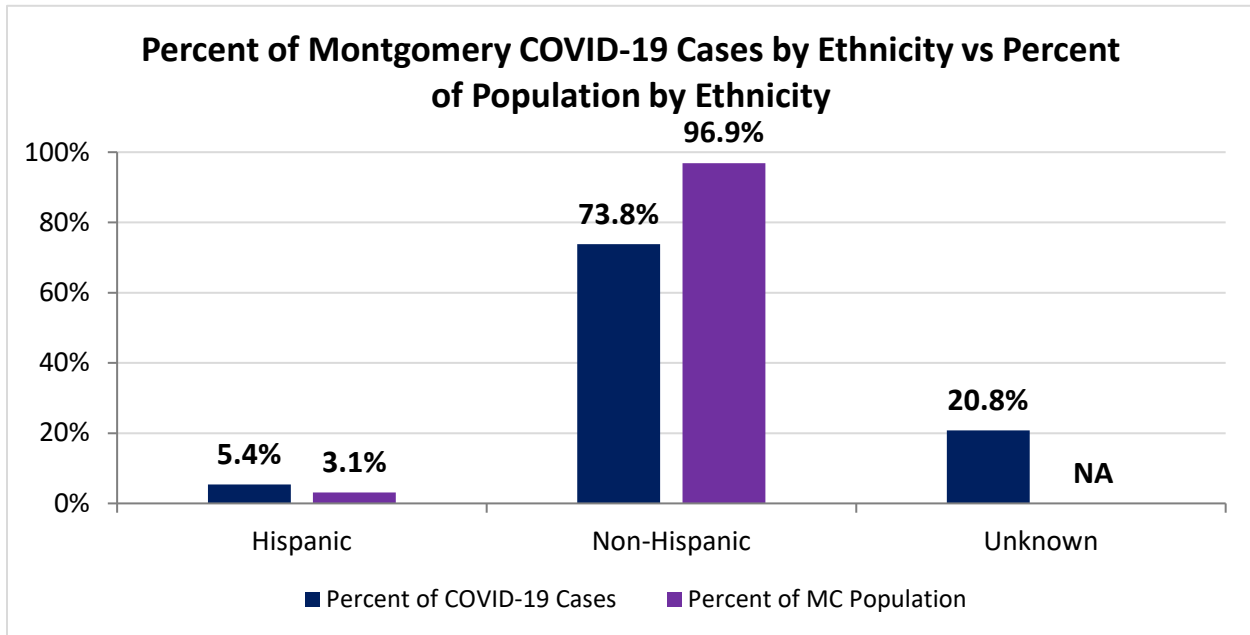
**Rate interpretation represents the number of cases for the given population.

Example - there is a total of 1 case for every 163 Montgomery County residents.



Montgomery County COVID-19 Cases by Ethnicity As of 7/23/20				
Ethnicity	Count	Percent	Rate	Rate Interpretation**
Hispanic	177	5.4%	1,075.3	1 in 93
Non-Hispanic	2,404	73.8%	466.0	1 in 215
Unknown	677	20.8%	NA	NA
Total	3,258	100%	612.0	1 in 163

**Rate interpretation represents the number of cases for the given population.
 Example - there is a total of 1 case for every 163 Montgomery County residents.

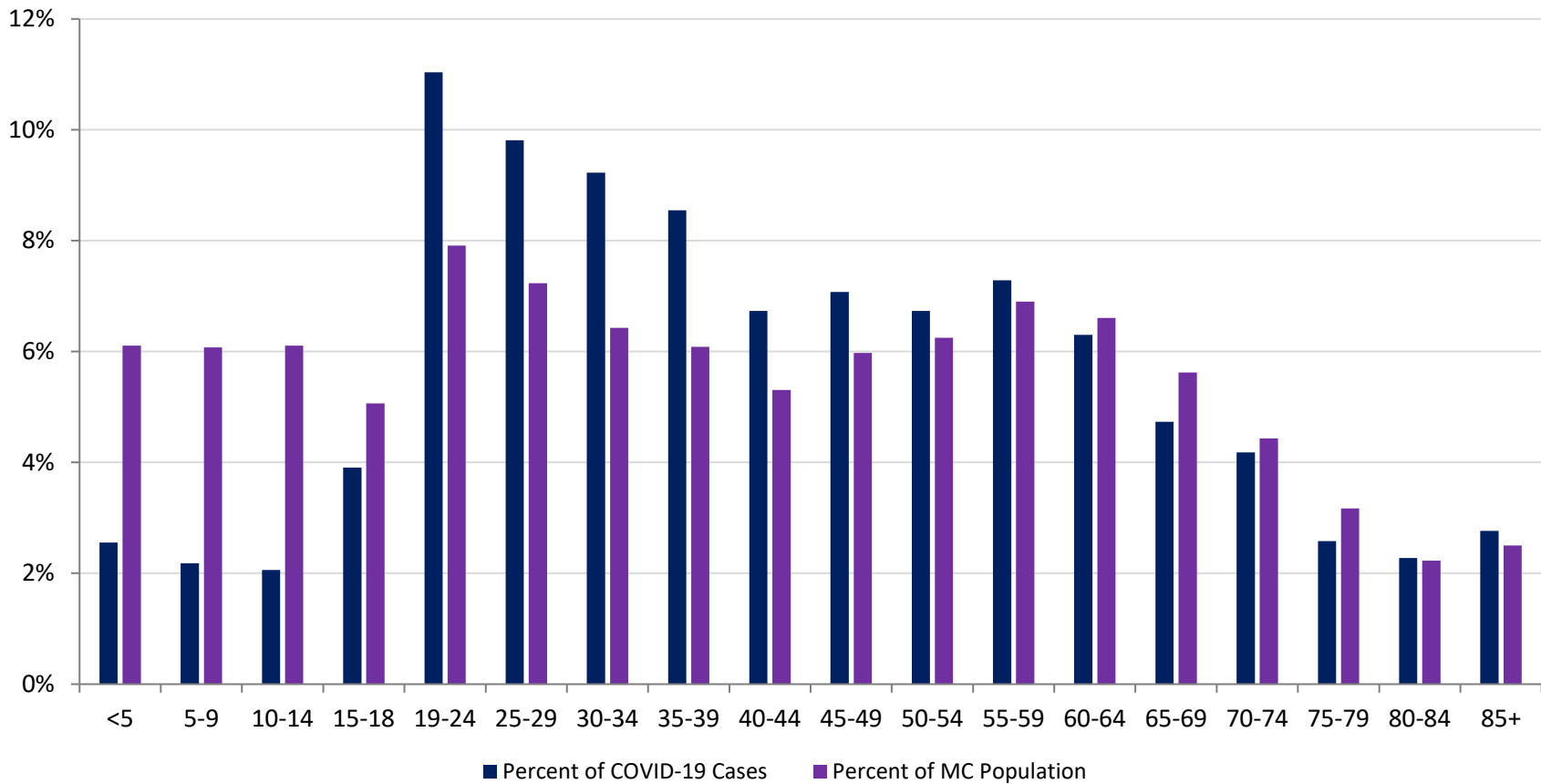


Montgomery County COVID-19 Cases by Health Care Worker Status As of 7/23/20		
Status	#	%
Health Care Worker	358	11.0%
Non-Health Care Worker	1,784	54.8%
Unknown	1,116	34.3%
Total	3,258	100%

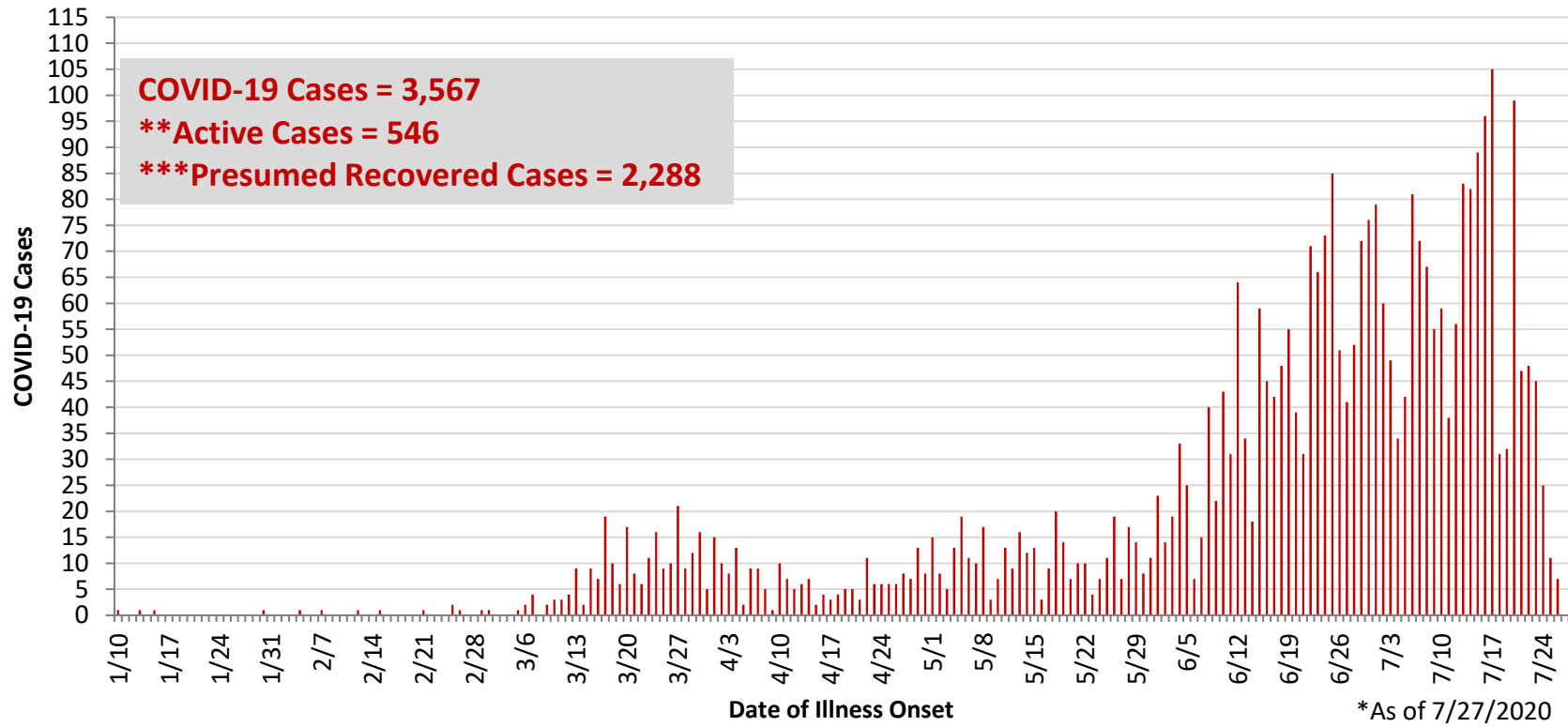
Montgomery County COVID-19 Cases Age Range As of 7/23/20	
Stat	Age in Years
Age Range	<1 - 104
Average Age	42.4
Median Age	40.0

Montgomery County COVID-19 Cases by Age Group As of 7/23/20				
Age Group	# Cases	Rate	Percent of COVID-19 Cases	Percent of MC Population
<5	83	255.2	2.6%	6.1%
5-9	71	219.6	2.2%	6.1%
10-14	67	206.1	2.1%	6.1%
15-18	127	471.1	3.9%	5.1%
19-24	359	852.2	11.0%	7.9%
25-29	319	828.7	9.8%	7.2%
30-34	300	877.0	9.2%	6.4%
35-39	278	857.8	8.5%	6.1%
40-44	219	775.1	6.7%	5.3%
45-49	230	723.3	7.1%	6.0%
50-54	219	658.6	6.7%	6.2%
55-59	237	645.3	7.3%	6.9%
60-64	205	583.0	6.3%	6.6%
65-69	154	514.6	4.7%	5.6%
70-74	136	576.0	4.2%	4.4%
75-79	84	497.8	2.6%	3.2%
80-84	74	624.1	2.3%	2.2%
85+	90	675.9	2.8%	2.5%
Total	3,252	610.9	100%	100%

Percent of Montgomery County COVID-19 Cases by Age Group vs Percent of Population by Age Group



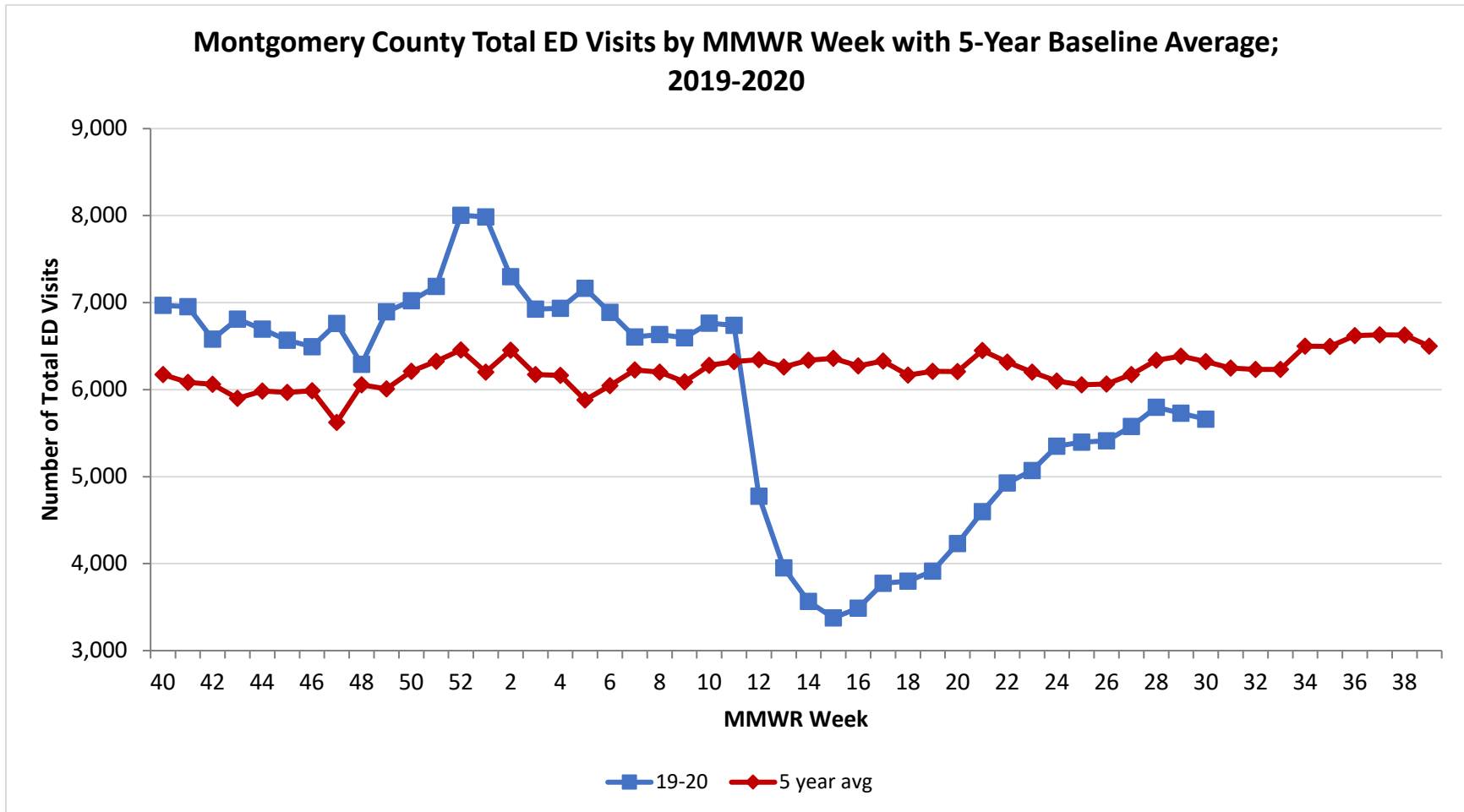
**PRELIMINARY COVID-19 Cases by Date of Illness Onset
Montgomery County, 1/10/20 - 7/27/20***



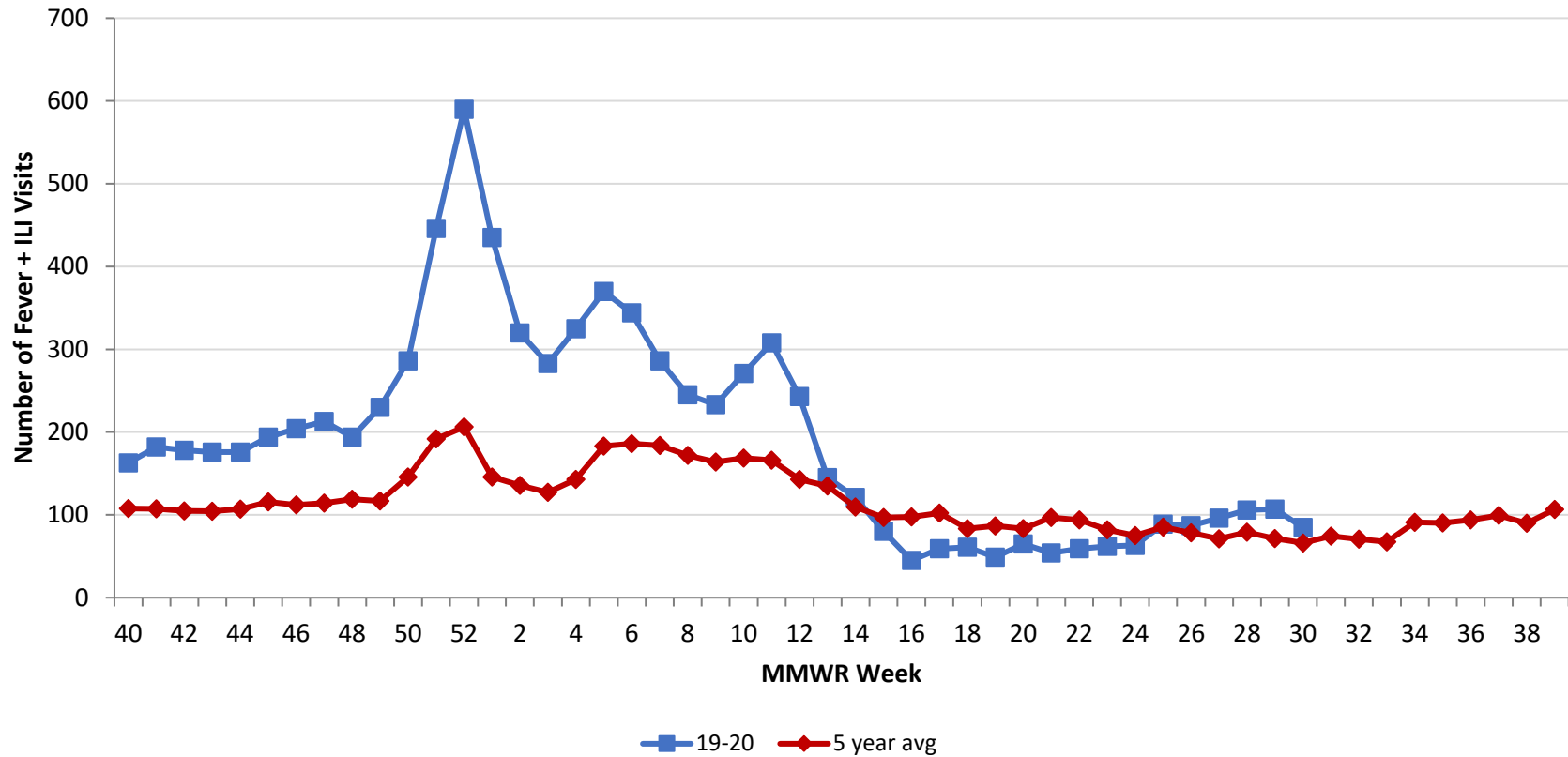
**Active cases are based on the reported illness onset date (using a 10-day window) of reported cases.

***Presumed recovered is defined as cases with a symptom onset date >21 days prior who are not deceased.

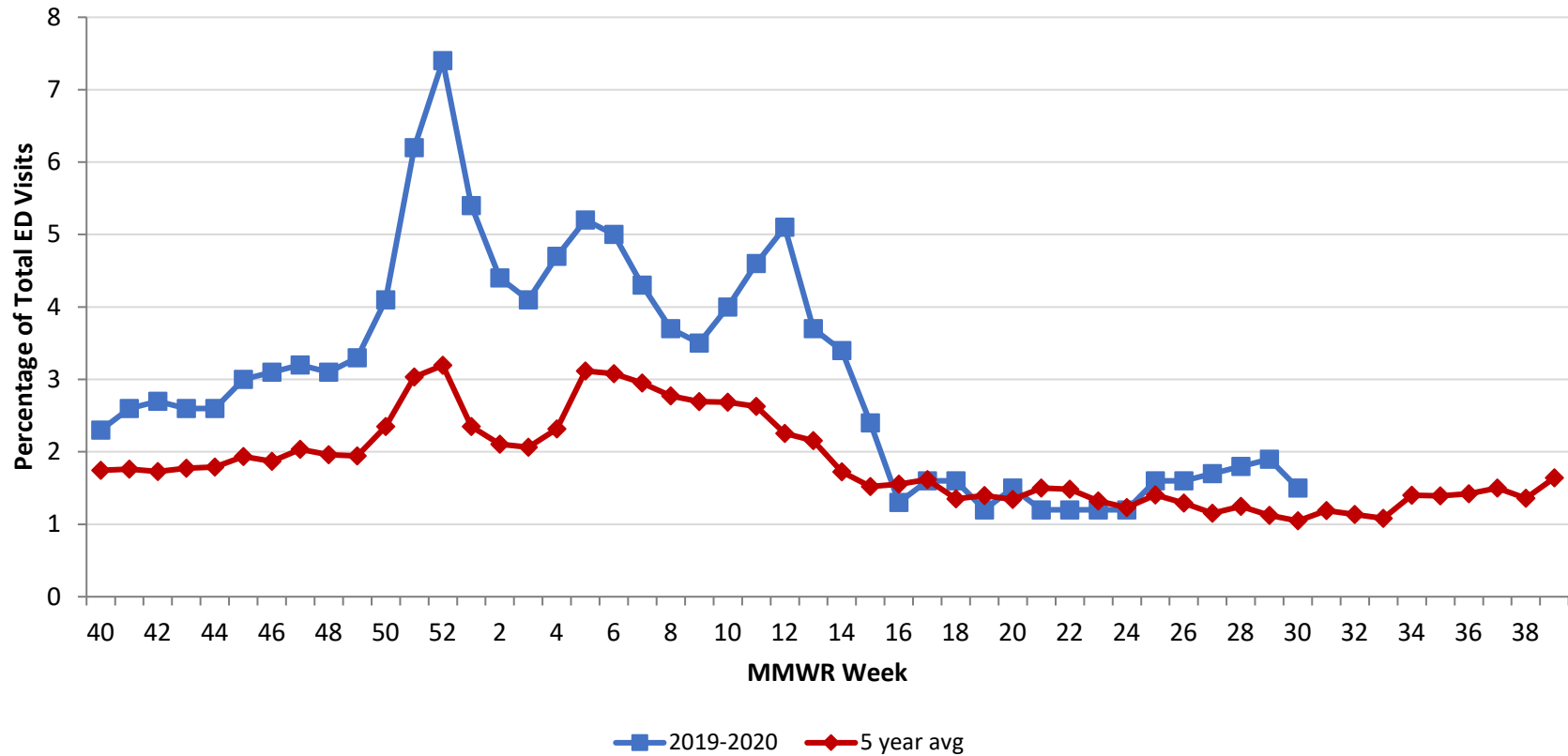
Source: EpiCenter Syndromic Surveillance, Health Monitoring Systems



Montgomery County Fever + ILI Specified ED Visits by MMWR Week with 5-Year Baseline Average; 2019-2020



Montgomery County Fever + ILI Specified ED Visits (% of Total Visits) by MMWR Week with 5-Year Baseline Average; 2019-2020



# Total Visits		
MMWR Week	19-20	5-Year Average
47	6,760	5622.8
48	6,292	6056.8
49	6,895	6008.0
50	7,022	6209.8
51	7,185	6324.4
52	8,005	6456.0
1	7,986	6200.8
2	7,297	6452.4
3	6,924	6172.9
4	6,935	6164.0
5	7,164	5881.8
6	6,888	6045.0
7	6,605	6226.8
8	6,633	6200.6
9	6,597	6088.2
10	6,763	6279.6
11	6,738	6321.6
12	4,775	6345.0
13	3,952	6259.8
14	3,565	6337.4
15	3,376	6360.6
16	3,489	6273.4
17	3,774	6327.8
18	3,798	6165.8
19	3,915	6209.8
20	4,231	6208.4
21	4,598	6,449.6
22	4,928	6,315.4
23	5,070	6,201.0
24	5,350	6,098.4
25	5,398	6,055.8
26	5,412	6,063.2
27	5,577	6,173.0
28	5,797	6,339.0
29	5,728	6384.6
30	5,661	6,322.0

# Fever + ILI Visits		
MMWR Week	19-20	5-Year Average
47	213	114.4
48	194	118.8
49	230	116.8
50	286	145.8
51	446	191.8
52	590	206.2
1	435	145.8
2	320	135.8
3	283	127.4
4	325	142.8
5	370	183.2
6	344	186.2
7	286	183.8
8	245	171.8
9	233	164.0
10	271	168.6
11	308	166.2
12	243	143.0
13	145	134.8
14	121	109.4
15	80	96.8
16	45	97.6
17	59	102.4
18	61	83.4
19	49	86.8
20	65	83.4
21	54	96.8
22	59	93.8
23	62	82.0
24	63	75.0
25	89	85.2
26	87	78.4
27	96	71.2
28	106	79.2
29	107	71.6
30	85	66.2

% Fever + ILI Visits		
MMWR Week	19-20	5-Year Average
47	3.2	2.0
48	3.1	2.0
49	3.3	1.9
50	4.1	2.3
51	6.2	3.0
52	7.4	3.2
1	5.4	2.4
2	4.4	2.1
3	4.1	2.1
4	4.7	2.3
5	5.2	3.1
6	5	3.1
7	4.3	3.0
8	3.7	2.8
9	3.5	2.7
10	4	2.7
11	4.6	2.6
12	5.1	2.3
13	3.7	2.2
14	3.4	1.7
15	2.4	1.5
16	1.3	1.6
17	1.6	1.6
18	1.6	1.4
19	1.2	1.4
20	1.5	1.3
21	1.2	1.5
22	1.2	1.5
23	1.2	1.3
24	1.2	1.2
25	1.6	1.4
26	1.6	1.3
27	1.7	1.2
28	1.8	1.2
29	1.9	1.1
30	1.5	1.0