



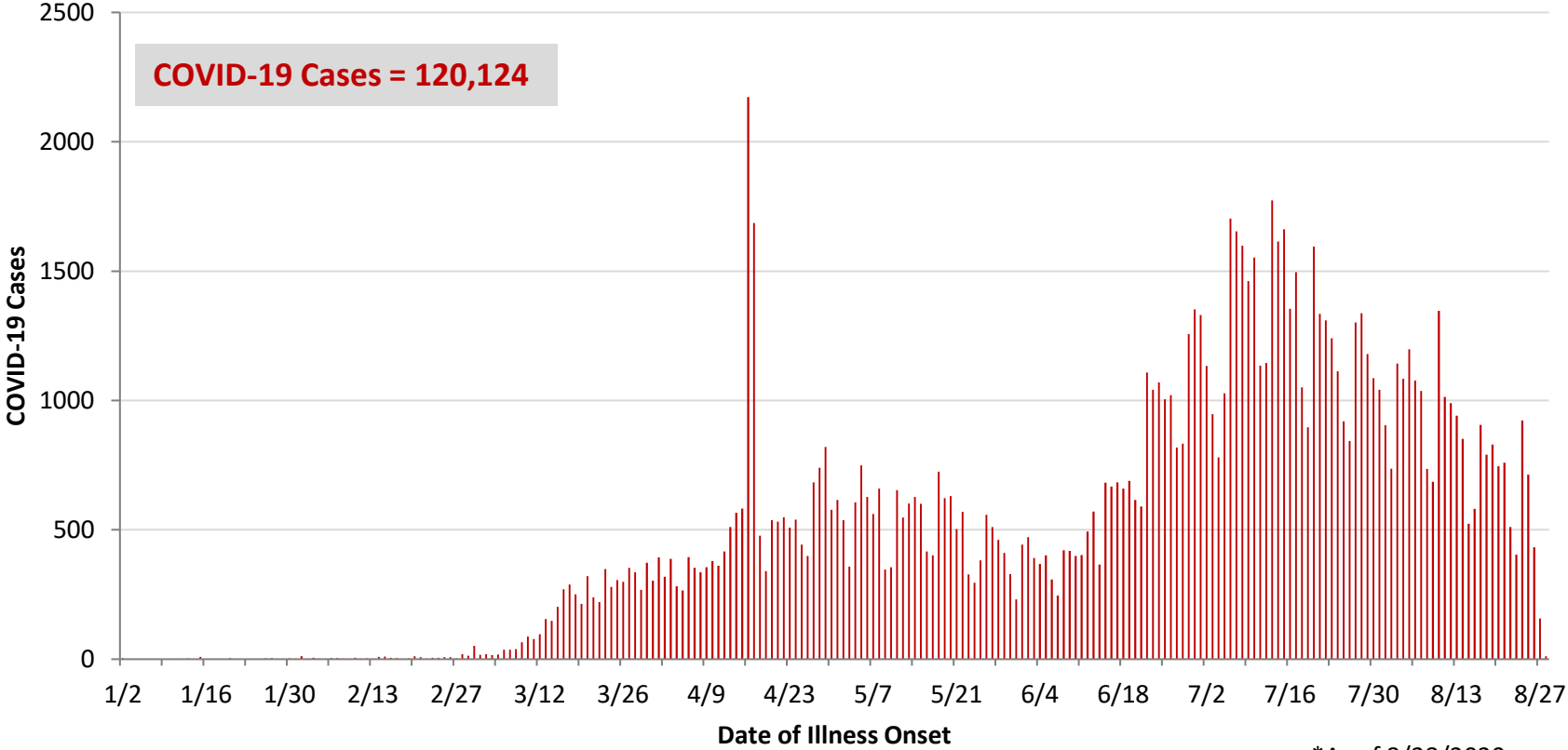
**Ohio, West Central Ohio (WCO), and Montgomery County COVID-19 Cases
As of 8/28/20**

Source: The State of Ohio COVID-19 Dashboard, Ohio Department of Health

Ohio:

Preliminary COVID-19 Cases Ohio, As of 8/28/2020		
Sex	# Cases	% Cases
Female	62,302	52%
Male	56,913	47%
Unknown	909	1%
Total	120,124	100%
Age Group		
Age Group	# Cases	% Cases
0-19	11,758	10%
20-29	24,463	20%
30-39	19,400	16%
40-49	17,252	14%
50-59	17,659	15%
60-69	13,253	11%
70-79	8,354	7%
80+	7,892	7%
Unknown	93	0%
Total	120,124	100%
Hospitalized	13,221	11.0%
Deaths	4,105	3.4%
Age Group		
Age Group	Deaths	% of Deaths
0-19	2	0%
20-29	14	0%
30-39	30	1%
40-49	69	2%
50-59	249	6%
60-69	580	14%
70-79	1,021	25%
80+	2,140	52%
Total	4,105	100%

**PRELIMINARY COVID-19 Cases by Date of Illness Onset
Ohio, 1/2/20 - 8/28/20***

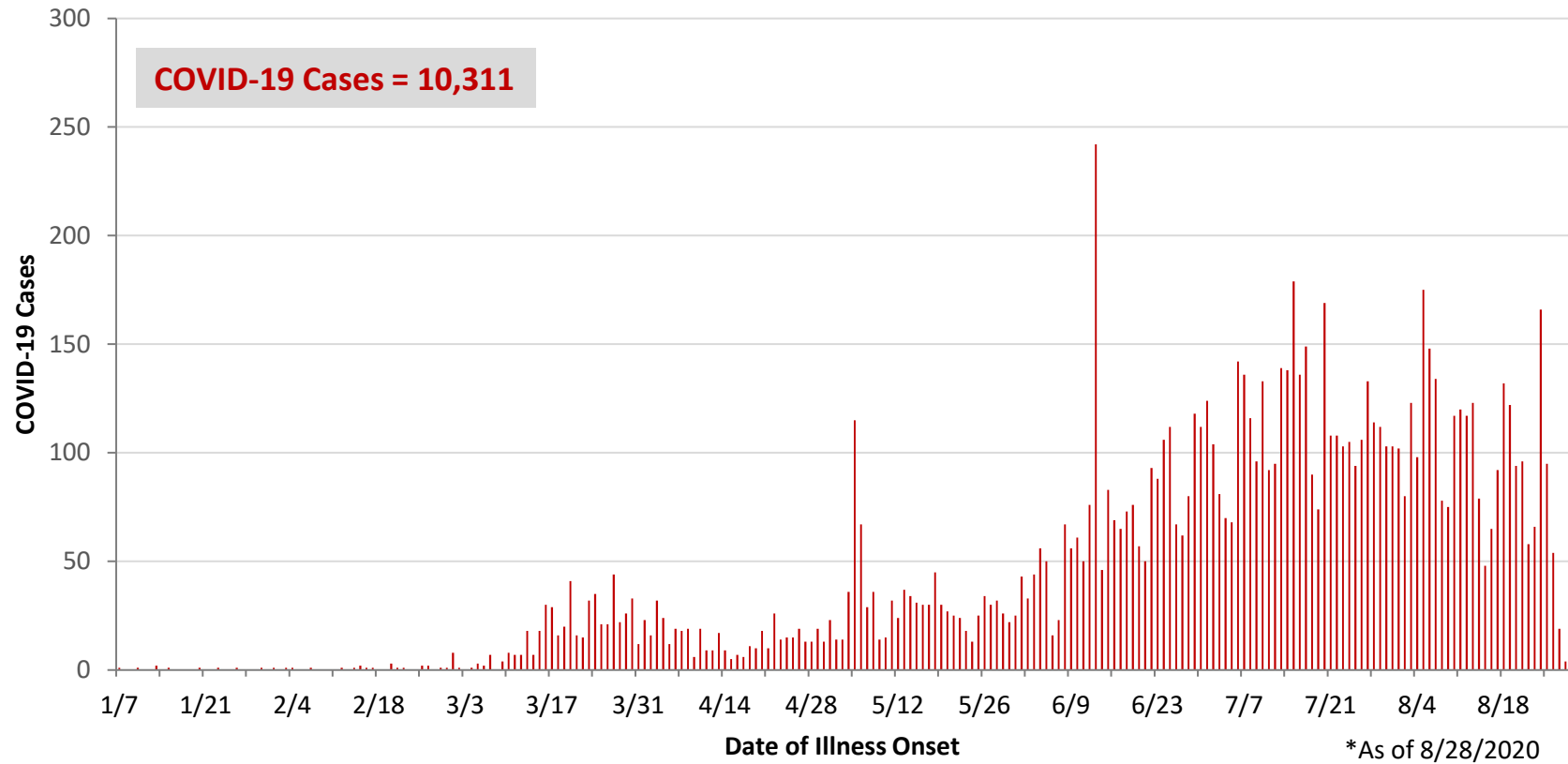


*As of 8/28/2020

WCO:

Preliminary COVID-19 Cases West Central Ohio, As of 8/28/2020		
County	# Cases	% Cases
Champaign	243	2%
Clark	1,394	14%
Darke	598	6%
Greene	945	9%
Miami	1,030	10%
Montgomery	5,436	53%
Preble	329	3%
Shelby	336	3%
Total	10,311	100%
Sex		
Sex	# Cases	% Cases
Female	5,653	55%
Male	4,484	43%
Unknown	174	2%
Total	10,311	100%
Age Group		
Age Group	# Cases	% Cases
0-19	1,140	11%
20-29	2,054	20%
30-39	1,565	15%
40-49	1,388	13%
50-59	1,496	15%
60-69	1,176	11%
70-79	795	8%
80+	697	7%
Total	10,311	100%
Hospitalized	1211	11.7%
Deaths	253	2.5%
Age Group		
Age Group	Deaths	% of Deaths
0-19	1	0%
20-29	3	1%
30-39	4	2%
40-49	5	2%
50-59	16	6%
60-69	38	15%
70-79	54	21%
80+	132	52%
Total	253	100%

**PRELIMINARY COVID-19 Cases by Date of Illness Onset
West Central Ohio, 1/7/20 - 8/28/20***



Montgomery County:

Preliminary COVID-19 Cases Montgomery County, As of 8/28/2020		
Sex	# Cases	% Cases
Female	3,047	56%
Male	2,329	43%
Unknown	60	1%
Total	5,436	100%
Age Group		
Age Group	# Cases	% Cases
0-19	680	13%
20-29	1,146	21%
30-39	844	16%
40-49	751	14%
50-59	757	14%
60-69	598	11%
70-79	373	7%
80+	285	5%
Unknown	2	0%
Total	5,436	100%
Hospitalized		
Hospitalized	729	13.4%
Deaths		
Deaths	122	2.2%
Age Group		
Age Group	Deaths	% of Deaths
0-19	1	1%
20-29	3	2%
30-39	3	2%
40-49	5	4%
50-59	10	8%
60-69	23	19%
70-79	29	24%
80+	48	39%
Total	122	100%

Age Group	Hospitalizations	% of Age Group Cases
0-19	26	3.8%
20-29	38	3.3%
30-39	64	7.6%
40-49	80	10.7%
50-59	136	18.0%
60-69	158	26.4%
70-79	134	35.9%
80+	93	32.6%
Total	729	13.4%

Source: Ohio Disease Reporting System, ODH

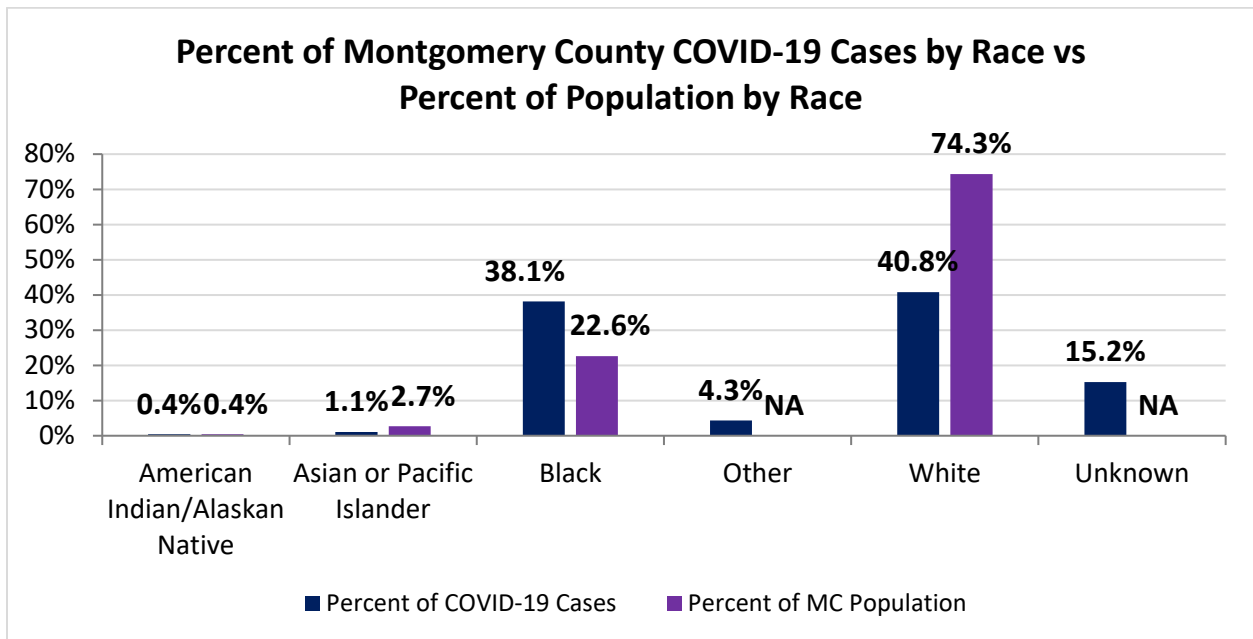
Note. All rates are per 100,000 population.

Montgomery County COVID-19 Cases by Race As of 8/24/20				
Race	Count	Percent	Case Rate	Rate Interpretation**
American Indian/Alaskan Native (AI/AN)*	20	0.4%	931.1	1 in 107
Asian	54	1.1%	379.5	1 in 264
Black	1,913	38.1%	1,589.4	1 in 63
Other	217	4.3%	NA	NA
White	2,047	40.8%	517.4	1 in 193
Unknown	764	15.2%	NA	NA
Total	5,015	100%	942.1	1 in 106

*Note. AI/ANs account for 0.4% of Montgomery County's population, and therefore, rates for this population will be large and may be misleading.

**Rate interpretation represents the number of cases for the given population.

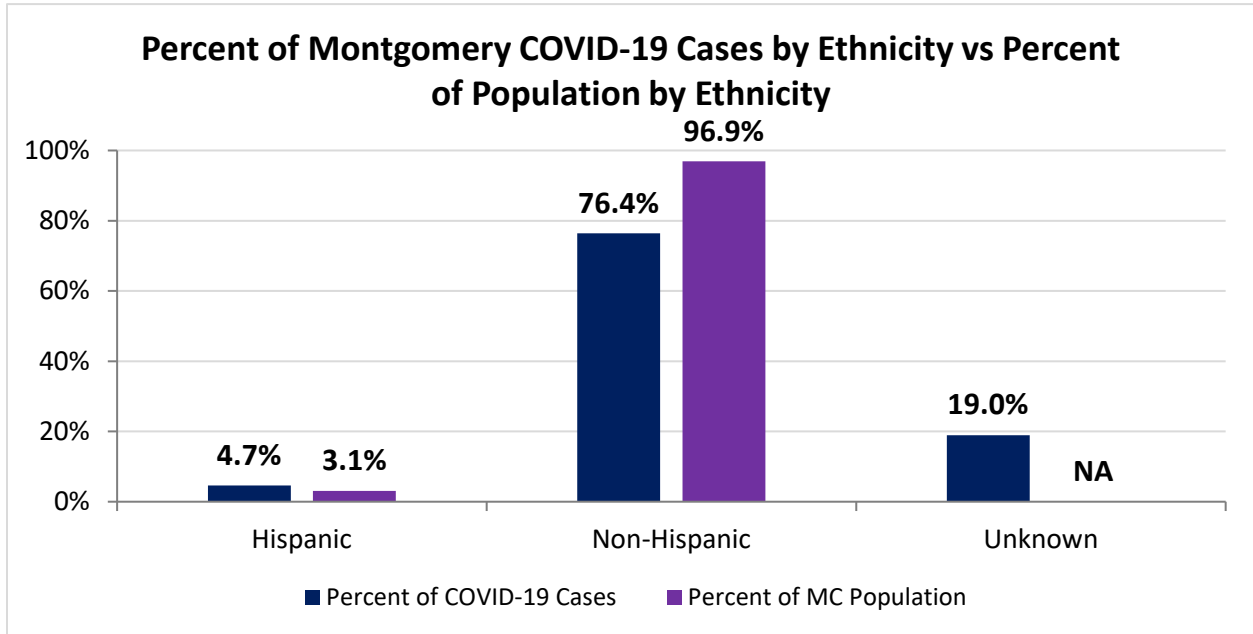
Example - there is a total of 1 case for every 106 Montgomery County residents.



Montgomery County COVID-19 Deaths by Race as of 8/24/2020		
Race	Count	Death Rate
American Indian/Alaskan Native	1	46.6
Asian or Pacific Islander	2	14.1
Black	44	36.6
Other	1	NA
White	66	16.7
Unknown	1	NA
Total	115	21.6

Montgomery County COVID-19 Cases by Ethnicity As of 8/24/20				
Ethnicity	Count	Percent	Case Rate	Rate Interpretation**
Hispanic	234	4.7%	1,421.6	1 in 70
Non-Hispanic	3,830	76.4%	742.4	1 in 135
Unknown	951	19.0%	NA	NA
Total	5,015	100%	942.1	1 in 106

**Rate interpretation represents the number of cases for the given population.
 Example - there is a total of 1 case for every 106 Montgomery County residents.

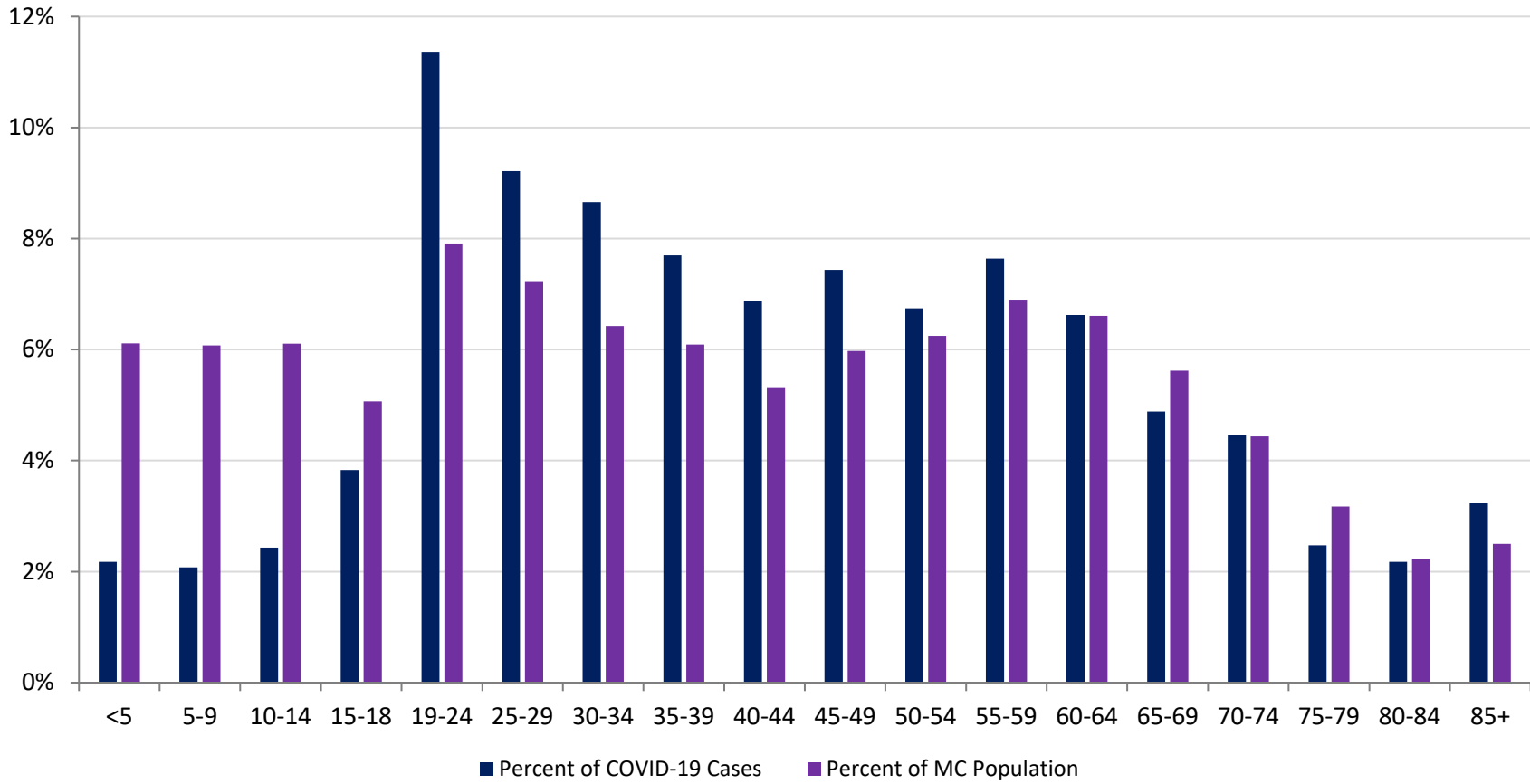


Montgomery County COVID-19 Cases by Health Care Worker Status As of 8/24/20		
Status	#	%
Health Care Worker	528	10.5%
Non-Health Care Worker	2,773	55.3%
Unknown	1,714	34.2%
Total	5,015	100%

Montgomery County COVID-19 Cases Age Range As of 8/24/20	
Stat	Age in Years
Age Range	<1 - 104
Average Age	43.1
Median Age	41.0

Montgomery County COVID-19 Cases by Age Group As of 8/24/20				
Age Group	# Cases	Case Rate	Percent of COVID-19 Cases	Percent of MC Population
<5	109	335.2	2.2%	6.1%
5-9	104	321.7	2.1%	6.1%
10-14	122	375.3	2.4%	6.1%
15-18	192	712.1	3.8%	5.1%
19-24	570	1,353.1	11.4%	7.9%
25-29	462	1,200.2	9.2%	7.2%
30-34	434	1,268.7	8.7%	6.4%
35-39	386	1,191.0	7.7%	6.1%
40-44	345	1,221.1	6.9%	5.3%
45-49	373	1,173.0	7.4%	6.0%
50-54	338	1,016.4	6.7%	6.2%
55-59	383	1,042.8	7.6%	6.9%
60-64	332	944.1	6.6%	6.6%
65-69	245	818.7	4.9%	5.6%
70-74	224	948.8	4.5%	4.4%
75-79	124	734.8	2.5%	3.2%
80-84	109	919.3	2.2%	2.2%
85+	162	1,216.6	3.2%	2.5%
Total	5,014	941.9	100%	100%

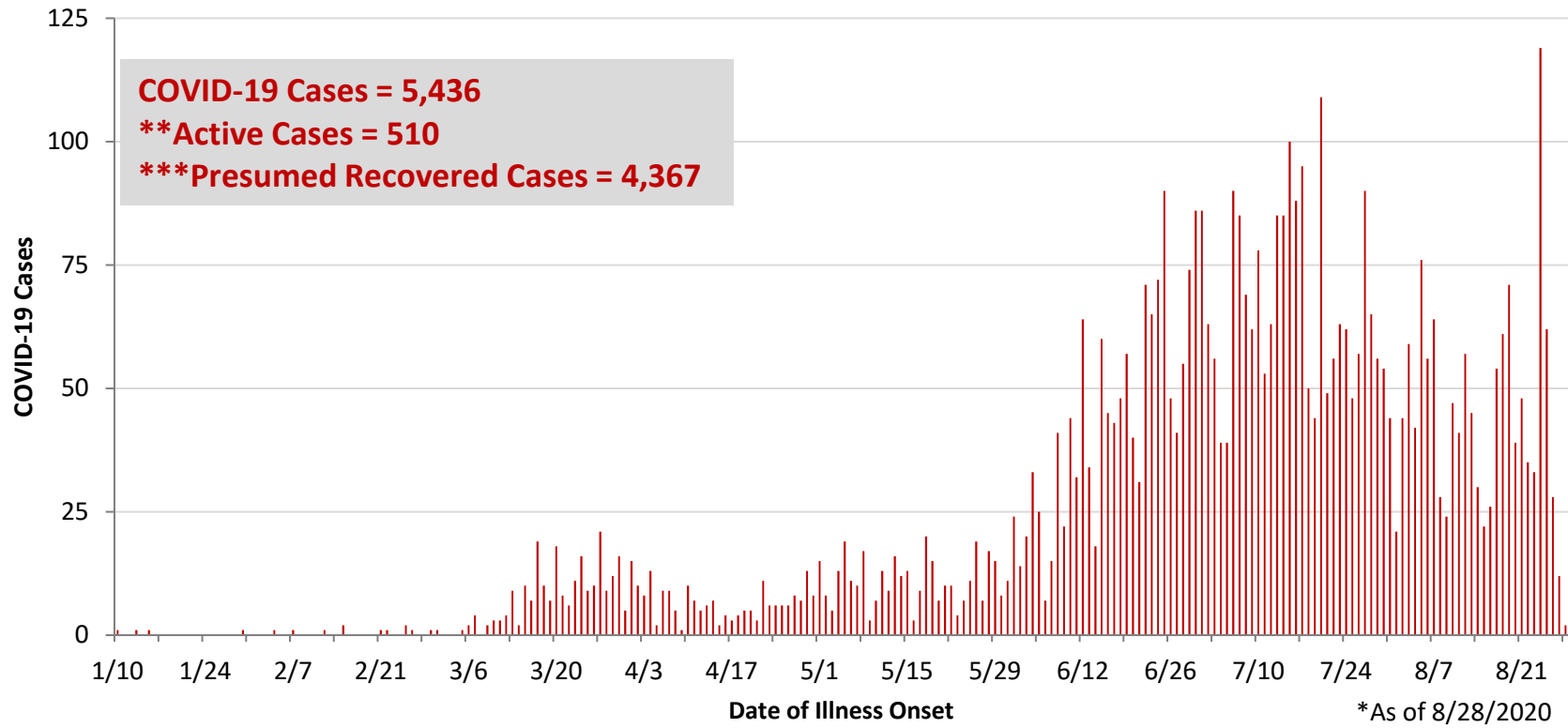
Percent of Montgomery County COVID-19 Cases by Age Group vs Percent of Population by Age Group



PRELIMINARY Montgomery County COVID-19 Cases by Age Group – Cases before 6/1 and June Cases vs July Cases As of 8/24/2020 (% change from June to July)

Age Group	# Cases <6/1	% of Cases <6/1	Case Rate <6/1	# Cases June	% of Cases June	Case Rate June	# Cases July	% of Cases July	Case Rate July	% Change # of Cases
<5	12	1.5%	36.9	39	3.0%	119.9	42	2.0%	129.2	7.7%
5-9	7	0.9%	21.7	30	2.3%	92.8	49	2.4%	151.6	63.3%
10-14	9	1.1%	27.7	29	2.2%	89.2	56	2.7%	172.3	93.1%
15-18	16	2.0%	59.3	60	4.6%	222.5	87	4.2%	322.7	45.0%
19-24	58	7.4%	137.7	154	11.7%	365.6	242	11.7%	574.5	57.1%
25-29	52	6.6%	135.1	149	11.3%	387.1	189	9.2%	491.0	26.8%
30-34	66	8.4%	192.9	133	10.1%	388.8	173	8.4%	505.7	30.1%
35-39	64	8.1%	197.5	124	9.4%	382.6	160	7.8%	493.7	29.0%
40-44	61	7.8%	215.9	83	6.3%	293.8	146	7.1%	516.8	75.9%
45-49	70	8.9%	220.1	94	7.2%	295.6	137	6.6%	430.8	45.7%
50-54	75	9.5%	225.5	75	5.7%	225.5	135	6.6%	406.0	80.0%
55-59	91	11.6%	247.8	79	6.0%	215.1	149	7.2%	405.7	88.6%
60-64	67	8.5%	190.5	68	5.2%	193.4	139	6.7%	395.3	104.4%
65-69	54	6.9%	180.5	46	3.5%	153.7	99	4.8%	330.8	115.2%
70-74	43	5.5%	182.1	45	3.4%	190.6	94	4.6%	398.1	108.9%
75-79	16	2.0%	94.8	34	2.6%	201.5	53	2.6%	314.1	55.9%
80-84	14	1.8%	118.1	29	2.2%	244.6	46	2.2%	388.0	58.6%
85+	12	1.5%	90.1	43	3.3%	322.9	65	3.2%	488.1	51.2%
Total	787	100%	147.8	1,314	100%	246.8	2,061	100%	387.2	56.8%

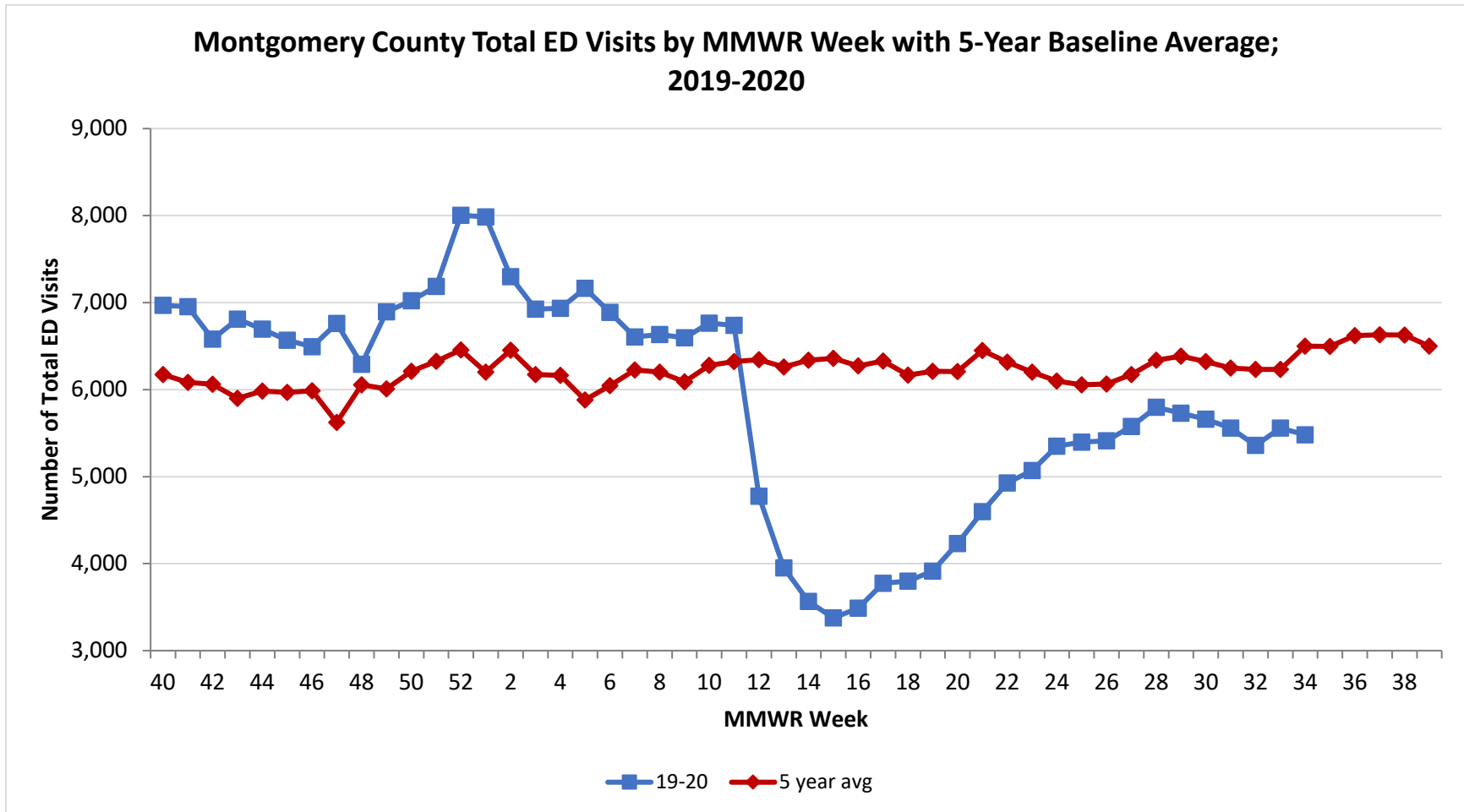
**PRELIMINARY COVID-19 Cases by Date of Illness Onset
Montgomery County, 1/10/20 - 8/28/20***



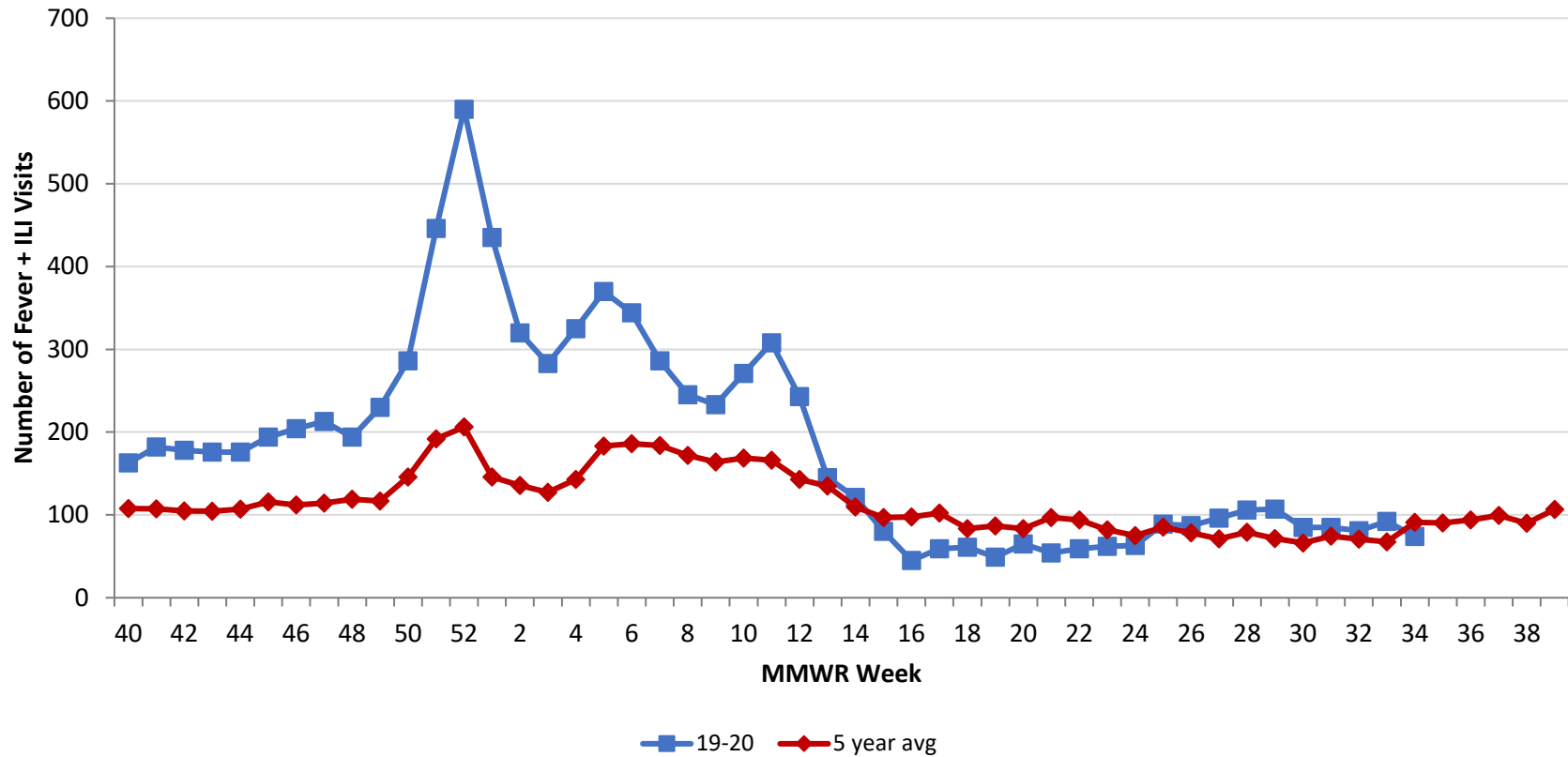
**Active cases are based on the reported illness onset date (using a 10-day window) of reported cases.

***Presumed recovered is defined as cases with a symptom onset date >21 days prior who are not deceased.

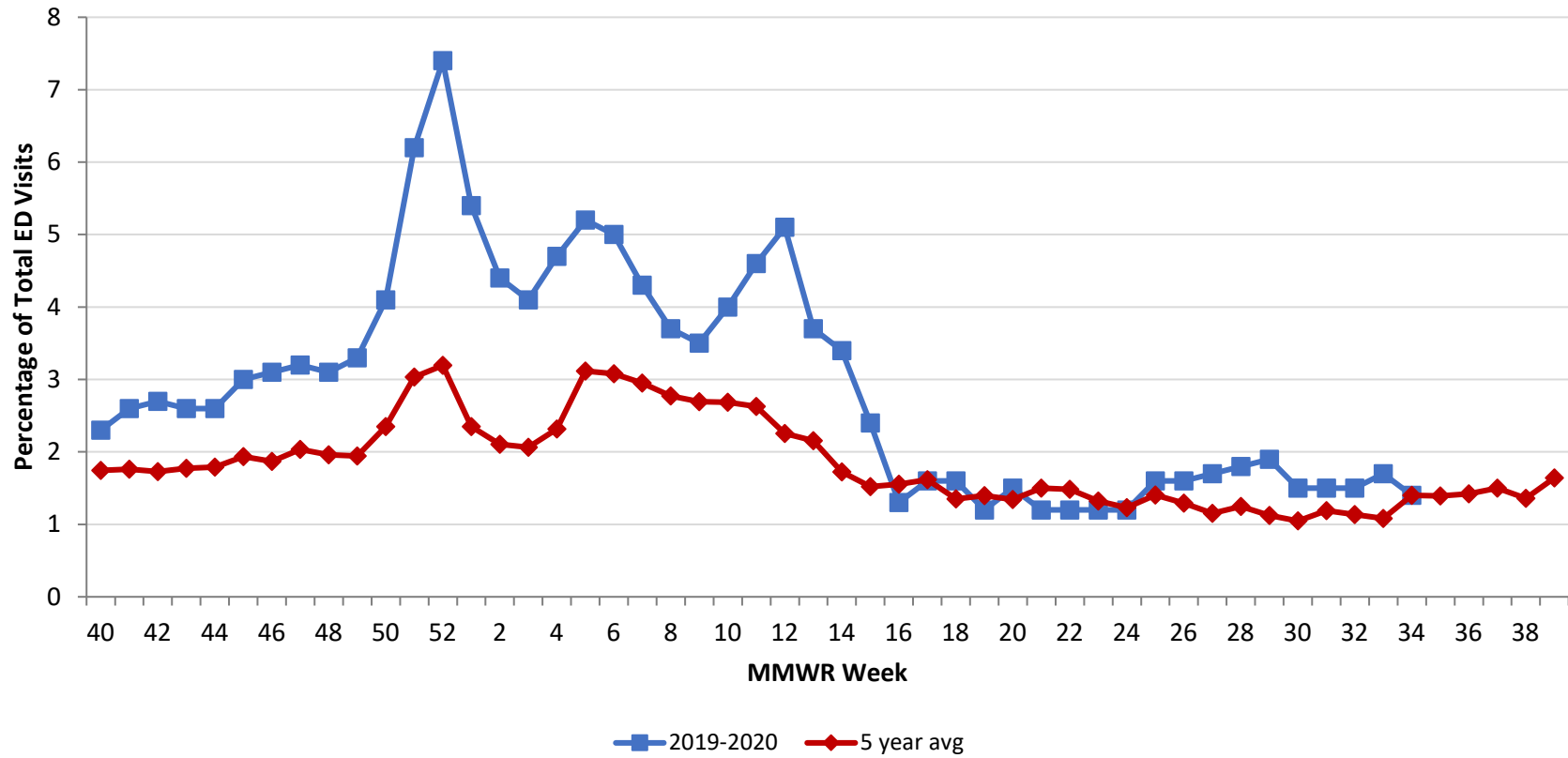
Source: EpiCenter Syndromic Surveillance, Health Monitoring Systems



Montgomery County Fever + ILI Specified ED Visits by MMWR Week with 5-Year Baseline Average; 2019-2020



Montgomery County Fever + ILI Specified ED Visits (% of Total Visits) by MMWR Week with 5-Year Baseline Average; 2019-2020



# Total Visits		
MMWR Week	19-20	5-Year Average
51	7,185	6324.4
52	8,005	6456.0
1	7,986	6200.8
2	7,297	6452.4
3	6,924	6172.9
4	6,935	6164.0
5	7,164	5881.8
6	6,888	6045.0
7	6,605	6226.8
8	6,633	6200.6
9	6,597	6088.2
10	6,763	6279.6
11	6,738	6321.6
12	4,775	6345.0
13	3,952	6259.8
14	3,565	6337.4
15	3,376	6360.6
16	3,489	6273.4
17	3,774	6327.8
18	3,798	6165.8
19	3,915	6209.8
20	4,231	6208.4
21	4,598	6,449.6
22	4,928	6,315.4
23	5,070	6,201.0
24	5,350	6,098.4
25	5,398	6,055.8
26	5,412	6,063.2
27	5,577	6,173.0
28	5,797	6,339.0
29	5,728	6384.6
30	5,661	6,322.0
31	5,557	6,247.2
32	5,359	6232.8
33	5,558	6,233.8
34	5,481	6,501.0

# Fever + ILI Visits		
MMWR Week	19-20	5-Year Average
51	446	191.8
52	590	206.2
1	435	145.8
2	320	135.8
3	283	127.4
4	325	142.8
5	370	183.2
6	344	186.2
7	286	183.8
8	245	171.8
9	233	164.0
10	271	168.6
11	308	166.2
12	243	143.0
13	145	134.8
14	121	109.4
15	80	96.8
16	45	97.6
17	59	102.4
18	61	83.4
19	49	86.8
20	65	83.4
21	54	96.8
22	59	93.8
23	62	82.0
24	63	75.0
25	89	85.2
26	87	78.4
27	96	71.2
28	106	79.2
29	107	71.6
30	85	66.2
31	85	74.2
32	81	70.8
33	92	67.4
34	74	91.0

% Fever + ILI Visits		
MMWR Week	19-20	5-Year Average
51	6.2	3.0
52	7.4	3.2
1	5.4	2.4
2	4.4	2.1
3	4.1	2.1
4	4.7	2.3
5	5.2	3.1
6	5	3.1
7	4.3	3.0
8	3.7	2.8
9	3.5	2.7
10	4	2.7
11	4.6	2.6
12	5.1	2.3
13	3.7	2.2
14	3.4	1.7
15	2.4	1.5
16	1.3	1.6
17	1.6	1.6
18	1.6	1.4
19	1.2	1.4
20	1.5	1.3
21	1.2	1.5
22	1.2	1.5
23	1.2	1.3
24	1.2	1.2
25	1.6	1.4
26	1.6	1.3
27	1.7	1.2
28	1.8	1.2
29	1.9	1.1
30	1.5	1.0
31	1.5	1.2
32	1.5	1.1
33	1.7	1.1
34	1.4	1.4