



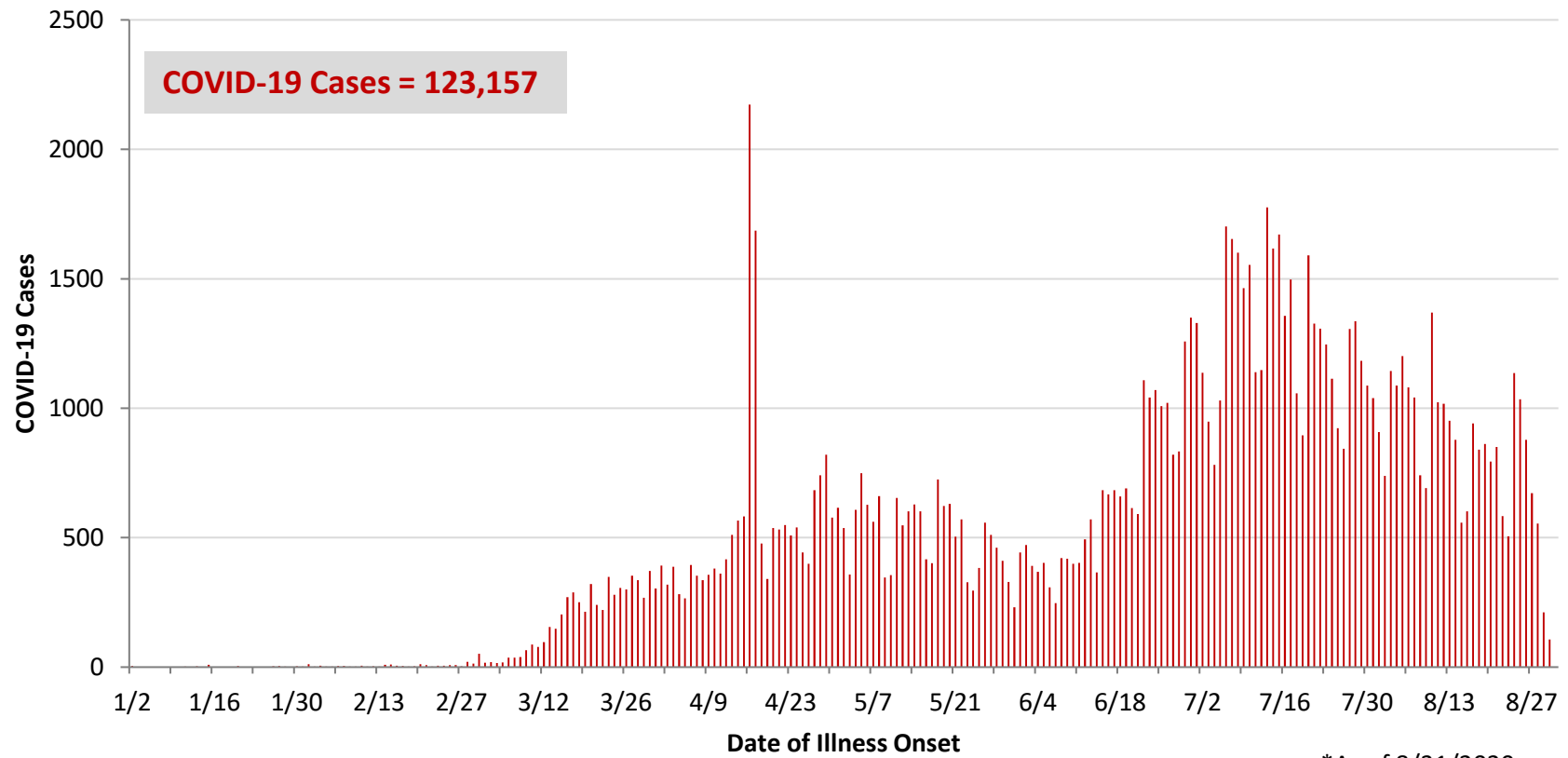
**Ohio, West Central Ohio (WCO), and Montgomery County COVID-19 Cases
As of 8/31/20**

Source: The State of Ohio COVID-19 Dashboard, Ohio Department of Health

Ohio:

Preliminary COVID-19 Cases Ohio, As of 8/31/2020		
Sex	# Cases	% Cases
Female	64,016	52%
Male	58,208	47%
Unknown	933	1%
Total	123,157	100%
Age Group		
Age Group	# Cases	% Cases
0-19	12,415	10%
20-29	25,347	21%
30-39	19,722	16%
40-49	17,532	14%
50-59	17,985	15%
60-69	13,499	11%
70-79	8,518	7%
80+	8,037	7%
Unknown	102	0%
Total	123,157	100%
Hospitalized		
Hospitalized	13,376	10.9%
Deaths		
Deaths	4,138	3.4%
Age Group		
Age Group	Deaths	% of Deaths
0-19	2	0%
20-29	14	0%
30-39	30	1%
40-49	69	2%
50-59	250	6%
60-69	584	14%
70-79	1,028	25%
80+	2,161	52%
Total	4,138	100%

**PRELIMINARY COVID-19 Cases by Date of Illness Onset
Ohio, 1/2/20 - 8/31/20***

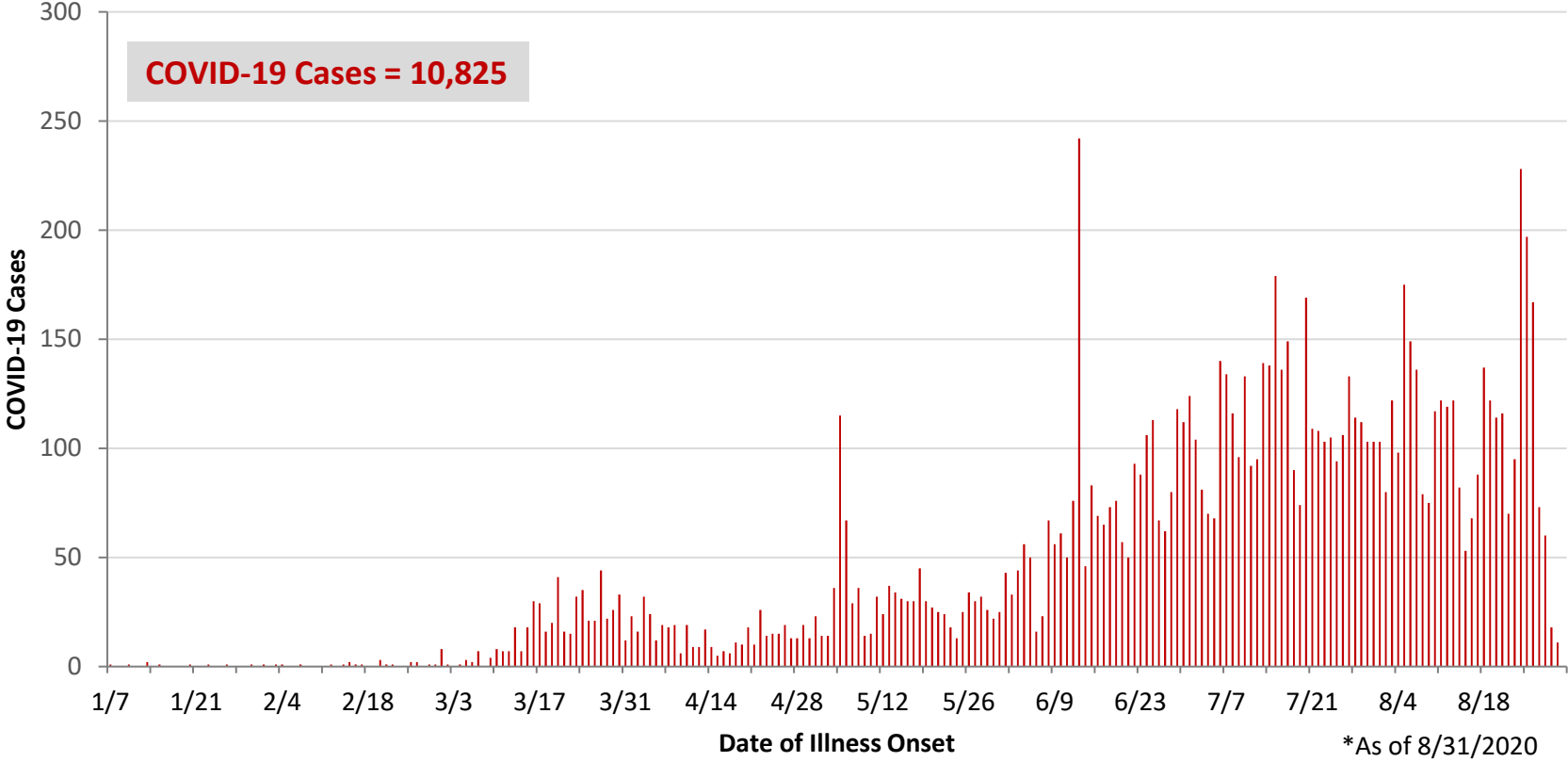


*As of 8/31/2020

WCO:

Preliminary COVID-19 Cases West Central Ohio, As of 8/31/2020		
County	# Cases	% Cases
Champaign	249	2%
Clark	1,420	13%
Darke	622	6%
Greene	977	9%
Miami	1,060	10%
Montgomery	5,786	53%
Preble	347	3%
Shelby	364	3%
Total	10,825	100%
Sex		
Sex	# Cases	% Cases
Female	5,945	55%
Male	4,711	44%
Unknown	169	2%
Total	10,825	100%
Age Group		
Age Group	# Cases	% Cases
0-19	1,284	12%
20-29	2,258	21%
30-39	1,600	15%
40-49	1,423	13%
50-59	1,529	14%
60-69	1,196	11%
70-79	819	8%
80+	716	7%
Total	10,825	100%
Hospitalized	1,229	11.4%
Deaths	264	2.4%
Age Group		
Age Group	Deaths	% of Deaths
0-19	1	0%
20-29	3	1%
30-39	4	2%
40-49	5	2%
50-59	16	6%
60-69	39	15%
70-79	57	22%
80+	139	53%
Total	264	100%

**PRELIMINARY COVID-19 Cases by Date of Illness Onset
West Central Ohio, 1/7/20 - 8/31/20***



Montgomery County:

Preliminary COVID-19 Cases Montgomery County, As of 8/31/2020		
Sex	# Cases	% Cases
Female	3,252	56%
Male	2,479	43%
Unknown	55	1%
Total	5,786	100%
Age Group		
Age Group	# Cases	% Cases
0-19	798	14%
20-29	1,316	23%
30-39	859	15%
40-49	762	13%
50-59	770	13%
60-69	606	10%
70-79	384	7%
80+	289	5%
Unknown	2	0%
Total	5,786	100%
Hospitalized		
Hospitalized	740	12.8%
Deaths		
Deaths	131	2.3%
Age Group		
Age Group	Deaths	% of Deaths
0-19	1	1%
20-29	3	2%
30-39	3	2%
40-49	5	4%
50-59	10	8%
60-69	24	18%
70-79	31	24%
80+	54	41%
Total	131	100%

Age Group	Hospitalizations	% of Age Group Cases
0-19	28	3.5%
20-29	39	3.0%
30-39	65	7.6%
40-49	80	10.5%
50-59	138	17.9%
60-69	159	26.2%
70-79	137	35.7%
80+	94	32.5%
Total	740	12.8%

Source: Ohio Disease Reporting System, ODH

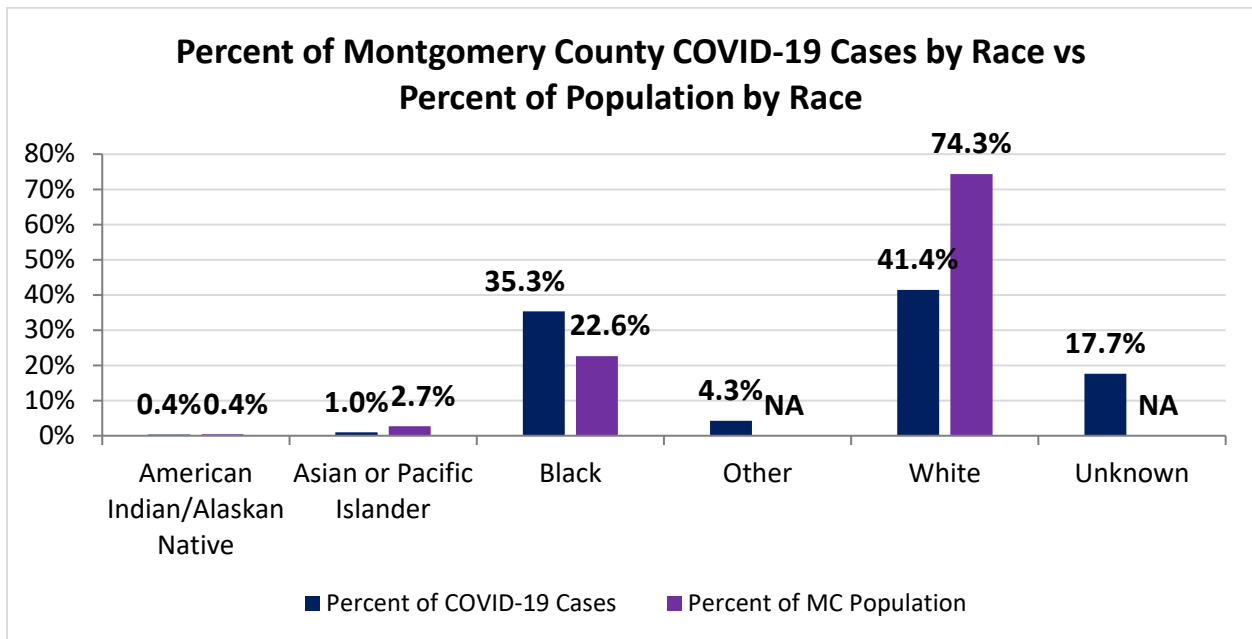
Note. All rates are per 100,000 population.

Montgomery County COVID-19 Cases by Race As of 8/30/20				
Race	Count	Percent	Case Rate	Rate Interpretation**
American Indian/Alaskan Native (AI/AN)*	20	0.4%	931.1	1 in 107
Asian	57	1.0%	400.6	1 in 250
Black	2,003	35.3%	1,664.2	1 in 60
Other	242	4.3%	NA	NA
White	2,348	41.4%	593.5	1 in 169
Unknown	1,001	17.7%	NA	NA
Total	5,671	100%	1,065.3	1 in 94

*Note. AI/ANs account for 0.4% of Montgomery County's population, and therefore, rates for this population will be large and may be misleading.

**Rate interpretation represents the number of cases for the given population.

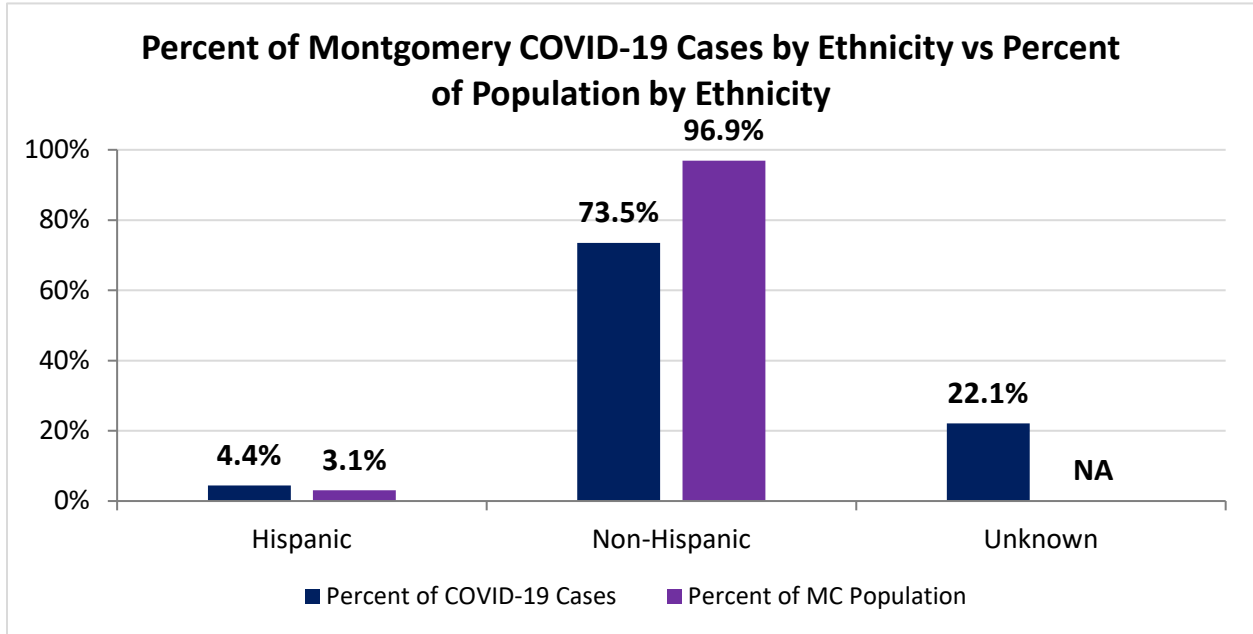
Example - there is a total of 1 case for every 94 Montgomery County residents.



Montgomery County COVID-19 Deaths by Race as of 8/30/2020		
Race	Count	Death Rate
American Indian/Alaskan Native	1	46.6
Asian or Pacific Islander	2	14.1
Black	50	41.5
Other	1	NA
White	75	19.0
Unknown	1	NA
Total	130	24.4

Montgomery County COVID-19 Cases by Ethnicity As of 8/30/20				
Ethnicity	Count	Percent	Case Rate	Rate Interpretation**
Hispanic	249	4.4%	1,512.8	1 in 66
Non-Hispanic	4,170	73.5%	808.3	1 in 124
Unknown	1,252	22.1%	NA	NA
Total	5,671	100%	1,065.3	1 in 94

**Rate interpretation represents the number of cases for the given population.
 Example - there is a total of 1 case for every 94 Montgomery County residents.

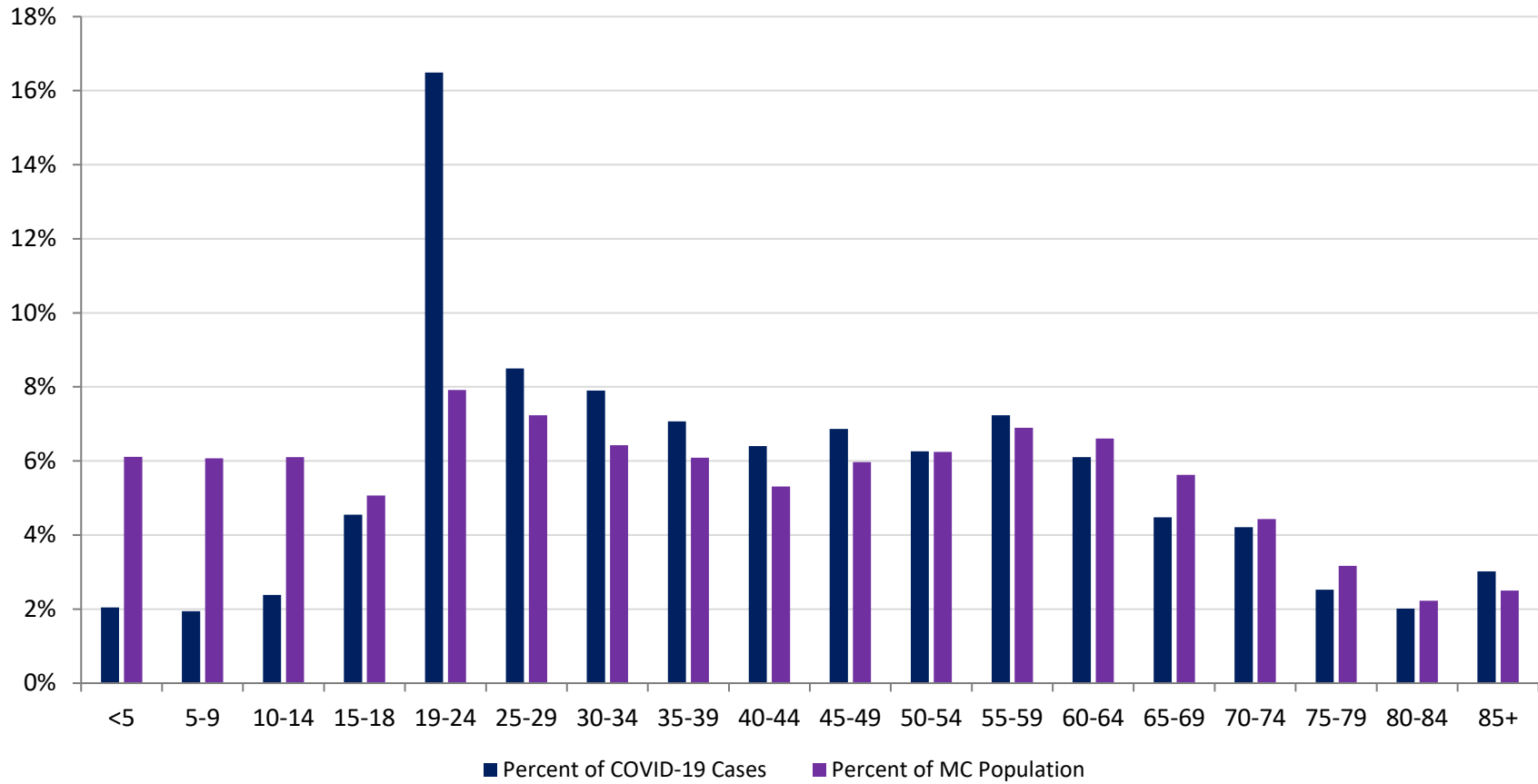


Montgomery County COVID-19 Cases by Health Care Worker Status As of 8/30/20		
Status	#	%
Health Care Worker	564	9.9%
Non-Health Care Worker	3,081	54.3%
Unknown	2,026	35.7%
Total	5,671	100%

Montgomery County COVID-19 Cases Age Range As of 8/30/20	
Stat	Age in Years
Age Range	<1 - 104
Average Age	41.5
Median Age	39.0

Montgomery County COVID-19 Cases by Age Group As of 8/30/20				
Age Group	# Cases	Case Rate	Percent of COVID-19 Cases	Percent of MC Population
<5	116	356.7	2.0%	6.1%
5-9	110	340.3	1.9%	6.1%
10-14	135	415.3	2.4%	6.1%
15-18	258	956.9	4.6%	5.1%
19-24	935	2,219.5	16.5%	7.9%
25-29	482	1,252.1	8.5%	7.2%
30-34	448	1,309.6	7.9%	6.4%
35-39	401	1,237.3	7.1%	6.1%
40-44	363	1,284.8	6.4%	5.3%
45-49	389	1,223.3	6.9%	6.0%
50-54	355	1,067.6	6.3%	6.2%
55-59	410	1,116.3	7.2%	6.9%
60-64	346	983.9	6.1%	6.6%
65-69	254	848.8	4.5%	5.6%
70-74	239	1,012.3	4.2%	4.4%
75-79	143	847.4	2.5%	3.2%
80-84	114	961.5	2.0%	2.2%
85+	171	1,284.2	3.0%	2.5%
Total	5,669	1,064.9	100%	100%

Percent of Montgomery County COVID-19 Cases by Age Group vs Percent of Population by Age Group

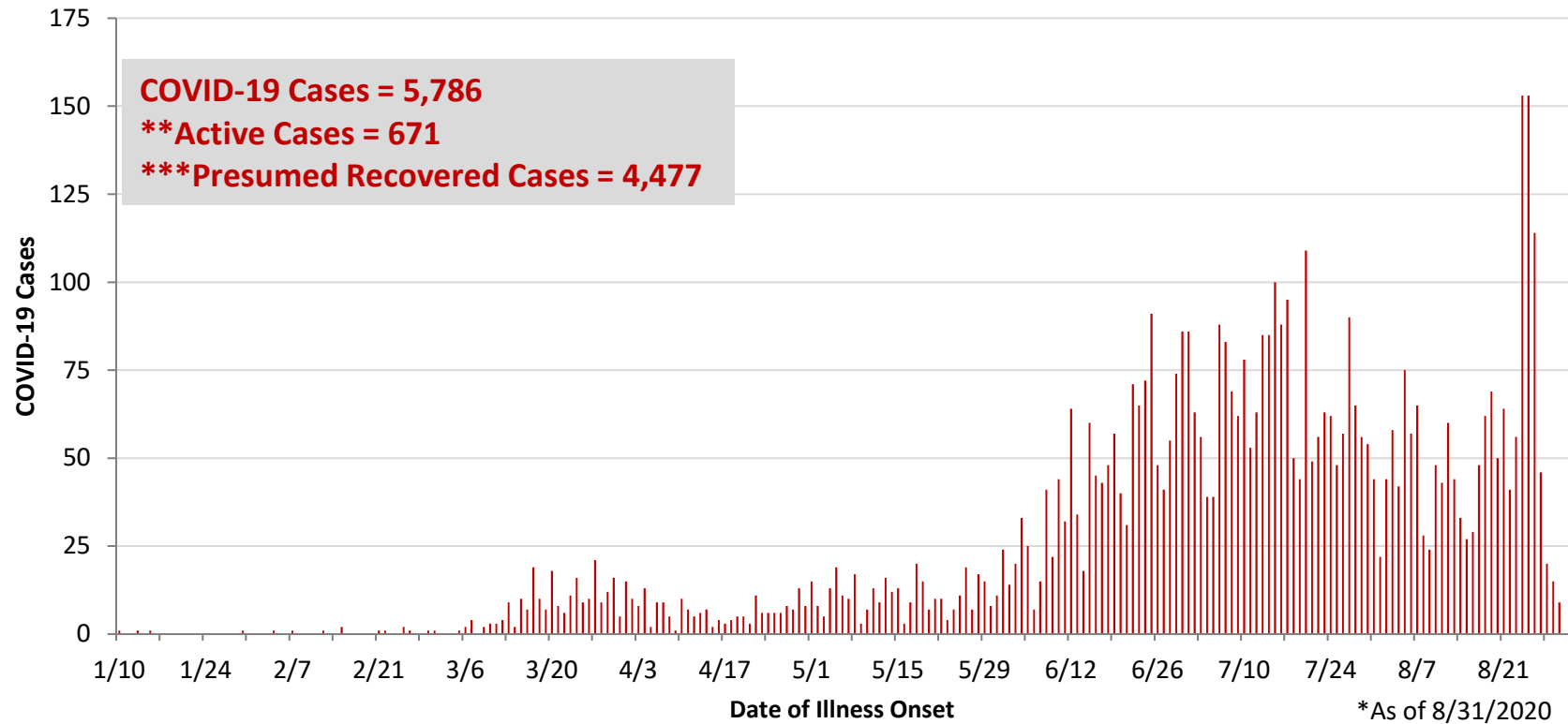


PRELIMINARY Montgomery County COVID-19 Cases by Age Group – Cases before 6/1 and June Cases vs July Cases As of 8/30/2020 (% change from June to July)

Age Group	# Cases <6/1	% of Cases <6/1	Case Rate <6/1	# Cases June	% of Cases June	Case Rate June	# Cases July	% of Cases July	Case Rate July	% Change # of Cases
<5	12	1.5%	36.9	39	3.0%	119.9	42	2.0%	129.2	7.7%
5-9	7	0.9%	21.7	30	2.3%	92.8	50	2.4%	154.7	66.7%
10-14	9	1.1%	27.7	29	2.2%	89.2	56	2.7%	172.3	93.1%
15-18	16	2.0%	59.3	60	4.6%	222.5	88	4.2%	326.4	46.7%
19-24	58	7.4%	137.7	154	11.7%	365.6	244	11.8%	579.2	58.4%
25-29	52	6.6%	135.1	150	11.4%	389.7	188	9.1%	488.4	25.3%
30-34	66	8.4%	192.9	133	10.1%	388.8	174	8.4%	508.6	30.8%
35-39	64	8.1%	197.5	124	9.4%	382.6	160	7.7%	493.7	29.0%
40-44	61	7.8%	215.9	84	6.4%	297.3	148	7.1%	523.8	76.2%
45-49	70	8.9%	220.1	94	7.1%	295.6	139	6.7%	437.1	47.9%
50-54	75	9.5%	225.5	75	5.7%	225.5	138	6.6%	415.0	84.0%
55-59	91	11.6%	247.8	79	6.0%	215.1	151	7.3%	411.1	91.1%
60-64	67	8.5%	190.5	68	5.2%	193.4	140	6.7%	398.1	105.9%
65-69	54	6.9%	180.5	47	3.6%	157.1	98	4.7%	327.5	108.5%
70-74	43	5.5%	182.1	45	3.4%	190.6	95	4.6%	402.4	111.1%
75-79	16	2.0%	94.8	34	2.6%	201.5	53	2.6%	314.1	55.9%
80-84	14	1.8%	118.1	29	2.2%	244.6	47	2.3%	396.4	62.1%
85+	12	1.5%	90.1	43	3.3%	322.9	65	3.1%	488.1	51.2%
Total	787	100%	147.8	1,317	100%	247.4	2,076	100%	390.0	57.6%

PRELIMINARY Montgomery County COVID-19 Cases by Age Group –July Cases vs August Cases As of 8/30/2020 (% change from July to August)							
Age Group	# Cases July	% of Cases July	Case Rate July	# Cases August	% of Cases August	Case Rate August	% Change # of Cases
<5	42	2.0%	129.2	23	1.5%	70.7	-45.2%
5-9	50	2.4%	154.7	23	1.5%	71.2	-54.0%
10-14	56	2.7%	172.3	41	2.8%	126.1	-26.8%
15-18	88	4.2%	326.4	94	6.3%	348.7	6.8%
19-24	244	11.8%	579.2	479	32.2%	1137.0	96.3%
25-29	188	9.1%	488.4	92	6.2%	239.0	-51.1%
30-34	174	8.4%	508.6	75	5.0%	219.2	-56.9%
35-39	160	7.7%	493.7	53	3.6%	163.5	-66.9%
40-44	148	7.1%	523.8	70	4.7%	247.8	-52.7%
45-49	139	6.7%	437.1	86	5.8%	270.4	-38.1%
50-54	138	6.6%	415.0	67	4.5%	201.5	-51.4%
55-59	151	7.3%	411.1	89	6.0%	242.3	-41.1%
60-64	140	6.7%	398.1	71	4.8%	201.9	-49.3%
65-69	98	4.7%	327.5	55	3.7%	183.8	-43.9%
70-74	95	4.6%	402.4	56	3.8%	237.2	-41.1%
75-79	53	2.6%	314.1	40	2.7%	237.0	-24.5%
80-84	47	2.3%	396.4	24	1.6%	202.4	-48.9%
85+	65	3.1%	488.1	51	3.4%	383.0	-21.5%
Total	2,076	100%	390.0	1,489	100%	279.7	-28.3%

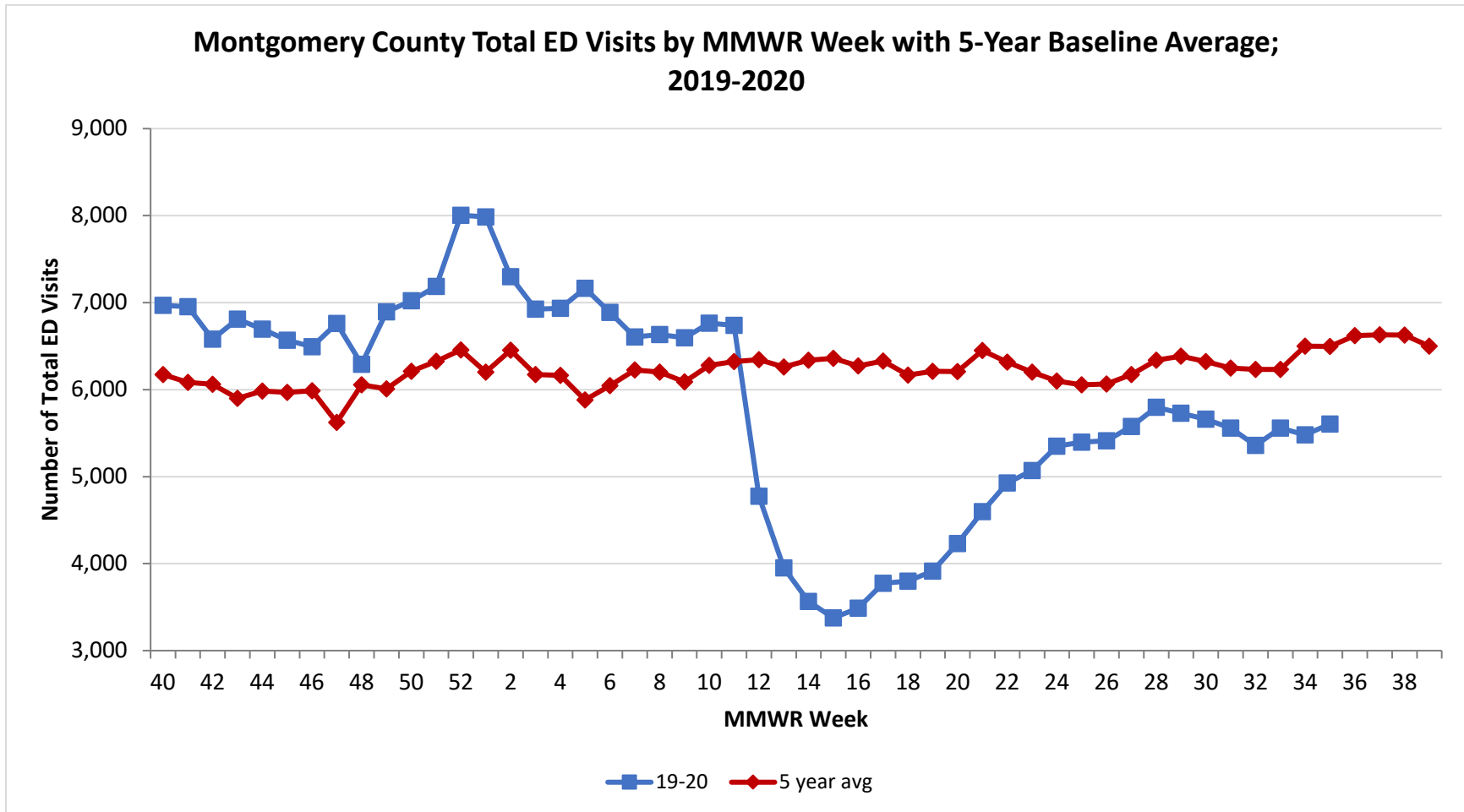
**PRELIMINARY COVID-19 Cases by Date of Illness Onset
Montgomery County, 1/10/20 - 8/31/20***



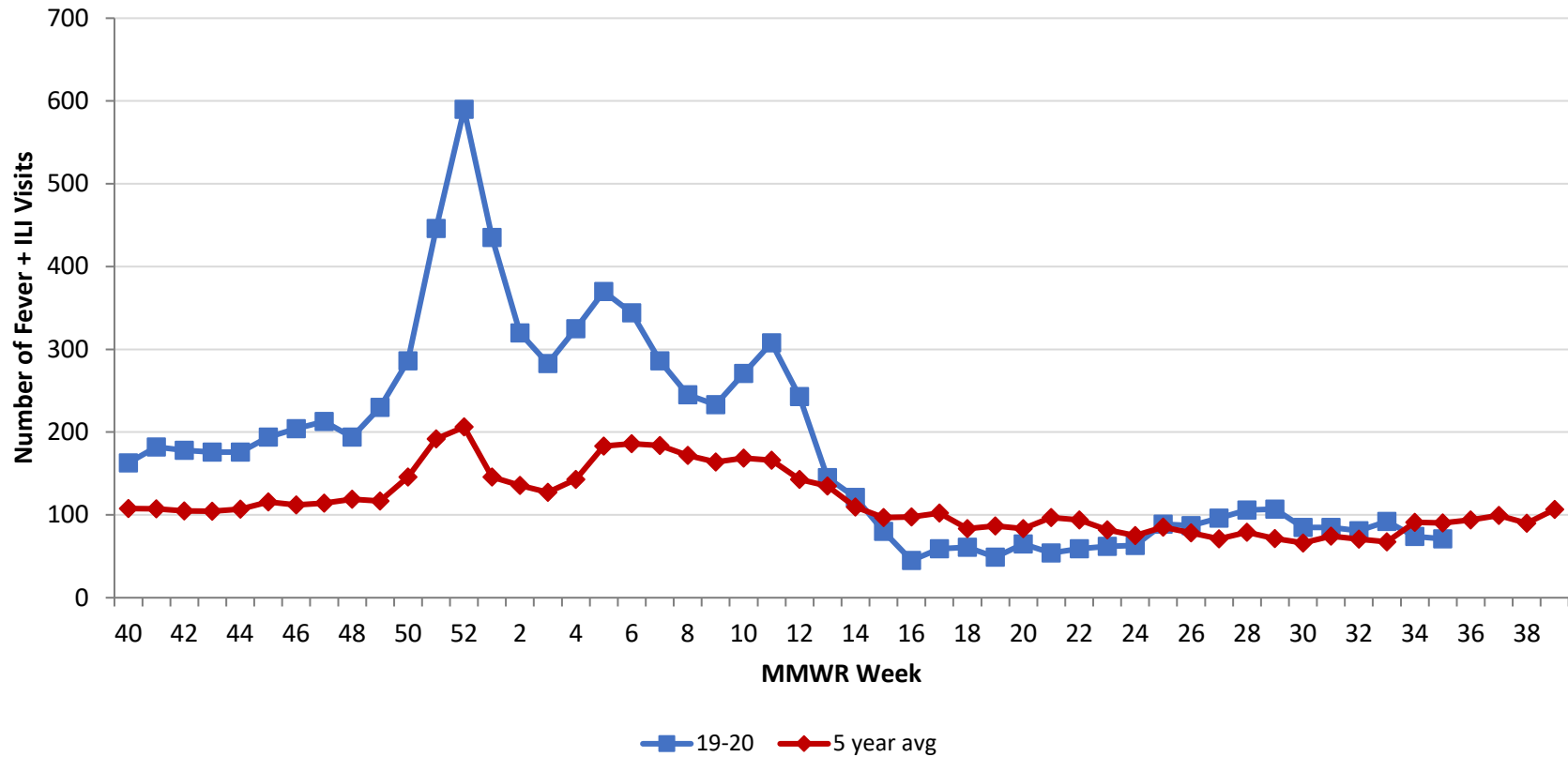
**Active cases are based on the reported illness onset date (using a 10-day window) of reported cases.

***Presumed recovered is defined as cases with a symptom onset date >21 days prior who are not deceased.

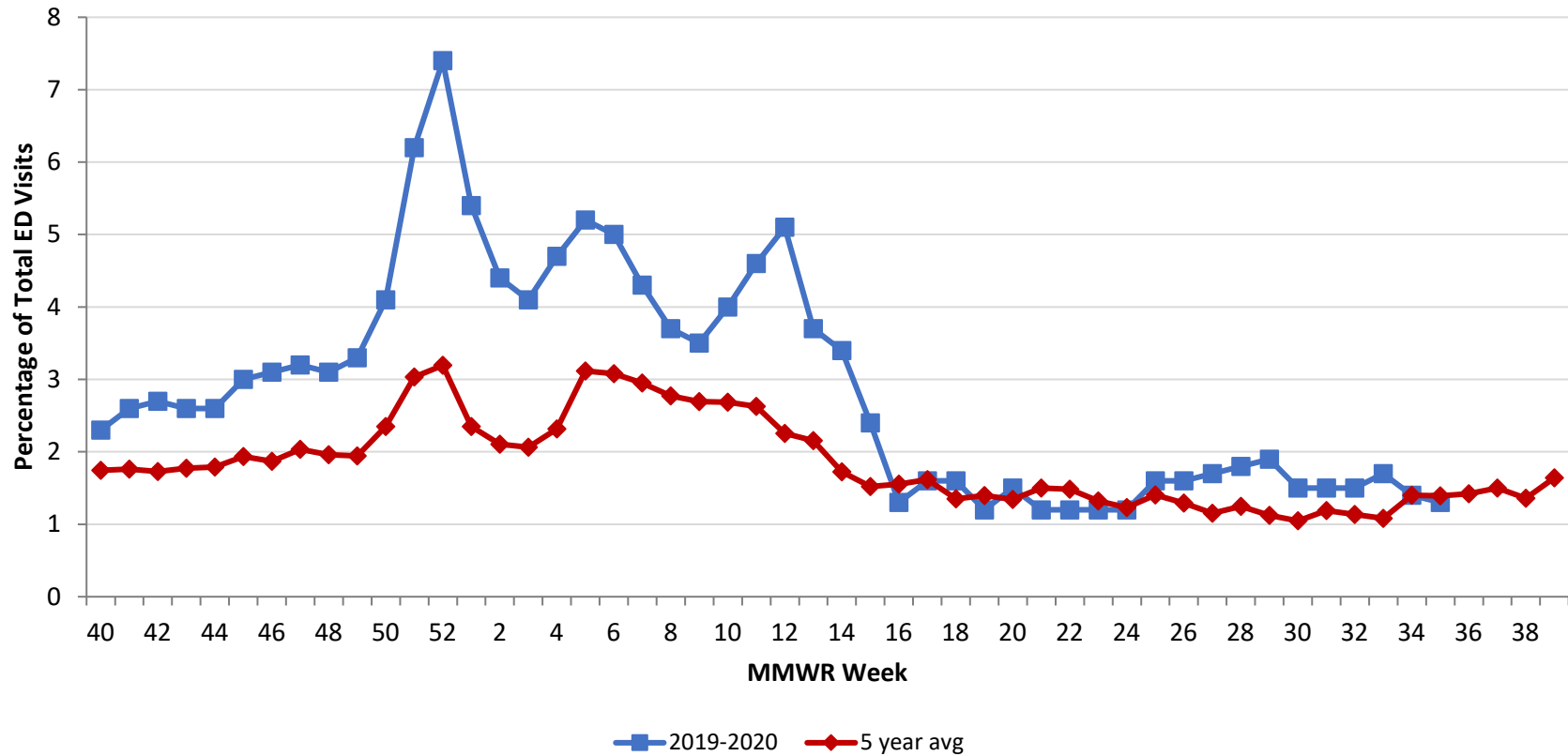
Source: EpiCenter Syndromic Surveillance, Health Monitoring Systems



Montgomery County Fever + ILI Specified ED Visits by MMWR Week with 5-Year Baseline Average; 2019-2020



**Montgomery County Fever + ILI Specified ED Visits (% of Total Visits) by MMWR Week
with 5-Year Baseline Average; 2019-2020**



# Total Visits		
MMWR Week	19-20	5-Year Average
52	8,005	6456.0
1	7,986	6200.8
2	7,297	6452.4
3	6,924	6172.9
4	6,935	6164.0
5	7,164	5881.8
6	6,888	6045.0
7	6,605	6226.8
8	6,633	6200.6
9	6,597	6088.2
10	6,763	6279.6
11	6,738	6321.6
12	4,775	6345.0
13	3,952	6259.8
14	3,565	6337.4
15	3,376	6360.6
16	3,489	6273.4
17	3,774	6327.8
18	3,798	6165.8
19	3,915	6209.8
20	4,231	6208.4
21	4,598	6,449.6
22	4,928	6,315.4
23	5,070	6,201.0
24	5,350	6,098.4
25	5,398	6,055.8
26	5,412	6,063.2
27	5,577	6,173.0
28	5,797	6,339.0
29	5,728	6384.6
30	5,661	6,322.0
31	5,557	6,247.2
32	5,359	6232.8
33	5,558	6,233.8
34	5,481	6,501.0
35	5,606	6,496.2

# Fever + ILI Visits		
MMWR Week	19-20	5-Year Average
52	590	206.2
1	435	145.8
2	320	135.8
3	283	127.4
4	325	142.8
5	370	183.2
6	344	186.2
7	286	183.8
8	245	171.8
9	233	164.0
10	271	168.6
11	308	166.2
12	243	143.0
13	145	134.8
14	121	109.4
15	80	96.8
16	45	97.6
17	59	102.4
18	61	83.4
19	49	86.8
20	65	83.4
21	54	96.8
22	59	93.8
23	62	82.0
24	63	75.0
25	89	85.2
26	87	78.4
27	96	71.2
28	106	79.2
29	107	71.6
30	85	66.2
31	85	74.2
32	81	70.8
33	92	67.4
34	74	91.0
35	71	90.4

% Fever + ILI Visits		
MMWR Week	19-20	5-Year Average
52	7.4	3.2
1	5.4	2.4
2	4.4	2.1
3	4.1	2.1
4	4.7	2.3
5	5.2	3.1
6	5	3.1
7	4.3	3.0
8	3.7	2.8
9	3.5	2.7
10	4	2.7
11	4.6	2.6
12	5.1	2.3
13	3.7	2.2
14	3.4	1.7
15	2.4	1.5
16	1.3	1.6
17	1.6	1.6
18	1.6	1.4
19	1.2	1.4
20	1.5	1.3
21	1.2	1.5
22	1.2	1.5
23	1.2	1.3
24	1.2	1.2
25	1.6	1.4
26	1.6	1.3
27	1.7	1.2
28	1.8	1.2
29	1.9	1.1
30	1.5	1.0
31	1.5	1.2
32	1.5	1.1
33	1.7	1.1
34	1.4	1.4
35	1.3	1.4