



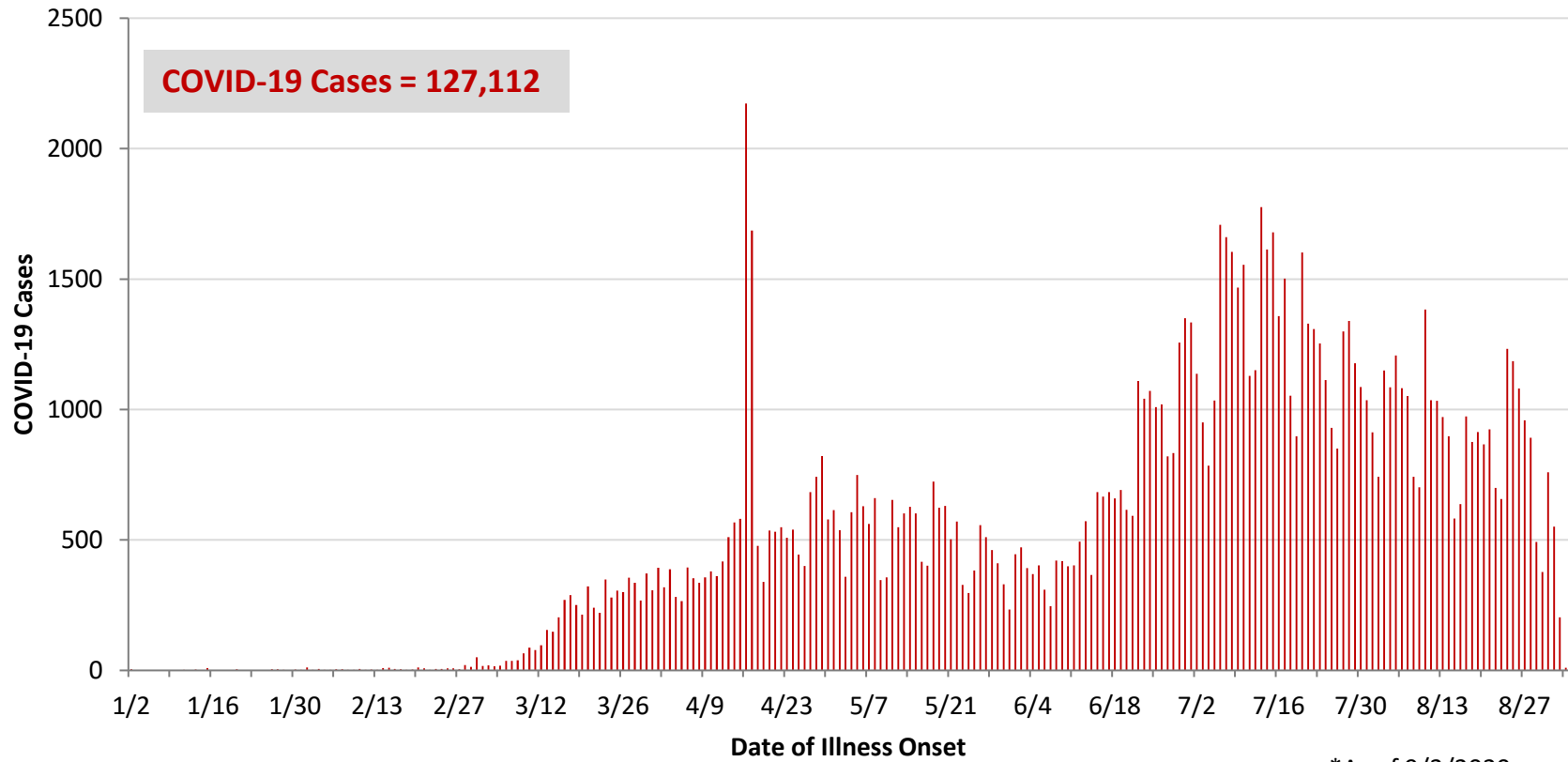
**Ohio, West Central Ohio (WCO), and Montgomery County COVID-19 Cases
As of 9/3/20**

Source: The State of Ohio COVID-19 Dashboard, Ohio Department of Health

Ohio:

Preliminary COVID-19 Cases Ohio, As of 9/3/2020		
Sex	# Cases	% Cases
Female	66,054	52%
Male	60,019	47%
Unknown	1,039	1%
Total	127,112	100%
Age Group		
Age Group	# Cases	% Cases
0-19	13,365	11%
20-29	26,503	21%
30-39	20,077	16%
40-49	17,883	14%
50-59	18,418	14%
60-69	13,827	11%
70-79	8,743	7%
80+	8,194	6%
Unknown	102	0%
Total	127,112	100%
Hospitalized		
Hospitalized	13,663	10.7%
Deaths		
Deaths	4,226	3.3%
Age Group		
Age Group	Deaths	% of Deaths
0-19	2	0%
20-29	14	0%
30-39	31	1%
40-49	72	2%
50-59	252	6%
60-69	595	14%
70-79	1,050	25%
80+	2,210	52%
Total	4,226	100%

**PRELIMINARY COVID-19 Cases by Date of Illness Onset
Ohio, 1/2/20 - 9/3/20***

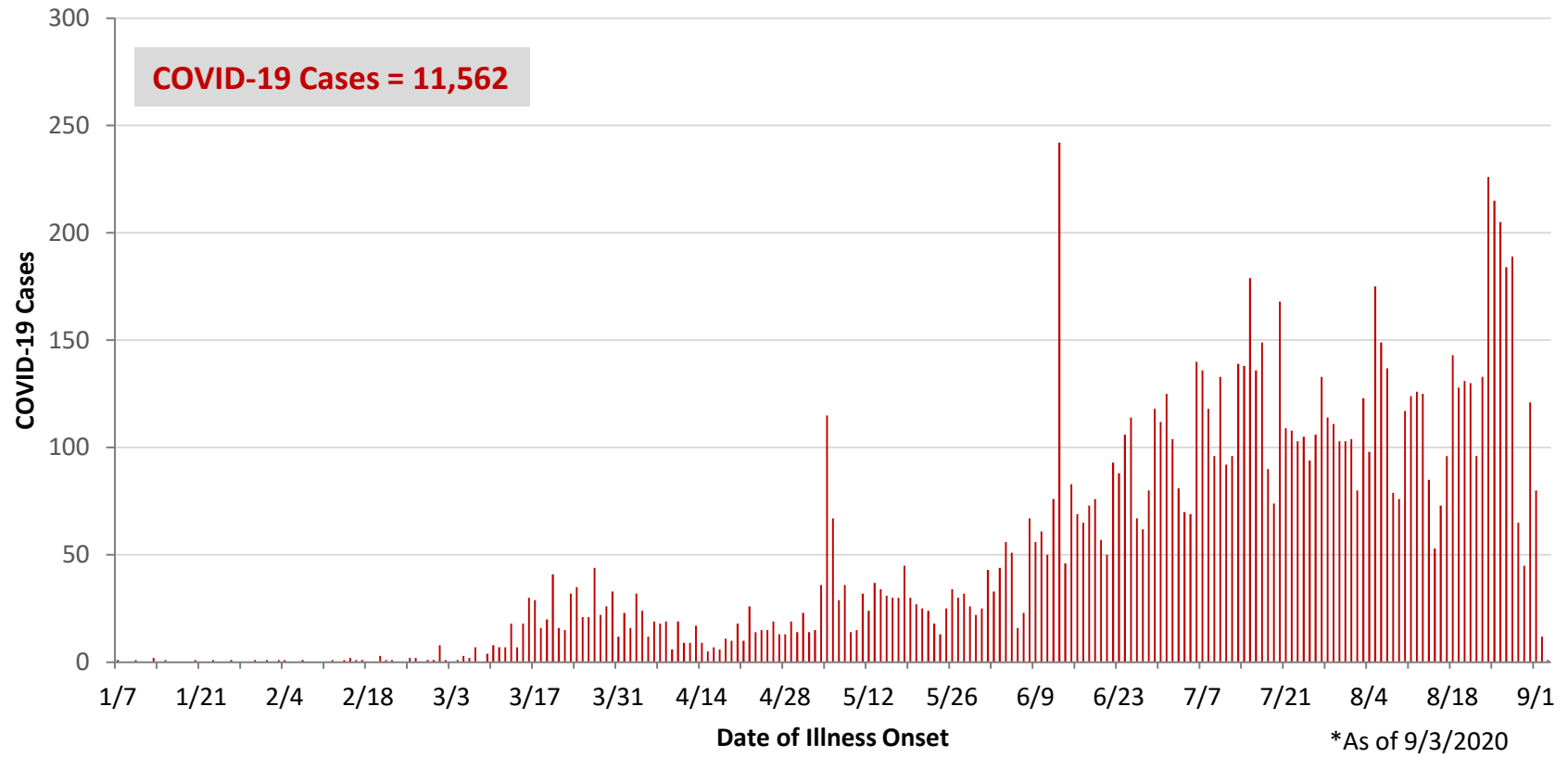


*As of 9/3/2020

WCO:

Preliminary COVID-19 Cases West Central Ohio, As of 9/3/2020		
County	# Cases	% Cases
Champaign	253	2%
Clark	1,467	13%
Darke	645	6%
Greene	1,035	9%
Miami	1,099	10%
Montgomery	6,309	55%
Preble	364	3%
Shelby	390	3%
Total	11,562	100%
Sex		
Sex	# Cases	% Cases
Female	6,335	55%
Male	5,048	44%
Unknown	179	2%
Total	11,562	100%
Age Group		
Age Group	# Cases	% Cases
0-19	1,490	13%
20-29	2,538	22%
30-39	1,644	14%
40-49	1,466	13%
50-59	1,592	14%
60-69	1,240	11%
70-79	867	7%
80+	725	6%
Total	11,562	100%
Hospitalized	1,265	10.9%
Deaths	273	2.4%
Age Group		
Age Group	Deaths	% of Deaths
0-19	1	0%
20-29	3	1%
30-39	4	1%
40-49	5	2%
50-59	16	6%
60-69	42	15%
70-79	60	22%
80+	142	52%
Total	273	100%

**PRELIMINARY COVID-19 Cases by Date of Illness Onset
West Central Ohio, 1/7/20 - 9/3/20***



Montgomery County:

Preliminary COVID-19 Cases Montgomery County, As of 9/3/2020		
Sex	# Cases	% Cases
Female	3,517	56%
Male	2,726	43%
Unknown	66	1%
Total	6,309	100%
Age Group		
Age Group	# Cases	% Cases
0-19	984	16%
20-29	1,538	24%
30-39	875	14%
40-49	785	12%
50-59	801	13%
60-69	628	10%
70-79	403	6%
80+	294	5%
Unknown	1	0%
Total	6,309	100%
Hospitalized	757	12.0%
Deaths	133	2.1%
Age Group	Deaths	% of Deaths
0-19	1	1%
20-29	3	2%
30-39	3	2%
40-49	5	4%
50-59	10	8%
60-69	24	18%
70-79	32	24%
80+	55	41%
Total	133	100%

Age Group	Hospitalizations	% of Age Group Cases
0-19	28	2.8%
20-29	41	2.7%
30-39	65	7.4%
40-49	81	10.3%
50-59	140	17.5%
60-69	164	26.1%
70-79	143	35.5%
80+	95	32.3%
Total	757	12.0%

Source: Ohio Disease Reporting System, ODH

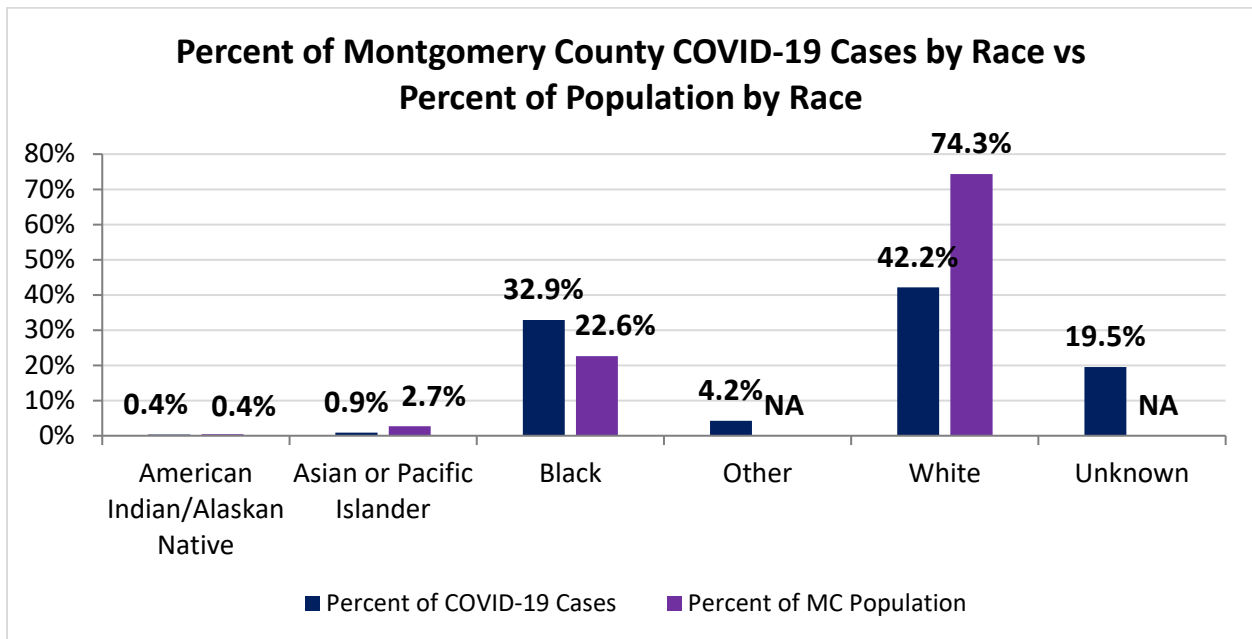
Note. All rates are per 100,000 population.

Montgomery County COVID-19 Cases by Race As of 9/3/20				
Race	Count	Percent	Case Rate	Rate Interpretation**
American Indian/Alaskan Native (AI/AN)*	23	0.4%	1,070.8	1 in 93
Asian	57	0.9%	400.6	1 in 250
Black	2,040	32.9%	1,694.9	1 in 59
Other	261	4.2%	NA	NA
White	2,618	42.2%	661.8	1 in 151
Unknown	1,211	19.5%	NA	NA
Total	6,210	100%	1,166.6	1 in 86

*Note. AI/ANs account for 0.4% of Montgomery County's population, and therefore, rates for this population will be large and may be misleading.

**Rate interpretation represents the number of cases for the given population.

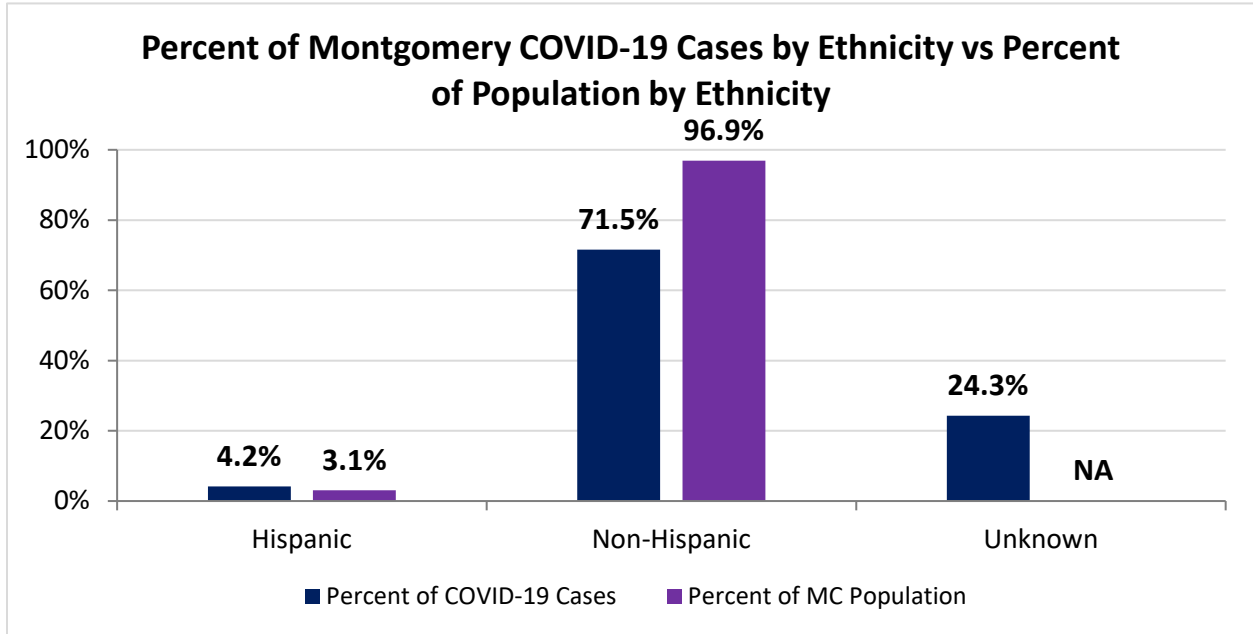
Example - there is a total of 1 case for every 86 Montgomery County residents.



Montgomery County COVID-19 Deaths by Race as of 9/3/2020		
Race	Count	Death Rate
American Indian/Alaskan Native	1	46.6
Asian or Pacific Islander	2	14.1
Black	51	42.4
Other	1	NA
White	84	21.2
Unknown	1	NA
Total	140	26.3

Montgomery County COVID-19 Cases by Ethnicity As of 9/3/20				
Ethnicity	Count	Percent	Case Rate	Rate Interpretation**
Hispanic	258	4.2%	1,567.4	1 in 64
Non-Hispanic	4,443	71.5%	861.3	1 in 116
Unknown	1,509	24.3%	NA	NA
Total	6,210	100%	1,166.6	1 in 86

**Rate interpretation represents the number of cases for the given population.
 Example - there is a total of 1 case for every 86 Montgomery County residents.

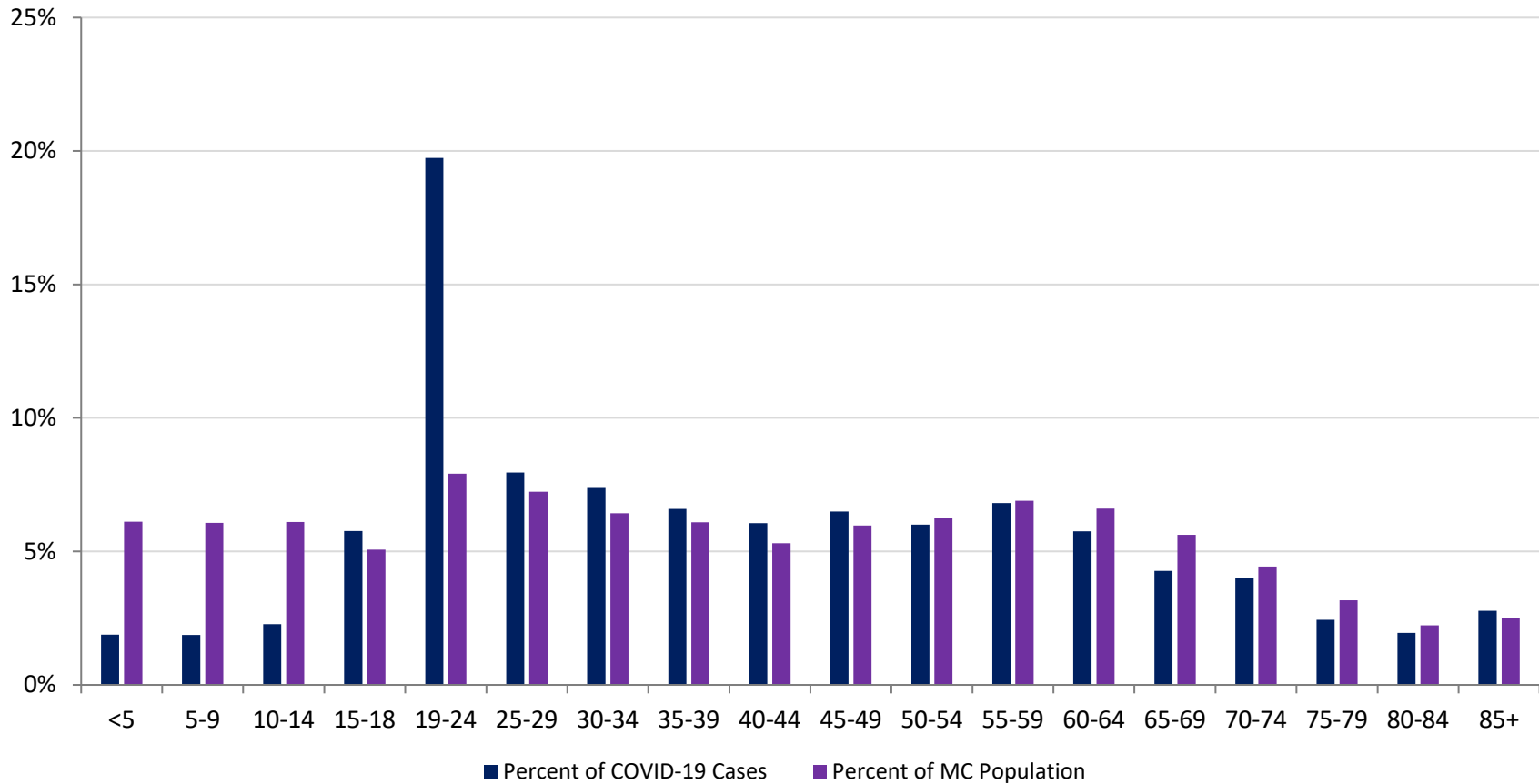


Montgomery County COVID-19 Cases by Health Care Worker Status As of 9/3/20		
Status	#	%
Health Care Worker	582	9.4%
Non-Health Care Worker	3,307	53.3%
Unknown	2,321	37.4%
Total	6,210	100%

Montgomery County COVID-19 Cases Age Range As of 9/3/20	
Stat	Age in Years
Age Range	<1 - 104
Average Age	40.4
Median Age	37.0

Montgomery County COVID-19 Cases by Age Group As of 9/3/20				
Age Group	# Cases	Case Rate	Percent of COVID-19 Cases	Percent of MC Population
<5	117	359.8	1.9%	6.1%
5-9	116	358.8	1.9%	6.1%
10-14	141	433.8	2.3%	6.1%
15-18	358	1,327.8	5.8%	5.1%
19-24	1,226	2,910.2	19.7%	7.9%
25-29	494	1,283.3	8.0%	7.2%
30-34	458	1,338.8	7.4%	6.4%
35-39	409	1,262.0	6.6%	6.1%
40-44	376	1,330.8	6.1%	5.3%
45-49	403	1,267.3	6.5%	6.0%
50-54	373	1,121.7	6.0%	6.2%
55-59	423	1,151.7	6.8%	6.9%
60-64	357	1,015.2	5.7%	6.6%
65-69	265	885.5	4.3%	5.6%
70-74	249	1,054.6	4.0%	4.4%
75-79	151	894.8	2.4%	3.2%
80-84	121	1,020.5	1.9%	2.2%
85+	172	1,291.7	2.8%	2.5%
Total	6,209	1,166.4	100%	100%

Percent of Montgomery County COVID-19 Cases by Age Group vs Percent of Population by Age Group

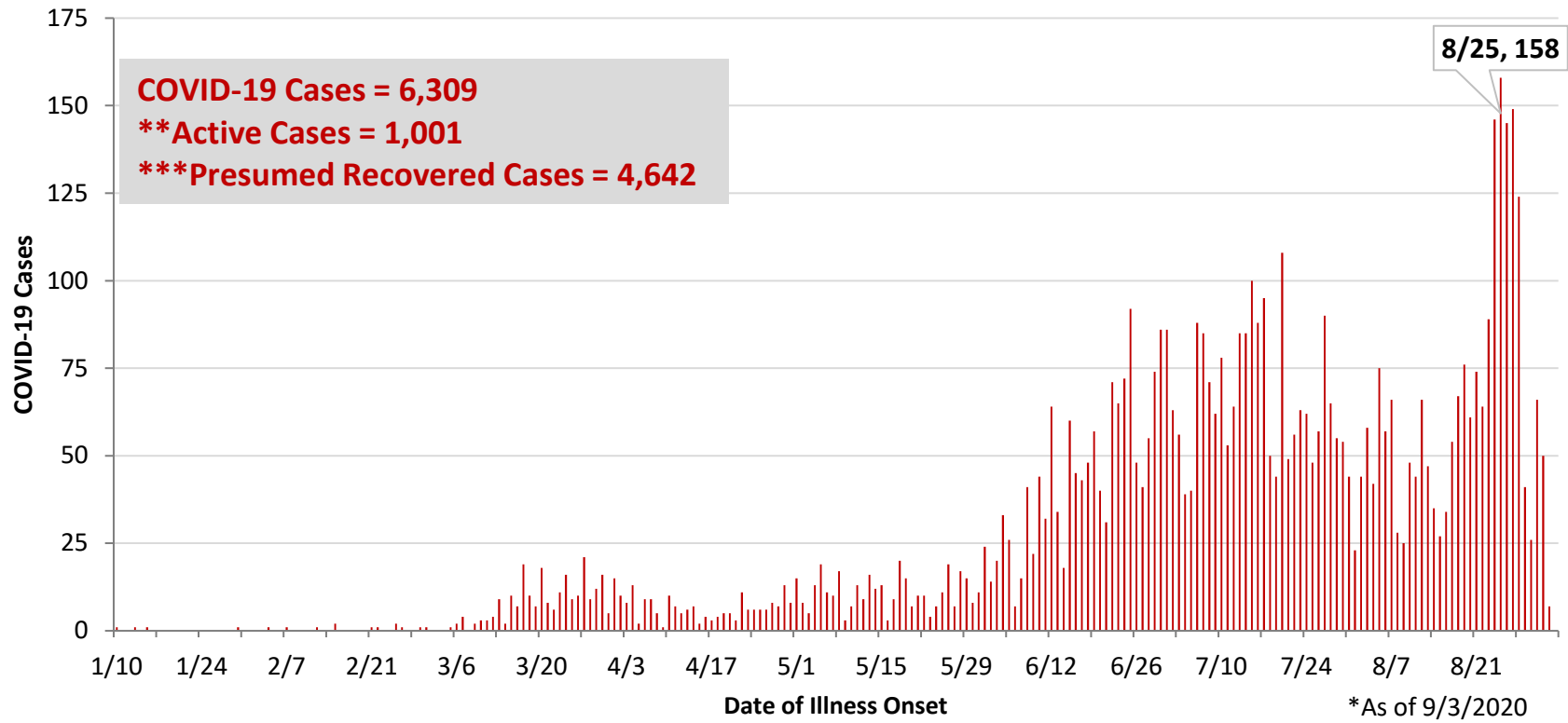


PRELIMINARY Montgomery County COVID-19 Cases by Age Group – Cases before 6/1 and June Cases vs July Cases As of 9/3/2020 (% change from June to July)

Age Group	# Cases <6/1	% of Cases <6/1	Case Rate <6/1	# Cases June	% of Cases June	Case Rate June	# Cases July	% of Cases July	Case Rate July	% Change # of Cases
<5	12	1.5%	36.9	39	3.0%	119.9	42	2.0%	129.2	7.7%
5-9	7	0.9%	21.7	30	2.3%	92.8	50	2.4%	154.7	66.7%
10-14	9	1.1%	27.7	29	2.2%	89.2	56	2.7%	172.3	93.1%
15-18	16	2.0%	59.3	60	4.6%	222.5	88	4.2%	326.4	46.7%
19-24	58	7.4%	137.7	155	11.8%	367.9	245	11.8%	581.6	58.1%
25-29	52	6.6%	135.1	150	11.4%	389.7	188	9.1%	488.4	25.3%
30-34	66	8.4%	192.9	133	10.1%	388.8	174	8.4%	508.6	30.8%
35-39	64	8.1%	197.5	124	9.4%	382.6	160	7.7%	493.7	29.0%
40-44	61	7.8%	215.9	84	6.4%	297.3	147	7.1%	520.3	75.0%
45-49	70	8.9%	220.1	94	7.1%	295.6	139	6.7%	437.1	47.9%
50-54	75	9.5%	225.5	75	5.7%	225.5	137	6.6%	412.0	82.7%
55-59	91	11.6%	247.8	79	6.0%	215.1	151	7.3%	411.1	91.1%
60-64	67	8.5%	190.5	68	5.2%	193.4	140	6.8%	398.1	105.9%
65-69	54	6.9%	180.5	47	3.6%	157.1	97	4.7%	324.1	106.4%
70-74	43	5.5%	182.1	45	3.4%	190.6	95	4.6%	402.4	111.1%
75-79	16	2.0%	94.8	34	2.6%	201.5	53	2.6%	314.1	55.9%
80-84	14	1.8%	118.1	29	2.2%	244.6	47	2.3%	396.4	62.1%
85+	12	1.5%	90.1	43	3.3%	322.9	65	3.1%	488.1	51.2%
Total	787	100%	147.8	1,318	100%	247.6	2,074	100%	389.6	57.4%

PRELIMINARY Montgomery County COVID-19 Cases by Age Group –July Cases vs August Cases As of 9/3/2020 (% change from July to August)							
Age Group	# Cases July	% of Cases July	Case Rate July	# Cases August	% of Cases August	Case Rate August	% Change # of Cases
<5	42	2.0%	129.2	24	1.2%	73.8	-42.9%
5-9	50	2.4%	154.7	28	1.4%	86.6	-44.0%
10-14	56	2.7%	172.3	45	2.3%	138.4	-19.6%
15-18	88	4.2%	326.4	190	9.5%	704.7	115.9%
19-24	245	11.8%	581.6	758	37.9%	1799.3	209.4%
25-29	188	9.1%	488.4	102	5.1%	265.0	-45.7%
30-34	174	8.4%	508.6	84	4.2%	245.5	-51.7%
35-39	160	7.7%	493.7	60	3.0%	185.1	-62.5%
40-44	147	7.1%	520.3	84	4.2%	297.3	-42.9%
45-49	139	6.7%	437.1	99	5.0%	311.3	-28.8%
50-54	137	6.6%	412.0	85	4.3%	255.6	-38.0%
55-59	151	7.3%	411.1	100	5.0%	272.3	-33.8%
60-64	140	6.8%	398.1	81	4.1%	230.3	-42.1%
65-69	97	4.7%	324.1	64	3.2%	213.9	-34.0%
70-74	95	4.6%	402.4	65	3.3%	275.3	-31.6%
75-79	53	2.6%	314.1	47	2.4%	278.5	-11.3%
80-84	47	2.3%	396.4	31	1.6%	261.4	-34.0%
85+	65	3.1%	488.1	52	2.6%	390.5	-20.0%
Total	2,074	100%	389.6	1,999	100%	375.5	-3.6%

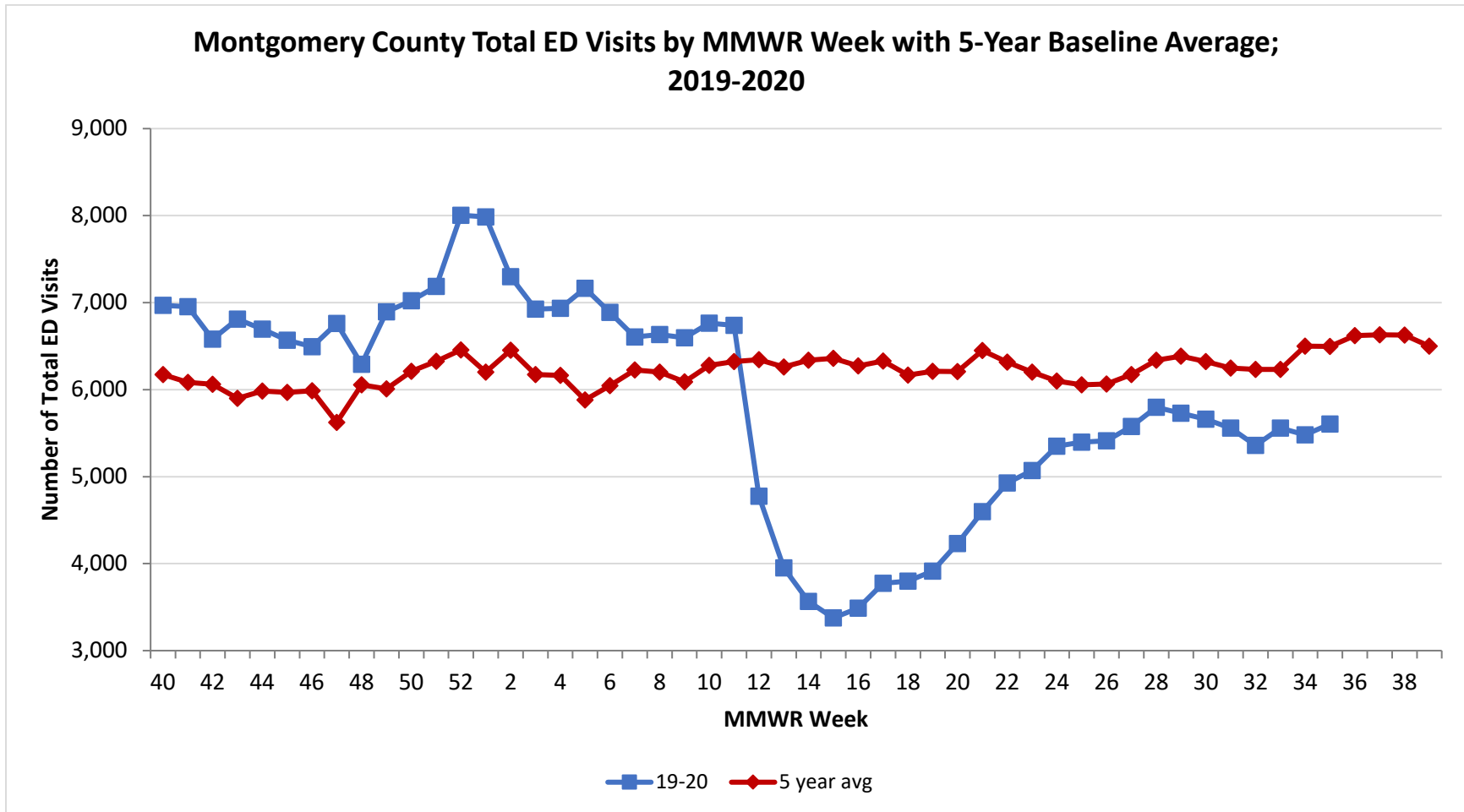
**PRELIMINARY COVID-19 Cases by Date of Illness Onset
Montgomery County, 1/10/20 - 9/3/20***



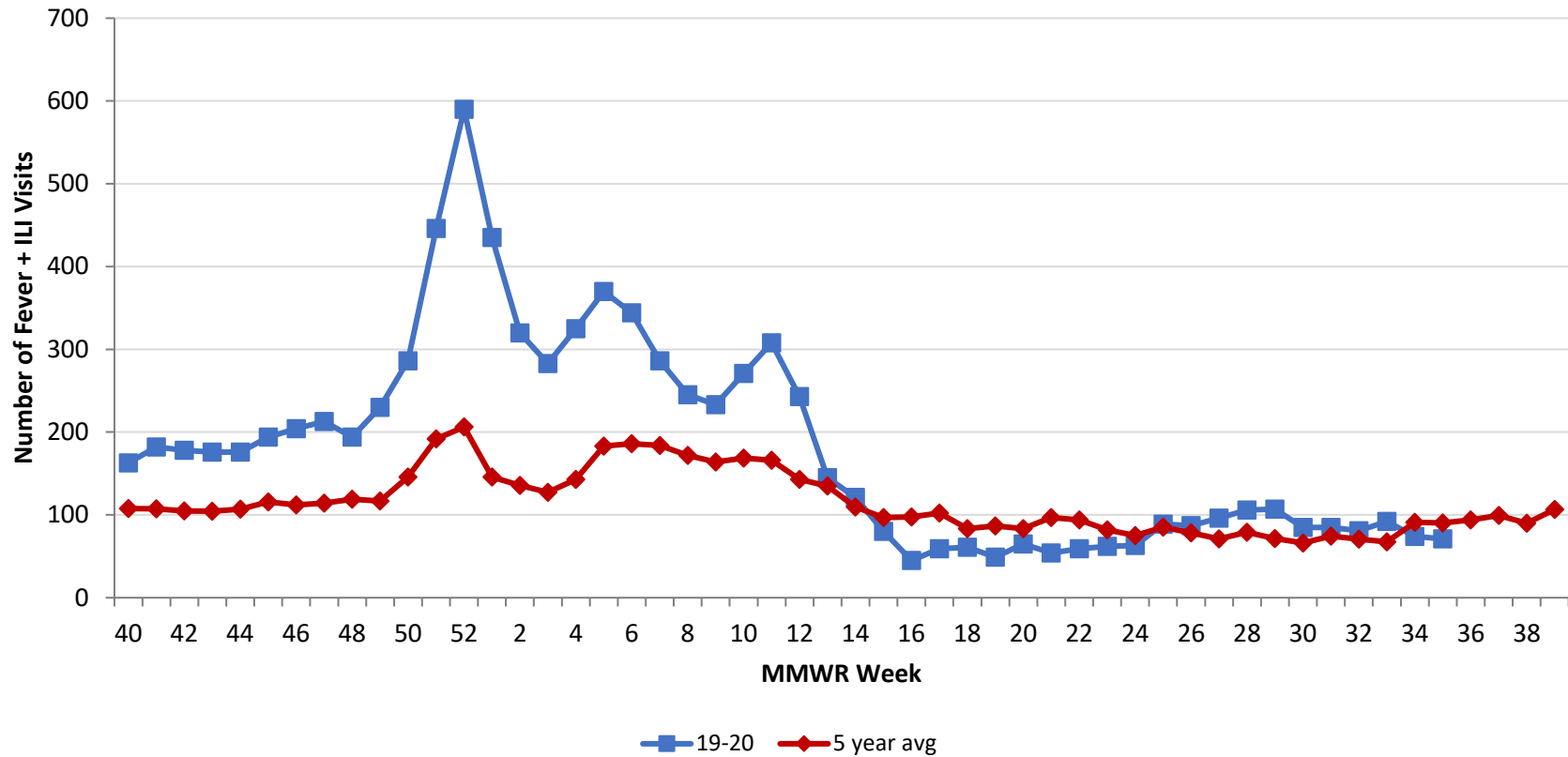
**Active cases are based on the reported illness onset date (using a 10-day window) of reported cases.

***Presumed recovered is defined as cases with a symptom onset date >21 days prior who are not deceased.

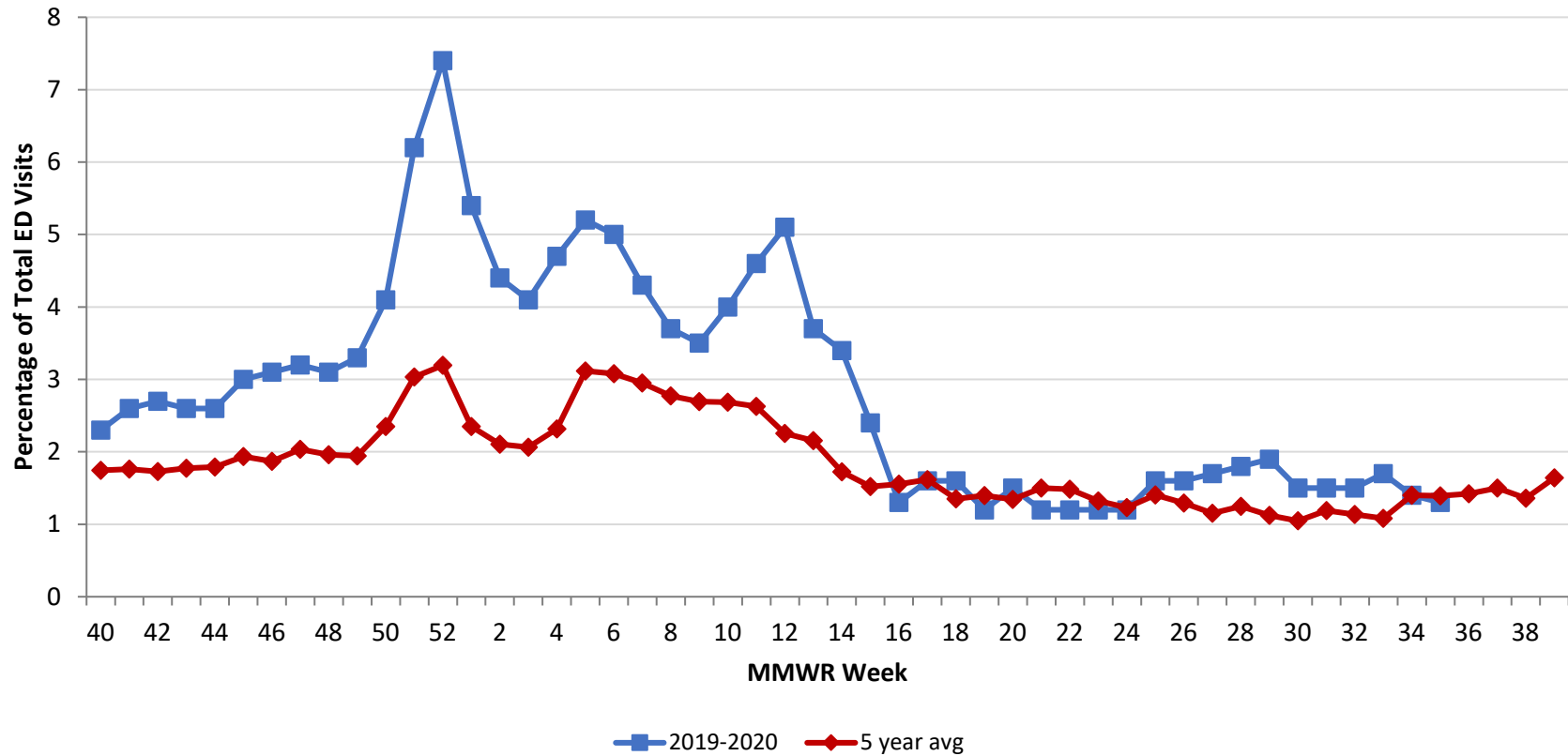
Source: EpiCenter Syndromic Surveillance, Health Monitoring Systems



Montgomery County Fever + ILI Specified ED Visits by MMWR Week with 5-Year Baseline Average; 2019-2020



**Montgomery County Fever + ILI Specified ED Visits (% of Total Visits) by MMWR Week
with 5-Year Baseline Average; 2019-2020**



# Total Visits		
MMWR Week	19-20	5-Year Average
52	8,005	6456.0
1	7,986	6200.8
2	7,297	6452.4
3	6,924	6172.9
4	6,935	6164.0
5	7,164	5881.8
6	6,888	6045.0
7	6,605	6226.8
8	6,633	6200.6
9	6,597	6088.2
10	6,763	6279.6
11	6,738	6321.6
12	4,775	6345.0
13	3,952	6259.8
14	3,565	6337.4
15	3,376	6360.6
16	3,489	6273.4
17	3,774	6327.8
18	3,798	6165.8
19	3,915	6209.8
20	4,231	6208.4
21	4,598	6,449.6
22	4,928	6,315.4
23	5,070	6,201.0
24	5,350	6,098.4
25	5,398	6,055.8
26	5,412	6,063.2
27	5,577	6,173.0
28	5,797	6,339.0
29	5,728	6384.6
30	5,661	6,322.0
31	5,557	6,247.2
32	5,359	6232.8
33	5,558	6,233.8
34	5,481	6,501.0
35	5,606	6,496.2

# Fever + ILI Visits		
MMWR Week	19-20	5-Year Average
52	590	206.2
1	435	145.8
2	320	135.8
3	283	127.4
4	325	142.8
5	370	183.2
6	344	186.2
7	286	183.8
8	245	171.8
9	233	164.0
10	271	168.6
11	308	166.2
12	243	143.0
13	145	134.8
14	121	109.4
15	80	96.8
16	45	97.6
17	59	102.4
18	61	83.4
19	49	86.8
20	65	83.4
21	54	96.8
22	59	93.8
23	62	82.0
24	63	75.0
25	89	85.2
26	87	78.4
27	96	71.2
28	106	79.2
29	107	71.6
30	85	66.2
31	85	74.2
32	81	70.8
33	92	67.4
34	74	91.0
35	71	90.4

% Fever + ILI Visits		
MMWR Week	19-20	5-Year Average
52	7.4	3.2
1	5.4	2.4
2	4.4	2.1
3	4.1	2.1
4	4.7	2.3
5	5.2	3.1
6	5	3.1
7	4.3	3.0
8	3.7	2.8
9	3.5	2.7
10	4	2.7
11	4.6	2.6
12	5.1	2.3
13	3.7	2.2
14	3.4	1.7
15	2.4	1.5
16	1.3	1.6
17	1.6	1.6
18	1.6	1.4
19	1.2	1.4
20	1.5	1.3
21	1.2	1.5
22	1.2	1.5
23	1.2	1.3
24	1.2	1.2
25	1.6	1.4
26	1.6	1.3
27	1.7	1.2
28	1.8	1.2
29	1.9	1.1
30	1.5	1.0
31	1.5	1.2
32	1.5	1.1
33	1.7	1.1
34	1.4	1.4
35	1.3	1.4