



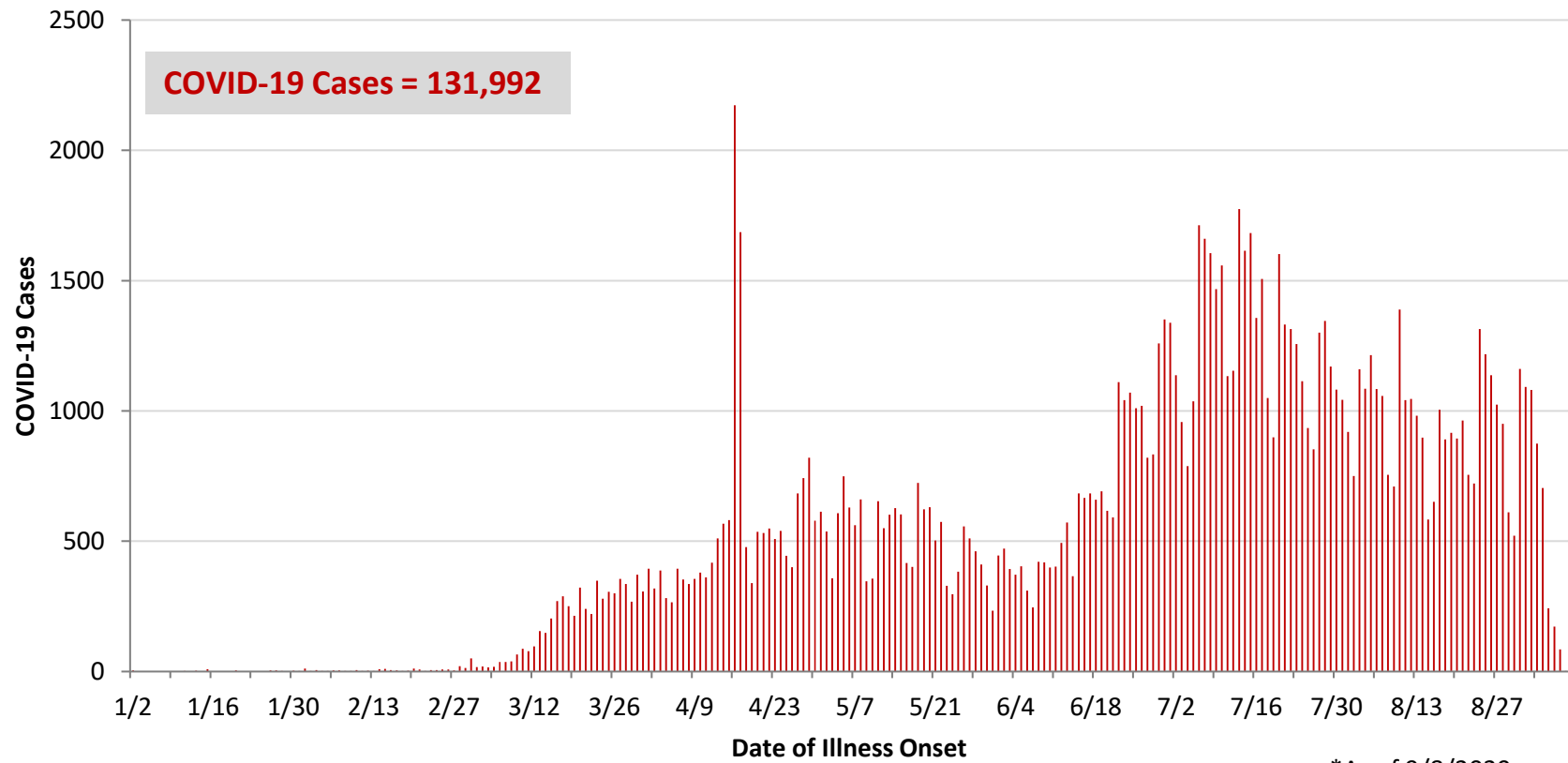
**Ohio, West Central Ohio (WCO), and Montgomery County COVID-19 Cases  
As of 9/8/20**

**Source:** The State of Ohio COVID-19 Dashboard, Ohio Department of Health

**Ohio:**

<b>Preliminary COVID-19 Cases Ohio, As of 9/8/2020</b>		
<b>Sex</b>	<b># Cases</b>	<b>% Cases</b>
Female	68,590	52%
Male	62,332	47%
Unknown	1,070	1%
<b>Total</b>	<b>131,992</b>	<b>100%</b>
<b>Age Group</b>		
<b>Age Group</b>	<b># Cases</b>	<b>% Cases</b>
0-19	14,639	11%
20-29	27,929	21%
30-39	20,501	16%
40-49	18,326	14%
50-59	18,949	14%
60-69	14,174	11%
70-79	8,983	7%
80+	8,391	6%
Unknown	100	0%
<b>Total</b>	<b>131,992</b>	<b>100%</b>
<b>Hospitalized</b>		
Hospitalized	13,967	10.6%
<b>Deaths</b>		
Deaths	4,298	3.3%
<b>Age Group</b>		
<b>Age Group</b>	<b>Deaths</b>	<b>% of Deaths</b>
0-19	2	0%
20-29	14	0%
30-39	31	1%
40-49	72	2%
50-59	256	6%
60-69	603	14%
70-79	1,066	25%
80+	2,254	52%
<b>Total</b>	<b>4,298</b>	<b>100%</b>

**PRELIMINARY COVID-19 Cases by Date of Illness Onset  
Ohio, 1/2/20 - 9/8/20\***

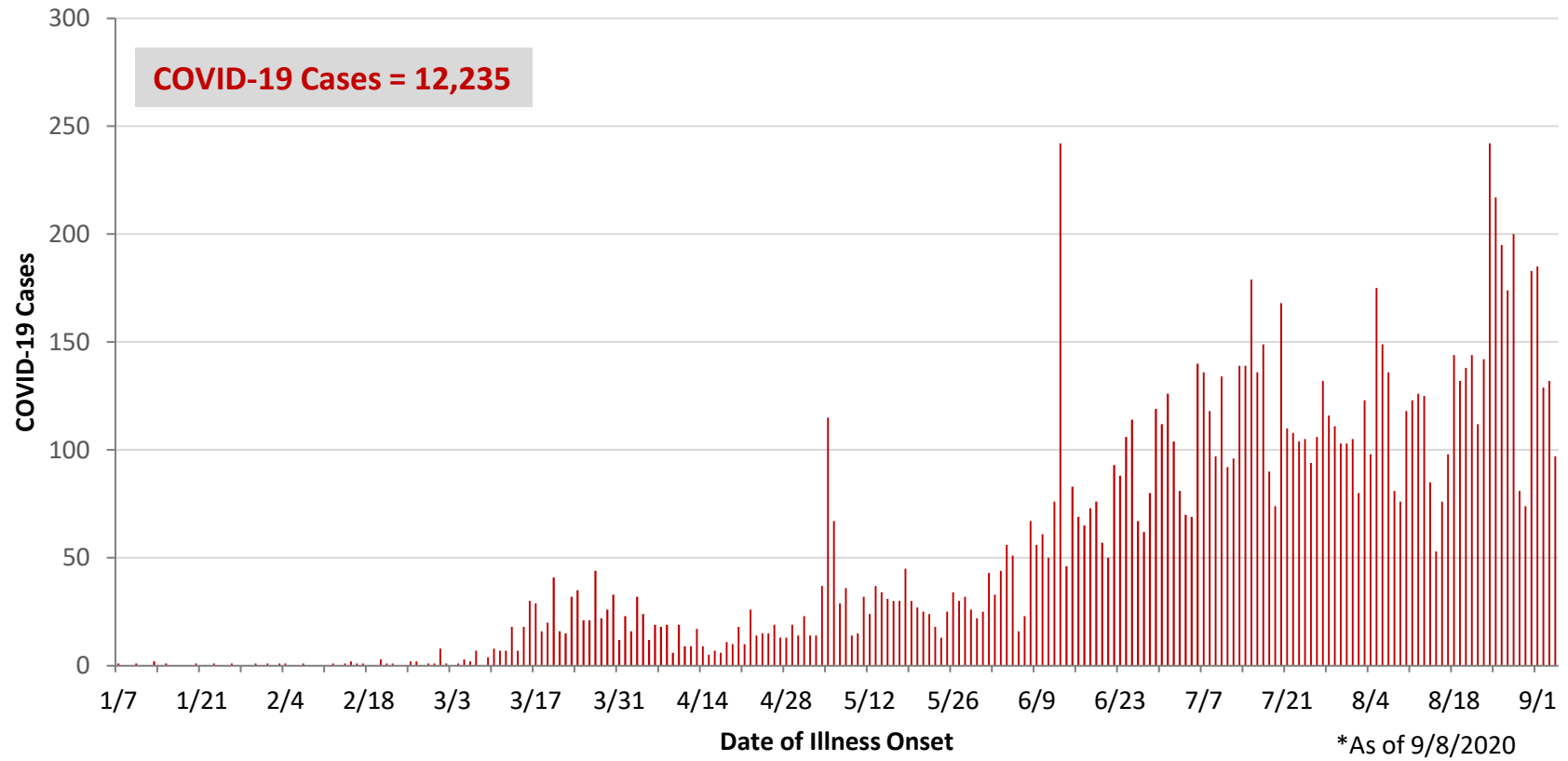


\*As of 9/8/2020

WCO:

Preliminary COVID-19 Cases West Central Ohio, As of 9/8/2020		
County	# Cases	% Cases
Champaign	260	2%
Clark	1,527	12%
Darke	676	6%
Greene	1,125	9%
Miami	1,149	9%
Montgomery	6,678	55%
Preble	381	3%
Shelby	439	4%
<b>Total</b>	<b>12,235</b>	<b>100%</b>
Sex		
Sex	# Cases	% Cases
Female	6,710	55%
Male	5,342	44%
Unknown	183	1%
<b>Total</b>	<b>12,235</b>	<b>100%</b>
Age Group		
Age Group	# Cases	% Cases
0-19	1,658	14%
20-29	2,731	22%
30-39	1,685	14%
40-49	1,528	12%
50-59	1,676	14%
60-69	1,278	10%
70-79	905	7%
80+	761	6%
Unknown	13	0%
<b>Total</b>	<b>12,235</b>	<b>100%</b>
Hospitalized	1,307	10.7%
Deaths	282	2.3%
Age Group		
Age Group	Deaths	% of Deaths
0-19	1	0%
20-29	3	1%
30-39	4	1%
40-49	5	2%
50-59	16	6%
60-69	42	15%
70-79	63	22%
80+	148	52%
<b>Total</b>	<b>282</b>	<b>100%</b>

**PRELIMINARY COVID-19 Cases by Date of Illness Onset  
West Central Ohio, 1/7/20 - 9/8/20\***



**Montgomery County:**

<b>Preliminary COVID-19 Cases Montgomery County, As of 9/8/2020</b>		
<b>Sex</b>	<b># Cases</b>	<b>% Cases</b>
Female	3,738	56%
Male	2,871	43%
Unknown	69	1%
<b>Total</b>	<b>6,678</b>	<b>100%</b>
<b>Age Group</b>		
<b>Age Group</b>	<b># Cases</b>	<b>% Cases</b>
0-19	1,095	16%
20-29	1,665	25%
30-39	889	13%
40-49	814	12%
50-59	839	13%
60-69	639	10%
70-79	425	6%
80+	311	5%
Unknown	1	0%
<b>Total</b>	<b>6,678</b>	<b>100%</b>
<b>Hospitalized</b>		
Hospitalized	785	11.8%
<b>Deaths</b>		
Deaths	134	2.0%
<b>Age Group</b>		
<b>Age Group</b>	<b>Deaths</b>	<b>% of Deaths</b>
0-19	1	1%
20-29	3	2%
30-39	3	2%
40-49	5	4%
50-59	10	7%
60-69	24	18%
70-79	33	25%
80+	55	41%
<b>Total</b>	<b>134</b>	<b>100%</b>

<b>Age Group</b>	<b>Hospitalizations</b>	<b>% of Age Group Cases</b>
0-19	28	2.6%
20-29	42	2.5%
30-39	66	7.4%
40-49	83	10.2%
50-59	145	17.3%
60-69	165	25.8%
70-79	153	36.0%
80+	103	33.1%
<b>Total</b>	<b>785</b>	<b>11.8%</b>

Source: Ohio Disease Reporting System, ODH

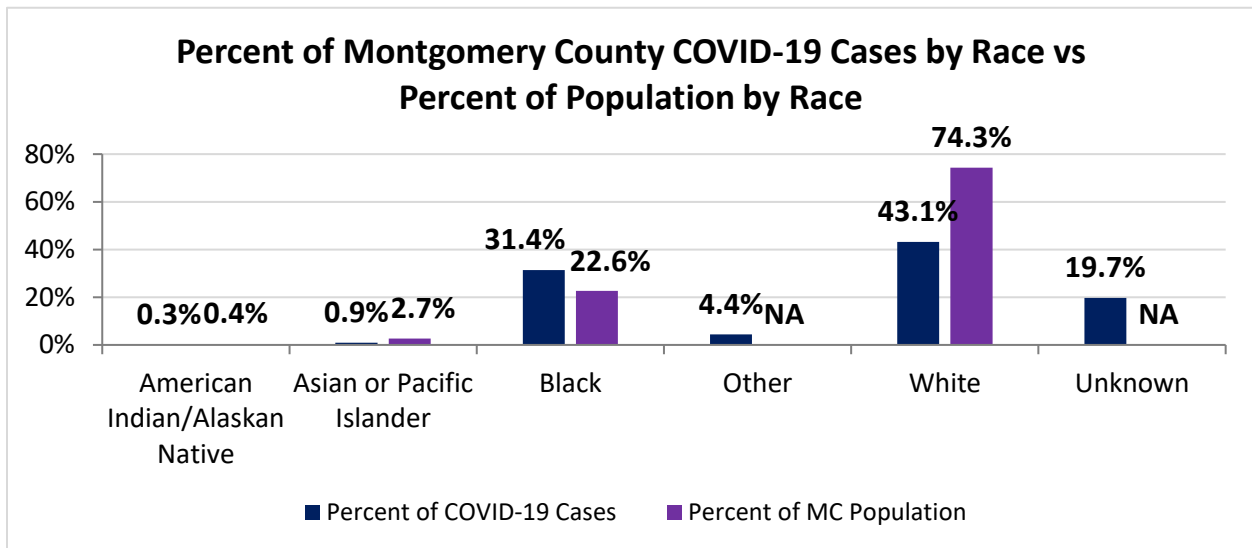
Note. All rates are per 100,000 population.

Montgomery County COVID-19 Cases by Race As of 9/6/20				
Race	Count	Percent	Case Rate	Rate Interpretation**
American Indian/Alaskan Native (AI/AN)*	23	0.3%	1,070.8	1 in 93
Asian	59	0.9%	414.6	1 in 241
Black	2,068	31.4%	1,718.2	1 in 58
Other	291	4.4%	NA	NA
White	2,838	43.1%	717.4	1 in 139
Unknown	1,299	19.7%	NA	NA
<b>Total</b>	<b>6,578</b>	<b>100%</b>	<b>1,235.7</b>	<b>1 in 81</b>

\*Note. AI/ANs account for 0.4% of Montgomery County's population, and therefore, rates for this population will be large and may be misleading.

\*\*Rate interpretation represents the number of cases for the given population.

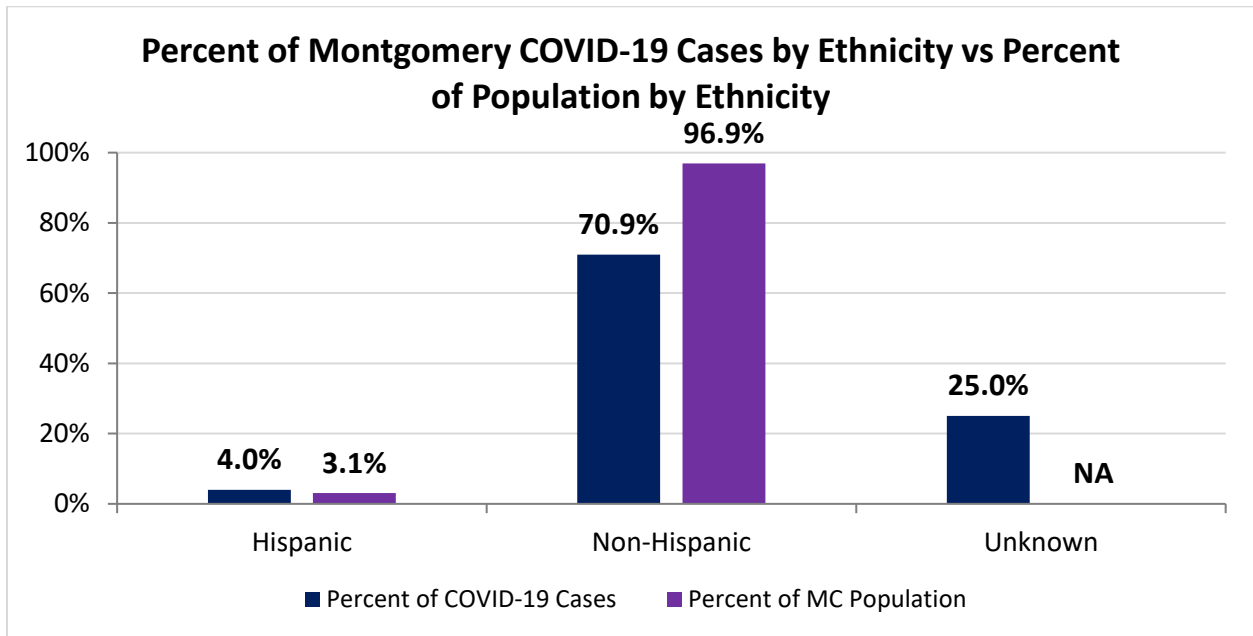
Example - there is a total of 1 case for every 118 Montgomery County residents.



Montgomery County COVID-19 Deaths by Race as of 9/6/2020		
Race	Count	Death Rate
American Indian/Alaskan Native	1	46.6
Asian or Pacific Islander	2	14.1
Black	51	42.4
Other	1	NA
White	83	21.0
Unknown	1	NA
<b>Total</b>	<b>139</b>	<b>26.1</b>

<b>Montgomery County COVID-19 Cases by Ethnicity As of 9/6/20</b>				
<b>Ethnicity</b>	<b>Count</b>	<b>Percent</b>	<b>Case Rate</b>	<b>Rate Interpretation**</b>
Hispanic	264	4.0%	1,603.9	1 in 62
Non-Hispanic	4,667	70.9%	904.7	1 in 110
Unknown	1,647	25.0%	NA	NA
<b>Total</b>	<b>6,578</b>	<b>100%</b>	<b>1,235.7</b>	<b>1 in 81</b>

\*\*Rate interpretation represents the number of cases for the given population.  
 Example - there is a total of 1 case for every 118 Montgomery County residents.



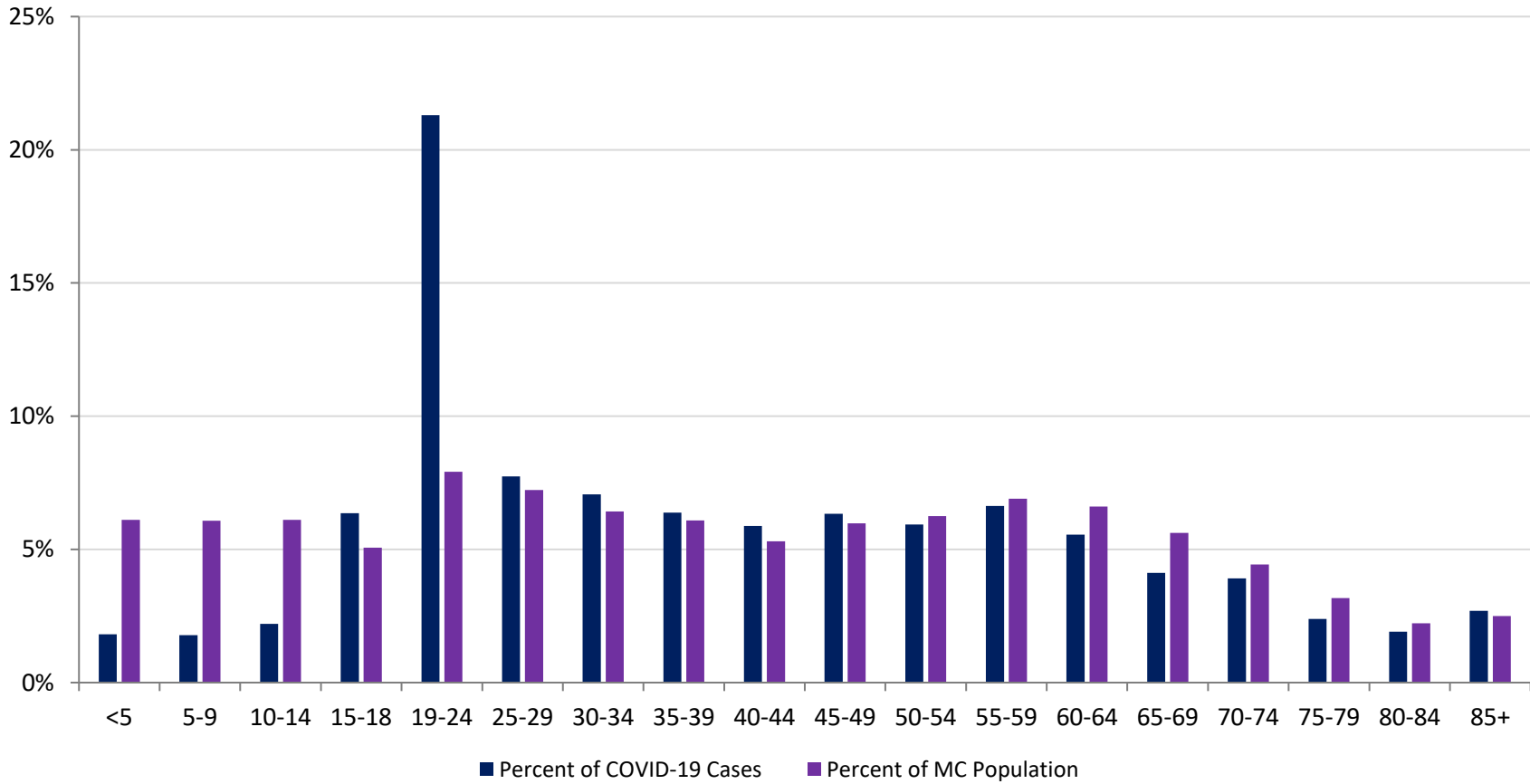
<b>Montgomery County COVID-19 Cases by Health Care Worker Status As of 9/6/20</b>		
<b>Status</b>	<b>#</b>	<b>%</b>
Health Care Worker	591	9.0%
Non-Health Care Worker	3,470	52.8%
Unknown	2,517	38.3%
<b>Total</b>	<b>6,578</b>	<b>100%</b>

<b>Montgomery County COVID-19 Cases Age Range As of 9/6/20</b>	
<b>Stat</b>	<b>Age in Years</b>
Age Range	<1 - 104
Average Age	39.8
Median Age	36.0

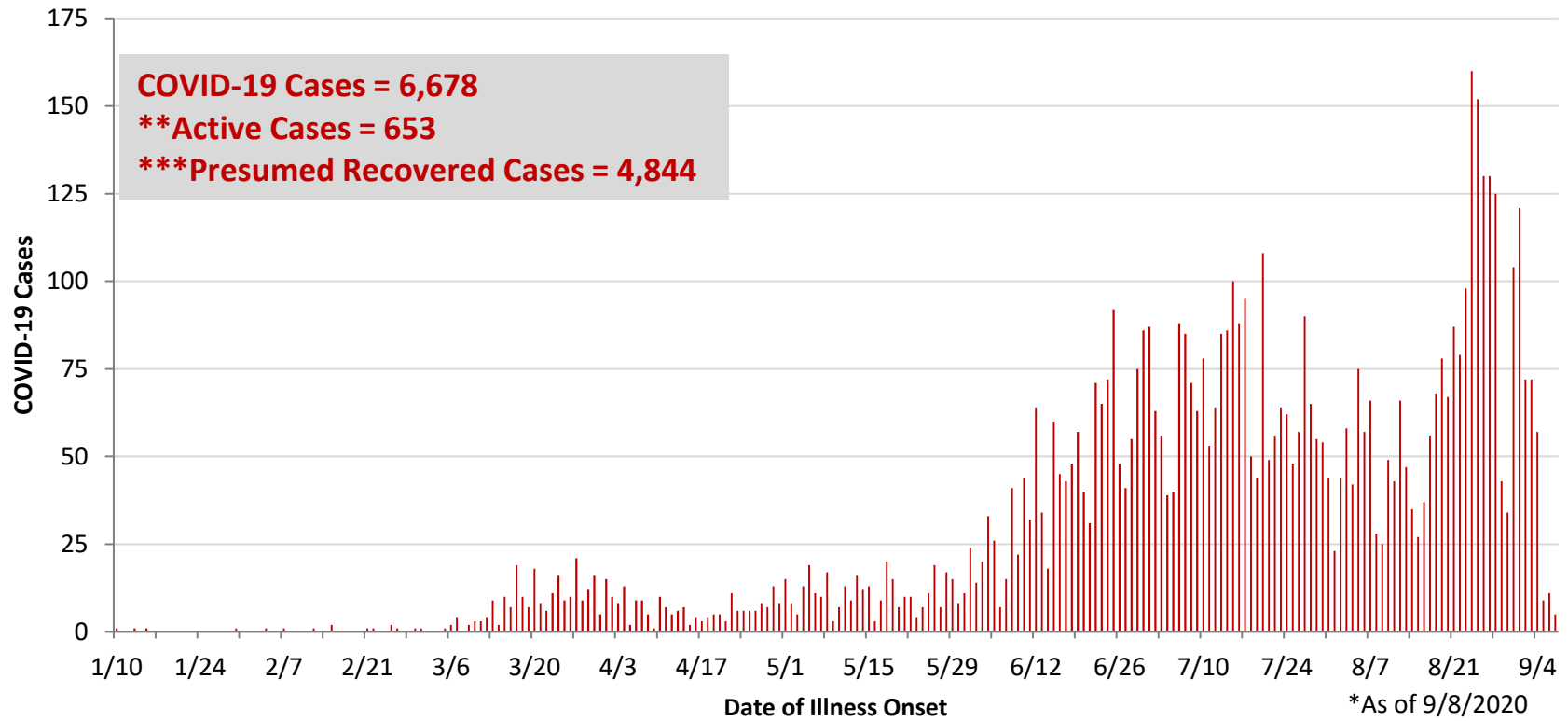
<b>Montgomery County COVID-19 Cases by Age Group As of 9/6/20</b>				
<b>Age Group</b>	<b># Cases</b>	<b>Case Rate</b>	<b>Percent of COVID-19 Cases</b>	<b>Percent of MC Population</b>
<5	119	366.0	1.8%	6.1%
5-9	117	361.9	1.8%	6.1%
10-14	145	446.1	2.2%	6.1%
15-18	418	1,550.4	6.4%	5.1%
19-24	1401	3,325.7	21.3%	7.9%
25-29	509	1,322.3	7.7%	7.2%
30-34	465	1,359.3	7.1%	6.4%
35-39	420	1,295.9	6.4%	6.1%
40-44	387	1,369.8	5.9%	5.3%
45-49	417	1,311.4	6.3%	6.0%
50-54	390	1,172.8	5.9%	6.2%
55-59	436	1,187.1	6.6%	6.9%
60-64	365	1,038.0	5.5%	6.6%
65-69	271	905.6	4.1%	5.6%
70-74	257	1,088.5	3.9%	4.4%
75-79	157	930.4	2.4%	3.2%
80-84	126	1,062.7	1.9%	2.2%
85+	177	1,329.2	2.7%	2.5%
Unknown	1	NA	NA	NA
<b>Total</b>	<b>6,578</b>	<b>1,235.5</b>	<b>100%</b>	<b>100%</b>



**Percent of Montgomery County COVID-19 Cases by Age Group vs Percent of Population by Age Group**



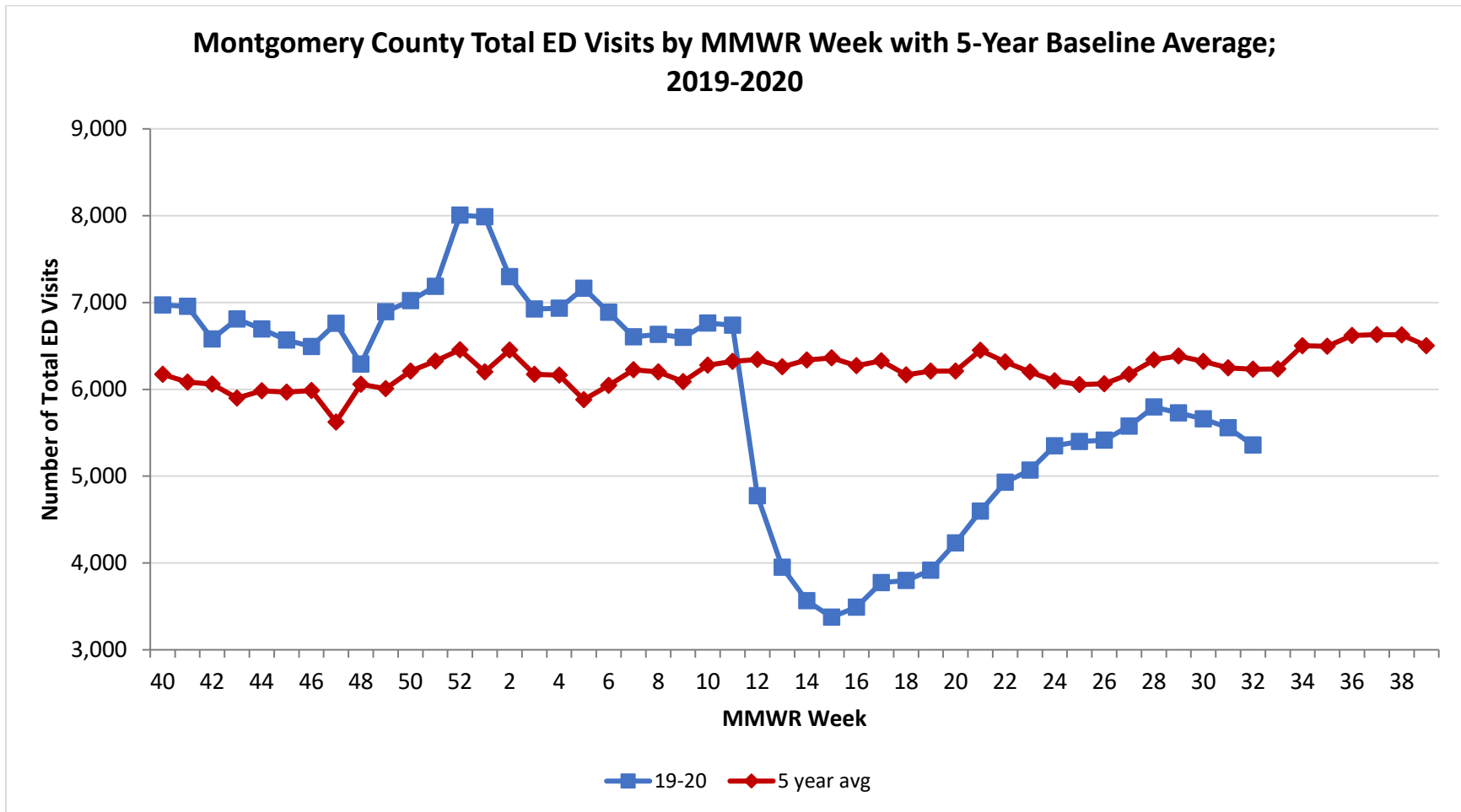
**PRELIMINARY COVID-19 Cases by Date of Illness Onset  
Montgomery County, 1/10/20 - 9/8/20\***



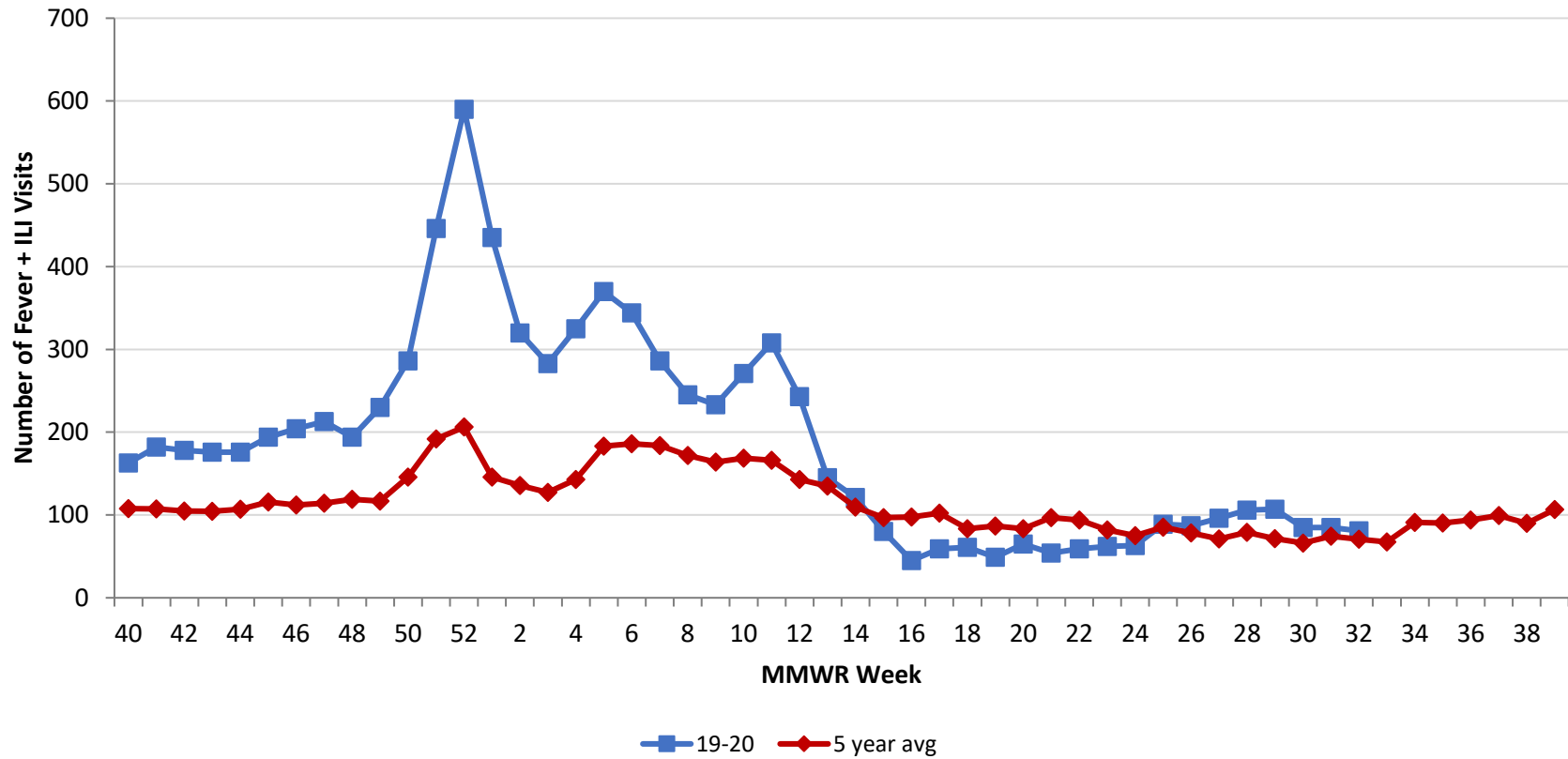
\*\* Active cases are based on the reported illness onset date (using a 10-day window) of reported cases.

\*\*\* Presumed recovered is defined as cases with a symptom onset date >21 days prior who are not deceased.

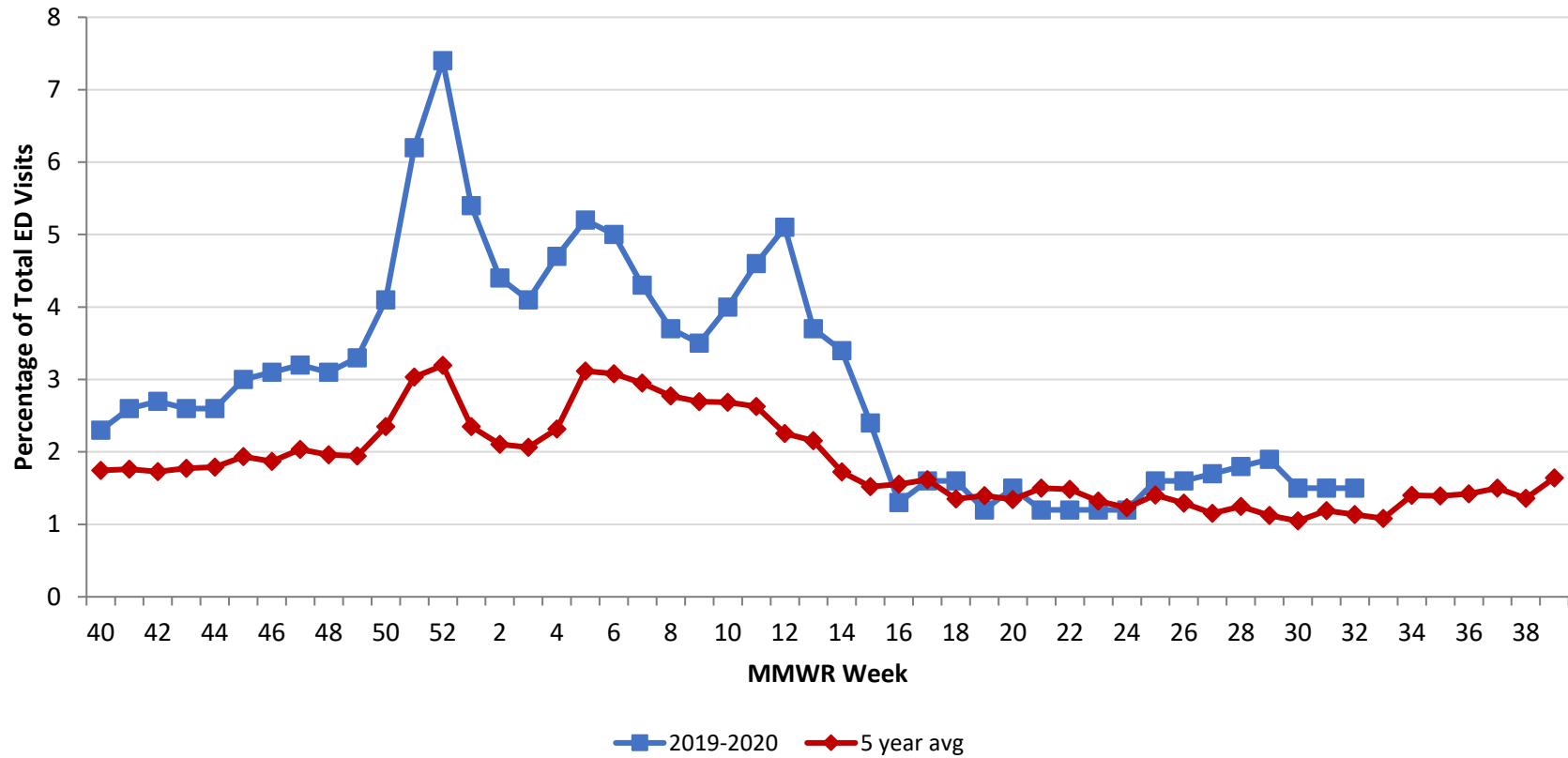
Source: EpiCenter Syndromic Surveillance, Health Monitoring Systems



Montgomery County Fever + ILI Specified ED Visits by MMWR Week with 5-Year Baseline Average; 2019-2020



**Montgomery County Fever + ILI Specified ED Visits (% of Total Visits) by MMWR Week with 5-Year Baseline Average; 2019-2020**



# Total Visits		
MMWR Week	19-20	5-Year Average
49	6,895	6008.0
50	7,022	6209.8
51	7,185	6324.4
52	8,005	6456.0
1	7,986	6200.8
2	7,297	6452.4
3	6,924	6172.9
4	6,935	6164.0
5	7,164	5881.8
6	6,888	6045.0
7	6,605	6226.8
8	6,633	6200.6
9	6,597	6088.2
10	6,763	6279.6
11	6,738	6321.6
12	4,775	6345.0
13	3,952	6259.8
14	3,565	6337.4
15	3,376	6360.6
16	3,489	6273.4
17	3,774	6327.8
18	3,798	6165.8
19	3,915	6209.8
20	4,231	6208.4
21	4,598	6,449.6
22	4,928	6,315.4
23	5,070	6,201.0
24	5,350	6,098.4
25	5,398	6,055.8
26	5,412	6,063.2
27	5,577	6,173.0
28	5,797	6,339.0
29	5,728	6384.6
30	5,661	6,322.0
31	5,557	6,247.2
32	5,359	6232.8

# Fever + ILI Visits		
MMWR Week	19-20	5-Year Average
49	230	116.8
50	286	145.8
51	446	191.8
52	590	206.2
1	435	145.8
2	320	135.8
3	283	127.4
4	325	142.8
5	370	183.2
6	344	186.2
7	286	183.8
8	245	171.8
9	233	164.0
10	271	168.6
11	308	166.2
12	243	143.0
13	145	134.8
14	121	109.4
15	80	96.8
16	45	97.6
17	59	102.4
18	61	83.4
19	49	86.8
20	65	83.4
21	54	96.8
22	59	93.8
23	62	82.0
24	63	75.0
25	89	85.2
26	87	78.4
27	96	71.2
28	106	79.2
29	107	71.6
30	85	66.2
31	85	74.2
32	81	70.8

% Fever + ILI Visits		
MMWR Week	19-20	5-Year Average
49	3.3	1.9
50	4.1	2.3
51	6.2	3.0
52	7.4	3.2
1	5.4	2.4
2	4.4	2.1
3	4.1	2.1
4	4.7	2.3
5	5.2	3.1
6	5	3.1
7	4.3	3.0
8	3.7	2.8
9	3.5	2.7
10	4	2.7
11	4.6	2.6
12	5.1	2.3
13	3.7	2.2
14	3.4	1.7
15	2.4	1.5
16	1.3	1.6
17	1.6	1.6
18	1.6	1.4
19	1.2	1.4
20	1.5	1.3
21	1.2	1.5
22	1.2	1.5
23	1.2	1.3
24	1.2	1.2
25	1.6	1.4
26	1.6	1.3
27	1.7	1.2
28	1.8	1.2
29	1.9	1.1
30	1.5	1.0
30	1.5	1.2
32	1.5	1.1

Delete This Page Once Converted to PDF