



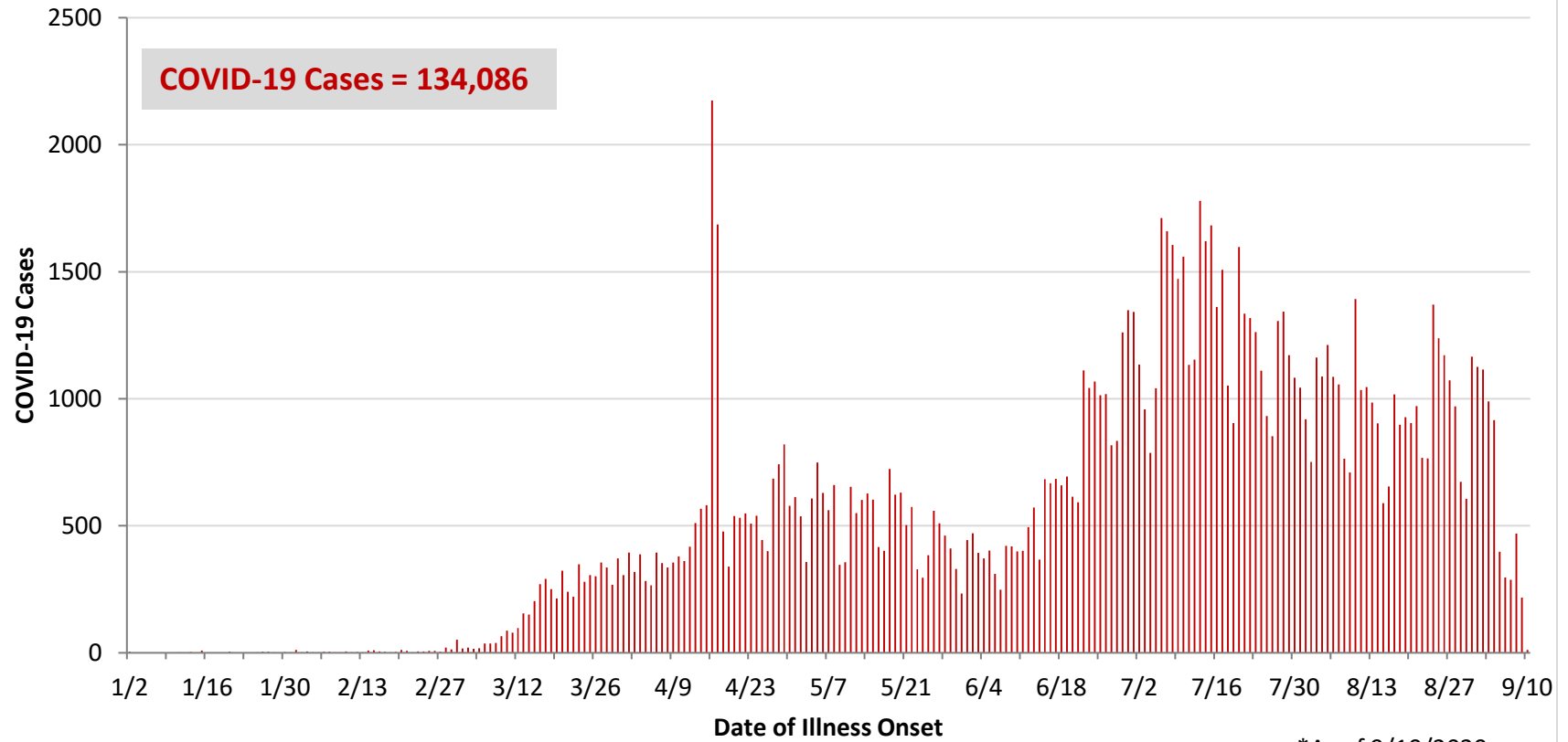
**Ohio, West Central Ohio (WCO), and Montgomery County COVID-19 Cases
As of 9/10/20**

Source: The State of Ohio COVID-19 Dashboard, Ohio Department of Health

Ohio:

Preliminary COVID-19 Cases Ohio, As of 9/10/2020		
Sex	# Cases	% Cases
Female	69,718	52%
Male	63,301	47%
Unknown	1,067	1%
Total	134,086	100%
Age Group		
Age Group	# Cases	% Cases
0-19	15,007	11%
20-29	28,590	21%
30-39	20,764	15%
40-49	18,515	14%
50-59	19,167	14%
60-69	14,324	11%
70-79	9,109	7%
80+	8,507	6%
Unknown	103	0%
Total	134,086	100%
Hospitalized		
Hospitalized	14,164	10.6%
Deaths		
Deaths	4,354	3.2%
Age Group		
Age Group	Deaths	% of Deaths
0-19	2	0%
20-29	14	0%
30-39	31	1%
40-49	72	2%
50-59	258	6%
60-69	607	14%
70-79	1,082	25%
80+	2,288	53%
Total	4,354	100%

**PRELIMINARY COVID-19 Cases by Date of Illness Onset
Ohio, 1/2/20 - 9/10/20***

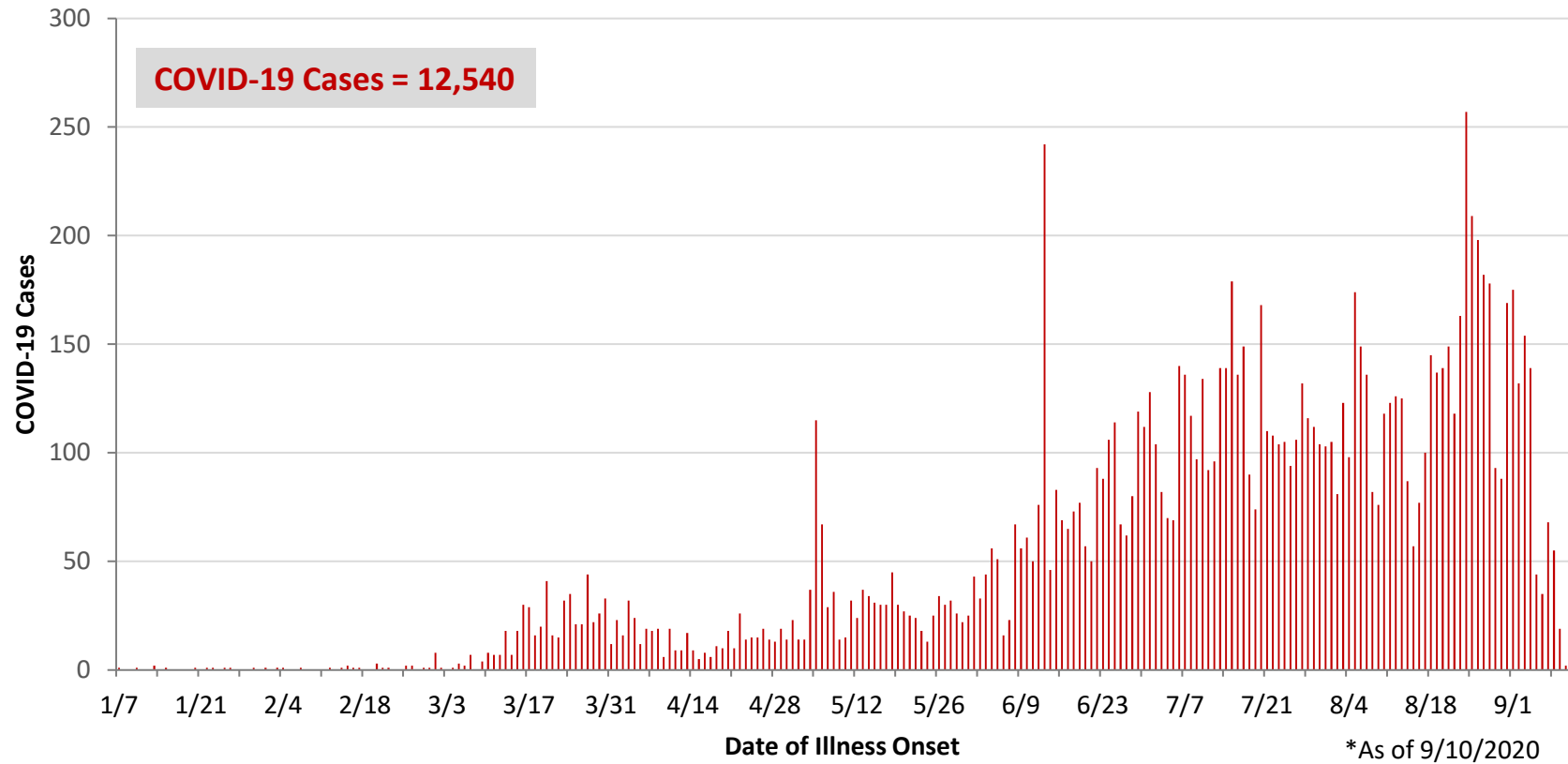


*As of 9/10/2020

WCO:

Preliminary COVID-19 Cases West Central Ohio, As of 9/10/2020		
County	# Cases	% Cases
Champaign	264	2%
Clark	1,565	12%
Darke	687	5%
Greene	1,149	9%
Miami	1,198	10%
Montgomery	6,824	54%
Preble	391	3%
Shelby	462	4%
Total	12,540	100%
Sex		
Sex	# Cases	% Cases
Female	6,889	55%
Male	5,472	44%
Unknown	179	1%
Total	12,540	100%
Age Group		
Age Group	# Cases	% Cases
0-19	1,717	14%
20-29	2,816	22%
30-39	1,728	14%
40-49	1,552	12%
50-59	1,711	14%
60-69	1,303	10%
70-79	925	7%
80+	788	6%
Total	12,540	100%
Hospitalized	1,342	10.7%
Deaths	297	2.4%
Age Group		
Age Group	Deaths	% of Deaths
0-19	1	0%
20-29	3	1%
30-39	4	1%
40-49	5	2%
50-59	16	5%
60-69	42	14%
70-79	69	23%
80+	157	53%
Total	297	100%

**PRELIMINARY COVID-19 Cases by Date of Illness Onset
West Central Ohio, 1/7/20 - 9/10/20***



Montgomery County:

Preliminary COVID-19 Cases Montgomery County, As of 9/10/2020		
Sex	# Cases	% Cases
Female	3,817	56%
Male	2,940	43%
Unknown	67	1%
Total	6,824	100%
Age Group		
Age Group	# Cases	% Cases
0-19	1,129	17%
20-29	1,704	25%
30-39	912	13%
40-49	825	12%
50-59	850	12%
60-69	651	10%
70-79	435	6%
80+	317	5%
Unknown	1	0%
Total	6,824	100%
Hospitalized		
Hospitalized	808	11.8%
Deaths		
Deaths	140	2.1%
Age Group		
Age Group	Deaths	% of Deaths
0-19	1	1%
20-29	3	2%
30-39	3	2%
40-49	5	4%
50-59	10	7%
60-69	24	17%
70-79	36	26%
80+	58	41%
Total	140	100%

Age Group	Hospitalizations	% of Age Group Cases
0-19	30	2.7%
20-29	45	2.6%
30-39	67	7.3%
40-49	84	10.2%
50-59	147	17.3%
60-69	168	25.8%
70-79	159	36.6%
80+	108	34.1%
Total	808	11.8%

Source: Ohio Disease Reporting System, ODH

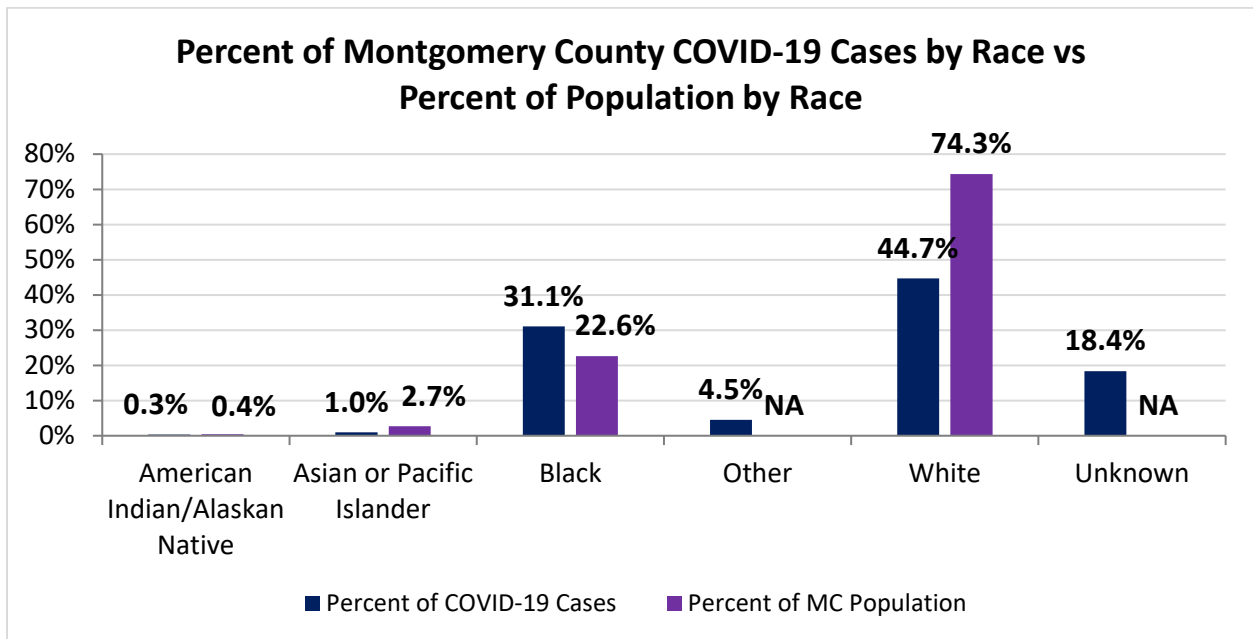
Note. All rates are per 100,000 population.

Montgomery County COVID-19 Cases by Race As of 9/10/20				
Race	Count	Percent	Case Rate	Rate Interpretation**
American Indian/Alaskan Native (AI/AN)*	22	0.3%	1,024.2	1 in 98
Asian	65	1.0%	456.8	1 in 219
Black	2,104	31.1%	1,748.1	1 in 57
Other	308	4.5%	NA	NA
White	3,029	44.7%	765.7	1 in 131
Unknown	1,244	18.4%	NA	NA
Total	6,772	100%	1,272.1	1 in 79

*Note. AI/ANs account for 0.4% of Montgomery County's population, and therefore, rates for this population will be large and may be misleading.

**Rate interpretation represents the number of cases for the given population.

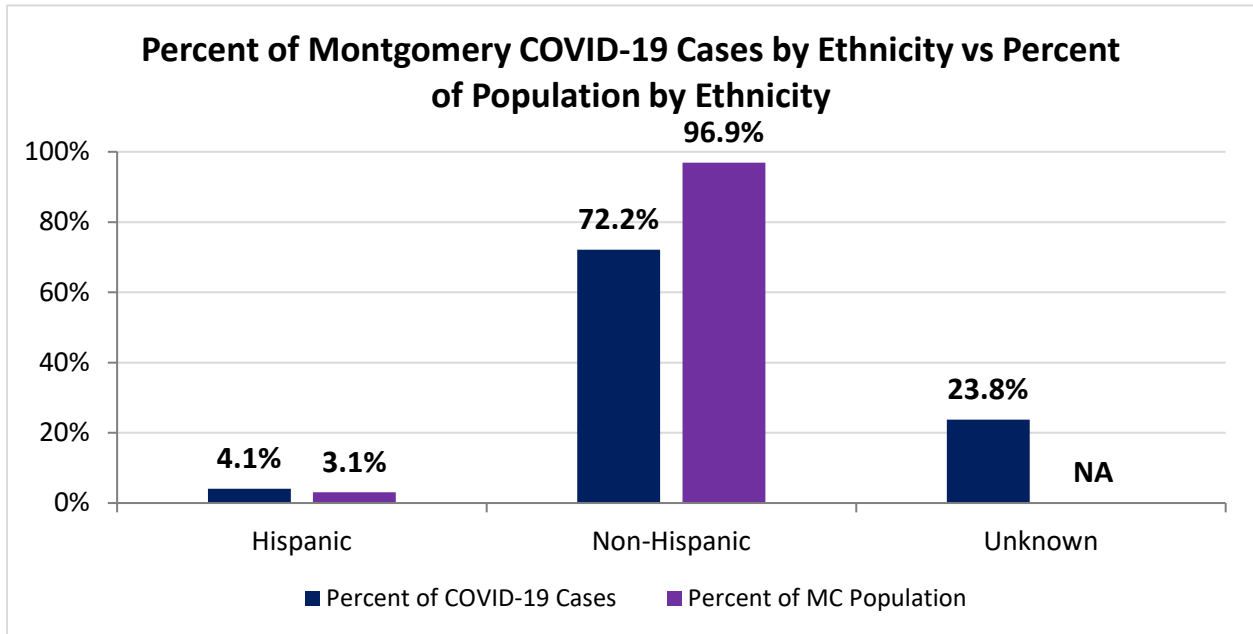
Example - there is a total of 1 case for every 79 Montgomery County residents.



Montgomery County COVID-19 Deaths by Race as of 9/10/2020		
Race	Count	Death Rate
American Indian/Alaskan Native	1	46.6
Asian or Pacific Islander	3	21.1
Black	53	44.0
Other	1	NA
White	83	21.0
Unknown	0	NA
Total	141	26.5

Montgomery County COVID-19 Cases by Ethnicity As of 9/10/20				
Ethnicity	Count	Percent	Case Rate	Rate Interpretation**
Hispanic	276	4.1%	1,676.8	1 in 60
Non-Hispanic	4,887	72.2%	947.3	1 in 106
Unknown	1,609	23.8%	NA	NA
Total	6,772	100%	1,272.1	1 in 79

**Rate interpretation represents the number of cases for the given population.
 Example - there is a total of 1 case for every 79 Montgomery County residents.

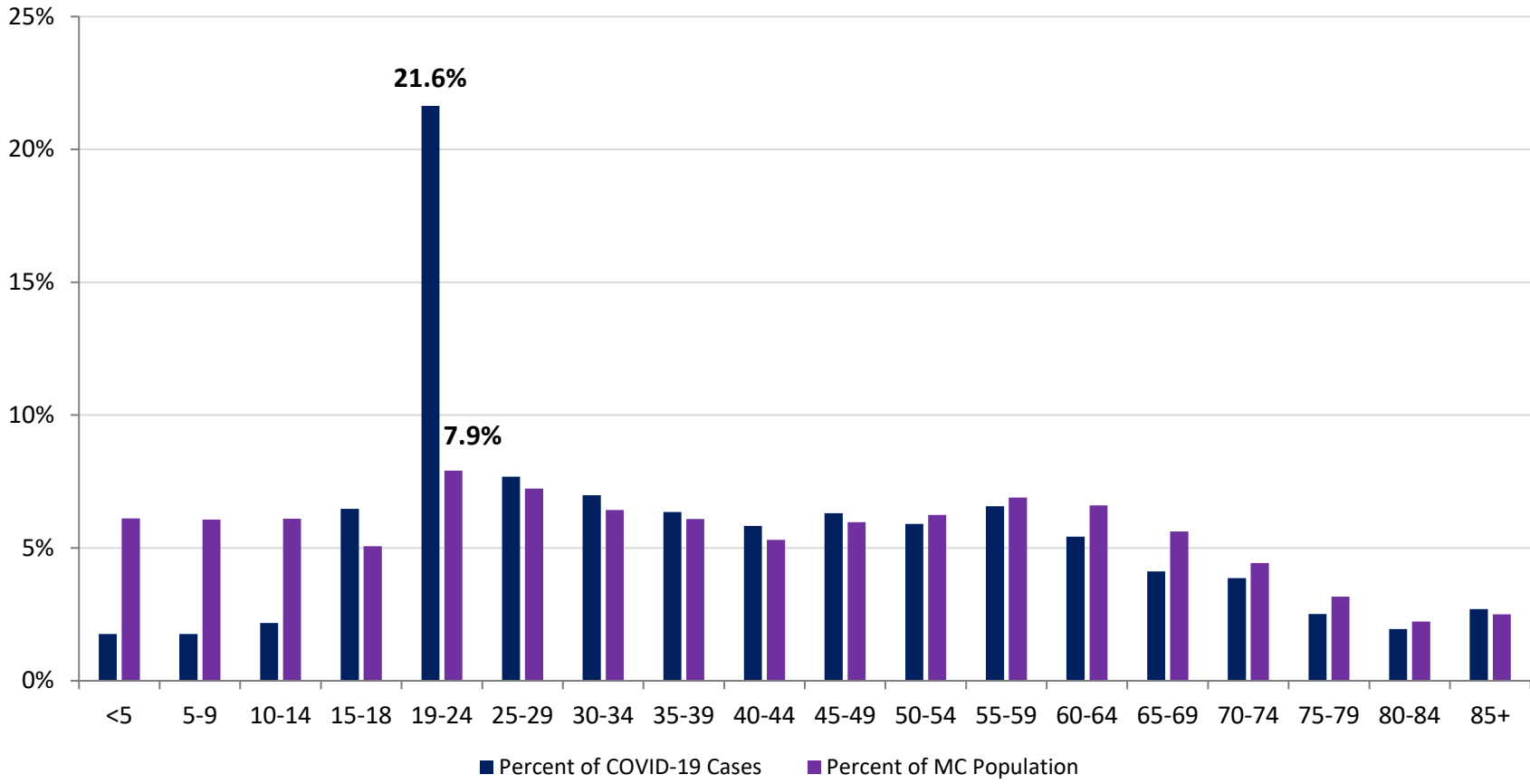


Montgomery County COVID-19 Cases by Health Care Worker Status As of 9/10/20		
Status	#	%
Health Care Worker	606	8.9%
Non-Health Care Worker	3,682	54.4%
Unknown	2,484	36.7%
Total	6,772	100%

Montgomery County COVID-19 Cases Age Range As of 9/10/20	
Stat	Age in Years
Age Range	<1 - 104
Average Age	39.8
Median Age	36.0

Montgomery County COVID-19 Cases by Age Group As of 9/10/20				
Age Group	# Cases	Case Rate	Percent of COVID-19 Cases	Percent of MC Population
<5	119	366.0	1.8%	6.1%
5-9	119	368.1	1.8%	6.1%
10-14	147	452.2	2.2%	6.1%
15-18	438	1,624.6	6.5%	5.1%
19-24	1465	3,477.6	21.6%	7.9%
25-29	520	1,350.9	7.7%	7.2%
30-34	473	1,382.7	7.0%	6.4%
35-39	430	1,326.8	6.4%	6.1%
40-44	395	1,398.1	5.8%	5.3%
45-49	427	1,342.8	6.3%	6.0%
50-54	400	1,202.9	5.9%	6.2%
55-59	445	1,211.6	6.6%	6.9%
60-64	367	1,043.7	5.4%	6.6%
65-69	279	932.3	4.1%	5.6%
70-74	262	1,109.7	3.9%	4.4%
75-79	170	1,007.4	2.5%	3.2%
80-84	132	1,113.3	1.9%	2.2%
85+	183	1,374.3	2.7%	2.5%
Total	6,771	1,272.0	100%	100%

Percent of Montgomery County COVID-19 Cases by Age Group vs Percent of Population by Age Group

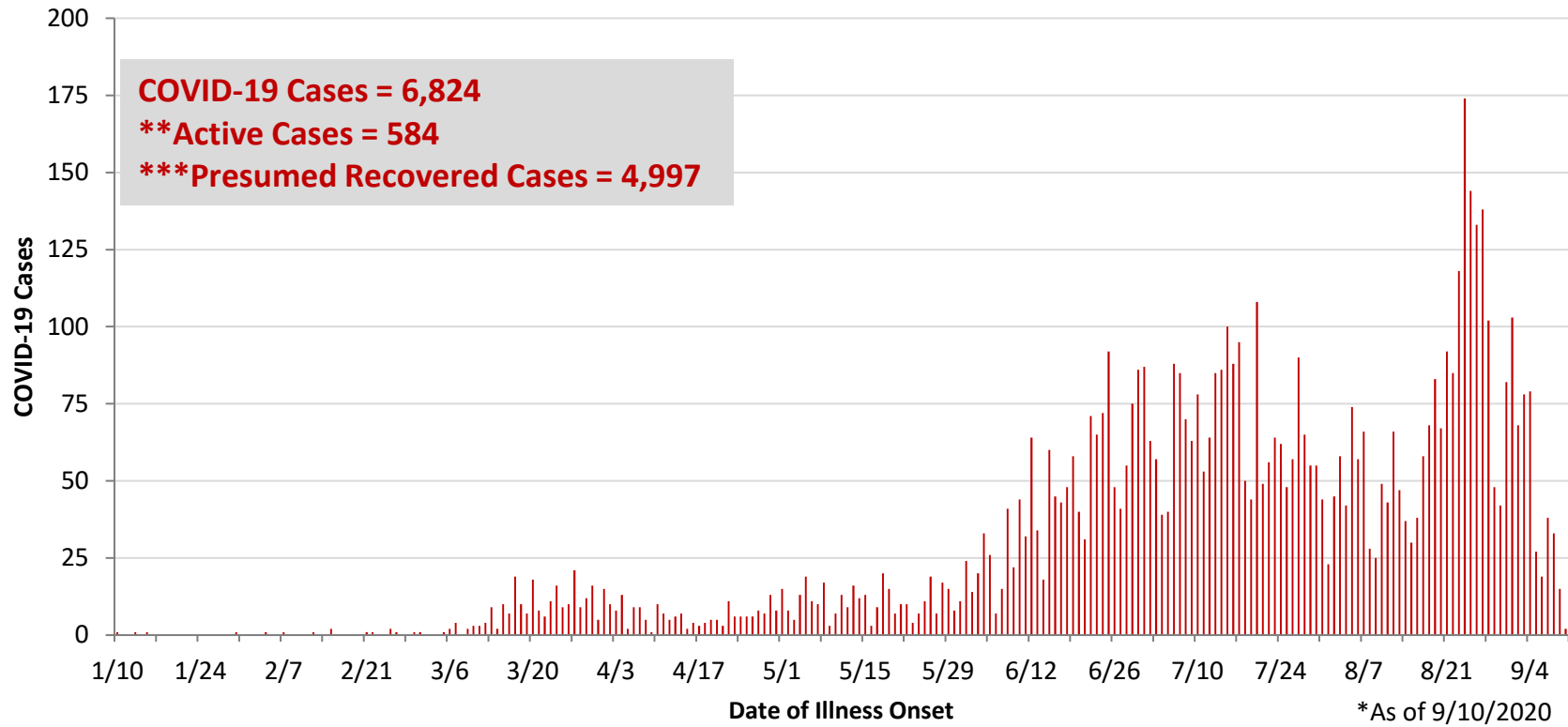


PRELIMINARY Montgomery County COVID-19 Cases by Age Group – Cases before 6/1 and June Cases vs July Cases As of 9/10/2020 (% change from June to July)

Age Group	# Cases <6/1	% of Cases <6/1	Case Rate <6/1	# Cases June	% of Cases June	Case Rate June	# Cases July	% of Cases July	Case Rate July	% Change # of Cases
<5	12	1.5%	36.9	39	3.0%	119.9	42	2.0%	129.2	7.7%
5-9	7	0.9%	21.7	30	2.3%	92.8	51	2.4%	157.8	70.0%
10-14	9	1.1%	27.7	29	2.2%	89.2	56	2.7%	172.3	93.1%
15-18	16	2.0%	59.3	60	4.5%	222.5	88	4.2%	326.4	46.7%
19-24	58	7.4%	137.7	156	11.8%	370.3	246	11.8%	583.9	57.7%
25-29	52	6.6%	135.1	150	11.4%	389.7	188	9.0%	488.4	25.3%
30-34	66	8.4%	192.9	133	10.1%	388.8	175	8.4%	511.6	31.6%
35-39	64	8.1%	197.5	124	9.4%	382.6	160	7.7%	493.7	29.0%
40-44	61	7.8%	215.9	84	6.4%	297.3	148	7.1%	523.8	76.2%
45-49	70	8.9%	220.1	94	7.1%	295.6	140	6.7%	440.3	48.9%
50-54	75	9.5%	225.5	75	5.7%	225.5	138	6.6%	415.0	84.0%
55-59	91	11.6%	247.8	80	6.1%	217.8	151	7.3%	411.1	88.8%
60-64	67	8.5%	190.5	68	5.1%	193.4	140	6.7%	398.1	105.9%
65-69	54	6.9%	180.5	47	3.6%	157.1	97	4.7%	324.1	106.4%
70-74	43	5.5%	182.1	45	3.4%	190.6	95	4.6%	402.4	111.1%
75-79	16	2.0%	94.8	35	2.6%	207.4	53	2.5%	314.1	51.4%
80-84	14	1.8%	118.1	29	2.2%	244.6	49	2.4%	413.3	69.0%
85+	12	1.5%	90.1	43	3.3%	322.9	65	3.1%	488.1	51.2%
Total	787	100%	147.8	1,321	100%	248.2	2,082	100%	391.1	57.6%

PRELIMINARY Montgomery County COVID-19 Cases by Age Group –July Cases vs August Cases As of 9/10/2020 (% change from July to August)							
Age Group	# Cases July	% of Cases July	Case Rate July	# Cases August	% of Cases August	Case Rate August	% Change # of Cases
<5	42	2.0%	129.2	24	1.1%	73.8	-42.9%
5-9	51	2.4%	157.8	28	1.3%	86.6	-45.1%
10-14	56	2.7%	172.3	47	2.2%	144.6	-16.1%
15-18	88	4.2%	326.4	224	10.4%	830.8	154.5%
19-24	246	11.8%	583.9	846	39.4%	2008.2	243.9%
25-29	188	9.0%	488.4	106	4.9%	275.4	-43.6%
30-34	175	8.4%	511.6	85	4.0%	248.5	-51.4%
35-39	160	7.7%	493.7	62	2.9%	191.3	-61.3%
40-44	148	7.1%	523.8	84	3.9%	297.3	-43.2%
45-49	140	6.7%	440.3	101	4.7%	317.6	-27.9%
50-54	138	6.6%	415.0	87	4.1%	261.6	-37.0%
55-59	151	7.3%	411.1	102	4.8%	277.7	-32.5%
60-64	140	6.7%	398.1	81	3.8%	230.3	-42.1%
65-69	97	4.7%	324.1	68	3.2%	227.2	-29.9%
70-74	95	4.6%	402.4	67	3.1%	283.8	-29.5%
75-79	53	2.5%	314.1	51	2.4%	302.2	-3.8%
80-84	49	2.4%	413.3	31	1.4%	261.4	-36.7%
85+	65	3.1%	488.1	53	2.5%	398.0	-18.5%
Total	2,082	100%	391.1	2,147	100%	403.3	3.1%

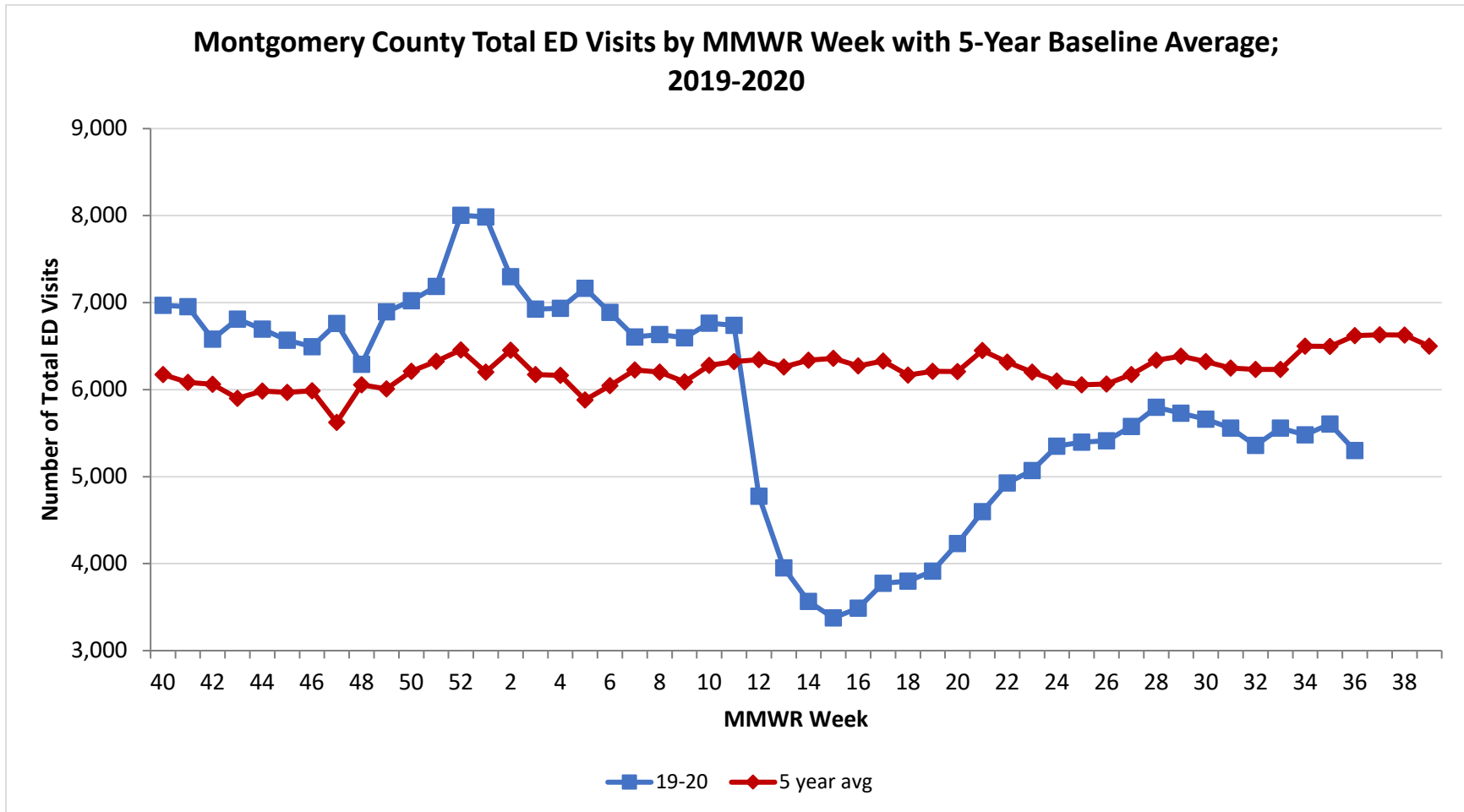
**PRELIMINARY COVID-19 Cases by Date of Illness Onset
Montgomery County, 1/10/20 - 9/10/20***



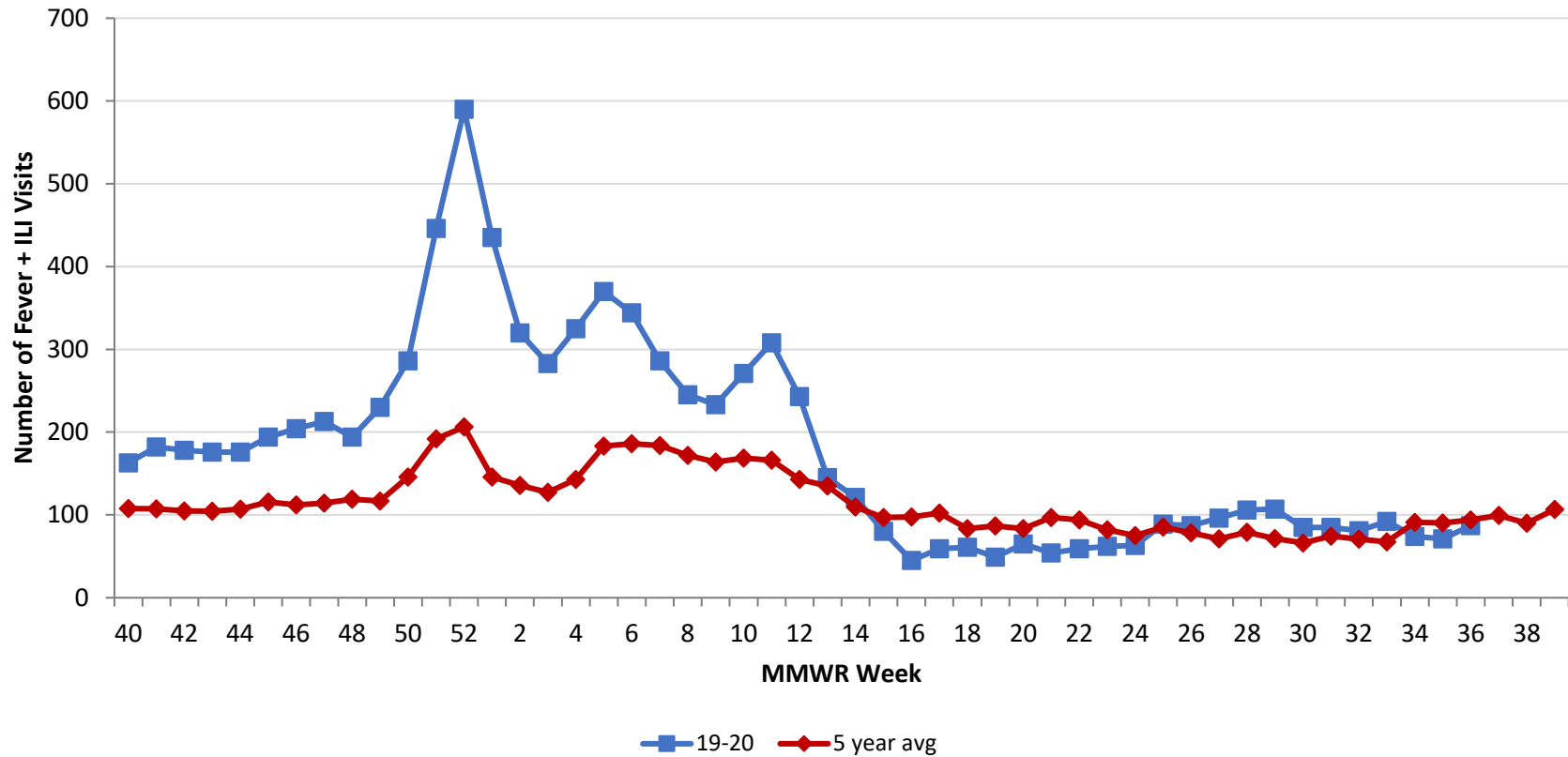
**Active cases are based on the reported illness onset date (using a 10-day window) of reported cases.

***Presumed recovered is defined as cases with a symptom onset date >21 days prior who are not deceased.

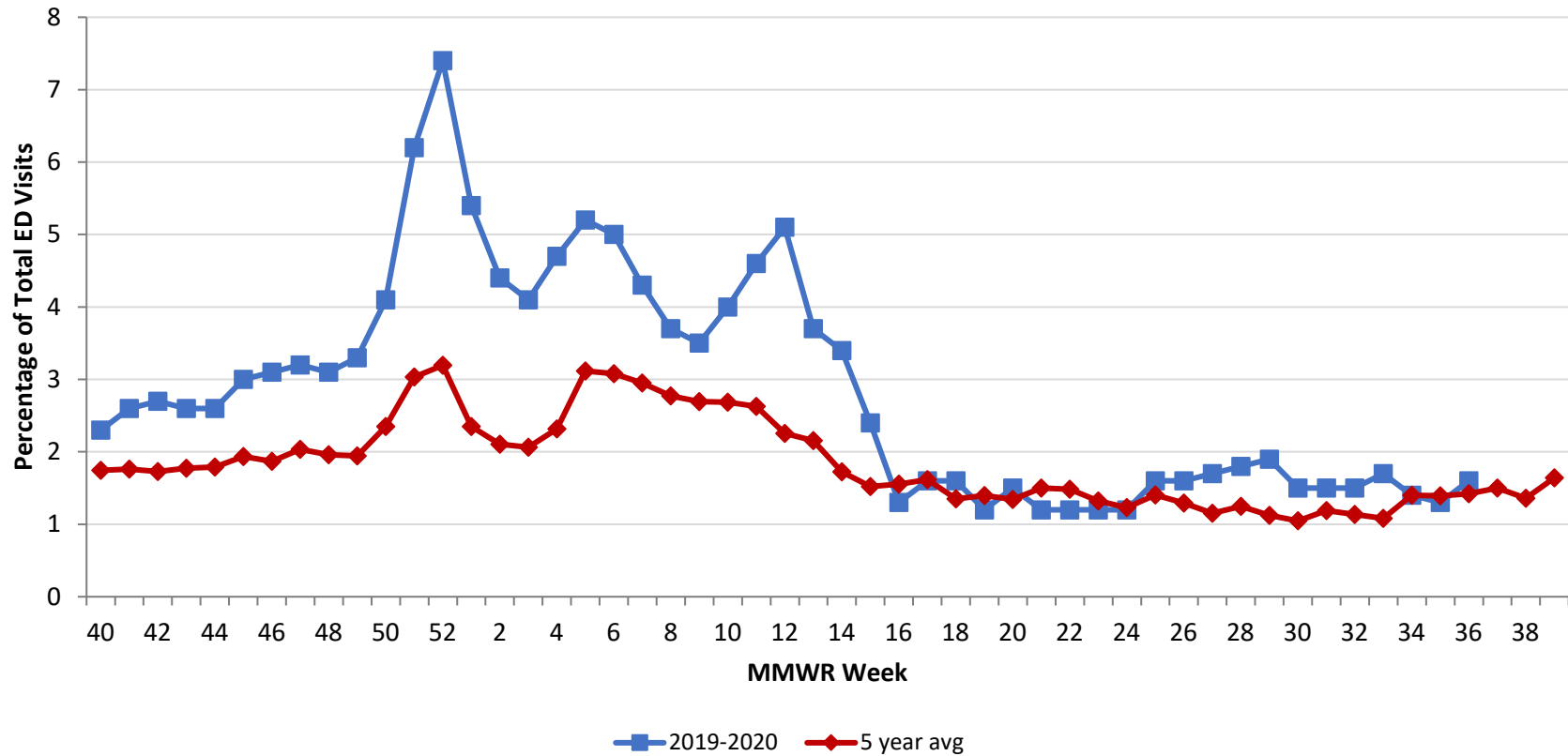
Source: EpiCenter Syndromic Surveillance, Health Monitoring Systems



Montgomery County Fever + ILI Specified ED Visits by MMWR Week with 5-Year Baseline Average; 2019-2020



**Montgomery County Fever + ILI Specified ED Visits (% of Total Visits) by MMWR Week
with 5-Year Baseline Average; 2019-2020**



# Total Visits		
MMWR Week	19-20	5-Year Average
1	7,986	6200.8
2	7,297	6452.4
3	6,924	6172.9
4	6,935	6164.0
5	7,164	5881.8
6	6,888	6045.0
7	6,605	6226.8
8	6,633	6200.6
9	6,597	6088.2
10	6,763	6279.6
11	6,738	6321.6
12	4,775	6345.0
13	3,952	6259.8
14	3,565	6337.4
15	3,376	6360.6
16	3,489	6273.4
17	3,774	6327.8
18	3,798	6165.8
19	3,915	6209.8
20	4,231	6208.4
21	4,598	6,449.6
22	4,928	6,315.4
23	5,070	6,201.0
24	5,350	6,098.4
25	5,398	6,055.8
26	5,412	6,063.2
27	5,577	6,173.0
28	5,797	6,339.0
29	5,728	6384.6
30	5,661	6,322.0
31	5,557	6,247.2
32	5,359	6232.8
33	5,558	6,233.8
34	5,481	6,501.0
35	5,606	6,496.2
36	5,301	6,621.0

# Fever + ILI Visits		
MMWR Week	19-20	5-Year Average
1	435	145.8
2	320	135.8
3	283	127.4
4	325	142.8
5	370	183.2
6	344	186.2
7	286	183.8
8	245	171.8
9	233	164.0
10	271	168.6
11	308	166.2
12	243	143.0
13	145	134.8
14	121	109.4
15	80	96.8
16	45	97.6
17	59	102.4
18	61	83.4
19	49	86.8
20	65	83.4
21	54	96.8
22	59	93.8
23	62	82.0
24	63	75.0
25	89	85.2
26	87	78.4
27	96	71.2
28	106	79.2
29	107	71.6
30	85	66.2
31	85	74.2
32	81	70.8
33	92	67.4
34	74	91.0
35	71	90.4
36	87	94.0

% Fever + ILI Visits		
MMWR Week	19-20	5-Year Average
1	5.4	2.4
2	4.4	2.1
3	4.1	2.1
4	4.7	2.3
5	5.2	3.1
6	5	3.1
7	4.3	3.0
8	3.7	2.8
9	3.5	2.7
10	4	2.7
11	4.6	2.6
12	5.1	2.3
13	3.7	2.2
14	3.4	1.7
15	2.4	1.5
16	1.3	1.6
17	1.6	1.6
18	1.6	1.4
19	1.2	1.4
20	1.5	1.3
21	1.2	1.5
22	1.2	1.5
23	1.2	1.3
24	1.2	1.2
25	1.6	1.4
26	1.6	1.3
27	1.7	1.2
28	1.8	1.2
29	1.9	1.1
30	1.5	1.0
31	1.5	1.2
32	1.5	1.1
33	1.7	1.1
34	1.4	1.4
35	1.3	1.4
36	1.6	1.4