



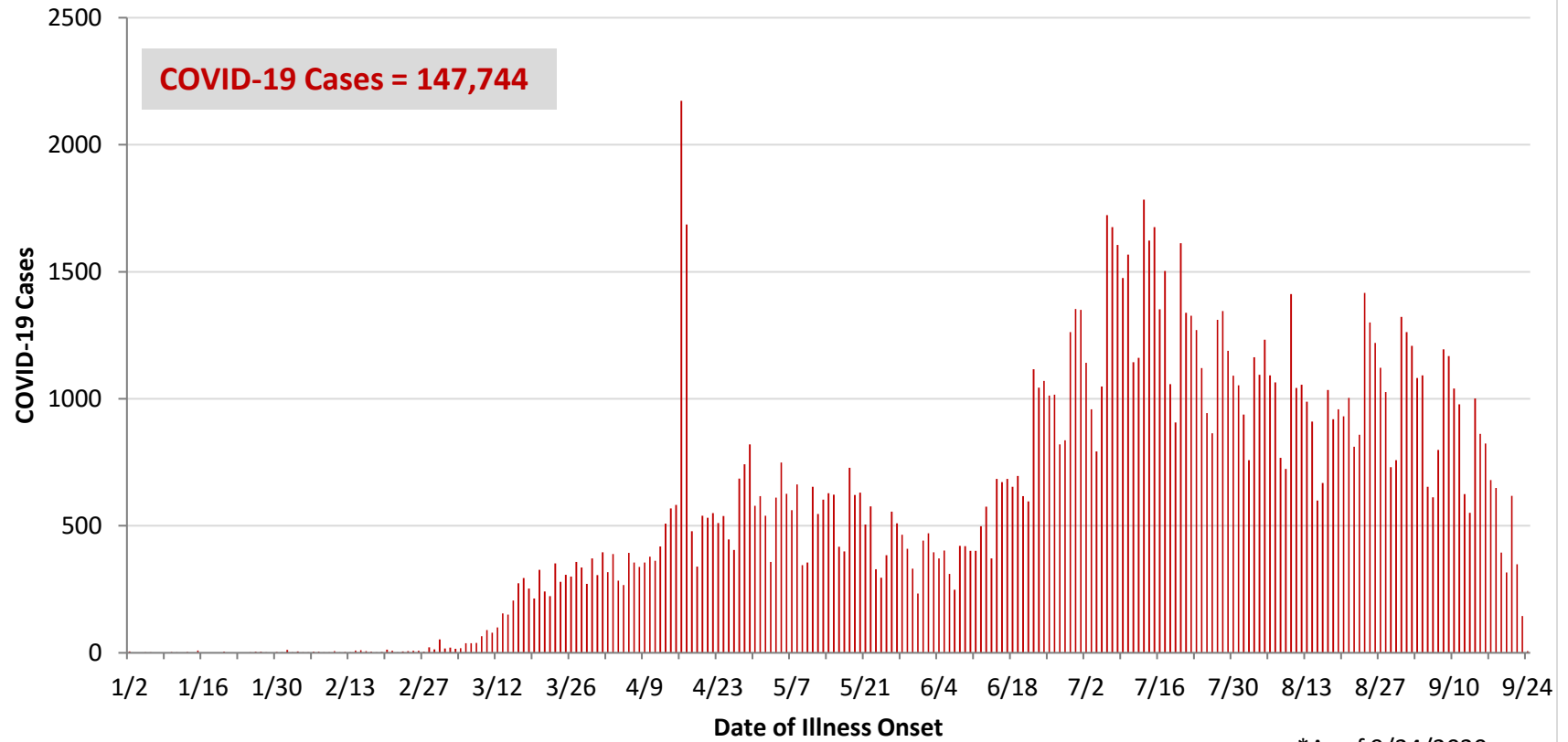
**Ohio, West Central Ohio (WCO), and Montgomery County COVID-19 Cases  
As of 9/24/20**

**Source:** The State of Ohio COVID-19 Dashboard, Ohio Department of Health

**Ohio:**

<b>Preliminary COVID-19 Cases Ohio, As of 9/24/2020</b>		
<b>Sex</b>	<b># Cases</b>	<b>% Cases</b>
Female	77,055	52%
Male	69,530	47%
Unknown	1,159	1%
<b>Total</b>	<b>147,744</b>	<b>100%</b>
<b>Age Group</b>		
<b>Age Group</b>	<b># Cases</b>	<b>% Cases</b>
0-19	17,575	12%
20-29	32,145	22%
30-39	22,424	15%
40-49	19,982	14%
50-59	20,805	14%
60-69	15,556	11%
70-79	9,950	7%
80+	9,194	6%
Unknown	113	0%
<b>Total</b>	<b>147,744</b>	<b>100%</b>
<b>Hospitalized</b>		
Hospitalized	15,051	10.2%
<b>Deaths</b>		
Deaths	4,715	3.2%
<b>Age Group</b>		
<b>Age Group</b>	<b>Deaths</b>	<b>% of Deaths</b>
0-19	2	0%
20-29	13	0%
30-39	34	1%
40-49	79	2%
50-59	276	6%
60-69	658	14%
70-79	1,180	25%
80+	2,473	52%
<b>Total</b>	<b>4,715</b>	<b>100%</b>

**PRELIMINARY COVID-19 Cases by Date of Illness Onset  
Ohio, 1/2/20 - 9/24/20\***

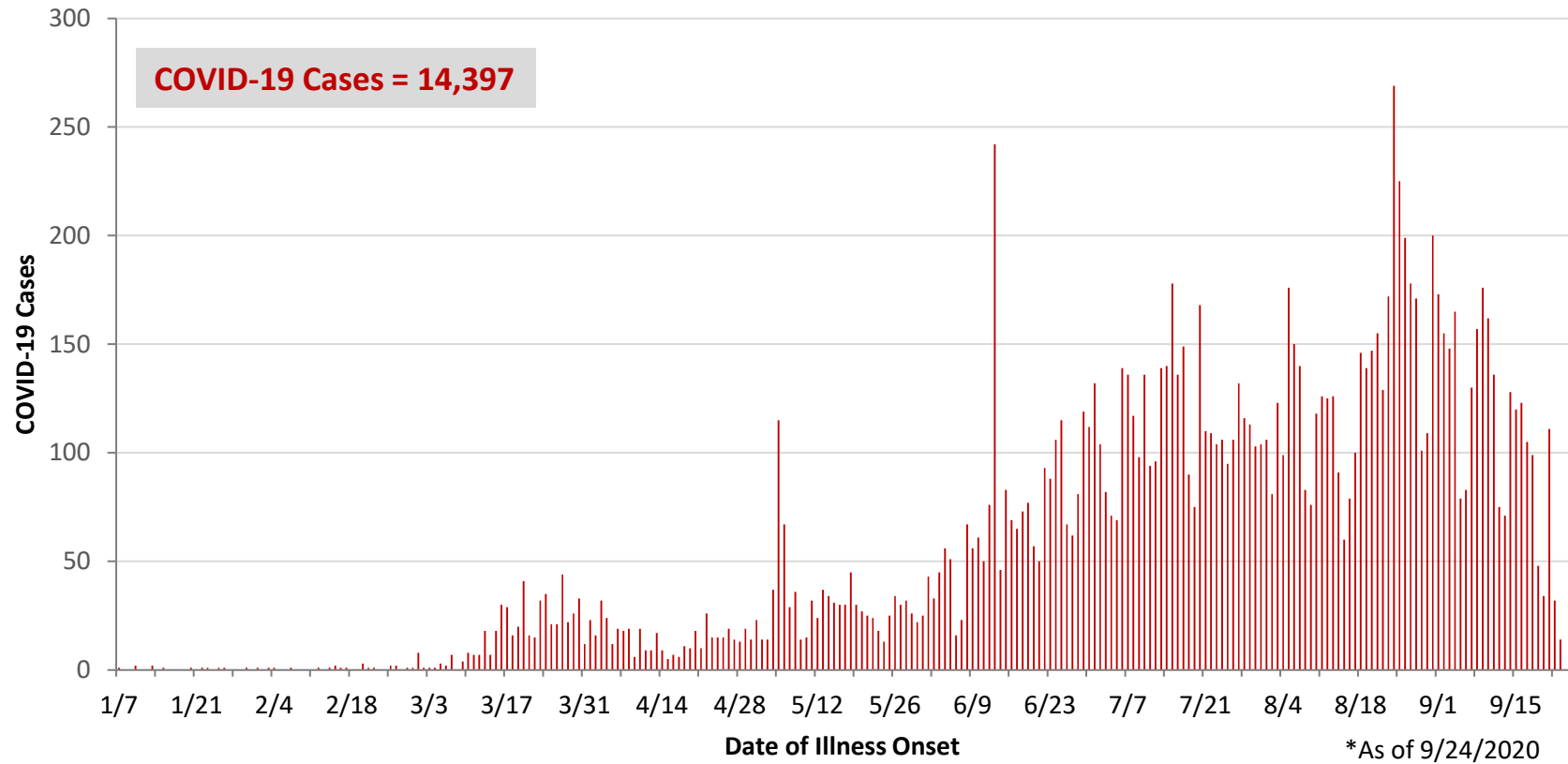


\*As of 9/24/2020

WCO:

Preliminary COVID-19 Cases West Central Ohio, As of 9/24/2020		
County	# Cases	% Cases
Champaign	302	2%
Clark	1,777	12%
Darke	784	5%
Greene	1,420	10%
Miami	1,407	10%
Montgomery	7,667	53%
Preble	430	3%
Shelby	610	4%
<b>Total</b>	<b>14,397</b>	<b>100%</b>
Sex		
Sex	# Cases	% Cases
Female	7,935	55%
Male	6,250	43%
Unknown	212	1%
<b>Total</b>	<b>14,397</b>	<b>100%</b>
Age Group		
Age Group	# Cases	% Cases
0-19	2,026	14%
20-29	3,206	22%
30-39	1,952	14%
40-49	1,753	12%
50-59	1,942	13%
60-69	1,502	10%
70-79	1,091	8%
80+	925	6%
<b>Total</b>	<b>14,397</b>	<b>100%</b>
Hospitalized	1,504	10.4%
Deaths	350	2.4%
Age Group		
Age Group	Deaths	% of Deaths
0-19	1	0%
20-29	3	1%
30-39	4	1%
40-49	9	3%
50-59	21	6%
60-69	50	14%
70-79	79	23%
80+	183	52%
<b>Total</b>	<b>350</b>	<b>100%</b>

**PRELIMINARY COVID-19 Cases by Date of Illness Onset  
West Central Ohio, 1/7/20 - 9/24/20\***



**Montgomery County:**

<b>Preliminary COVID-19 Cases Montgomery County, As of 9/24/2020</b>		
<b>Sex</b>	<b># Cases</b>	<b>% Cases</b>
Female	4,315	56%
Male	3,284	43%
Unknown	68	1%
<b>Total</b>	<b>7,667</b>	<b>100%</b>
<b>Age Group</b>		
<b>Age Group</b>	<b># Cases</b>	<b>% Cases</b>
0-19	1,261	16%
20-29	1,897	25%
30-39	1,020	13%
40-49	912	12%
50-59	949	12%
60-69	731	10%
70-79	506	7%
80+	390	5%
Unknown	1	0%
<b>Total</b>	<b>7,667</b>	<b>100%</b>
<b>Hospitalized</b>		
Hospitalized	904	11.8%
<b>Deaths</b>		
Deaths	157	2.0%
<b>Age Group</b>		
<b>Age Group</b>	<b>Deaths</b>	<b>% of Deaths</b>
0-19	1	1%
20-29	3	2%
30-39	3	2%
40-49	7	4%
50-59	13	8%
60-69	28	18%
70-79	39	25%
80+	63	40%
<b>Total</b>	<b>157</b>	<b>100%</b>

<b>Age Group</b>	<b>Hospitalizations</b>	<b>% of Age Group Cases</b>
0-19	33	2.6%
20-29	49	2.6%
30-39	79	7.7%
40-49	93	10.2%
50-59	156	16.4%
60-69	183	25.0%
70-79	185	36.6%
80+	126	32.3%
<b>Total</b>	<b>904</b>	<b>11.8%</b>

Source: Ohio Disease Reporting System, ODH

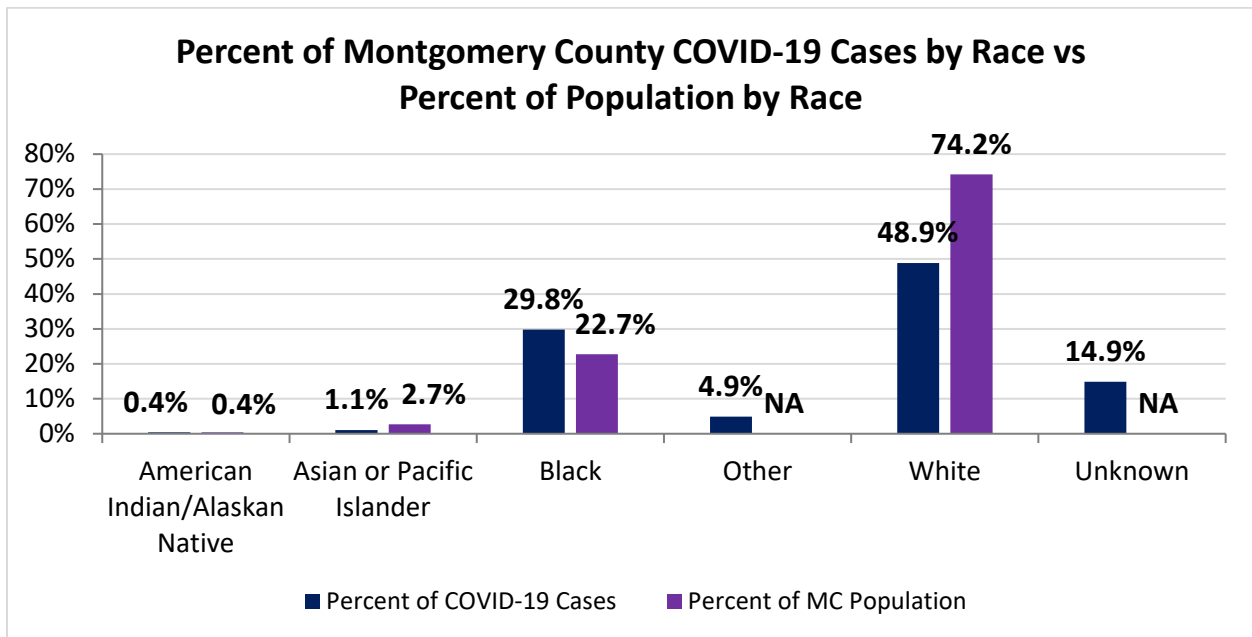
Note. All rates are per 100,000 population.

Montgomery County COVID-19 Cases by Race As of 9/24/20				
Race	Count	Percent	Case Rate	Rate Interpretation**
American Indian/Alaskan Native (AI/AN)*	31	0.4%	1,449.3	1 in 69
Asian	82	1.1%	581.6	1 in 172
Black	2,277	29.8%	1,883.2	1 in 53
Other	376	4.9%	NA	NA
White	3,729	48.9%	945.2	1 in 106
Unknown	1,137	14.9%	NA	NA
<b>Total</b>	<b>7,632</b>	<b>100%</b>	<b>1,435.4</b>	<b>1 in 70</b>

\*Note. AI/ANs account for 0.4% of Montgomery County's population, and therefore, rates for this population will be large and may be misleading.

\*\*Rate interpretation represents the number of cases for the given population.

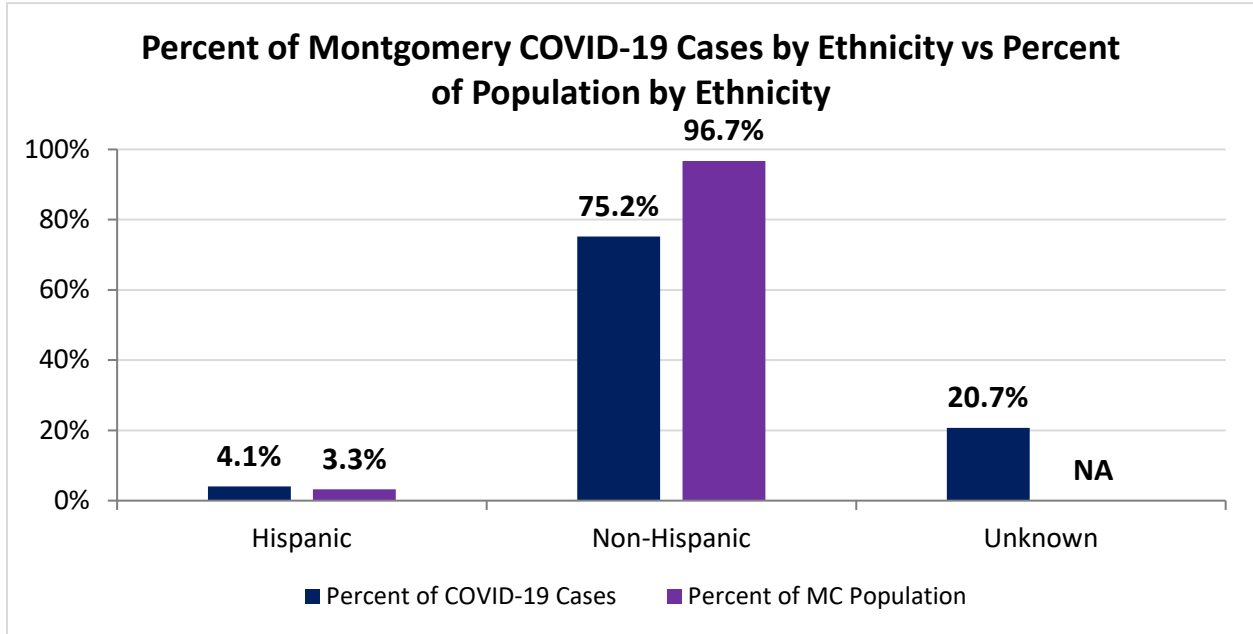
Example - there is a total of 1 case for every 70 Montgomery County residents.



Montgomery County COVID-19 Deaths by Race as of 9/24/2020		
Race	Count	Death Rate
American Indian/Alaskan Native	2	93.5
Asian or Pacific Islander	4	28.4
Black	63	52.1
Other	1	NA
White	90	22.8
Unknown	0	NA
<b>Total</b>	<b>160</b>	<b>30.1</b>

<b>Montgomery County COVID-19 Cases by Ethnicity As of 9/24/20</b>				
<b>Ethnicity</b>	<b>Count</b>	<b>Percent</b>	<b>Case Rate</b>	<b>Rate Interpretation**</b>
Hispanic	311	4.1%	1,794.8	1 in 56
Non-Hispanic	5,740	75.2%	1,116.0	1 in 90
Unknown	1,581	20.7%	NA	NA
<b>Total</b>	<b>7,632</b>	<b>100%</b>	<b>1,435.4</b>	<b>1 in 70</b>

\*\*Rate interpretation represents the number of cases for the given population.  
 Example - there is a total of 1 case for every 70 Montgomery County residents.



<b>Montgomery County COVID-19 Cases by Health Care Worker Status As of 9/24/20</b>		
<b>Status</b>	<b>#</b>	<b>%</b>
Health Care Worker	730	9.6%
Non-Health Care Worker	4,487	58.8%
Unknown	2,415	31.6%
<b>Total</b>	<b>7,632</b>	<b>100%</b>

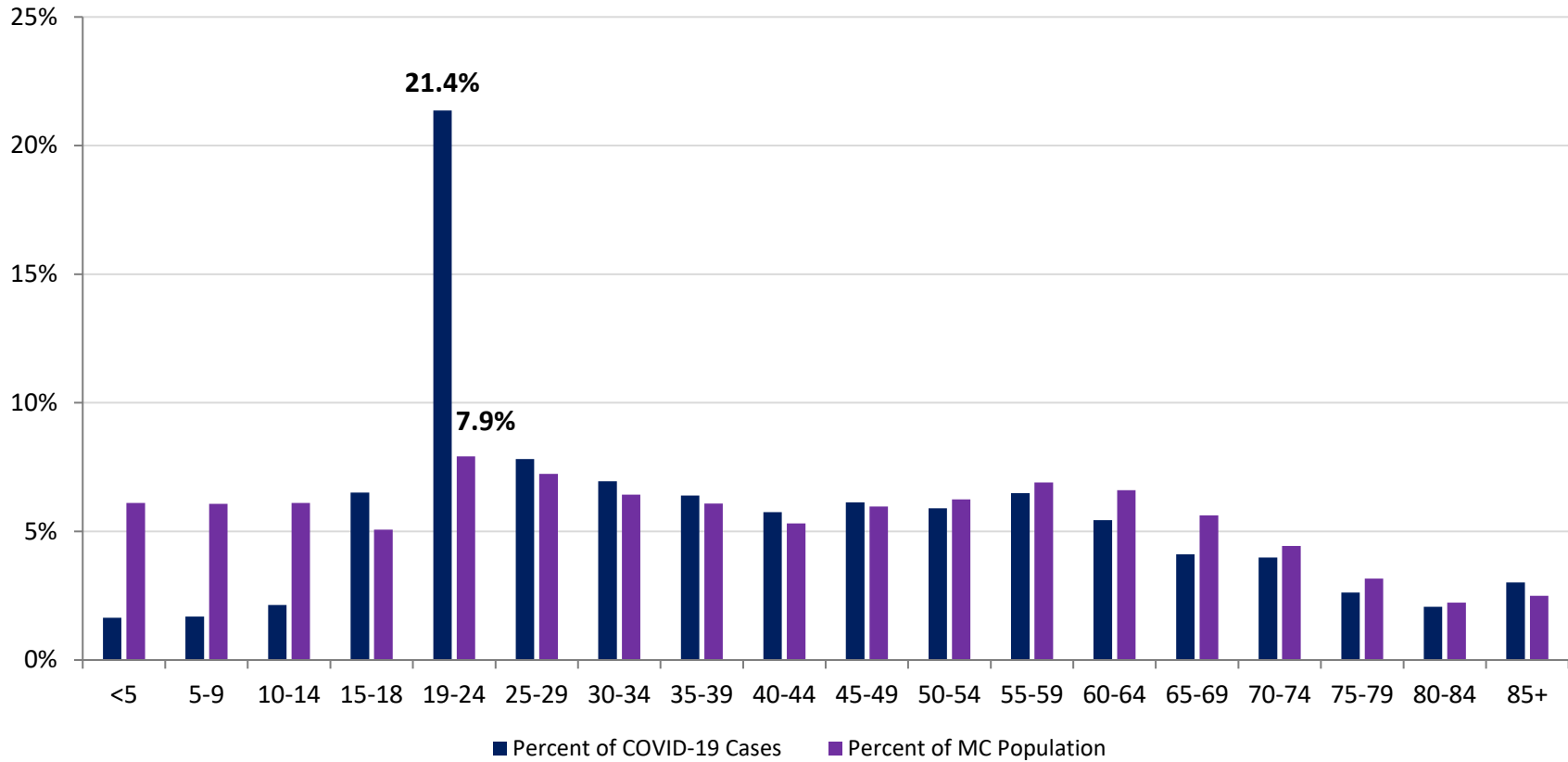
<b>Montgomery County COVID-19 Cases Age Range As of 9/24/20</b>	
<b>Stat</b>	<b>Age in Years</b>
Age Range	<1 - 104
Average Age	40.2
Median Age	36.0

<b>Montgomery County COVID-19 Cases by Age Group As of 9/24/20</b>						
<b>Age Group</b>	<b>Total Cases</b>	<b>Total Case Rate</b>	<b>Percent of COVID-19 Cases</b>	<b>Percent of MC Population</b>	<b>Current Cases*</b>	<b>Current Case Rate*</b>
<5	125	383.2	1.6%	6.1%	6	18.4
5-9	129	400.7	1.7%	6.1%	12	37.3
10-14	163	507.9	2.1%	6.1%	18	56.1
15-18	497	1,881.6	6.5%	5.1%	75	284.0
19-24	1630	3,872.7	21.4%	7.9%	212	503.7
25-29	596	1,553.9	7.8%	7.2%	89	232.0
30-34	530	1,516.0	6.9%	6.4%	62	177.3
35-39	488	1,511.7	6.4%	6.1%	67	207.6
40-44	439	1,527.6	5.8%	5.3%	49	170.5
45-49	468	1,527.5	6.1%	6.0%	49	159.9
50-54	450	1,393.8	5.9%	6.2%	63	195.1
55-59	495	1,366.1	6.5%	6.9%	59	162.8
60-64	415	1,173.9	5.4%	6.6%	50	141.4
65-69	314	1,039.0	4.1%	5.6%	41	135.7
70-74	304	1,232.5	4.0%	4.4%	45	182.4
75-79	200	1,163.5	2.6%	3.2%	38	221.1
80-84	158	1,319.0	2.1%	2.2%	31	258.8
85+	230	1,719.4	3.0%	2.5%	51	381.3
<b>Total</b>	<b>7,631</b>	<b>1,435.2</b>	<b>100%</b>	<b>100%</b>	<b>1,017</b>	<b>191.3</b>

\*Current Cases – cases with symptom onset in the past 21 days. Current Case Rate – current cases per 100,000.



Percent of Montgomery County COVID-19 Cases by Age Group vs Percent of Population by Age Group

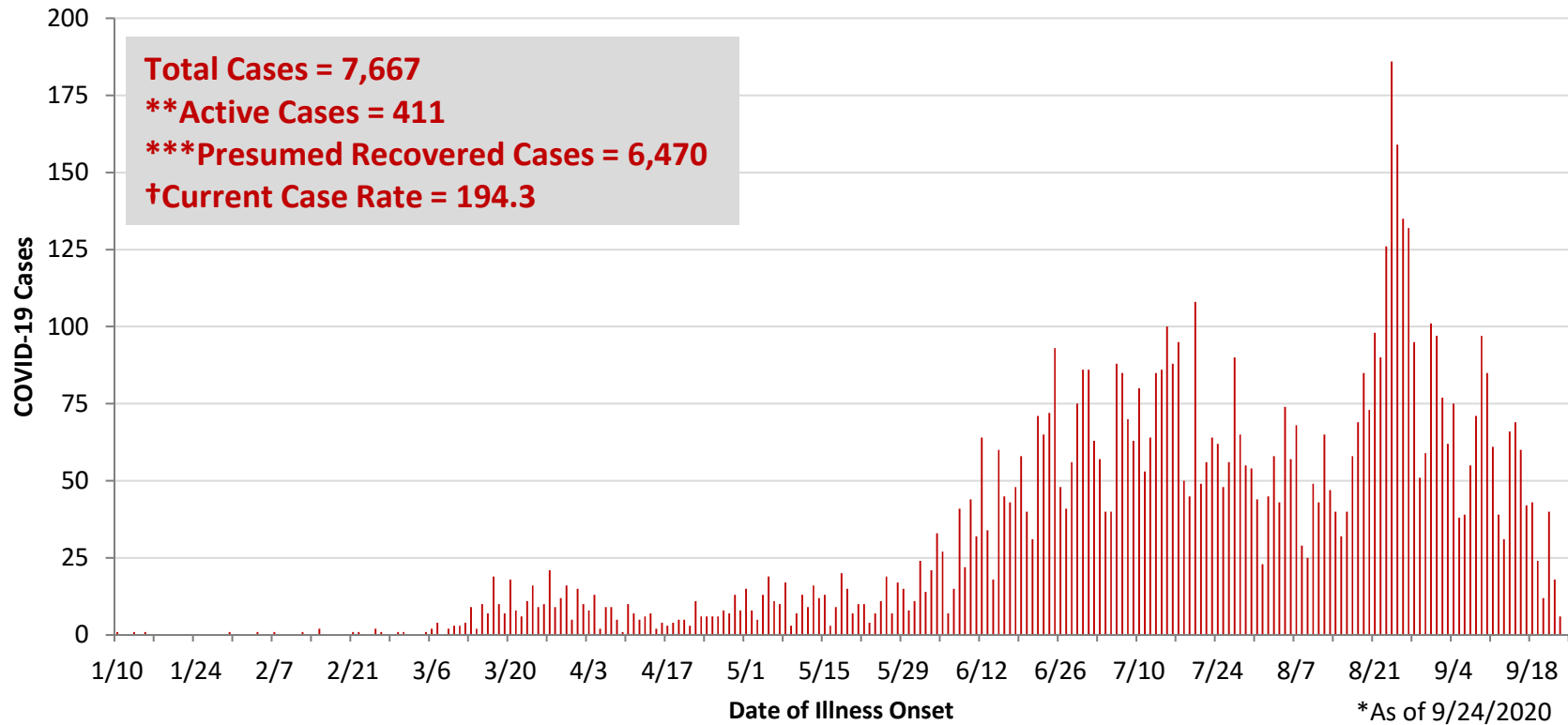


**PRELIMINARY Montgomery County COVID-19 Cases by Age Group – Cases before 6/1 and June Cases vs July Cases As of 9/24/2020 (% change from June to July)**

<b>Age Group</b>	<b># Cases &lt;6/1</b>	<b>% of Cases &lt;6/1</b>	<b>Case Rate &lt;6/1</b>	<b># Cases June</b>	<b>% of Cases June</b>	<b>Case Rate June</b>	<b># Cases July</b>	<b>% of Cases July</b>	<b>Case Rate July</b>	<b>% Change # of Cases</b>
<5	12	1.5%	36.8	39	2.9%	119.6	42	2.0%	128.7	7.7%
5-9	7	0.9%	21.7	30	2.3%	93.2	51	2.4%	158.4	70.0%
10-14	9	1.1%	28.0	29	2.2%	90.4	56	2.7%	174.5	93.1%
15-18	16	2.0%	60.6	60	4.5%	227.2	88	4.2%	333.2	46.7%
19-24	58	7.4%	137.8	156	11.8%	370.6	248	11.9%	589.2	59.0%
25-29	52	6.6%	135.6	150	11.3%	391.1	189	9.1%	492.8	26.0%
30-34	66	8.4%	188.8	134	10.1%	383.3	176	8.4%	503.4	31.3%
35-39	64	8.1%	198.3	124	9.4%	384.1	161	7.7%	498.7	29.8%
40-44	61	7.8%	212.3	84	6.3%	292.3	147	7.1%	511.5	75.0%
45-49	70	8.9%	228.5	95	7.2%	310.1	139	6.7%	453.7	46.3%
50-54	75	9.5%	232.3	75	5.7%	232.3	137	6.6%	424.3	82.7%
55-59	91	11.6%	251.1	80	6.0%	220.8	151	7.2%	416.7	88.8%
60-64	67	8.5%	189.5	69	5.2%	195.2	140	6.7%	396.0	102.9%
65-69	54	6.9%	178.7	47	3.5%	155.5	97	4.7%	321.0	106.4%
70-74	43	5.5%	174.3	45	3.4%	182.4	95	4.6%	385.1	111.1%
75-79	16	2.0%	93.1	36	2.7%	209.4	53	2.5%	308.3	47.2%
80-84	14	1.8%	116.9	29	2.2%	242.1	49	2.4%	409.0	69.0%
85+	12	1.5%	89.7	43	3.2%	321.4	66	3.2%	493.4	53.5%
<b>Total</b>	<b>787</b>	<b>100%</b>	<b>148.0</b>	<b>1,325</b>	<b>100%</b>	<b>249.2</b>	<b>2,085</b>	<b>100%</b>	<b>392.1</b>	<b>57.4%</b>

<b>PRELIMINARY Montgomery County COVID-19 Cases by Age Group –July Cases vs August Cases As of 9/24/2020 (% change from July to August)</b>							
<b>Age Group</b>	<b># Cases July</b>	<b>% of Cases July</b>	<b>Case Rate July</b>	<b># Cases August</b>	<b>% of Cases August</b>	<b>Case Rate August</b>	<b>% Change # of Cases</b>
<5	42	2.0%	128.7	24	1.1%	73.6	-42.9%
5-9	51	2.4%	158.4	28	1.2%	87.0	-45.1%
10-14	56	2.7%	174.5	48	2.1%	149.6	-14.3%
15-18	88	4.2%	333.2	239	10.7%	904.9	171.6%
19-24	248	11.9%	589.2	885	39.4%	2102.6	256.9%
25-29	189	9.1%	492.8	107	4.8%	279.0	-43.4%
30-34	176	8.4%	503.4	86	3.8%	246.0	-51.1%
35-39	161	7.7%	498.7	65	2.9%	201.4	-59.6%
40-44	147	7.1%	511.5	90	4.0%	313.2	-38.8%
45-49	139	6.7%	453.7	106	4.7%	346.0	-23.7%
50-54	137	6.6%	424.3	93	4.1%	288.1	-32.1%
55-59	151	7.2%	416.7	107	4.8%	295.3	-29.1%
60-64	140	6.7%	396.0	84	3.7%	237.6	-40.0%
65-69	97	4.7%	321.0	72	3.2%	238.2	-25.8%
70-74	95	4.6%	385.1	71	3.2%	287.8	-25.3%
75-79	53	2.5%	308.3	54	2.4%	314.1	1.9%
80-84	49	2.4%	409.0	32	1.4%	267.1	-34.7%
85+	66	3.2%	493.4	53	2.4%	396.2	-19.7%
<b>Total</b>	<b>2,085</b>	<b>100%</b>	<b>392.1</b>	<b>2,244</b>	<b>100%</b>	<b>422.1</b>	<b>7.6%</b>

**PRELIMINARY COVID-19 Cases by Date of Illness Onset  
Montgomery County, 1/10/20 - 9/24/20\***

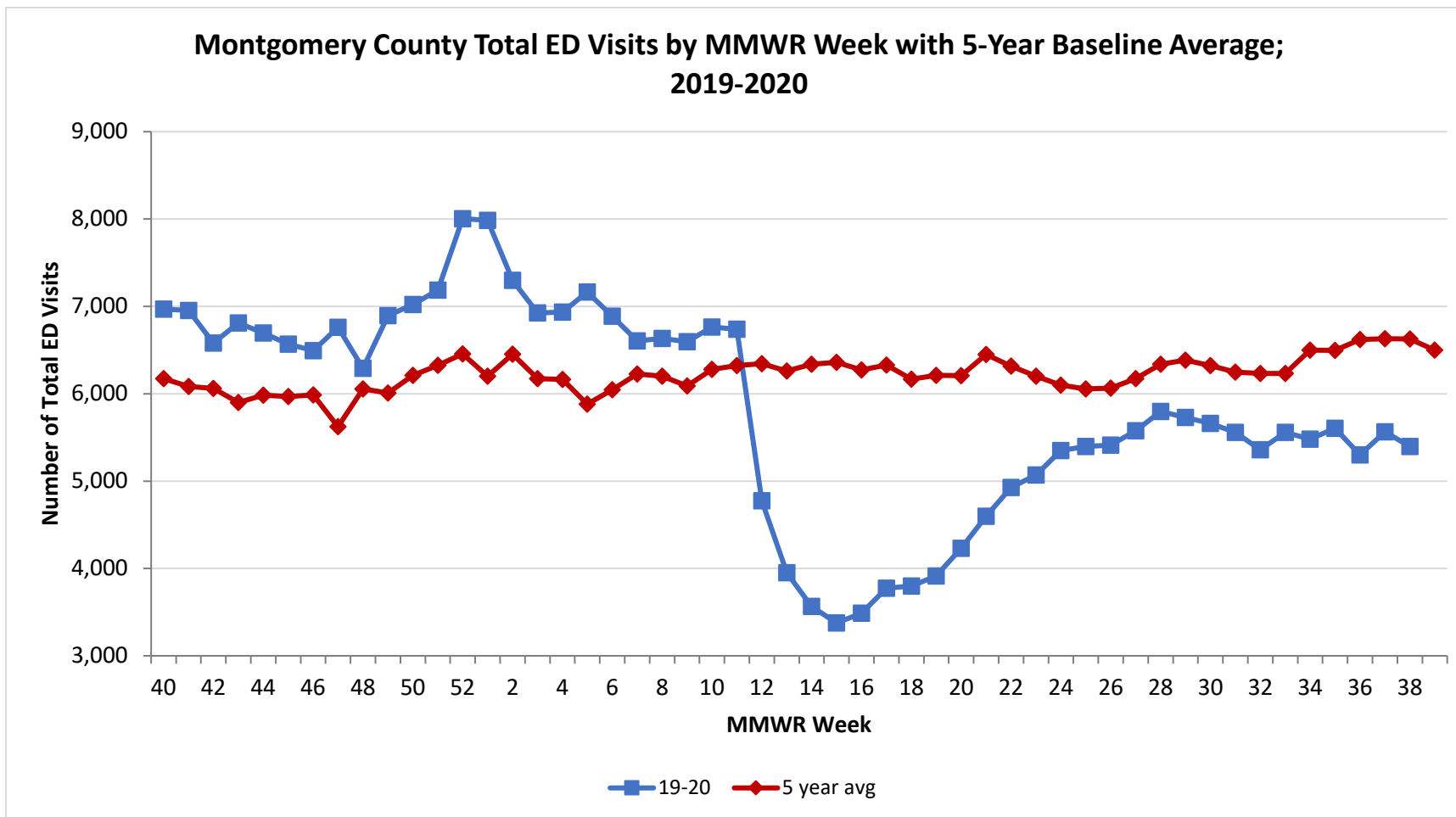


\*\*Active cases are based on the reported illness onset date (using a 10-day window) of reported cases.

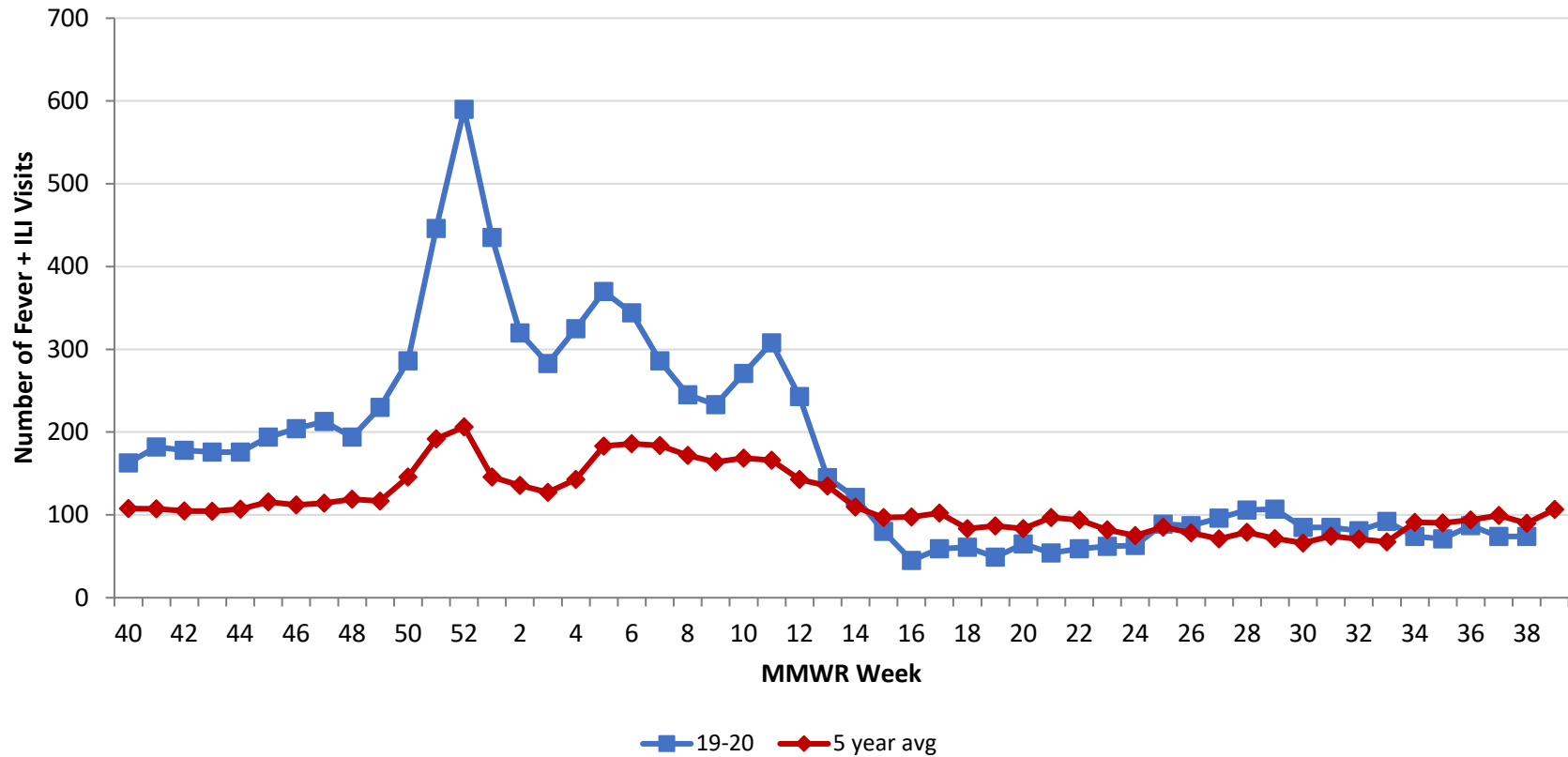
\*\*\*Presumed recovered is defined as cases with a symptom onset date >21 days prior who are not deceased.

†Current Case Rate – current cases (symptom onset past 21 days) per 100,000.

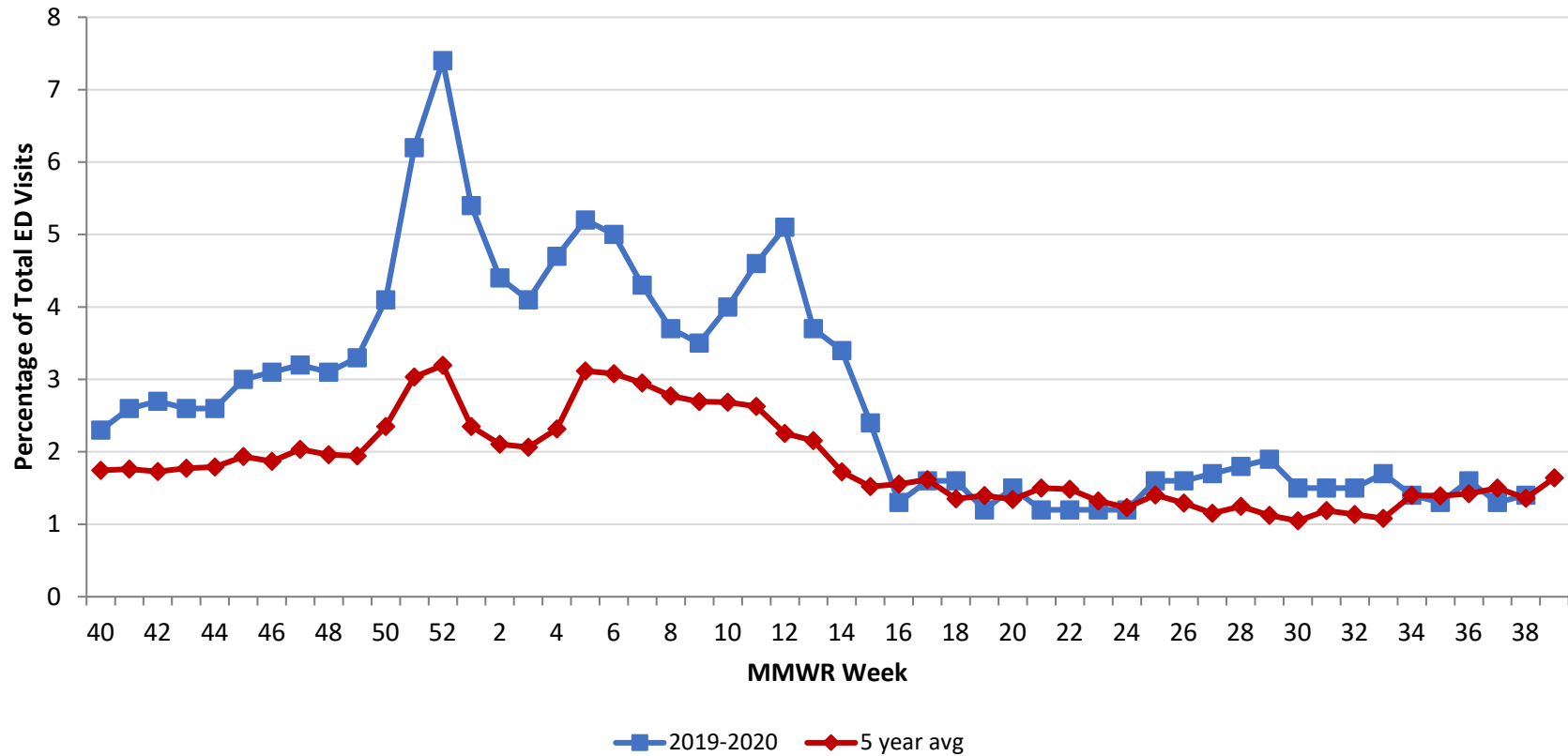
Source: EpiCenter Syndromic Surveillance, Health Monitoring Systems



Montgomery County Fever + ILI Specified ED Visits by MMWR Week with 5-Year Baseline Average; 2019-2020



**Montgomery County Fever + ILI Specified ED Visits (% of Total Visits) by MMWR Week  
with 5-Year Baseline Average; 2019-2020**



# Total Visits		
MMWR Week	19-20	5-Year Average
3	6,924	6172.9
4	6,935	6164.0
5	7,164	5881.8
6	6,888	6045.0
7	6,605	6226.8
8	6,633	6200.6
9	6,597	6088.2
10	6,763	6279.6
11	6,738	6321.6
12	4,775	6345.0
13	3,952	6259.8
14	3,565	6337.4
15	3,376	6360.6
16	3,489	6273.4
17	3,774	6327.8
18	3,798	6165.8
19	3,915	6209.8
20	4,231	6208.4
21	4,598	6,449.6
22	4,928	6,315.4
23	5,070	6,201.0
24	5,350	6,098.4
25	5,398	6,055.8
26	5,412	6,063.2
27	5,577	6,173.0
28	5,797	6,339.0
29	5,728	6384.6
30	5,661	6,322.0
31	5,557	6,247.2
32	5,359	6232.8
33	5,558	6,233.8
34	5,481	6,501.0
35	5,606	6,496.2
36	5,301	6,621.0
37	5,563	6,630.2
38	5,396	6,627.8

# Fever + ILI Visits		
MMWR Week	19-20	5-Year Average
3	283	127.4
4	325	142.8
5	370	183.2
6	344	186.2
7	286	183.8
8	245	171.8
9	233	164.0
10	271	168.6
11	308	166.2
12	243	143.0
13	145	134.8
14	121	109.4
15	80	96.8
16	45	97.6
17	59	102.4
18	61	83.4
19	49	86.8
20	65	83.4
21	54	96.8
22	59	93.8
23	62	82.0
24	63	75.0
25	89	85.2
26	87	78.4
27	96	71.2
28	106	79.2
29	107	71.6
30	85	66.2
31	85	74.2
32	81	70.8
33	92	67.4
34	74	91.0
35	71	90.4
36	87	94.0
37	74	99.4
38	74	90.0

% Fever + ILI Visits		
MMWR Week	19-20	5-Year Average
3	4.1	2.1
4	4.7	2.3
5	5.2	3.1
6	5	3.1
7	4.3	3.0
8	3.7	2.8
9	3.5	2.7
10	4	2.7
11	4.6	2.6
12	5.1	2.3
13	3.7	2.2
14	3.4	1.7
15	2.4	1.5
16	1.3	1.6
17	1.6	1.6
18	1.6	1.4
19	1.2	1.4
20	1.5	1.3
21	1.2	1.5
22	1.2	1.5
23	1.2	1.3
24	1.2	1.2
25	1.6	1.4
26	1.6	1.3
27	1.7	1.2
28	1.8	1.2
29	1.9	1.1
30	1.5	1.0
31	1.5	1.2
32	1.5	1.1
33	1.7	1.1
34	1.4	1.4
35	1.3	1.4
36	1.6	1.4
37	1.3	1.5
38	1.4	1.4