



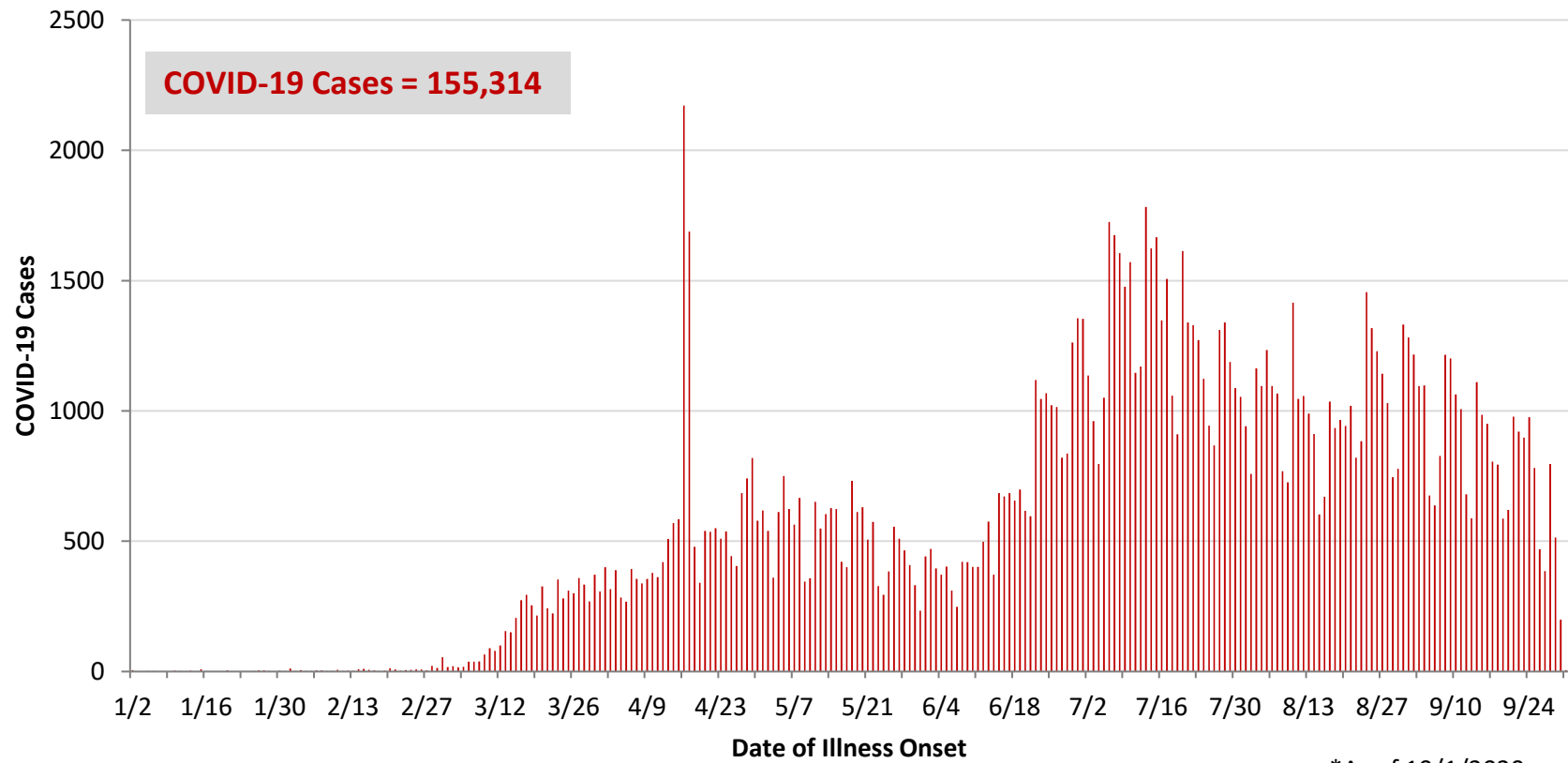
**Ohio, West Central Ohio (WCO), and Montgomery County COVID-19 Cases
As of 10/1/20**

Source: The State of Ohio COVID-19 Dashboard, Ohio Department of Health

Ohio:

Preliminary COVID-19 Cases Ohio, As of 10/1/2020		
Sex	# Cases	% Cases
Female	81,004	52%
Male	73,089	47%
Unknown	1,221	1%
Total	155,314	100%
Age Group		
Age Group	# Cases	% Cases
0-19	18,865	12%
20-29	33,698	22%
30-39	23,413	15%
40-49	20,881	13%
50-59	21,776	14%
60-69	16,405	11%
70-79	10,513	7%
80+	9,649	6%
Unknown	114	0%
Total	155,314	100%
Hospitalized		
Hospitalized	15,606	10.0%
Deaths		
Deaths	4,817	3.1%
Age Group		
Age Group	Deaths	% of Deaths
0-19	2	0%
20-29	13	0%
30-39	37	1%
40-49	80	2%
50-59	278	6%
60-69	670	14%
70-79	1,209	25%
80+	2,528	52%
Total	4,817	100%

**PRELIMINARY COVID-19 Cases by Date of Illness Onset
Ohio, 1/2/20 - 10/1/20***

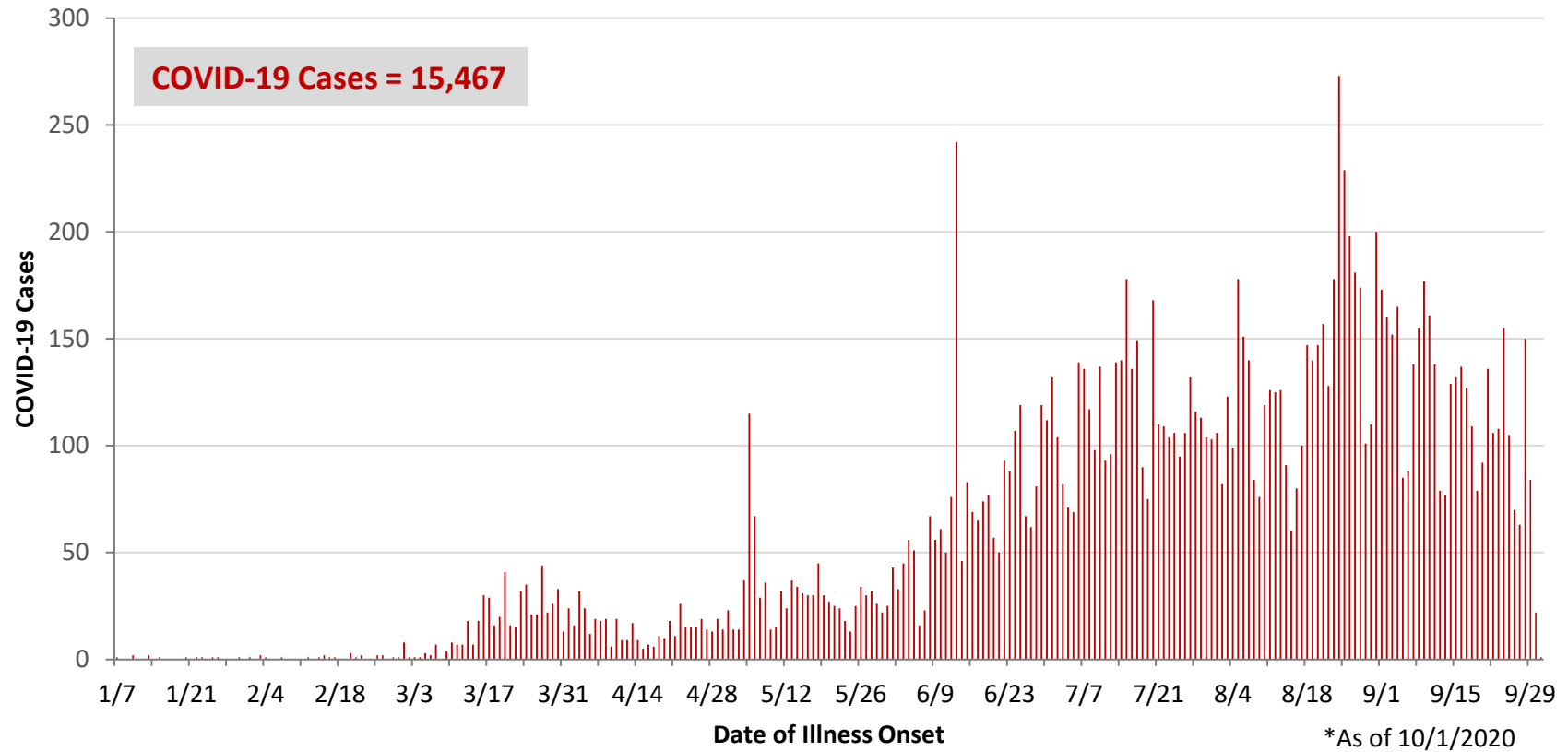


*As of 10/1/2020

WCO:

Preliminary COVID-19 Cases West Central Ohio, As of 10/1/2020		
County	# Cases	% Cases
Champaign	318	2%
Clark	1,895	12%
Darke	865	6%
Greene	1,589	10%
Miami	1,526	10%
Montgomery	8,120	52%
Preble	464	3%
Shelby	690	4%
Total	15,467	100%
Sex		
Sex	# Cases	% Cases
Female	8,528	55%
Male	6,712	43%
Unknown	227	1%
Total	15,467	100%
Age Group		
Age Group	# Cases	% Cases
0-19	2,167	14%
20-29	3,364	22%
30-39	2,086	13%
40-49	1,909	12%
50-59	2,085	13%
60-69	1,656	11%
70-79	1,182	8%
80+	1,018	7%
Total	15,467	100%
Hospitalized	1,595	10.3%
Deaths	367	2.4%
Age Group		
Age Group	Deaths	% of Deaths
0-19	1	0%
20-29	3	1%
30-39	4	1%
40-49	9	2%
50-59	21	6%
60-69	51	14%
70-79	85	23%
80+	193	53%
Total	367	100%

**PRELIMINARY COVID-19 Cases by Date of Illness Onset
West Central Ohio, 1/7/20 - 10/1/20***



Montgomery County:

Preliminary COVID-19 Cases Montgomery County, As of 10/1/2020		
Sex	# Cases	% Cases
Female	4,565	56%
Male	3,487	43%
Unknown	68	1%
Total	8,120	100%
Age Group		
Age Group	# Cases	% Cases
0-19	1,337	16%
20-29	1,960	24%
30-39	1,078	13%
40-49	973	12%
50-59	1,007	12%
60-69	786	10%
70-79	548	7%
80+	430	5%
Unknown	1	0%
Total	8,120	100%
Hospitalized		
Hospitalized	961	11.8%
Deaths		
Deaths	166	2.0%
Age Group		
Age Group	Deaths	% of Deaths
0-19	1	1%
20-29	3	2%
30-39	3	2%
40-49	7	4%
50-59	13	8%
60-69	28	17%
70-79	41	25%
80+	70	42%
Total	166	100%

Age Group	Hospitalizations	% of Age Group Cases
0-19	36	2.7%
20-29	53	2.7%
30-39	80	7.4%
40-49	95	9.8%
50-59	163	16.2%
60-69	195	24.8%
70-79	203	37.0%
80+	136	31.6%
Total	961	11.8%

Source: Ohio Disease Reporting System, ODH

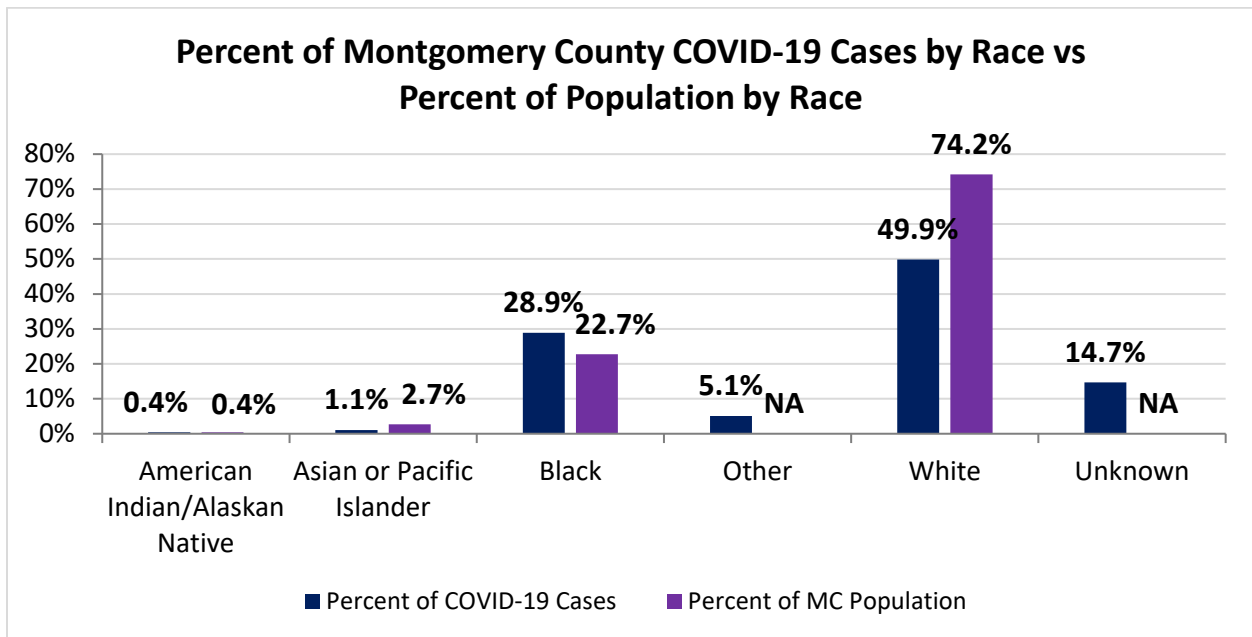
Note. All rates are per 100,000 population.

Montgomery County COVID-19 Cases by Race As of 10/1/20				
Race	Count	Percent	Case Rate	Rate Interpretation**
American Indian/Alaskan Native (AI/AN)*	33	0.4%	1,542.8	1 in 65
Asian	88	1.1%	624.2	1 in 160
Black	2,331	28.9%	1,927.9	1 in 52
Other	412	5.1%	NA	NA
White	4,026	49.9%	1,020.4	1 in 98
Unknown	1,186	14.7%	NA	NA
Total	8,076	100%	1,518.9	1 in 66

*Note. AI/ANs account for 0.4% of Montgomery County's population, and therefore, rates for this population will be large and may be misleading.

**Rate interpretation represents the number of cases for the given population.

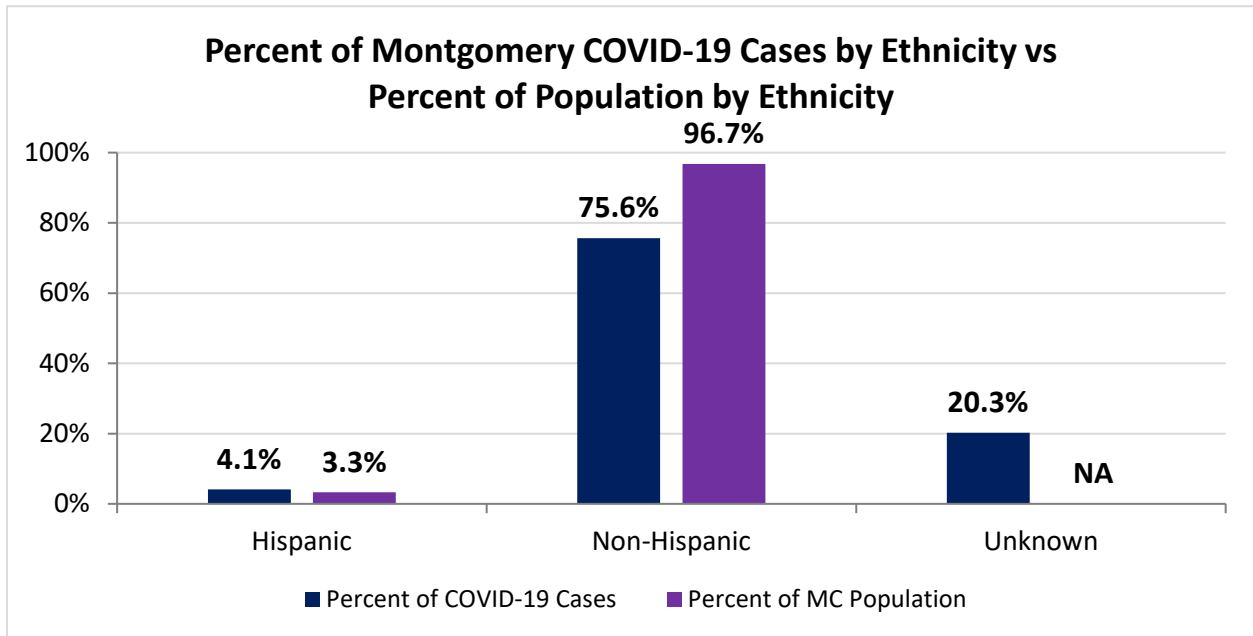
Example - there is a total of 1 case for every 66 Montgomery County residents.



Montgomery County COVID-19 Deaths by Race as of 10/1/2020		
Race	Count	Death Rate
American Indian/Alaskan Native	3	140.3
Asian or Pacific Islander	4	28.4
Black	63	52.1
Other	1	NA
White	98	24.8
Unknown	0	NA
Total	169	31.8

Montgomery County COVID-19 Cases by Ethnicity As of 10/1/20				
Ethnicity	Count	Percent	Case Rate	Rate Interpretation**
Hispanic	331	4.1%	1,910.2	1 in 53
Non-Hispanic	6,109	75.6%	1,187.7	1 in 84
Unknown	1,636	20.3%	NA	NA
Total	8,076	100%	1,518.9	1 in 66

**Rate interpretation represents the number of cases for the given population.
 Example - there is a total of 1 case for every 66 Montgomery County residents.



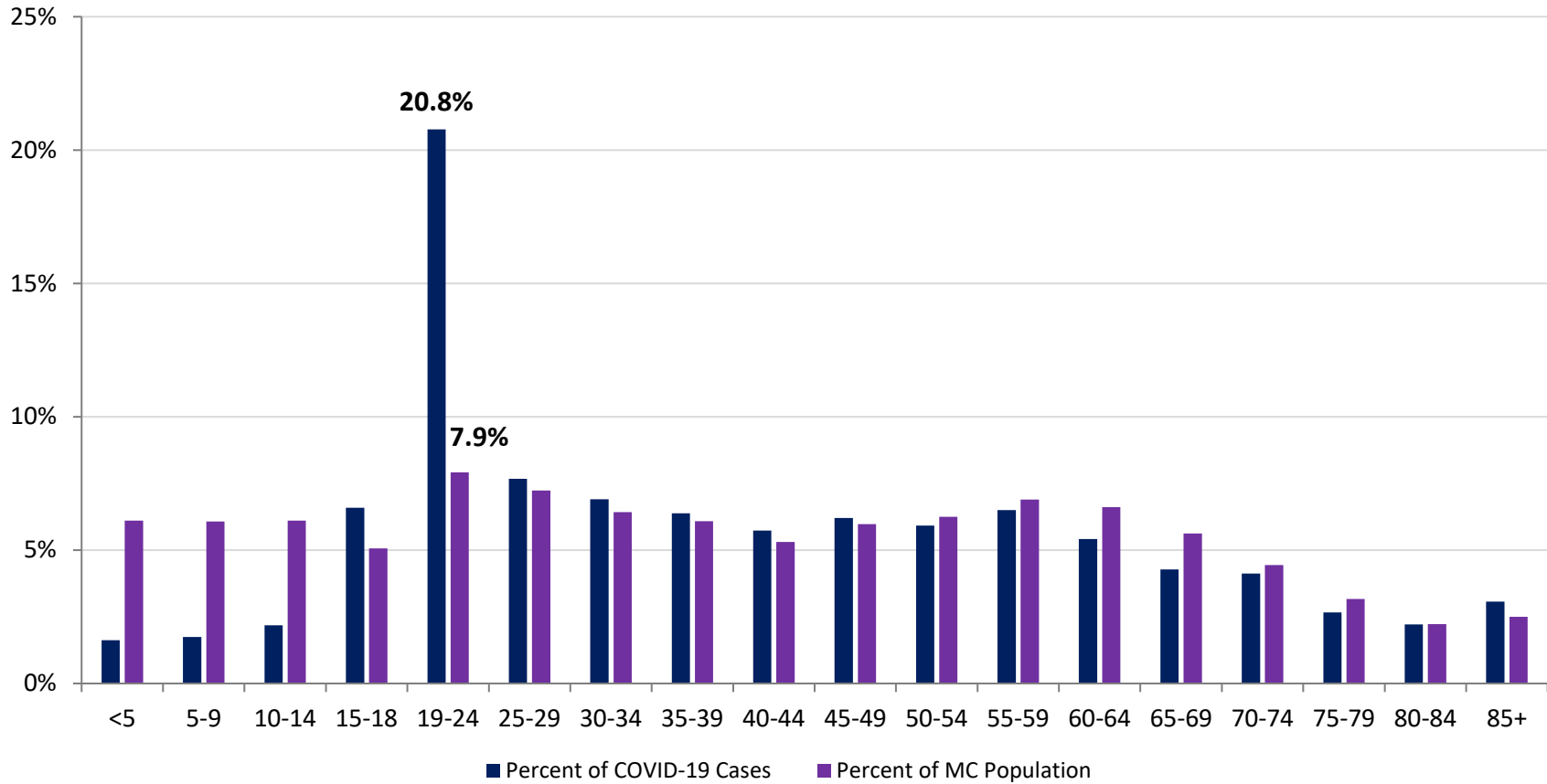
Montgomery County COVID-19 Cases by Health Care Worker Status As of 10/1/20		
Status	#	%
Health Care Worker	778	9.6%
Non-Health Care Worker	4,788	59.3%
Unknown	2,510	31.1%
Total	8,076	100%

Montgomery County COVID-19 Cases Age Range As of 10/1/20	
Stat	Age in Years
Age Range	<1 - 104
Average Age	40.4
Median Age	36.0

Montgomery County COVID-19 Cases by Age Group As of 10/1/20						
Age Group	Total Cases	Total Case Rate	Percent of COVID-19 Cases	Percent of MC Population	Current Cases*	Current Case Rate*
<5	131	401.6	1.6%	6.1%	10	30.7
5-9	141	438.0	1.7%	6.1%	18	55.9
10-14	176	548.4	2.2%	6.1%	22	68.5
15-18	532	2,014.2	6.6%	5.1%	65	246.1
19-24	1678	3,986.7	20.8%	7.9%	139	330.2
25-29	620	1,616.5	7.7%	7.2%	73	190.3
30-34	558	1,596.1	6.9%	6.4%	66	188.8
35-39	515	1,595.4	6.4%	6.1%	67	207.6
40-44	463	1,611.2	5.7%	5.3%	52	181.0
45-49	501	1,635.2	6.2%	6.0%	61	199.1
50-54	478	1,480.6	5.9%	6.2%	68	210.6
55-59	525	1,448.9	6.5%	6.9%	65	179.4
60-64	437	1,236.1	5.4%	6.6%	54	152.7
65-69	345	1,141.6	4.3%	5.6%	53	175.4
70-74	333	1,350.0	4.1%	4.4%	54	218.9
75-79	215	1,250.7	2.7%	3.2%	35	203.6
80-84	179	1,494.3	2.2%	2.2%	38	317.2
85+	248	1,853.9	3.1%	2.5%	59	441.1
Total	8,075	1,518.8	100%	100%	999	187.9

*Current Cases – cases with symptom onset in the past 21 days. Current Case Rate – current cases per 100,000.

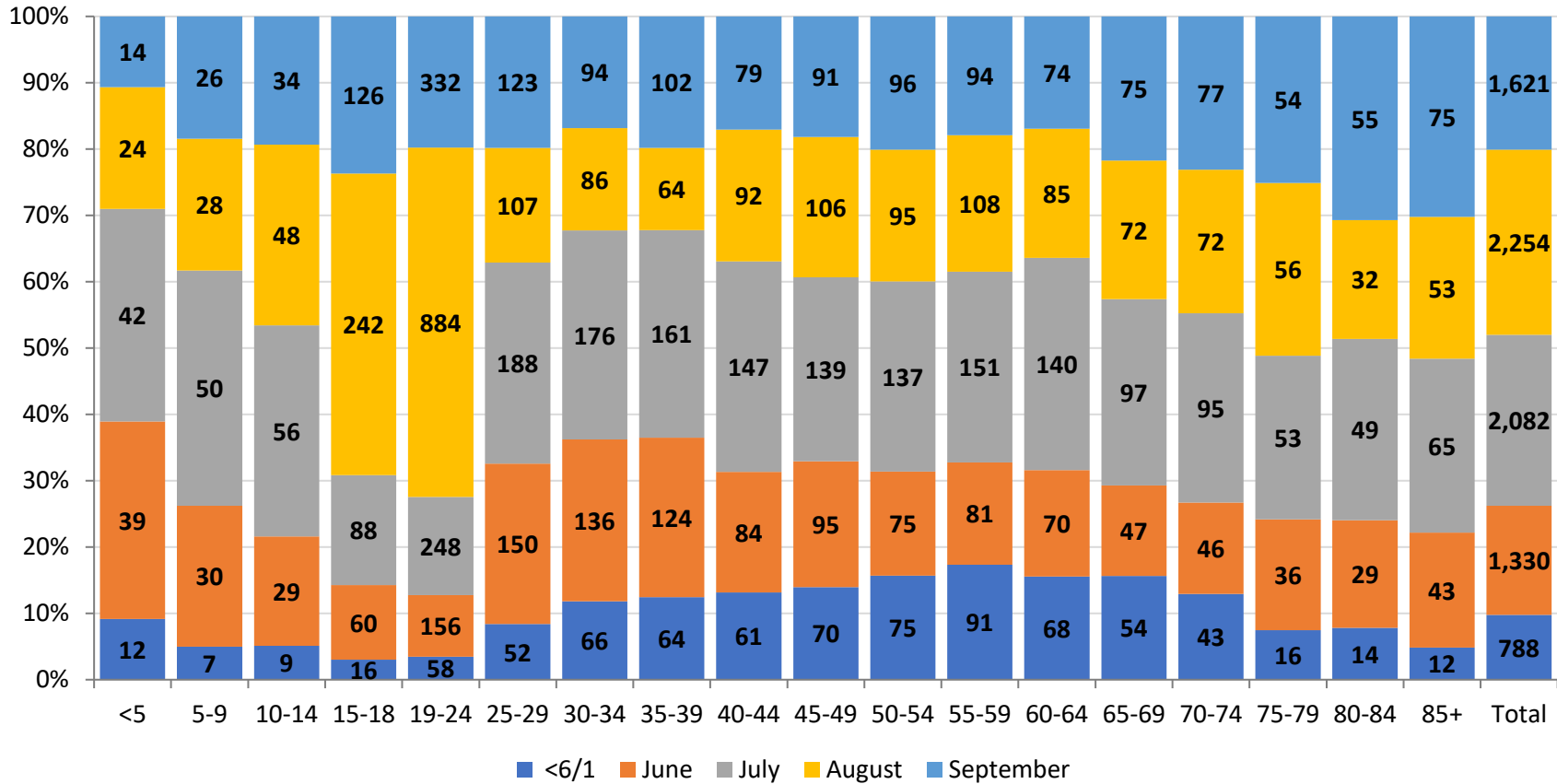
Percent of Montgomery County COVID-19 Cases by Age Group vs Percent of Population by Age Group



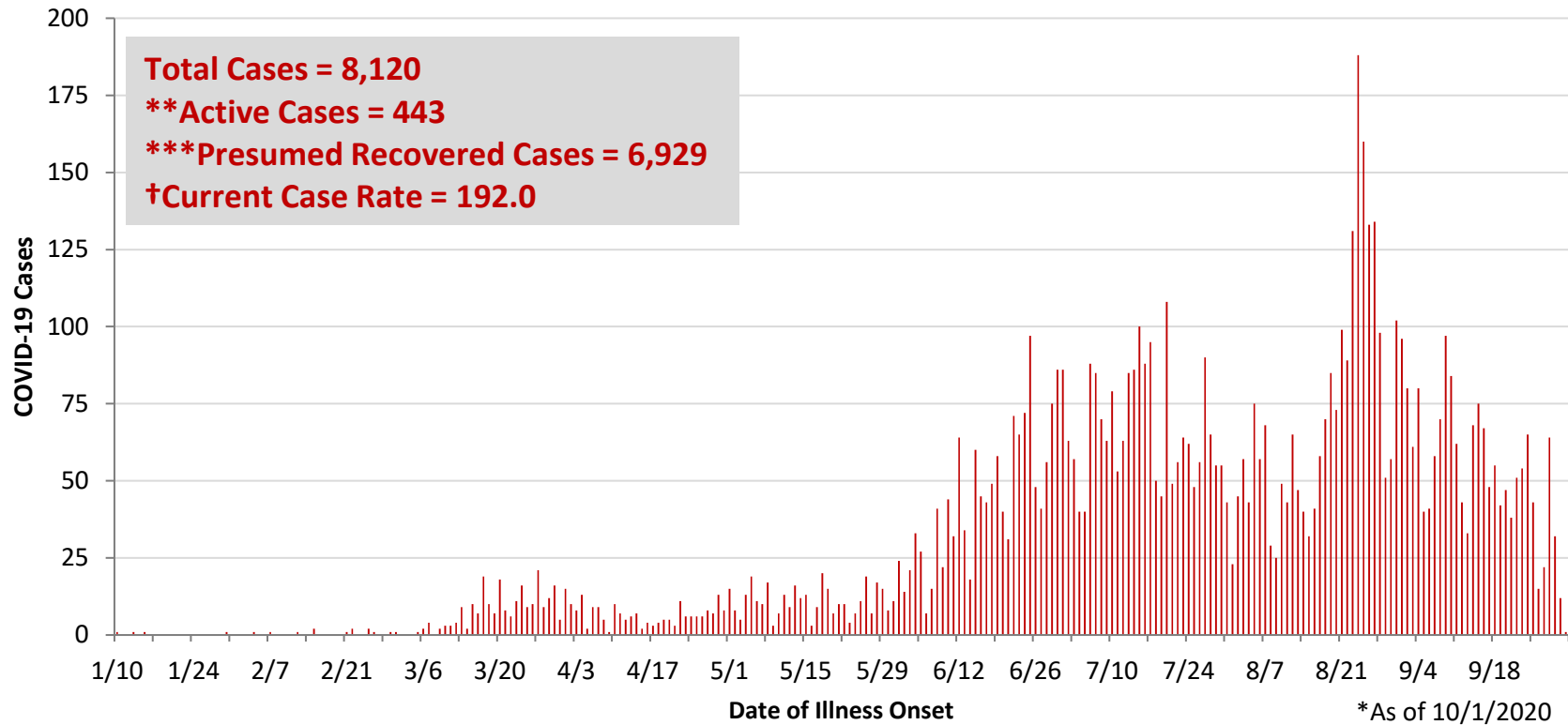
PRELIMINARY Montgomery County COVID-19 Cases by Age Group and by Month As of 10/1/20							
Age Group	Cases <6/1	Cases June	Cases July	Cases August	Cases September	Total Cases	% Change Aug to Sep
<5	12	39	42	24	14	131	-42%
5-9	7	30	50	28	26	141	-7%
10-14	9	29	56	48	34	176	-29%
15-18	16	60	88	242	126	532	-48%
19-24	58	156	248	884	332	1,678	-62%
25-29	52	150	188	107	123	620	15%
30-34	66	136	176	86	94	558	9%
35-39	64	124	161	64	102	515	59%
40-44	61	84	147	92	79	463	-14%
45-49	70	95	139	106	91	501	-14%
50-54	75	75	137	95	96	478	1%
55-59	91	81	151	108	94	525	-13%
60-64	68	70	140	85	74	437	-13%
65-69	54	47	97	72	75	345	4%
70-74	43	46	95	72	77	333	7%
75-79	16	36	53	56	54	215	-4%
80-84	14	29	49	32	55	179	72%
85+	12	43	65	53	75	248	42%
Total	788	1,330	2,082	2,254	1,621	8,075	-28%

PRELIMINARY Montgomery County COVID-19 Case Rate by Age Group and by Month As of 10/1/20							
Age Group	Case Rate <6/1	Case Rate June	Case Rate July	Case Rate August	Case Rate September	Overall Case Rate	% Change Aug to Sep
<5	36.8	119.6	128.7	73.6	42.9	401.6	-42%
5-9	21.7	93.2	155.3	87.0	80.8	438.0	-7%
10-14	28.0	90.4	174.5	149.6	105.9	548.4	-29%
15-18	60.6	227.2	333.2	916.2	477.0	2014.2	-48%
19-24	137.8	370.6	589.2	2100.3	788.8	3986.7	-62%
25-29	135.6	391.1	490.2	279.0	320.7	1616.5	15%
30-34	188.8	389.0	503.4	246.0	268.9	1596.1	9%
35-39	198.3	384.1	498.7	198.3	316.0	1595.4	59%
40-44	212.3	292.3	511.5	320.1	274.9	1611.2	-14%
45-49	228.5	310.1	453.7	346.0	297.0	1635.2	-14%
50-54	232.3	232.3	424.3	294.3	297.4	1480.6	1%
55-59	251.1	223.5	416.7	298.1	259.4	1448.9	-13%
60-64	192.3	198.0	396.0	240.4	209.3	1236.1	-13%
65-69	178.7	155.5	321.0	238.2	248.2	1141.6	4%
70-74	174.3	186.5	385.1	291.9	312.2	1350.0	7%
75-79	93.1	209.4	308.3	325.8	314.1	1250.7	-4%
80-84	116.9	242.1	409.0	267.1	459.1	1494.3	72%
85+	89.7	321.4	485.9	396.2	560.7	1853.9	42%
Total	148.2	250.1	391.6	423.9	304.9	1,518.8	-28%

COVID-19 Cases by Age Group and Month as of 10/1/2020



**PRELIMINARY COVID-19 Cases by Date of Illness Onset
Montgomery County, 1/10/20 - 10/1/20***

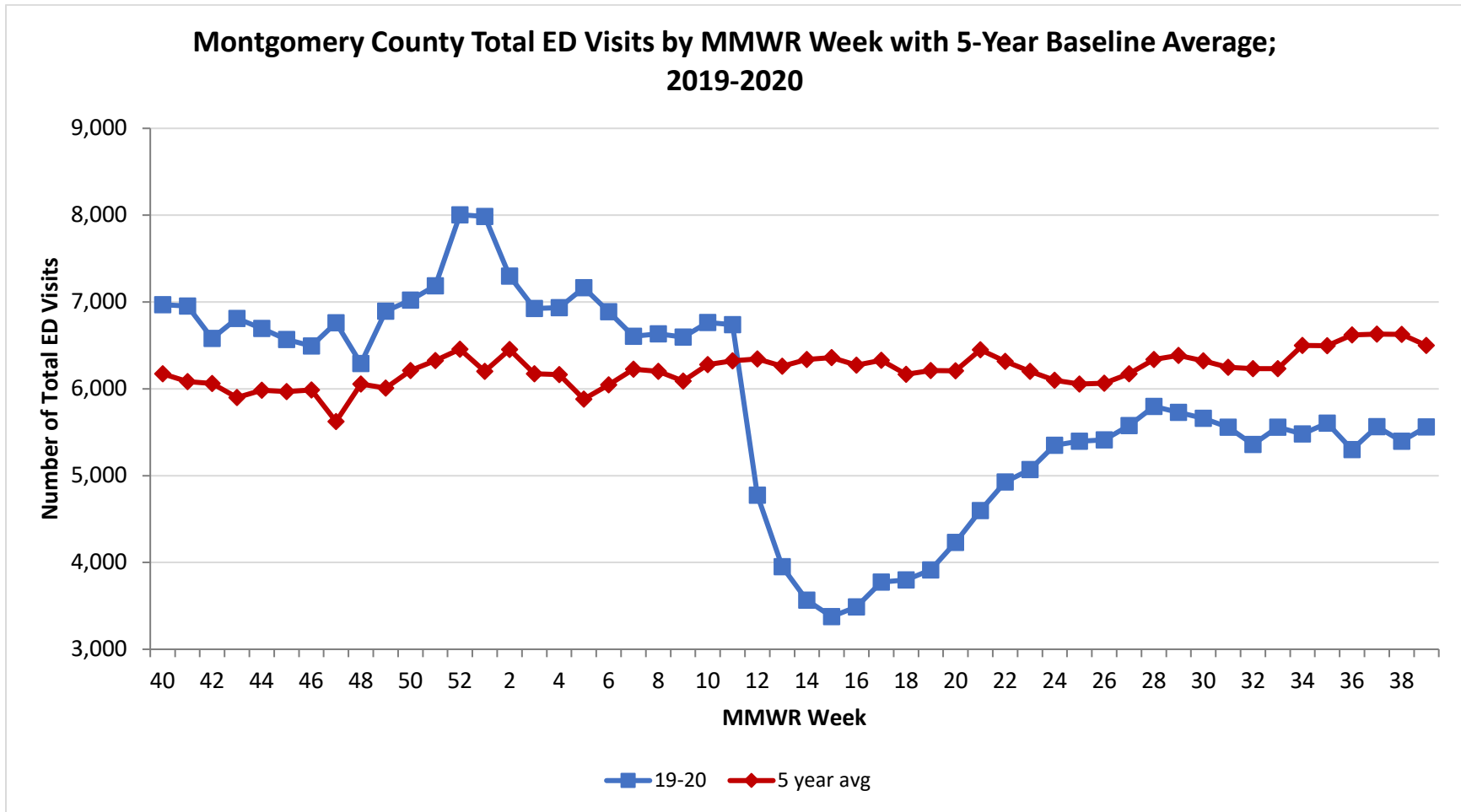


**Active cases are based on the reported illness onset date (using a 10-day window) of reported cases.

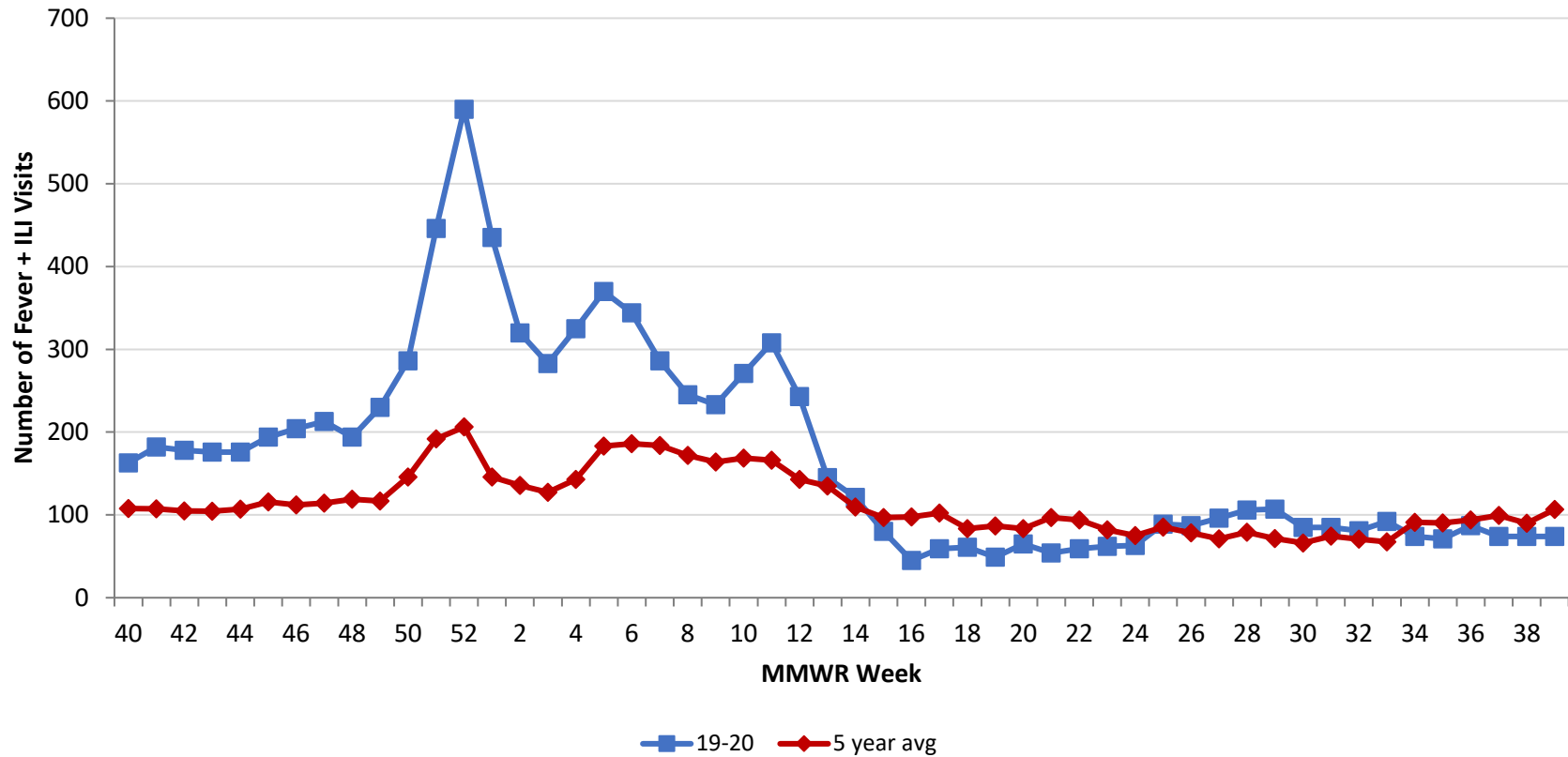
***Presumed recovered is defined as cases with a symptom onset date >21 days prior who are not deceased.

†Current Case Rate – current cases (symptom onset past 21 days) per 100,000.

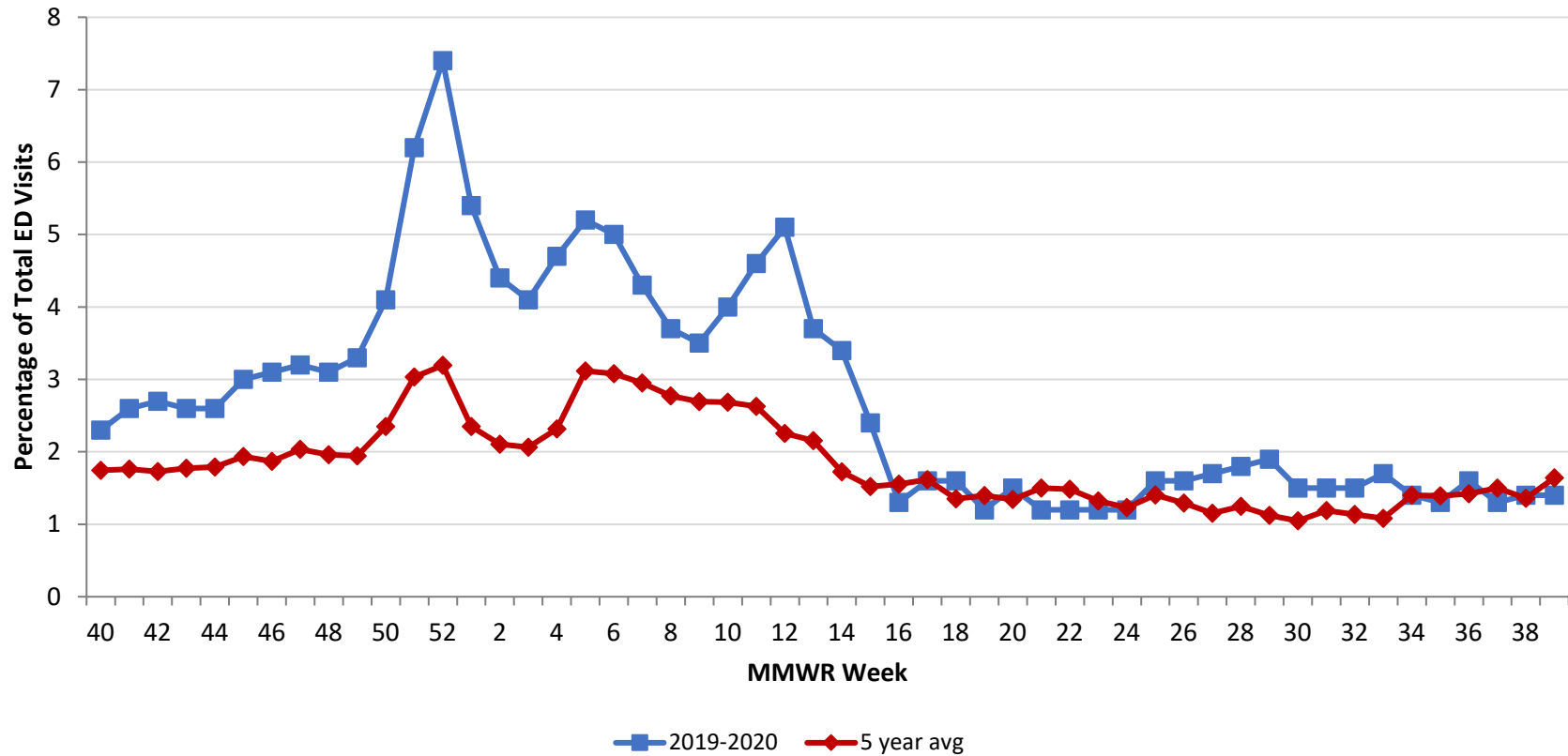
Source: EpiCenter Syndromic Surveillance, Health Monitoring Systems



Montgomery County Fever + ILI Specified ED Visits by MMWR Week with 5-Year Baseline Average; 2019-2020



**Montgomery County Fever + ILI Specified ED Visits (% of Total Visits) by MMWR Week
with 5-Year Baseline Average; 2019-2020**



# Total Visits		
MMWR Week	19-20	5-Year Average
4	6,935	6164.0
5	7,164	5881.8
6	6,888	6045.0
7	6,605	6226.8
8	6,633	6200.6
9	6,597	6088.2
10	6,763	6279.6
11	6,738	6321.6
12	4,775	6345.0
13	3,952	6259.8
14	3,565	6337.4
15	3,376	6360.6
16	3,489	6273.4
17	3,774	6327.8
18	3,798	6165.8
19	3,915	6209.8
20	4,231	6208.4
21	4,598	6,449.6
22	4,928	6,315.4
23	5,070	6,201.0
24	5,350	6,098.4
25	5,398	6,055.8
26	5,412	6,063.2
27	5,577	6,173.0
28	5,797	6,339.0
29	5,728	6384.6
30	5,661	6,322.0
31	5,557	6,247.2
32	5,359	6232.8
33	5,558	6,233.8
34	5,481	6,501.0
35	5,606	6,496.2
36	5,301	6,621.0
37	5,563	6,630.2
38	5,396	6,627.8
39	5,560	6,500.4

# Fever + ILI Visits		
MMWR Week	19-20	5-Year Average
4	325	142.8
5	370	183.2
6	344	186.2
7	286	183.8
8	245	171.8
9	233	164.0
10	271	168.6
11	308	166.2
12	243	143.0
13	145	134.8
14	121	109.4
15	80	96.8
16	45	97.6
17	59	102.4
18	61	83.4
19	49	86.8
20	65	83.4
21	54	96.8
22	59	93.8
23	62	82.0
24	63	75.0
25	89	85.2
26	87	78.4
27	96	71.2
28	106	79.2
29	107	71.6
30	85	66.2
31	85	74.2
32	81	70.8
33	92	67.4
34	74	91.0
35	71	90.4
36	87	94.0
37	74	99.4
38	74	90.0
39	74	106.6

% Fever + ILI Visits		
MMWR Week	19-20	5-Year Average
4	4.7	2.3
5	5.2	3.1
6	5	3.1
7	4.3	3.0
8	3.7	2.8
9	3.5	2.7
10	4	2.7
11	4.6	2.6
12	5.1	2.3
13	3.7	2.2
14	3.4	1.7
15	2.4	1.5
16	1.3	1.6
17	1.6	1.6
18	1.6	1.4
19	1.2	1.4
20	1.5	1.3
21	1.2	1.5
22	1.2	1.5
23	1.2	1.3
24	1.2	1.2
25	1.6	1.4
26	1.6	1.3
27	1.7	1.2
28	1.8	1.2
29	1.9	1.1
30	1.5	1.0
31	1.5	1.2
32	1.5	1.1
33	1.7	1.1
34	1.4	1.4
35	1.3	1.4
36	1.6	1.4
37	1.3	1.5
38	1.4	1.4
39	1.1	1.6