



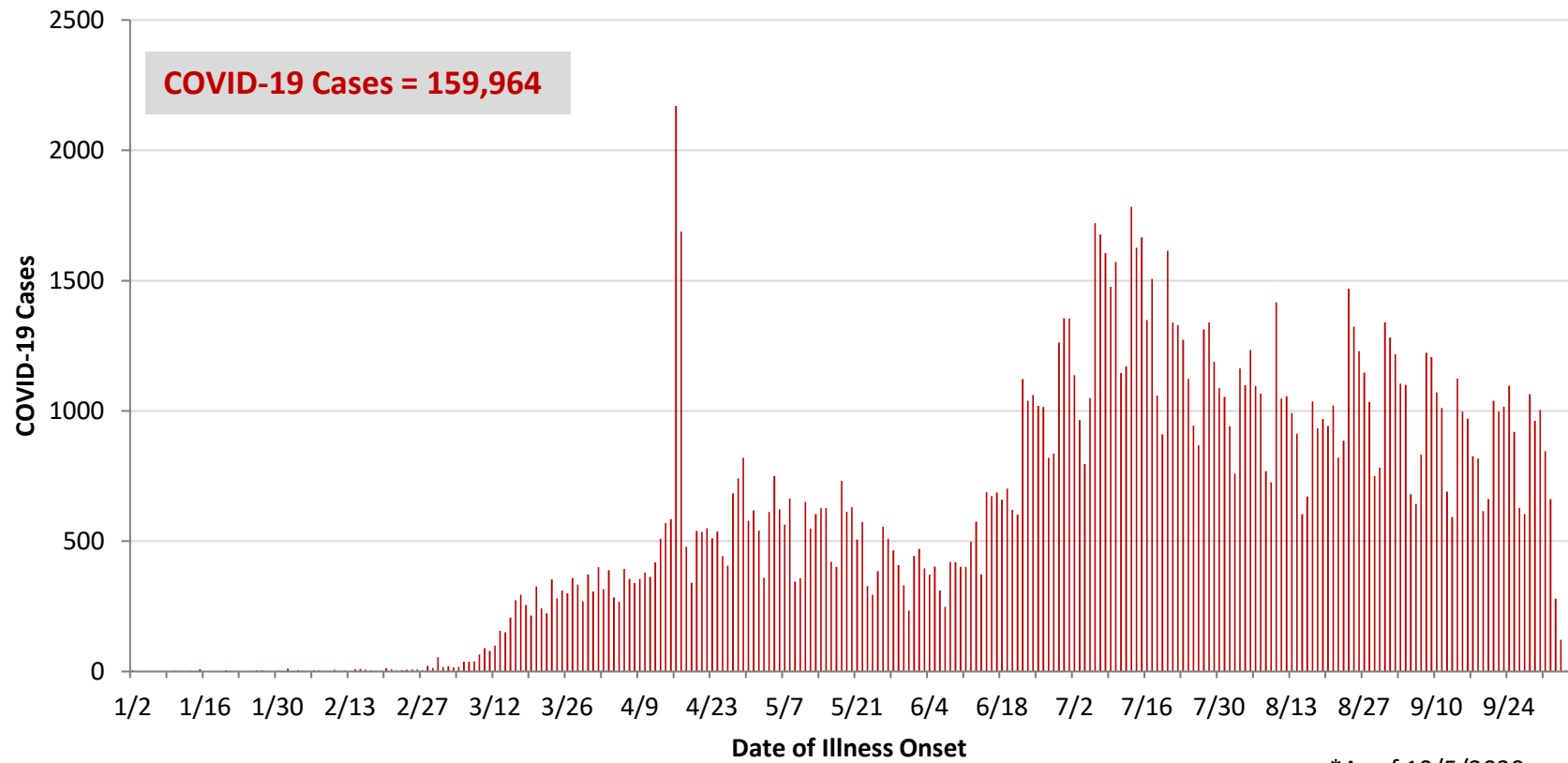
**Ohio, West Central Ohio (WCO), and Montgomery County COVID-19 Cases
As of 10/5/20**

Source: The State of Ohio COVID-19 Dashboard, Ohio Department of Health

Ohio:

Preliminary COVID-19 Cases Ohio, As of 10/5/2020		
Sex	# Cases	% Cases
Female	83,497	52%
Male	75,230	47%
Unknown	1,237	1%
Total	159,964	100%
Age Group		
Age Group	# Cases	% Cases
0-19	19,653	12%
20-29	34,598	22%
30-39	24,042	15%
40-49	21,437	13%
50-59	22,433	14%
60-69	16,907	11%
70-79	10,860	7%
80+	9,912	6%
Unknown	122	0%
Total	159,964	100%
Hospitalized		
Hospitalized	15,840	9.9%
Deaths		
Deaths	4,931	3.1%
Age Group		
Age Group	Deaths	% of Deaths
0-19	2	0%
20-29	13	0%
30-39	36	1%
40-49	82	2%
50-59	282	6%
60-69	687	14%
70-79	1,245	25%
80+	2,584	52%
Total	4,931	100%

**PRELIMINARY COVID-19 Cases by Date of Illness Onset
Ohio, 1/2/20 - 10/5/20***

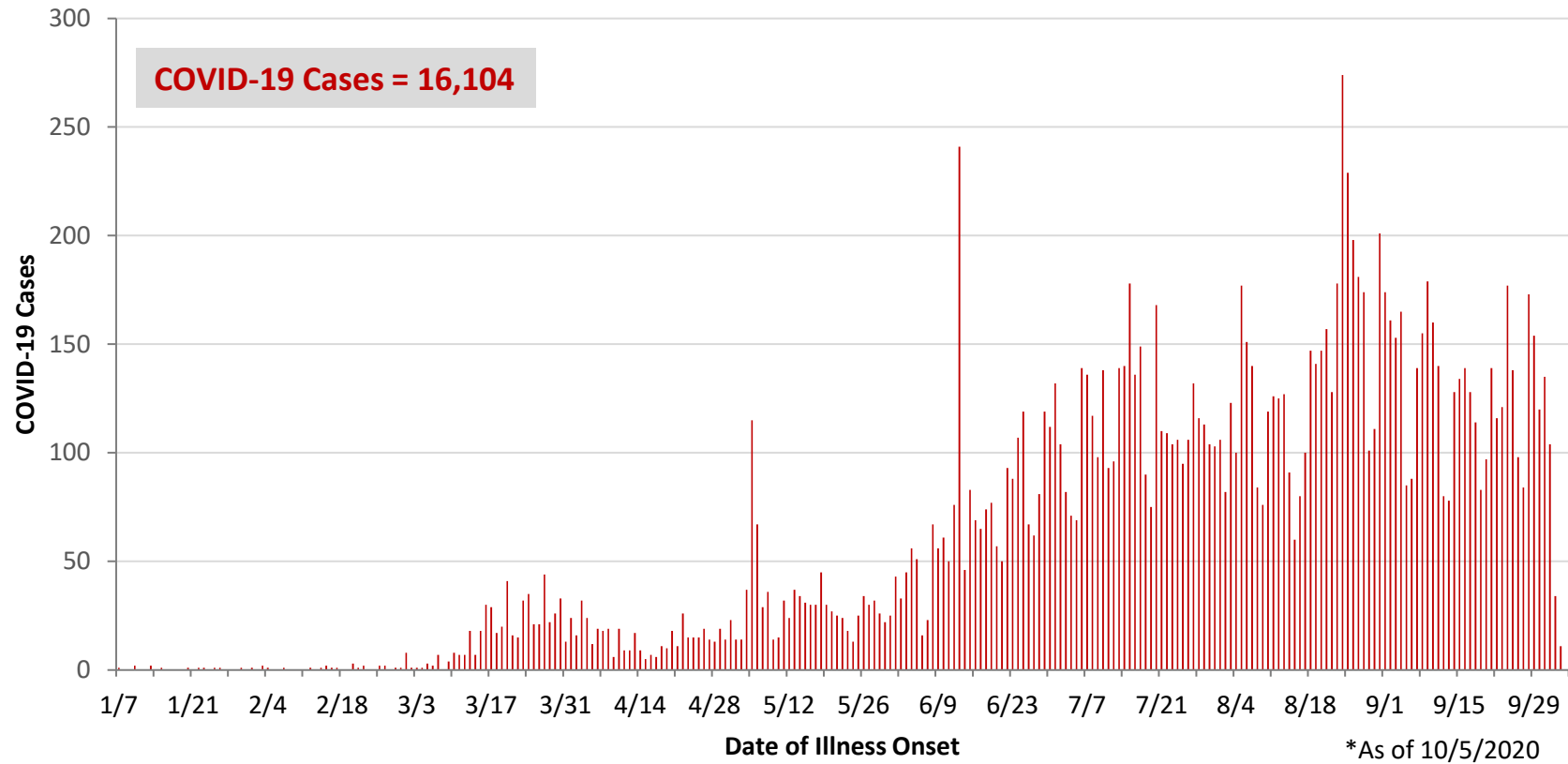


*As of 10/5/2020

WCO:

Preliminary COVID-19 Cases West Central Ohio, As of 10/5/2020		
County	# Cases	% Cases
Champaign	328	2%
Clark	1,959	12%
Darke	908	6%
Greene	1,688	10%
Miami	1,605	10%
Montgomery	8,417	52%
Preble	476	3%
Shelby	723	4%
Total	16,104	100%
Sex		
Sex	# Cases	% Cases
Female	8,901	55%
Male	6,993	43%
Unknown	210	1%
Total	16,104	100%
Age Group		
Age Group	# Cases	% Cases
0-19	2,255	14%
20-29	3,462	21%
30-39	2,156	13%
40-49	1,981	12%
50-59	2,185	14%
60-69	1,753	11%
70-79	1,249	8%
80+	1,063	7%
Total	16,104	100%
Hospitalized	1,628	10.1%
Deaths	392	2.4%
Age Group		
Age Group	Deaths	% of Deaths
0-19	1	0%
20-29	3	1%
30-39	4	1%
40-49	9	2%
50-59	21	5%
60-69	54	14%
70-79	91	23%
80+	209	53%
Total	392	100%

**PRELIMINARY COVID-19 Cases by Date of Illness Onset
West Central Ohio, 1/7/20 - 10/5/20***



Montgomery County:

Preliminary COVID-19 Cases Montgomery County, As of 10/5/2020		
Sex	# Cases	% Cases
Female	4,730	56%
Male	3,618	43%
Unknown	69	1%
Total	8,417	100%
Age Group		
Age Group	# Cases	% Cases
0-19	1,381	16%
20-29	2,005	24%
30-39	1,107	13%
40-49	1,005	12%
50-59	1,051	12%
60-69	834	10%
70-79	584	7%
80+	449	5%
Unknown	1	0%
Total	8,417	100%
Hospitalized		
Hospitalized	981	11.7%
Deaths		
Deaths	181	2.2%
Age Group		
Age Group	Deaths	% of Deaths
0-19	1	1%
20-29	3	2%
30-39	3	2%
40-49	7	4%
50-59	13	7%
60-69	30	17%
70-79	45	25%
80+	79	44%
Total	181	100%

Age Group	Hospitalizations	% of Age Group Cases
0-19	35	2.5%
20-29	54	2.7%
30-39	82	7.4%
40-49	96	9.6%
50-59	169	16.1%
60-69	198	23.7%
70-79	207	35.4%
80+	140	31.2%
Total	981	11.7%

Source: Ohio Disease Reporting System, ODH

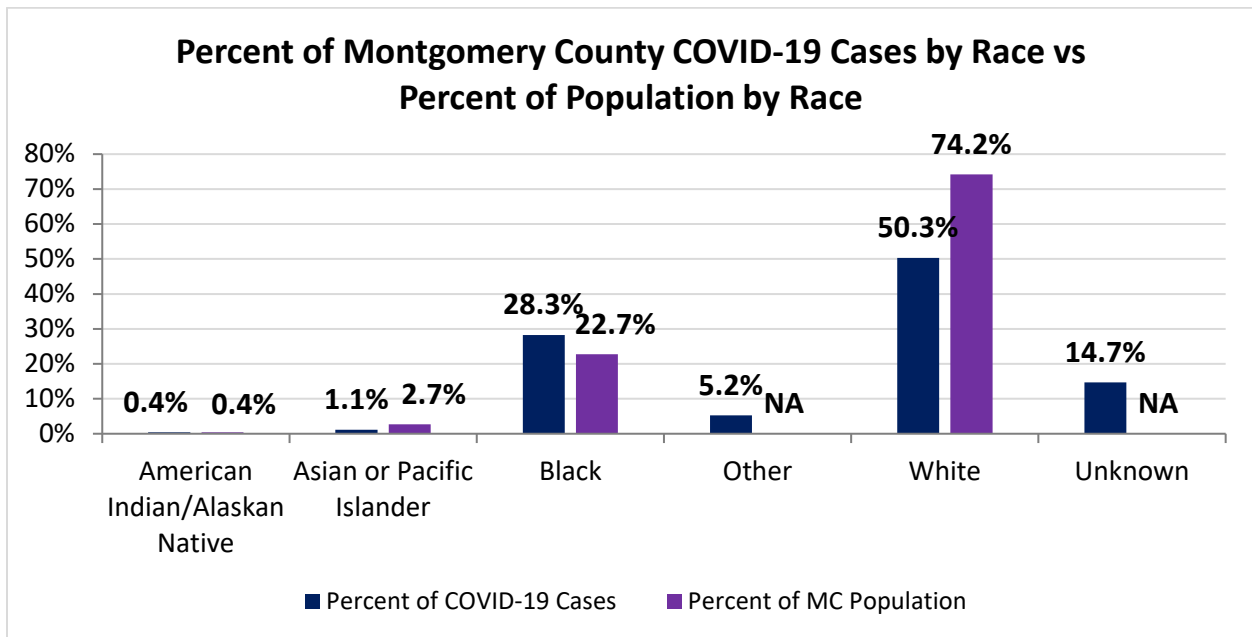
Note. All rates are per 100,000 population.

Montgomery County COVID-19 Cases by Race As of 10/5/20				
Race	Count	Percent	Case Rate	Rate Interpretation**
American Indian/Alaskan Native (AI/AN)*	33	0.4%	1,542.8	1 in 65
Asian	91	1.1%	645.5	1 in 155
Black	2,349	28.3%	1,942.8	1 in 52
Other	435	5.2%	NA	NA
White	4,180	50.3%	1,059.5	1 in 94
Unknown	1,224	14.7%	NA	NA
Total	8,312	100%	1,563.3	1 in 64

*Note. AI/ANs account for 0.4% of Montgomery County's population, and therefore, rates for this population will be large and may be misleading.

**Rate interpretation represents the number of cases for the given population.

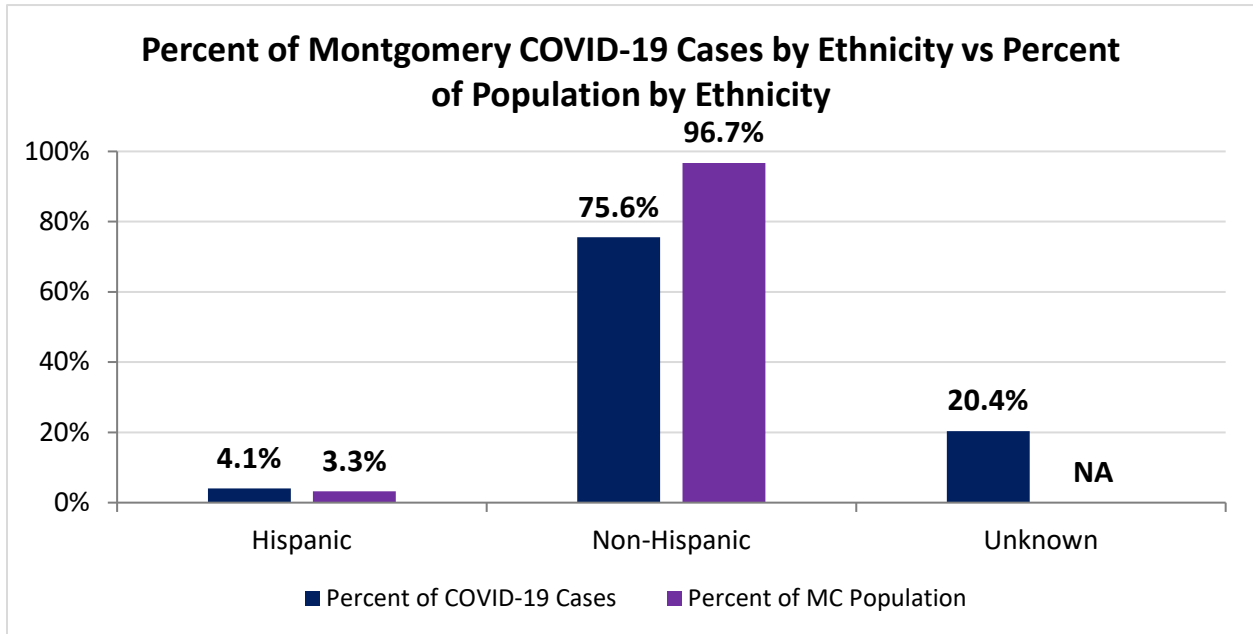
Example - there is a total of 1 case for every 64 Montgomery County residents.



Montgomery County COVID-19 Deaths by Race as of 10/5/2020		
Race	Count	Death Rate
American Indian/Alaskan Native	3	140.3
Asian or Pacific Islander	4	28.4
Black	65	53.8
Other	1	NA
White	109	27.6
Unknown	0	NA
Total	182	34.2

Montgomery County COVID-19 Cases by Ethnicity As of 10/5/20				
Ethnicity	Count	Percent	Case Rate	Rate Interpretation**
Hispanic	337	4.1%	1,944.8	1 in 51
Non-Hispanic	6,283	75.6%	1,221.5	1 in 82
Unknown	1,692	20.4%	NA	NA
Total	8,312	100%	1,563.3	1 in 64

**Rate interpretation represents the number of cases for the given population.
 Example - there is a total of 1 case for every 64 Montgomery County residents.



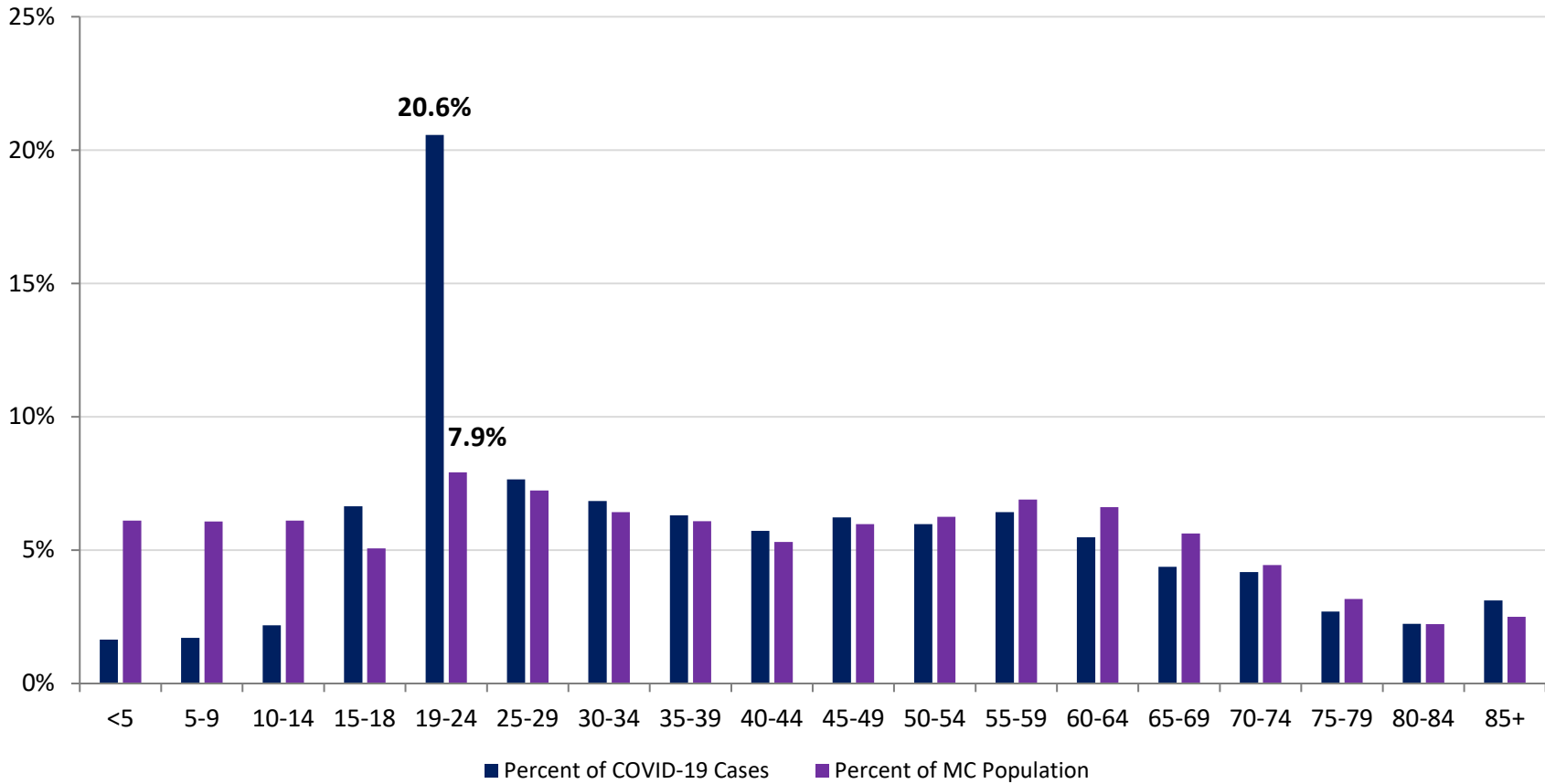
Montgomery County COVID-19 Cases by Health Care Worker Status As of 10/5/20		
Status	#	%
Health Care Worker	801	9.6%
Non-Health Care Worker	4,922	59.2%
Unknown	2,589	31.1%
Total	8,312	100%

Montgomery County COVID-19 Cases Age Range As of 10/5/20	
Stat	Age in Years
Age Range	<1 - 104
Average Age	40.6
Median Age	37.0

Montgomery County COVID-19 Cases by Age Group As of 10/5/20						
Age Group	Total Cases	Total Case Rate	Percent of COVID-19 Cases	Percent of MC Population	Current Cases*	Current Case Rate*
<5	137	420.0	1.6%	6.1%	15	46.0
5-9	142	441.1	1.7%	6.1%	15	46.6
10-14	181	564.0	2.2%	6.1%	26	81.0
15-18	552	2,089.9	6.6%	5.1%	69	261.2
19-24	1709	4,060.3	20.6%	7.9%	126	299.4
25-29	636	1,658.2	7.7%	7.2%	71	185.1
30-34	569	1,627.5	6.8%	6.4%	59	168.8
35-39	524	1,623.2	6.3%	6.1%	61	189.0
40-44	476	1,656.4	5.7%	5.3%	55	191.4
45-49	518	1,690.7	6.2%	6.0%	69	225.2
50-54	497	1,539.4	6.0%	6.2%	73	226.1
55-59	534	1,473.8	6.4%	6.9%	60	165.6
60-64	456	1,289.8	5.5%	6.6%	61	172.5
65-69	364	1,204.5	4.4%	5.6%	62	205.2
70-74	347	1,406.8	4.2%	4.4%	54	218.9
75-79	224	1,303.1	2.7%	3.2%	38	221.1
80-84	186	1,552.7	2.2%	2.2%	39	325.6
85+	259	1,936.2	3.1%	2.5%	55	411.2
Total	8,311	1,563.1	100%	100%	1,008	189.6

*Current Cases – cases with symptom onset in the past 21 days. Current Case Rate – current cases per 100,000.

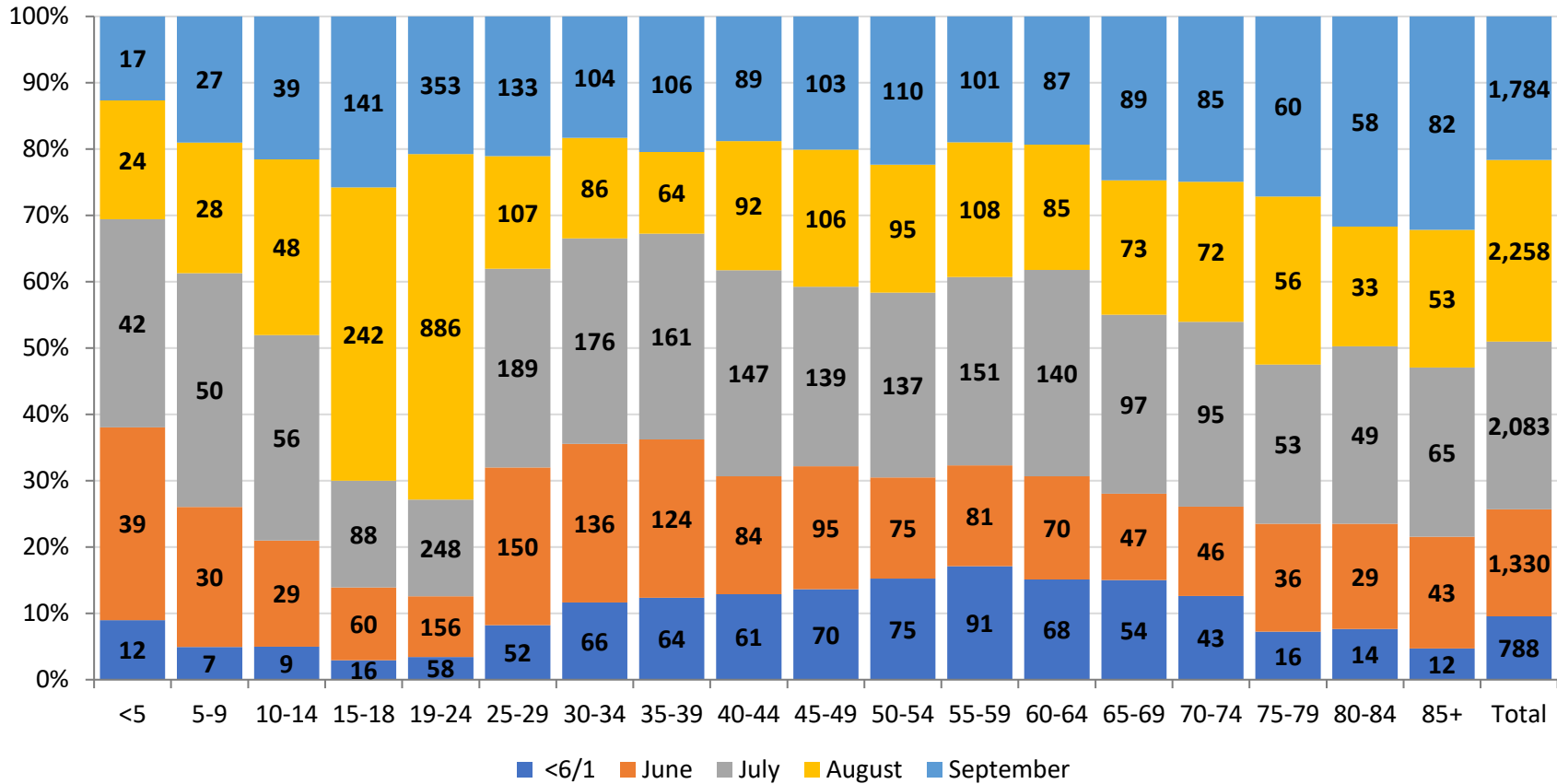
Percent of Montgomery County COVID-19 Cases by Age Group vs Percent of Population by Age Group



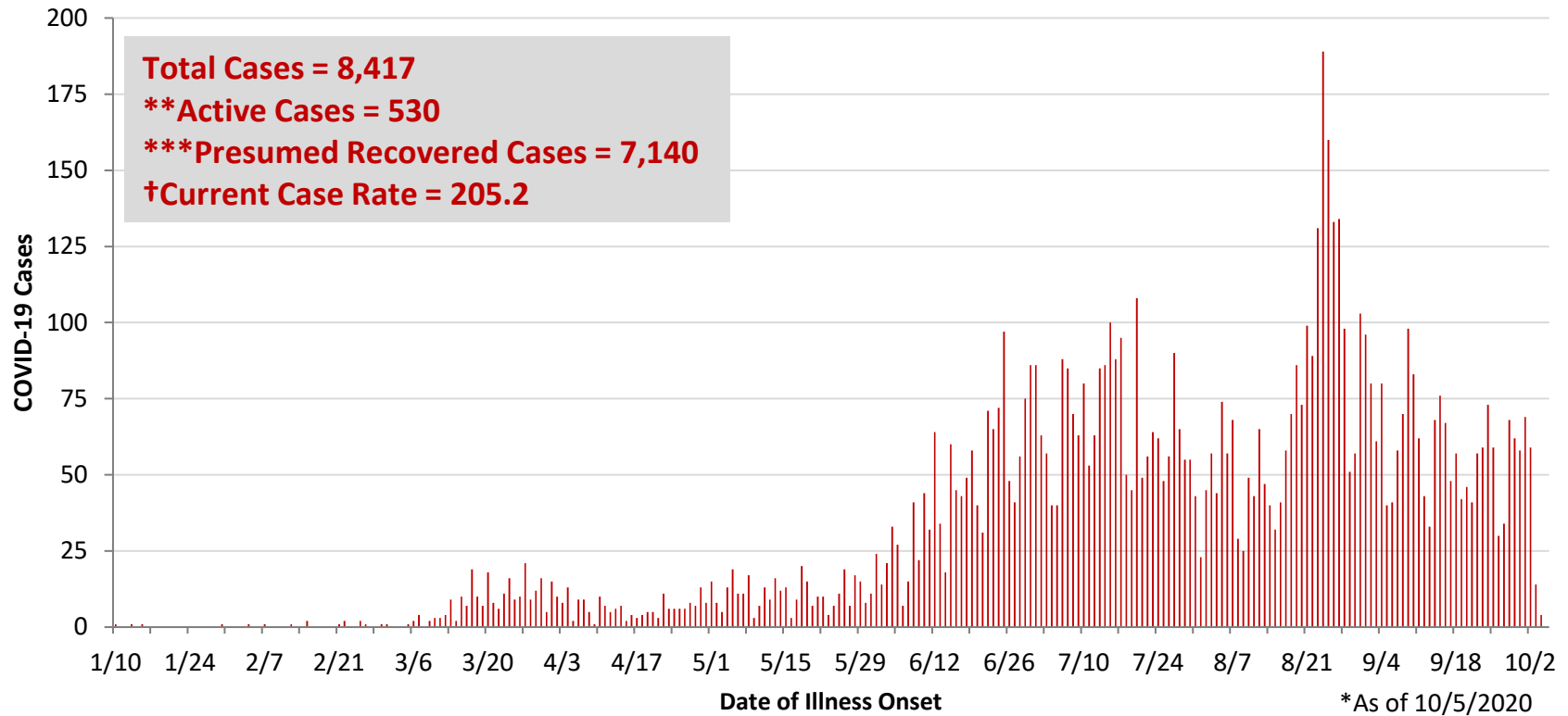
PRELIMINARY Montgomery County COVID-19 Cases by Age Group and by Month As of 10/5/20							
Age Group	Cases <6/1	Cases June	Cases July	Cases August	Cases September	Total Cases	% Change Aug to Sep
<5	12	39	42	24	17	134	-29%
5-9	7	30	50	28	27	142	-4%
10-14	9	29	56	48	39	181	-19%
15-18	16	60	88	242	141	547	-42%
19-24	58	156	248	886	353	1,701	-60%
25-29	52	150	189	107	133	631	24%
30-34	66	136	176	86	104	568	21%
35-39	64	124	161	64	106	519	66%
40-44	61	84	147	92	89	473	-3%
45-49	70	95	139	106	103	513	-3%
50-54	75	75	137	95	110	492	16%
55-59	91	81	151	108	101	532	-6%
60-64	68	70	140	85	87	450	2%
65-69	54	47	97	73	89	360	22%
70-74	43	46	95	72	85	341	18%
75-79	16	36	53	56	60	221	7%
80-84	14	29	49	33	58	183	76%
85+	12	43	65	53	82	255	55%
Total	788	1,330	2,083	2,258	1,784	8,243	-21%

PRELIMINARY Montgomery County COVID-19 Case Rate by Age Group and by Month As of 10/5/20							
Age Group	Case Rate <6/1	Case Rate June	Case Rate July	Case Rate August	Case Rate September	Overall Case Rate	% Change Aug to Sep
<5	36.8	119.6	128.7	73.6	52.1	410.8	-29%
5-9	21.7	93.2	155.3	87.0	83.9	441.1	-4%
10-14	28.0	90.4	174.5	149.6	121.5	564.0	-19%
15-18	60.6	227.2	333.2	916.2	533.8	2070.9	-42%
19-24	137.8	370.6	589.2	2105.0	838.7	4041.3	-60%
25-29	135.6	391.1	492.8	279.0	346.8	1645.2	24%
30-34	188.8	389.0	503.4	246.0	297.5	1624.7	21%
35-39	198.3	384.1	498.7	198.3	328.4	1607.8	66%
40-44	212.3	292.3	511.5	320.1	309.7	1646.0	-3%
45-49	228.5	310.1	453.7	346.0	336.2	1674.3	-3%
50-54	232.3	232.3	424.3	294.3	340.7	1523.9	16%
55-59	251.1	223.5	416.7	298.1	278.7	1468.2	-6%
60-64	192.3	198.0	396.0	240.4	246.1	1272.9	2%
65-69	178.7	155.5	321.0	241.6	294.5	1191.2	22%
70-74	174.3	186.5	385.1	291.9	344.6	1382.5	18%
75-79	93.1	209.4	308.3	325.8	349.0	1285.6	7%
80-84	116.9	242.1	409.0	275.5	484.2	1527.7	76%
85+	89.7	321.4	485.9	396.2	613.0	1906.3	55%
Total	148.2	250.1	391.8	424.7	335.5	1,550.3	-21%

COVID-19 Cases by Age Group and Month as of 10/5/2020



**PRELIMINARY COVID-19 Cases by Date of Illness Onset
Montgomery County, 1/10/20 - 10/5/20***

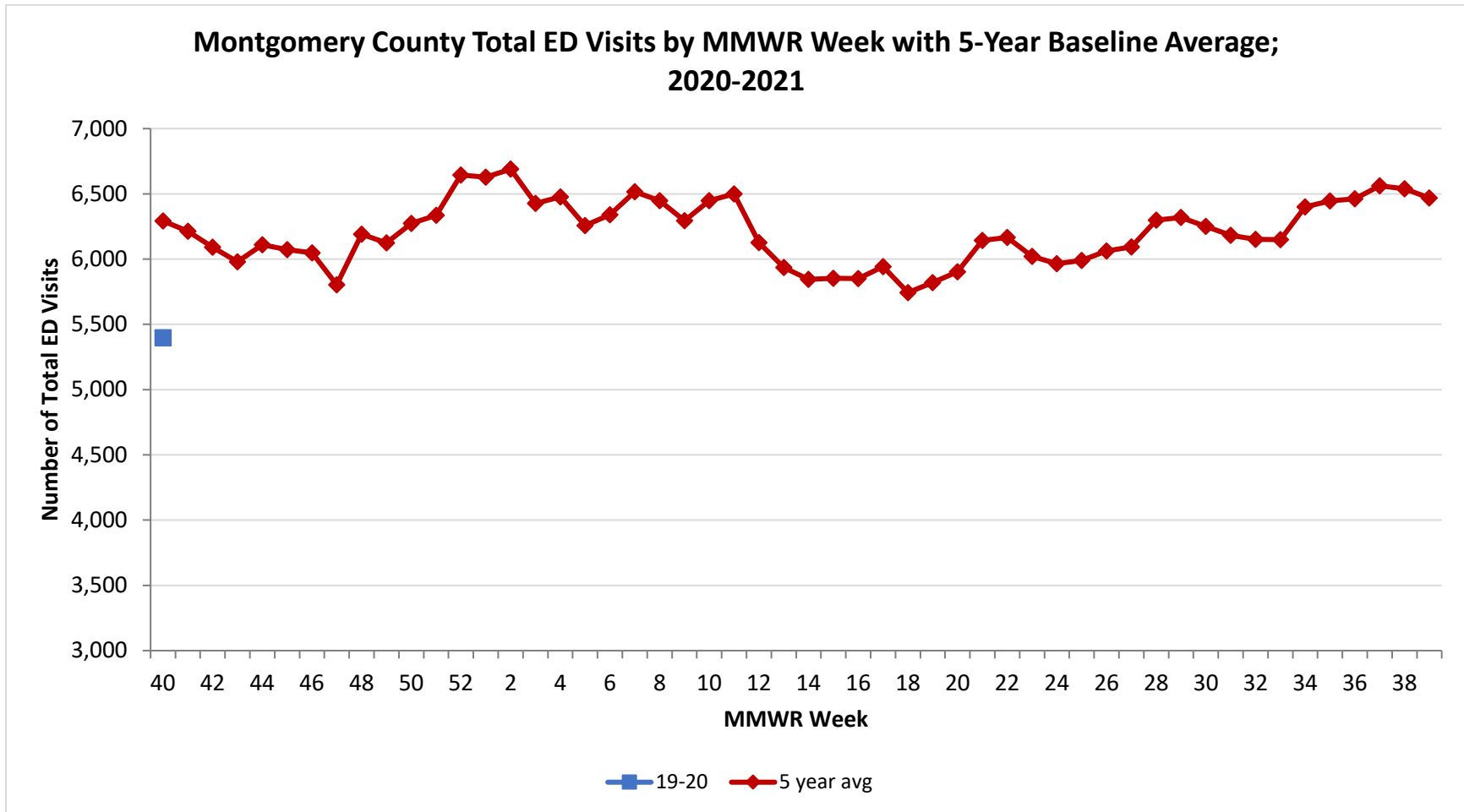


**Active cases are based on the reported illness onset date (using a 10-day window) of reported cases.

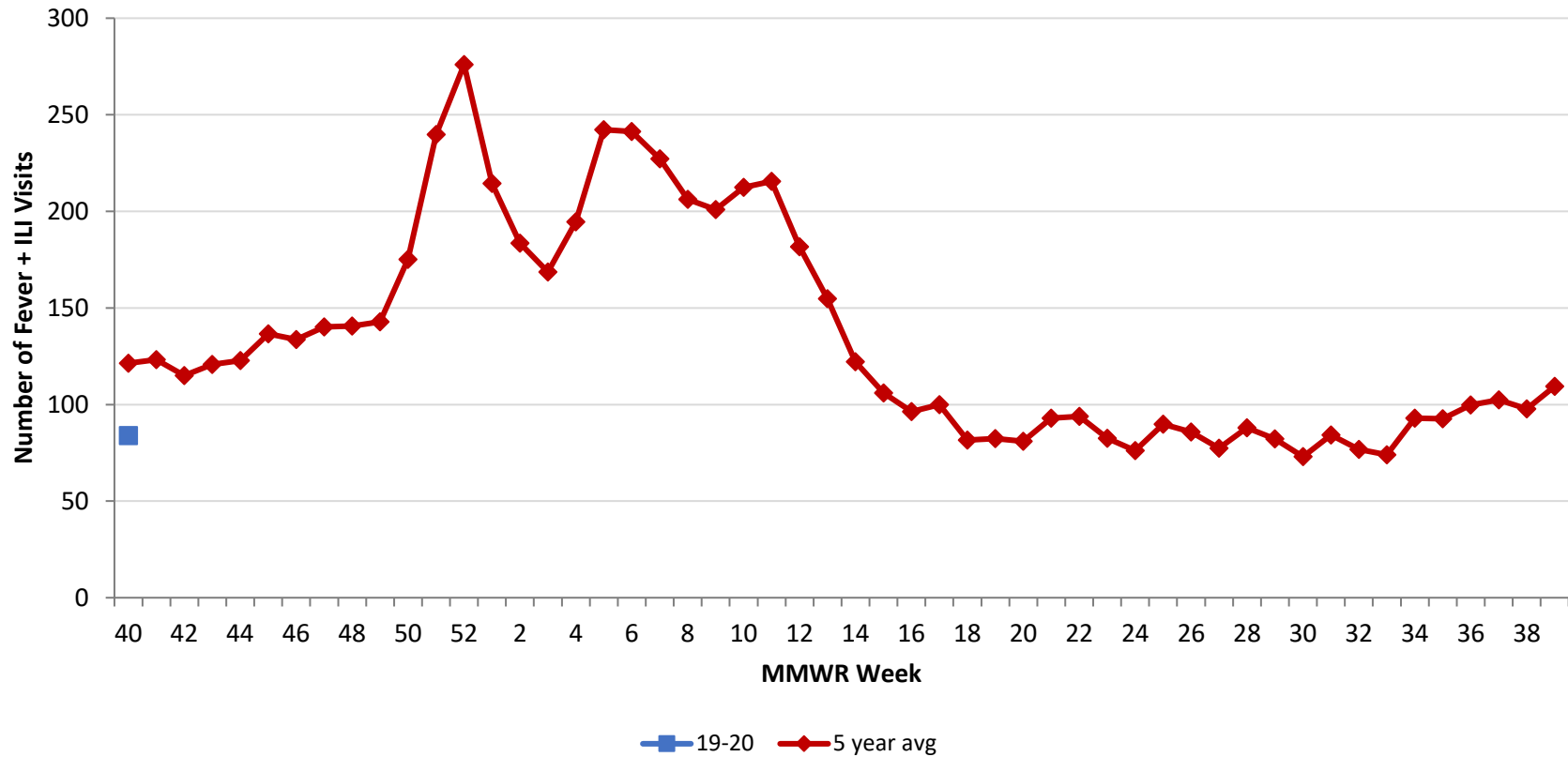
***Presumed recovered is defined as cases with a symptom onset date >21 days prior who are not deceased.

†Current Case Rate – current cases (symptom onset past 21 days) per 100,000.

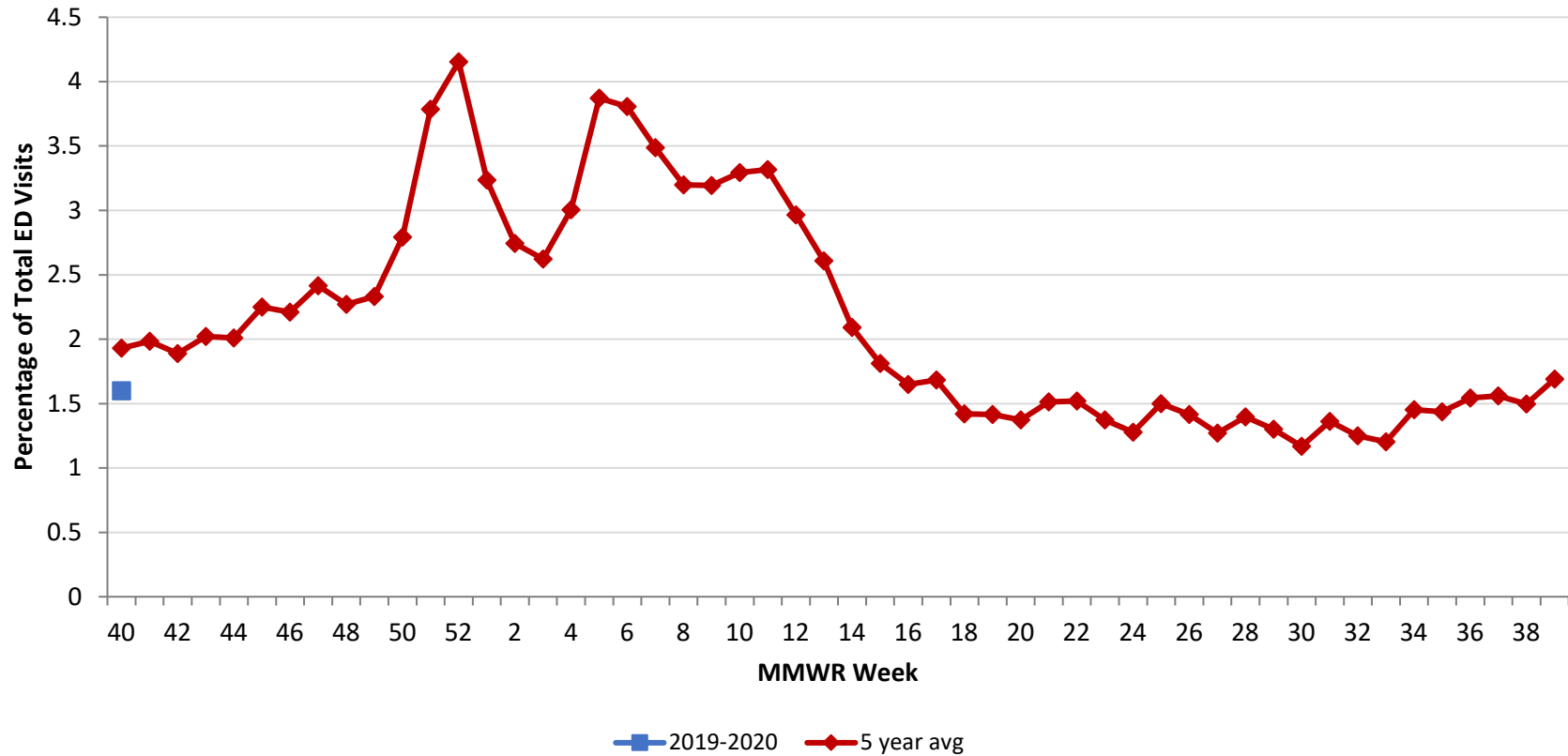
Source: EpiCenter Syndromic Surveillance, Health Monitoring Systems



Montgomery County Fever + ILI Specified ED Visits by MMWR Week with 5-Year Baseline Average; 2020-2021



Montgomery County Fever + ILI Specified ED Visits (% of Total Visits) by MMWR Week with 5-Year Baseline Average; 2020-2021



# Total Visits		
MMWR Week	20-21	5-Year Average
40	5,397	6,293.0
41		6,213.8
42		6,091.6
43		5,980.2
44		6,109.2
45		6,072.2
46		6,047.6
47		5,804.2
48		6,191.8
49		6,125.0
50		6,274.6
51		6,335.0
52		6,644.2
1		6,628.0
2		6,689.2
3		6,427.5
4		6,476.0
5		6,257.4
6		6,340.2
7		6,516.2
8		6,447.2
9		6,294.6
10		6,448.6
11		6,500.6
12		6,126.4
13		5,935.4
14		5,844.6
15		5,853.0
16		5,850.4
17		5,942.4
18		5,744.0
19		5,820.6
20		5,902.8
21		6,142.4
22		6,166.6
23		6,020.4

# Fever + ILI Visits		
MMWR Week	20-21	5-Year Average
40	84	121.4
41		123.2
42		115.0
43		120.8
44		122.8
45		136.6
46		133.6
47		140.2
48		140.6
49		142.8
50		175.2
51		239.8
52		276.0
1		214.4
2		183.6
3		168.6
4		194.6
5		242.2
6		241.4
7		227.2
8		206.2
9		201.0
10		212.4
11		215.6
12		181.6
13		154.8
14		122.2
15		106.0
16		96.4
17		100.0
18		81.6
19		82.4
20		81.0
21		93.0
22		93.8
23		82.6

% Fever + ILI Visits		
MMWR Week	20-21	5-Year Average
40	1.6	1.9
41		2.0
42		1.9
43		2.0
44		2.0
45		2.2
46		2.2
47		2.4
48		2.3
49		2.3
50		2.8
51		3.8
52		4.2
1		3.2
2		2.7
3		2.6
4		3.0
5		3.9
6		3.8
7		3.5
8		3.2
9		3.2
10		3.3
11		3.3
12		3.0
13		2.6
14		2.1
15		1.8
16		1.6
17		1.7
18		1.4
19		1.4
20		1.4
21		1.5
22		1.5
23		1.4