



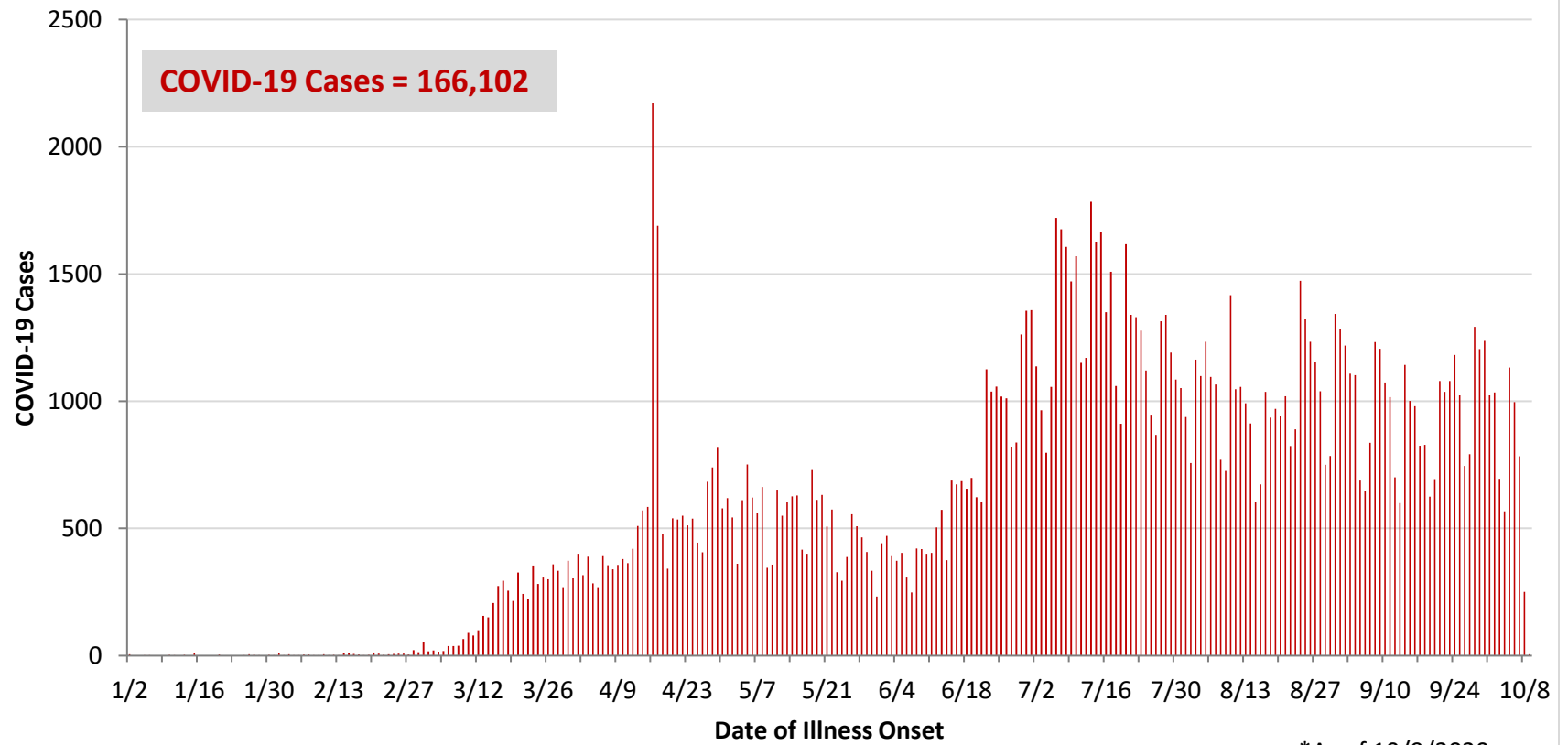
**Ohio, West Central Ohio (WCO), and Montgomery County COVID-19 Cases
As of 10/9/20**

Source: The State of Ohio COVID-19 Dashboard, Ohio Department of Health

Ohio:

Preliminary COVID-19 Cases Ohio, As of 10/9/2020		
Sex	# Cases	% Cases
Female	86,734	52%
Male	78,095	47%
Unknown	1,273	1%
Total	166,102	100%
Age Group		
Age Group	# Cases	% Cases
0-19	20,667	12%
20-29	35,721	22%
30-39	24,804	15%
40-49	22,231	13%
50-59	23,319	14%
60-69	17,653	11%
70-79	11,328	7%
80+	10,248	6%
Unknown	131	0%
Total	166,102	100%
Hospitalized		
Hospitalized	16,301	9.8%
Deaths		
Deaths	4,994	3.0%
Age Group		
Age Group	Deaths	% of Deaths
0-19	2	0%
20-29	13	0%
30-39	36	1%
40-49	83	2%
50-59	286	6%
60-69	691	14%
70-79	1,260	25%
80+	2,622	53%
Unknown	1	0%
Total	4,994	100%

**PRELIMINARY COVID-19 Cases by Date of Illness Onset
Ohio, 1/2/20 - 10/9/20***

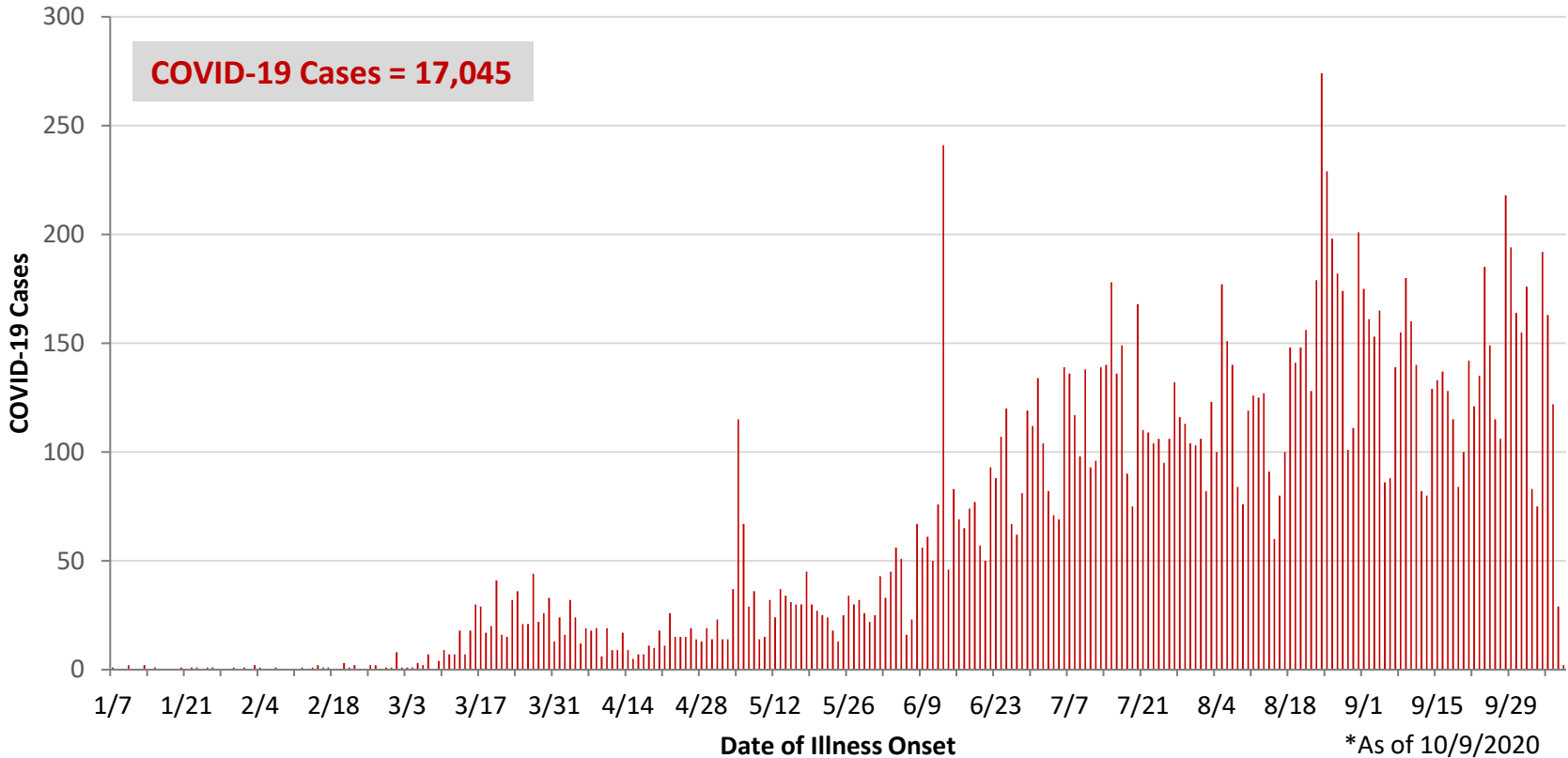


*As of 10/9/2020

WCO:

Preliminary COVID-19 Cases West Central Ohio, As of 10/9/2020		
County	# Cases	% Cases
Champaign	341	2%
Clark	2,077	12%
Darke	978	6%
Greene	1,805	11%
Miami	1,716	10%
Montgomery	8,864	52%
Preble	500	3%
Shelby	764	4%
Total	17,045	100%
Sex		
Sex	# Cases	% Cases
Female	9,401	55%
Male	7,429	44%
Unknown	215	1%
Total	17,045	100%
Age Group		
Age Group	# Cases	% Cases
0-19	2,411	14%
20-29	3,594	21%
30-39	2,275	13%
40-49	2,078	12%
50-59	2,330	14%
60-69	1,888	11%
70-79	1,325	8%
80+	1,127	7%
Total	17	0%
Hospitalized	1,712	10.0%
Deaths	406	2.4%
Age Group		
Age Group	Deaths	% of Deaths
0-19	1	0%
20-29	3	1%
30-39	4	1%
40-49	9	2%
50-59	21	5%
60-69	55	14%
70-79	94	23%
80+	219	54%
Total	406	100%

PRELIMINARY COVID-19 Cases by Date of Illness Onset
West Central Ohio, 1/7/20 - 10/9/20*



Montgomery County:

Preliminary COVID-19 Cases Montgomery County, As of 10/9/2020		
Sex	# Cases	% Cases
Female	4,960	56%
Male	3,835	43%
Unknown	69	1%
Total	8,864	100%
Age Group		
Age Group	# Cases	% Cases
0-19	1,464	17%
20-29	2,071	23%
30-39	1,160	13%
40-49	1,051	12%
50-59	1,116	13%
60-69	907	10%
70-79	619	7%
80+	475	5%
Unknown	1	0%
Total	8,864	100%
Hospitalized		
Hospitalized	1,029	11.6%
Deaths		
Deaths	183	2.1%
Age Group		
Age Group	Deaths	% of Deaths
0-19	1	1%
20-29	3	2%
30-39	3	2%
40-49	7	4%
50-59	13	7%
60-69	30	16%
70-79	45	25%
80+	81	44%
Total	183	100%

Age Group	Hospitalizations	% of Age Group Cases
0-19	35	2.4%
20-29	53	2.6%
30-39	85	7.3%
40-49	104	9.9%
50-59	176	15.8%
60-69	207	22.8%
70-79	222	35.9%
80+	147	30.9%
Total	1,029	11.6%

Source: Ohio Disease Reporting System, ODH

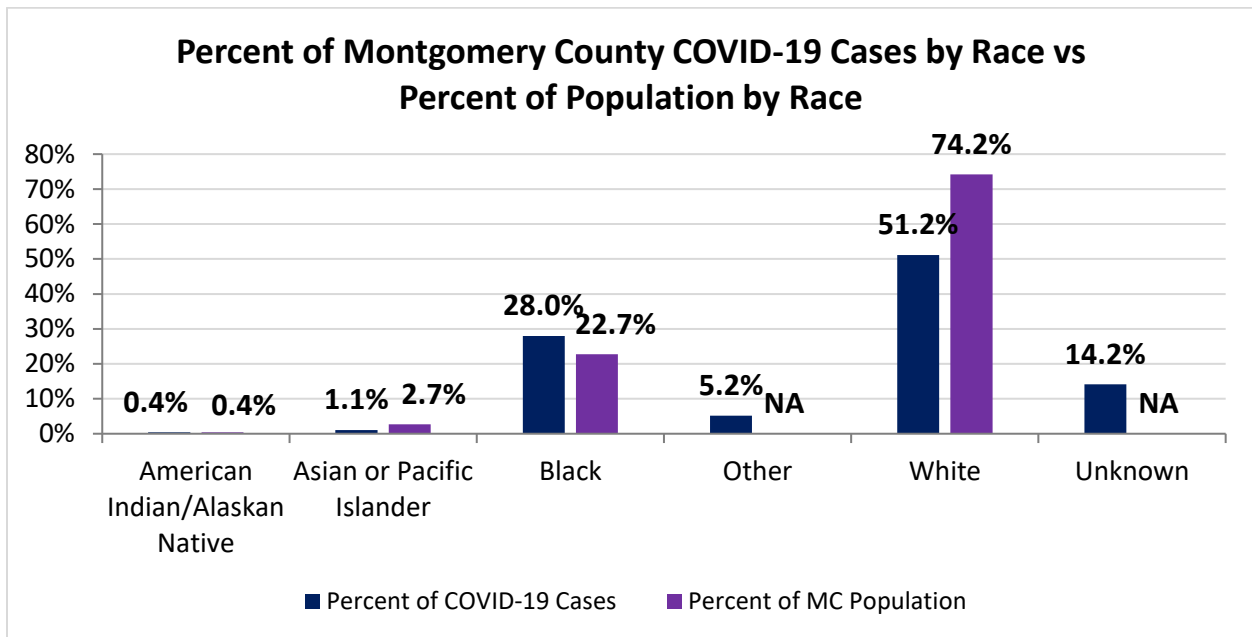
Note. All rates are per 100,000 population.

Montgomery County COVID-19 Cases by Race As of 10/8/20				
Race	Count	Percent	Case Rate	Rate Interpretation**
American Indian/Alaskan Native (AI/AN)*	34	0.4%	1,589.5	1 in 63
Asian	93	1.1%	659.7	1 in 152
Black	2,406	28.0%	1,989.9	1 in 50
Other	448	5.2%	NA	NA
White	4,400	51.2%	1,115.2	1 in 90
Unknown	1,217	14.2%	NA	NA
Total	8,598	100%	1,617.1	1 in 62

*Note. AI/ANs account for 0.4% of Montgomery County's population, and therefore, rates for this population will be large and may be misleading.

**Rate interpretation represents the number of cases for the given population.

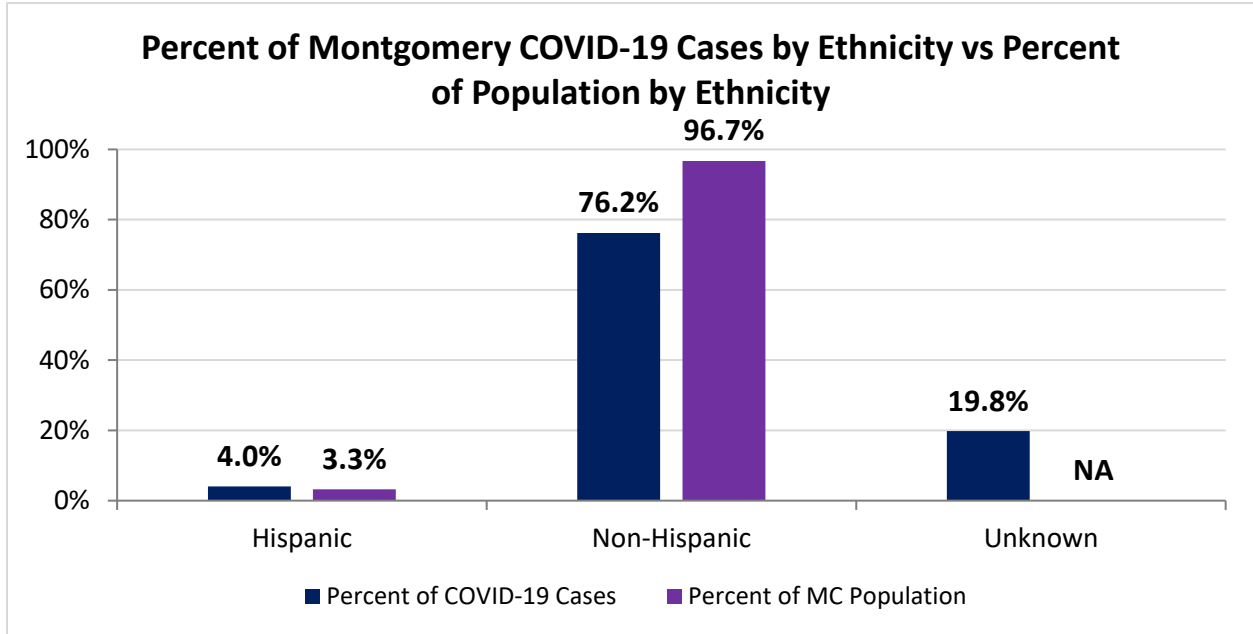
Example - there is a total of 1 case for every 62 Montgomery County residents.



Montgomery County COVID-19 Deaths by Race as of 10/8/2020		
Race	Count	Death Rate
American Indian/Alaskan Native	3	140.3
Asian or Pacific Islander	4	28.4
Black	65	53.8
Other	1	NA
White	111	28.1
Unknown	0	NA
Total	184	34.6

Montgomery County COVID-19 Cases by Ethnicity As of 10/8/20				
Ethnicity	Count	Percent	Case Rate	Rate Interpretation**
Hispanic	345	4.0%	1,991.0	1 in 50
Non-Hispanic	6,553	76.2%	1,274.0	1 in 78
Unknown	1,700	19.8%	NA	NA
Total	8,598	100%	1,617.1	1 in 62

**Rate interpretation represents the number of cases for the given population.
 Example - there is a total of 1 case for every 62 Montgomery County residents.



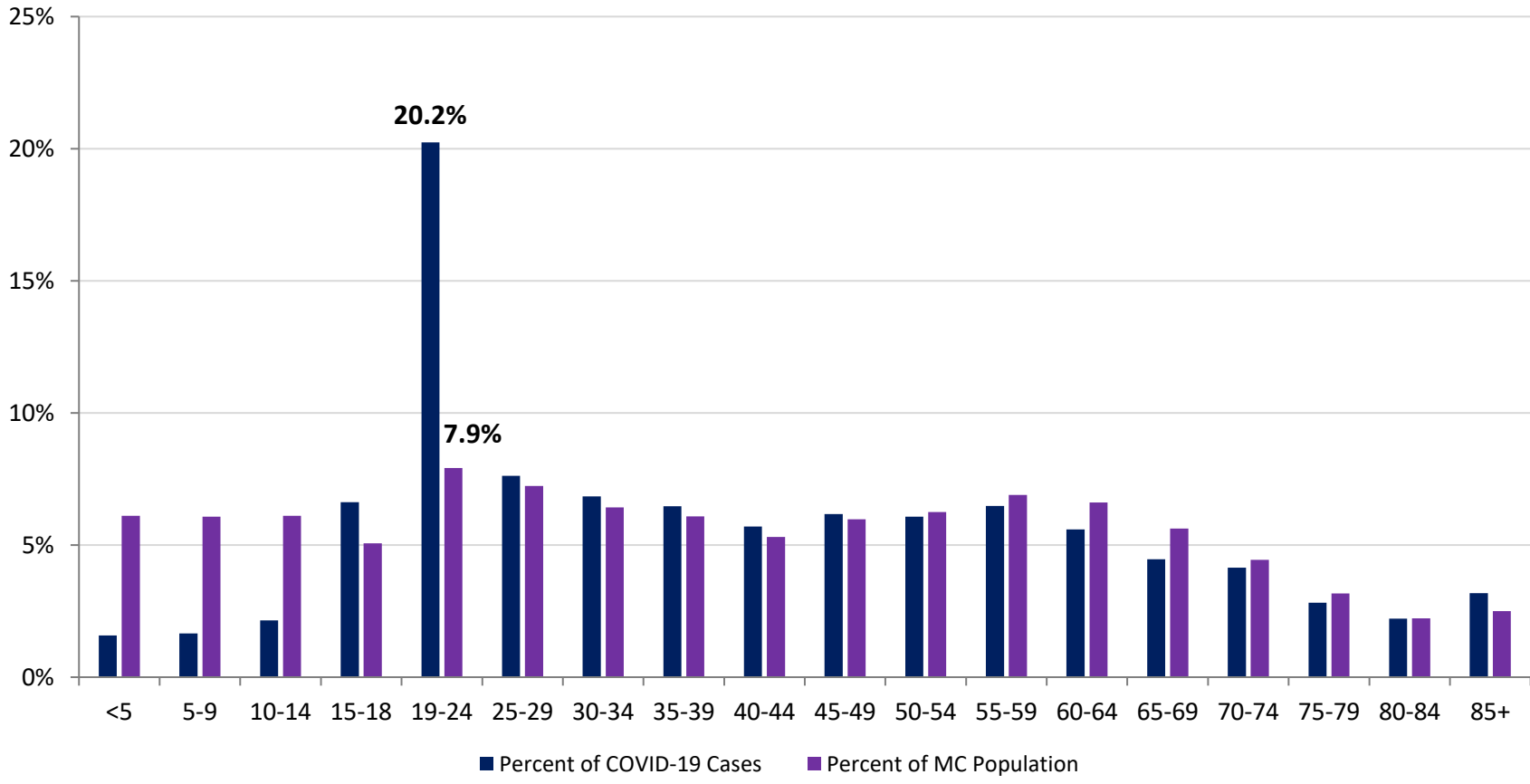
Montgomery County COVID-19 Cases by Health Care Worker Status As of 10/8/20		
Status	#	%
Health Care Worker	835	9.7%
Non-Health Care Worker	5,135	59.7%
Unknown	2,628	30.6%
Total	8,598	100%

Montgomery County COVID-19 Cases Age Range As of 10/8/20	
Stat	Age in Years
Age Range	<1 - 104
Average Age	40.8
Median Age	37.0

Montgomery County COVID-19 Cases by Age Group As of 10/8/20						
Age Group	Total Cases	Total Case Rate	Percent of COVID-19 Cases	Percent of MC Population	Current Cases*	Current Case Rate*
<5	136	416.9	1.6%	6.1%	12	36.8
5-9	142	441.1	1.7%	6.1%	15	46.6
10-14	185	576.4	2.2%	6.1%	23	71.7
15-18	569	2,154.2	6.6%	5.1%	78	295.3
19-24	1740	4,134.0	20.2%	7.9%	128	304.1
25-29	655	1,707.7	7.6%	7.2%	69	179.9
30-34	588	1,681.9	6.8%	6.4%	66	188.8
35-39	556	1,722.4	6.5%	6.1%	73	226.1
40-44	490	1,705.1	5.7%	5.3%	58	201.8
45-49	531	1,733.1	6.2%	6.0%	69	225.2
50-54	522	1,616.8	6.1%	6.2%	84	260.2
55-59	557	1,537.2	6.5%	6.9%	67	184.9
60-64	481	1,360.6	5.6%	6.6%	73	206.5
65-69	384	1,270.6	4.5%	5.6%	74	244.9
70-74	356	1,443.3	4.1%	4.4%	54	218.9
75-79	242	1,407.8	2.8%	3.2%	49	285.0
80-84	190	1,586.1	2.2%	2.2%	33	275.5
85+	273	2,040.8	3.2%	2.5%	51	381.3
Total	8,597	1,616.9	100%	100%	1,076	202.4

*Current Cases – cases with symptom onset in the past 21 days. Current Case Rate – current cases per 100,000.

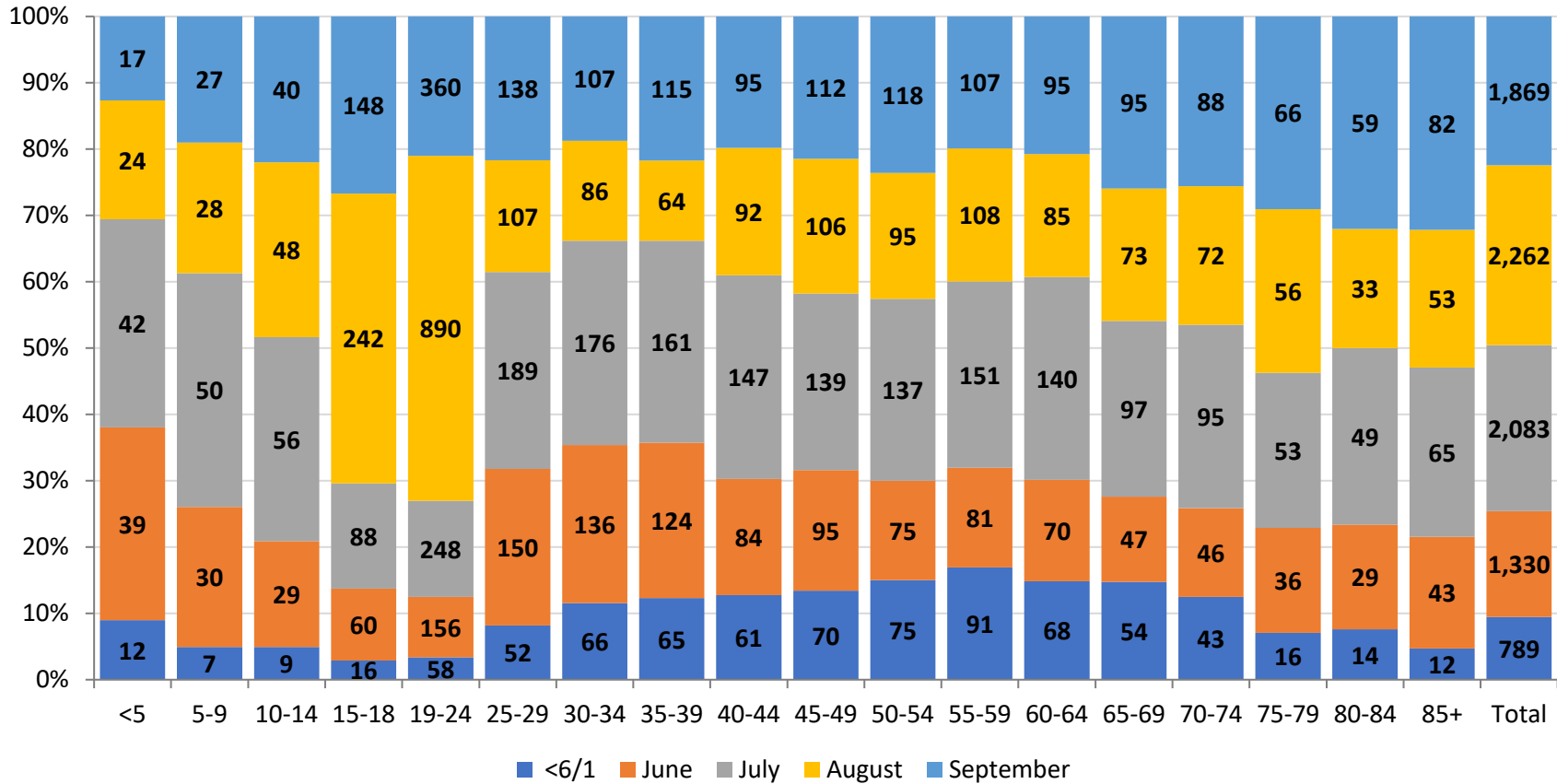
Percent of Montgomery County COVID-19 Cases by Age Group vs Percent of Population by Age Group



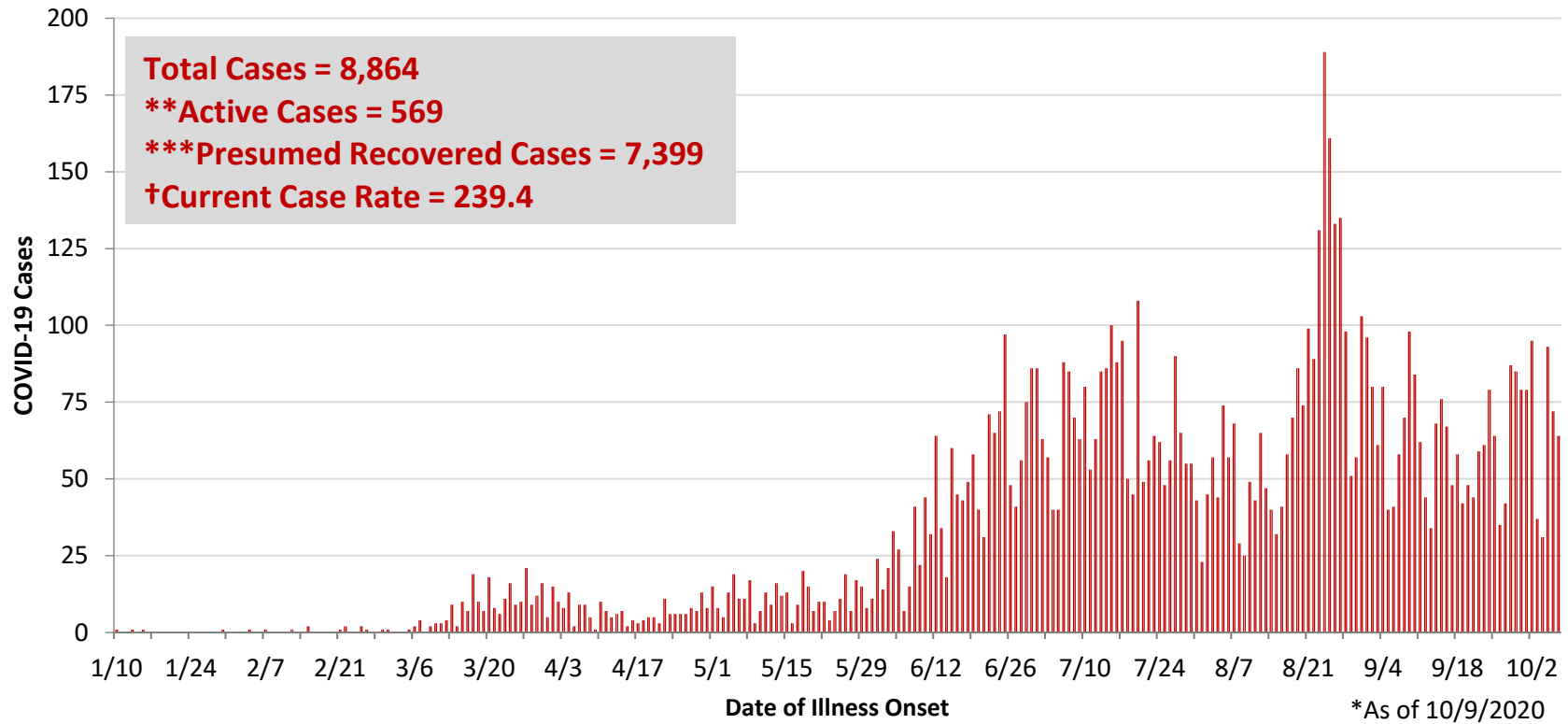
PRELIMINARY Montgomery County COVID-19 Cases by Age Group and by Month As of 10/8/20							
Age Group	Cases <6/1	Cases June	Cases July	Cases August	Cases September	Total Cases	% Change Aug to Sep
<5	12	39	42	24	17	134	-29%
5-9	7	30	50	28	27	142	-4%
10-14	9	29	56	48	40	182	-17%
15-18	16	60	88	242	148	554	-39%
19-24	58	156	248	890	360	1,712	-60%
25-29	52	150	189	107	138	636	29%
30-34	66	136	176	86	107	571	24%
35-39	65	124	161	64	115	529	80%
40-44	61	84	147	92	95	479	3%
45-49	70	95	139	106	112	522	6%
50-54	75	75	137	95	118	500	24%
55-59	91	81	151	108	107	538	-1%
60-64	68	70	140	85	95	458	12%
65-69	54	47	97	73	95	366	30%
70-74	43	46	95	72	88	344	22%
75-79	16	36	53	56	66	227	18%
80-84	14	29	49	33	59	184	79%
85+	12	43	65	53	82	255	55%
Total	789	1,330	2,083	2,262	1,869	8,333	-17%

PRELIMINARY Montgomery County COVID-19 Case Rate by Age Group and by Month As of 10/8/20							
Age Group	Case Rate <6/1	Case Rate June	Case Rate July	Case Rate August	Case Rate September	Overall Case Rate	% Change Aug to Sep
<5	36.8	119.6	128.7	73.6	52.1	410.8	-29%
5-9	21.7	93.2	155.3	87.0	83.9	441.1	-4%
10-14	28.0	90.4	174.5	149.6	124.6	567.1	-17%
15-18	60.6	227.2	333.2	916.2	560.3	2097.5	-39%
19-24	137.8	370.6	589.2	2114.5	855.3	4067.5	-60%
25-29	135.6	391.1	492.8	279.0	359.8	1658.2	29%
30-34	188.8	389.0	503.4	246.0	306.1	1633.2	24%
35-39	201.4	384.1	498.7	198.3	356.2	1638.7	80%
40-44	212.3	292.3	511.5	320.1	330.6	1666.8	3%
45-49	228.5	310.1	453.7	346.0	365.5	1703.7	6%
50-54	232.3	232.3	424.3	294.3	365.5	1548.7	24%
55-59	251.1	223.5	416.7	298.1	295.3	1484.8	-1%
60-64	192.3	198.0	396.0	240.4	268.7	1295.5	12%
65-69	178.7	155.5	321.0	241.6	314.4	1211.1	30%
70-74	174.3	186.5	385.1	291.9	356.8	1394.6	22%
75-79	93.1	209.4	308.3	325.8	383.9	1320.5	18%
80-84	116.9	242.1	409.0	275.5	492.5	1536.0	79%
85+	89.7	321.4	485.9	396.2	613.0	1906.3	55%
Total	148.4	250.1	391.8	425.4	351.5	1,567.3	-17%

COVID-19 Cases by Age Group and Month as of 10/8/2020



**PRELIMINARY COVID-19 Cases by Date of Illness Onset
Montgomery County, 1/10/20 - 10/9/20***

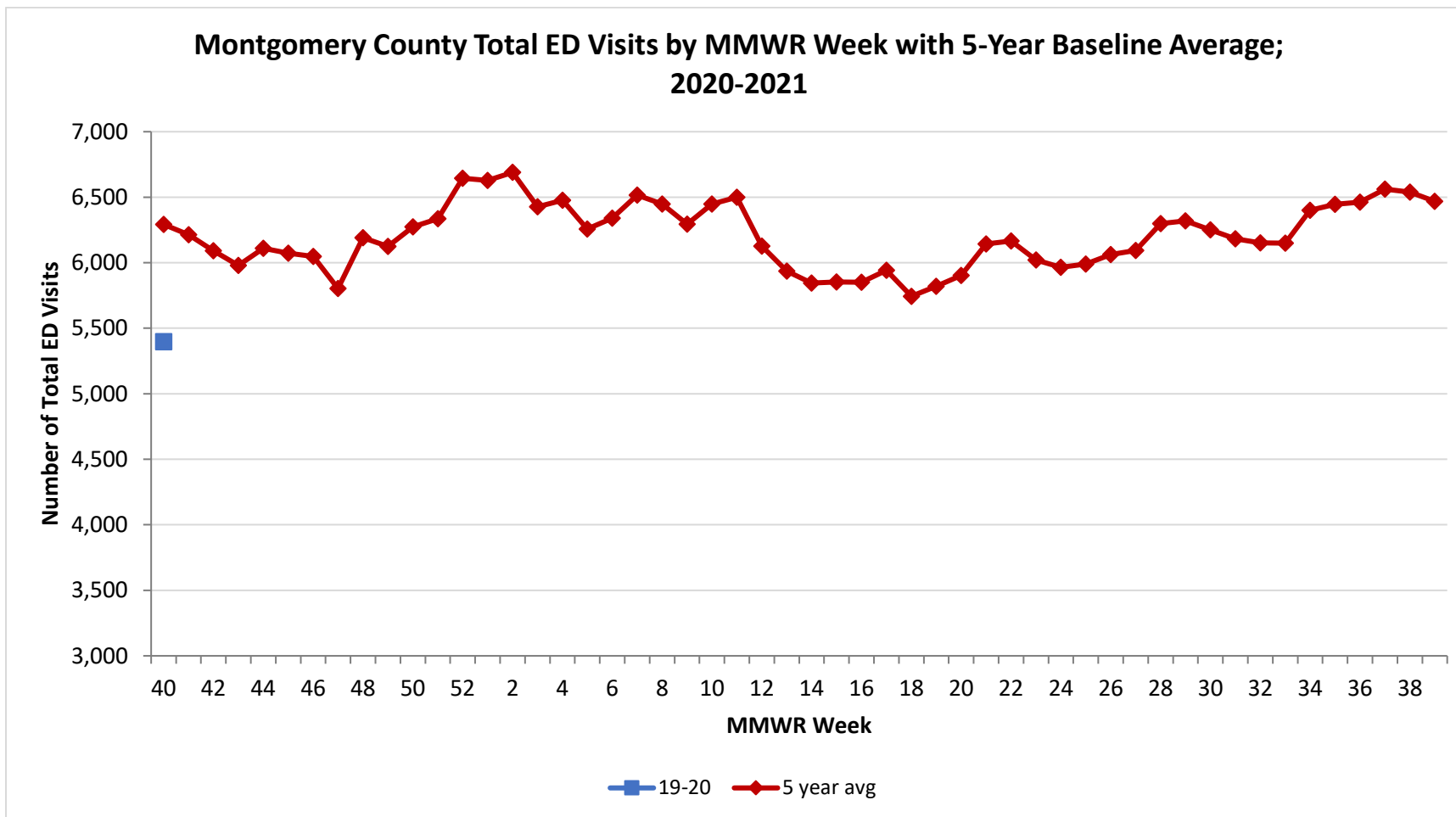


**Active cases are based on the reported illness onset date (using a 10-day window) of reported cases.

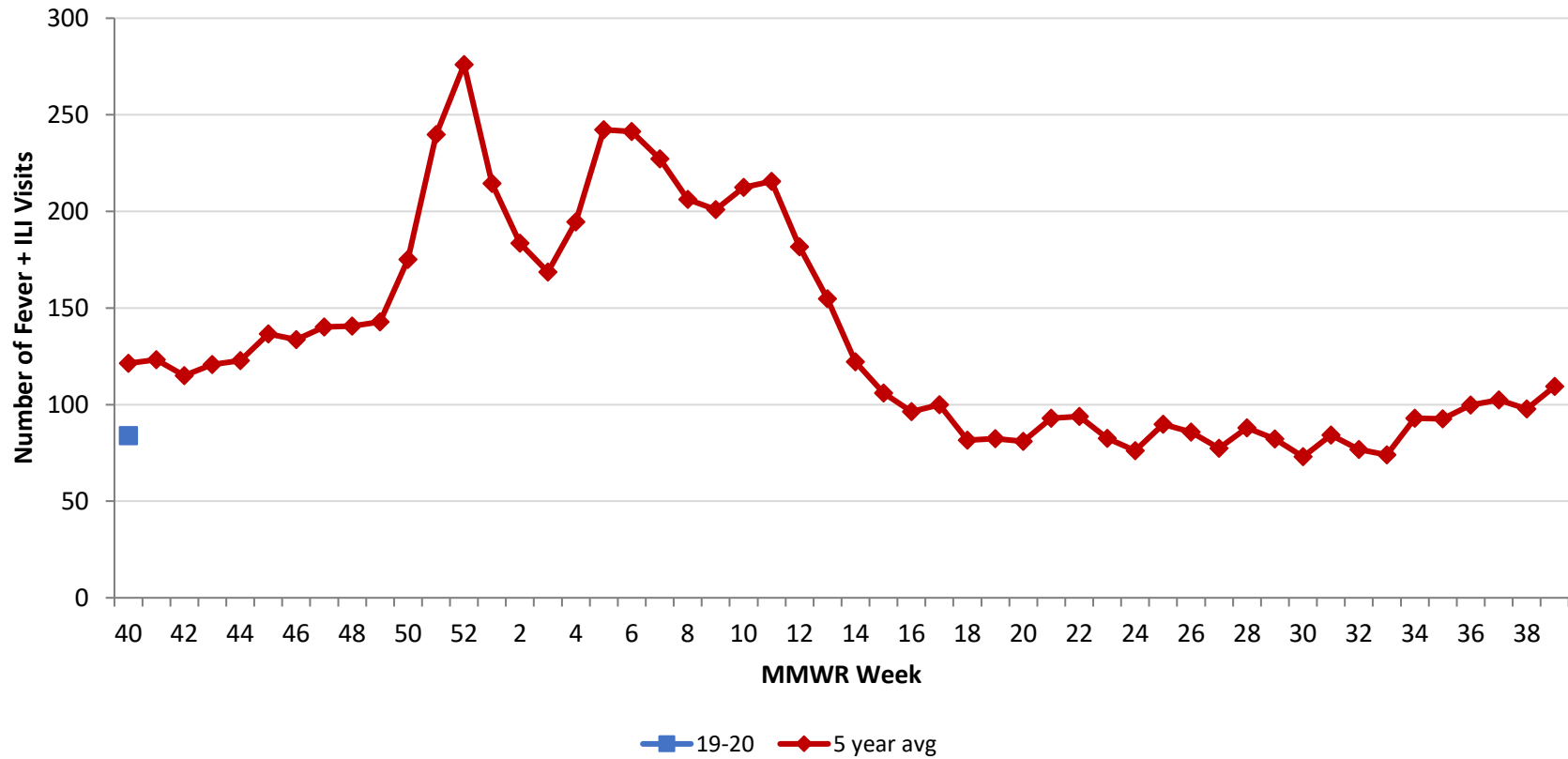
***Presumed recovered is defined as cases with a symptom onset date >21 days prior who are not deceased.

†Current Case Rate – current cases (symptom onset past 21 days) per 100,000.

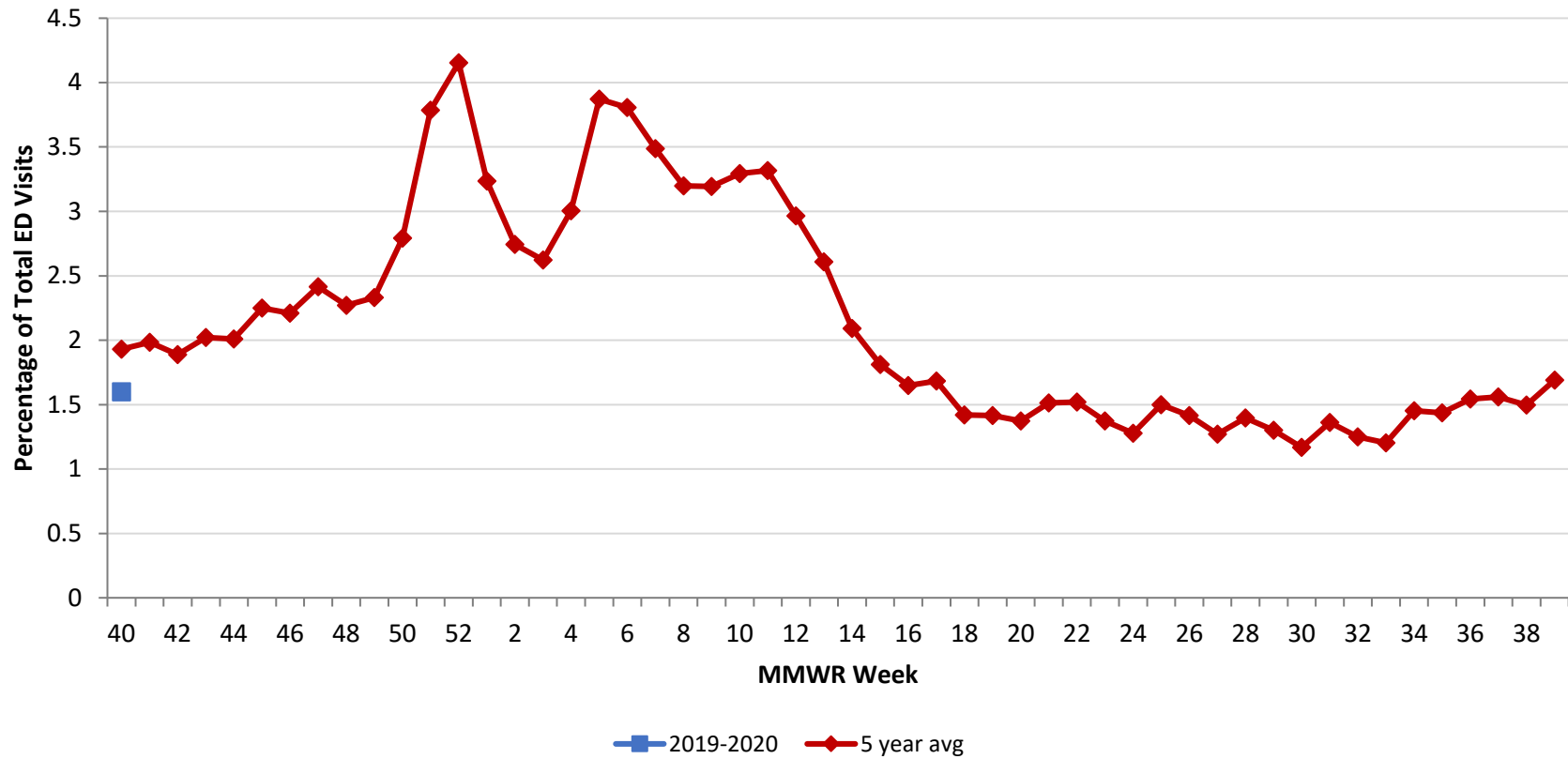
Source: EpiCenter Syndromic Surveillance, Health Monitoring Systems



Montgomery County Fever + ILI Specified ED Visits by MMWR Week with 5-Year Baseline Average; 2020-2021



Montgomery County Fever + ILI Specified ED Visits (% of Total Visits) by MMWR Week with 5-Year Baseline Average; 2020-2021



# Total Visits		
MMWR Week	20-21	5-Year Average
40	5,397	6,293.0
41		6,213.8
42		6,091.6
43		5,980.2
44		6,109.2
45		6,072.2
46		6,047.6
47		5,804.2
48		6,191.8
49		6,125.0
50		6,274.6
51		6,335.0
52		6,644.2
1		6,628.0
2		6,689.2
3		6,427.5
4		6,476.0
5		6,257.4
6		6,340.2
7		6,516.2
8		6,447.2
9		6,294.6
10		6,448.6
11		6,500.6
12		6,126.4
13		5,935.4
14		5,844.6
15		5,853.0
16		5,850.4
17		5,942.4
18		5,744.0
19		5,820.6
20		5,902.8
21		6,142.4
22		6,166.6
23		6,020.4

# Fever + ILI Visits		
MMWR Week	20-21	5-Year Average
40	84	121.4
41		123.2
42		115.0
43		120.8
44		122.8
45		136.6
46		133.6
47		140.2
48		140.6
49		142.8
50		175.2
51		239.8
52		276.0
1		214.4
2		183.6
3		168.6
4		194.6
5		242.2
6		241.4
7		227.2
8		206.2
9		201.0
10		212.4
11		215.6
12		181.6
13		154.8
14		122.2
15		106.0
16		96.4
17		100.0
18		81.6
19		82.4
20		81.0
21		93.0
22		93.8
23		82.6

% Fever + ILI Visits		
MMWR Week	20-21	5-Year Average
40	1.6	1.9
41		2.0
42		1.9
43		2.0
44		2.0
45		2.2
46		2.2
47		2.4
48		2.3
49		2.3
50		2.8
51		3.8
52		4.2
1		3.2
2		2.7
3		2.6
4		3.0
5		3.9
6		3.8
7		3.5
8		3.2
9		3.2
10		3.3
11		3.3
12		3.0
13		2.6
14		2.1
15		1.8
16		1.6
17		1.7
18		1.4
19		1.4
20		1.4
21		1.5
22		1.5
23		1.4