



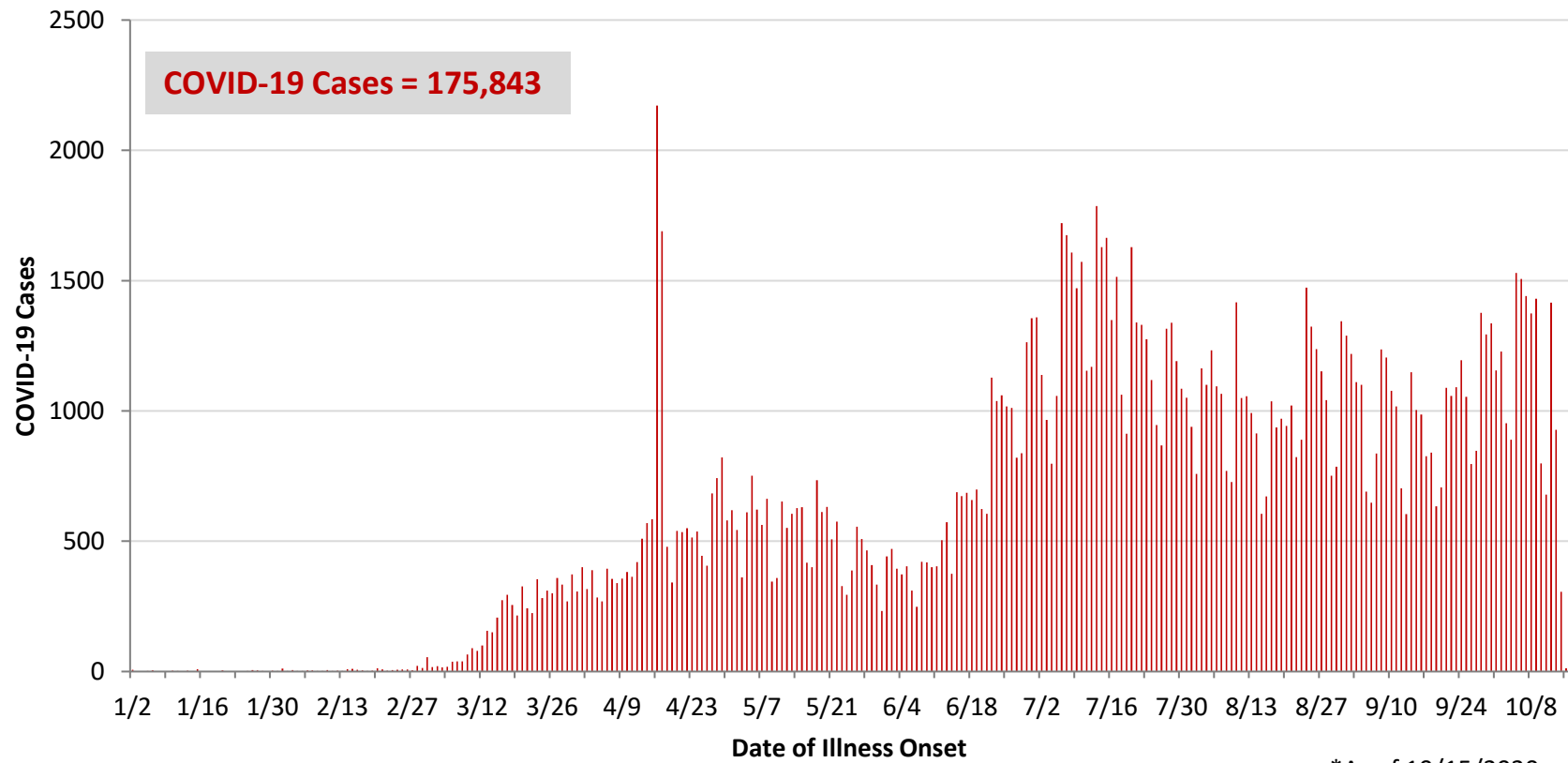
**Ohio, West Central Ohio (WCO), and Montgomery County COVID-19 Cases  
As of 10/15/20**

**Source:** The State of Ohio COVID-19 Dashboard, Ohio Department of Health

**Ohio:**

<b>Preliminary COVID-19 Cases Ohio, As of 10/15/2020</b>		
<b>Sex</b>	<b># Cases</b>	<b>% Cases</b>
Female	91,860	52%
Male	82,618	47%
Unknown	1,365	1%
<b>Total</b>	<b>175,843</b>	<b>100%</b>
<b>Age Group</b>		
<b>Age Group</b>	<b># Cases</b>	<b>% Cases</b>
0-19	22,041	13%
20-29	37,435	21%
30-39	26,123	15%
40-49	23,585	13%
50-59	24,775	14%
60-69	18,824	11%
70-79	12,143	7%
80+	10,779	6%
Unknown	138	0%
<b>Total</b>	<b>175,843</b>	<b>100%</b>
<b>Hospitalized</b>		
Hospitalized	16,824	9.6%
<b>Deaths</b>		
Deaths	5,038	2.9%
<b>Age Group</b>		
<b>Age Group</b>	<b>Deaths</b>	<b>% of Deaths</b>
0-19	2	0%
20-29	13	0%
30-39	36	1%
40-49	83	2%
50-59	287	6%
60-69	697	14%
70-79	1,272	25%
80+	2,647	53%
Unknown	1	0%
<b>Total</b>	<b>5,038</b>	<b>100%</b>

**PRELIMINARY COVID-19 Cases by Date of Illness Onset  
Ohio, 1/2/20 - 10/15/20\***

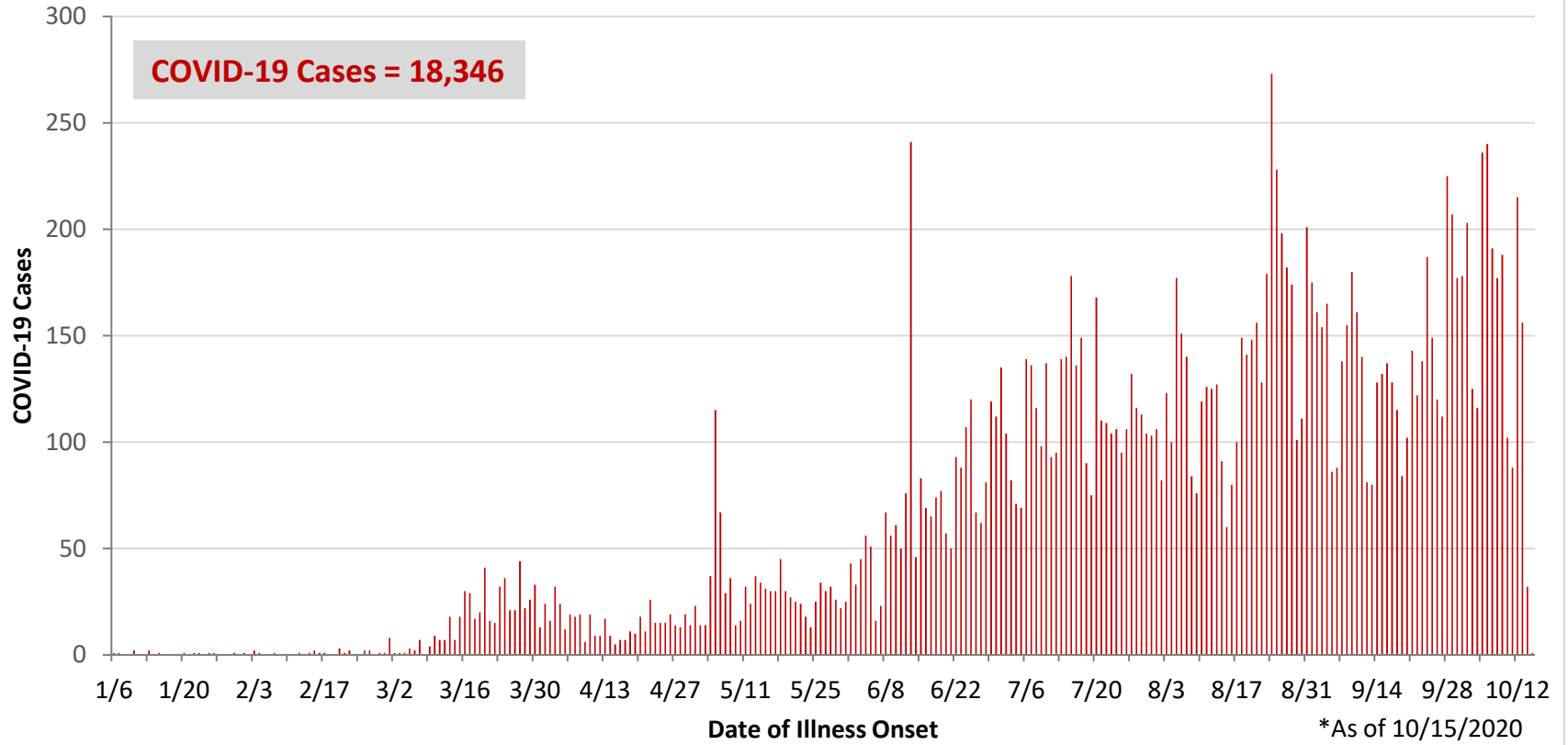


\*As of 10/15/2020

WCO:

Preliminary COVID-19 Cases West Central Ohio, As of 10/15/2020		
County	# Cases	% Cases
Champaign	366	2%
Clark	2,246	12%
Darke	1,048	6%
Greene	1,976	11%
Miami	1,852	10%
Montgomery	9,487	52%
Preble	547	3%
Shelby	824	4%
<b>Total</b>	<b>18,346</b>	<b>100%</b>
Sex		
Sex	# Cases	% Cases
Female	10,106	55%
Male	8,000	44%
Unknown	240	1%
<b>Total</b>	<b>18,346</b>	<b>100%</b>
Age Group		
Age Group	# Cases	% Cases
0-19	2,586	14%
20-29	3,779	21%
30-39	2,460	13%
40-49	2,249	12%
50-59	2,527	14%
60-69	2,057	11%
70-79	1,450	8%
80+	1,220	7%
Unknown	18	0%
<b>Total</b>	<b>18,346</b>	<b>100%</b>
Hospitalized	1,810	9.9%
Deaths	414	2.3%
Age Group		
Age Group	Deaths	% of Deaths
0-19	1	0%
20-29	3	1%
30-39	4	1%
40-49	9	2%
50-59	21	5%
60-69	56	14%
70-79	95	23%
80+	225	54%
<b>Total</b>	<b>414</b>	<b>100%</b>

**PRELIMINARY COVID-19 Cases by Date of Illness Onset  
West Central Ohio, 1/7/20 - 10/15/20\***



**Montgomery County:**

<b>Preliminary COVID-19 Cases Montgomery County, As of 10/15/2020</b>		
<b>Sex</b>	<b># Cases</b>	<b>% Cases</b>
Female	5,300	56%
Male	4,116	43%
Unknown	71	1%
<b>Total</b>	<b>9,487</b>	<b>100%</b>
<b>Age Group</b>		
<b>Age Group</b>	<b># Cases</b>	<b>% Cases</b>
0-19	1,531	16%
20-29	2,159	23%
30-39	1,255	13%
40-49	1,137	12%
50-59	1,220	13%
60-69	981	10%
70-79	680	7%
80+	522	6%
Unknown	2	0%
<b>Total</b>	<b>9,487</b>	<b>100%</b>
<b>Hospitalized</b>		
Hospitalized	1,076	11.3%
<b>Deaths</b>		
Deaths	183	1.9%
<b>Age Group</b>		
<b>Age Group</b>	<b>Deaths</b>	<b>% of Deaths</b>
0-19	1	1%
20-29	3	2%
30-39	3	2%
40-49	7	4%
50-59	13	7%
60-69	30	16%
70-79	45	25%
80+	81	44%
<b>Total</b>	<b>183</b>	<b>100%</b>

<b>Age Group</b>	<b>Hospitalizations</b>	<b>% of Age Group Cases</b>
0-19	37	2.4%
20-29	55	2.5%
30-39	87	6.9%
40-49	108	9.5%
50-59	183	15.0%
60-69	212	21.6%
70-79	236	34.7%
80+	158	30.3%
<b>Total</b>	<b>1,076</b>	<b>11.3%</b>

Source: Ohio Disease Reporting System, ODH

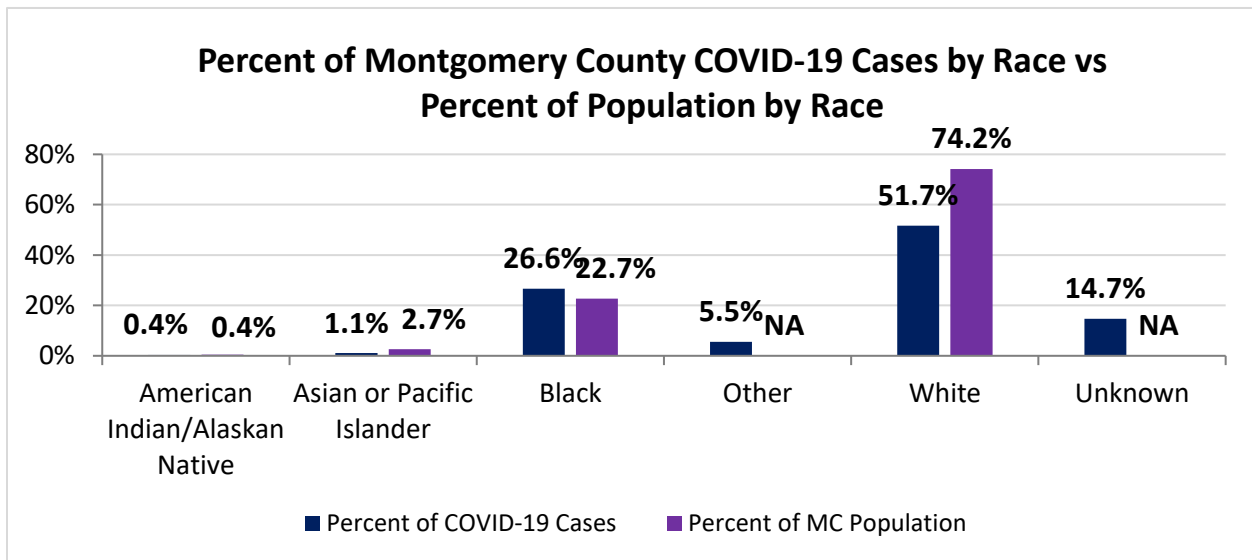
Note. All rates are per 100,000 population.

Montgomery County COVID-19 Cases by Race As of 10/15/20				
Race	Count	Percent	Case Rate	Rate Interpretation**
American Indian/Alaskan Native (AI/AN)*	35	0.4%	1,636.3	1 in 61
Asian	100	1.1%	709.3	1 in 141
Black	2,501	26.6%	2,068.5	1 in 48
Other	520	5.5%	NA	NA
White	4,864	51.7%	1,232.8	1 in 81
Unknown	1,383	14.7%	NA	NA
<b>Total</b>	<b>9,403</b>	<b>100%</b>	<b>1,768.5</b>	<b>1 in 56</b>

\*Note. AI/ANs account for 0.4% of Montgomery County's population, and therefore, rates for this population will be large and may be misleading.

\*\*Rate interpretation represents the number of cases for the given population.

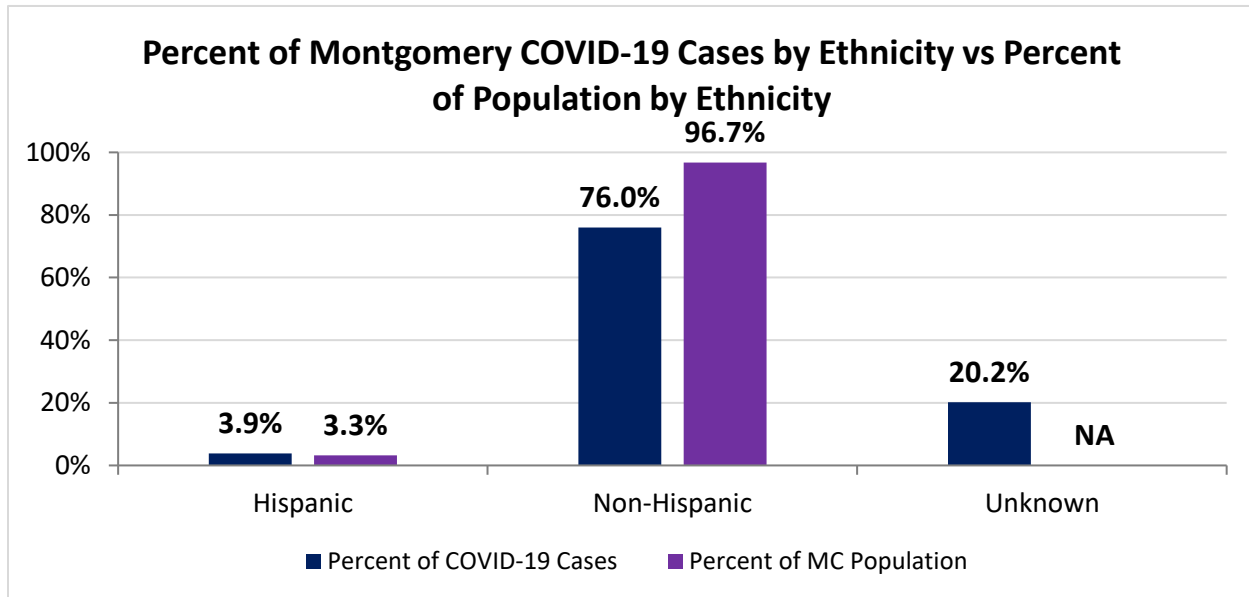
Example - there is a total of 1 case for every 62 Montgomery County residents.



Montgomery County COVID-19 Deaths by Race as of 10/11/2020		
Race	Count	Death Rate
American Indian/Alaskan Native	3	140.3
Asian or Pacific Islander	4	28.4
Black	66	54.6
Other	2	NA
White	112	28.4
Unknown	0	NA
<b>Total</b>	<b>187</b>	<b>35.2</b>

<b>Montgomery County COVID-19 Cases by Ethnicity As of 10/11/20</b>				
<b>Ethnicity</b>	<b>Count</b>	<b>Percent</b>	<b>Case Rate</b>	<b>Rate Interpretation**</b>
Hispanic	364	3.9%	2,100.6	1 in 48
Non-Hispanic	7,143	76.0%	1,388.7	1 in 72
Unknown	1,896	20.2%	NA	NA
<b>Total</b>	<b>9,403</b>	<b>100%</b>	<b>1,768.5</b>	<b>1 in 57</b>

\*\*Rate interpretation represents the number of cases for the given population.  
 Example - there is a total of 1 case for every 62 Montgomery County residents.



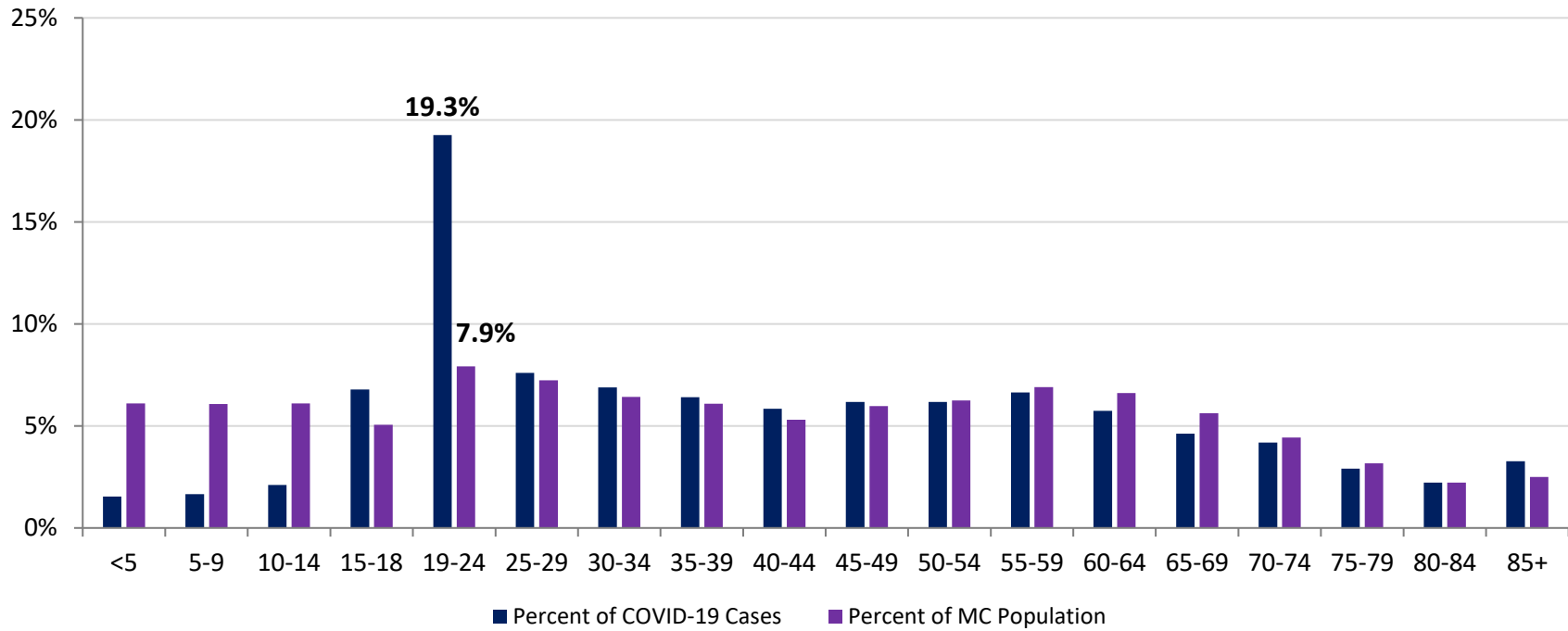
<b>Montgomery County COVID-19 Cases by Health Care Worker Status As of 10/11/20</b>		
<b>Status</b>	<b>#</b>	<b>%</b>
Health Care Worker	891	9.5%
Non-Health Care Worker	5,569	59.2%
Unknown	2,943	31.3%
<b>Total</b>	<b>9,403</b>	<b>100%</b>

<b>Montgomery County COVID-19 Cases Age Range As of 10/11/20</b>	
<b>Stat</b>	<b>Age in Years</b>
Age Range	<1 - 104
Average Age	41.2
Median Age	38

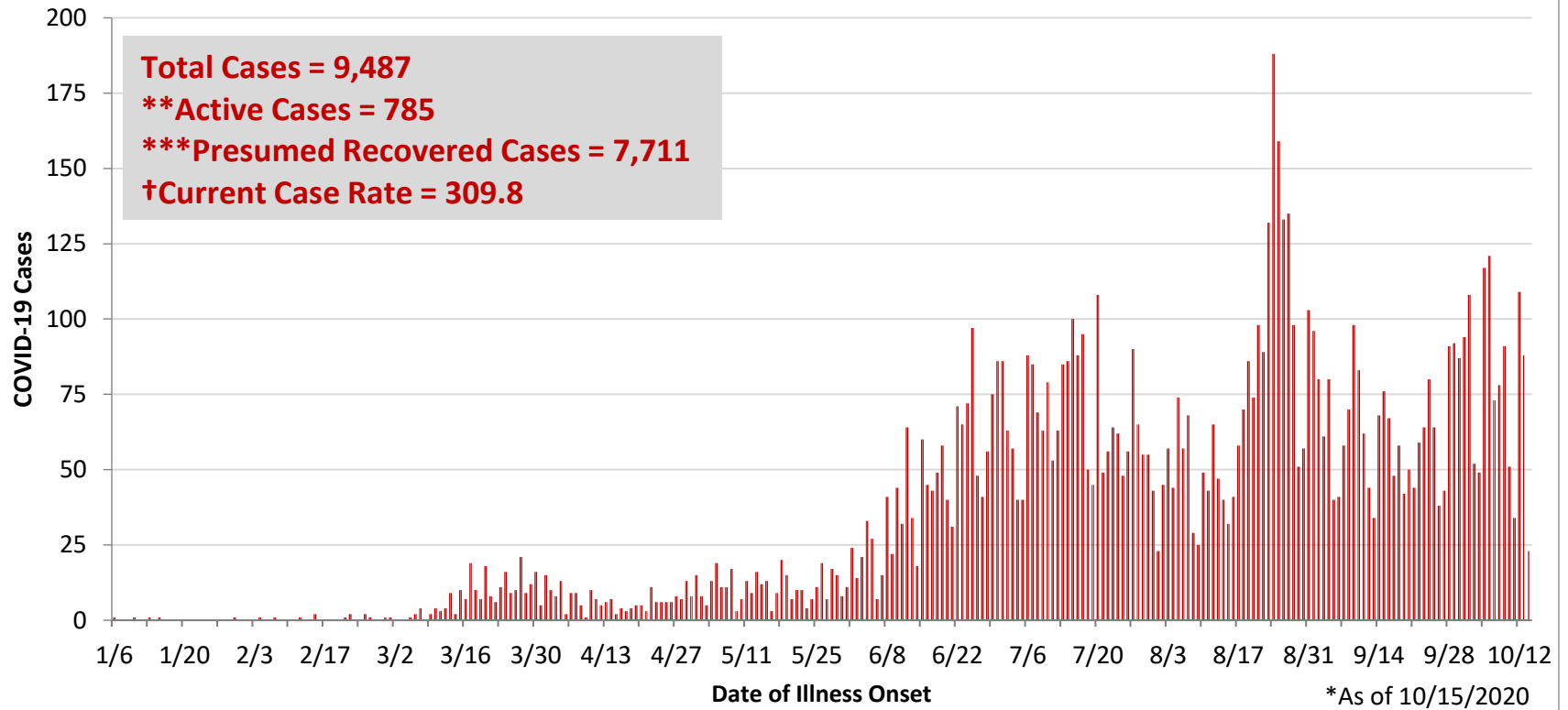
<b>Age Group</b>	<b>Total Cases</b>	<b>Total Case Rate</b>	<b>Percent of COVID-19 Cases</b>	<b>Percent of MC Population</b>
<5	145	444.5	1.5%	6.1%
5-9	156	484.6	1.7%	6.1%
10-14	198	616.9	2.1%	6.1%
15-18	638	2,415.5	6.8%	5.1%
19-24	1810	4,300.3	19.3%	7.9%
25-29	714	1,861.6	7.6%	7.2%
30-34	647	1,850.6	6.9%	6.4%
35-39	603	1,868.0	6.4%	6.1%
40-44	549	1,910.4	5.8%	5.3%
45-49	580	1,893.0	6.2%	6.0%
50-54	580	1,796.5	6.2%	6.2%
55-59	624	1,722.1	6.6%	6.9%
60-64	539	1,524.6	5.7%	6.6%
65-69	435	1,439.4	4.6%	5.6%
70-74	394	1,597.3	4.2%	4.4%
75-79	273	1,588.1	2.9%	3.2%
80-84	209	1,744.7	2.2%	2.2%
85+	307	2,295.0	3.3%	2.5%
<b>Total</b>	<b>9,401</b>	<b>1,768.1</b>	<b>100%</b>	<b>100%</b>



Percent of Montgomery County COVID-19 Cases by Age Group vs Percent of Population by Age Group



**PRELIMINARY COVID-19 Cases by Date of Illness Onset  
Montgomery County, 1/10/20 - 10/15/20\***

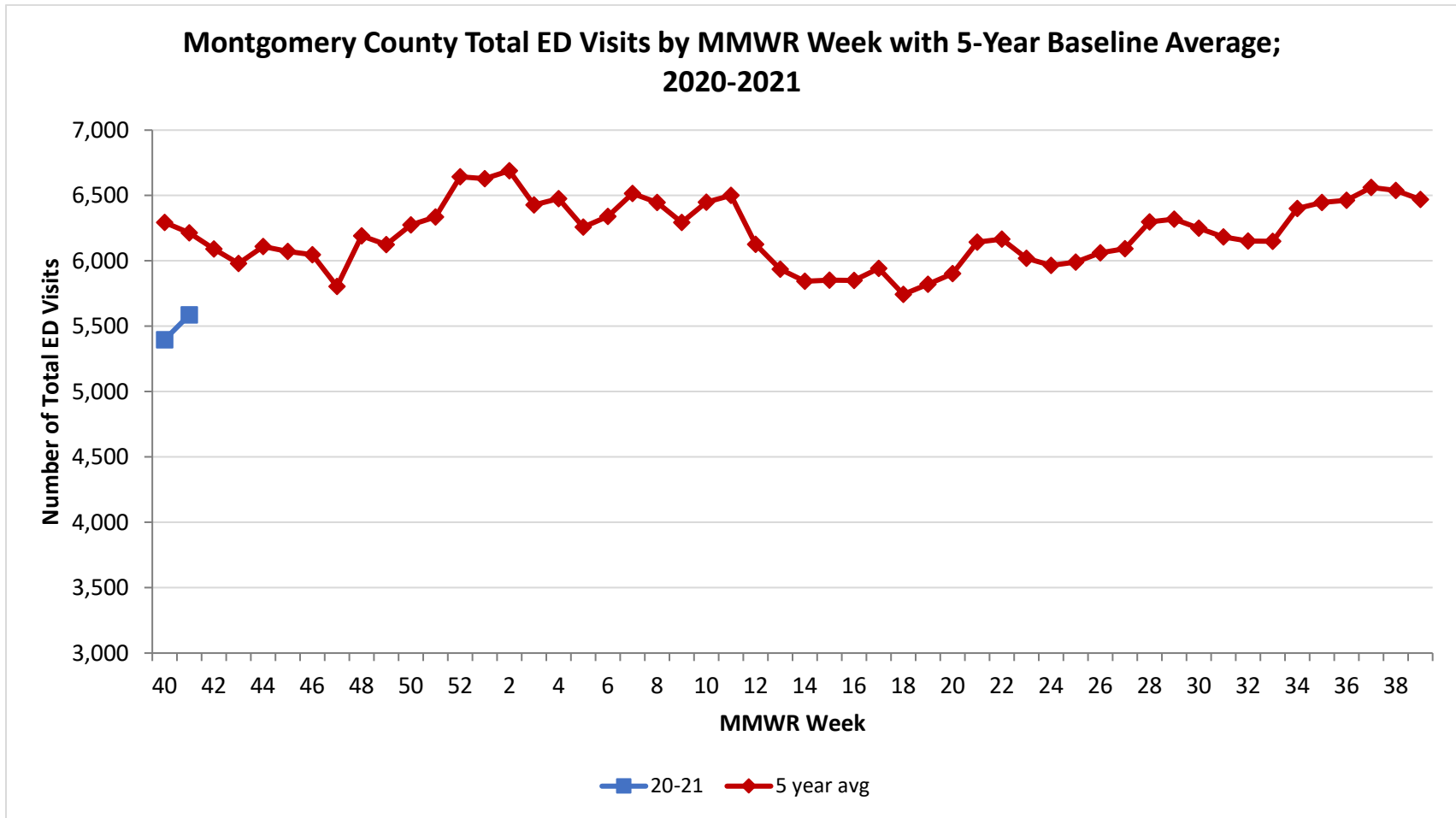


\*\*Active cases are based on the reported illness onset date (using a 10-day window) of reported cases.

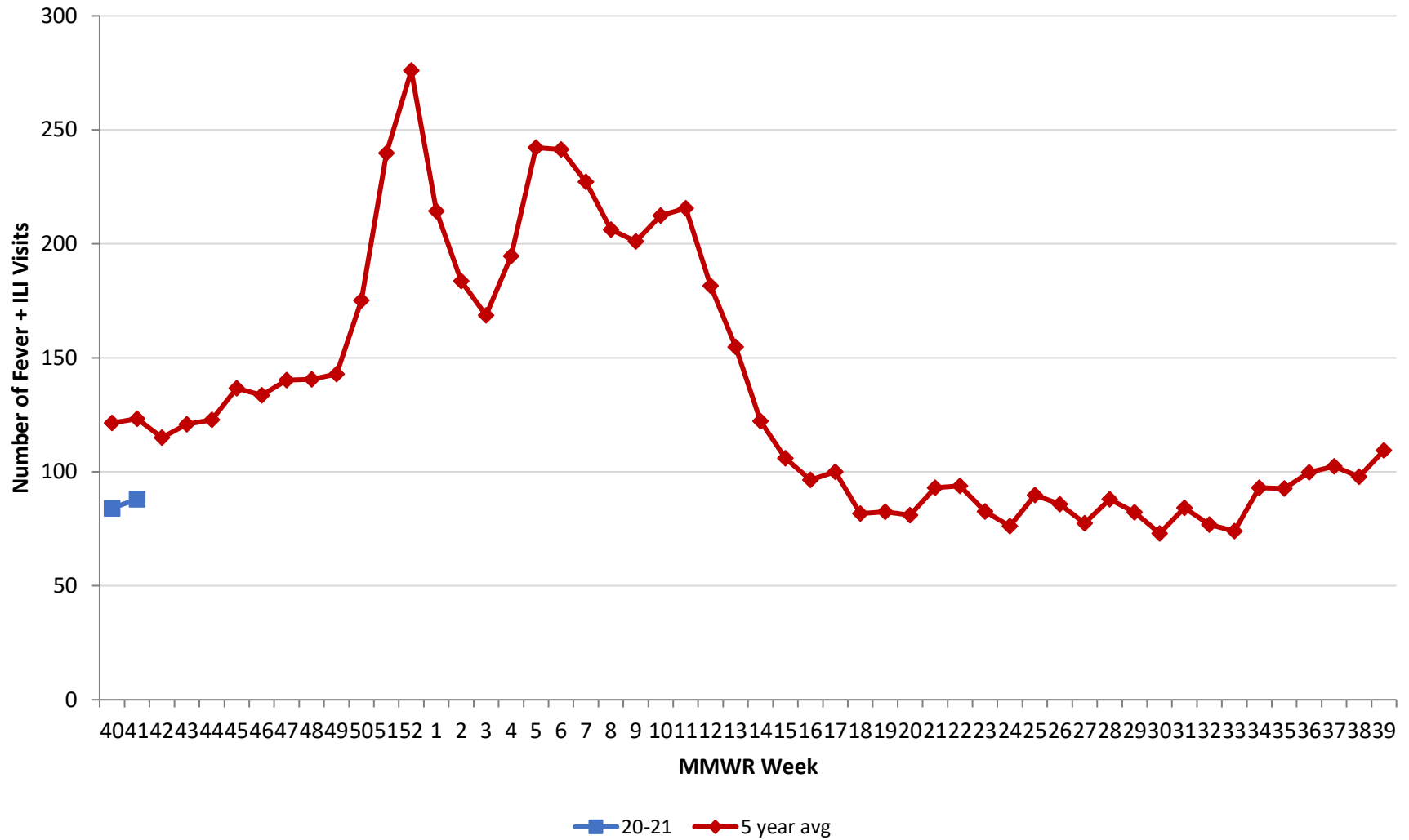
\*\*\*Presumed recovered is defined as cases with a symptom onset date >21 days prior who are not deceased.

†Current Case Rate – current cases (symptom onset past 21 days) per 100,000.

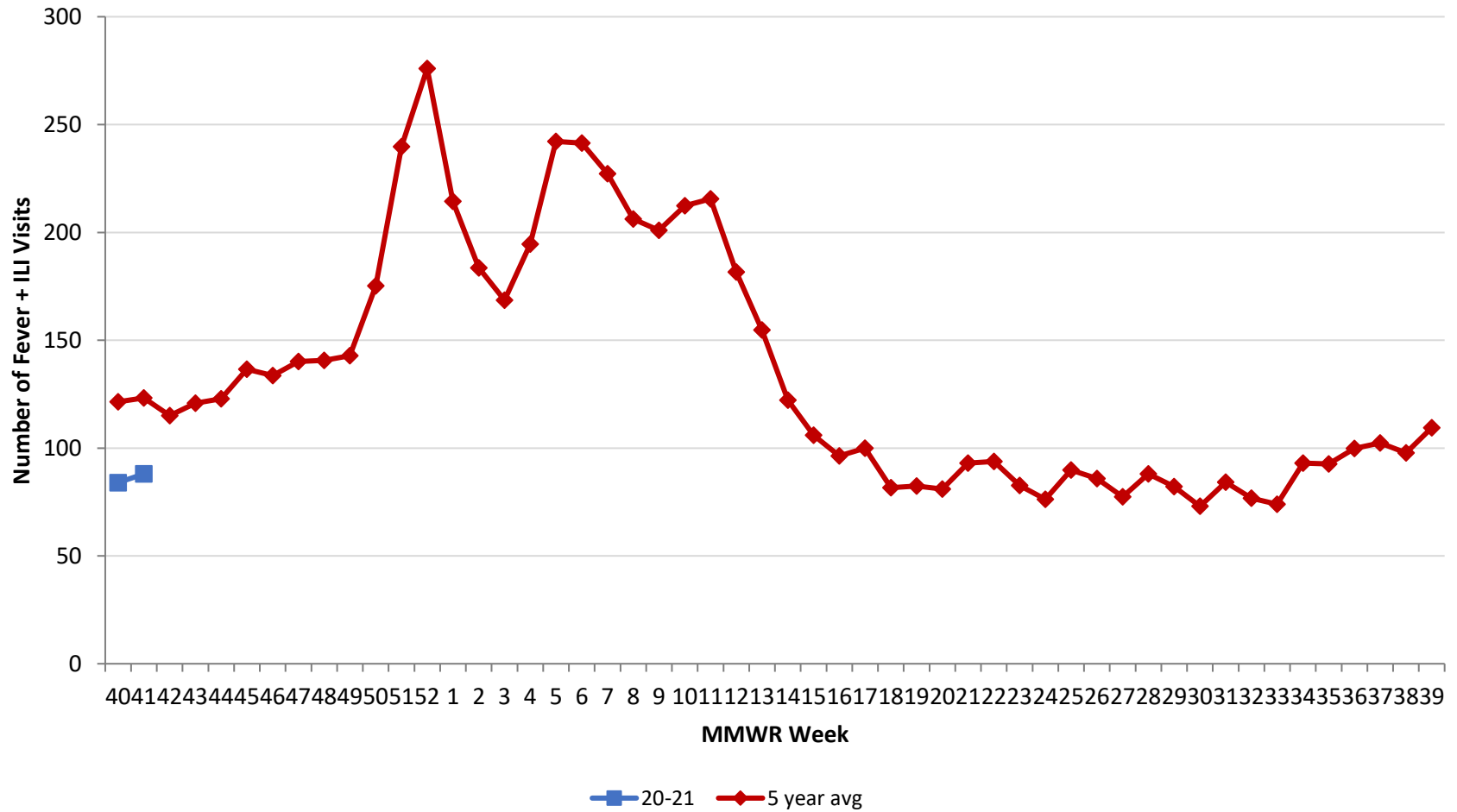
Source: EpiCenter Syndromic Surveillance, Health Monitoring Systems



Montgomery County Fever + ILI Specified ED Visits by MMWR Week with 5-Year Baseline Average; 2020-2021



**Montgomery County Fever + ILI Specified ED Visits by MMWR Week with 5-Year Baseline Average; 2020-2021**



# Total Visits		
MMWR Week	20-21	5-Year Average
40	5,397	6,293.0
41	5,586	6,213.8
42		6,091.6
43		5,980.2
44		6,109.2
45		6,072.2
46		6,047.6
47		5,804.2
48		6,191.8
49		6,125.0
50		6,274.6
51		6,335.0
52		6,644.2
1		6,628.0
2		6,689.2
3		6,427.5
4		6,476.0
5		6,257.4
6		6,340.2
7		6,516.2
8		6,447.2
9		6,294.6
10		6,448.6
11		6,500.6
12		6,126.4
13		5,935.4
14		5,844.6
15		5,853.0
16		5,850.4
17		5,942.4
18		5,744.0
19		5,820.6
20		5,902.8
21		6,142.4
22		6,166.6
23		6,020.4

# Fever + ILI Visits		
MMWR Week	20-21	5-Year Average
40	84	121.4
41	88	123.2
42		115.0
43		120.8
44		122.8
45		136.6
46		133.6
47		140.2
48		140.6
49		142.8
50		175.2
51		239.8
52		276.0
1		214.4
2		183.6
3		168.6
4		194.6
5		242.2
6		241.4
7		227.2
8		206.2
9		201.0
10		212.4
11		215.6
12		181.6
13		154.8
14		122.2
15		106.0
16		96.4
17		100.0
18		81.6
19		82.4
20		81.0
21		93.0
22		93.8
23		82.6

% Fever + ILI Visits		
MMWR Week	20-21	5-Year Average
40	1.6	1.9
41	1.6	2.0
42		1.9
43		2.0
44		2.0
45		2.2
46		2.2
47		2.4
48		2.3
49		2.3
50		2.8
51		3.8
52		4.2
1		3.2
2		2.7
3		2.6
4		3.0
5		3.9
6		3.8
7		3.5
8		3.2
9		3.2
10		3.3
11		3.3
12		3.0
13		2.6
14		2.1
15		1.8
16		1.6
17		1.7
18		1.4
19		1.4
20		1.4
21		1.5
22		1.5
23		1.4