



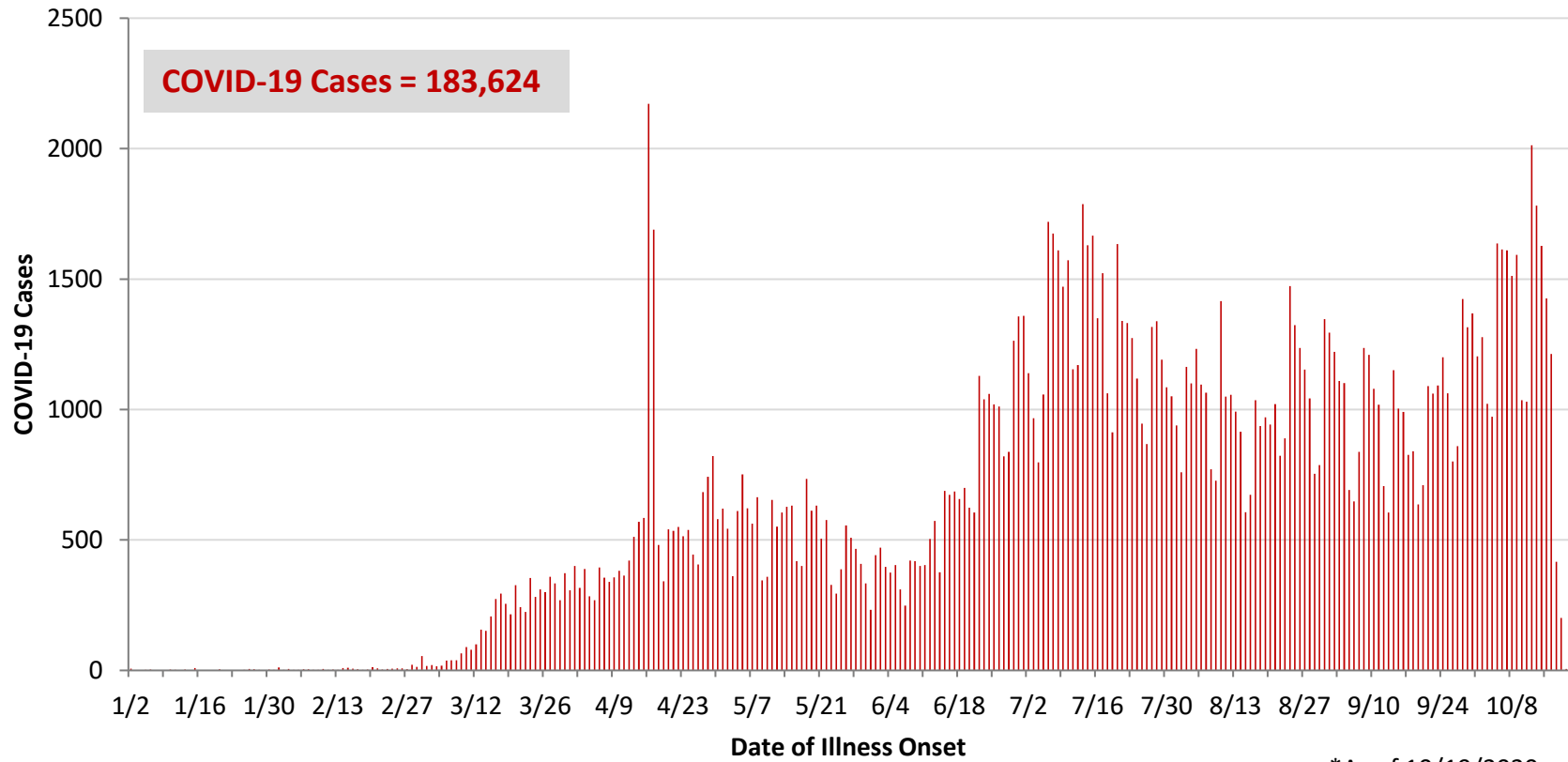
**Ohio, West Central Ohio (WCO), and Montgomery County COVID-19 Cases
As of 10/19/20**

Source: The State of Ohio COVID-19 Dashboard, Ohio Department of Health

Ohio:

Preliminary COVID-19 Cases Ohio, As of 10/19/2020		
Sex	# Cases	% Cases
Female	95,960	52%
Male	86,213	47%
Unknown	1,451	1%
Total	183,624	100%
Age Group		
Age Group	# Cases	% Cases
0-19	23,060	13%
20-29	38,831	21%
30-39	27,209	15%
40-49	24,640	13%
50-59	26,018	14%
60-69	19,811	11%
70-79	12,696	7%
80+	11,210	6%
Unknown	149	0%
Total	183,624	100%
Hospitalized		
Hospitalized	17,172	9.4%
Deaths		
Deaths	5,075	2.8%
Age Group		
Age Group	Deaths	% of Deaths
0-19	2	0%
20-29	13	0%
30-39	36	1%
40-49	83	2%
50-59	290	6%
60-69	698	14%
70-79	1,285	25%
80+	2,668	53%
Total	5,075	100%

**PRELIMINARY COVID-19 Cases by Date of Illness Onset
Ohio, 1/2/20 - 10/19/20***

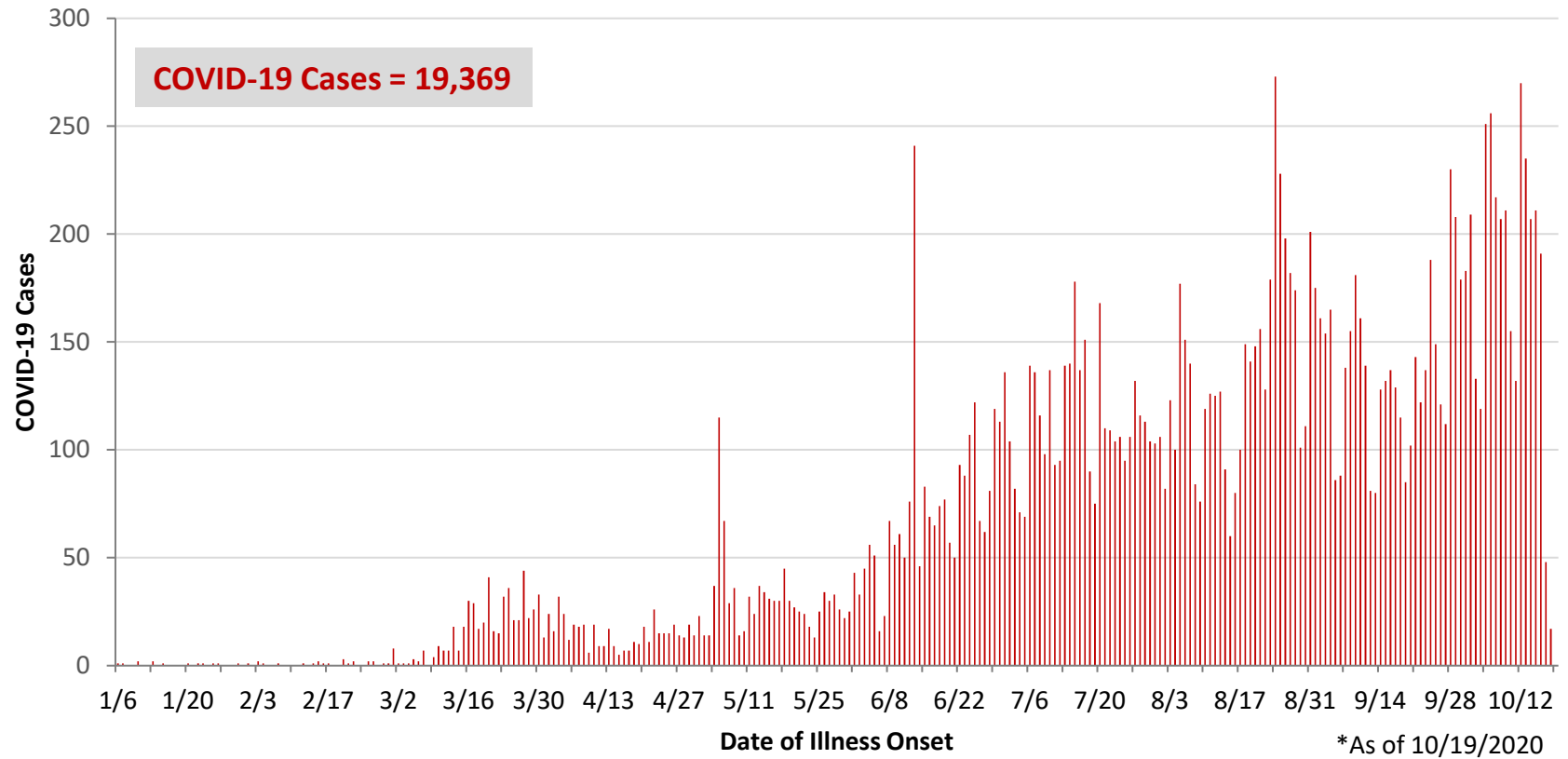


*As of 10/19/2020

WCO:

Preliminary COVID-19 Cases West Central Ohio, As of 10/19/2020		
County	# Cases	% Cases
Champaign	379	2%
Clark	2,379	12%
Darke	1,099	6%
Greene	2,140	11%
Miami	1,927	10%
Montgomery	10,000	52%
Preble	588	3%
Shelby	857	4%
Total	19,369	100%
Sex		
Sex	# Cases	% Cases
Female	10,649	55%
Male	8,437	44%
Unknown	283	1%
Total	19,369	100%
Age Group		
Age Group	# Cases	% Cases
0-19	2,689	14%
20-29	3,937	20%
30-39	2,604	13%
40-49	2,393	12%
50-59	2,710	14%
60-69	2,197	11%
70-79	1,540	8%
80+	1,299	7%
Total	19,369	100%
Hospitalized	1,859	9.6%
Deaths	419	2.2%
Age Group		
Age Group	Deaths	% of Deaths
0-19	1	0%
20-29	3	1%
30-39	4	1%
40-49	9	2%
50-59	22	5%
60-69	56	13%
70-79	95	23%
80+	229	55%
Total	419	100%

**PRELIMINARY COVID-19 Cases by Date of Illness Onset
West Central Ohio, 1/6/20 - 10/19/20***



Montgomery County:

Preliminary COVID-19 Cases Montgomery County, As of 10/19/2020		
Sex	# Cases	% Cases
Female	5,579	56%
Male	4,348	43%
Unknown	73	1%
Total	10,000	100%
Age Group		
Age Group	# Cases	% Cases
0-19	1,578	16%
20-29	2,239	22%
30-39	1,342	13%
40-49	1,215	12%
50-59	1,323	13%
60-69	1,046	10%
70-79	709	7%
80+	546	5%
Unknown	2	0%
Total	10,000	100%
Hospitalized	1,108	11.1%
Deaths	185	1.9%
Age Group	Deaths	% of Deaths
0-19	1	1%
20-29	3	2%
30-39	3	2%
40-49	7	4%
50-59	14	8%
60-69	30	16%
70-79	45	24%
80+	82	44%
Total	185	100%

Age Group	Hospitalizations	% of Age Group Cases
0-19	37	2.3%
20-29	54	2.4%
30-39	89	6.6%
40-49	114	9.4%
50-59	188	14.2%
60-69	217	20.7%
70-79	244	34.4%
80+	165	30.2%
Total	1,108	11.1%

Source: Ohio Disease Reporting System, ODH

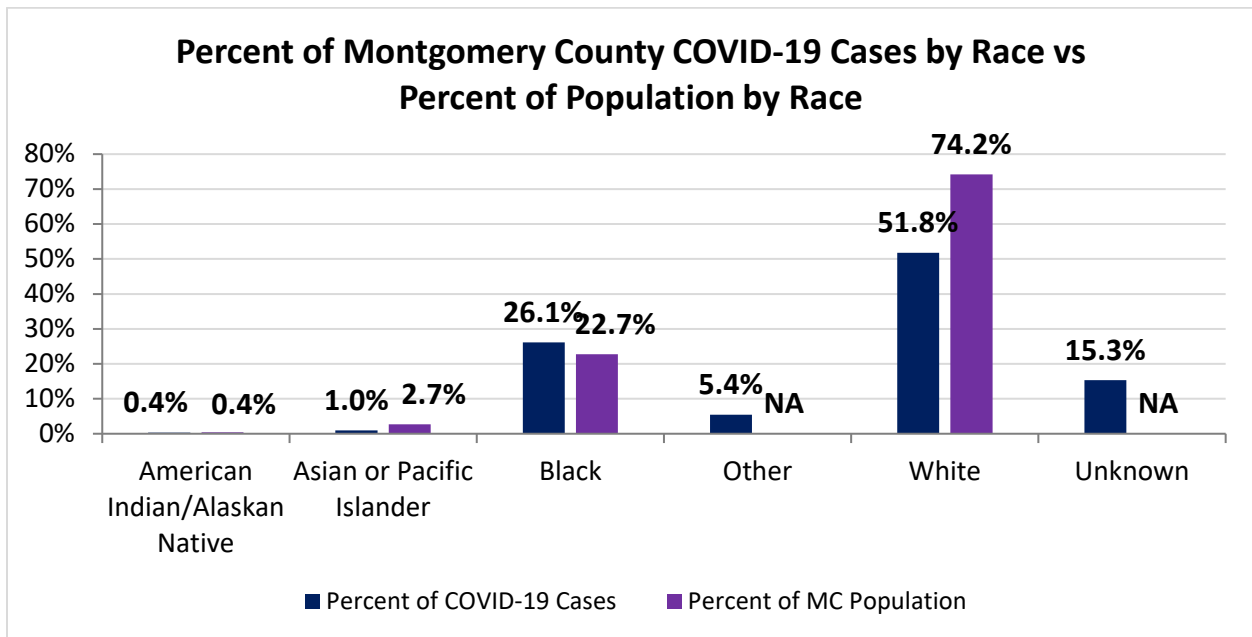
Note. All rates are per 100,000 population.

Montgomery County COVID-19 Cases by Race As of 10/19/20				
Race	Count	Percent	Case Rate	Rate Interpretation**
American Indian/Alaskan Native (AI/AN)*	35	0.4%	1,636.3	1 in 61
Asian	96	1.0%	680.9	1 in 147
Black	2,560	26.1%	2,117.3	1 in 47
Other	532	5.4%	NA	NA
White	5,079	51.8%	1,287.3	1 in 78
Unknown	1,501	15.3%	NA	NA
Total	9,803	100%	1,843.8	1 in 54

*Note. AI/ANs account for 0.4% of Montgomery County's population, and therefore, rates for this population will be large and may be misleading.

**Rate interpretation represents the number of cases for the given population.

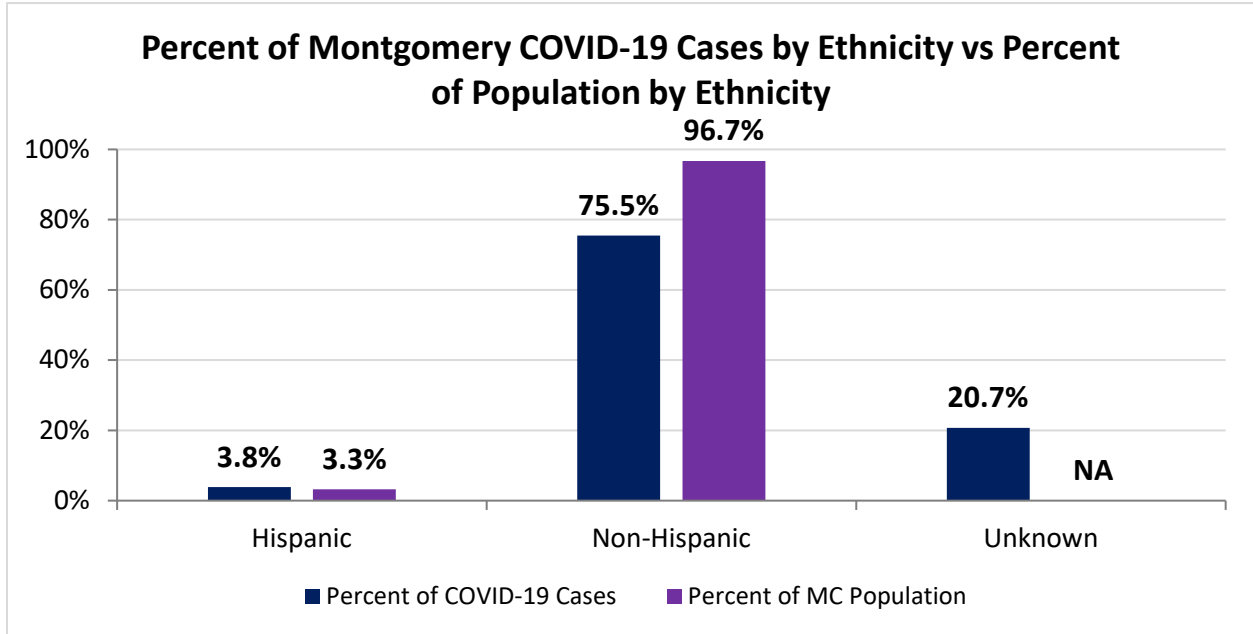
Example - there is a total of 1 case for every 54 Montgomery County residents.



Montgomery County COVID-19 Deaths by Race as of 10/19/2020		
Race	Count	Death Rate
American Indian/Alaskan Native	3	140.3
Asian or Pacific Islander	4	28.4
Black	67	55.4
Other	2	NA
White	112	28.4
Unknown	0	NA
Total	188	35.4

Montgomery County COVID-19 Cases by Ethnicity As of 10/19/20				
Ethnicity	Count	Percent	Case Rate	Rate Interpretation**
Hispanic	375	3.8%	2,164.1	1 in 46
Non-Hispanic	7,400	75.5%	1,438.7	1 in 70
Unknown	2,028	20.7%	NA	NA
Total	9,803	100%	1,843.8	1 in 54

**Rate interpretation represents the number of cases for the given population.
 Example - there is a total of 1 case for every 54 Montgomery County residents.



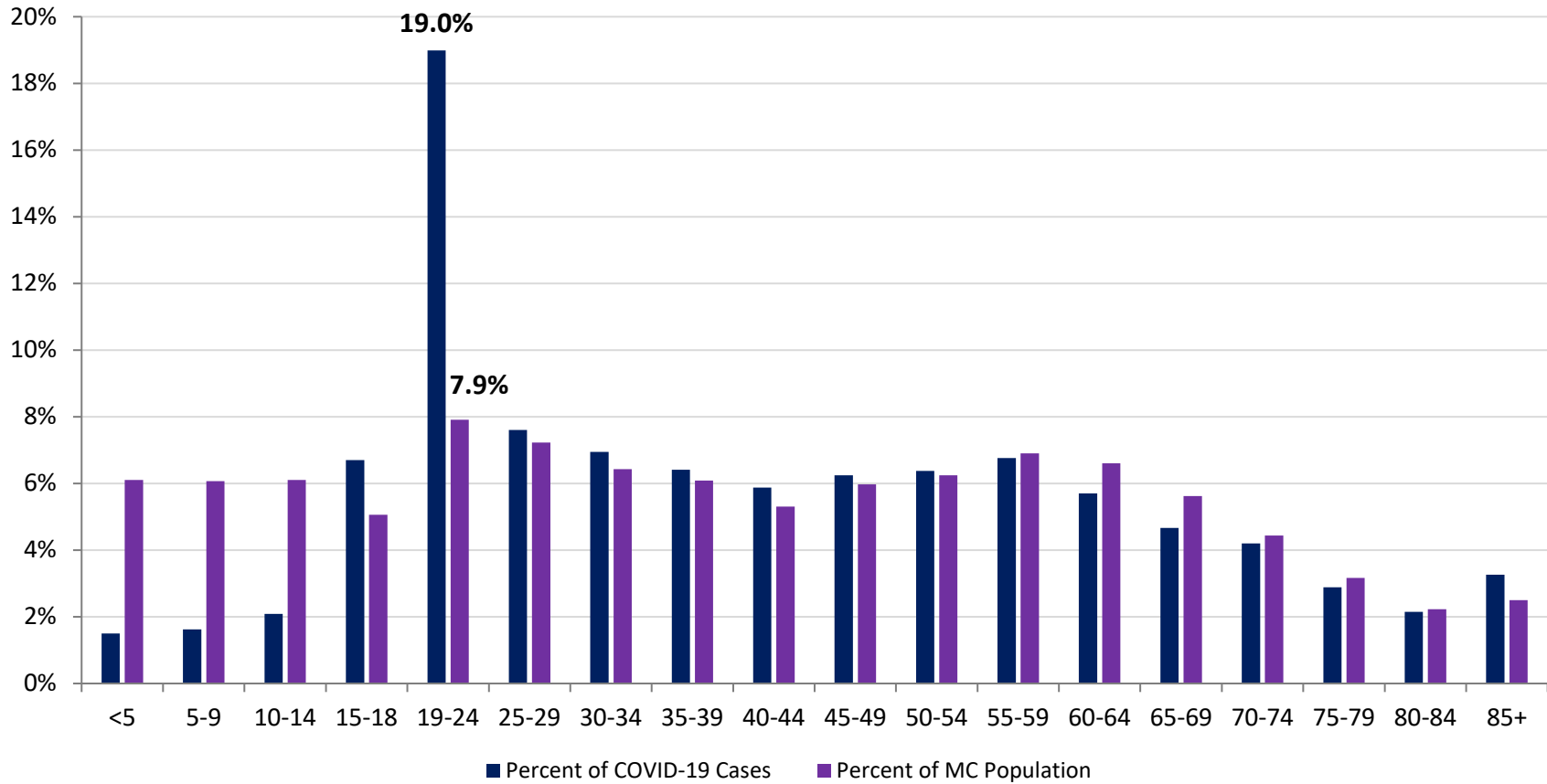
Montgomery County COVID-19 Cases by Health Care Worker Status As of 10/19/20		
Status	#	%
Health Care Worker	920	9.4%
Non-Health Care Worker	5,758	58.7%
Unknown	3,125	31.9%
Total	9,803	100%

Montgomery County COVID-19 Cases Age Range As of 10/19/20	
Stat	Age in Years
Age Range	<1 - 104
Average Age	41.3
Median Age	38.0

Montgomery County COVID-19 Cases by Age Group As of 10/19/20						
Age Group	Total Cases	Total Case Rate	Percent of COVID-19 Cases	Percent of MC Population	Current Cases*	Current Case Rate*
<5	147	450.6	1.5%	6.1%	16	49.0
5-9	159	493.9	1.6%	6.1%	20	62.1
10-14	205	638.7	2.1%	6.1%	29	90.4
15-18	657	2,487.4	6.7%	5.1%	129	488.4
19-24	1,861	4,421.5	19.0%	7.9%	182	432.4
25-29	745	1,942.4	7.6%	7.2%	122	318.1
30-34	681	1,947.9	6.9%	6.4%	118	337.5
35-39	628	1,945.4	6.4%	6.1%	110	340.8
40-44	576	2,004.4	5.9%	5.3%	109	379.3
45-49	612	1,997.5	6.2%	6.0%	106	346.0
50-54	625	1,935.9	6.4%	6.2%	145	449.1
55-59	663	1,829.8	6.8%	6.9%	135	372.6
60-64	559	1,581.2	5.7%	6.6%	112	316.8
65-69	457	1,512.2	4.7%	5.6%	108	357.4
70-74	412	1,670.3	4.2%	4.4%	71	287.8
75-79	283	1,646.3	2.9%	3.2%	64	372.3
80-84	211	1,761.4	2.2%	2.2%	35	292.2
85+	320	2,392.2	3.3%	2.5%	77	575.6
Total	9,801	1,843.4	100%	100%	1,688	317.5

*Current Cases – cases with symptom onset in the past 21 days. Current Case Rate – current cases per 100,000.

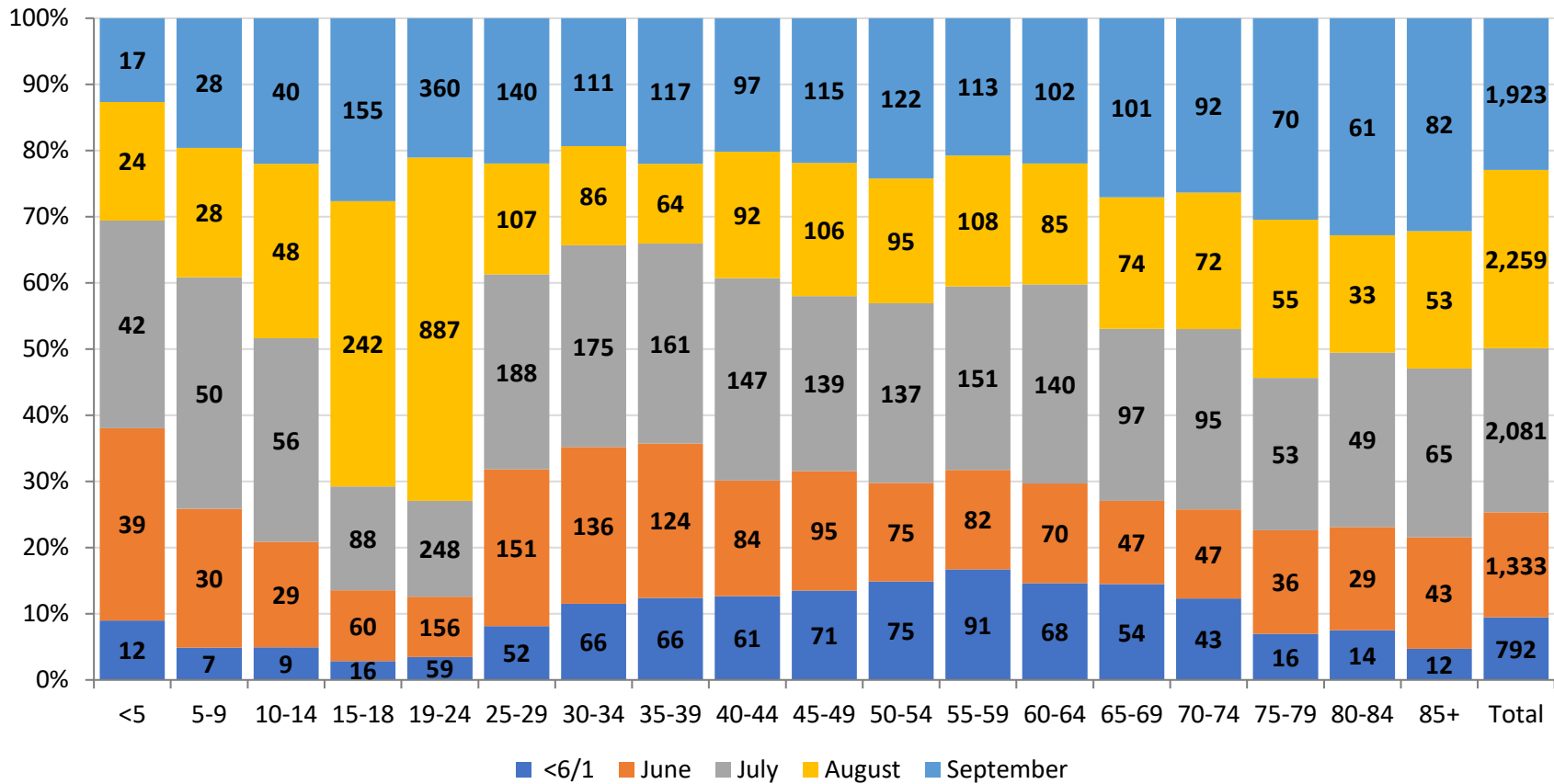
Percent of Montgomery County COVID-19 Cases by Age Group vs Percent of Population by Age Group



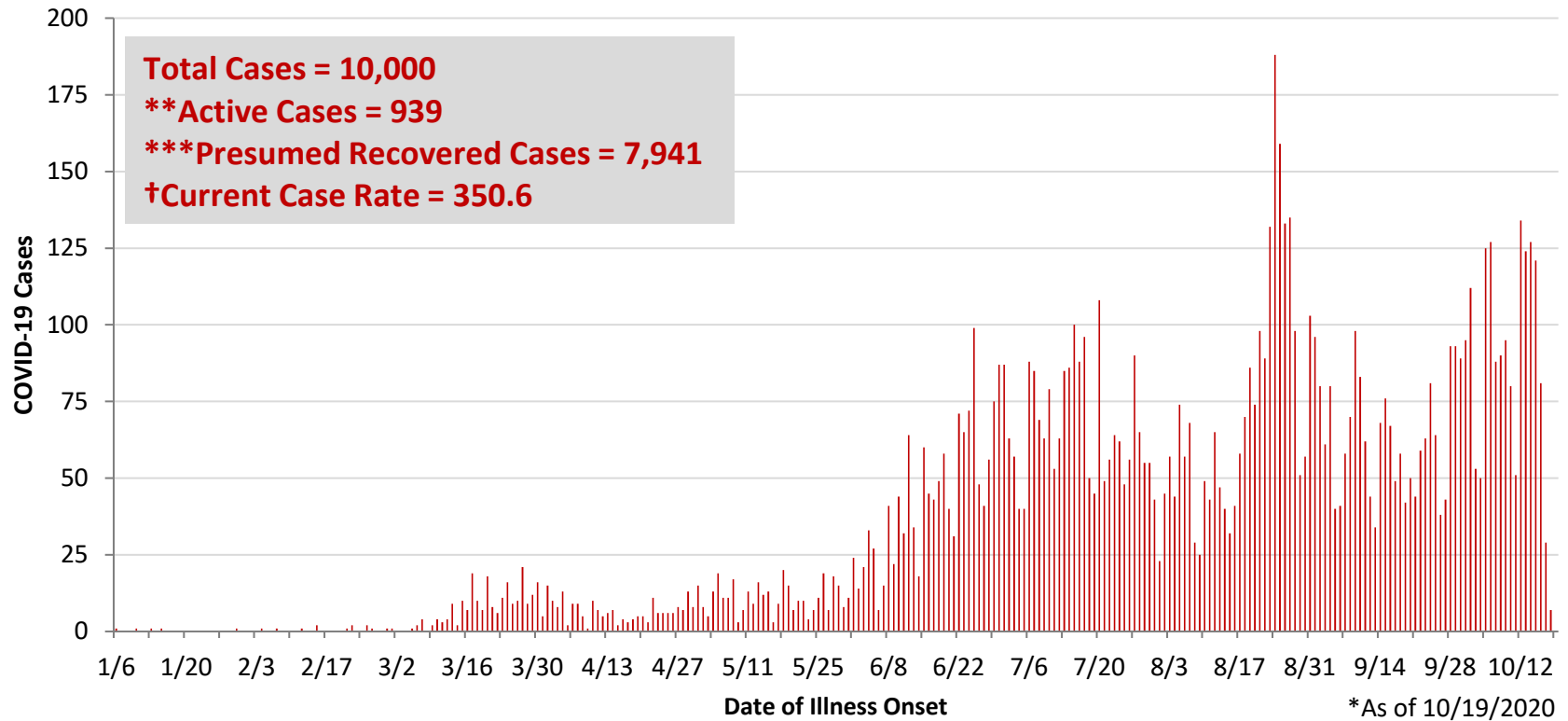
PRELIMINARY Montgomery County COVID-19 Cases by Age Group and by Month As of 10/19/20							
Age Group	Cases <6/1	Cases June	Cases July	Cases August	Cases September	Total Cases	% Change Aug to Sep
<5	12	39	42	24	17	134	-29%
5-9	7	30	50	28	28	143	0%
10-14	9	29	56	48	40	182	-17%
15-18	16	60	88	242	155	561	-36%
19-24	59	156	248	887	360	1,710	-59%
25-29	52	151	188	107	140	638	31%
30-34	66	136	175	86	111	574	29%
35-39	66	124	161	64	117	532	83%
40-44	61	84	147	92	97	481	5%
45-49	71	95	139	106	115	526	8%
50-54	75	75	137	95	122	504	28%
55-59	91	82	151	108	113	545	5%
60-64	68	70	140	85	102	465	20%
65-69	54	47	97	74	101	373	36%
70-74	43	47	95	72	92	349	28%
75-79	16	36	53	55	70	230	27%
80-84	14	29	49	33	61	186	85%
85+	12	43	65	53	82	255	55%
Total	792	1,333	2,081	2,259	1,923	8,388	-15%

PRELIMINARY Montgomery County COVID-19 Case Rate by Age Group and by Month As of 10/19/20							
Age Group	Case Rate <6/1	Case Rate June	Case Rate July	Case Rate August	Case Rate September	Overall Case Rate	% Change Aug to Sep
<5	36.8	119.6	128.7	73.6	52.1	410.8	-29%
5-9	21.7	93.2	155.3	87.0	87.0	444.2	0%
10-14	28.0	90.4	174.5	149.6	124.6	567.1	-17%
15-18	60.6	227.2	333.2	916.2	586.8	2124.0	-36%
19-24	140.2	370.6	589.2	2107.4	855.3	4062.7	-59%
25-29	135.6	393.7	490.2	279.0	365.0	1663.4	31%
30-34	188.8	389.0	500.6	246.0	317.5	1641.8	29%
35-39	204.5	384.1	498.7	198.3	362.4	1648.0	83%
40-44	212.3	292.3	511.5	320.1	337.5	1673.8	5%
45-49	231.7	310.1	453.7	346.0	375.3	1716.8	8%
50-54	232.3	232.3	424.3	294.3	377.9	1561.1	28%
55-59	251.1	226.3	416.7	298.1	311.9	1504.1	5%
60-64	192.3	198.0	396.0	240.4	288.5	1315.3	20%
65-69	178.7	155.5	321.0	244.9	334.2	1234.2	36%
70-74	174.3	190.5	385.1	291.9	373.0	1414.9	28%
75-79	93.1	209.4	308.3	320.0	407.2	1338.0	27%
80-84	116.9	242.1	409.0	275.5	509.2	1552.7	85%
85+	89.7	321.4	485.9	396.2	613.0	1906.3	55%
Total	149.0	250.7	391.4	424.9	361.7	1,577.6	-15%

COVID-19 Cases by Age Group and Month as of 10/19/2020



**PRELIMINARY COVID-19 Cases by Date of Illness Onset
Montgomery County, 1/10/20 - 10/19/20***

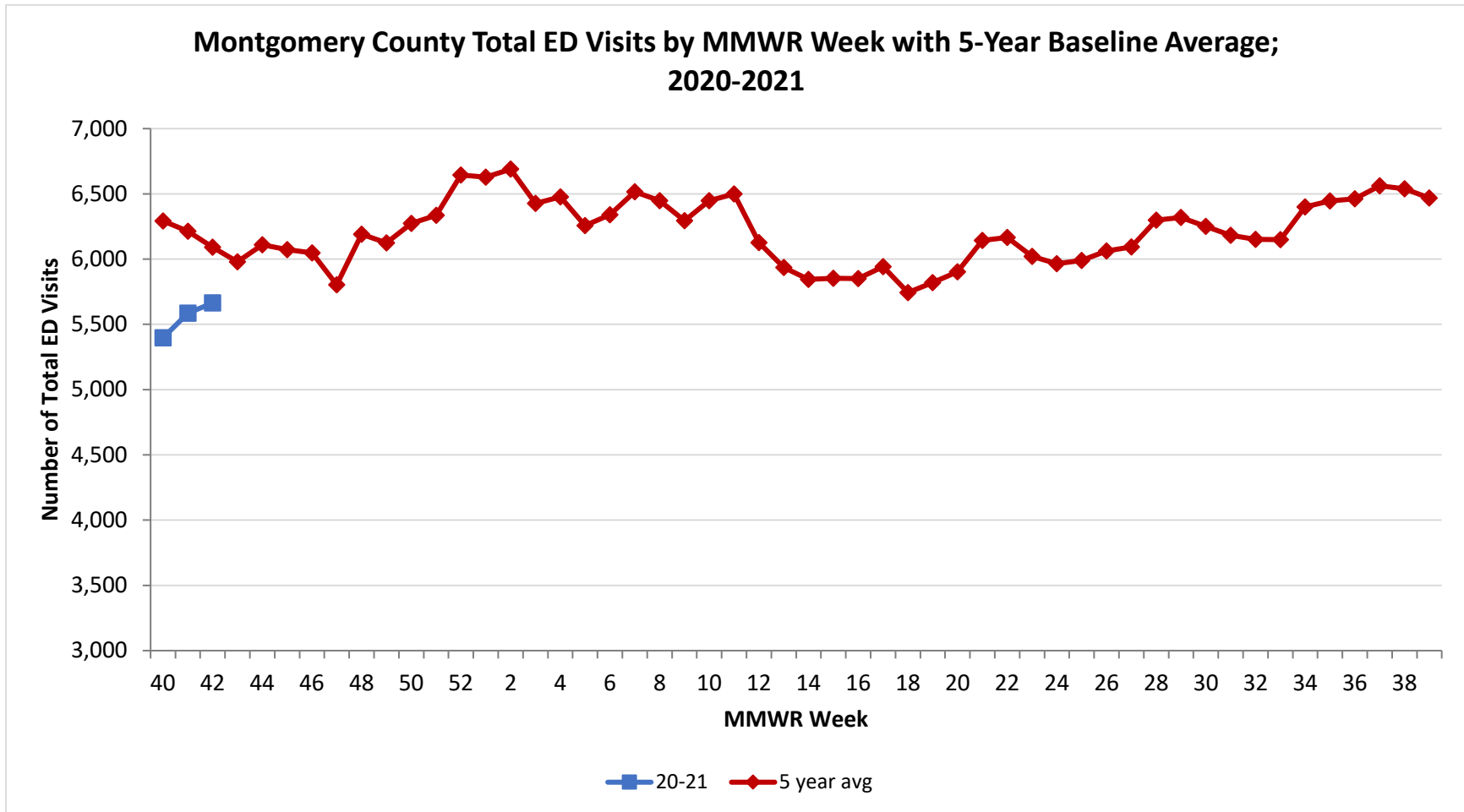


**Active cases are based on the reported illness onset date (using a 10-day window) of reported cases.

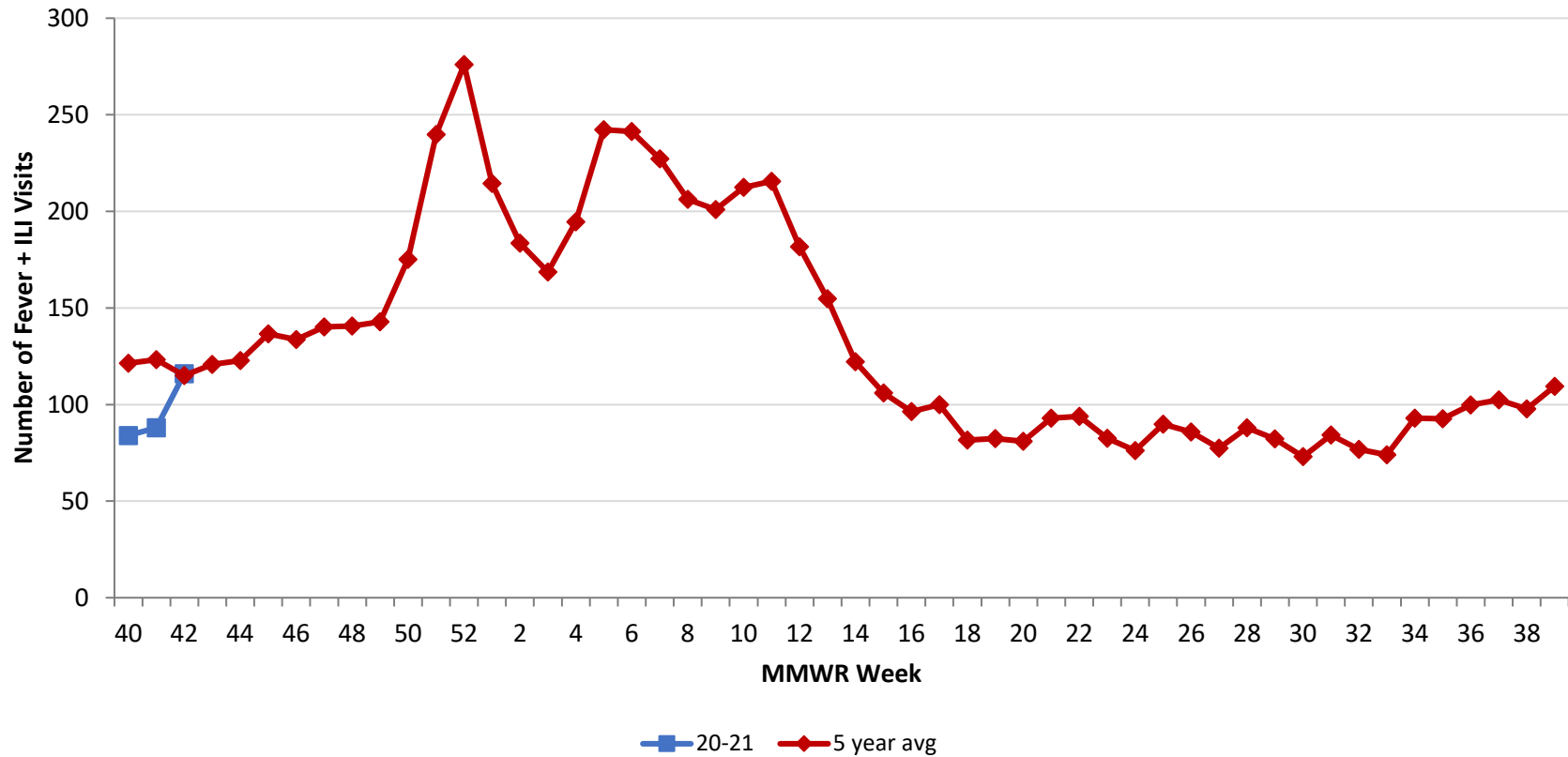
***Presumed recovered is defined as cases with a symptom onset date >21 days prior who are not deceased.

†Current Case Rate – current cases (symptom onset past 21 days) per 100,000.

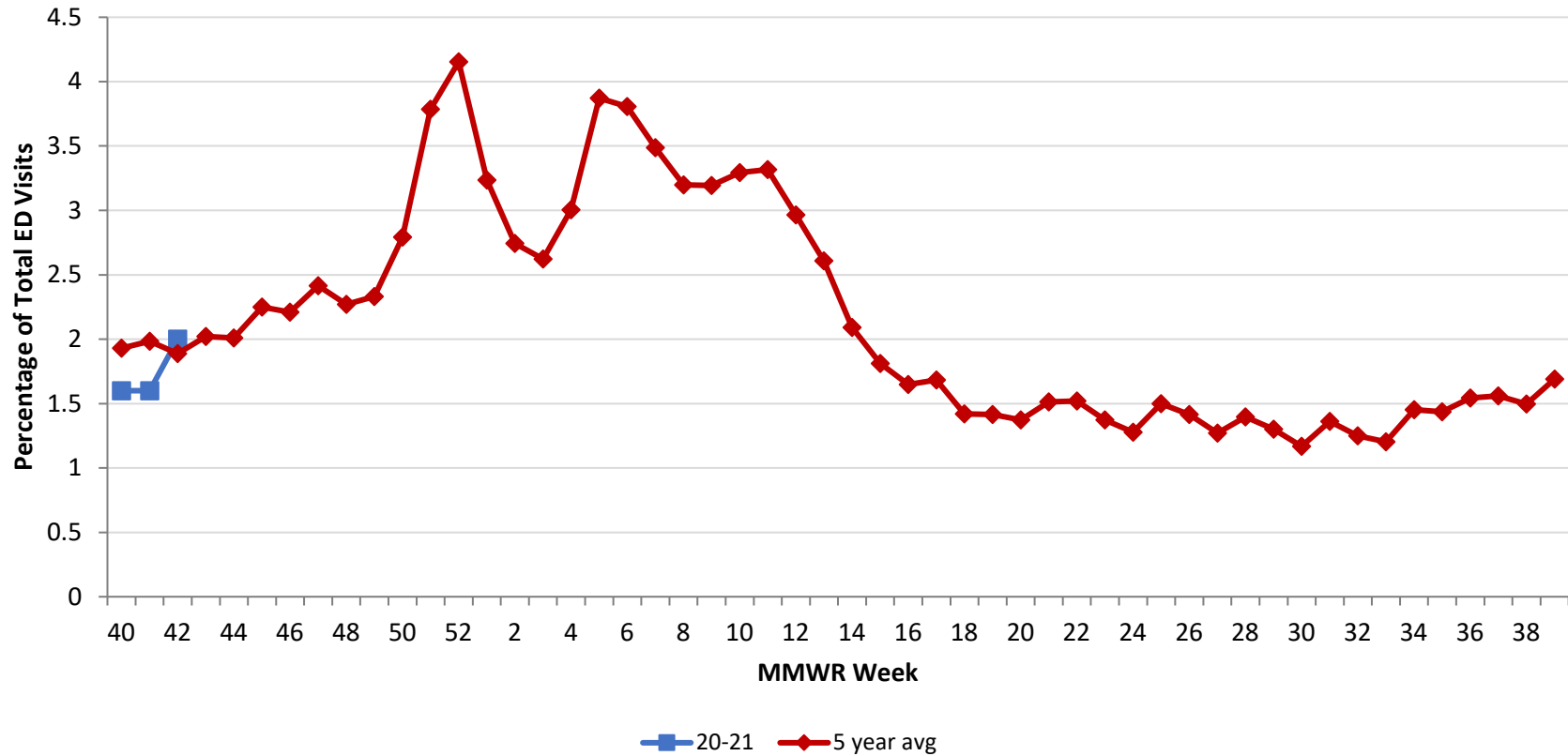
Source: EpiCenter Syndromic Surveillance, Health Monitoring Systems



Montgomery County Fever + ILI Specified ED Visits by MMWR Week with 5-Year Baseline Average; 2020-2021



Montgomery County Fever + ILI Specified ED Visits (% of Total Visits) by MMWR Week with 5-Year Baseline Average; 2020-2021



# Total Visits		
MMWR Week	20-21	5-Year Average
40	5,397	6,293.0
41	5,586	6,213.8
42	5,664	6,091.6
43		5,980.2
44		6,109.2
45		6,072.2
46		6,047.6
47		5,804.2
48		6,191.8
49		6,125.0
50		6,274.6
51		6,335.0
52		6,644.2
1		6,628.0
2		6,689.2
3		6,427.5
4		6,476.0
5		6,257.4
6		6,340.2
7		6,516.2
8		6,447.2
9		6,294.6
10		6,448.6
11		6,500.6
12		6,126.4
13		5,935.4
14		5,844.6
15		5,853.0
16		5,850.4
17		5,942.4
18		5,744.0
19		5,820.6
20		5,902.8
21		6,142.4
22		6,166.6
23		6,020.4

# Fever + ILI Visits		
MMWR Week	20-21	5-Year Average
40	84	121.4
41	88	123.2
42	116	115.0
43		120.8
44		122.8
45		136.6
46		133.6
47		140.2
48		140.6
49		142.8
50		175.2
51		239.8
52		276.0
1		214.4
2		183.6
3		168.6
4		194.6
5		242.2
6		241.4
7		227.2
8		206.2
9		201.0
10		212.4
11		215.6
12		181.6
13		154.8
14		122.2
15		106.0
16		96.4
17		100.0
18		81.6
19		82.4
20		81.0
21		93.0
22		93.8
23		82.6

% Fever + ILI Visits		
MMWR Week	20-21	5-Year Average
40	1.6	1.9
41	1.6	2.0
42	2.0	1.9
43		2.0
44		2.0
45		2.2
46		2.2
47		2.4
48		2.3
49		2.3
50		2.8
51		3.8
52		4.2
1		3.2
2		2.7
3		2.6
4		3.0
5		3.9
6		3.8
7		3.5
8		3.2
9		3.2
10		3.3
11		3.3
12		3.0
13		2.6
14		2.1
15		1.8
16		1.6
17		1.7
18		1.4
19		1.4
20		1.4
21		1.5
22		1.5
23		1.4