



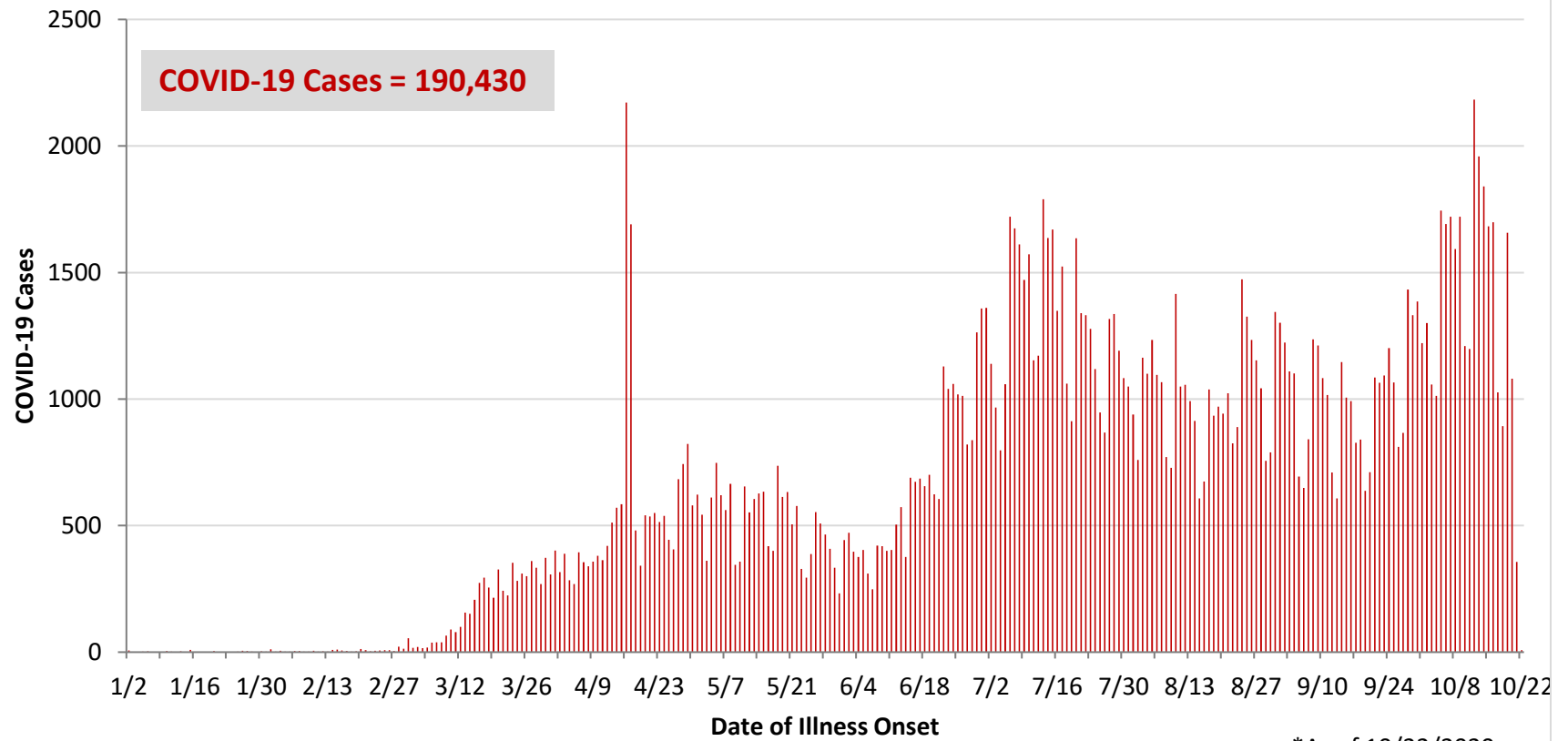
**Ohio, West Central Ohio (WCO), and Montgomery County COVID-19 Cases  
As of 10/22/20**

**Source:** The State of Ohio COVID-19 Dashboard, Ohio Department of Health

**Ohio:**

<b>Preliminary COVID-19 Cases Ohio, As of 10/22/2020</b>		
<b>Sex</b>	<b># Cases</b>	<b>% Cases</b>
Female	99,665	52%
Male	89,264	47%
Unknown	1,501	1%
<b>Total</b>	<b>190,430</b>	<b>100%</b>
<b>Age Group</b>		
<b>Age Group</b>	<b># Cases</b>	<b>% Cases</b>
0-19	23,891	13%
20-29	39,998	21%
30-39	28,134	15%
40-49	25,554	13%
50-59	27,163	14%
60-69	20,700	11%
70-79	13,243	7%
80+	11,588	6%
Unknown	159	0%
<b>Total</b>	<b>190,430</b>	<b>100%</b>
<b>Hospitalized</b>		
Hospitalized	17,682	9.3%
<b>Deaths</b>		
Deaths	5,161	2.7%
<b>Age Group</b>		
<b>Age Group</b>	<b>Deaths</b>	<b>% of Deaths</b>
0-19	2	0%
20-29	13	0%
30-39	37	1%
40-49	83	2%
50-59	293	6%
60-69	711	14%
70-79	1,311	25%
80+	2,711	53%
<b>Total</b>	<b>5,161</b>	<b>100%</b>

**PRELIMINARY COVID-19 Cases by Date of Illness Onset  
Ohio, 1/2/20 - 10/22/20\***

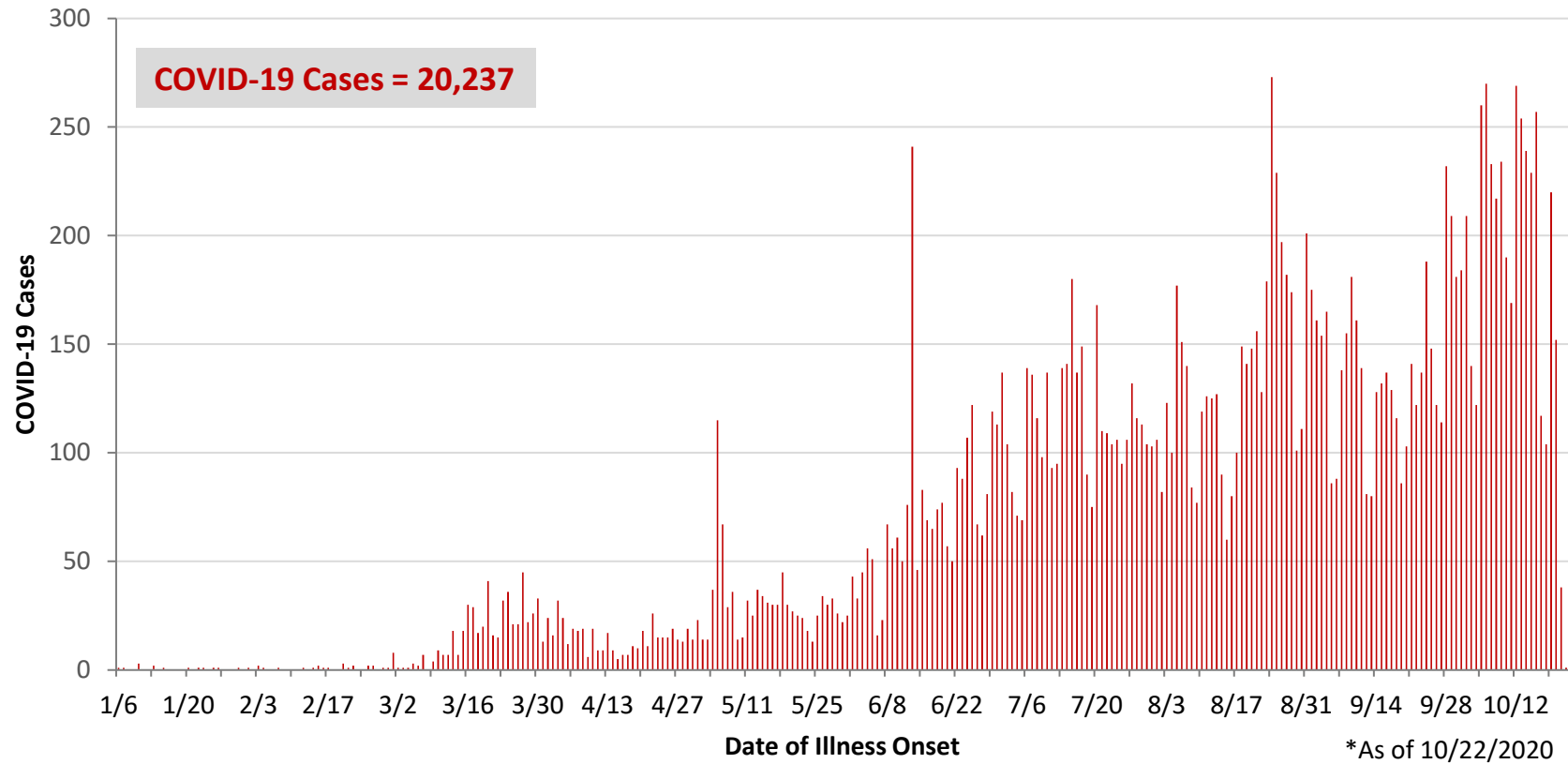


\*As of 10/22/2020

WCO:

Preliminary COVID-19 Cases West Central Ohio, As of 10/22/2020		
County	# Cases	% Cases
Champaign	398	2%
Clark	2,494	12%
Darke	1,144	6%
Greene	2,292	11%
Miami	1,999	10%
Montgomery	10,377	51%
Preble	624	3%
Shelby	909	4%
<b>Total</b>	<b>20,237</b>	<b>100%</b>
Sex		
Sex	# Cases	% Cases
Female	11,136	55%
Male	8,826	44%
Unknown	275	1%
<b>Total</b>	<b>20,237</b>	<b>100%</b>
Age Group		
Age Group	# Cases	% Cases
0-19	2,790	14%
20-29	4,073	20%
30-39	2,724	13%
40-49	2,526	12%
50-59	2,861	14%
60-69	2,314	11%
70-79	1,613	8%
80+	1,336	7%
<b>Total</b>	<b>20,237</b>	<b>100%</b>
Hospitalized	1,952	9.6%
Deaths	431	2.1%
Age Group		
Age Group	Deaths	% of Deaths
0-19	1	0%
20-29	3	1%
30-39	5	1%
40-49	9	2%
50-59	22	5%
60-69	60	14%
70-79	98	23%
80+	233	54%
<b>Total</b>	<b>431</b>	<b>100%</b>

**PRELIMINARY COVID-19 Cases by Date of Illness Onset  
West Central Ohio, 1/6/20 - 10/22/20\***



**Montgomery County:**

<b>Preliminary COVID-19 Cases Montgomery County, As of 10/22/2020</b>		
<b>Sex</b>	<b># Cases</b>	<b>% Cases</b>
Female	5,776	56%
Male	4,527	44%
Unknown	74	1%
<b>Total</b>	<b>10,377</b>	<b>100%</b>
<b>Age Group</b>		
<b>Age Group</b>	<b># Cases</b>	<b>% Cases</b>
0-19	1,623	16%
20-29	2,298	22%
30-39	1,391	13%
40-49	1,281	12%
50-59	1,388	13%
60-69	1,101	11%
70-79	732	7%
80+	561	5%
Unknown	2	0%
<b>Total</b>	<b>10,377</b>	<b>100%</b>
<b>Hospitalized</b>		
Hospitalized	1,161	11.2%
<b>Deaths</b>		
Deaths	189	1.8%
<b>Age Group</b>	<b>Deaths</b>	<b>% of Deaths</b>
0-19	1	1%
20-29	3	2%
30-39	3	2%
40-49	7	4%
50-59	14	7%
60-69	32	17%
70-79	47	25%
80+	82	43%
<b>Total</b>	<b>189</b>	<b>100%</b>

<b>Age Group</b>	<b>Hospitalizations</b>	<b>% of Age Group Cases</b>
0-19	37	2.3%
20-29	57	2.5%
30-39	93	6.7%
40-49	121	9.4%
50-59	193	13.9%
60-69	232	21.1%
70-79	255	34.8%
80+	173	30.8%
<b>Total</b>	<b>1,161</b>	<b>11.2%</b>

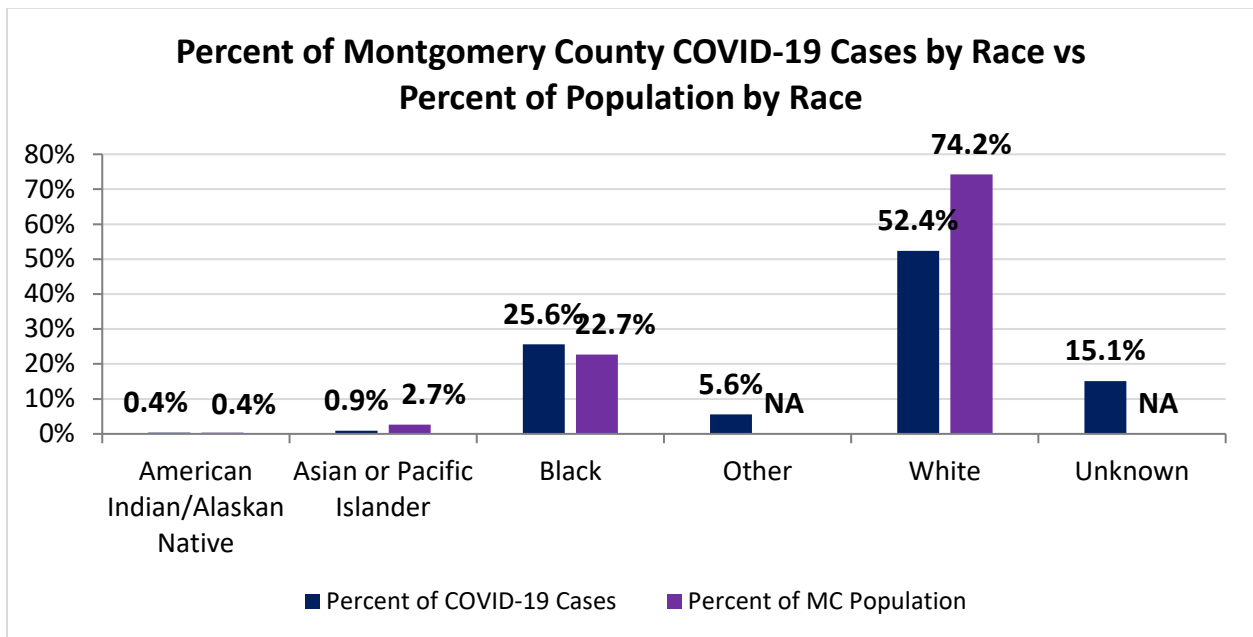
Source: Ohio Disease Reporting System, ODH

Note. All rates are per 100,000 population.

Montgomery County COVID-19 Cases by Race As of 10/22/20				
Race	Total Cases	Case Rate	Current Cases*	Current Case Rate*
American Indian/Alaskan Native (AI/AN)*	36	1,683.0	2	93.5
Asian	91	645.5	17	120.6
Black	2,631	2,176.0	256	211.7
Other	577	NA	139	NA
White	5,379	1,363.4	1074	272.2
Unknown	1,550	NA	379	NA
<b>Total</b>	<b>10,264</b>	<b>1,930.5</b>	<b>1,867</b>	<b>351.1</b>

\*Note. AI/ANs account for 0.4% of Montgomery County's population, and therefore, rates for this population will be large and may be misleading.

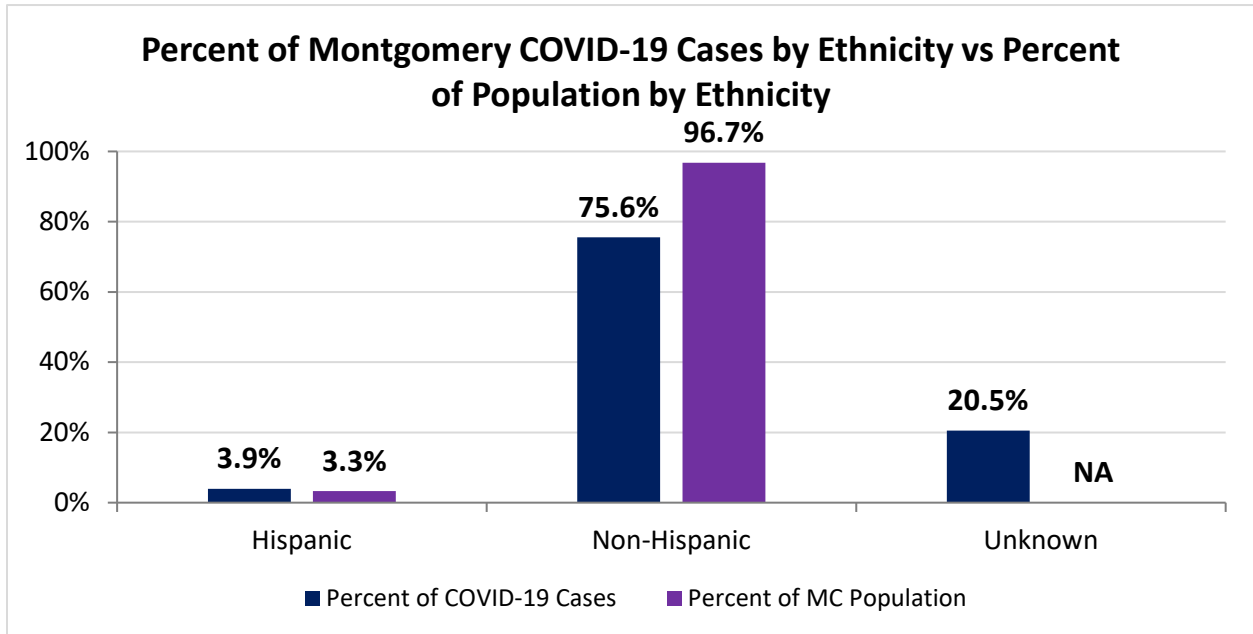
\*Current Cases – cases with symptom onset in the past 21 days. Current Case Rate – current cases per 100,000



Montgomery County COVID-19 Deaths by Race as of 10/22/2020		
Race	Count	Death Rate
American Indian/Alaskan Native	3	140.3
Asian or Pacific Islander	4	28.4
Black	68	56.2
Other	2	NA
White	113	28.6
Unknown	0	NA
<b>Total</b>	<b>190</b>	<b>35.7</b>

<b>Montgomery County COVID-19 Cases by Ethnicity As of 10/22/20</b>				
<b>Ethnicity</b>	<b>Total Cases</b>	<b>Case Rate</b>	<b>Current Cases*</b>	<b>Current Case Rate*</b>
Hispanic	404	2,331.5	62	357.8
Non-Hispanic	7,757	1,508.1	1341	260.7
Unknown	2,103	NA	464	NA
<b>Total</b>	<b>10,264</b>	<b>1,930.5</b>	<b>1,867</b>	<b>351.1</b>

\*Current Cases – cases with symptom onset in the past 21 days. Current Case Rate – current cases per 100,000



<b>Montgomery County COVID-19 Cases by Health Care Worker Status As of 10/22/20</b>		
<b>Status</b>	<b>#</b>	<b>%</b>
Health Care Worker	981	9.6%
Non-Health Care Worker	6,064	59.1%
Unknown	3,219	31.4%
<b>Total</b>	<b>10,264</b>	<b>100%</b>

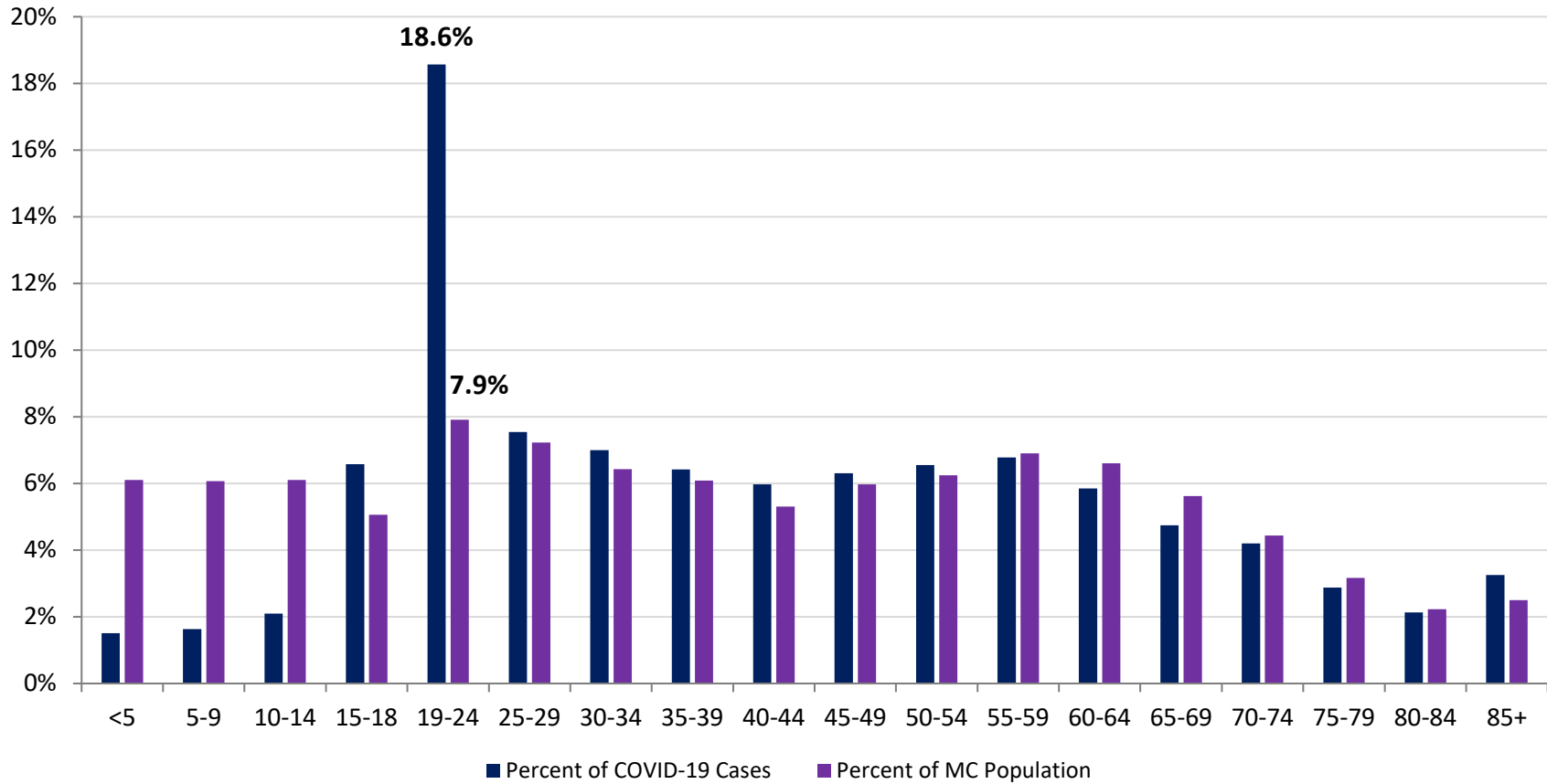
<b>Montgomery County COVID-19 Cases Age Range As of 10/22/20</b>	
<b>Stat</b>	<b>Age in Years</b>
Age Range	<1 - 104
Average Age	41.5
Median Age	38.0

<b>Montgomery County COVID-19 Cases by Age Group As of 10/22/20</b>				
<b>Age Group</b>	<b>Total Cases</b>	<b>Total Case Rate</b>	<b>Current Cases*</b>	<b>Current Case Rate*</b>
<5	155	475.1	21	64.4
5-9	167	518.8	24	74.6
10-14	215	669.9	33	102.8
15-18	675	2,555.6	114	431.6
19-24	1905	4,526.0	194	460.9
25-29	774	2,018.0	135	352.0
30-34	718	2,053.7	144	411.9
35-39	659	2,041.4	127	393.4
40-44	613	2,133.1	132	459.3
45-49	647	2,111.7	120	391.7
50-54	672	2,081.5	168	520.4
55-59	696	1,920.8	150	414.0
60-64	600	1,697.2	135	381.9
65-69	487	1,611.5	113	373.9
70-74	431	1,747.3	81	328.4
75-79	295	1,716.1	64	372.3
80-84	219	1,828.2	33	275.5
85+	334	2,496.8	78	583.1
<b>Total</b>	<b>10,262</b>	<b>1,930.1</b>	<b>1,866</b>	<b>351.0</b>

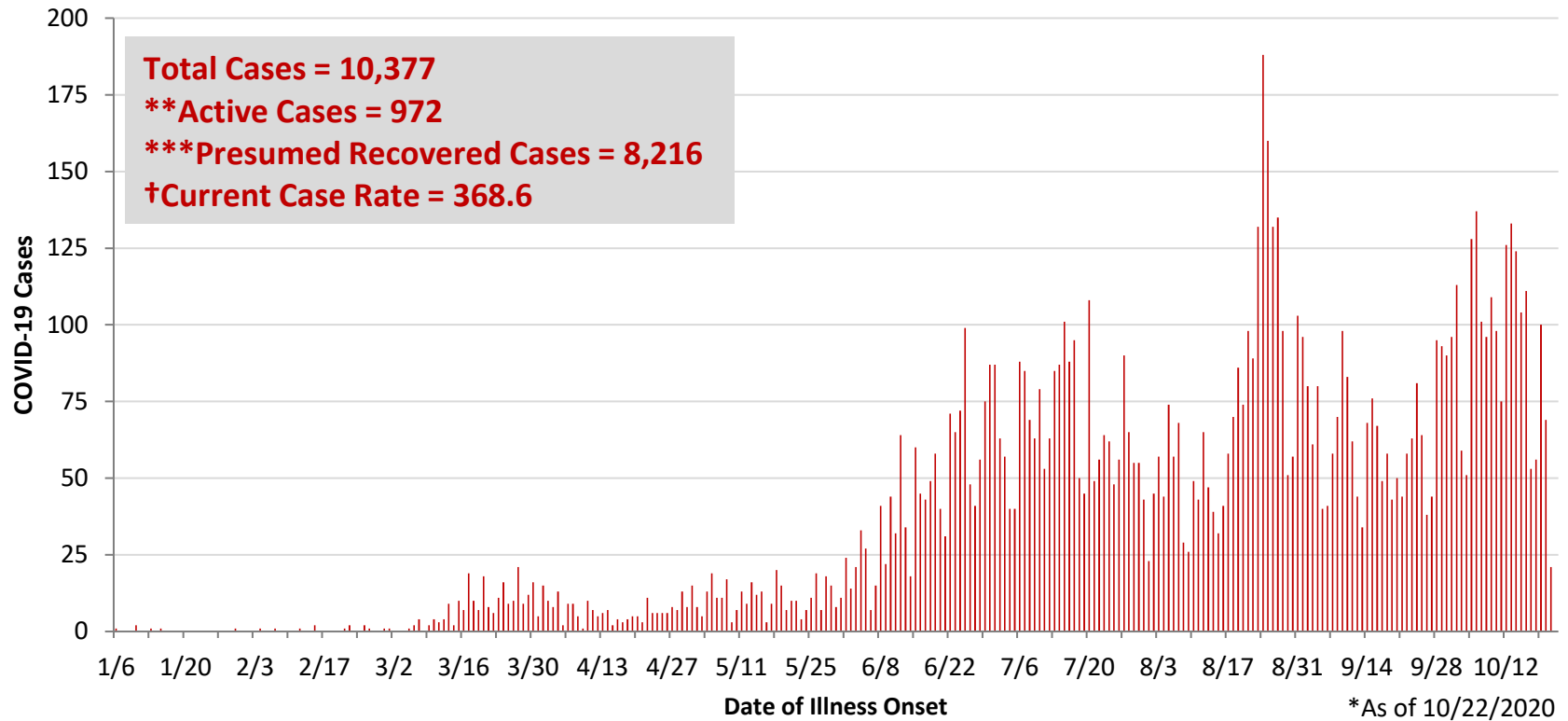
\*Current Cases – cases with symptom onset in the past 21 days. Current Case Rate – current cases per 100,000.



**Percent of Montgomery County COVID-19 Cases by Age Group vs Percent of Population by Age Group**



**PRELIMINARY COVID-19 Cases by Date of Illness Onset  
Montgomery County, 1/10/20 - 10/22/20\***

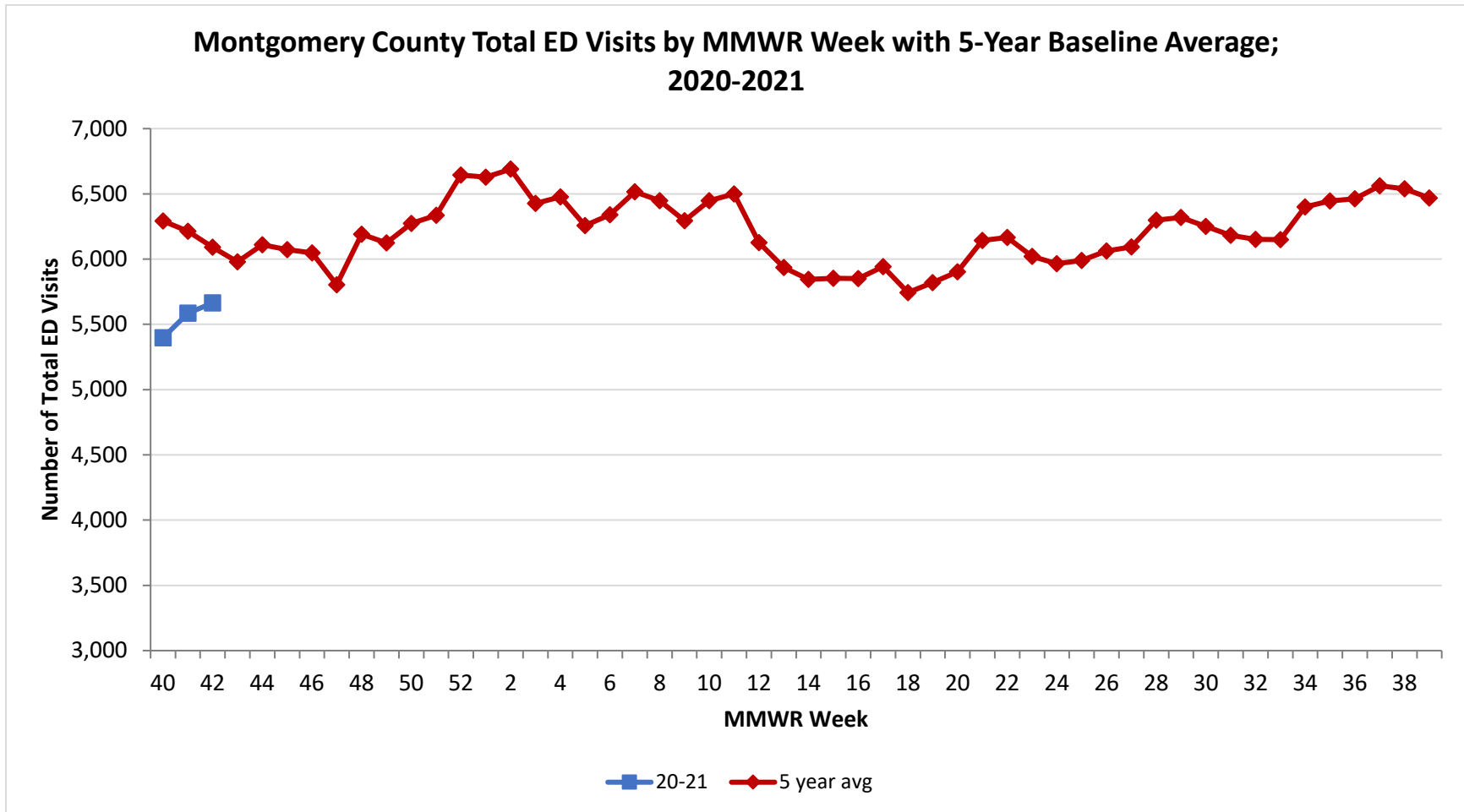


\*\*Active cases are based on the reported illness onset date (using a 10-day window) of reported cases.

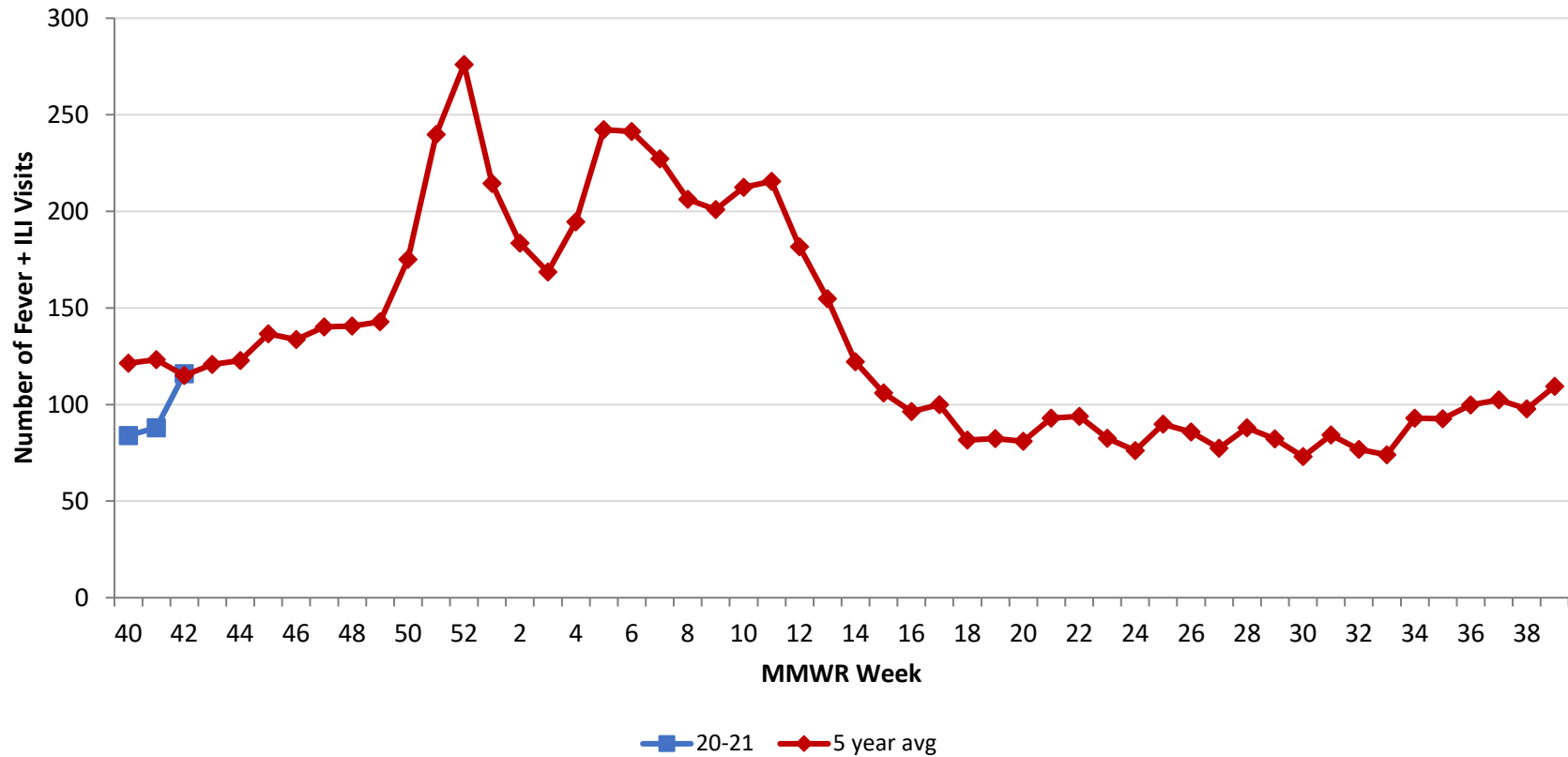
\*\*\*Presumed recovered is defined as cases with a symptom onset date >21 days prior who are not deceased.

†Current Case Rate – current cases (symptom onset past 21 days) per 100,000.

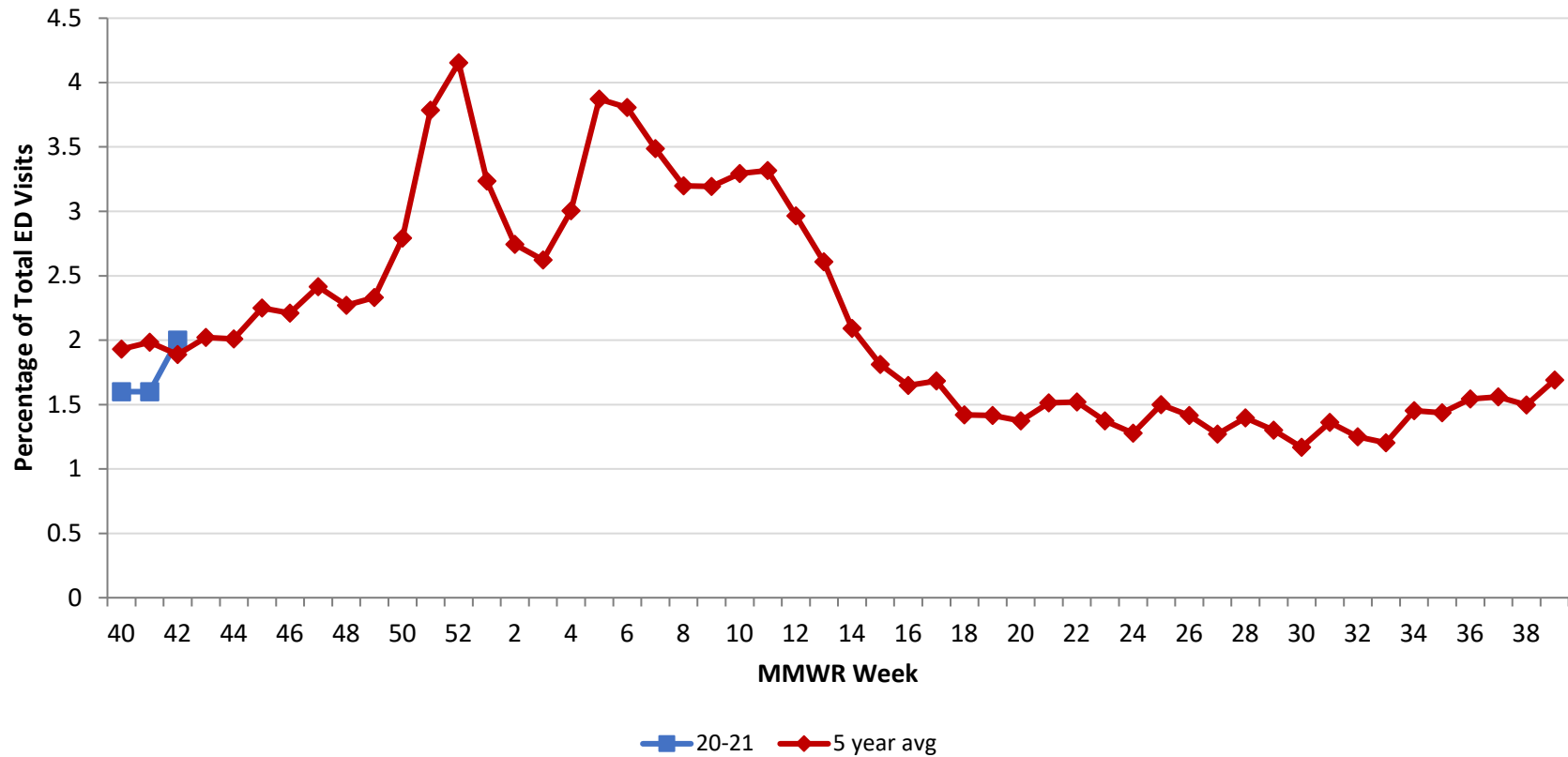
Source: EpiCenter Syndromic Surveillance, Health Monitoring Systems



Montgomery County Fever + ILI Specified ED Visits by MMWR Week with 5-Year Baseline Average; 2020-2021



**Montgomery County Fever + ILI Specified ED Visits (% of Total Visits) by MMWR Week with 5-Year Baseline Average; 2020-2021**



# Total Visits		
MMWR Week	20-21	5-Year Average
40	5,397	6,293.0
41	5,586	6,213.8
42	5,664	6,091.6
43		5,980.2
44		6,109.2
45		6,072.2
46		6,047.6
47		5,804.2
48		6,191.8
49		6,125.0
50		6,274.6
51		6,335.0
52		6,644.2
1		6,628.0
2		6,689.2
3		6,427.5
4		6,476.0
5		6,257.4
6		6,340.2
7		6,516.2
8		6,447.2
9		6,294.6
10		6,448.6
11		6,500.6
12		6,126.4
13		5,935.4
14		5,844.6
15		5,853.0
16		5,850.4
17		5,942.4
18		5,744.0
19		5,820.6
20		5,902.8
21		6,142.4
22		6,166.6
23		6,020.4

# Fever + ILI Visits		
MMWR Week	20-21	5-Year Average
40	84	121.4
41	88	123.2
42	116	115.0
43		120.8
44		122.8
45		136.6
46		133.6
47		140.2
48		140.6
49		142.8
50		175.2
51		239.8
52		276.0
1		214.4
2		183.6
3		168.6
4		194.6
5		242.2
6		241.4
7		227.2
8		206.2
9		201.0
10		212.4
11		215.6
12		181.6
13		154.8
14		122.2
15		106.0
16		96.4
17		100.0
18		81.6
19		82.4
20		81.0
21		93.0
22		93.8
23		82.6

% Fever + ILI Visits		
MMWR Week	20-21	5-Year Average
40	1.6	1.9
41	1.6	2.0
42	2.0	1.9
43		2.0
44		2.0
45		2.2
46		2.2
47		2.4
48		2.3
49		2.3
50		2.8
51		3.8
52		4.2
1		3.2
2		2.7
3		2.6
4		3.0
5		3.9
6		3.8
7		3.5
8		3.2
9		3.2
10		3.3
11		3.3
12		3.0
13		2.6
14		2.1
15		1.8
16		1.6
17		1.7
18		1.4
19		1.4
20		1.4
21		1.5
22		1.5
23		1.4