



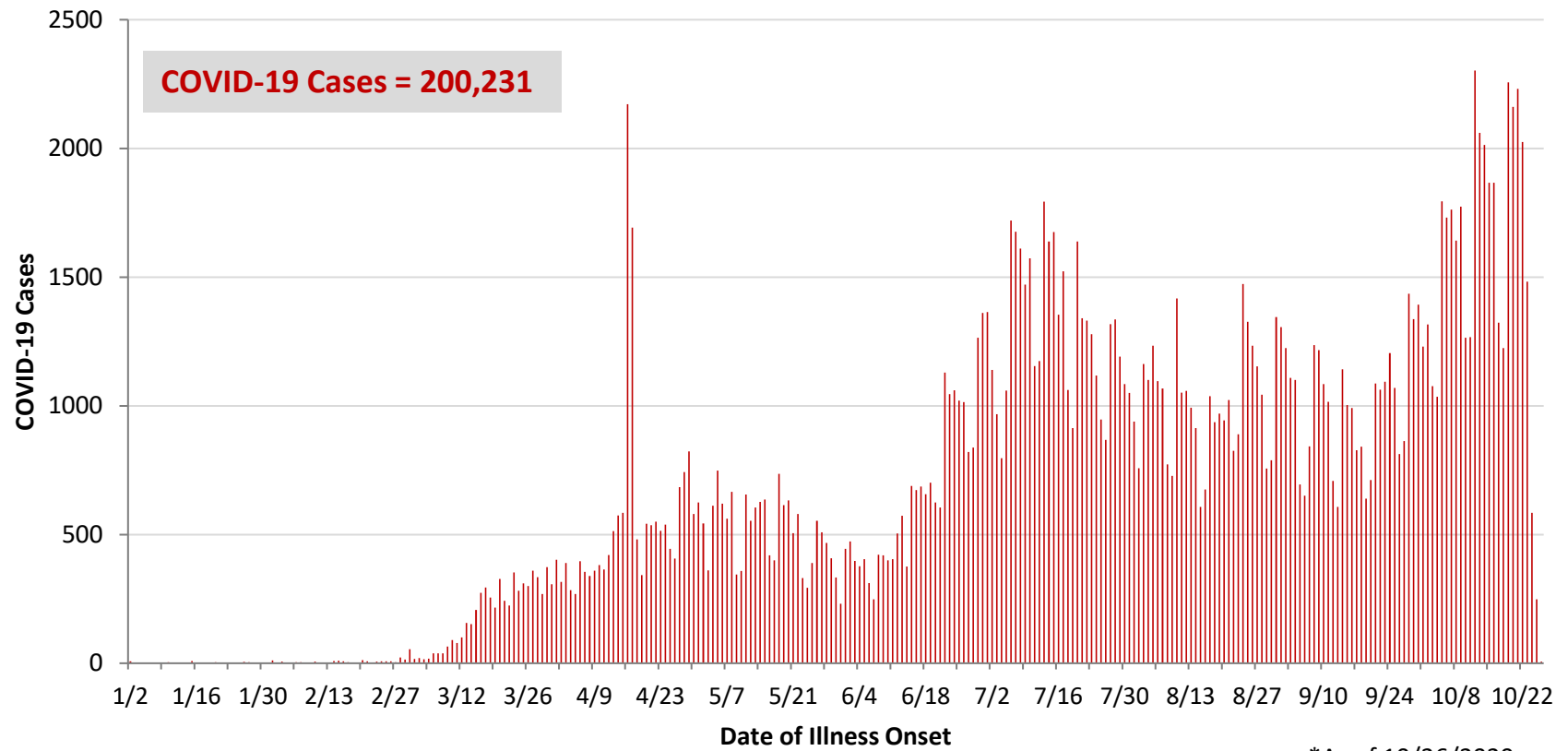
**Ohio, West Central Ohio (WCO), and Montgomery County COVID-19 Cases
As of 10/26/20**

Source: The State of Ohio COVID-19 Dashboard, Ohio Department of Health

Ohio:

Preliminary COVID-19 Cases Ohio, As of 10/26/2020		
Sex	# Cases	% Cases
Female	104,942	52%
Male	93,734	47%
Unknown	1,555	1%
Total	200,231	100%
Age Group		
Age Group	# Cases	% Cases
0-19	25,000	12%
20-29	41,728	21%
30-39	29,539	15%
40-49	26,934	13%
50-59	28,738	14%
60-69	21,932	11%
70-79	14,045	7%
80+	12,150	6%
Unknown	165	0%
Total	200,231	100%
Hospitalized		
Hospitalized	18,235	9.1%
Deaths		
Deaths	5,217	2.6%
Age Group		
Age Group	Deaths	% of Deaths
0-19	2	0%
20-29	13	0%
30-39	37	1%
40-49	86	2%
50-59	295	6%
60-69	716	14%
70-79	1,321	25%
80+	2,747	53%
Total	5,217	100%

**PRELIMINARY COVID-19 Cases by Date of Illness Onset
Ohio, 1/2/20 - 10/26/20***

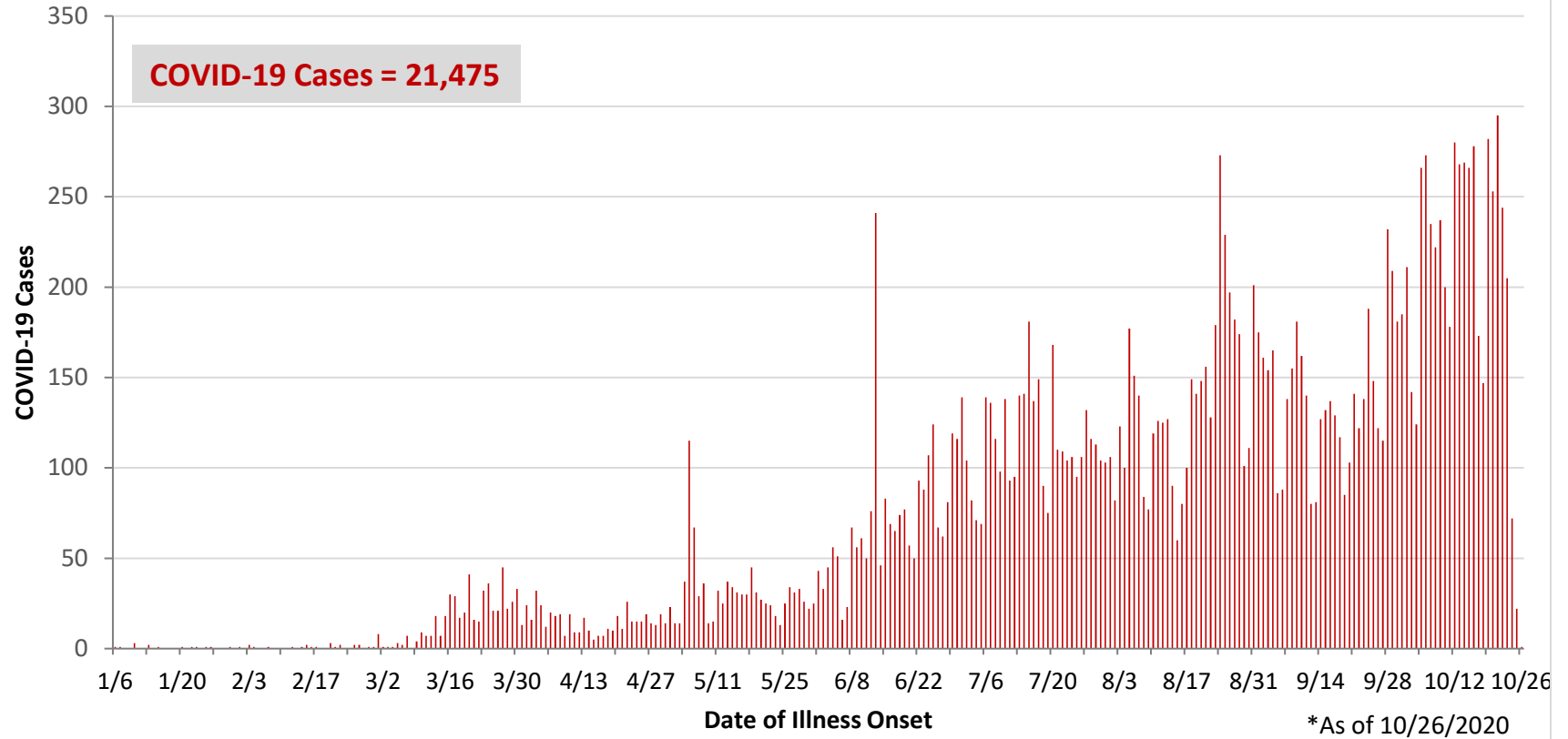


*As of 10/26/2020

WCO:

Preliminary COVID-19 Cases West Central Ohio, As of 10/26/2020		
County	# Cases	% Cases
Champaign	423	2%
Clark	2,631	12%
Darke	1,190	6%
Greene	2,499	12%
Miami	2,132	10%
Montgomery	10,959	51%
Preble	677	3%
Shelby	964	4%
Total	21,475	100%
Sex		
Sex	# Cases	% Cases
Female	11,823	55%
Male	9,362	44%
Unknown	290	1%
Total	21,475	100%
Age Group		
Age Group	# Cases	% Cases
0-19	2,926	14%
20-29	4,274	20%
30-39	2,906	14%
40-49	2,685	13%
50-59	3,057	14%
60-69	2,476	12%
70-79	1,741	8%
80+	1,410	7%
Total	21,475	100%
Hospitalized	2,024	9.4%
Deaths	433	2.0%
Age Group		
Age Group	Deaths	% of Deaths
0-19	1	0%
20-29	3	1%
30-39	5	1%
40-49	9	2%
50-59	22	5%
60-69	60	14%
70-79	98	23%
80+	235	54%
Total	433	100%

**PRELIMINARY COVID-19 Cases by Date of Illness Onset
West Central Ohio, 1/6/20 - 10/26/20***



Montgomery County:

Preliminary COVID-19 Cases Montgomery County, As of 10/26/2020		
Sex	# Cases	% Cases
Female	6,102	56%
Male	4,782	44%
Unknown	75	1%
Total	10,959	100%
Age Group		
Age Group	# Cases	% Cases
0-19	1,684	15%
20-29	2,394	22%
30-39	1,496	14%
40-49	1,353	12%
50-59	1,486	14%
60-69	1,167	11%
70-79	779	7%
80+	598	5%
Unknown	2	0%
Total	10,959	100%
Hospitalized		
Hospitalized	1,203	11.0%
Deaths		
Deaths	190	1.7%
Age Group		
Age Group	Deaths	% of Deaths
0-19	1	1%
20-29	3	2%
30-39	3	2%
40-49	7	4%
50-59	14	7%
60-69	32	17%
70-79	47	25%
80+	83	44%
Total	190	100%

Age Group	Hospitalizations	% of Age Group Cases
0-19	37	2.2%
20-29	59	2.5%
30-39	94	6.3%
40-49	123	9.1%
50-59	203	13.7%
60-69	241	20.7%
70-79	262	33.6%
80+	184	30.8%
Total	1,203	11.0%

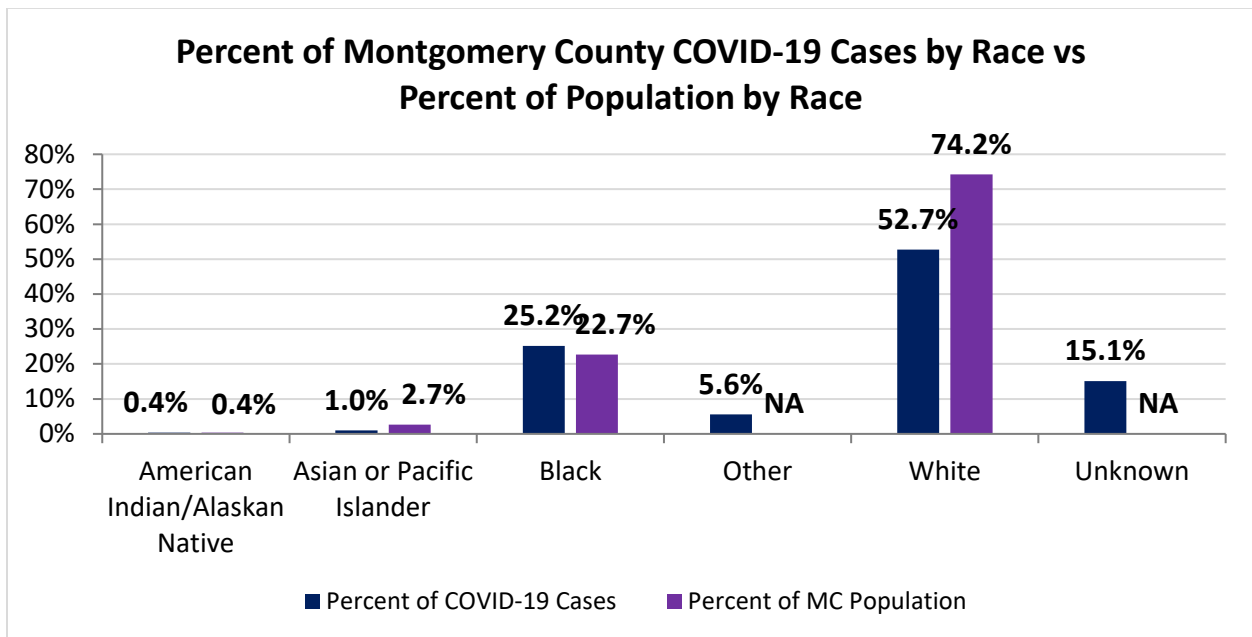
Source: Ohio Disease Reporting System, ODH

Note. All rates are per 100,000 population.

Montgomery County COVID-19 Cases by Race As of 10/26/20				
Race	Total Cases	Case Rate	Current Cases*	Current Case Rate*
American Indian/Alaskan Native (AI/AN)*	38	1,776.5	4	187.0
Asian	112	794.4	17	120.6
Black	2,706	2,238.0	284	234.9
Other	597	NA	140	NA
White	5,658	1,434.1	1140	288.9
Unknown	1,622	NA	421	NA
Total	10,733	2,018.7	2,006	377.3

*Note. AI/ANs account for 0.4% of Montgomery County's population, and therefore, rates for this population will be large and may be misleading.

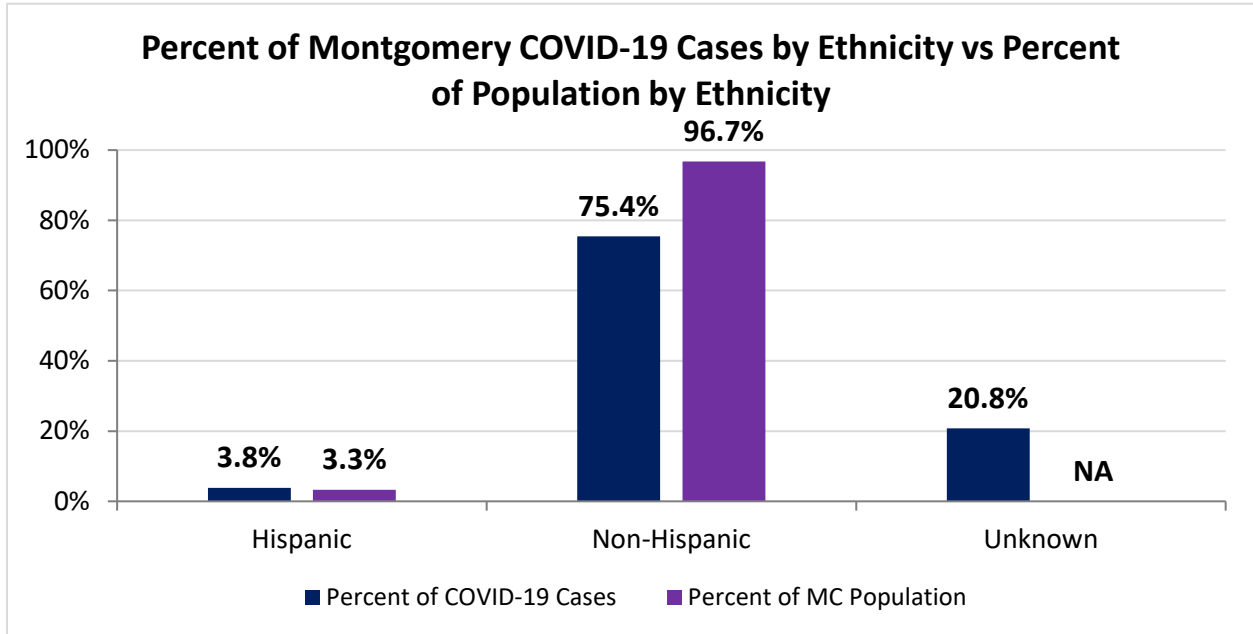
*Current Cases – cases with symptom onset in the past 21 days. Current Case Rate – current cases per 100,000



Montgomery County COVID-19 Deaths by Race as of 10/26/2020		
Race	Count	Death Rate
American Indian/Alaskan Native	3	140.3
Asian or Pacific Islander	4	28.4
Black	68	56.2
Other	2	NA
White	114	28.9
Unknown	0	NA
Total	191	35.9

Montgomery County COVID-19 Cases by Ethnicity As of 10/26/20				
Ethnicity	Total Cases	Case Rate	Current Cases*	Current Case Rate*
Hispanic	411	2,371.9	63	363.6
Non-Hispanic	8,094	1,573.6	1392	270.6
Unknown	2,228	NA	551	NA
Total	10,733	2,018.7	2,006	377.3

*Current Cases – cases with symptom onset in the past 21 days. Current Case Rate – current cases per 100,000



Montgomery County COVID-19 Cases by Health Care Worker Status As of 10/26/20		
Status	#	%
Health Care Worker	1,017	9.5%
Non-Health Care Worker	6,267	58.4%
Unknown	3,449	32.1%
Total	10,733	100%

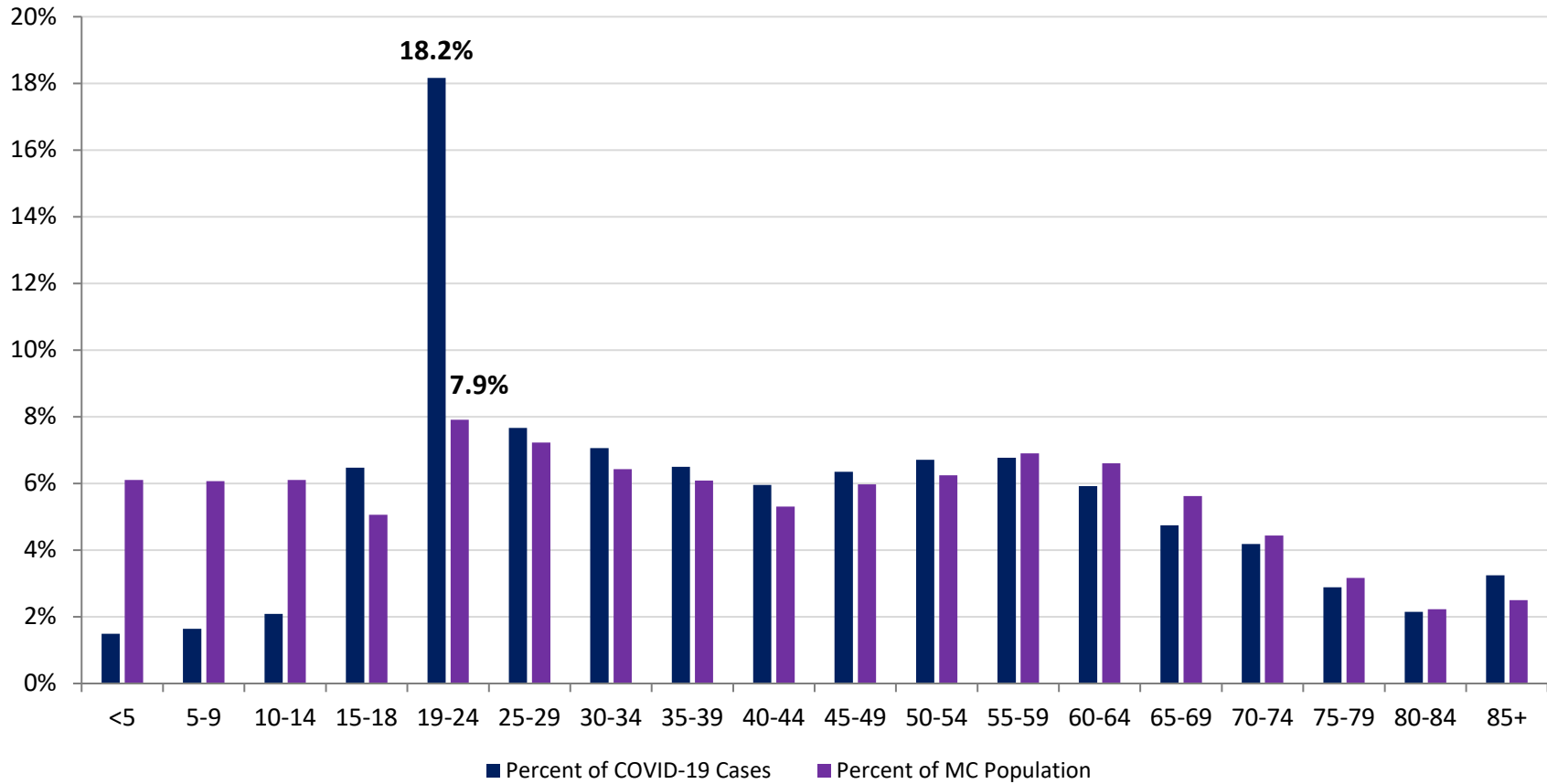
Montgomery County COVID-19 Cases Age Range As of 10/26/20	
Stat	Age in Years
Age Range	<1 - 104
Average Age	41.6
Median Age	39.0

Montgomery County COVID-19 Cases by Age Group As of 10/26/20					
Age Group	Total Cases	Total Case Rate	Current Cases*	Current Case Rate*	Current Trend*
<5	160	490.5	22	67.4	
5-9	176	546.8	31	96.3	
10-14	224	697.9	39	121.5	
15-18	695	2,631.3	116	439.2	
19-24	1949	4,630.6	210	498.9	
25-29	823	2,145.7	160	417.2	
30-34	758	2,168.1	164	469.1	
35-39	697	2,159.2	138	427.5	
40-44	639	2,223.6	136	473.3	
45-49	681	2,222.7	139	453.7	
50-54	720	2,230.1	185	573.0	
55-59	727	2,006.4	161	444.3	
60-64	635	1,796.2	139	393.2	
65-69	509	1,684.3	106	350.7	
70-74	449	1,820.3	80	324.3	
75-79	310	1,803.4	64	372.3	
80-84	231	1,928.4	40	333.9	
85+	348	2,601.5	75	560.7	
Total	10,731	2,018.3	2,005	377.1	

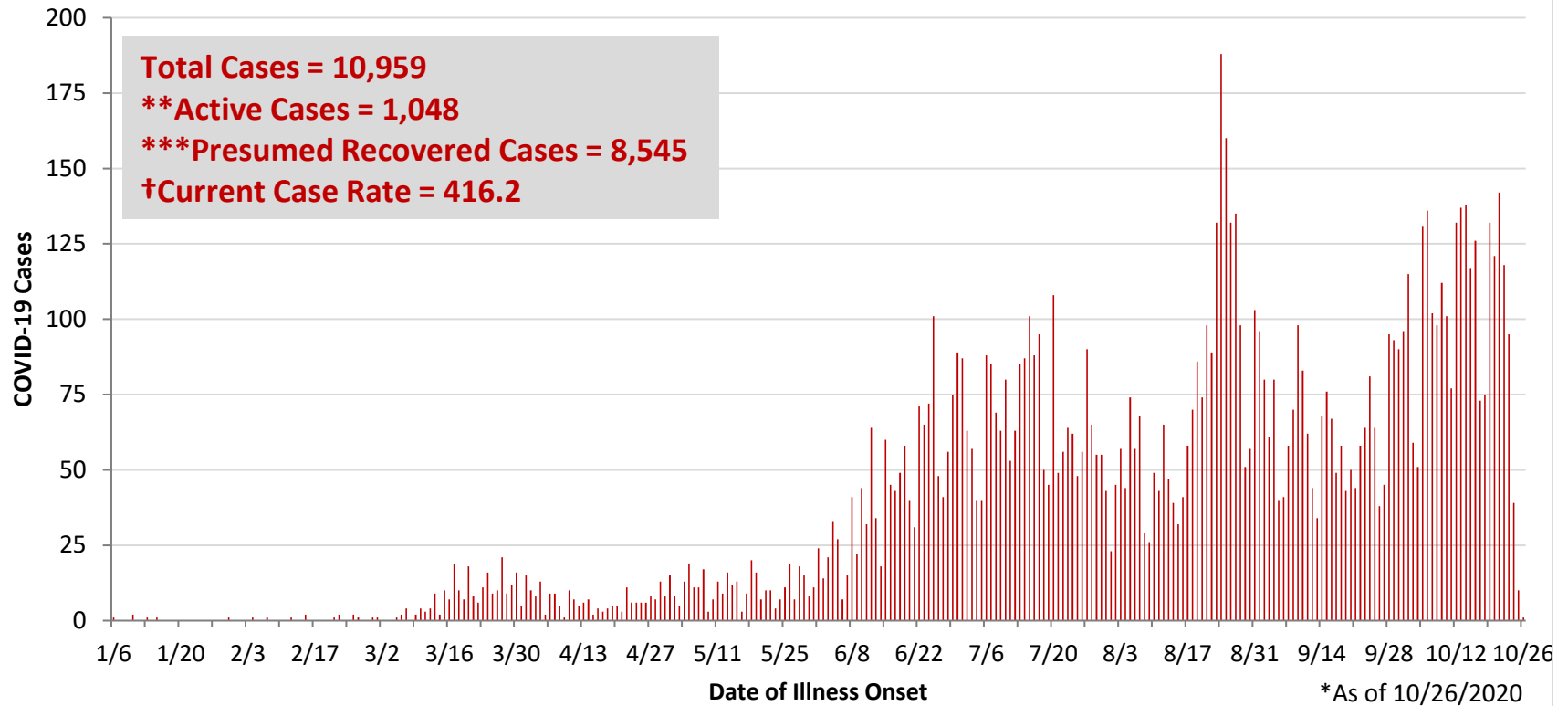
*Current Cases – cases with symptom onset in the past 21 days. Current Trend – compares current cases to current cases from 14 days ago. Current Case Rate – current cases per 100,000.

Current Trend	Interpretation
	Decrease in Cases
	No Change in Cases
	Increase in Cases

Percent of Montgomery County COVID-19 Cases by Age Group vs Percent of Population by Age Group



**PRELIMINARY COVID-19 Cases by Date of Illness Onset
Montgomery County, 1/6/20 - 10/26/20***

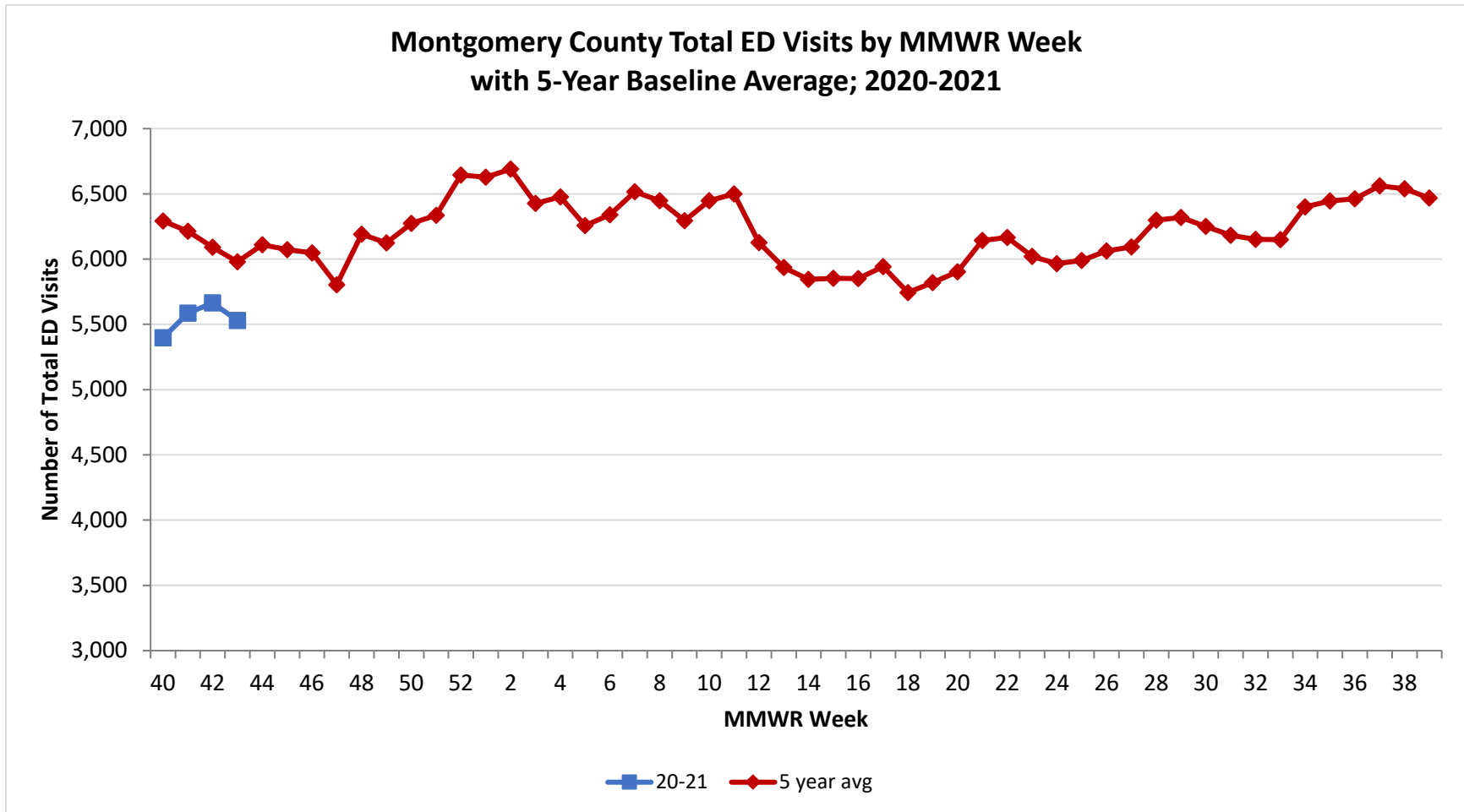


**Active cases are based on the reported illness onset date (using a 10-day window) of reported cases.

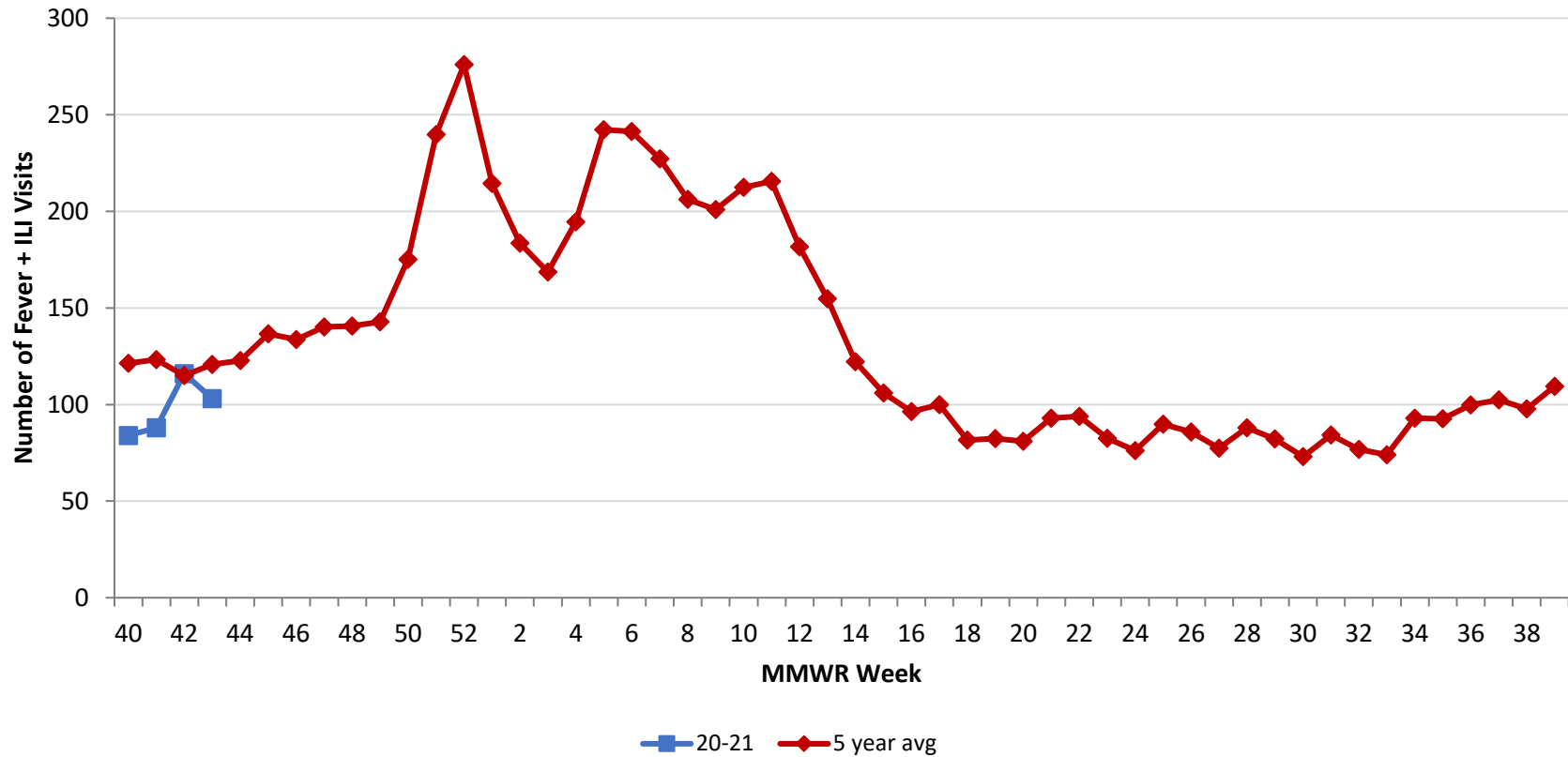
***Presumed recovered is defined as cases with a symptom onset date >21 days prior who are not deceased.

†Current Case Rate – current cases (symptom onset past 21 days) per 100,000.

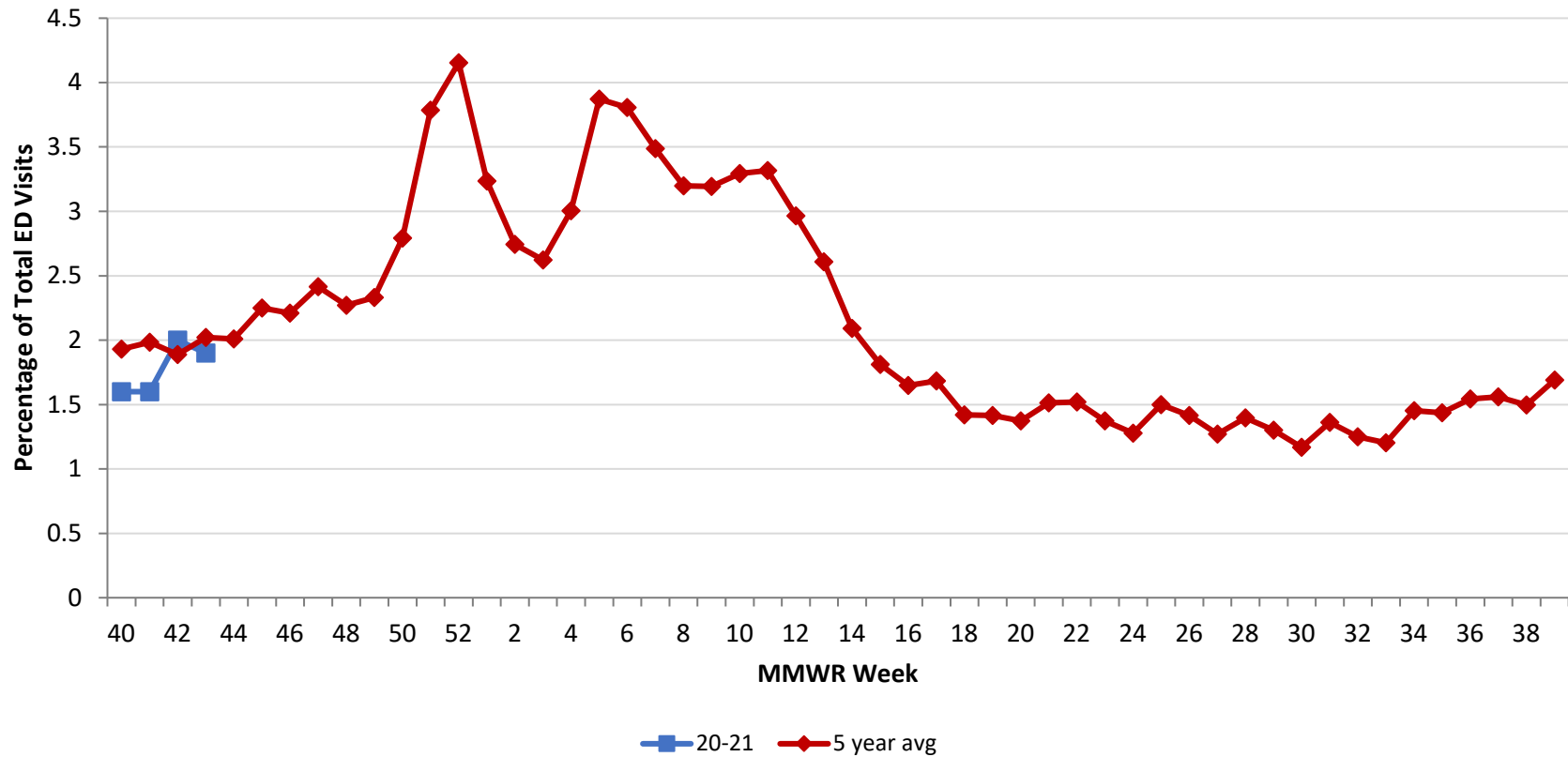
Source: EpiCenter Syndromic Surveillance, Health Monitoring Systems



**Montgomery County Fever + ILI Specified ED Visits by MMWR Week
with 5-Year Baseline Average; 2020-2021**



Montgomery County Fever + ILI Specified ED Visits (% of Total Visits) by MMWR Week with 5-Year Baseline Average; 2020-2021



# Total Visits		
MMWR Week	20-21	5-Year Average
40	5,397	6,293.0
41	5,586	6,213.8
42	5,664	6,091.6
43		5,980.2
44		6,109.2
45		6,072.2
46		6,047.6
47		5,804.2
48		6,191.8
49		6,125.0
50		6,274.6
51		6,335.0
52		6,644.2
1		6,628.0
2		6,689.2
3		6,427.5
4		6,476.0
5		6,257.4
6		6,340.2
7		6,516.2
8		6,447.2
9		6,294.6
10		6,448.6
11		6,500.6
12		6,126.4
13		5,935.4
14		5,844.6
15		5,853.0
16		5,850.4
17		5,942.4
18		5,744.0
19		5,820.6
20		5,902.8
21		6,142.4
22		6,166.6
23		6,020.4

# Fever + ILI Visits		
MMWR Week	20-21	5-Year Average
40	84	121.4
41	88	123.2
42	116	115.0
43		120.8
44		122.8
45		136.6
46		133.6
47		140.2
48		140.6
49		142.8
50		175.2
51		239.8
52		276.0
1		214.4
2		183.6
3		168.6
4		194.6
5		242.2
6		241.4
7		227.2
8		206.2
9		201.0
10		212.4
11		215.6
12		181.6
13		154.8
14		122.2
15		106.0
16		96.4
17		100.0
18		81.6
19		82.4
20		81.0
21		93.0
22		93.8
23		82.6

% Fever + ILI Visits		
MMWR Week	20-21	5-Year Average
40	1.6	1.9
41	1.6	2.0
42	2.0	1.9
43		2.0
44		2.0
45		2.2
46		2.2
47		2.4
48		2.3
49		2.3
50		2.8
51		3.8
52		4.2
1		3.2
2		2.7
3		2.6
4		3.0
5		3.9
6		3.8
7		3.5
8		3.2
9		3.2
10		3.3
11		3.3
12		3.0
13		2.6
14		2.1
15		1.8
16		1.6
17		1.7
18		1.4
19		1.4
20		1.4
21		1.5
22		1.5
23		1.4