



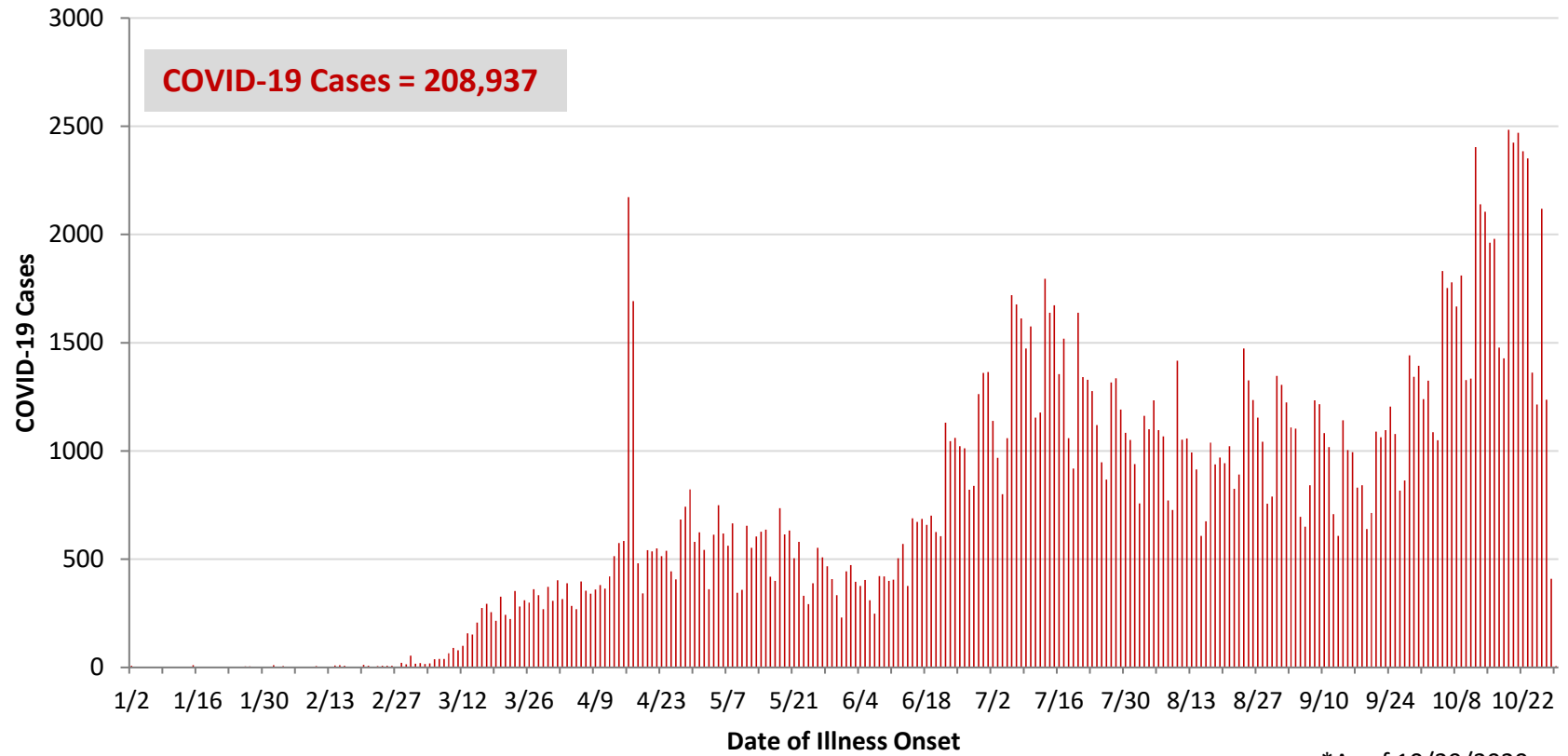
**Ohio, West Central Ohio (WCO), and Montgomery County COVID-19 Cases
As of 10/29/20**

Source: The State of Ohio COVID-19 Dashboard, Ohio Department of Health

Ohio:

Preliminary COVID-19 Cases Ohio, As of 10/29/2020		
Sex	# Cases	% Cases
Female	109,509	52%
Male	97,809	47%
Unknown	1,619	1%
Total	208,937	100%
Age Group		
Age Group	# Cases	% Cases
0-19	25,921	12%
20-29	43,261	21%
30-39	30,833	15%
40-49	28,218	14%
50-59	30,230	14%
60-69	22,988	11%
70-79	14,713	7%
80+	12,603	6%
Unknown	170	0%
Total	208,937	100%
Hospitalized		
Hospitalized	18,800	9.0%
Deaths		
Deaths	5,275	2.5%
Age Group		
Age Group	Deaths	% of Deaths
0-19	2	0%
20-29	13	0%
30-39	38	1%
40-49	86	2%
50-59	296	6%
60-69	724	14%
70-79	1,340	25%
80+	2,776	53%
Total	5,275	100%

**PRELIMINARY COVID-19 Cases by Date of Illness Onset
Ohio, 1/2/20 - 10/29/20***

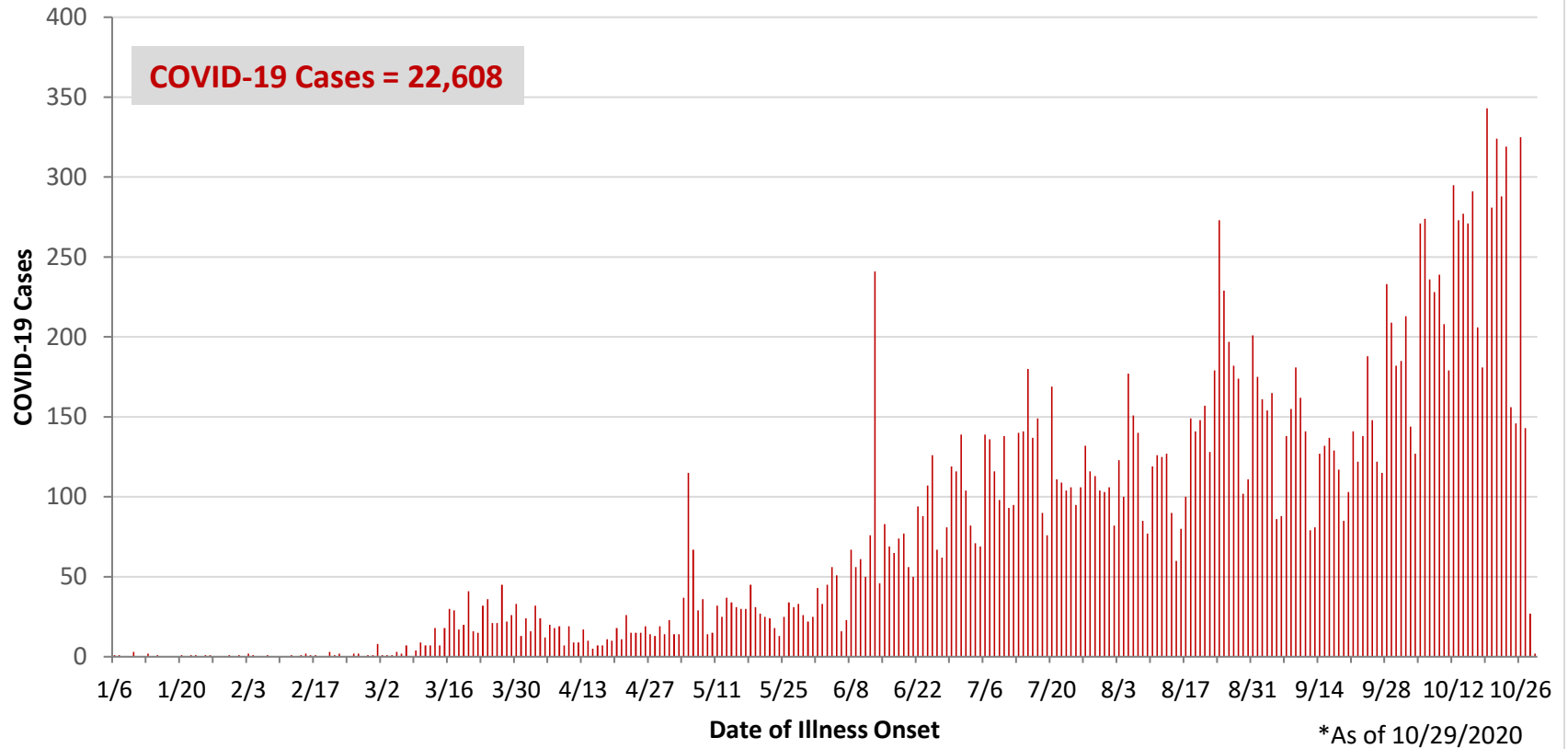


*As of 10/29/2020

WCO:

Preliminary COVID-19 Cases West Central Ohio, As of 10/29/2020		
County	# Cases	% Cases
Champaign	452	2%
Clark	2,766	12%
Darke	1,264	6%
Greene	2,654	12%
Miami	2,239	10%
Montgomery	11,494	51%
Preble	721	3%
Shelby	1,018	5%
Total	22,608	100%
Sex		
Sex	# Cases	% Cases
Female	12,437	55%
Male	9,880	44%
Unknown	291	1%
Total	22,608	100%
Age Group		
Age Group	# Cases	% Cases
0-19	3,042	13%
20-29	4,424	20%
30-39	3,065	14%
40-49	2,851	13%
50-59	3,273	14%
60-69	2,614	12%
70-79	1,857	8%
80+	1,482	7%
Total	22,608	100%
Hospitalized	2,127	9.4%
Deaths	434	1.9%
Age Group		
Age Group	Deaths	% of Deaths
0-19	1	0%
20-29	3	1%
30-39	5	1%
40-49	9	2%
50-59	22	5%
60-69	60	14%
70-79	99	23%
80+	235	54%
Total	434	100%

**PRELIMINARY COVID-19 Cases by Date of Illness Onset
West Central Ohio, 1/6/20 - 10/29/20***



Montgomery County:

Preliminary COVID-19 Cases Montgomery County, As of 10/29/2020		
Sex	# Cases	% Cases
Female	6,400	56%
Male	5,015	44%
Unknown	79	1%
Total	11,494	100%
Age Group		
Age Group	# Cases	% Cases
0-19	1,736	15%
20-29	2,473	22%
30-39	1,583	14%
40-49	1,428	12%
50-59	1,580	14%
60-69	1,222	11%
70-79	837	7%
80+	633	6%
Unknown	2	0%
Total	11,494	100%
Hospitalized	1,269	11.0%
Deaths	190	1.7%
Age Group	Deaths	% of Deaths
0-19	1	1%
20-29	3	2%
30-39	3	2%
40-49	7	4%
50-59	14	7%
60-69	32	17%
70-79	47	25%
80+	83	44%
Total	190	100%

Age Group	Hospitalizations	% of Age Group Cases
0-19	38	2.2%
20-29	60	2.4%
30-39	100	6.3%
40-49	127	8.9%
50-59	212	13.4%
60-69	252	20.6%
70-79	280	33.5%
80+	200	31.6%
Total	1,269	11.0%

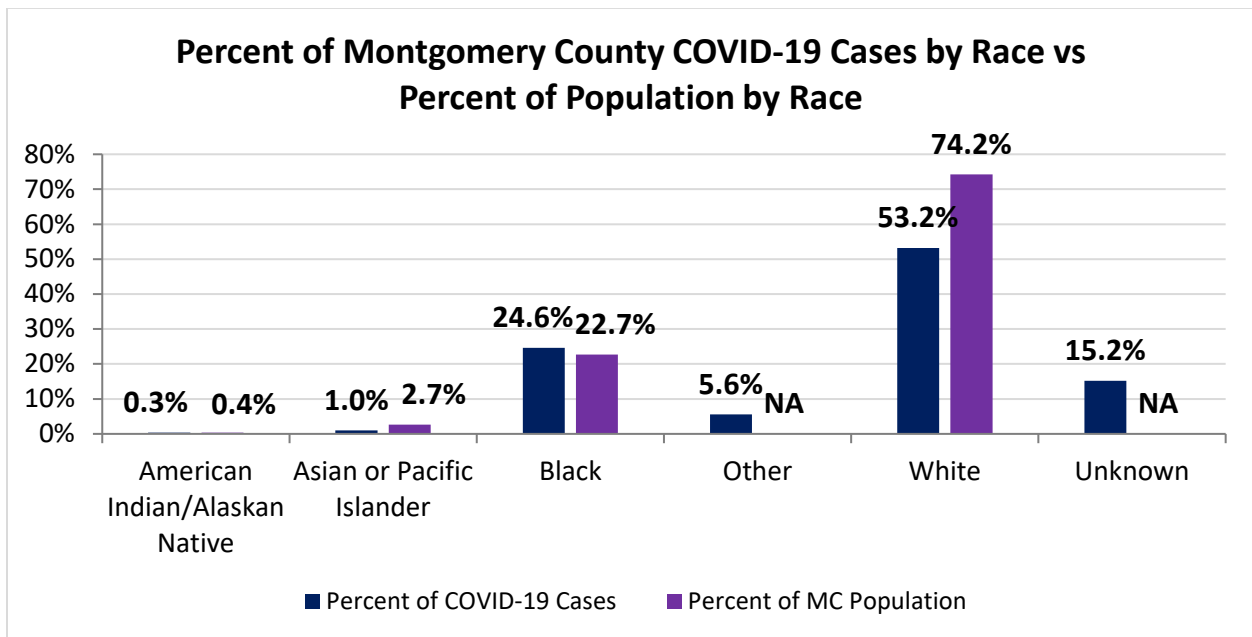
Source: Ohio Disease Reporting System, ODH

Note. All rates are per 100,000 population.

Montgomery County COVID-19 Cases by Race As of 10/29/20				
Race	Total Cases	Case Rate	Current Cases*	Current Case Rate*
American Indian/Alaskan Native (AI/AN)*	39	1,823.3	5	233.8
Asian	117	829.9	19	134.8
Black	2,796	2,312.5	326	269.6
Other	631	NA	141	NA
White	6,037	1,530.1	1247	316.1
Unknown	1,727	NA	506	NA
Total	11,347	2,134.2	2,244	422.1

*Note. AI/ANs account for 0.4% of Montgomery County's population, and therefore, rates for this population will be large and may be misleading.

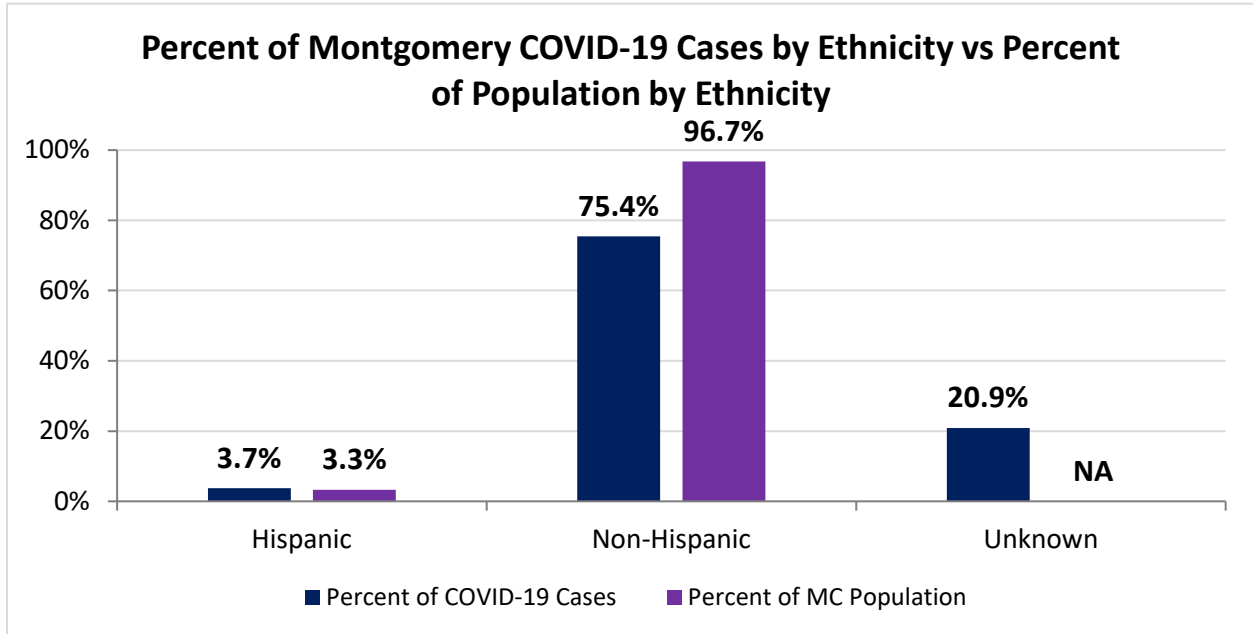
*Current Cases – cases with symptom onset in the past 21 days. Current Case Rate – current cases per 100,000



Montgomery County COVID-19 Deaths by Race as of 10/29/2020		
Race	Count	Death Rate
American Indian/Alaskan Native	3	140.3
Asian or Pacific Islander	4	28.4
Black	68	56.2
Other	2	NA
White	115	29.1
Unknown	0	NA
Total	192	36.1

Montgomery County COVID-19 Cases by Ethnicity As of 10/29/20				
Ethnicity	Total Cases	Case Rate	Current Cases*	Current Case Rate*
Hispanic	421	2,429.6	60	346.3
Non-Hispanic	8,556	1,663.4	1554	302.1
Unknown	2,370	NA	630	NA
Total	11,347	2,134.2	2,244	422.1

*Current Cases – cases with symptom onset in the past 21 days. Current Case Rate – current cases per 100,000



Montgomery County COVID-19 Cases by Health Care Worker Status As of 10/29/20		
Status	#	%
Health Care Worker	1,067	9.4%
Non-Health Care Worker	6,602	58.2%
Unknown	3,678	32.4%
Total	11,347	100%

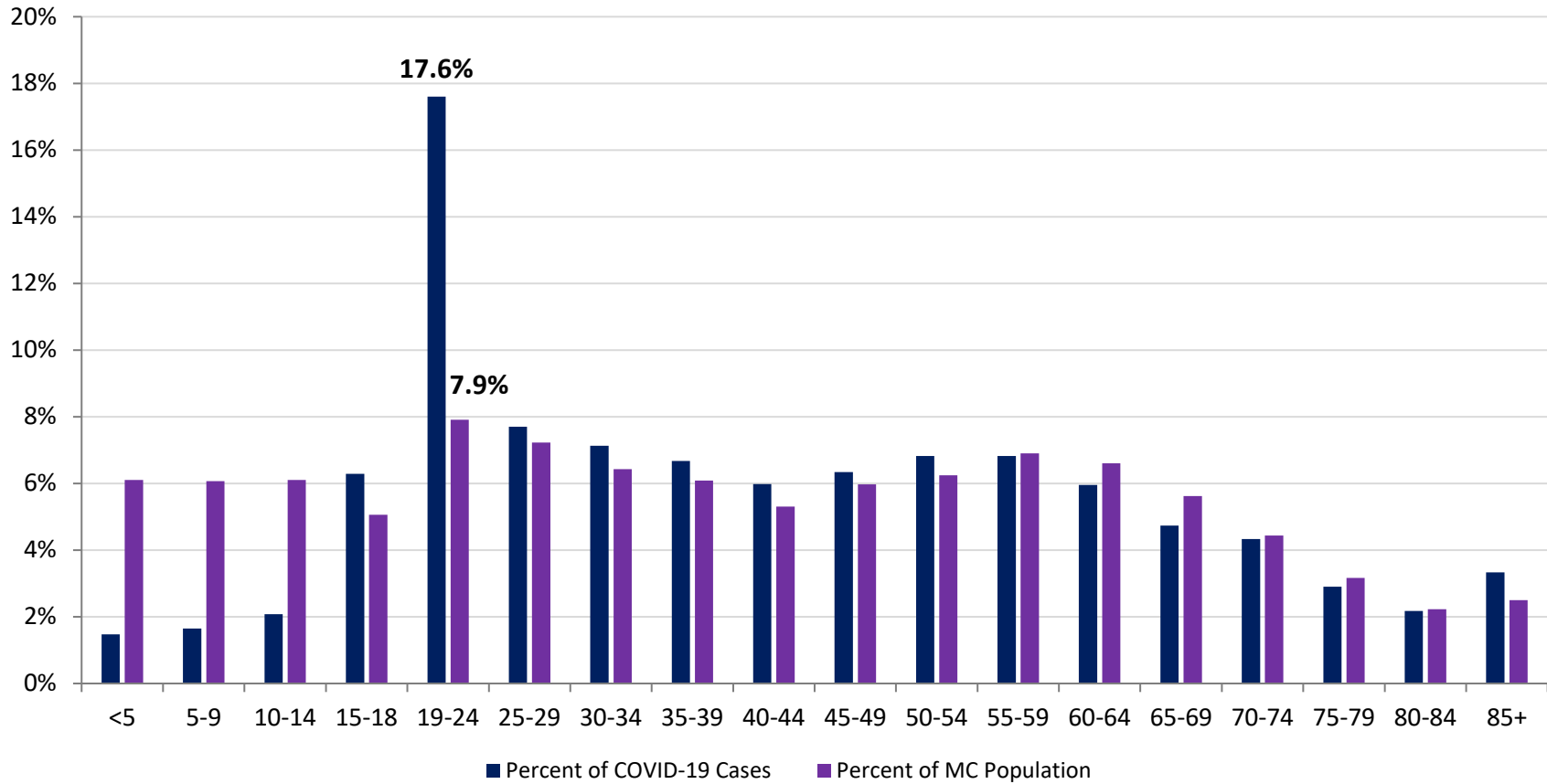
Montgomery County COVID-19 Cases Age Range As of 10/29/20	
Stat	Age in Years
Age Range	<1 - 104
Average Age	41.9
Median Age	39.0

Montgomery County COVID-19 Cases by Age Group As of 10/29/20					
Age Group	Total Cases	Total Case Rate	Current Cases*	Current Case Rate*	Current Trend*
<5	167	511.9	24	73.6	
5-9	187	580.9	37	114.9	
10-14	236	735.3	43	134.0	
15-18	713	2,699.4	99	374.8	
19-24	1997	4,744.6	217	515.6	
25-29	874	2,278.7	187	487.6	
30-34	809	2,314.0	193	552.0	
35-39	757	2,345.0	174	539.0	
40-44	679	2,362.8	153	532.4	
45-49	719	2,346.7	151	492.8	
50-54	774	2,397.4	208	644.3	
55-59	774	2,136.1	173	477.5	
60-64	676	1,912.1	159	449.7	
65-69	537	1,776.9	111	367.3	
70-74	492	1,994.6	110	446.0	
75-79	329	1,913.9	67	389.8	
80-84	247	2,061.9	51	425.7	
85+	378	2,825.7	87	650.4	
Total	11,345	2,133.8	2,244	422.1	

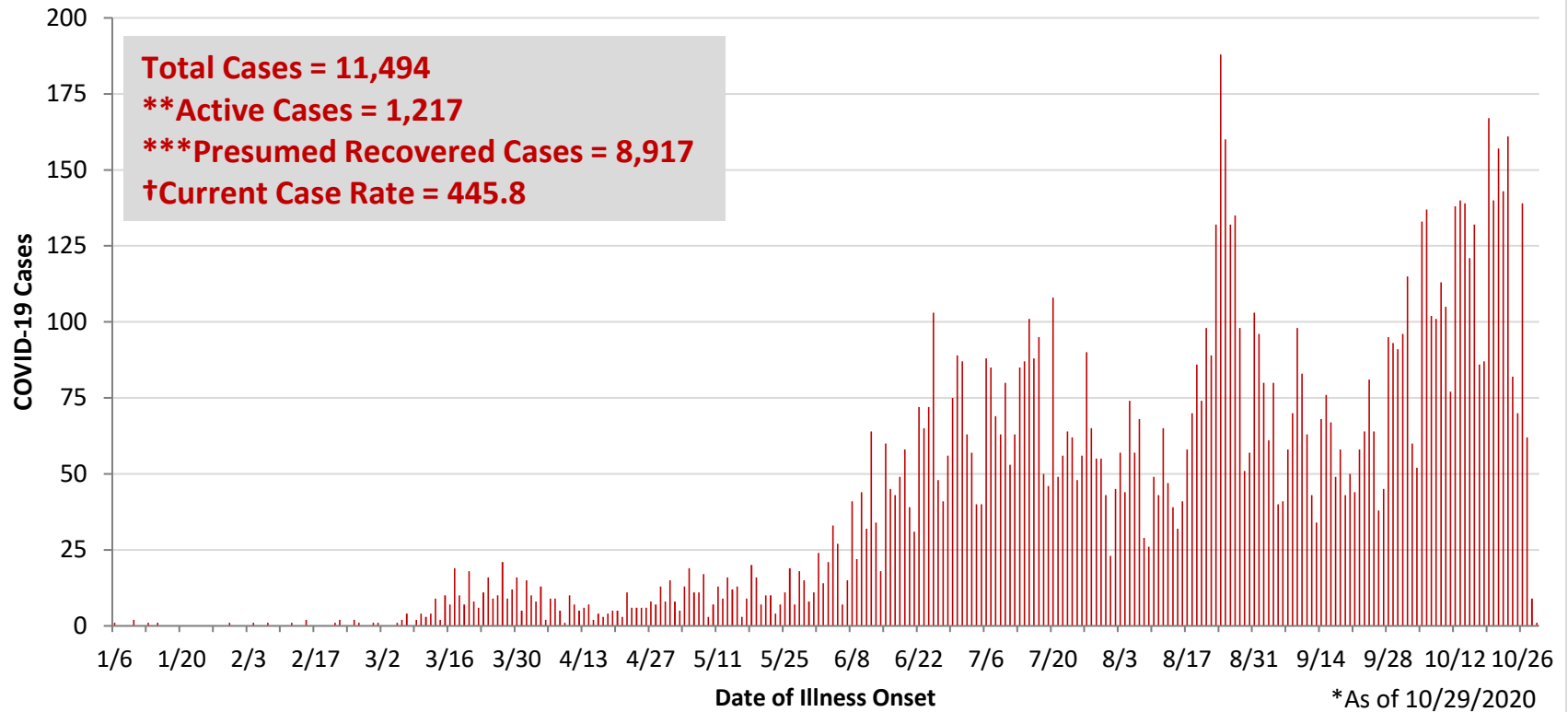
*Current Cases – cases with symptom onset in the past 21 days. Current Trend – compares current cases to current cases from 14 days ago. Current Case Rate – current cases per 100,000.

Current Trend	Interpretation
	Decrease in Cases
	No Change in Cases
	Increase in Cases

Percent of Montgomery County COVID-19 Cases by Age Group vs Percent of Population by Age Group



**PRELIMINARY COVID-19 Cases by Date of Illness Onset
Montgomery County, 1/6/20 - 10/29/20***

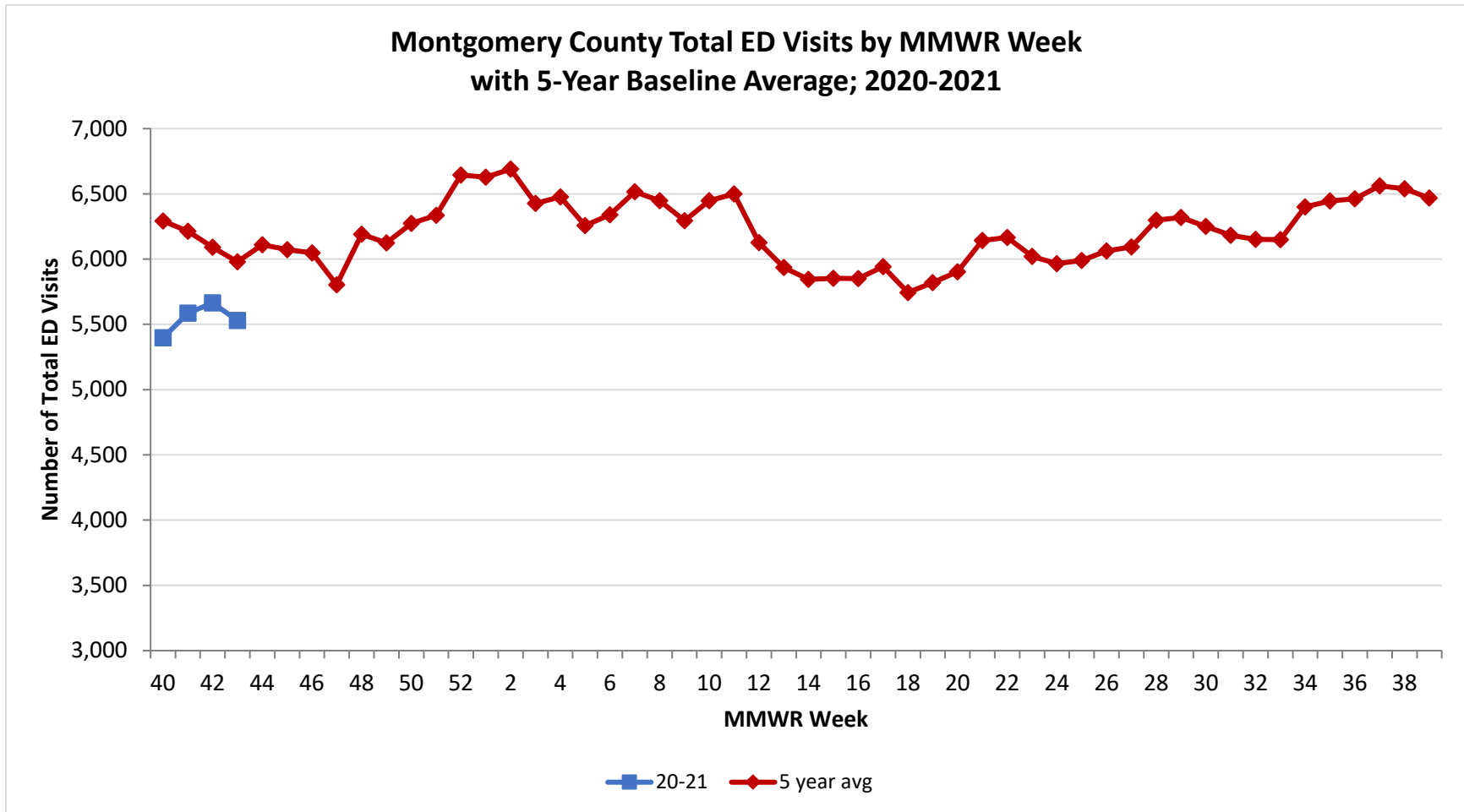


**Active cases are based on the reported illness onset date (using a 10-day window) of reported cases.

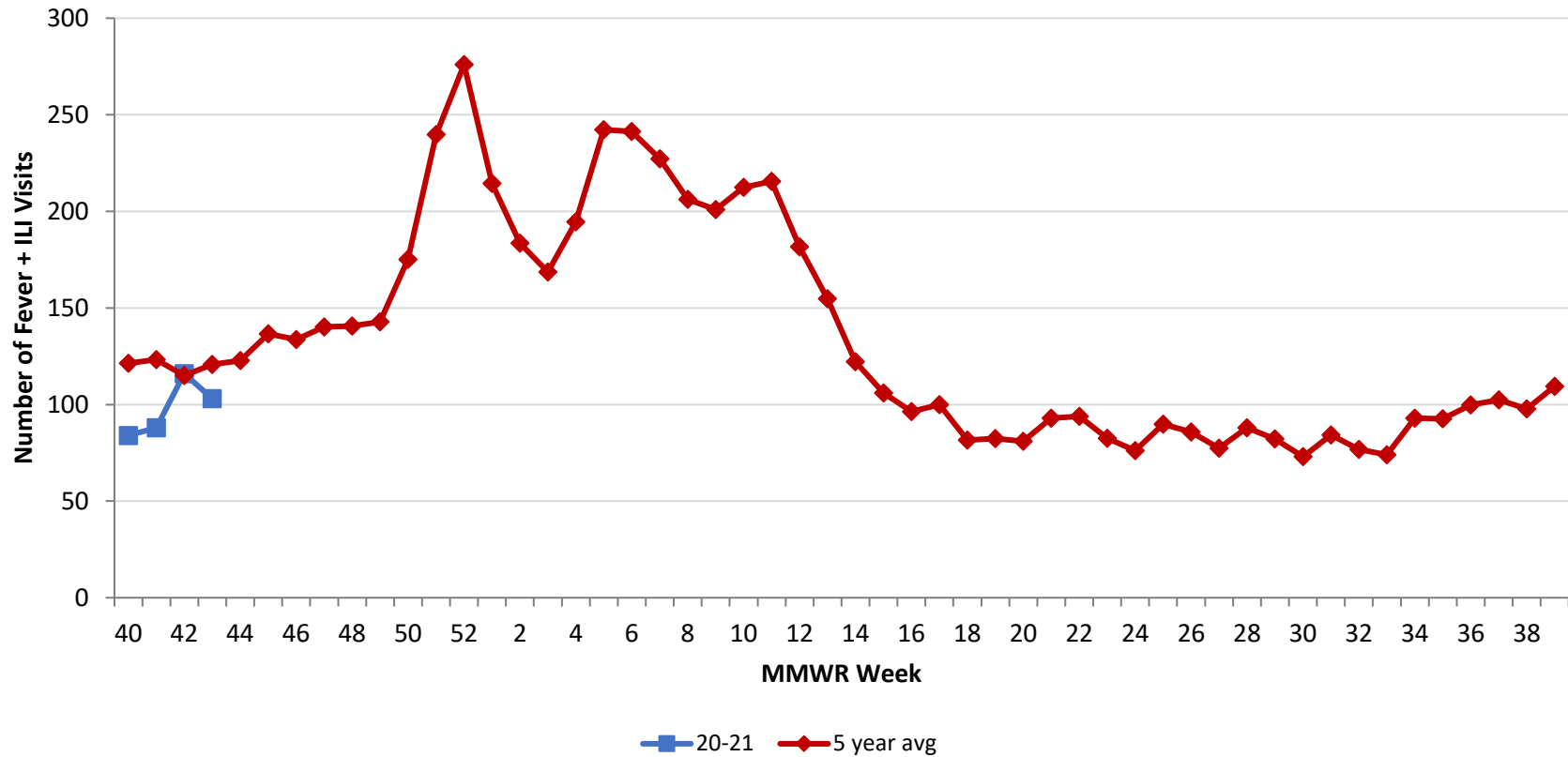
***Presumed recovered is defined as cases with a symptom onset date >21 days prior who are not deceased.

†Current Case Rate – current cases (symptom onset past 21 days) per 100,000.

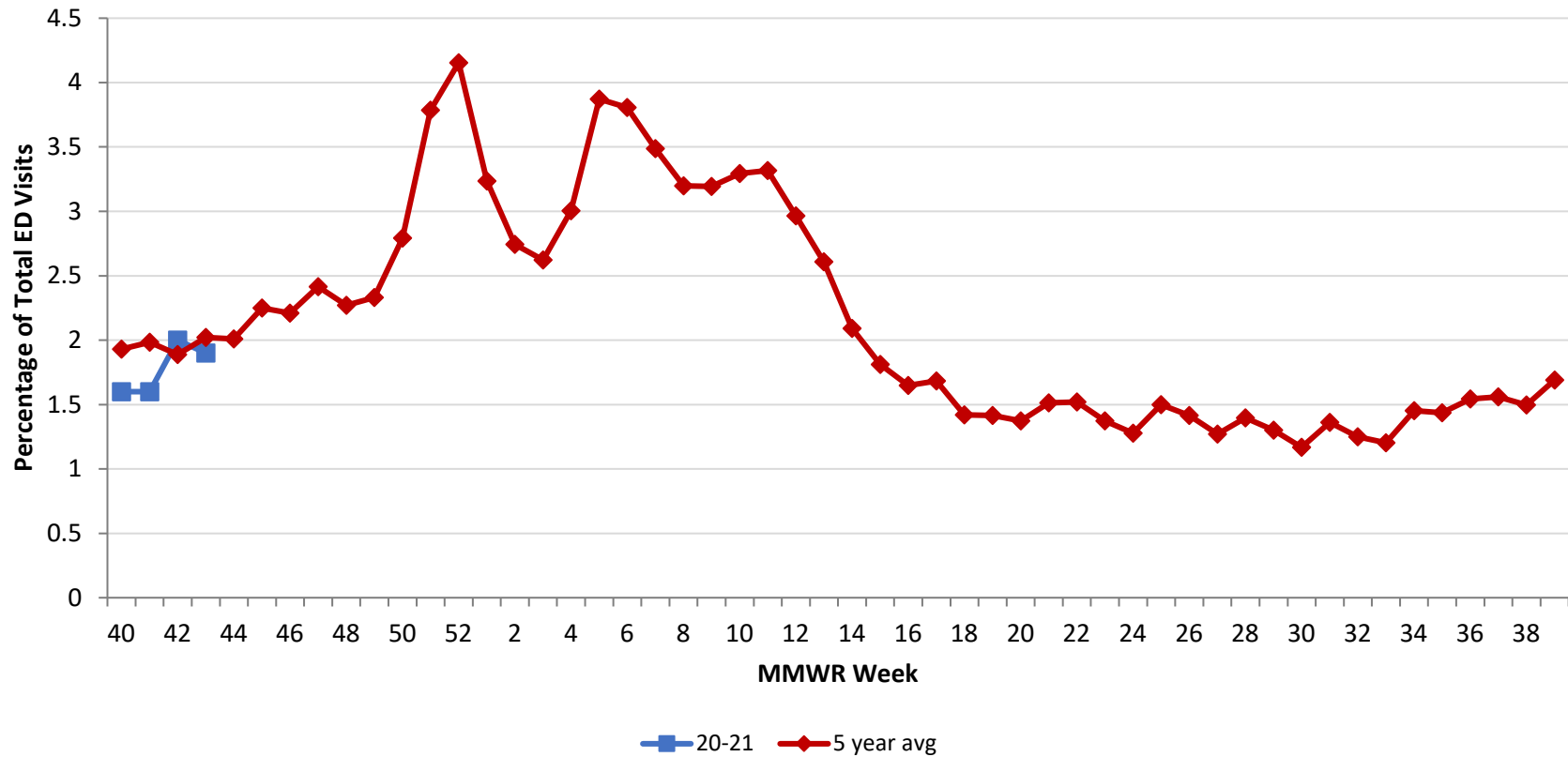
Source: EpiCenter Syndromic Surveillance, Health Monitoring Systems



Montgomery County Fever + ILI Specified ED Visits by MMWR Week
with 5-Year Baseline Average; 2020-2021



Montgomery County Fever + ILI Specified ED Visits (% of Total Visits) by MMWR Week with 5-Year Baseline Average; 2020-2021



# Total Visits		
MMWR Week	20-21	5-Year Average
40	5,397	6,293.0
41	5,586	6,213.8
42	5,664	6,091.6
43		5,980.2
44		6,109.2
45		6,072.2
46		6,047.6
47		5,804.2
48		6,191.8
49		6,125.0
50		6,274.6
51		6,335.0
52		6,644.2
1		6,628.0
2		6,689.2
3		6,427.5
4		6,476.0
5		6,257.4
6		6,340.2
7		6,516.2
8		6,447.2
9		6,294.6
10		6,448.6
11		6,500.6
12		6,126.4
13		5,935.4
14		5,844.6
15		5,853.0
16		5,850.4
17		5,942.4
18		5,744.0
19		5,820.6
20		5,902.8
21		6,142.4
22		6,166.6
23		6,020.4

# Fever + ILI Visits		
MMWR Week	20-21	5-Year Average
40	84	121.4
41	88	123.2
42	116	115.0
43		120.8
44		122.8
45		136.6
46		133.6
47		140.2
48		140.6
49		142.8
50		175.2
51		239.8
52		276.0
1		214.4
2		183.6
3		168.6
4		194.6
5		242.2
6		241.4
7		227.2
8		206.2
9		201.0
10		212.4
11		215.6
12		181.6
13		154.8
14		122.2
15		106.0
16		96.4
17		100.0
18		81.6
19		82.4
20		81.0
21		93.0
22		93.8
23		82.6

% Fever + ILI Visits		
MMWR Week	20-21	5-Year Average
40	1.6	1.9
41	1.6	2.0
42	2.0	1.9
43		2.0
44		2.0
45		2.2
46		2.2
47		2.4
48		2.3
49		2.3
50		2.8
51		3.8
52		4.2
1		3.2
2		2.7
3		2.6
4		3.0
5		3.9
6		3.8
7		3.5
8		3.2
9		3.2
10		3.3
11		3.3
12		3.0
13		2.6
14		2.1
15		1.8
16		1.6
17		1.7
18		1.4
19		1.4
20		1.4
21		1.5
22		1.5
23		1.4