



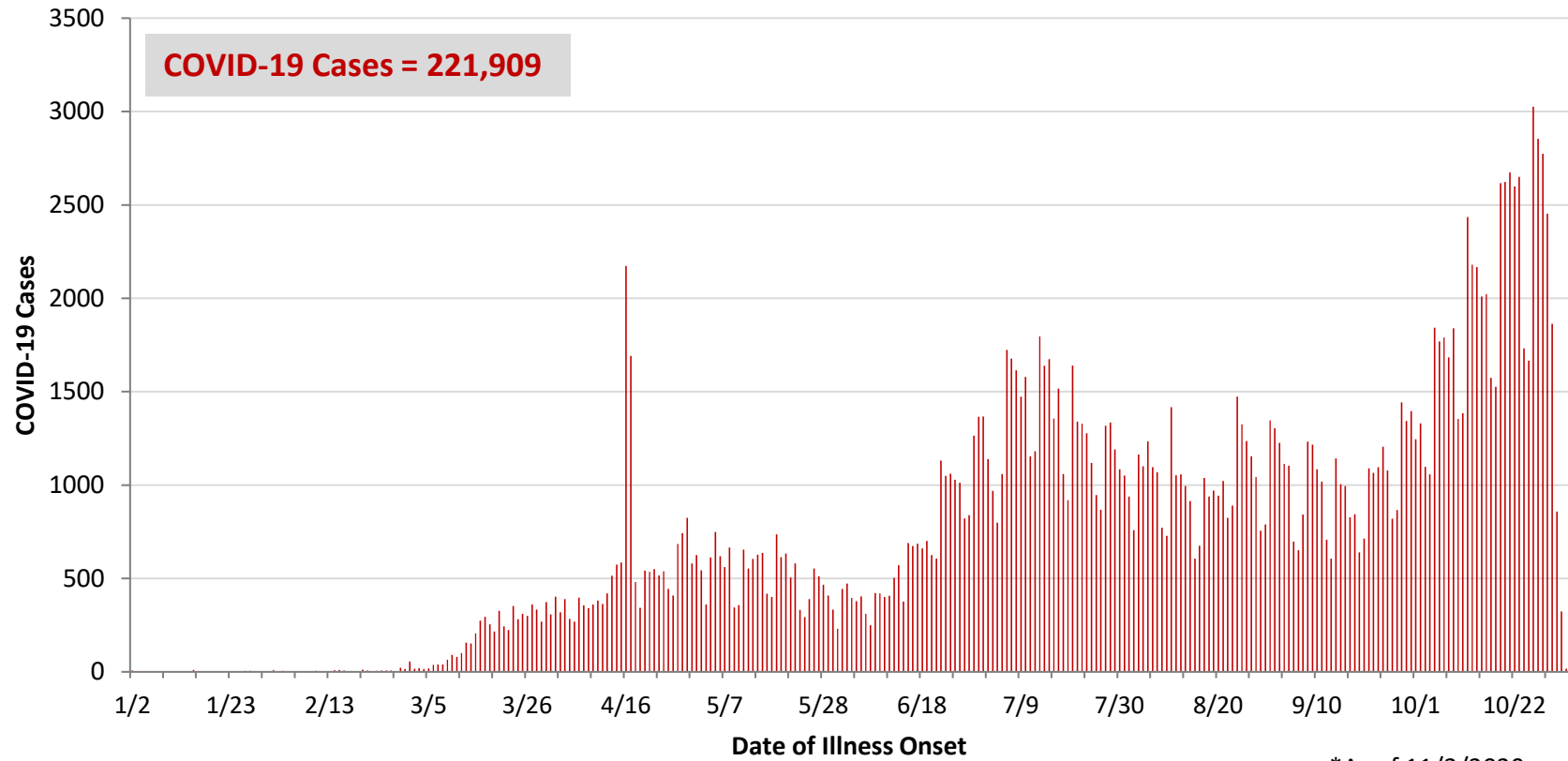
**Ohio, West Central Ohio (WCO), and Montgomery County COVID-19 Cases  
As of 11/2/20**

**Source:** The State of Ohio COVID-19 Dashboard, Ohio Department of Health

**Ohio:**

<b>Preliminary COVID-19 Cases Ohio, As of 11/2/2020</b>		
<b>Sex</b>	<b># Cases</b>	<b>% Cases</b>
Female	116,418	52%
Male	103,746	47%
Unknown	1,745	1%
<b>Total</b>	<b>221,909</b>	<b>100%</b>
<b>Age Group</b>		
<b>Age Group</b>	<b># Cases</b>	<b>% Cases</b>
0-19	27,401	12%
20-29	45,632	21%
30-39	32,775	15%
40-49	30,003	14%
50-59	32,350	15%
60-69	24,592	11%
70-79	15,669	7%
80+	13,304	6%
Unknown	183	0%
<b>Total</b>	<b>221,909</b>	<b>100%</b>
<b>Hospitalized</b>		
Hospitalized	19,402	8.7%
<b>Deaths</b>		
Deaths	5,340	2.4%
<b>Age Group</b>		
<b>Age Group</b>	<b>Deaths</b>	<b>% of Deaths</b>
0-19	2	0%
20-29	13	0%
30-39	39	1%
40-49	86	2%
50-59	301	6%
60-69	732	14%
70-79	1,357	25%
80+	2,810	53%
<b>Total</b>	<b>5,340</b>	<b>100%</b>

**PRELIMINARY COVID-19 Cases by Date of Illness Onset  
Ohio, 1/2/20 - 11/2/20\***

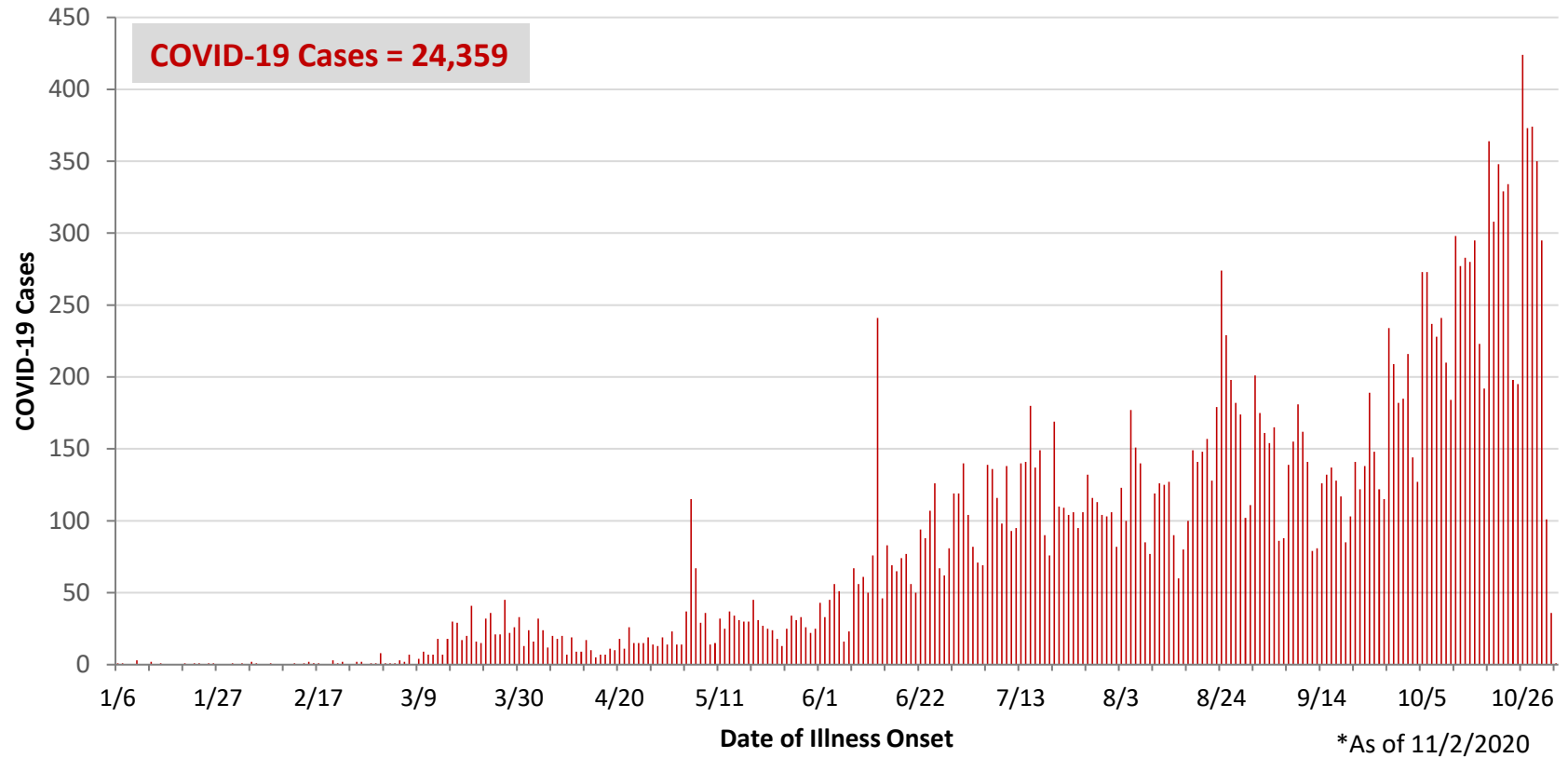


\*As of 11/2/2020

WCO:

Preliminary COVID-19 Cases West Central Ohio, As of 11/2/2020		
County	# Cases	% Cases
Champaign	484	2%
Clark	2,982	12%
Darke	1,336	5%
Greene	2,903	12%
Miami	2,423	10%
Montgomery	12,328	51%
Preble	807	3%
Shelby	1,096	4%
<b>Total</b>	<b>24,359</b>	<b>100%</b>
Sex		
Sex	# Cases	% Cases
Female	13,395	55%
Male	10,651	44%
Unknown	313	1%
<b>Total</b>	<b>24,359</b>	<b>100%</b>
Age Group		
Age Group	# Cases	% Cases
0-19	3,215	13%
20-29	4,701	19%
30-39	3,345	14%
40-49	3,077	13%
50-59	3,587	15%
60-69	2,833	12%
70-79	1,997	8%
80+	1,604	7%
<b>Total</b>	<b>24,359</b>	<b>100%</b>
Hospitalized	2,224	9.1%
Deaths	439	1.8%
Age Group		
Age Group	Deaths	% of Deaths
0-19	1	0%
20-29	3	1%
30-39	5	1%
40-49	9	2%
50-59	23	5%
60-69	61	14%
70-79	100	23%
80+	237	54%
<b>Total</b>	<b>439</b>	<b>100%</b>

**PRELIMINARY COVID-19 Cases by Date of Illness Onset  
West Central Ohio, 1/6/20 - 11/2/20\***



**Montgomery County:**

<b>Preliminary COVID-19 Cases Montgomery County, As of 11/2/2020</b>		
<b>Sex</b>	<b># Cases</b>	<b>% Cases</b>
Female	6,876	56%
Male	5,369	44%
Unknown	83	1%
<b>Total</b>	<b>12,328</b>	<b>100%</b>
<b>Age Group</b>		
<b>Age Group</b>	<b># Cases</b>	<b>% Cases</b>
0-19	1,820	15%
20-29	2,612	21%
30-39	1,737	14%
40-49	1,528	12%
50-59	1,727	14%
60-69	1,306	11%
70-79	894	7%
80+	702	6%
Unknown	2	0%
<b>Total</b>	<b>12,328</b>	<b>100%</b>
Hospitalized	1,330	10.8%
Deaths	190	1.5%
<b>Age Group</b>	<b>Deaths</b>	<b>% of Deaths</b>
0-19	1	1%
20-29	3	2%
30-39	3	2%
40-49	7	4%
50-59	14	7%
60-69	32	17%
70-79	47	25%
80+	83	44%
<b>Total</b>	<b>190</b>	<b>100%</b>

<b>Age Group</b>	<b>Hospitalizations</b>	<b>% of Age Group Cases</b>
0-19	41	2.3%
20-29	65	2.5%
30-39	103	5.9%
40-49	132	8.6%
50-59	217	12.6%
60-69	261	20.0%
70-79	296	33.1%
80+	215	30.6%
<b>Total</b>	<b>1,330</b>	<b>10.8%</b>

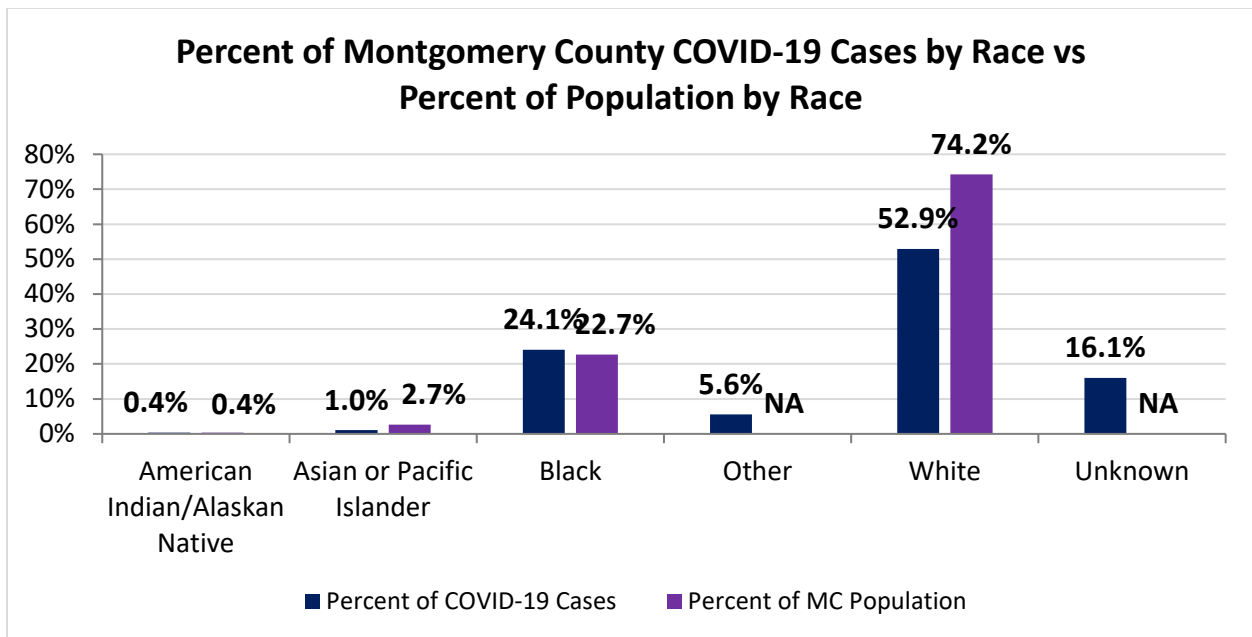
Source: Ohio Disease Reporting System, ODH

Note. All rates are per 100,000 population.

Montgomery County COVID-19 Cases by Race As of 11/2/20				
Race	Total Cases	Case Rate	Current Cases*	Current Case Rate*
American Indian/Alaskan Native (AI/AN)*	43	2,010.3	7	327.3
Asian	126	893.7	21	149.0
Black	2,903	2,401.0	362	299.4
Other	670	NA	146	NA
White	6,384	1,618.1	1355	343.4
Unknown	1,936	NA	656	NA
<b>Total</b>	<b>12,062</b>	<b>2,268.6</b>	<b>2,547</b>	<b>479.0</b>

\*Note. AI/ANs account for 0.4% of Montgomery County's population, and therefore, rates for this population will be large and may be misleading.

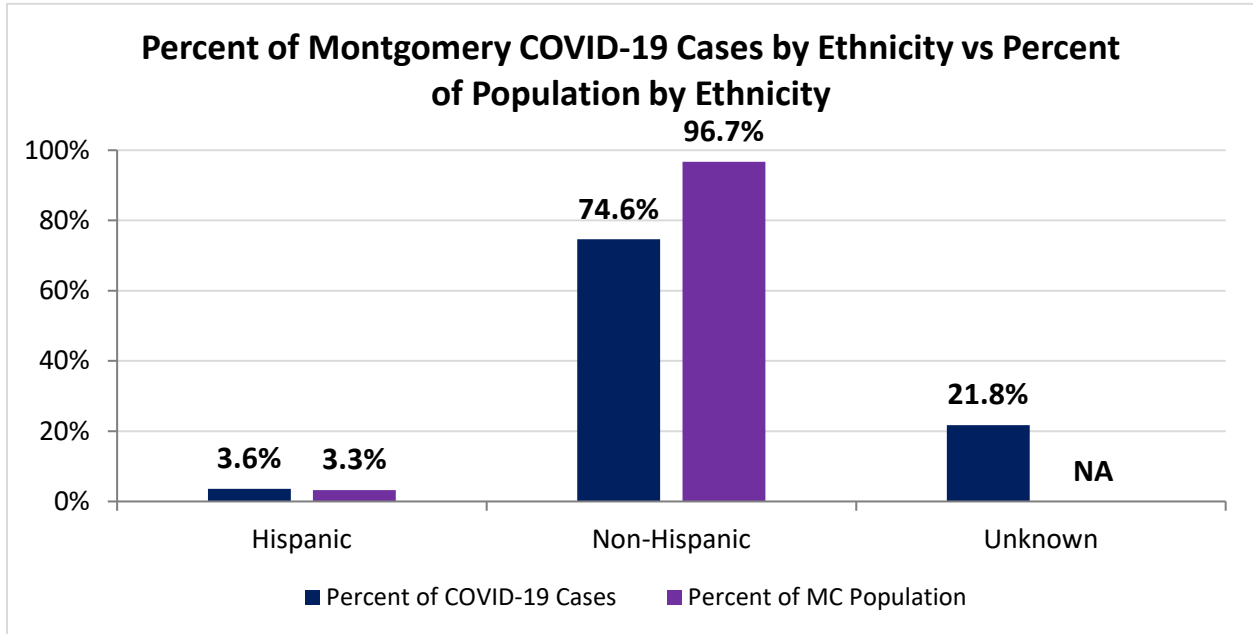
\*Current Cases – cases with symptom onset in the past 21 days. Current Case Rate – current cases per 100,000



Montgomery County COVID-19 Deaths by Race as of 11/2/2020		
Race	Count	Death Rate
American Indian/Alaskan Native	3	140.3
Asian or Pacific Islander	4	28.4
Black	69	57.1
Other	2	NA
White	115	29.1
Unknown	0	NA
<b>Total</b>	<b>193</b>	<b>36.3</b>

Montgomery County COVID-19 Cases by Ethnicity As of 11/2/20				
Ethnicity	Total Cases	Case Rate	Current Cases*	Current Case Rate*
Hispanic	434	2,504.6	59	340.5
Non-Hispanic	9,003	1,750.3	1655	321.8
Unknown	2,625	NA	833	NA
<b>Total</b>	<b>12,062</b>	<b>2,268.6</b>	<b>2,547</b>	<b>479.0</b>

\*Current Cases – cases with symptom onset in the past 21 days. Current Case Rate – current cases per 100,000



Montgomery County COVID-19 Cases by Health Care Worker Status As of 11/2/20		
Status	#	%
Health Care Worker	1,126	9.3%
Non-Health Care Worker	6,862	56.9%
Unknown	4,074	33.8%
<b>Total</b>	<b>12,062</b>	<b>100%</b>

Montgomery County COVID-19 Cases Age Range As of 11/2/20	
Stat	Age in Years
Age Range	<1 - 104
Average Age	42.1
Median Age	39.0

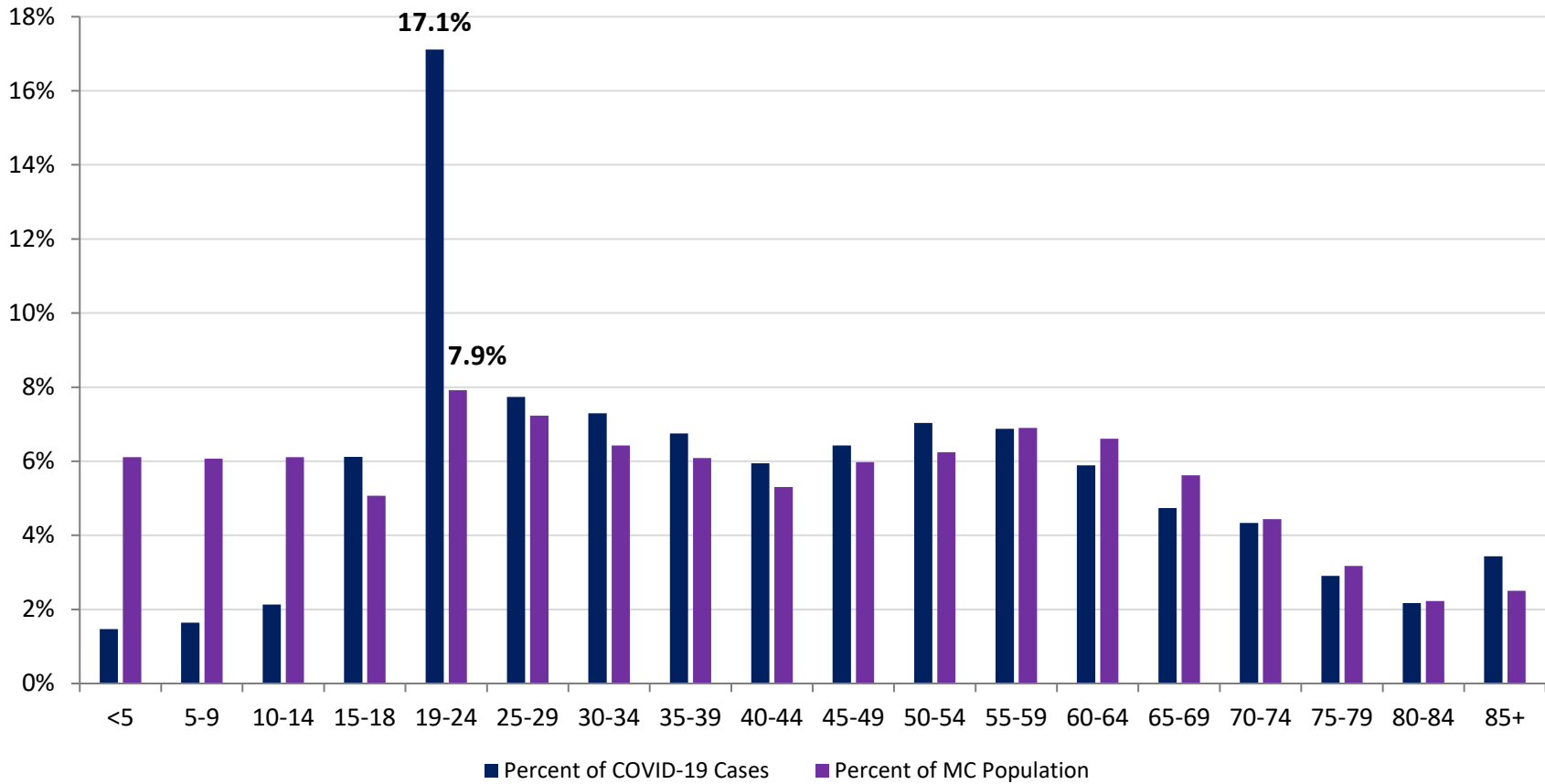
Montgomery County COVID-19 Cases by Age Group As of 11/2/20					
Age Group	Total Cases	Total Case Rate	Current Cases*	Current Case Rate*	Current Trend*
<5	177	542.6	34	104.2	
5-9	198	615.1	44	136.7	
10-14	257	800.8	55	171.4	
15-18	738	2,794.1	103	390.0	
19-24	2064	4,903.8	237	563.1	
25-29	933	2,432.5	210	547.5	
30-34	880	2,517.1	225	643.6	
35-39	814	2,521.6	202	625.8	
40-44	717	2,495.0	163	567.2	
45-49	775	2,529.5	183	597.3	
50-54	848	2,626.6	247	765.1	
55-59	829	2,287.9	192	529.9	
60-64	710	2,008.3	158	446.9	
65-69	571	1,889.4	130	430.2	
70-74	523	2,120.3	120	486.5	
75-79	350	2,036.1	78	453.8	
80-84	262	2,187.2	58	484.2	
85+	414	3,094.9	108	807.4	
<b>Total</b>	<b>12,060</b>	<b>2,268.3</b>	<b>2,547</b>	<b>479.0</b>	

\*Current Cases – cases with symptom onset in the past 21 days. Current Trend – compares current cases to current cases from 14 days ago. Current Case Rate – current cases per 100,000.

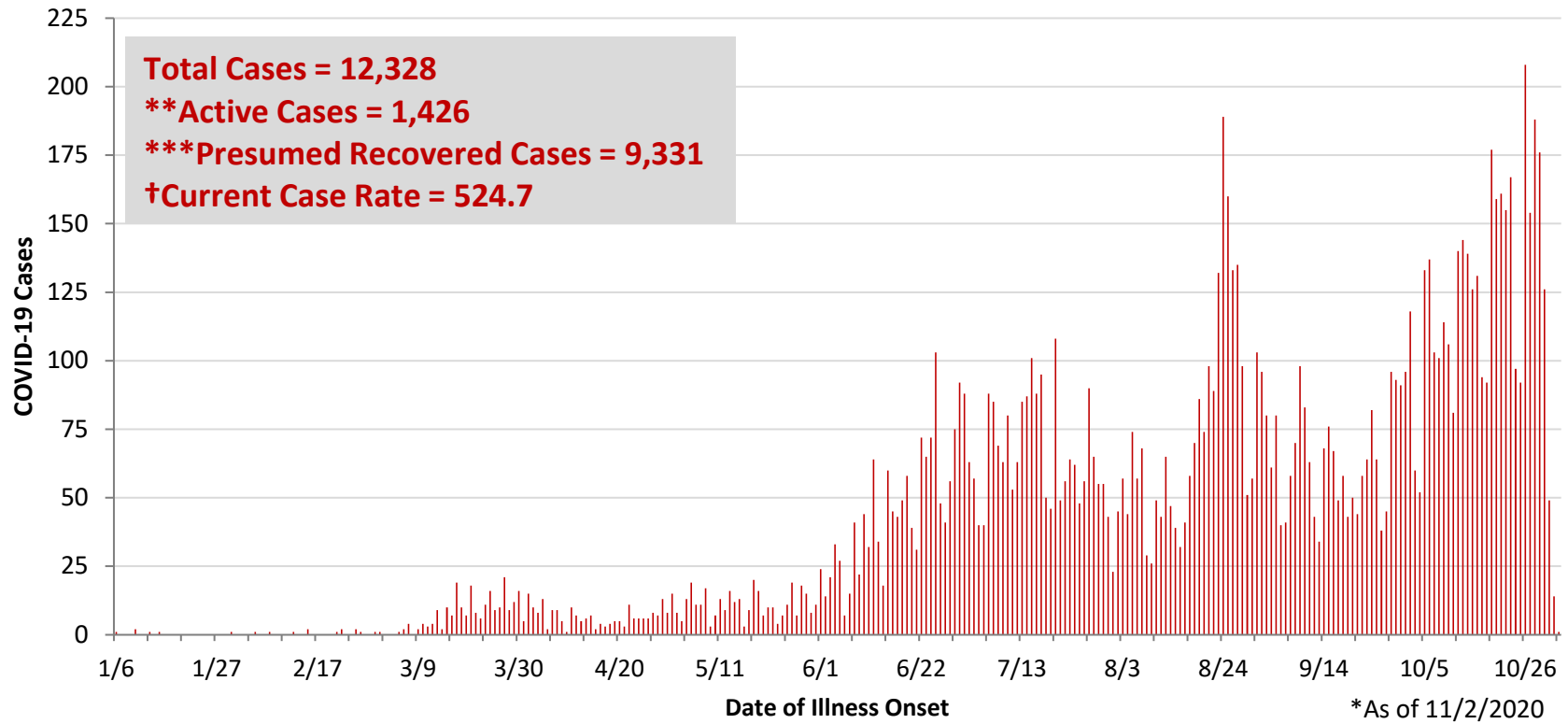
Current Trend	Interpretation
	Decrease in Cases
	No Change in Cases
	Increase in Cases



Percent of Montgomery County COVID-19 Cases by Age Group vs Percent of Population by Age Group



**PRELIMINARY COVID-19 Cases by Date of Illness Onset  
Montgomery County, 1/6/20 - 11/2/20\***

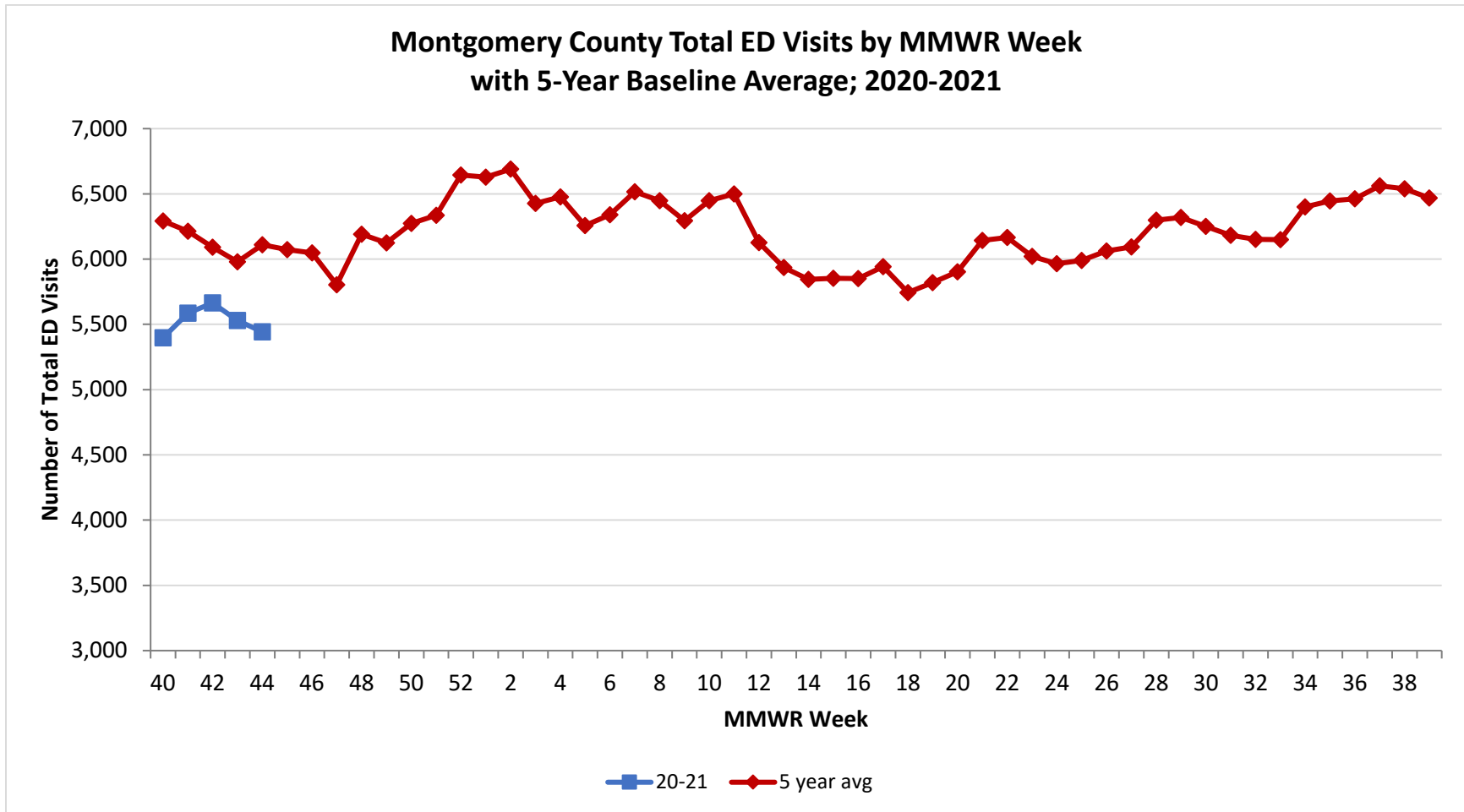


\*\*Active cases are based on the reported illness onset date (using a 10-day window) of reported cases.

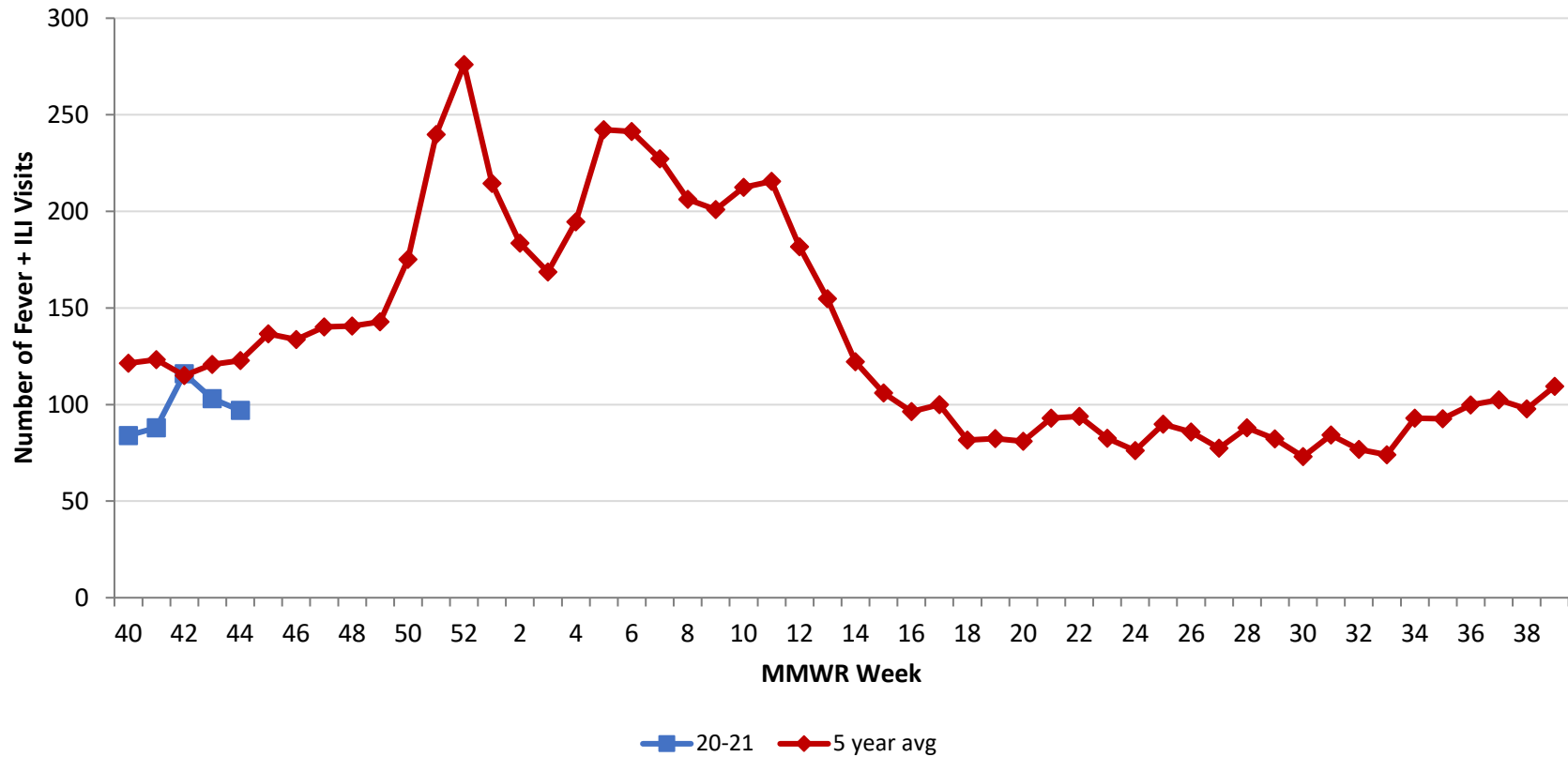
\*\*\*Presumed recovered is defined as cases with a symptom onset date >21 days prior who are not deceased.

†Current Case Rate – current cases (symptom onset past 21 days) per 100,000.

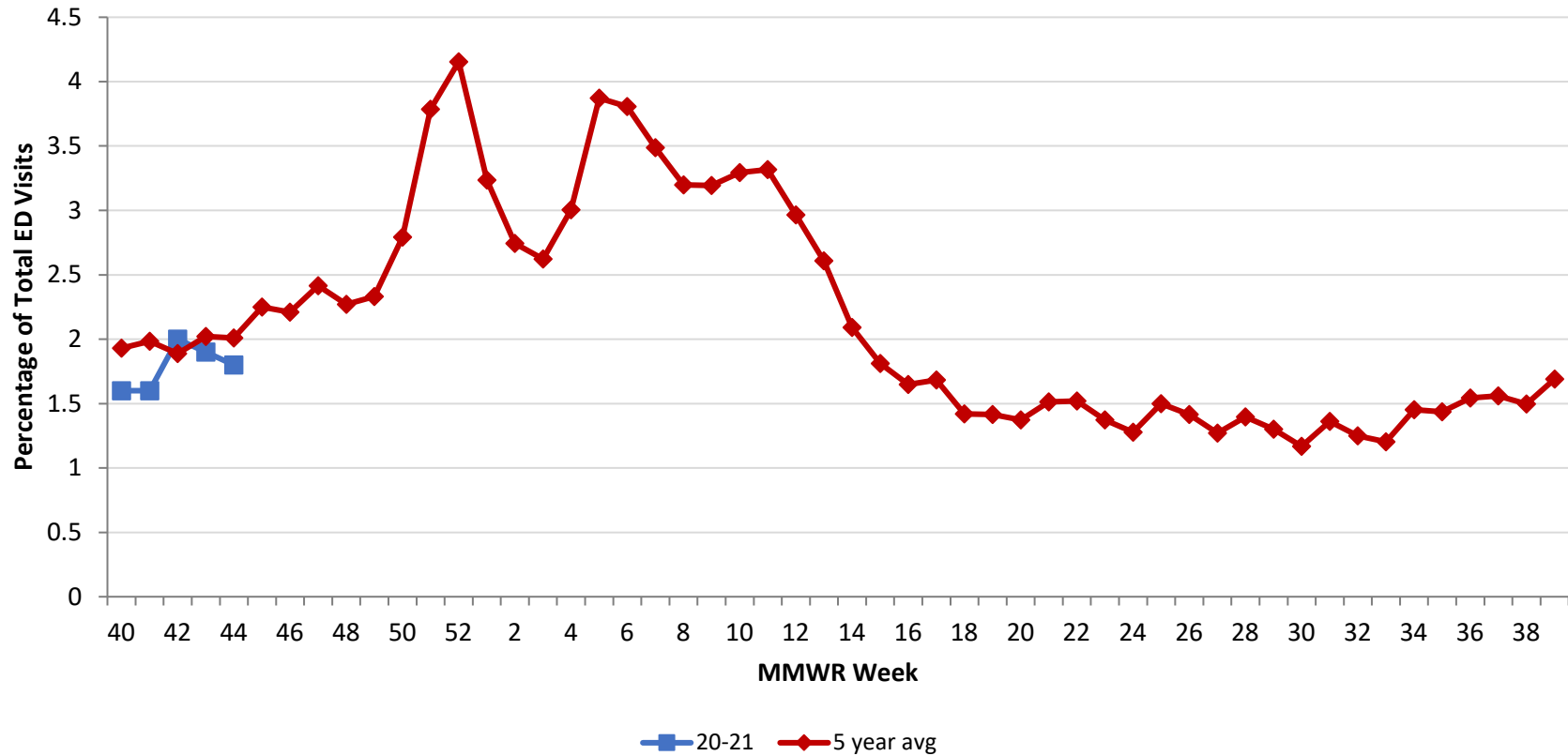
Source: EpiCenter Syndromic Surveillance, Health Monitoring Systems



Montgomery County Fever + ILI Specified ED Visits by MMWR Week  
with 5-Year Baseline Average; 2020-2021



**Montgomery County Fever + ILI Specified ED Visits (% of Total Visits) by MMWR Week with 5-Year Baseline Average; 2020-2021**



# Total Visits		
MMWR Week	20-21	5-Year Average
40	5,397	6,293.0
41	5,586	6,213.8
42	5,664	6,091.6
43	5,442	5,980.2
44		6,109.2
45		6,072.2
46		6,047.6
47		5,804.2
48		6,191.8
49		6,125.0
50		6,274.6
51		6,335.0
52		6,644.2
1		6,628.0
2		6,689.2
3		6,427.5
4		6,476.0
5		6,257.4
6		6,340.2
7		6,516.2
8		6,447.2
9		6,294.6
10		6,448.6
11		6,500.6
12		6,126.4
13		5,935.4
14		5,844.6
15		5,853.0
16		5,850.4
17		5,942.4
18		5,744.0
19		5,820.6
20		5,902.8
21		6,142.4
22		6,166.6
23		6,020.4

# Fever + ILI Visits		
MMWR Week	20-21	5-Year Average
40	84	121.4
41	88	123.2
42	116	115.0
43	97	120.8
44		122.8
45		136.6
46		133.6
47		140.2
48		140.6
49		142.8
50		175.2
51		239.8
52		276.0
1		214.4
2		183.6
3		168.6
4		194.6
5		242.2
6		241.4
7		227.2
8		206.2
9		201.0
10		212.4
11		215.6
12		181.6
13		154.8
14		122.2
15		106.0
16		96.4
17		100.0
18		81.6
19		82.4
20		81.0
21		93.0
22		93.8
23		82.6

% Fever + ILI Visits		
MMWR Week	20-21	5-Year Average
40	1.6	1.9
41	1.6	2.0
42	2.0	1.9
43	1.8	2.0
44		2.0
45		2.2
46		2.2
47		2.4
48		2.3
49		2.3
50		2.8
51		3.8
52		4.2
1		3.2
2		2.7
3		2.6
4		3.0
5		3.9
6		3.8
7		3.5
8		3.2
9		3.2
10		3.3
11		3.3
12		3.0
13		2.6
14		2.1
15		1.8
16		1.6
17		1.7
18		1.4
19		1.4
20		1.4
21		1.5
22		1.5
23		1.4