



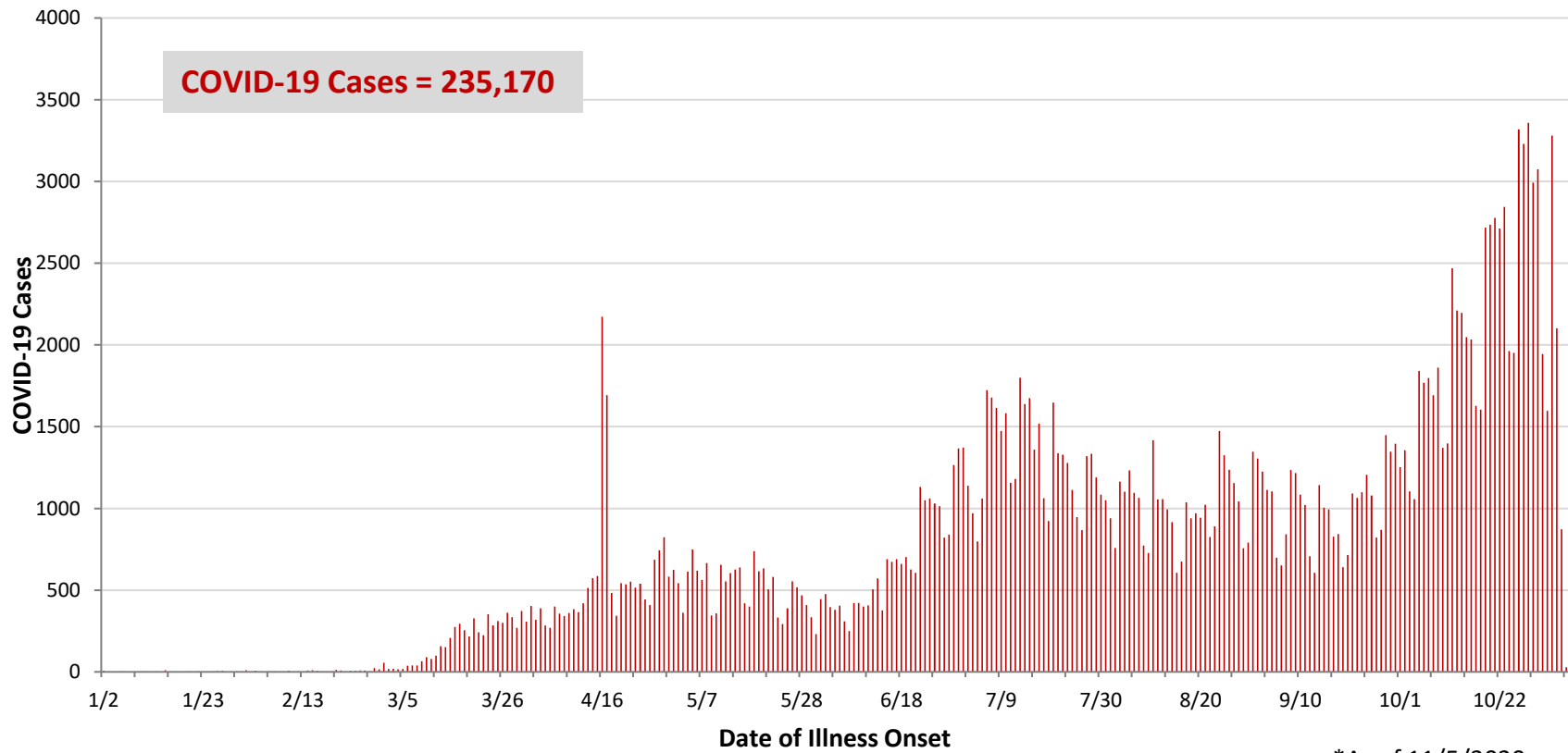
**Ohio, West Central Ohio (WCO), and Montgomery County COVID-19 Cases  
As of 11/5/20**

**Source:** The State of Ohio COVID-19 Dashboard, Ohio Department of Health

**Ohio:**

<b>Preliminary COVID-19 Cases Ohio, As of 11/5/2020</b>		
<b>Sex</b>	<b># Cases</b>	<b>% Cases</b>
Female	123,535	53%
Male	109,814	47%
Unknown	1,821	1%
<b>Total</b>	<b>235,170</b>	<b>100%</b>
<b>Age Group</b>		
<b>Age Group</b>	<b># Cases</b>	<b>% Cases</b>
0-19	28,882	12%
20-29	47,998	20%
30-39	34,827	15%
40-49	31,947	14%
50-59	34,477	15%
60-69	26,293	11%
70-79	16,626	7%
80+	13,929	6%
Unknown	191	0%
<b>Total</b>	<b>235,170</b>	<b>100%</b>
<b>Hospitalized</b>		
Hospitalized	20,015	8.5%
<b>Deaths</b>		
Deaths	5,461	2.3%
<b>Age Group</b>		
<b>Age Group</b>	<b>Deaths</b>	<b>% of Deaths</b>
0-19	2	0%
20-29	13	0%
30-39	40	1%
40-49	90	2%
50-59	306	6%
60-69	745	14%
70-79	1,379	25%
80+	2,885	53%
Unknown	1	0%
<b>Total</b>	<b>5,461</b>	<b>100%</b>

**PRELIMINARY COVID-19 Cases by Date of Illness Onset  
Ohio, 1/2/20 - 11/5/20\***

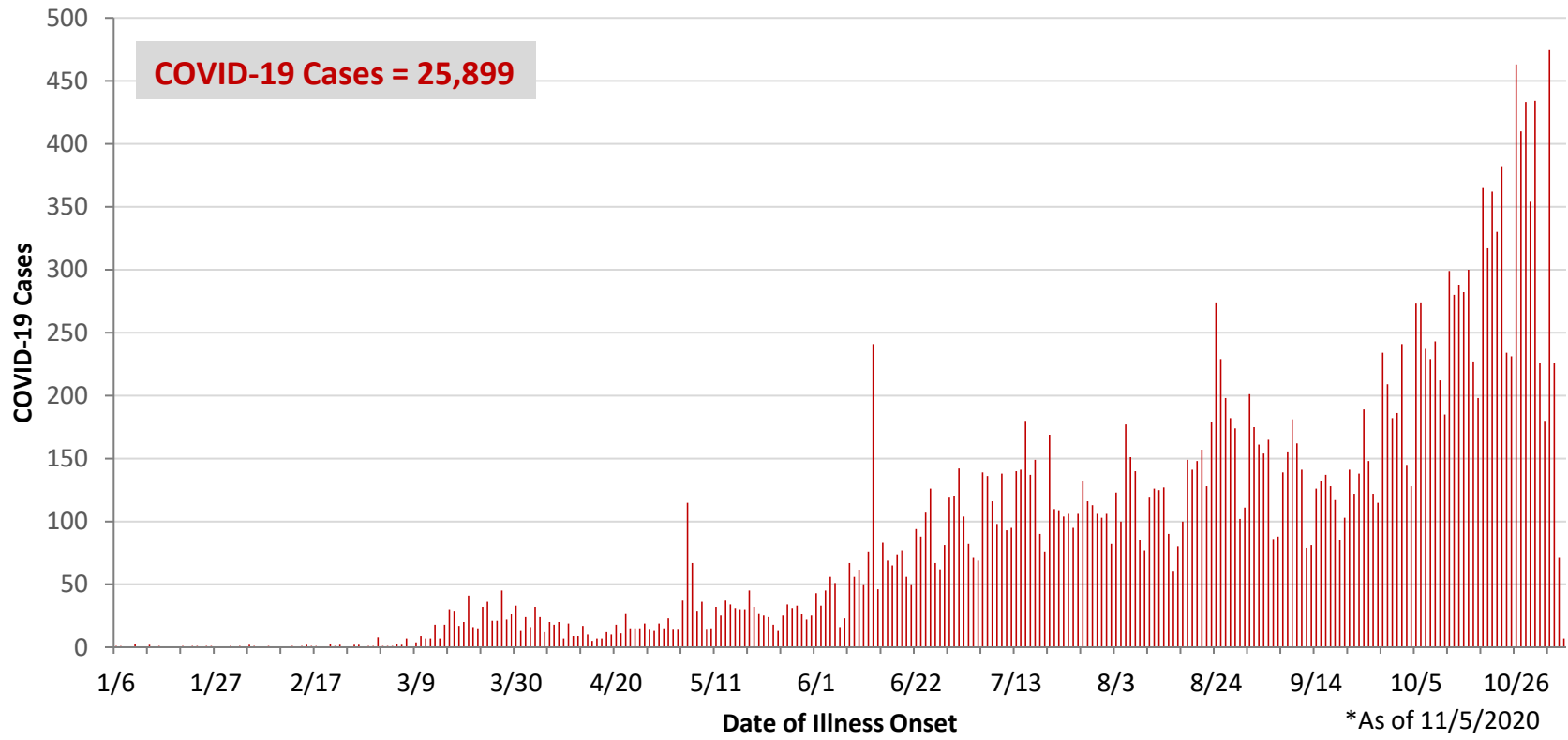


\*As of 11/5/2020

WCO:

Preliminary COVID-19 Cases West Central Ohio, As of 11/5/2020		
County	# Cases	% Cases
Champaign	527	2%
Clark	3,193	12%
Darke	1,382	5%
Greene	3,141	12%
Miami	2,570	10%
Montgomery	13,036	50%
Preble	870	3%
Shelby	1,180	5%
<b>Total</b>	<b>25,899</b>	<b>100%</b>
Sex		
Sex	# Cases	% Cases
Female	14,254	55%
Male	11,341	44%
Unknown	304	1%
<b>Total</b>	<b>25,899</b>	<b>100%</b>
Age Group		
Age Group	# Cases	% Cases
0-19	3,395	13%
20-29	4,901	19%
30-39	3,586	14%
40-49	3,287	13%
50-59	3,826	15%
60-69	3,036	12%
70-79	2,143	8%
80+	1,702	7%
Unknown	23	0%
<b>Total</b>	<b>25,899</b>	<b>100%</b>
Hospitalized	2,330	9.0%
Deaths	446	1.7%
Age Group		
Age Group	Deaths	% of Deaths
0-19	1	0%
20-29	3	1%
30-39	5	1%
40-49	11	2%
50-59	23	5%
60-69	62	14%
70-79	102	23%
80+	239	54%
<b>Total</b>	<b>446</b>	<b>100%</b>

**PRELIMINARY COVID-19 Cases by Date of Illness Onset  
West Central Ohio, 1/6/20 - 11/5/20\***



**Montgomery County:**

<b>Preliminary COVID-19 Cases Montgomery County, As of 11/5/2020</b>		
<b>Sex</b>	<b># Cases</b>	<b>% Cases</b>
Female	7,278	56%
Male	5,673	44%
Unknown	85	1%
<b>Total</b>	<b>13,036</b>	<b>100%</b>
<b>Age Group</b>		
<b>Age Group</b>	<b># Cases</b>	<b>% Cases</b>
0-19	1,910	15%
20-29	2,721	21%
30-39	1,848	14%
40-49	1,621	12%
50-59	1,813	14%
60-69	1,400	11%
70-79	960	7%
80+	760	6%
Unknown	3	0%
<b>Total</b>	<b>13,036</b>	<b>100%</b>
<b>Hospitalized</b>		
Hospitalized	1,389	10.7%
<b>Deaths</b>		
Deaths	191	1.5%
<b>Age Group</b>		
<b>Age Group</b>	<b>Deaths</b>	<b>% of Deaths</b>
0-19	1	1%
20-29	3	2%
30-39	3	2%
40-49	8	4%
50-59	14	7%
60-69	32	17%
70-79	47	25%
80+	83	43%
<b>Total</b>	<b>191</b>	<b>100%</b>

<b>Age Group</b>	<b>Hospitalizations</b>	<b>% of Age Group Cases</b>
0-19	41	2.1%
20-29	65	2.4%
30-39	108	5.8%
40-49	138	8.5%
50-59	227	12.5%
60-69	272	19.4%
70-79	310	32.3%
80+	228	30.0%
<b>Total</b>	<b>1,389</b>	<b>10.7%</b>

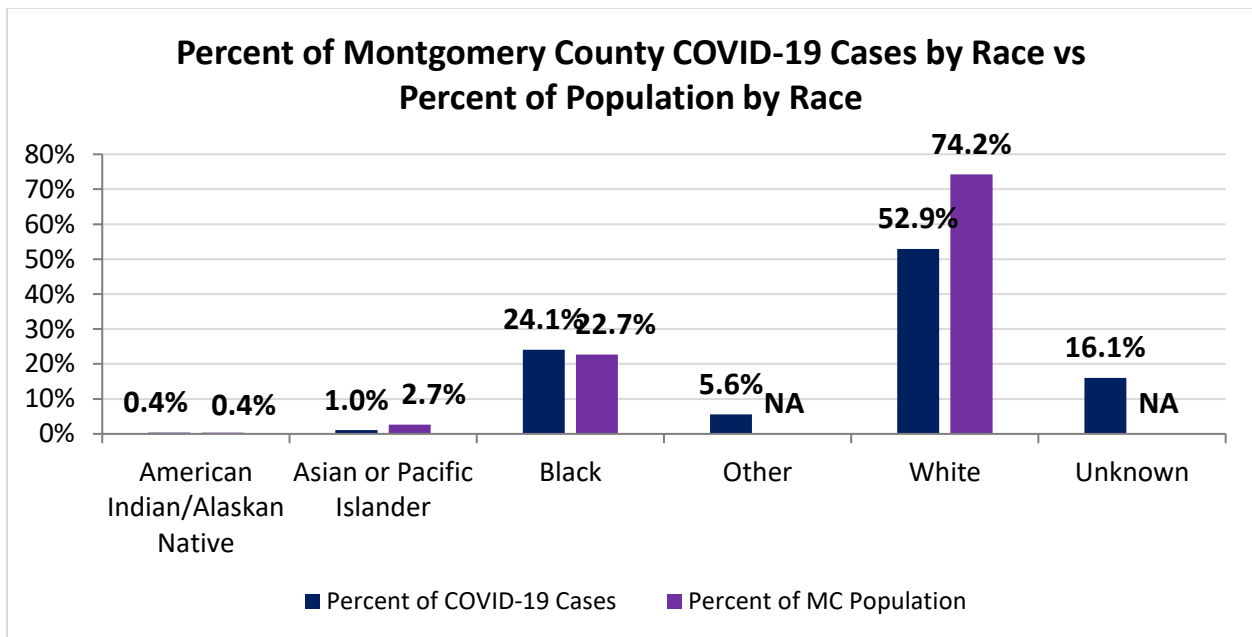
Source: Ohio Disease Reporting System, ODH

Note. All rates are per 100,000 population.

Montgomery County COVID-19 Cases by Race As of 11/2/20				
Race	Total Cases	Case Rate	Current Cases*	Current Case Rate*
American Indian/Alaskan Native (AI/AN)*	43	2,010.3	7	327.3
Asian	126	893.7	21	149.0
Black	2,903	2,401.0	362	299.4
Other	670	NA	146	NA
White	6,384	1,618.1	1355	343.4
Unknown	1,936	NA	656	NA
<b>Total</b>	<b>12,062</b>	<b>2,268.6</b>	<b>2,547</b>	<b>479.0</b>

\*Note. AI/ANs account for 0.4% of Montgomery County's population, and therefore, rates for this population will be large and may be misleading.

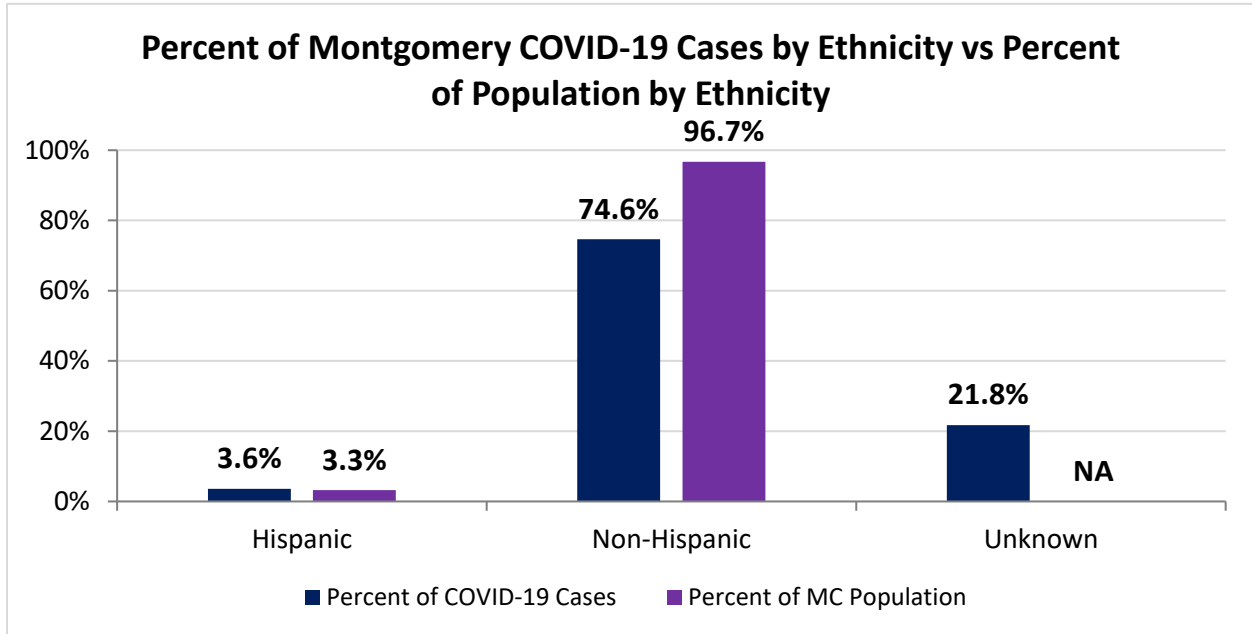
\*Current Cases – cases with symptom onset in the past 21 days. Current Case Rate – current cases per 100,000



Montgomery County COVID-19 Deaths by Race as of 11/2/2020		
Race	Count	Death Rate
American Indian/Alaskan Native	3	140.3
Asian or Pacific Islander	4	28.4
Black	69	57.1
Other	2	NA
White	115	29.1
Unknown	0	NA
<b>Total</b>	<b>193</b>	<b>36.3</b>

Montgomery County COVID-19 Cases by Ethnicity As of 11/2/20				
Ethnicity	Total Cases	Case Rate	Current Cases*	Current Case Rate*
Hispanic	434	2,504.6	59	340.5
Non-Hispanic	9,003	1,750.3	1655	321.8
Unknown	2,625	NA	833	NA
<b>Total</b>	<b>12,062</b>	<b>2,268.6</b>	<b>2,547</b>	<b>479.0</b>

\*Current Cases – cases with symptom onset in the past 21 days. Current Case Rate – current cases per 100,000



Montgomery County COVID-19 Cases by Health Care Worker Status As of 11/2/20		
Status	#	%
Health Care Worker	1,126	9.3%
Non-Health Care Worker	6,862	56.9%
Unknown	4,074	33.8%
<b>Total</b>	<b>12,062</b>	<b>100%</b>

Montgomery County COVID-19 Cases Age Range As of 11/2/20	
Stat	Age in Years
Age Range	<1 - 104
Average Age	42.1
Median Age	39.0

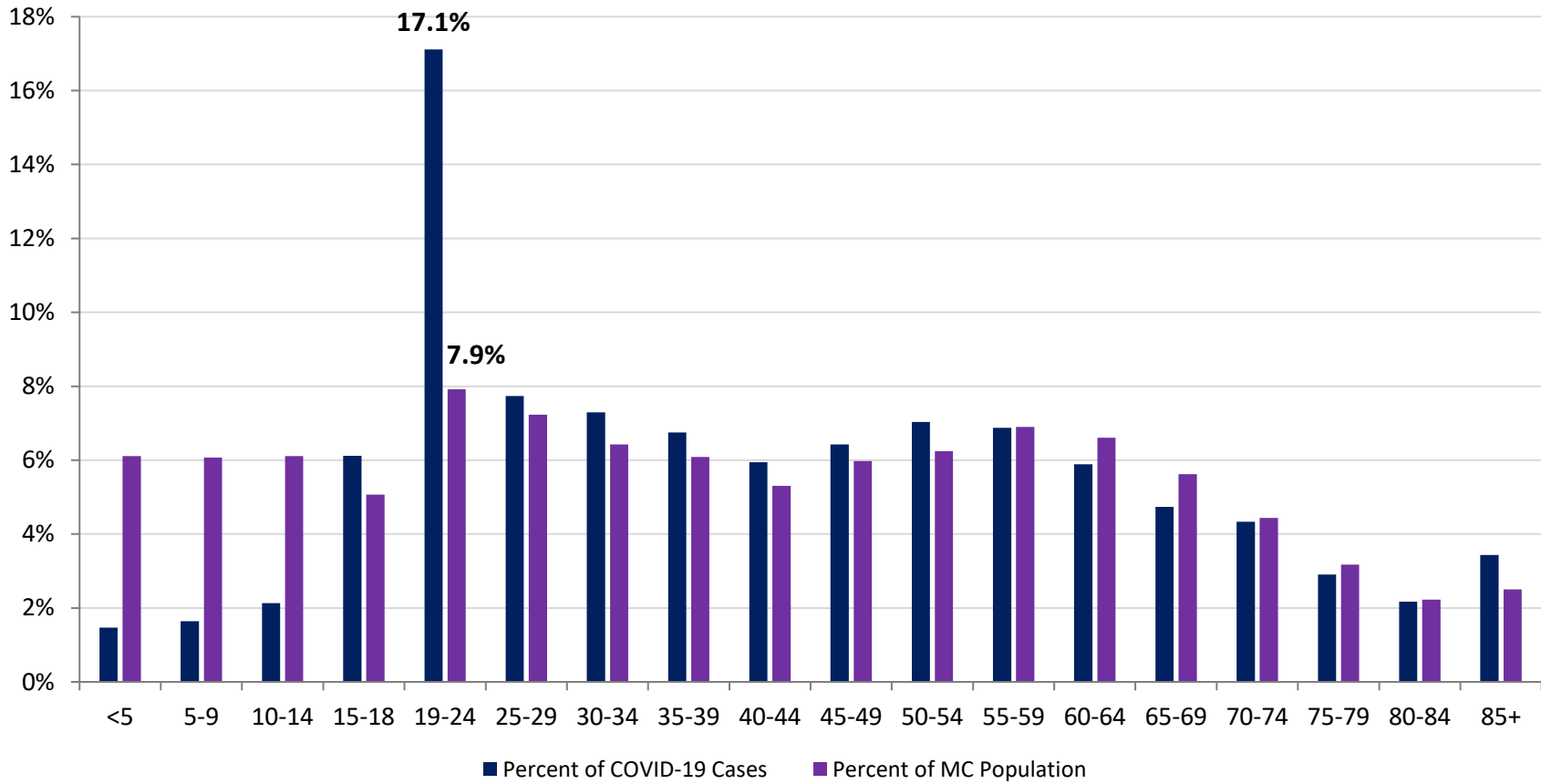
Montgomery County COVID-19 Cases by Age Group As of 11/2/20					
Age Group	Total Cases	Total Case Rate	Current Cases*	Current Case Rate*	Current Trend*
<5	177	542.6	34	104.2	
5-9	198	615.1	44	136.7	
10-14	257	800.8	55	171.4	
15-18	738	2,794.1	103	390.0	
19-24	2064	4,903.8	237	563.1	
25-29	933	2,432.5	210	547.5	
30-34	880	2,517.1	225	643.6	
35-39	814	2,521.6	202	625.8	
40-44	717	2,495.0	163	567.2	
45-49	775	2,529.5	183	597.3	
50-54	848	2,626.6	247	765.1	
55-59	829	2,287.9	192	529.9	
60-64	710	2,008.3	158	446.9	
65-69	571	1,889.4	130	430.2	
70-74	523	2,120.3	120	486.5	
75-79	350	2,036.1	78	453.8	
80-84	262	2,187.2	58	484.2	
85+	414	3,094.9	108	807.4	
<b>Total</b>	<b>12,060</b>	<b>2,268.3</b>	<b>2,547</b>	<b>479.0</b>	

\*Current Cases – cases with symptom onset in the past 21 days. Current Trend – compares current cases to current cases from 14 days ago. Current Case Rate – current cases per 100,000.

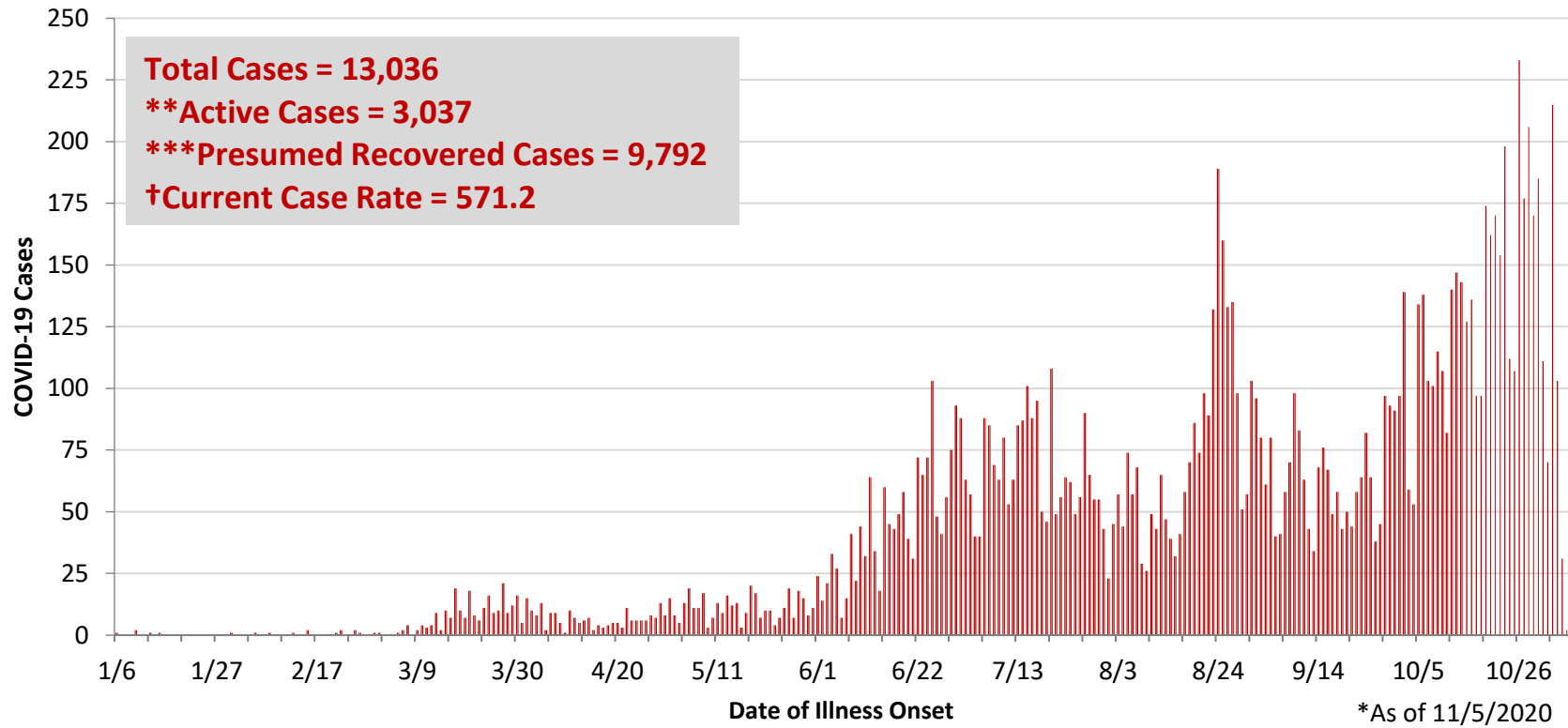
Current Trend	Interpretation
	Decrease in Cases
	No Change in Cases
	Increase in Cases



Percent of Montgomery County COVID-19 Cases by Age Group vs Percent of Population by Age Group



**PRELIMINARY COVID-19 Cases by Date of Illness Onset  
Montgomery County, 1/6/20 - 11/5/20\***

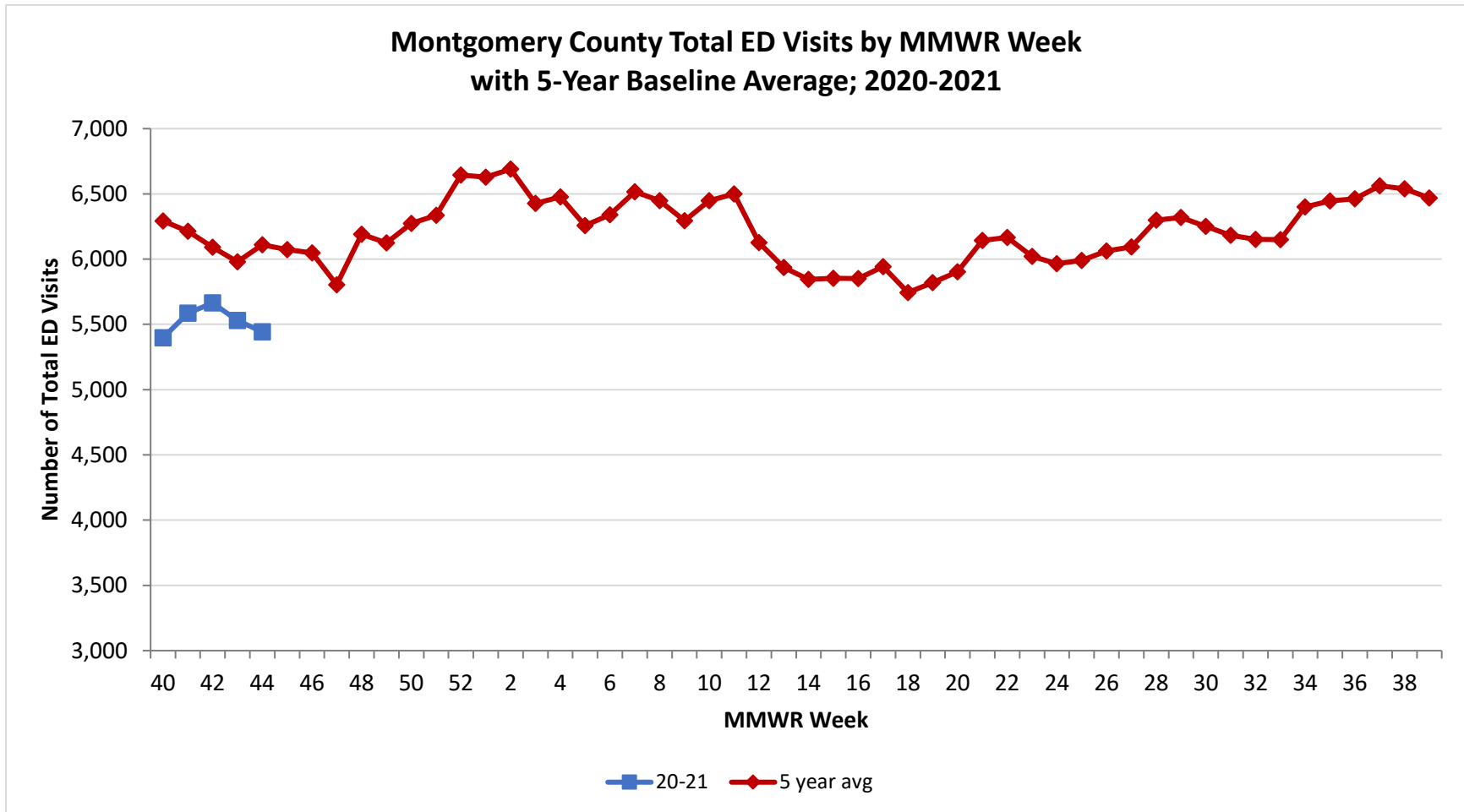


\*\*Active cases are based on the reported illness onset date (using a 10-day window) of reported cases.

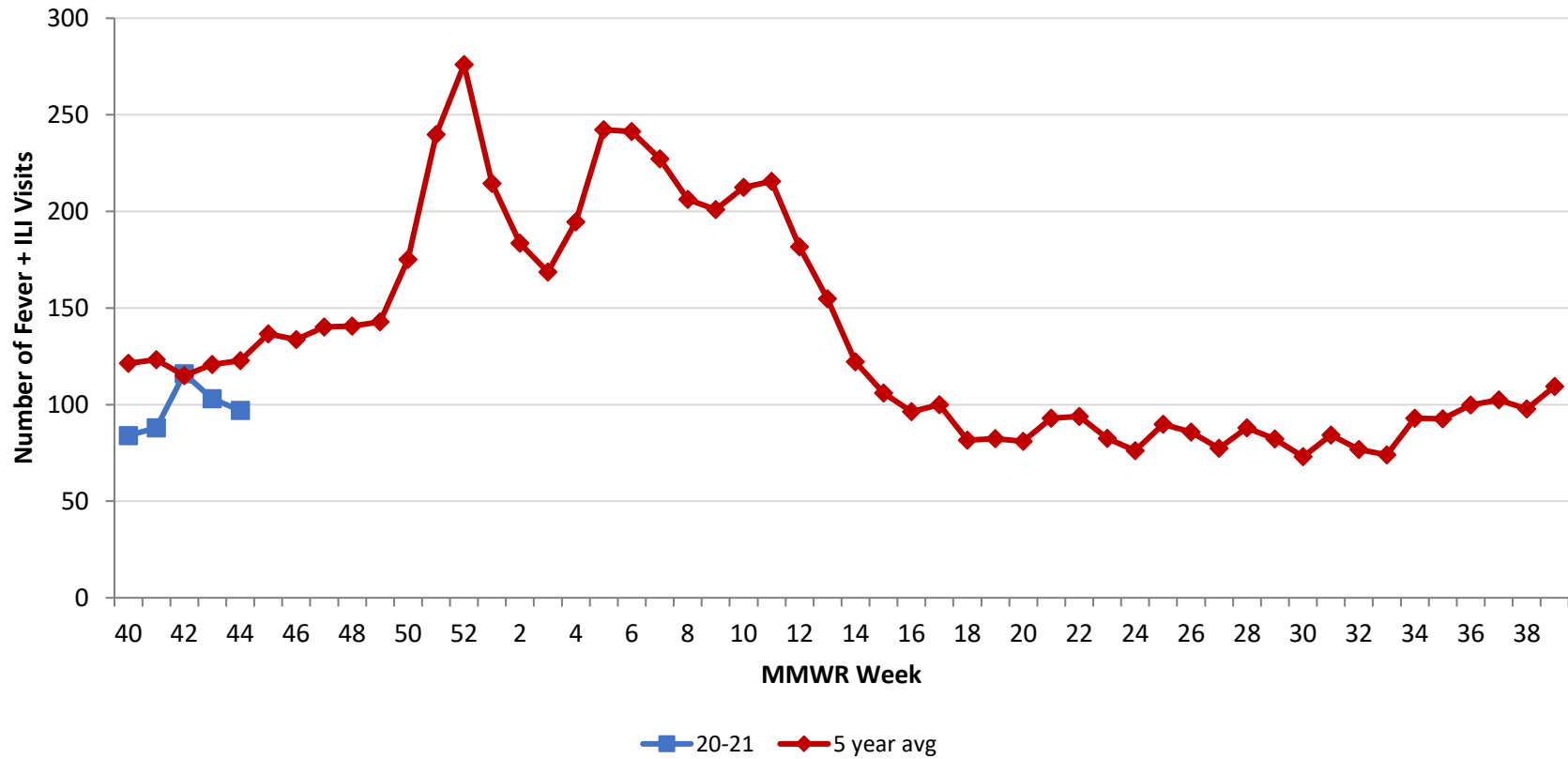
\*\*\*Presumed recovered is defined as cases with a symptom onset date >21 days prior who are not deceased.

†Current Case Rate – current cases (symptom onset past 21 days) per 100,000.

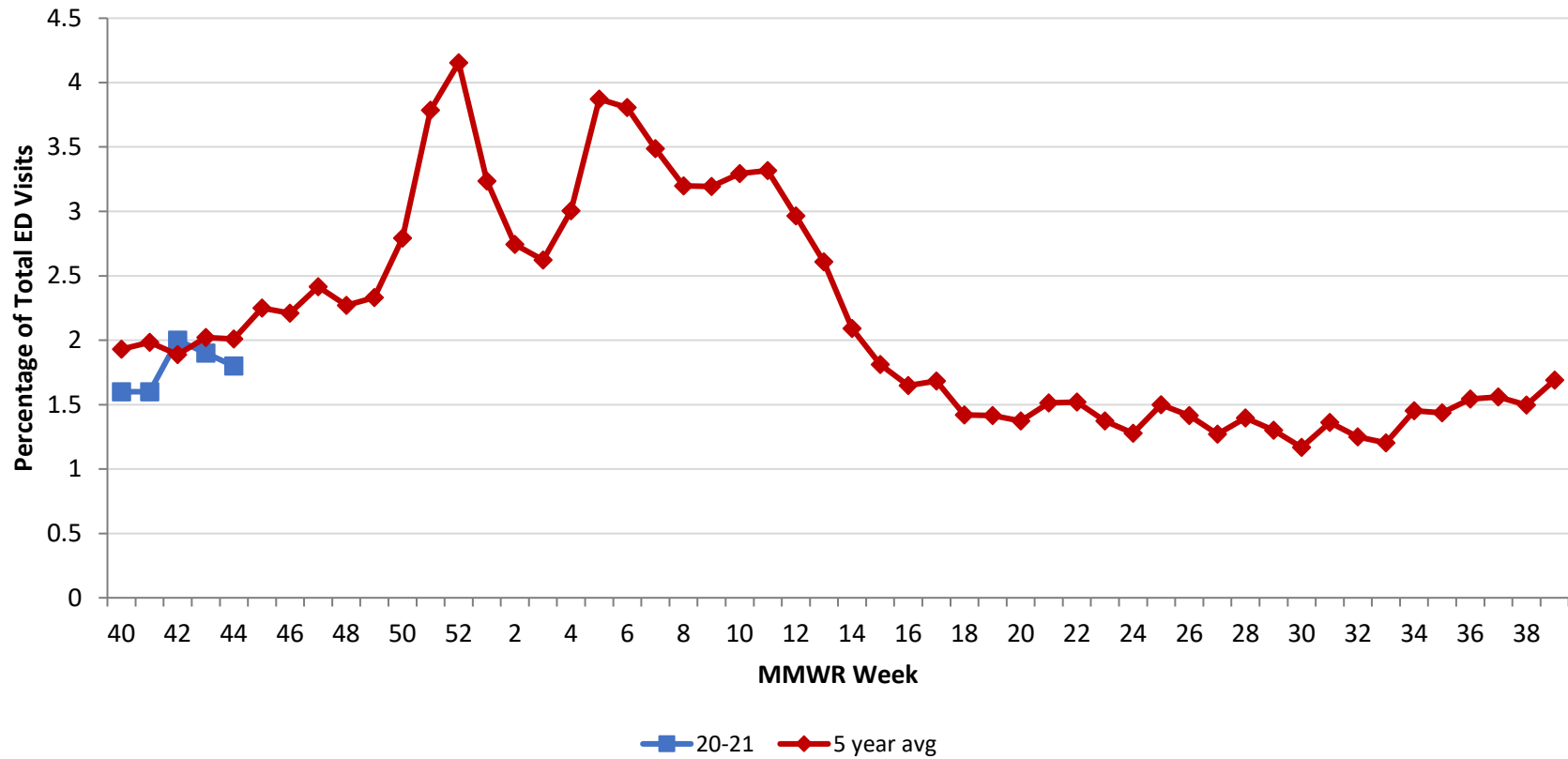
Source: EpiCenter Syndromic Surveillance, Health Monitoring Systems



Montgomery County Fever + ILI Specified ED Visits by MMWR Week  
with 5-Year Baseline Average; 2020-2021



**Montgomery County Fever + ILI Specified ED Visits (% of Total Visits) by MMWR Week with 5-Year Baseline Average; 2020-2021**



# Total Visits		
MMWR Week	20-21	5-Year Average
40	5,397	6,293.0
41	5,586	6,213.8
42	5,664	6,091.6
43	5,442	5,980.2
44		6,109.2
45		6,072.2
46		6,047.6
47		5,804.2
48		6,191.8
49		6,125.0
50		6,274.6
51		6,335.0
52		6,644.2
1		6,628.0
2		6,689.2
3		6,427.5
4		6,476.0
5		6,257.4
6		6,340.2
7		6,516.2
8		6,447.2
9		6,294.6
10		6,448.6
11		6,500.6
12		6,126.4
13		5,935.4
14		5,844.6
15		5,853.0
16		5,850.4
17		5,942.4
18		5,744.0
19		5,820.6
20		5,902.8
21		6,142.4
22		6,166.6
23		6,020.4

# Fever + ILI Visits		
MMWR Week	20-21	5-Year Average
40	84	121.4
41	88	123.2
42	116	115.0
43	97	120.8
44		122.8
45		136.6
46		133.6
47		140.2
48		140.6
49		142.8
50		175.2
51		239.8
52		276.0
1		214.4
2		183.6
3		168.6
4		194.6
5		242.2
6		241.4
7		227.2
8		206.2
9		201.0
10		212.4
11		215.6
12		181.6
13		154.8
14		122.2
15		106.0
16		96.4
17		100.0
18		81.6
19		82.4
20		81.0
21		93.0
22		93.8
23		82.6

% Fever + ILI Visits		
MMWR Week	20-21	5-Year Average
40	1.6	1.9
41	1.6	2.0
42	2.0	1.9
43	1.8	2.0
44		2.0
45		2.2
46		2.2
47		2.4
48		2.3
49		2.3
50		2.8
51		3.8
52		4.2
1		3.2
2		2.7
3		2.6
4		3.0
5		3.9
6		3.8
7		3.5
8		3.2
9		3.2
10		3.3
11		3.3
12		3.0
13		2.6
14		2.1
15		1.8
16		1.6
17		1.7
18		1.4
19		1.4
20		1.4
21		1.5
22		1.5
23		1.4