



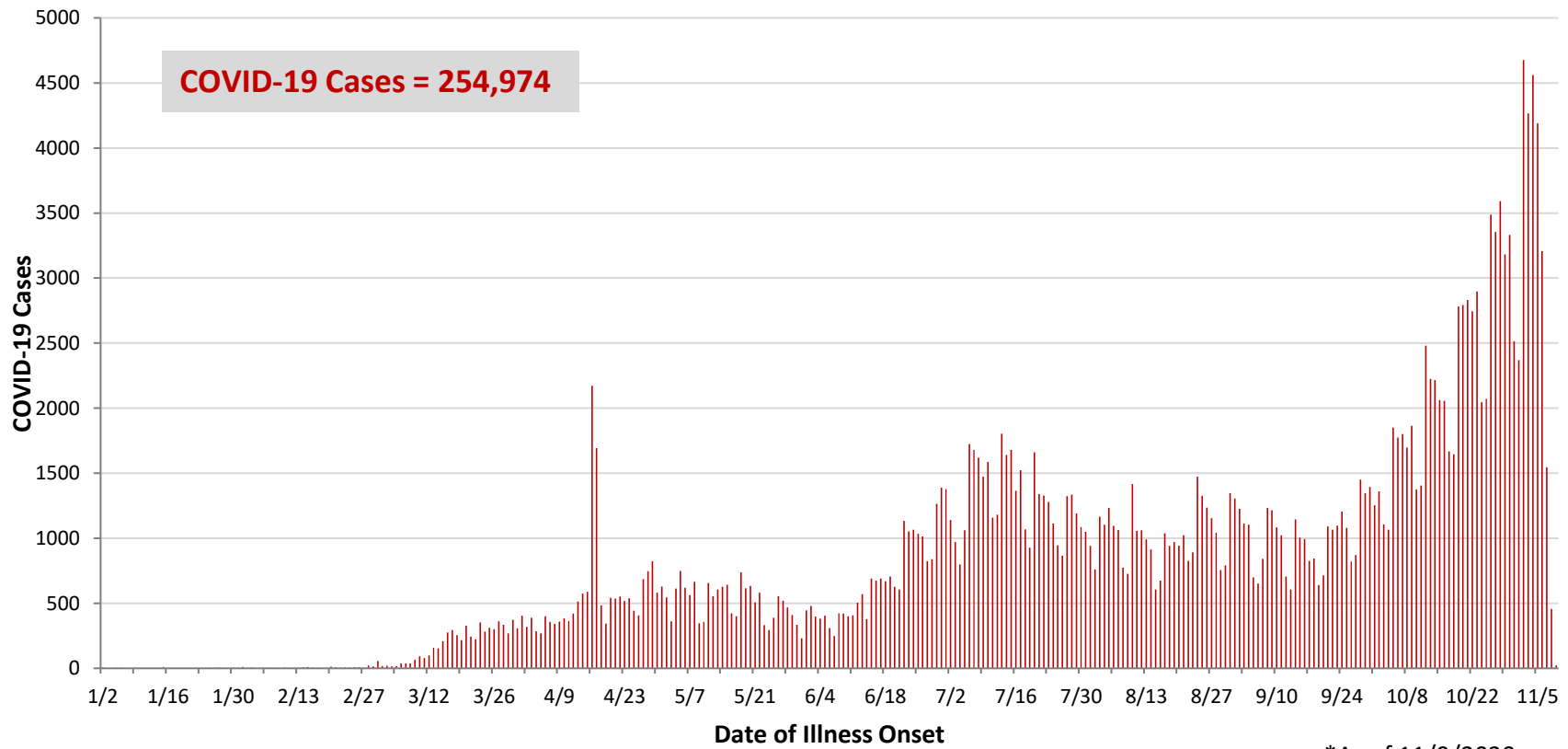
**Ohio, West Central Ohio (WCO), and Montgomery County COVID-19 Cases
As of 11/9/2020**

Source: The State of Ohio COVID-19 Dashboard, Ohio Department of Health

Ohio:

Preliminary COVID-19 Cases Ohio, As of 11/9/2020		
Sex	# Cases	% Cases
Female	134,217	53%
Male	118,873	47%
Unknown	1,884	1%
Total	254,974	100%
Age Group		
Age Group	# Cases	% Cases
0-19	31,466	12%
20-29	51,821	20%
30-39	37,712	15%
40-49	34,857	14%
50-59	37,606	15%
60-69	28,568	11%
70-79	17,906	7%
80+	14,828	6%
Unknown	210	0%
Total	254,974	100%
Hospitalized		
Hospitalized	20,651	8.1%
Deaths		
Deaths	5,524	2.2%
Age Group		
Age Group	Deaths	% of Deaths
0-19	3	0%
20-29	13	0%
30-39	40	1%
40-49	90	2%
50-59	311	6%
60-69	754	14%
70-79	1,393	25%
80+	2,920	53%
Unknown	0	0%
Total	5,524	100%

**PRELIMINARY COVID-19 Cases by Date of Illness Onset
Ohio, 1/2/20 - 11/9/20***

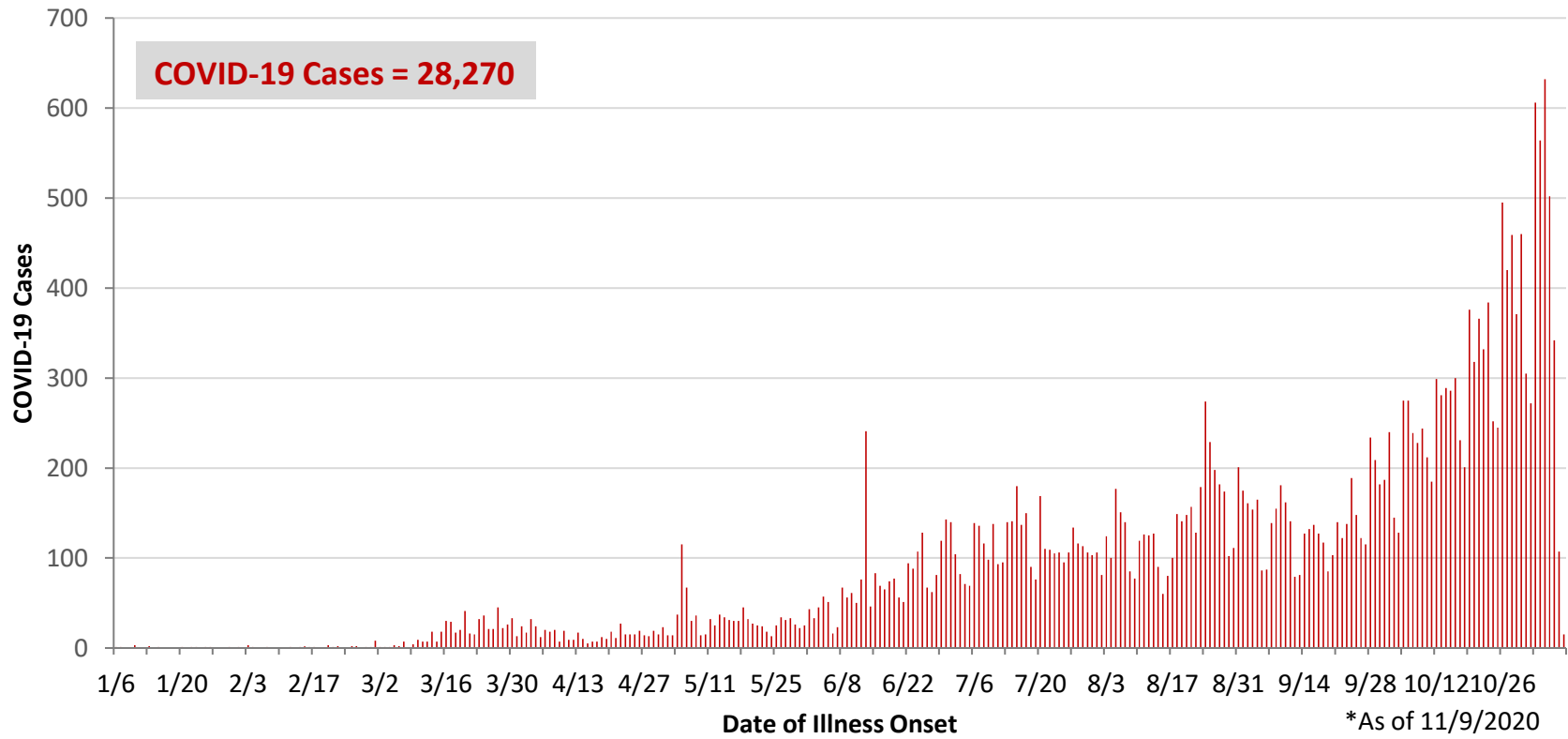


*As of 11/9/2020

WCO:

Preliminary COVID-19 Cases West Central Ohio, As of 11/9/2020		
County	# Cases	% Cases
Champaign	585	2%
Clark	3,493	12%
Darke	1,494	5%
Greene	3,471	12%
Miami	2,833	10%
Montgomery	14,169	50%
Preble	961	3%
Shelby	1,264	4%
Total	28,270	100%
Sex		
Sex	# Cases	% Cases
Female	14,254	55%
Male	11,341	44%
Unknown	304	1%
Total	25,899	100%
Age Group		
Age Group	# Cases	% Cases
0-19	3,702	13%
20-29	5,330	19%
30-39	3,931	14%
40-49	3,640	13%
50-59	4,216	15%
60-69	3,311	12%
70-79	2,319	8%
80+	1,798	6%
Unknown	23	0%
Total	28,270	100%
Hospitalized	2,405	8.5%
Deaths	452	1.6%
Age Group		
Age Group	Deaths	% of Deaths
0-19	1	0%
20-29	3	1%
30-39	5	1%
40-49	11	2%
50-59	24	5%
60-69	62	14%
70-79	105	23%
80+	241	53%
Total	452	100%

**PRELIMINARY COVID-19 Cases by Date of Illness Onset
West Central Ohio, 1/7/20 - 11/9/20***



Montgomery County:

Preliminary COVID-19 Cases Montgomery County, As of 11/9/2020		
Sex	# Cases	% Cases
Female	7,872	56%
Male	6,210	44%
Unknown	87	1%
Total	14,169	100%
Age Group		
Age Group	# Cases	% Cases
0-19	2,068	15%
20-29	2,937	21%
30-39	2,014	14%
40-49	1,793	13%
50-59	2,004	14%
60-69	1,518	11%
70-79	1,035	7%
80+	798	6%
Unknown	2	0%
Total	14,169	100%
Hospitalized		
Hospitalized	1,429	10.1%
Deaths		
Deaths	193	1.4%
Age Group		
Age Group	Deaths	% of Deaths
0-19	1	1%
20-29	3	2%
30-39	3	2%
40-49	8	4%
50-59	15	8%
60-69	32	17%
70-79	47	24%
80+	84	44%
Total	193	100%

Age Group	Hospitalizations	% of Age Group Cases
0-19	41	2.0%
20-29	67	2.3%
30-39	112	5.6%
40-49	140	7.8%
50-59	231	11.5%
60-69	280	18.4%
70-79	321	31.0%
80+	237	29.7%
Total	1,429	10.1%

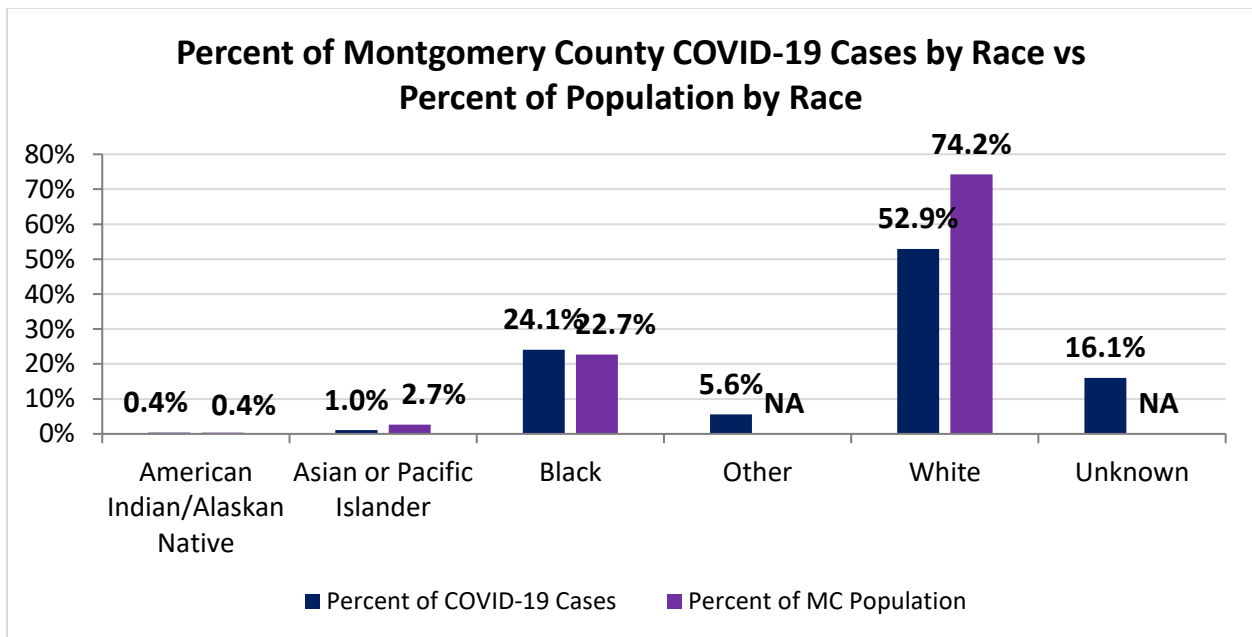
Source: Ohio Disease Reporting System, ODH

Note. All rates are per 100,000 population.

Montgomery County COVID-19 Cases by Race As of 11/2/20				
Race	Total Cases	Case Rate	Current Cases*	Current Case Rate*
American Indian/Alaskan Native (AI/AN)*	43	2,010.3	7	327.3
Asian	126	893.7	21	149.0
Black	2,903	2,401.0	362	299.4
Other	670	NA	146	NA
White	6,384	1,618.1	1355	343.4
Unknown	1,936	NA	656	NA
Total	12,062	2,268.6	2,547	479.0

*Note. AI/ANs account for 0.4% of Montgomery County's population, and therefore, rates for this population will be large and may be misleading.

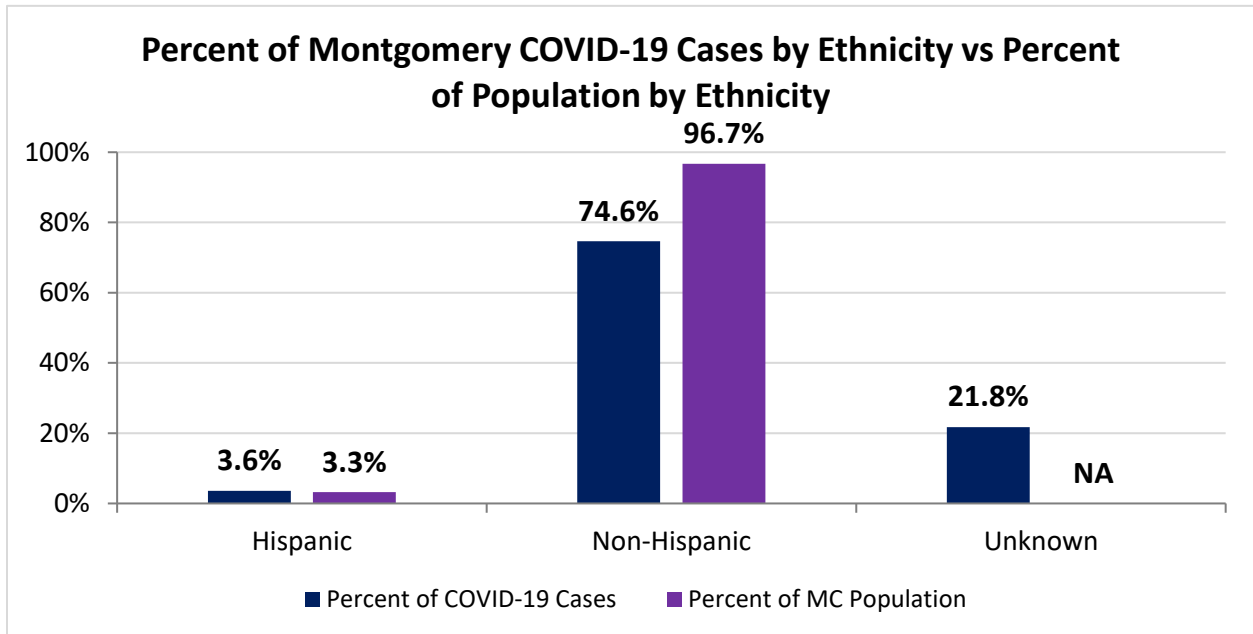
*Current Cases – cases with symptom onset in the past 21 days. Current Case Rate – current cases per 100,000



Montgomery County COVID-19 Deaths by Race as of 11/2/2020		
Race	Count	Death Rate
American Indian/Alaskan Native	3	140.3
Asian or Pacific Islander	4	28.4
Black	69	57.1
Other	2	NA
White	115	29.1
Unknown	0	NA
Total	193	36.3

Montgomery County COVID-19 Cases by Ethnicity As of 11/2/20				
Ethnicity	Total Cases	Case Rate	Current Cases*	Current Case Rate*
Hispanic	434	2,504.6	59	340.5
Non-Hispanic	9,003	1,750.3	1655	321.8
Unknown	2,625	NA	833	NA
Total	12,062	2,268.6	2,547	479.0

*Current Cases – cases with symptom onset in the past 21 days. Current Case Rate – current cases per 100,000



Montgomery County COVID-19 Cases by Health Care Worker Status As of 11/2/20		
Status	#	%
Health Care Worker	1,126	9.3%
Non-Health Care Worker	6,862	56.9%
Unknown	4,074	33.8%
Total	12,062	100%

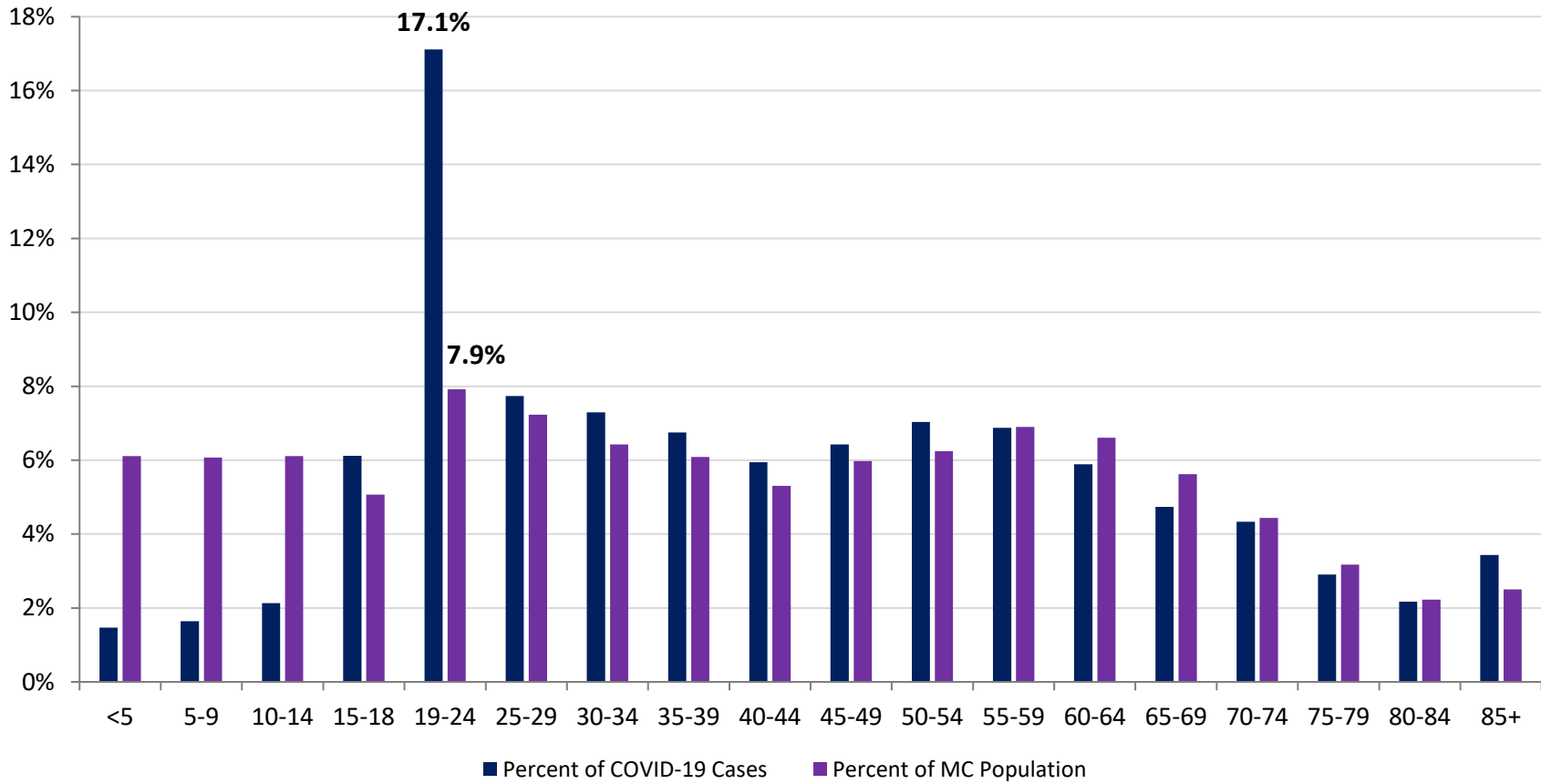
Montgomery County COVID-19 Cases Age Range As of 11/2/20	
Stat	Age in Years
Age Range	<1 - 104
Average Age	42.1
Median Age	39.0

Montgomery County COVID-19 Cases by Age Group As of 11/2/20					
Age Group	Total Cases	Total Case Rate	Current Cases*	Current Case Rate*	Current Trend*
<5	177	542.6	34	104.2	
5-9	198	615.1	44	136.7	
10-14	257	800.8	55	171.4	
15-18	738	2,794.1	103	390.0	
19-24	2064	4,903.8	237	563.1	
25-29	933	2,432.5	210	547.5	
30-34	880	2,517.1	225	643.6	
35-39	814	2,521.6	202	625.8	
40-44	717	2,495.0	163	567.2	
45-49	775	2,529.5	183	597.3	
50-54	848	2,626.6	247	765.1	
55-59	829	2,287.9	192	529.9	
60-64	710	2,008.3	158	446.9	
65-69	571	1,889.4	130	430.2	
70-74	523	2,120.3	120	486.5	
75-79	350	2,036.1	78	453.8	
80-84	262	2,187.2	58	484.2	
85+	414	3,094.9	108	807.4	
Total	12,060	2,268.3	2,547	479.0	

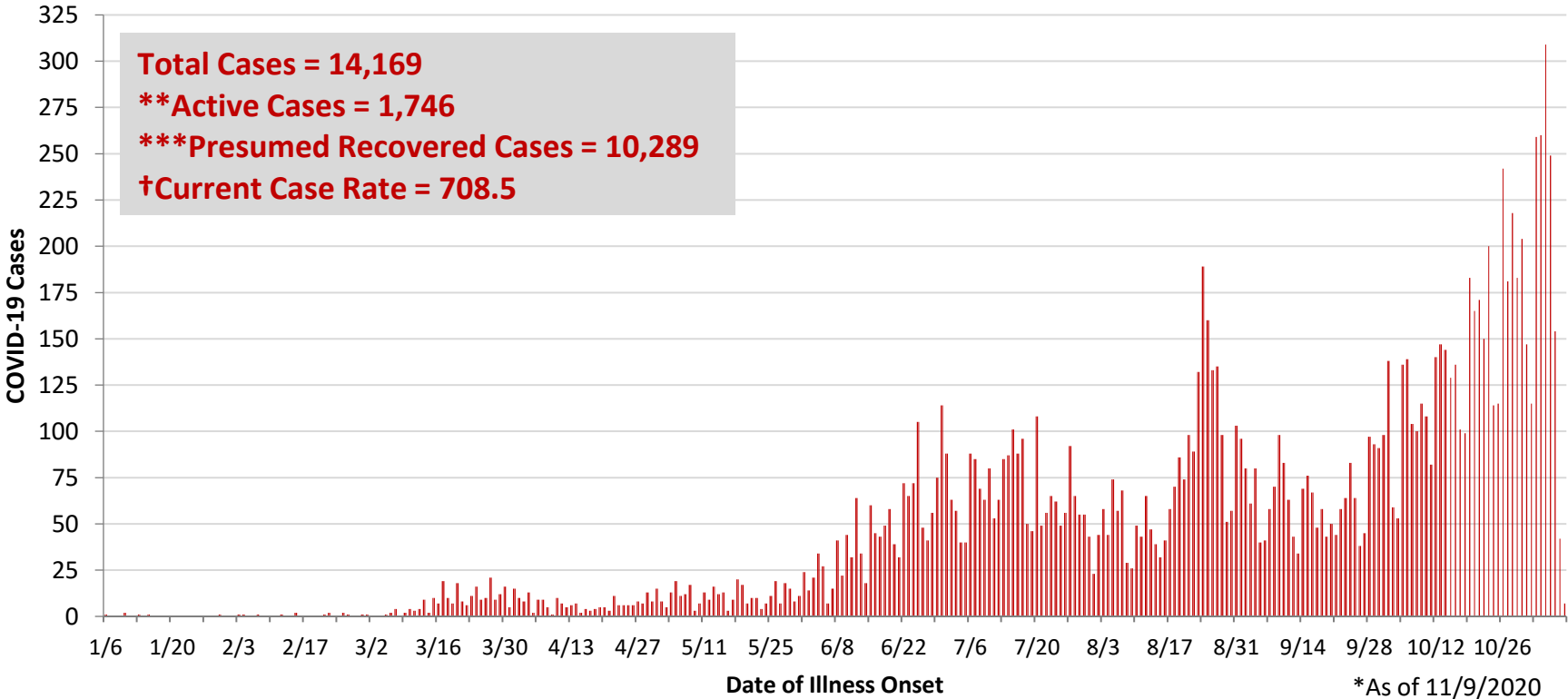
*Current Cases – cases with symptom onset in the past 21 days. Current Trend – compares current cases to current cases from 14 days ago. Current Case Rate – current cases per 100,000.

Current Trend	Interpretation
	Decrease in Cases
	No Change in Cases
	Increase in Cases

Percent of Montgomery County COVID-19 Cases by Age Group vs Percent of Population by Age Group



**PRELIMINARY COVID-19 Cases by Date of Illness Onset
Montgomery County, 1/6/20 - 11/9/20***



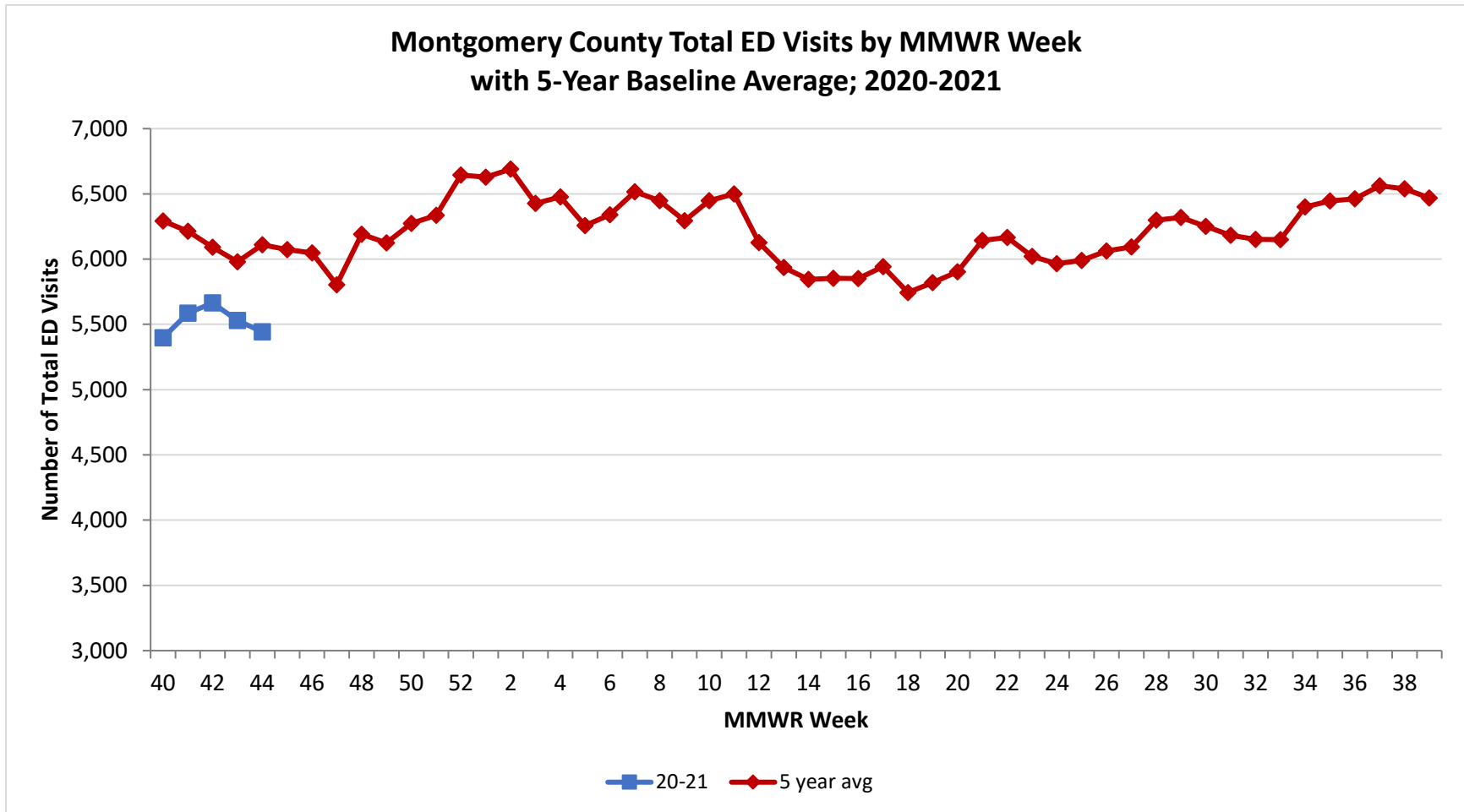
*As of 11/9/2020

**Active cases are based on the reported illness onset date (using a 10-day window) of reported cases.

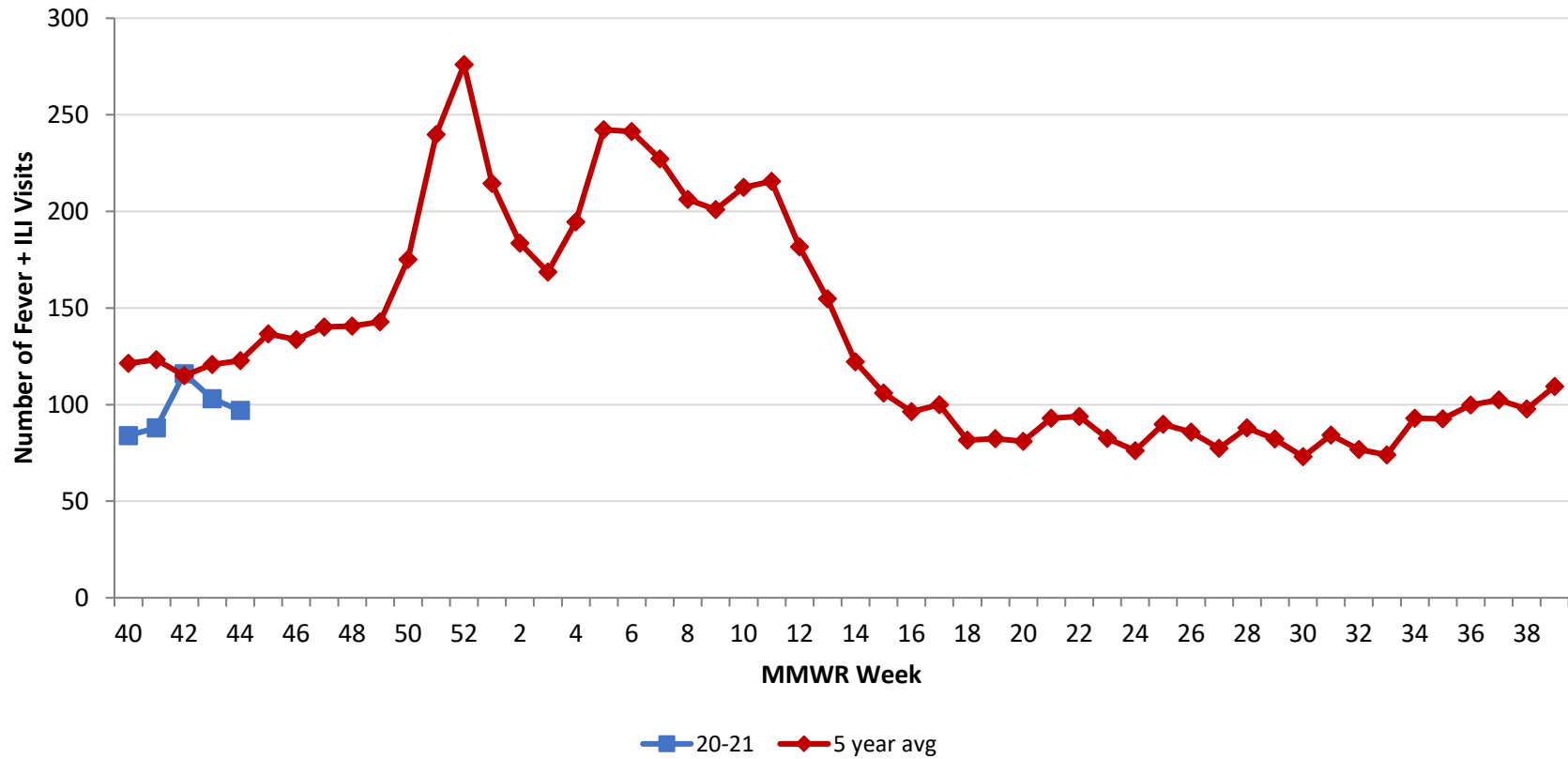
***Presumed recovered is defined as cases with a symptom onset date >21 days prior who are not deceased.

†Current Case Rate – current cases (symptom onset past 21 days) per 100,000.

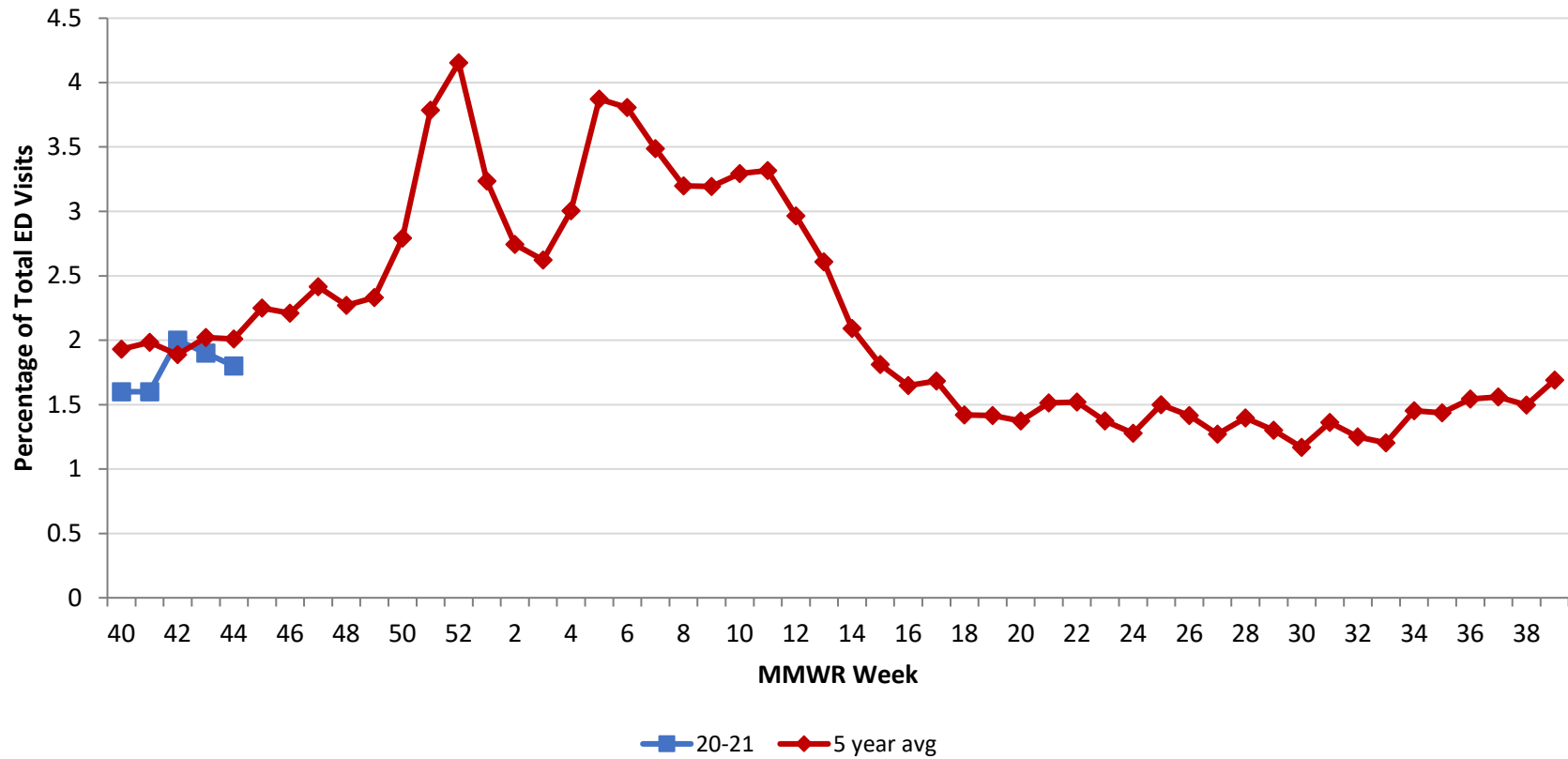
Source: EpiCenter Syndromic Surveillance, Health Monitoring Systems



Montgomery County Fever + ILI Specified ED Visits by MMWR Week
with 5-Year Baseline Average; 2020-2021



Montgomery County Fever + ILI Specified ED Visits (% of Total Visits) by MMWR Week with 5-Year Baseline Average; 2020-2021



# Total Visits		
MMWR Week	20-21	5-Year Average
40	5,397	6,293.0
41	5,586	6,213.8
42	5,664	6,091.6
43	5,442	5,980.2
44		6,109.2
45		6,072.2
46		6,047.6
47		5,804.2
48		6,191.8
49		6,125.0
50		6,274.6
51		6,335.0
52		6,644.2
1		6,628.0
2		6,689.2
3		6,427.5
4		6,476.0
5		6,257.4
6		6,340.2
7		6,516.2
8		6,447.2
9		6,294.6
10		6,448.6
11		6,500.6
12		6,126.4
13		5,935.4
14		5,844.6
15		5,853.0
16		5,850.4
17		5,942.4
18		5,744.0
19		5,820.6
20		5,902.8
21		6,142.4
22		6,166.6
23		6,020.4

# Fever + ILI Visits		
MMWR Week	20-21	5-Year Average
40	84	121.4
41	88	123.2
42	116	115.0
43	97	120.8
44		122.8
45		136.6
46		133.6
47		140.2
48		140.6
49		142.8
50		175.2
51		239.8
52		276.0
1		214.4
2		183.6
3		168.6
4		194.6
5		242.2
6		241.4
7		227.2
8		206.2
9		201.0
10		212.4
11		215.6
12		181.6
13		154.8
14		122.2
15		106.0
16		96.4
17		100.0
18		81.6
19		82.4
20		81.0
21		93.0
22		93.8
23		82.6

% Fever + ILI Visits		
MMWR Week	20-21	5-Year Average
40	1.6	1.9
41	1.6	2.0
42	2.0	1.9
43	1.8	2.0
44		2.0
45		2.2
46		2.2
47		2.4
48		2.3
49		2.3
50		2.8
51		3.8
52		4.2
1		3.2
2		2.7
3		2.6
4		3.0
5		3.9
6		3.8
7		3.5
8		3.2
9		3.2
10		3.3
11		3.3
12		3.0
13		2.6
14		2.1
15		1.8
16		1.6
17		1.7
18		1.4
19		1.4
20		1.4
21		1.5
22		1.5
23		1.4