



Montgomery County COVID-19 Summary as of 3/19/2021

Note. Data and graphics can be viewed via the COVID-19 dashboard:

<https://www.phdmc.org/coronavirus-updates/323-covid-19-dashboard>

Overall:

- **The current case rate (per 100,000) dropped 22% in the last week (from 205 on 3/12/21 to 159 on 3/19/21).**
- Montgomery County's average daily COVID-19 case count has dropped 9% in the past week (from 51 cases per day on 3/5/21 to 46 cases per day on 3/12/21).

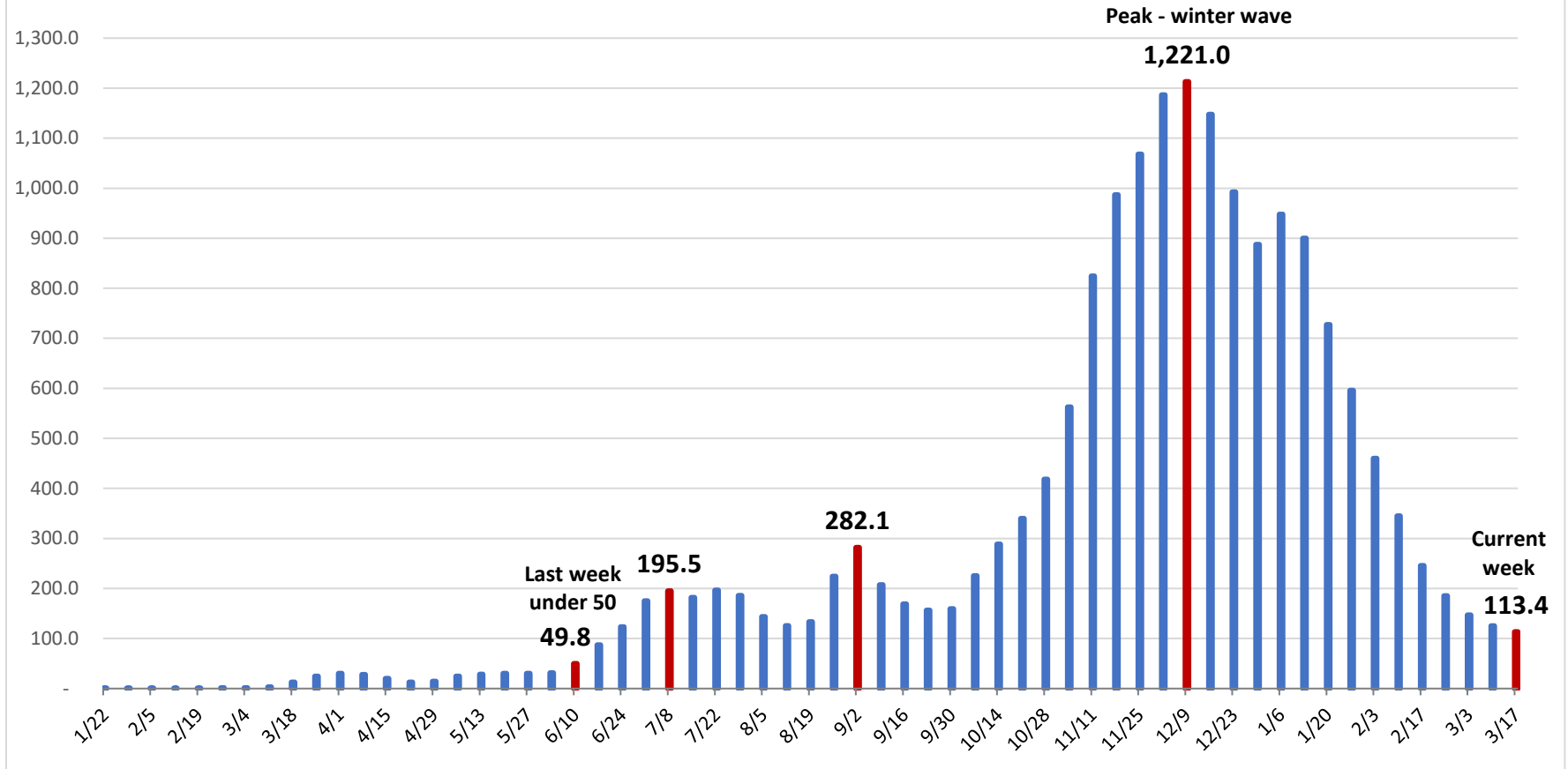
Montgomery County COVID-19 Outbreak and School Data:

- Montgomery County currently has 196 COVID-19 outbreak investigations open at various long-term care facilities, businesses, and schools.
- **Five outbreak investigations opened in the past week.**
- Montgomery County has a total of 2,264 cases associated with schools (1,346 students, 918 staff). **Of the 2,264 cases, 1% (22 cases – 17 students, 5 staff) were reported in the past week, a 24% decrease from last week.**

Demographics:

- Asian/Pacific Islanders have the highest current case rate (141.9) but the lowest number of current cases (20). Whites have the second highest current case rate (133.1) and the highest number of current cases (525 cases), **a 12% decrease in the last week (151.6; 598).**
- Whites have the highest overall rate (7,153.1).
- **Race is unknown for 17% of total cases and 9% of current cases.**
- The age group 35-39 years has the highest current case rate (241.6).
- Individuals 70 years and older account for 13% of total cases, 44% of total hospitalizations, and 77% of total deaths.

COVID-19 Cases per 100,000 Residents in Preceding Two Weeks, Montgomery County



- The two-week incidence rate of cases (113.4) is the lowest it has been since the week of 6/17/2020 (87.1).

Source: COVID-19 Dashboard, Ohio Department of Health