



Montgomery County COVID-19 Summary as of 4/16/2021

Note. Data and graphics can be viewed via the COVID-19 dashboard:

<https://www.phdmc.org/coronavirus-updates/323-covid-19-dashboard>

Overall:

- **The current case rate (per 100,000) increased 19% in the last week (from 224 on 4/9/21 to 266 on 4/16/21).**
- **Montgomery County's average daily COVID-19 case count has increased 20% in the past week (from 64 cases per day on 4/2/21 to 77 cases per day on 4/9/21).**

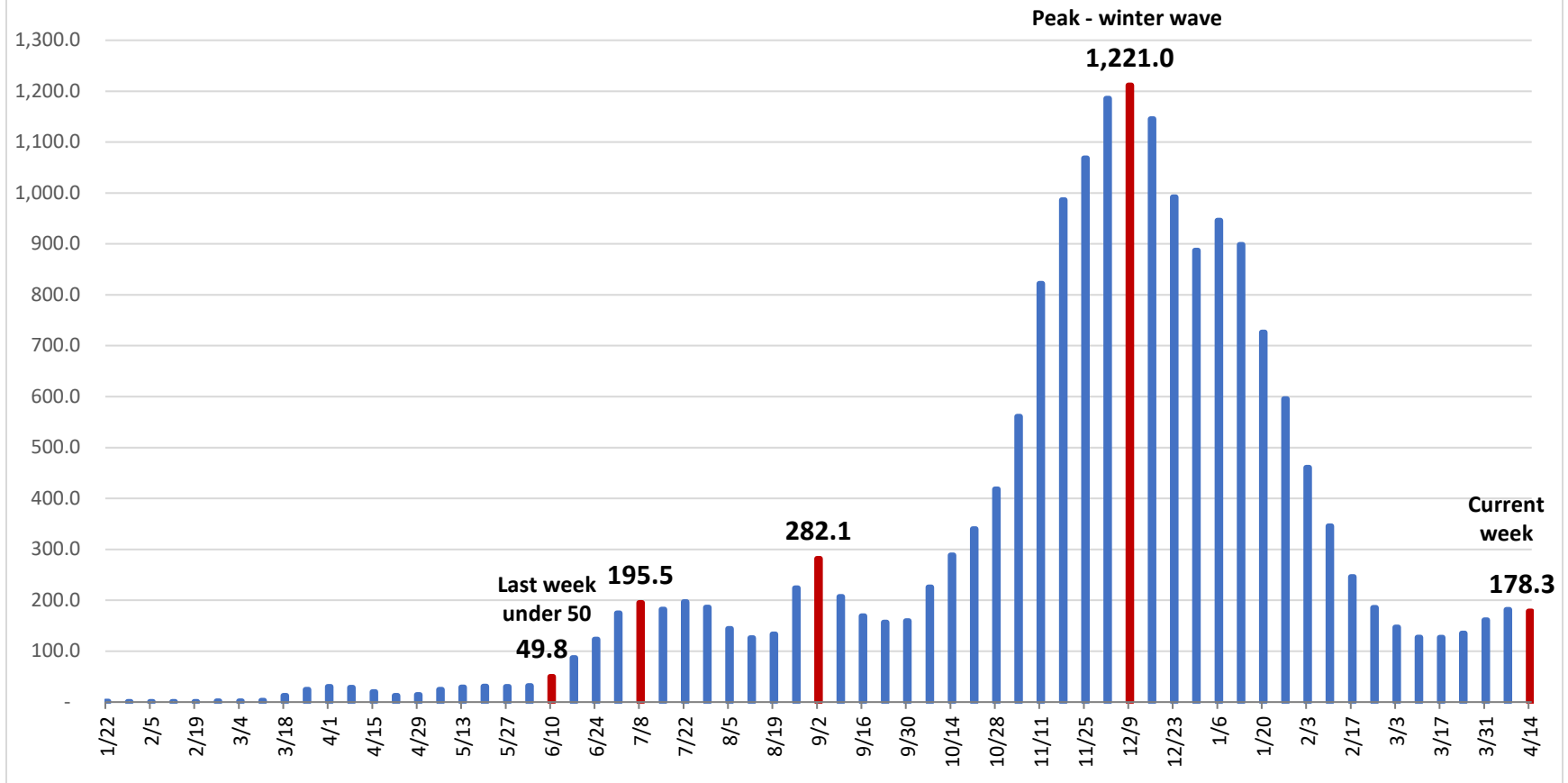
Montgomery County COVID-19 Outbreak and School Data:

- Montgomery County currently has 197 COVID-19 outbreak investigations open at various long-term care facilities, businesses, and schools.
- **Two outbreak investigations opened in the past week.**
- Montgomery County has a total of 2,386 cases associated with schools (1,449 students, 937 staff). **Of the 2,386 cases, 1.2% (29 cases – 25 students, 4 staff) were reported in the past week, a 4% increase from last week.**

Demographics:

- Blacks/African Americans have the highest current case rate (286.2) and the second highest number of current cases (346) – **a 25% increase from last week (228.3; 276)**. Whites have the second highest current case rate (186.0) and the highest number of current cases (734 cases), **a 13% increase in the last week (165.3; 652)**.
- Whites have the highest overall rate (7,430.4).
- **Current cases have increased by 14% in the last week (from 1,118 on 4/8/21 to 1,277 on 4/15/21).**
- **Race is unknown for 16% of total cases and 9% of current cases.**
- The age group 19-24 years has the highest current case rate (491.8) – a 13% increase from last week.
- Individuals 70 years and older account for 13% of total cases, 43% of total hospitalizations, and 77% of total deaths.

COVID-19 Cases per 100,000 Residents in Preceding Two Weeks, Montgomery County



- The two-week incidence rate of cases (178.3) has increased by 41% in the past month (from 126.8 on 3/17).

Source: COVID-19 Dashboard, Ohio Department of Health