



Montgomery County COVID-19 Summary as of 5/7/2021

Note. Data and graphics can be viewed via the COVID-19 dashboard:

<https://www.phdmc.org/coronavirus-updates/323-covid-19-dashboard>

Overall:

- The current case rate (per 100,000) decreased 27% in the last week (from 242 on 4/30/21 to 215 on 5/7/21).
- Montgomery County's average daily COVID-19 case count has decreased 13% in the past week (from 71 cases per day on 4/23/21 to 62 cases per day on 4/30/21).

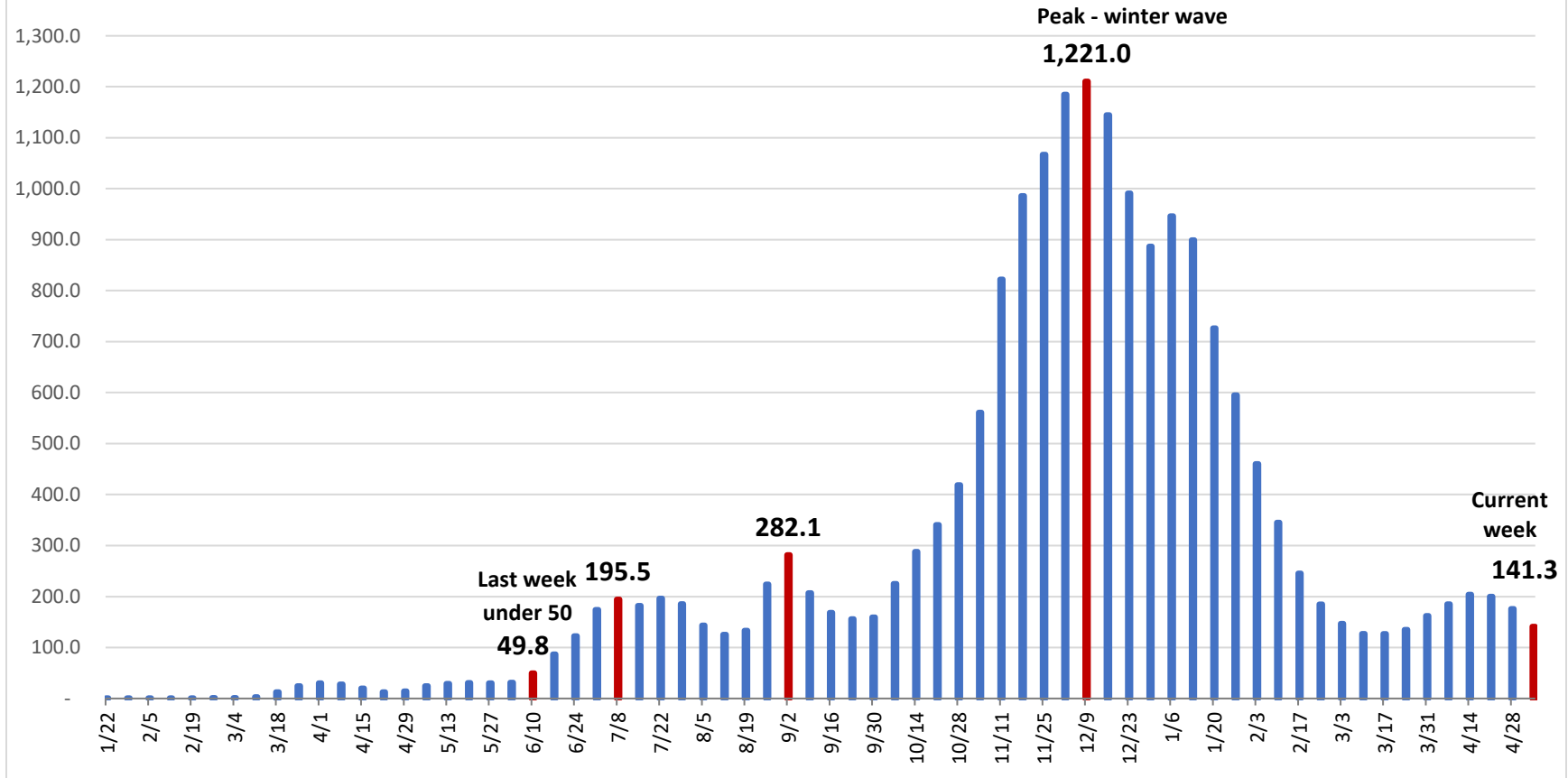
Montgomery County COVID-19 Outbreak and School Data:

- Montgomery County currently has 210 COVID-19 outbreak investigations open at various long-term care facilities, businesses, and schools.
- **Five outbreak investigation opened in the past week.**
- Montgomery County has a total of 2,577 cases associated with schools (1,621 students, 956 staff). **Of the 2,577 cases, 2.7% (70 cases – 63 students, 7 staff) were reported in the past week, a 17% increase from last week.**

Demographics:

- Blacks/African Americans have the highest current case rate (317.6) and the second highest number of current cases (384) – **a 3% decrease from last week (325.9; 394)**. Asians have the second highest current case rate (234.1), and Whites highest number of current cases (570 cases), **a 15% decrease in the last week (671)**.
- Blacks have the highest overall rate (7,797.5).
- **Current cases have decreased by 16% in the last week (from 1,335 on 4/29/21 to 1,117 on 5/6/21).**
- **Race is unknown for 16% of total cases and 7% of current cases.**
- The age group 30-34 years has the highest current case rate (326.1).
- Individuals 70 years and older account for 13% of total cases, 43% of total hospitalizations, and 77% of total deaths.

COVID-19 Cases per 100,000 Residents in Preceding Two Weeks, Montgomery County



- The two-week incidence rate of cases (141.3) has decreased by 20% in the past week (from 176 on 4/28).

Source: COVID-19 Dashboard, Ohio Department of Health