



Montgomery County COVID-19 Summary as of 5/25/2021

Note. Data and graphics can be viewed via the COVID-19 dashboard:

<https://www.phdmc.org/coronavirus-updates/323-covid-19-dashboard>

Overall:

- The current case rate (per 100,000) decreased 32% in the last week (from 199 on 5/14/21 to 136 on 5/23/21).
- Montgomery County's average daily COVID-19 case count has decreased 26% in the past week (from 58 cases per day on 5/7/21 to 43 cases per day on 5/16/21).

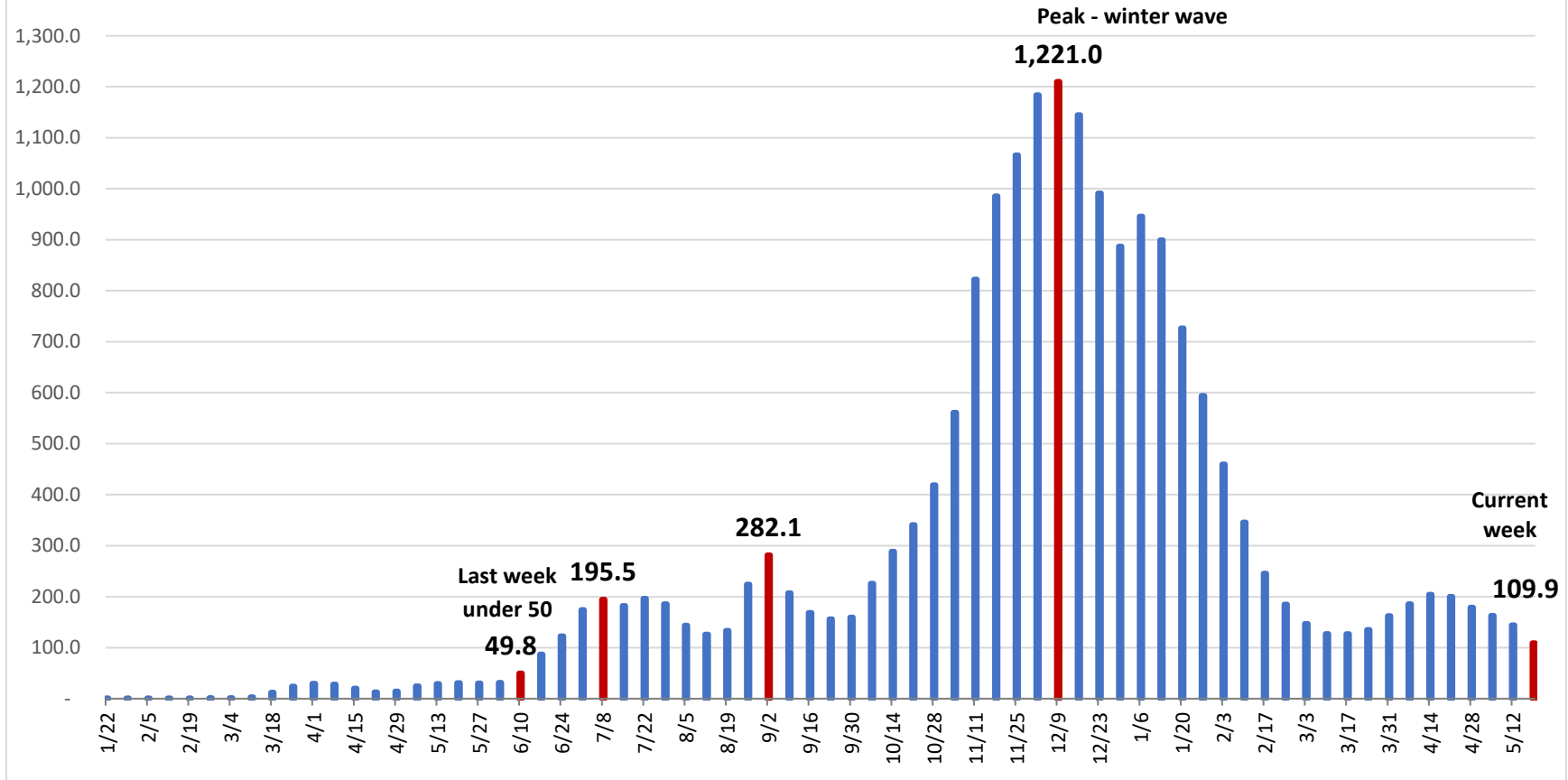
Montgomery County COVID-19 Outbreak and School Data:

- Montgomery County currently has 216 COVID-19 outbreak investigations open at various long-term care facilities, businesses, and schools.
- **One outbreak investigation opened in the past week.**
- Montgomery County has a total of 2,705 cases associated with schools (1,731 students, 974 staff). **Of the 2,705 cases, 1% (23 cases – 19 students, 4 staff) were reported in the past week, a 62% decrease from last week.**

Demographics:

- Blacks/African Americans have the highest current case rate (244.8) and the second highest number of current cases (296) – a **13% decrease from last week (281.2; 340)**. Asians have the second highest current case rate (106.4), and Whites highest number of current cases (386 cases), a **21% decrease in the last week (488)**.
- Blacks have the highest overall rate (8,039.9).
- **Current cases have decreased by 18% in the last week (from 996 on 5/16/21 to 819 on 5/23/21).**
- **Race is unknown for 16% of total cases and 8% of current cases.**
- The age group 15-18 years has the highest current case rate (238.5).
- Individuals 70 years and older account for 13% of total cases, 43% of total hospitalizations, and 77% of total deaths.

COVID-19 Cases per 100,000 Residents in Preceding Two Weeks, Montgomery County



- The two-week incidence rate of cases (110) has decreased by 24% in the past week (from 144 on 5/12).

Source: COVID-19 Dashboard, Ohio Department of Health