



Montgomery County COVID-19 Summary as of 6/4/2021

Note. Data and graphics can be viewed via the COVID-19 dashboard:

<https://www.phdmc.org/coronavirus-updates/323-covid-19-dashboard>

Overall:

- The current case rate (per 100,000) decreased 32% in the last week (from 140 on 5/27/21 to 95 on 6/4/21).
- Montgomery County's average daily COVID-19 case count has decreased 24% in the past week (from 38 cases per day on 5/20/21 to 29 cases per day on 5/28/21).

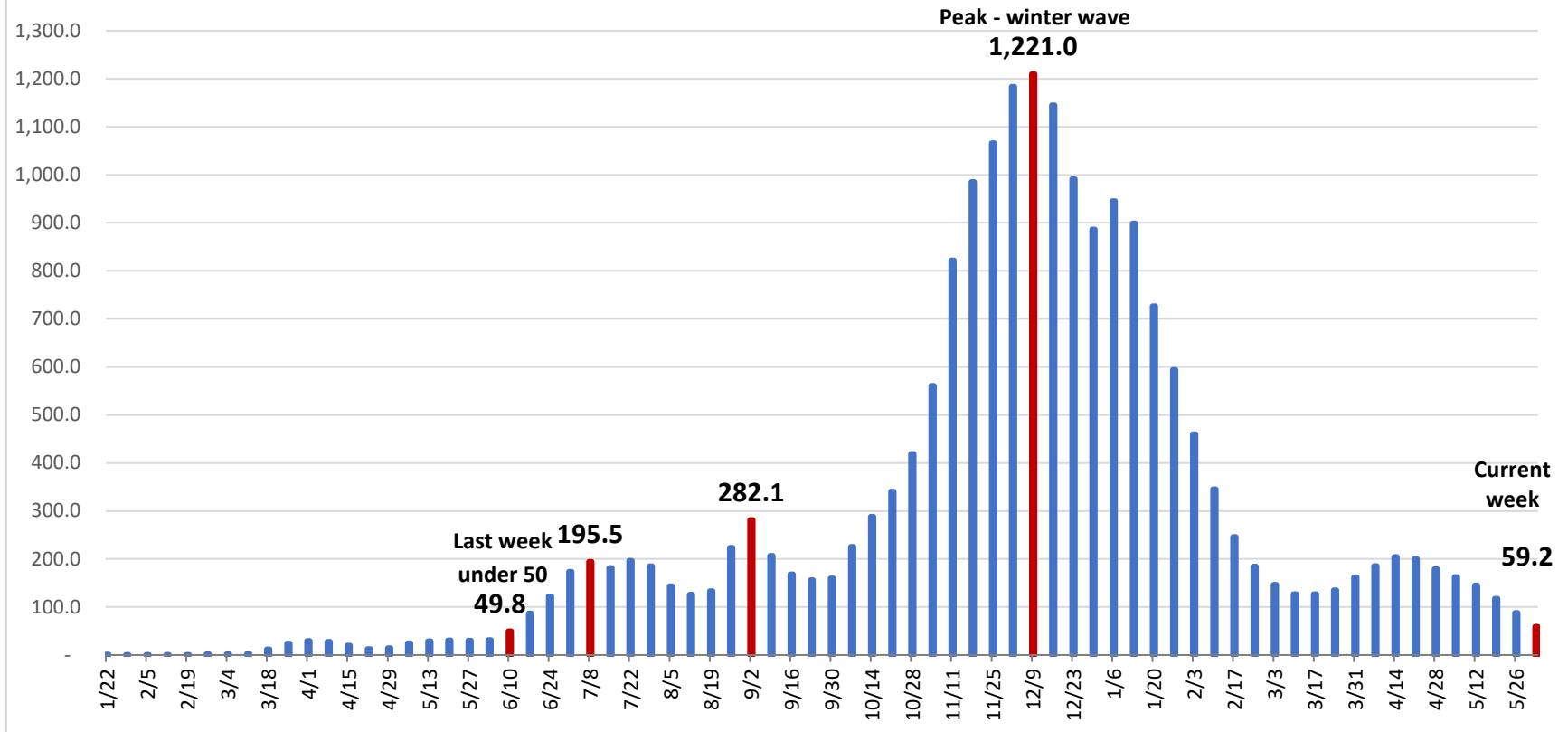
Montgomery County COVID-19 Outbreak and School Data:

- Montgomery County currently has 198 COVID-19 outbreak investigations open at various long-term care facilities, businesses, and schools.
- **Zero outbreak investigations opened in the past week and 19 investigations closed.**
- Montgomery County has a total of 2,723 cases associated with schools (1,746 students, 977 staff). **Of the 2,723 cases, <1% (18 cases – 15 students, 3 staff) were reported in the past week, a 22% decrease from last week.**

Demographics:

- Blacks/African Americans have the highest current case rate (152.2) and the second highest number of current cases (184) – **a 38% decrease from last week (244.8; 296)**. Asians have the second highest current case rate (70.9), and Whites highest number of current cases (249 cases), **a 35% decrease in the last week (386)**.
- Blacks have the highest overall rate (8,129.2).
- **Current cases have decreased by 39% in the last week (from 819 on 5/23/21 to 501 on 6/3/21).**
- **Race is unknown for 16% of total cases and 7% of current cases.**
- The age group 19-24 years has the highest current case rate (152.4).
- Individuals 70 years and older account for 12% of total cases, 42% of total hospitalizations, and 76% of total deaths.

COVID-19 Cases per 100,000 Residents in Preceding Two Weeks, Montgomery County



- The two-week incidence rate of cases (59) has decreased by 33% in the past week (from 88 on 5/26).

Source: COVID-19 Dashboard, Ohio Department of Health