



Montgomery County COVID-19 Summary as of 6/11/2021

Note. Data and graphics can be viewed via the COVID-19 dashboard:

<https://www.phdmc.org/coronavirus-updates/323-covid-19-dashboard>

Overall:

- **The current case rate (per 100,000) decreased 24% in the last week (from 95 on 6/4/21 to 72 on 6/10/21).**
- **Montgomery County's average daily COVID-19 case count has decreased 31% in the past week (from 29 cases per day on 5/28/21 to 20 cases per day on 6/4/21).**

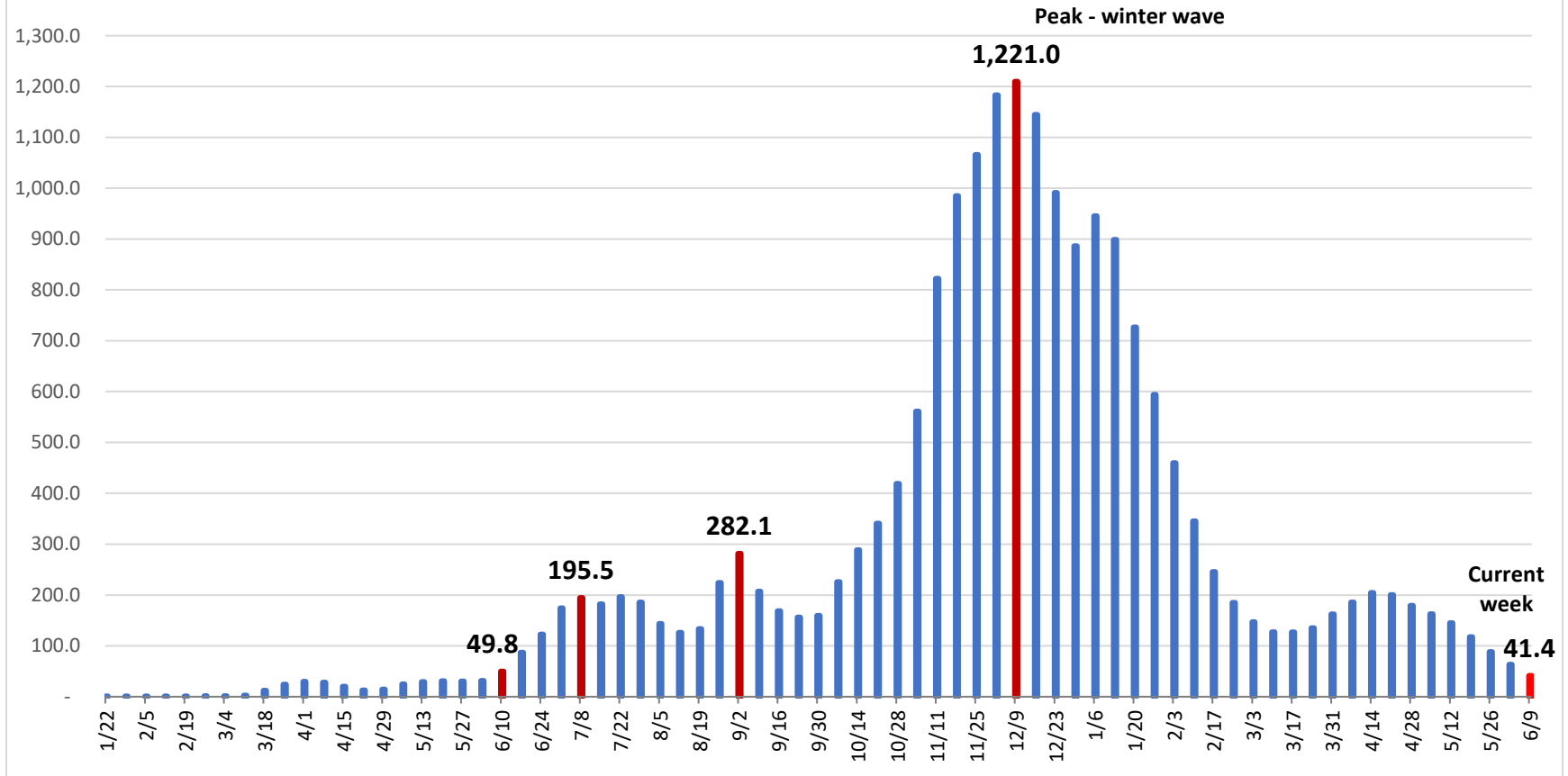
Montgomery County COVID-19 Outbreak and School Data:

- Montgomery County currently has 113 COVID-19 outbreak investigations open at various long-term care facilities, businesses, and schools.
- **Two outbreak investigations opened in the past week and 84 investigations closed.**
- Montgomery County has a total of 2,726 cases associated with schools (1,749 students, 977 staff). **Of the 2,726 cases, <1% (3 cases – 3 students, 0 staff) were reported in the past week, an 83% decrease from last week.**

Demographics:

- Blacks/African Americans have the highest current case rate (110.8) and the second highest number of current cases (134) – a 27% decrease from last week. Whites have the second highest current case rate (51.5) and highest number of current cases (203 cases).
- Blacks have the highest overall rate (8,163.1).
- **Current cases have decreased by 24% in the last week (from 501 on 6/3/21 to 383 on 6/10/21).**
- **Race is unknown for 16% of total cases and 7% of current cases.**
- The age group 19-24 years has the highest current case rate (125.9).
- Individuals 70 years and older account for 12% of total cases, 42% of total hospitalizations, and 76% of total deaths.

COVID-19 Cases per 100,000 Residents in Preceding Two Weeks, Montgomery County



- The two-week incidence rate of cases (41) has decreased by 35% in the past week (from 63 on 6/2).

Source: COVID-19 Dashboard, Ohio Department of Health