



Montgomery County COVID-19 Summary as of 6/18/2021

Note. Data and graphics can be viewed via the COVID-19 dashboard:

<https://www.phdmc.org/coronavirus-updates/323-covid-19-dashboard>

Overall:

- The current case rate (per 100,000) decreased 47% in the last two weeks (from 95 on 6/4/21 to 51 on 6/18/21).
- Montgomery County's average daily COVID-19 case count has decreased 45% in the past two weeks (from 29 cases per day on 5/28/21 to 16 cases per day on 6/11/21).

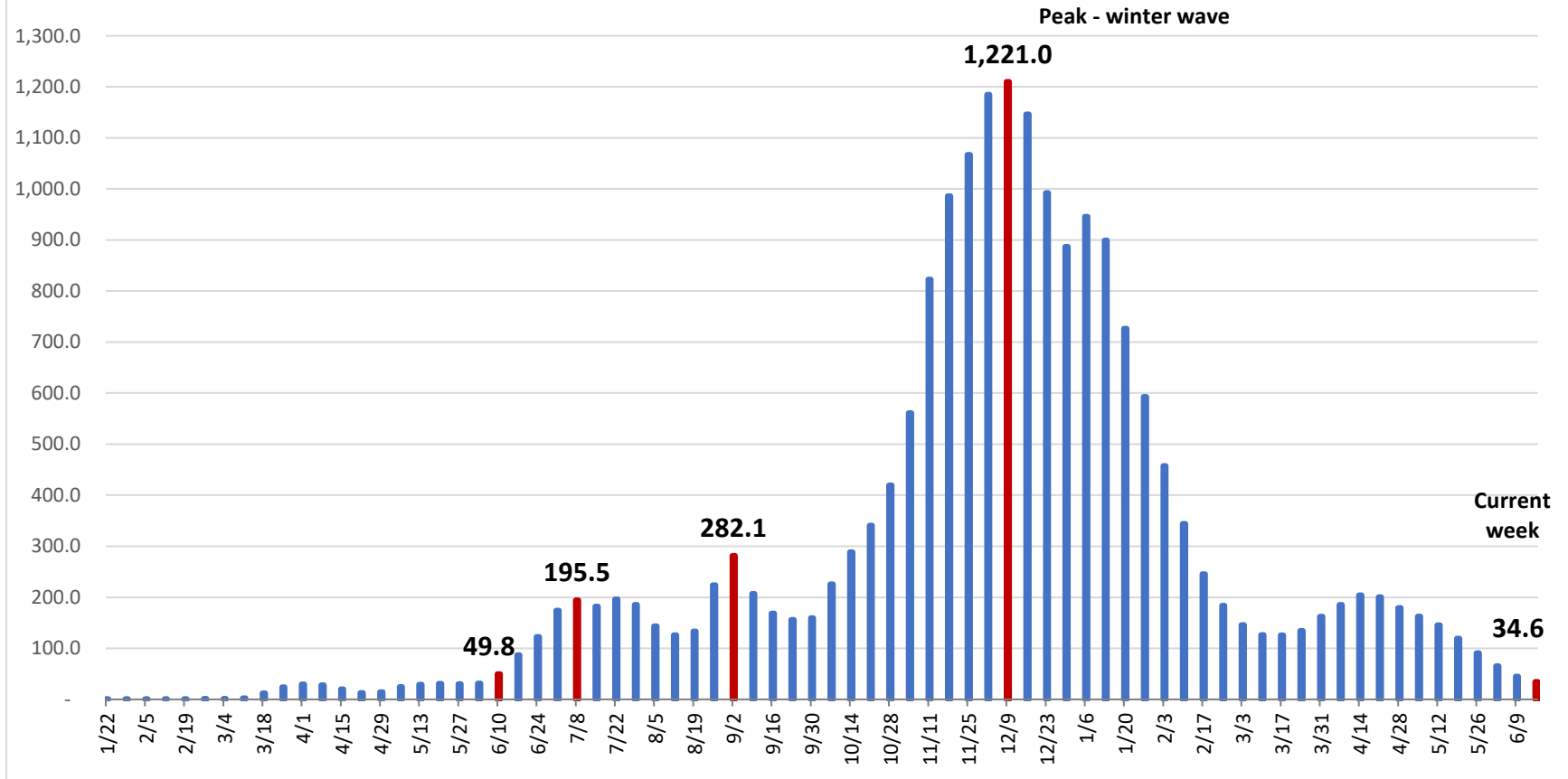
Montgomery County COVID-19 Outbreak and School Data:

- Montgomery County currently has 113 COVID-19 outbreak investigations open at various long-term care facilities, businesses, and schools.
- **Two outbreak investigations opened in the past week and 85 investigations closed.**
- Montgomery County has a total of 2,728 cases associated with schools (1,750 students, 978 staff). **Of the 2,728 cases, <1% (1 case – 0 students, 1 staff) were reported in the past week.**

Demographics:

- Blacks/African Americans have the highest current case rate (67.0) and the second highest number of current cases (81) – a **56% decrease in the last two weeks (152.2; 184)**. Whites have the highest number of current cases (163 cases), a **35% decrease in the last two weeks (249)**.
- Blacks have the highest overall rate (8,186.3).
- **Current cases have decreased by 44% in the last two weeks (from 501 on 6/3/21 to 279 on 6/17/21).**
- **Race is unknown for 16% of total cases and 7% of current cases.**
- The age group 19-24 years has the highest current case rate (92.7).
- Individuals 70 years and older account for 12% of total cases, 42% of total hospitalizations, and 76% of total deaths.

COVID-19 Cases per 100,000 Residents in Preceding Two Weeks, Montgomery County



- The two-week incidence rate of cases (35) has decreased by 23% in the past week (from 45 on 6/9), and is the lowest it has been since 6/3/2020 (32).

Source: COVID-19 Dashboard, Ohio Department of Health