



Montgomery County COVID-19 Summary as of 6/25/2021

Note. Data and graphics can be viewed via the COVID-19 dashboard:

<https://www.phdmc.org/coronavirus-updates/323-covid-19-dashboard>

Overall:

- The current case rate (per 100,000) decreased 22% in the last week (from 51 on 6/18/21 to 40 on 6/25/21).
- Montgomery County's average daily COVID-19 case count has decreased 38% in the past week (from 16 cases per day on 6/11/21 to 10 cases per day on 6/18/21).

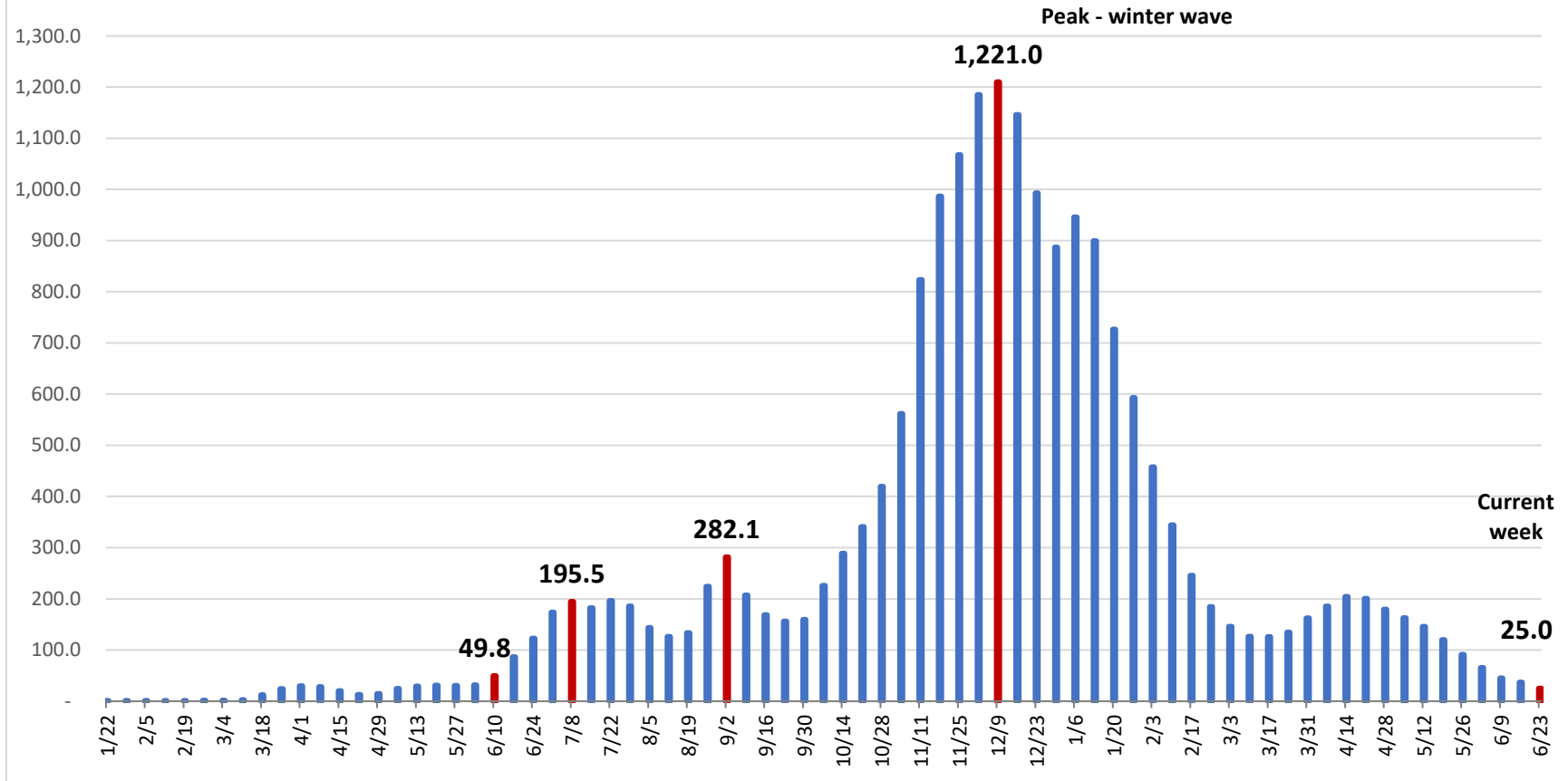
Montgomery County COVID-19 Outbreak and School Data:

- Montgomery County currently has 24 COVID-19 outbreak investigations open at various long-term care facilities, businesses, and schools.
- **Zero outbreak investigations opened in the past week and 89 investigations closed.**
- Montgomery County has a total of 2,730 cases associated with schools (1,751 students, 979 staff). **Of the 2,730 cases, <1% (2 cases – 1 student, 1 staff) were reported in the past week.**

Demographics:

- Blacks/African Americans have the highest current case rate (40.5) and the second highest number of current cases (49) – **a 40% decrease in the last week (67.0; 81)**. Whites have the highest number of current cases (130 cases), **a 20% decrease in the last two weeks (163)**.
- Blacks have the highest overall rate (8,202.8).
- **Current cases have decreased by 24% in the last two weeks (from 279 on 6/17/21 to 212 on 6/24/21).**
- **Race is unknown for 16% of total cases and 8% of current cases.**
- The age group 19-24 years has the highest current case rate (68.9)
- Individuals 70 years and older account for 12% of total cases, 42% of total hospitalizations, and 76% of total deaths.

COVID-19 Cases per 100,000 Residents in Preceding Two Weeks, Montgomery County



- The two-week incidence rate of cases (25) has decreased by 32% in the past week (from 37 on 6/16), and it is the lowest it has been since 5/6/2020 (24.6).

Source: COVID-19 Dashboard, Ohio Department of Health