



COVID-19 Weekly Summary Montgomery County, As of 7/16/2021

Current COVID-19 Cases:

- In the last week, current COVID-19 cases **increased** (by 55%) from 164 to 255.
- The current overall case rate (48 per 100,000) **increased** by 35% from 31 per 100,000. This is the first current case rate increase since April 10, 2021.
- Blacks have the highest current case rate (**57.9**) followed by Whites (**35.7**).
- Whites have the highest current case count (**141**) followed by Blacks (**70**).
- Individuals 19 to 24yrs have the **highest** current case rate (95 per 100,000)

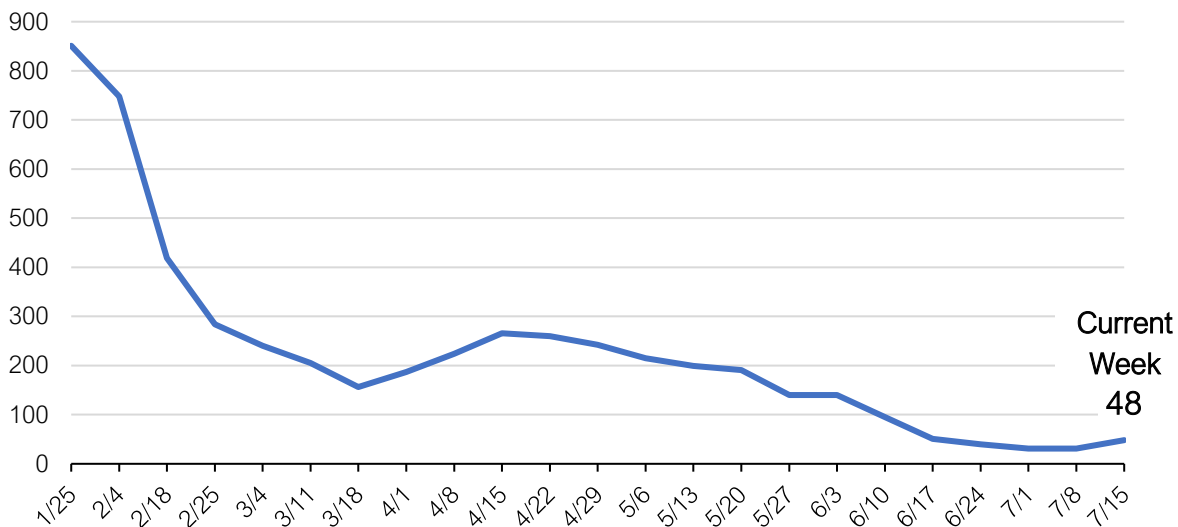
Table 1. Current COVID-19 Cases by Race, Montgomery, as of 7/15/2021

Race	Current Cases	Current Rate	Population
Asian or Pacific Islander	3	21.3	14,098
Black	70	57.9	120,910
White	141	35.7	394,540
Other	9	NA	NA
Unknown	32	NA	NA
Total	255	48.0	531,687

Current COVID-19 cases include those with symptom onset within the 21-days prior to the report week (as of 6/24/2021).

*Case counts are subject to change as new and/or updated information is received from the Ohio Department of Health
Source: Ohio Disease Reporting System

Figure 1. Weekly Current COVID-19 Case Rate per 100,000 Population, Montgomery, as of 7/15/2021*



*Case rates are subject to change as new and/or updated information is received from the Ohio Department of Health
Source: Ohio Disease Reporting System

Overall COVID-19 Cases:

- The number of reported COVID-19 cases (109) **decreased** (by 14%) from 128 last week
- The number of reported COVID-19 hospitalizations (9) **decreased** (by 25%) from 12 last week
- There were **zero** COVID-19 deaths reported
- The 7-day average daily case count (19) **increased** (by 19%) from 16 cases per day last week
- Individuals 70 years and older account for **12%** of total cases, **42%** of total hospitalizations, and **76%** of total deaths.

Table 2. COVID-19 Cases, Hospitalizations, and Deaths, Montgomery, as of 7/16/2021*

	Total Cases	Total Hospitalizations	Total Deaths
Montgomery	59,965	4,815	1,059

*Counts are subject to change as new and/or updated information is received from the Ohio Department of Health
 Source: Ohio Department of Health, COVID-19 Dashboard

Figure 2. Weekly COVID-19 Cases, Montgomery, as of 7/16/2021*

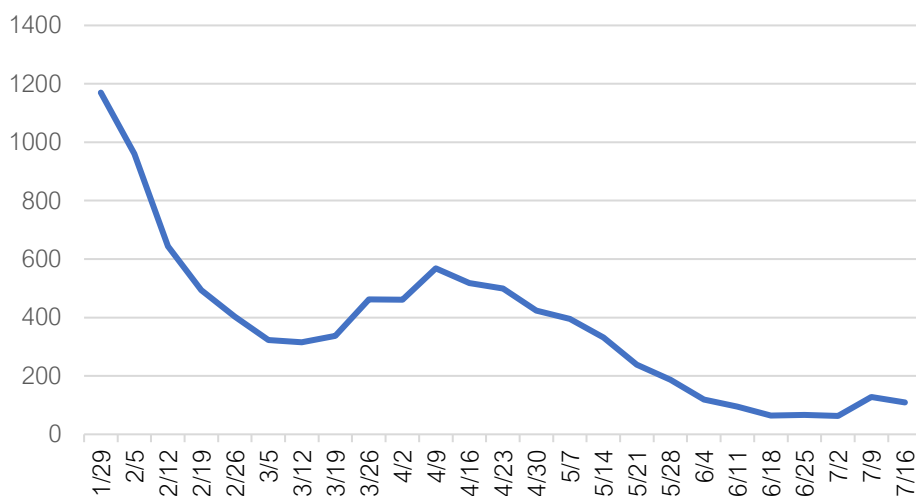
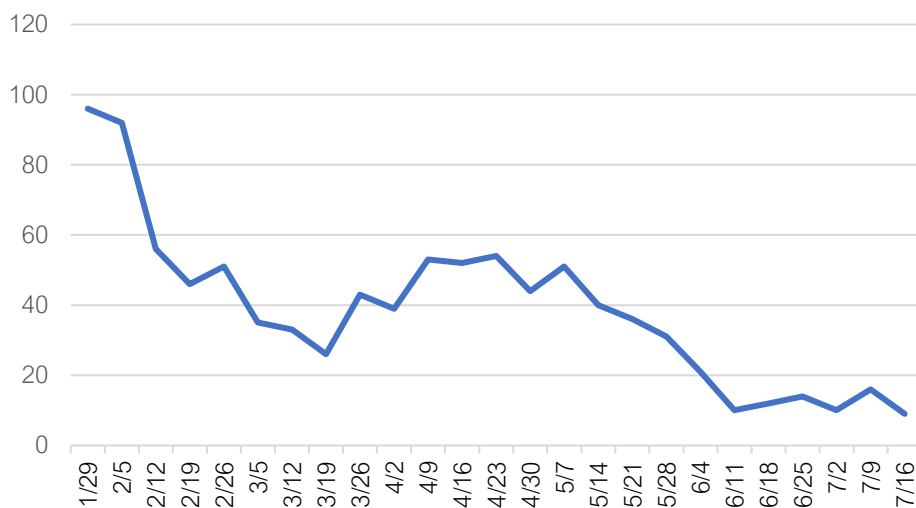


Figure 3. Weekly COVID-19 Hospitalizations, Montgomery, as of 7/16/2021*

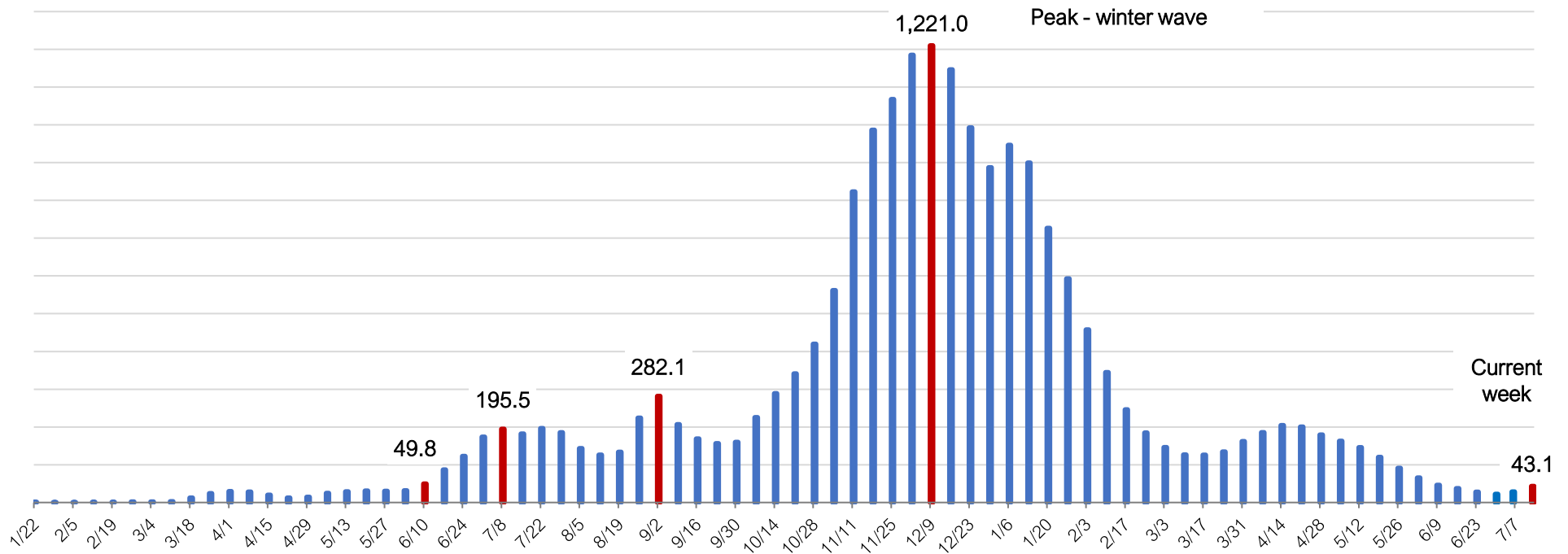


*Counts are subject to change as new and/or updated information is received from the Ohio Department of Health
 Source: Ohio Department of Health, COVID-19 Dashboard

Overall COVID-19 Case Rate:

- Hispanics (8662.3) and Blacks (8427.5) have the **highest** overall COVID-19 case rates.
- The two-week incident rate of cases **increased** (by 34%) from 27.6 per 100,000 to 43.1.
- This is the first two-week incident case rate increase since 4/14/2021.
- Since July 1, the two-week incident rate of cases has **increased** by **48%** (from 22.2 to 43.1)

Figure 2. Two-Week COVID-19 Case Rate per 100,000 Residents, Montgomery, as of 7/16/2021

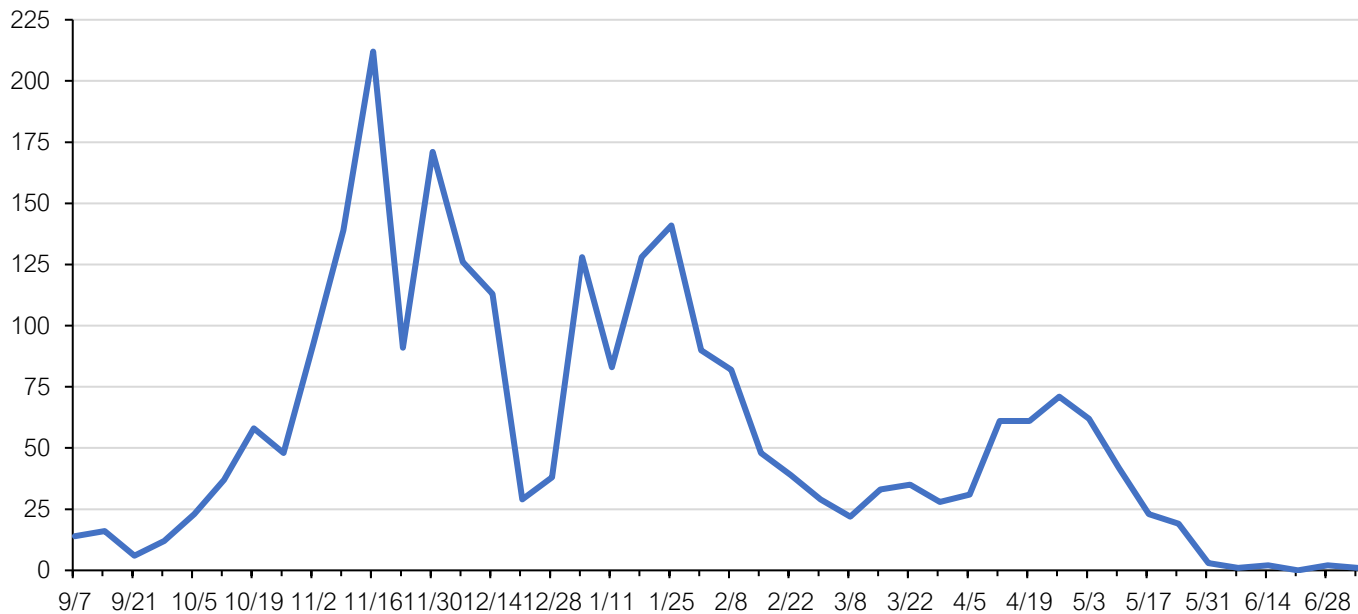


*Rates are subject to change as new and/or updated information is received from the Ohio Department of Health
 Source: Ohio Department of Health, COVID-19 Dashboard

K-12 School Cases:

- Montgomery County has a total of **2,733** COVID-19 cases associated with schools – students account for most cases (1,752 students, 981 staff).
- There was **1** staff case reported in the last week.
- K-12 cases have **declined** since April 2021.
- Only **5** cases were reported in June, which is a significant **decrease** (by 97%) from May (149).

Figure 3. K-12 COVID-19 Cases by Report Week, as of 7/5/2021



COVID-19 Outbreaks:

- Montgomery County has had **284** COVID-19 outbreaks with **10,285** confirmed and probable cases.
- Outbreak cases account for **19%** of all Montgomery County COVID-19 cases (10,285 of 52,929).
- Most outbreaks (**24%** or **69**) occurred within long-term care facilities, followed by K-12 schools and/or colleges, universities, and technical institutes (**17%** or **47**).
- Montgomery County has **11** COVID-19 outbreak investigations open at various long-term care facilities, businesses, correctional institutes, K-12 schools, and a non-profit organization.
- There were **3** outbreak investigations opened in the past week and **zero** investigations closed.

Note: Additional data and graphics can be viewed via the COVID-19 dashboard:

<https://www.phdmc.org/coronavirus-updates/323-covid-19-dashboard>