



American Indian and Alaska Native Population

Montgomery County, Ohio 2010



Public Health
Prevent. Promote. Protect.
Dayton & Montgomery County

October 2013

American Indian & Alaska Native

Facts about the American Indian & Alaska Native (AI/AN) population

- This racial group includes peoples having origins from any of the original peoples of North, South, and Central America, and who maintain tribal affiliation or community attachment.
- There are 566 federally recognized tribes, more than 100 state recognized tribes, and many that are not state or federally recognized.
- Each tribe has its own culture, beliefs, and practices.



U.S. Demographic and Socioeconomic Facts

- According to the 2010 U.S. Census, 1.7% of the U.S. population is AI/AN.¹
- In 2010, the reported population of the Cherokee, Navajo, Choctaw, Mexican American Indian, Chippewa, Sioux, Apache, and Blackfeet tribes was greater than 100,000.¹
- From 2006-2010, 26.4% of AI/ANs were living below the poverty level.¹
- The percentage of AI/AN who did not complete high school was 127.3% greater than Whites.¹
- Factors that contribute to poorer health outcome for AI/ANs include geographic isolation, cultural barriers, inadequate sewage disposal, and poverty.²

U.S. Health Facts

- The Indian Health Service (IHS) is responsible for providing federal health services to AI/AN populations, but those who do not reside on a reservation have limited access to IHS services.²
- 29.2% of AI/AN lack health insurance (2010).¹
- Compared to other racial/ethnic populations, AI/AN populations:²
 - highest rate of motor vehicle related deaths (2007)
 - one of the highest rate of suicides (2007)
 - second highest death rate due to drug overdoses (2007)
 - highest prevalence of binge drinking (2009)
 - consume the highest number of alcoholic drinks during binge drinking (2009)
 - second highest infant mortality rate (2006)
 - highest prevalence of youth aged 12-17 who currently smoke



Public Health
Prevent. Promote. Protect.
Dayton & Montgomery County

U.S. Ten Leading Causes of Death for American Indians and Alaska Natives (2009)³

1. Heart Disease
2. Cancer
3. Unintentional Injuries
4. Diabetes
5. Chronic Liver Disease and Cirrhosis
6. Chronic Lower Respiratory Diseases
7. Stroke
8. Suicide
9. Influenza and Pneumonia
10. Kidney Disease



Additional Resources

Dayton Council on Health Equity

<http://www.phdmc.org/dche>

CDC Health Disparities & Inequalities Report (CHDIR)

<http://www.cdc.gov/minorityhealth/CHDIRReport.html>

CDC Minority Health: American Indian & Alaska Native Populations

<http://www.cdc.gov/minorityhealth/populations/REMP/aian.html>

Indian Health Service

<https://www.ihs.gov/>

Miami Valley Council for Native Americans

<http://www.tmvcna.org/>

U.S. National Library of Medicine - American Indian Health

<http://americanindianhealth.nlm.nih.gov/>

Sources:

1. U.S. Census Bureau. <http://www.census.gov/>

2. CDC Health Disparities & Inequalities Report (CHDIR) <http://www.cdc.gov/minorityhealth/populations/REMP/aian.html>

3. National Center for Health Statistics, Deaths - Final data. <http://www.cdc.gov/nchs/index.htm>

American Indian & Alaska Native Population by Zip Code

Table

Chart

Map

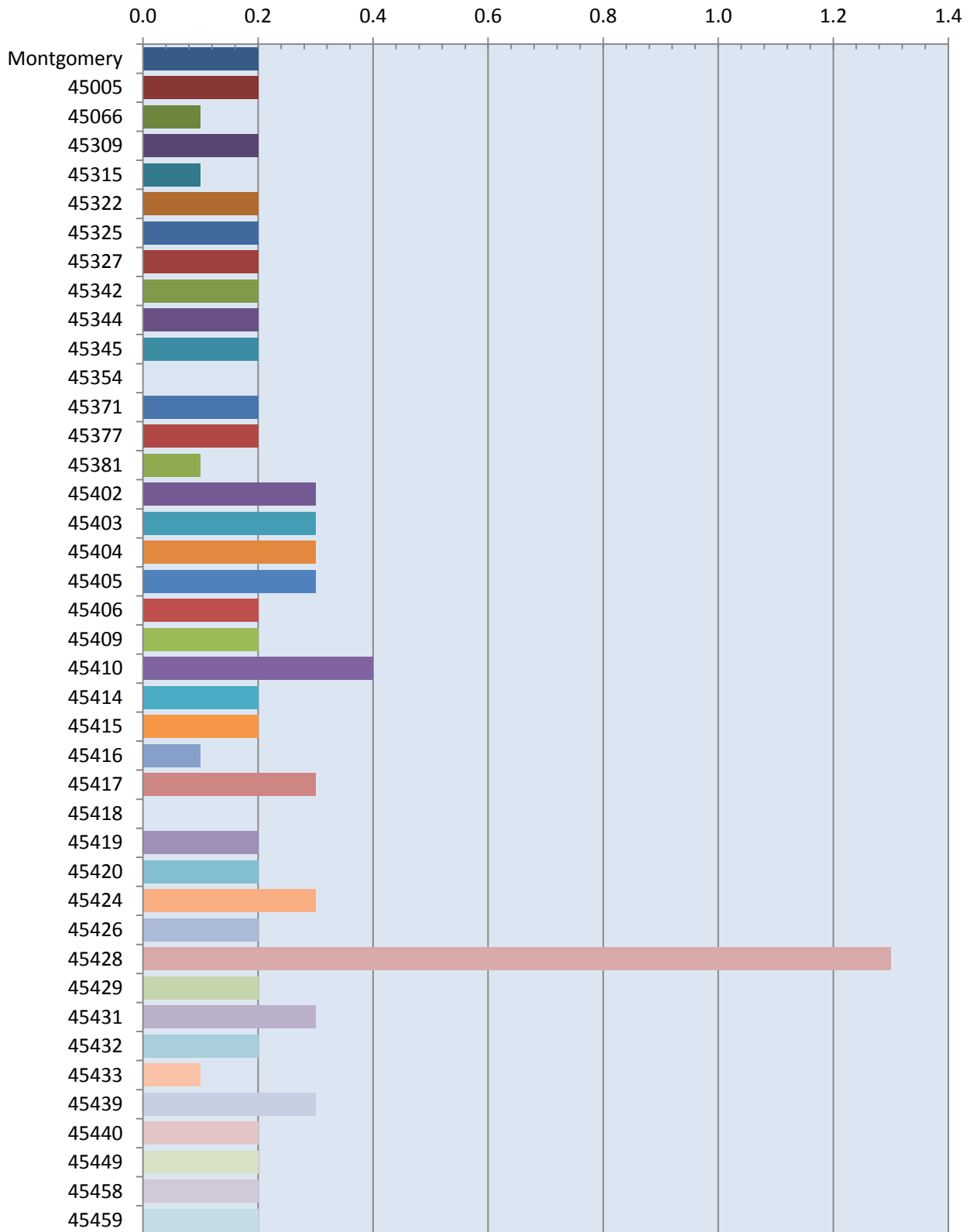
Population: Percent of population by race, 2010

Zip Codes	County Population	White	Black	American Indian & Alaska Native	Asian	Other
Montgomery County	535,135	73.9	20.9	0.2	1.7	3.3
45005	29,963	96.8	0.9	0.2	0.5	1.6
45066	23,839	92.8	2.0	0.1	3.1	2.0
45309	12,123	97.3	0.6	0.2	0.6	1.3
45315	4,377	77.4	17.8	0.1	1.8	2.9
45322	21,447	86.4	9.7	0.2	1.1	2.6
45325	2,647	97.8	0.5	0.2	0.2	1.3
45327	8,917	97.7	0.9	0.2	0.4	0.8
45342	36,784	87.9	5.3	0.2	4.1	2.5
45344	16,955	93.7	0.5	0.2	0.4	5.2
45345	6,144	96.1	1.6	0.2	0.3	1.8
45354	642	97.5	1.2	0.0	0.3	1.0
45371	18,333	96.5	0.6	0.2	1.0	1.7
45377	15,215	93.2	2.8	0.2	1.5	2.3
45381	5,509	97.7	0.5	0.1	0.3	1.4
45402	11,420	23.4	72.8	0.3	0.5	3.0
45403	15,006	81.5	10.0	0.3	0.7	7.5
45404	10,833	82.3	12.1	0.3	0.8	4.5
45405	18,948	29.4	65.4	0.3	0.6	4.3
45406	21,914	12.3	84.0	0.2	0.2	3.3
45409	12,868	91.3	4.0	0.2	1.6	2.9
45410	15,339	84.1	7.9	0.4	1.0	6.6
45414	21,055	81.6	14.4	0.2	0.9	2.9
45415	12,631	65.2	30.1	0.2	1.2	3.3
45416	5,740	26.6	69.8	0.1	0.2	3.3
45417	31,281	16.7	79.9	0.3	0.1	3.0
45418	1,351	78.2	16.7	0.0	1.0	4.1
45419	15,159	93.5	2.0	0.2	2.0	2.3
45420	25,438	92.4	3.5	0.2	1.1	2.8
45424	49,930	79.1	13.1	0.3	2.9	4.6
45426	15,239	21.6	74.8	0.2	0.4	3.0
45428	240	62.5	33.8	1.3	0.4	2.0
45429	25,885	93.9	2.1	0.2	1.6	2.2
45431	26,315	84.5	5.4	0.3	5.7	4.1
45432	15,288	92.8	2.8	0.2	1.6	2.6
45433	2,011	80.2	10.3	0.1	3.0	6.4
45439	10,000	85.6	7.8	0.3	1.7	4.6
45440	20,734	90.7	4.2	0.2	2.4	2.5
45449	18,175	84.8	10.5	0.2	1.4	3.1
45458	29,880	86.0	4.8	0.2	6.1	2.9
45459	27,749	91.4	3.2	0.2	2.9	2.3

Source: U.S. Census, 2010

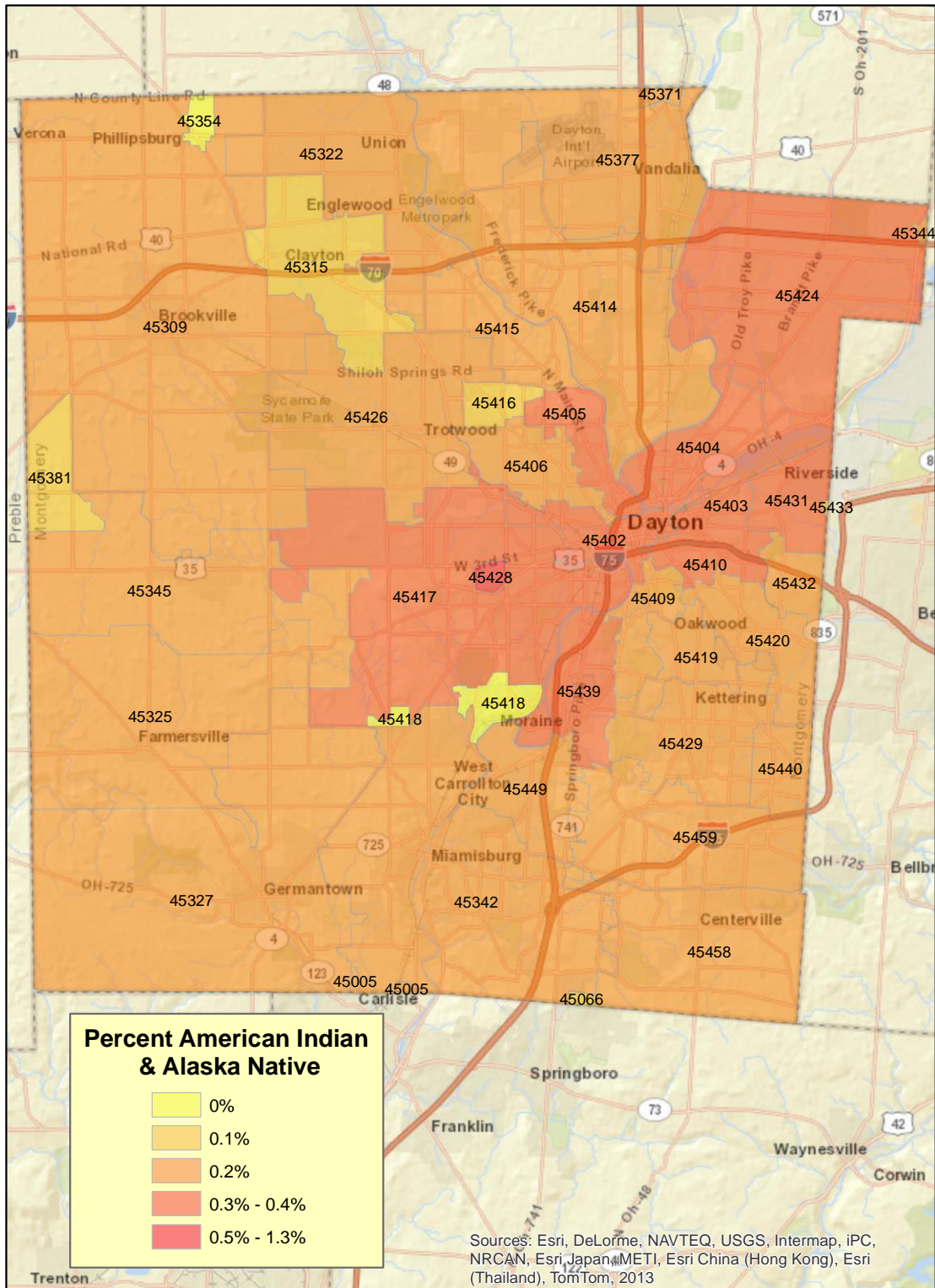
Population: Percent of population by race, American Indian & Alaska Native, 2010

Percent



Source: U.S. Census, 2010

American Indian & Alaska Native, 2010



0 4 8 16 Miles

Prepared by: Public Health - Dayton & Montgomery County
Epidemiology Department

Contact Information

Public Health - Dayton & Montgomery County

Epidemiology Department

Reibold Building

117 South Main Street

Dayton, Ohio 45422-1280

Phone: 937-496-6533

Fax: 937-496-7468

Website: <http://www.phdmc.org/health-reports>

Email: epi@phdmc.org



Public Health
Prevent. Promote. Protect.
Dayton & Montgomery County