



Employment, Income, Poverty, & Health

Montgomery County, Ohio



Public Health
Prevent. Promote. Protect.
Dayton & Montgomery County

September 2013

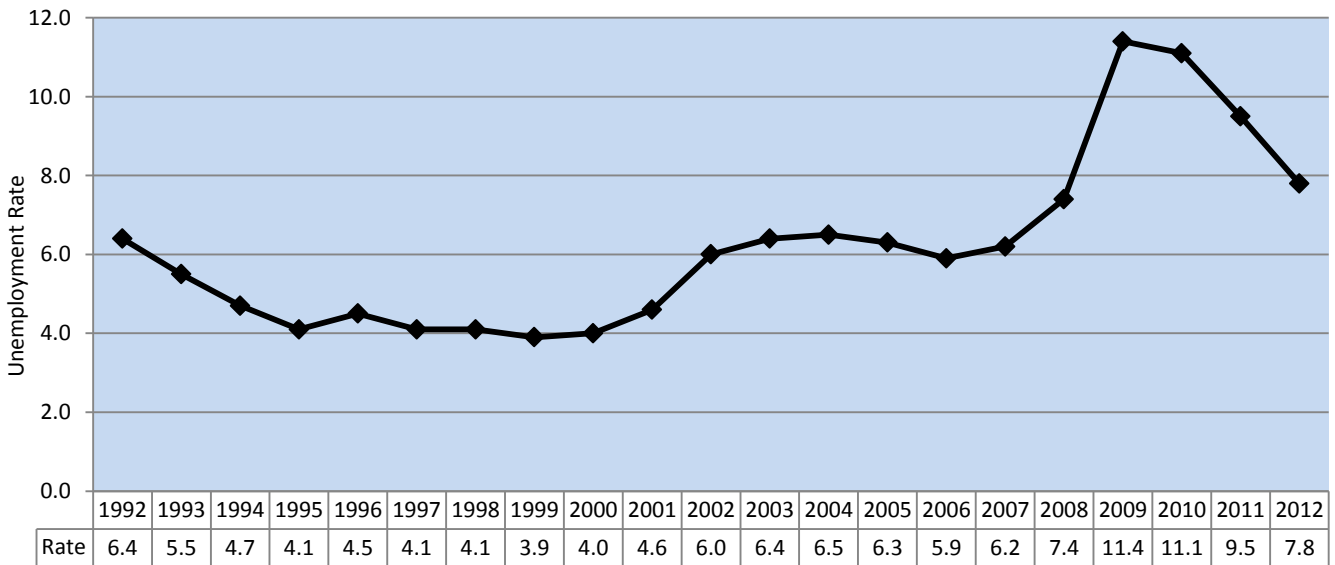
Employment, Income, Poverty, & Health in Montgomery County, OH

Employment¹

- Workers in 2012 were more likely to have jobs in management, business, science, and arts (32.6%); sales and office (27.3%); and service (19.6%).
- In 2012, 80.9% of workers were wage or salaried employees in private industry, 13.8% worked for the government, and 5.3% were self-employed.



Unemployment Rate², 1992-2012
Montgomery County, OH



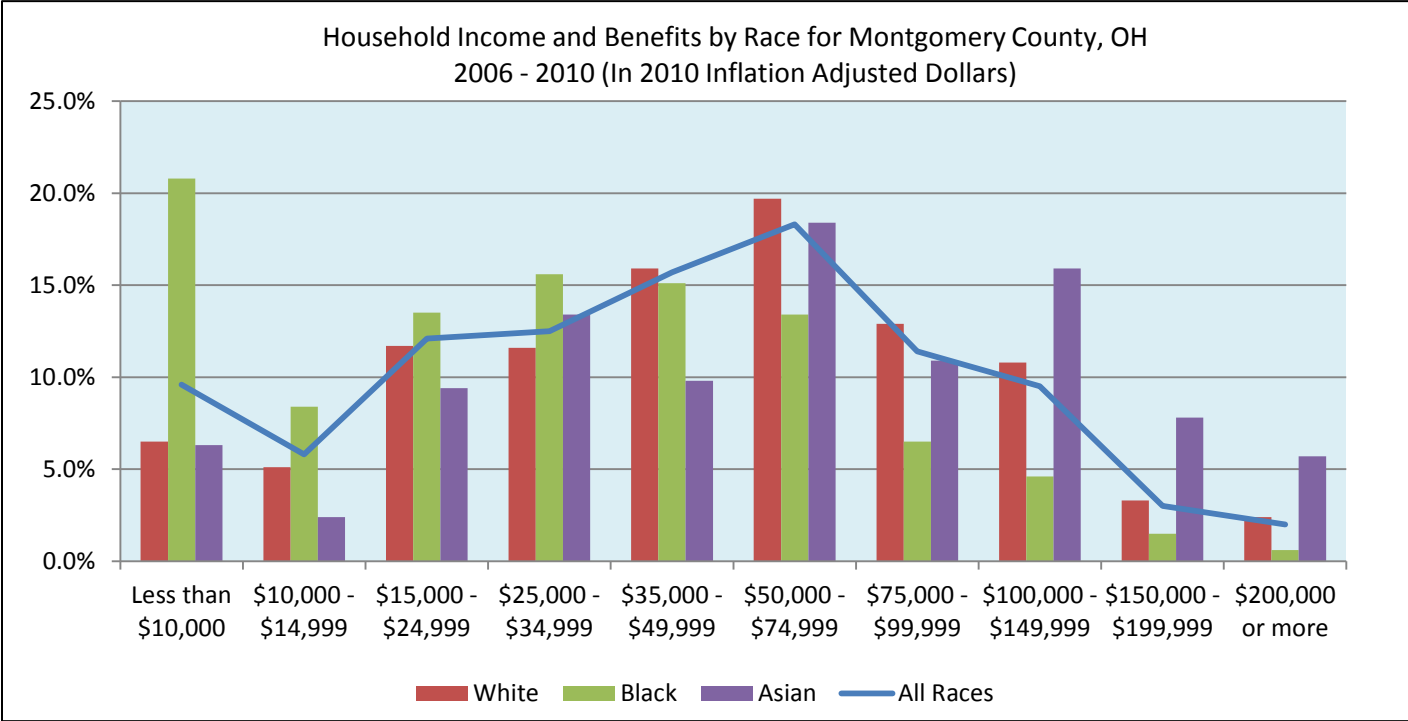
Source: U.S. Department of Labor. Bureau of Labor Statistics



Public Health
Prevent. Promote. Protect.
Dayton & Montgomery County

Income¹

- Median household income for all of Montgomery County was \$43,965 (2006-2010).
- For the White population, median income was \$49,057, for Blacks it was \$29,823, and for Asians it was \$61,730.



Source: U.S. Census, 2006-2010 American Community Survey

Poverty¹

- The percent of families whose income fell below the poverty level in 2012 was 13.4%.
- By race, 9.2% of White families and 28.9% of Black families lived in poverty.
- In single mother households with a child under the age of 5, 49.4% of families fell below the poverty level. (White - 41.4%, Black - 64.3%)
- 27.7% of children under the age of 18 lived in poverty.



Health

According to 2012 estimates, 12.7% of Montgomery County residents do not have health insurance (White 11.5%, Black 16.2%).¹

Health Indicators by Income Level³, 2011-2012

	\$25,000 or less	More than \$25,000
Fair or Poor Health	26.9%	13.8%
Unable to See a Doctor Due to Cost	32.6%	10.4%
Obese or Overweight	61.7%	64.9%
Current Smoker	34.3%	17.7%
Exercise Regularly	69.0%	78.4%
Have Diabetes	16.5%	11.2%
Had a Heart Attack	6.4%	4.4%
Have Coronary Heart Disease	16.5%	11.2%
Diagnosed with a Depressive Disorder	27.1%	16.1%
Diagnosed with an Anxiety Disorder	15.8%	13.7%
Had a PSA Test*	26.7%	46.5%
Had a Pap Test [†]	82.2%	76.1%
Had a Mammogram [‡]	74.4%	70.7%
Had a Colonoscopy [§]	56.7%	73.7%

Source: Behavioral Risk Factor Surveillance System (BRFSS) Survey, 2011-2012

Notes:

* Males aged 40 or older that have had a PSA test in the past 2 years

† Women aged 18 or older that have had a pap test in the past 3 years

‡ Women aged 40 or older that have had a mammogram in the past 2 years

§ Aged 50 or older that have had a sigmoidoscopy or colonoscopy

Sources

1. U.S. Census Bureau. <http://www.census.gov/>
2. U.S. Department of Labor. Bureau of Labor Statistics. <http://www.bls.gov/home.htm>
3. Centers for Disease Control and Prevention. Behavioral Risk Factor Surveillance System (BRFSS) Survey. <http://www.cdc.gov/brfss/>

Median Household Income by Zip Code

Table

Chart

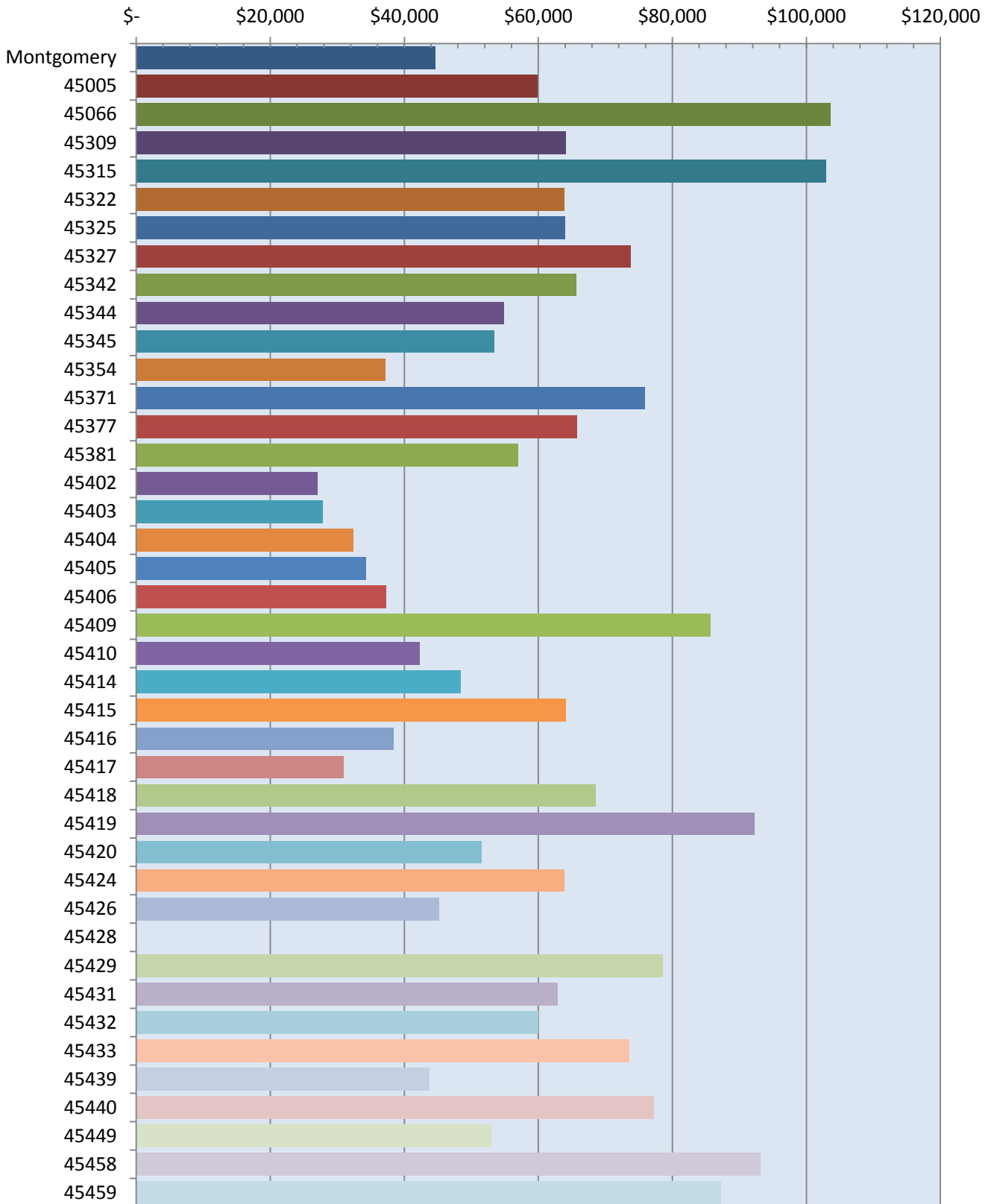
Map

Median Household Income: Income (dollars) in 2011 inflation adjusted dollars

Zip Codes	Total Households	Median Income
Montgomery County	223,546	\$44,585
45005	11,795	\$59,893
45066	8,150	\$103,626
45309	4,957	\$64,115
45315	1,468	\$102,879
45322	8,734	\$63,821
45325	891	\$63,938
45327	3,481	\$73,832
45342	15,296	\$65,601
45344	6,202	\$54,892
45345	2,498	\$53,480
45354	321	\$37,159
45371	7,005	\$75,867
45377	6,510	\$65,775
45381	2,221	\$56,961
45402	4,853	\$27,054
45403	6,046	\$27,793
45404	4,539	\$32,373
45405	8,642	\$34,264
45406	9,371	\$37,281
45409	2,910	\$85,709
45410	6,530	\$42,246
45414	8,931	\$48,362
45415	5,420	\$64,153
45416	2,244	\$38,415
45417	12,576	\$30,978
45418	398	\$68,542
45419	6,382	\$92,207
45420	11,904	\$51,589
45424	19,143	\$63,902
45426	6,570	\$45,154
45428	0	\$-
45429	12,150	\$78,613
45431	11,059	\$62,868
45432	6,106	\$59,944
45433	691	\$73,520
45439	4,347	\$43,800
45440	9,124	\$77,263
45449	8,165	\$53,022
45458	11,883	\$93,107
45459	12,226	\$87,270

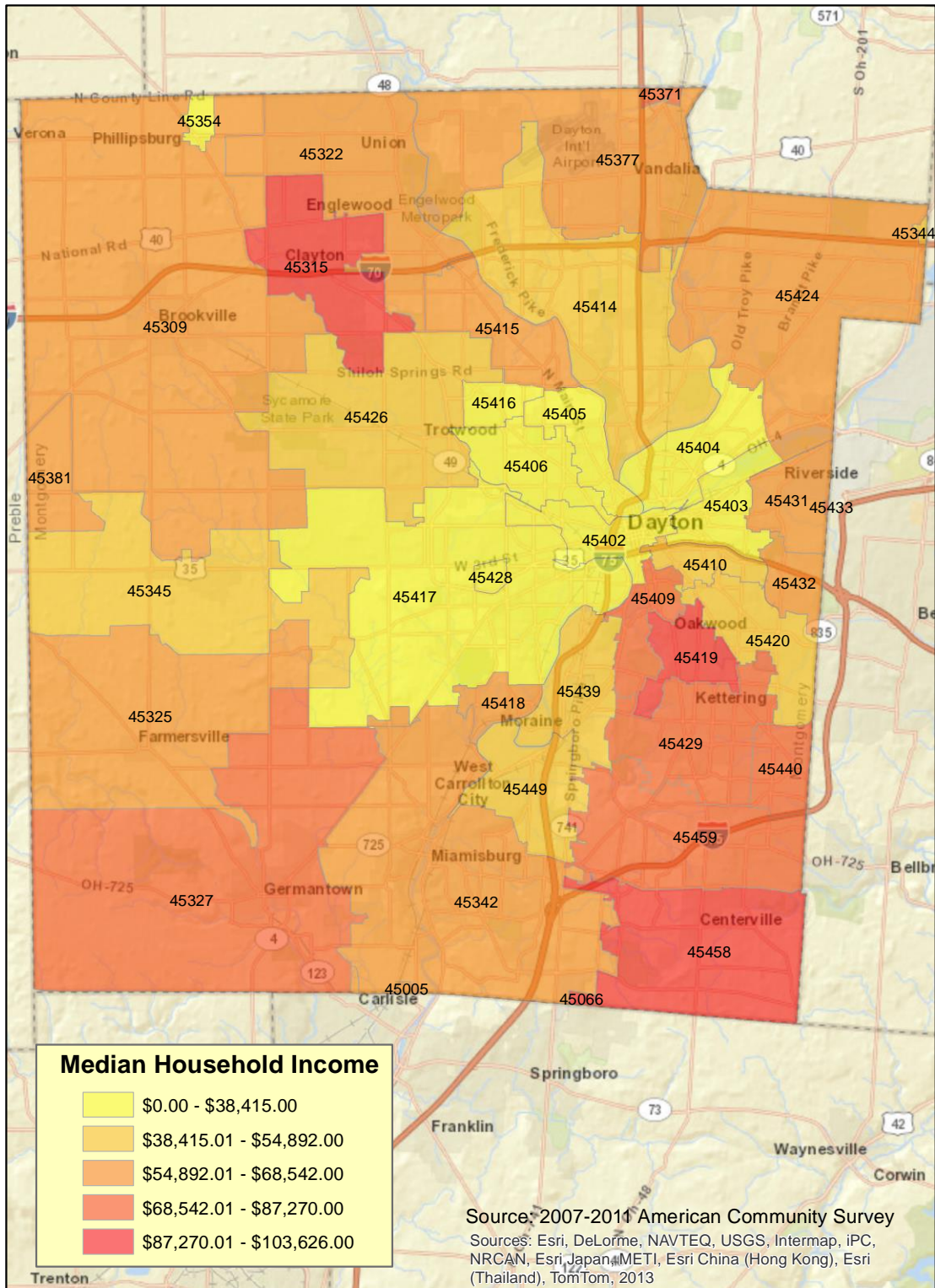
Source: U.S. Census. 2007-2011 American Community Survey

Median Household Income: Income (dollars) in 2011 inflation adjusted dollars



Source: U.S. Census. 2007-2011 American Community Survey

Median Household Income, 2007-2011



0 4 8 16 Miles

Prepared by: Public Health - Dayton & Montgomery County
Epidemiology Department

Contact Information

Public Health - Dayton & Montgomery County

Epidemiology Department

Reibold Building

117 South Main Street

Dayton, Ohio 45422-1280

Phone: 937-496-6533

Fax: 937-496-7468

Website: <http://www.phdmc.org/health-reports>

Email: epi@phdmc.org



Public Health
Prevent. Promote. Protect.
Dayton & Montgomery County