



Dayton &
Montgomery
County

West Central Ohio (WCO) Seasonal Influenza Activity Report MMWR Week 6 2/2/2020 – 2/8/2020

Weekly Influenza Activity Summary:

Montgomery County (Week 6): There were 37 influenza-associated hospitalizations reported during week 6 (a 3% decrease); influenza hospitalizations are slightly above baseline figures. *Fever + ILI and Constitutional* emergency department visits increased from week 5 to week 6 and remained above baseline. Overall, influenza activity in Montgomery County decreased during week 6 but remains high.

West Central Ohio Region (Week 6): Influenza hospitalizations are elevated; there were 99 hospitalizations during week 6. Fifty-nine percent (59%) of regional influenza-associated hospitalizations occurred in individuals 5-64 years this flu season. Overall, regional influenza activity remains elevated.

Ohio (Week 5): Current Activity Level - Widespread

Increased ILI in at least half of the regions AND recent (within the past 3 weeks) lab confirmed influenza in the state. The Ohio Department of Health (ODH) has reported the following positive results from flu specimens sent to the ODH laboratory (through 2/1/20): (428) Total [subtyped] positives; (195) A/pdmH1N1; (15) A/H3N2; (218) Influenza B. ODH reported 4,465 influenza-associated hospitalizations so far during the 2019-2020 flu season (832 hospitalizations in week 5, an 36% increase from last week).

National (Week 5): Nationally, flu activity remains high, but flu severity is relatively low. Overall, hospitalization rates are similar to recent seasons, but the rates among children and young adults are higher at this time compared to recent seasons. Forty-nine of 54 jurisdictions (all 50 states, the District of Columbia, Guam, Puerto Rico, and U.S. Virgin Islands) reported widespread influenza activity (see map). H1N1pdm09 (41.3%), H3N2 (5.1%), Influenza B (52.2%), and not subtyped flu A (1.4%) have accounted for 24,403 positive flu specimens tested by public health laboratories this season (through week 5).

For hospitals and other regional healthcare facilities to more accurately monitor influenza in the area, this report will include regional and Montgomery County specific influenza activity. The regional influenza report will include positive influenza cases from healthcare facilities in Auglaize, Butler, Champaign, Clark, Darke, Greene, Miami, Montgomery, Preble, Shelby, and Warren counties (<http://www.gdaha.org/regional-hospital-locator>).

Confirmed Influenza-associated Hospitalizations

MMWR Week	40-3*	4*	5*	6*	2019-2020 Flu Season Total as of 2/13/20
Week Ending	1/18/20	1/25/20	2/1/20	2/8/20	
Auglaize	8	2	3	1	14
Butler	107	17	22	19	165
Champaign	10	2	6	5	23
Clark	83	15	14	14	126
Darke	16	1	4	1	22
Greene	70	9	10	7	96
Miami	40	4	9	6	59
Montgomery	461	44	38	37	580
Preble	22	0	2	1	25
Shelby	20	4	5	0	29
Warren	75	8	9	8	100
Total	912	106	122	99	1,239

*Numbers may change based on updated ODRS data.

Weekly Regional Outpatient Influenza Cases

MMWR Week	Week Ending	Influenza A	Influenza B	ILI* Reports (Sentinel Providers)	Weekly Total
40-3	1/18/20	2,532	3,089	207	5,828
4	1/25/20	252	520	43	815
5	2/1/20	431	682	108	1,221
6**	2/8/20	357	527	97	981
Season Total	NA	3,572	4,818	455	8,845

*Influenza-like Illness (ILI)

**Note. Week 6 data are incomplete. Several hospitals have not submitted outpatient data for this week – true case counts are likely higher.

FLUVIEW



A Weekly Influenza Surveillance Report Prepared by the Influenza Division

Weekly Influenza Activity Estimates Reported by State and Territorial Epidemiologists*

Week Ending Feb 01, 2020 - Week 5



*This map indicates geographic spread and does not measure the severity of influenza activity.

National Influenza Activity Summary <http://www.cdc.gov/flu/weekly/fluactivitysurv.htm>

Additional Surveillance Data & Flu Facts

Flu Facts <http://www.flu.gov/>

Ohio Department of Health Seasonal Influenza Activity Summary <https://odh.ohio.gov/wps/portal/gov/odh/know-our-programs/seasonal-influenza/ohio-flu-activity/>

Montgomery County Seasonal Influenza Activity Summary <http://www.phdmc.org/report/montgomery-county-flu-activity-level>



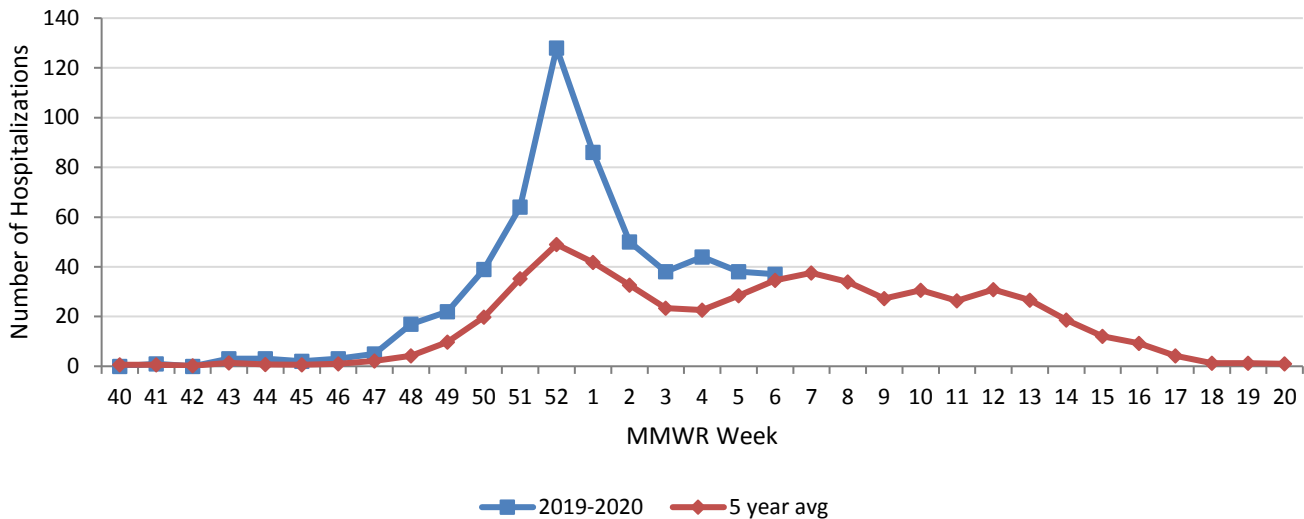
Montgomery County Seasonal Influenza Activity Report MMWR Week 6 2/2/2020 – 2/8/2020

Montgomery County Weekly Surveillance Data

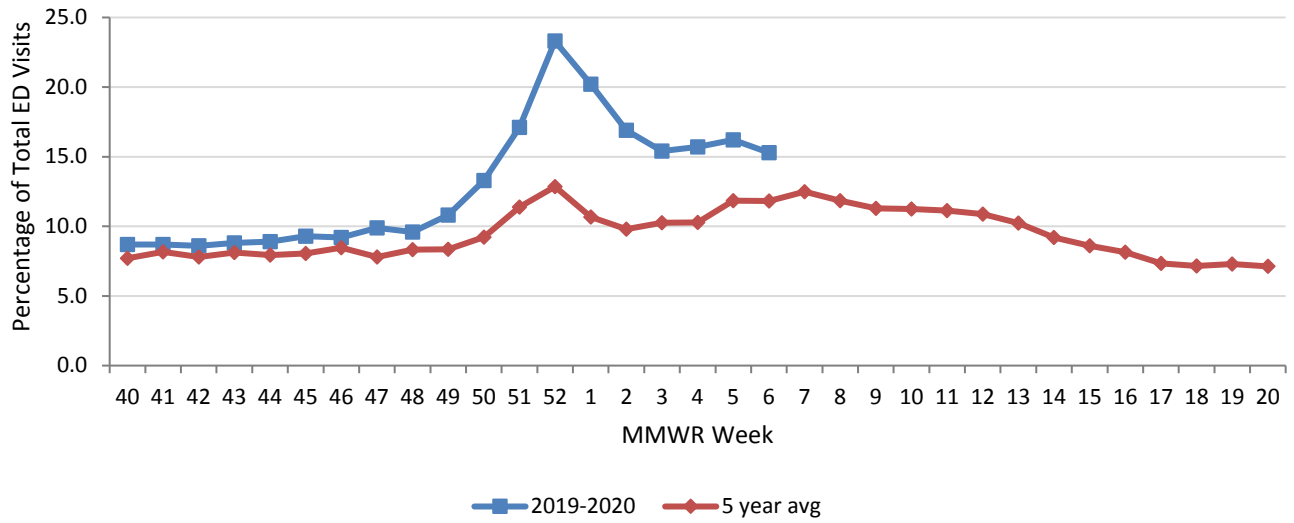
Surveillance Data	Current Week	% Change	Trend
Influenza Hospitalizations	37	-2.6%	
% Constitutional ED visits	15.3%	-5.6%	
% Fever & ILI ED visits	5.0%	-3.8%	
Thermometer sales	160	-16.7%	

*Percent changes based on small numbers may give misleading information about flu activity.
Dash (-) indicates no change

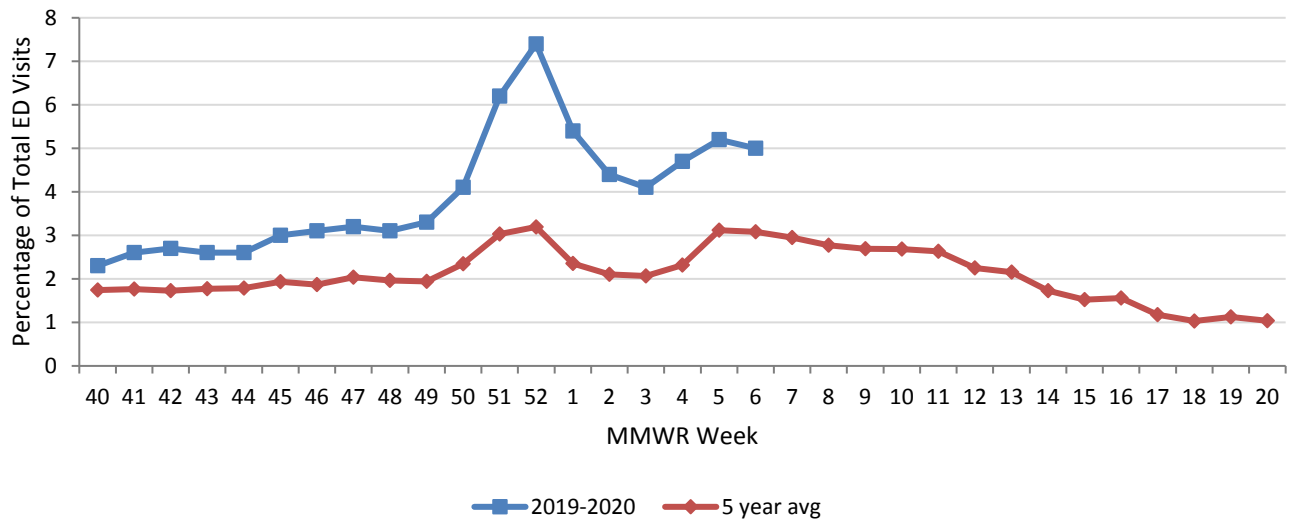
Montgomery County Confirmed Influenza-associated Hospitalizations by MMWR Week with 5-Year Baseline Average; 2019-2020



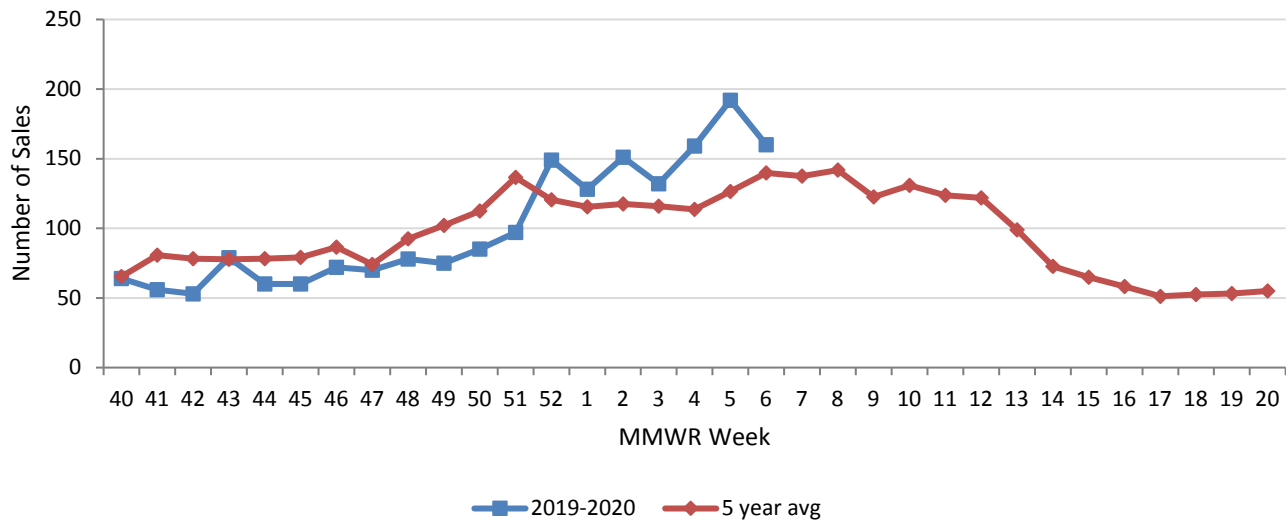
Montgomery County Constitutional ED Visits by MMWR Week with 5-Year Baseline Average; 2019-2020



Montgomery County Fever & ILI Specified ED Visits by MMWR Week with 5-Year Baseline Average; 2019-2020



Montgomery County Thermometer Sales by MMWR Week with 5-Year Baseline Average; 2019-2020



Sources of Influenza Surveillance Data

Six types of data sources are examined on a weekly basis to help determine the influenza activity level for Montgomery County:

National Retail Data Monitor (NRDM)-OTC Drug Purchases: The NRDM collects over-the-counter (OTC) drug sales information from approximately 80 Montgomery County chain drug stores and grocery stores. For influenza surveillance, thermometer sales are monitored on a weekly basis.

Emergency Department Visits (EpiCenter): EpiCenter collects emergency department chief complaint data from hospitals and urgent care facilities across Ohio counties in real time and classifies them into symptom and syndrome categories. Chief complaints from the constitutional syndrome category and the ILI + Fever symptoms classifier are analyzed for influenza surveillance.

Sentinel Providers (ILINet): Sentinel providers, through the US Influenza-like Illness Surveillance Network (ILINet), collect outpatient ILI data. ILI is defined as a fever (> 100 °F), **and** cough and/or sore throat without another known cause. Providers report the total number of patients seen and the number of patients with ILI by age group on a weekly basis. Sentinel providers also submit specimens for influenza testing to the ODH laboratory throughout the influenza season.

Laboratory Surveillance: Positive laboratory reports are forwarded to local health departments. Generally, specimens are submitted by health care providers or hospitals.

Influenza-associated Hospitalizations (ODRS): Influenza-associated hospitalizations are reported to local health departments for entry into the Ohio Disease Reporting System (ODRS). Hospitalizations can be used as an indicator of the severity of illness during a particular influenza season. This condition became reportable in 2009.

Influenza-associated Pediatric Mortality (ODRS): Influenza-associated pediatric mortalities are reported to local health departments for entry into ODRS. Pediatric deaths can be an indicator of the severity of illness during the influenza season. This condition became reportable in 2005.

For further information or questions, please contact Public Health – Dayton & Montgomery County, Epidemiology Department at epi@phdmc.org or 937-224-3691.

Completed by PHDMC Epidemiology Department, on February 13, 2020