



Dayton &  
Montgomery  
County

## West Central Ohio (WCO) Seasonal Influenza Activity Report MMWR Week 8 2/16/2020 – 2/22/2020

### Weekly Influenza Activity Summary:

**Montgomery County (Week 8):** There were **24 influenza-associated hospitalizations** reported during week 8 (**a 17% decrease**); influenza hospitalizations stayed below baseline figures. *Fever + ILI and Constitutional emergency department visits decreased from week 7 to week 8 and remained above baseline.* Overall, influenza activity in Montgomery County decreased during week 8, but the majority of indicators remain above baseline.

**West Central Ohio Region (Week 8):** Influenza hospitalizations continued to decrease; there were **91 hospitalizations** during week 8. Fifty-eight percent (58%) of regional influenza-associated hospitalizations occurred in individuals 5-64 years this flu season. WCO reported **over 10,000 outpatient flu cases** this season. Overall, regional influenza activity has decreased in recent weeks.

#### Ohio (Week 8): Current Activity Level - Widespread

Increased ILI in at least half of the regions AND recent (within the past 3 weeks) lab confirmed influenza in the state. The Ohio Department of Health (ODH) has reported the following positive results from flu specimens sent to the ODH laboratory (through 2/22/20): (709) Total [subtyped] positives; (377) A/pdmH1N1; (17) A/H3N2; (315) Influenza B. ODH reported **7,592 influenza-associated hospitalizations** so far during the 2019-2020 flu season (**981 hospitalizations in week 8, an 18% decrease from last week**).

**National (Week 8):** Nationally, flu activity remains high, but **flu indicators decreased for the second consecutive week**. Forty-nine of 54 jurisdictions reported widespread influenza activity (see map). H1N1pdm09 (47.1%), H3N2 (4.3%), Influenza B (47.1%), and not subtyped flu A (1.4%) have accounted for 34,807 positive flu specimens tested by public health laboratories this season (through week 8). **Pneumonia and flu deaths have been low this season, but a total of 125 pediatric deaths have been reported.**

For hospitals and other regional healthcare facilities to more accurately monitor influenza in the area, this report will include regional and Montgomery County specific influenza activity. The regional influenza report will include positive influenza cases from healthcare facilities in Auglaize, Butler, Champaign, Clark, Darke, Greene, Miami, Montgomery, Preble, Shelby, and Warren counties (<http://www.gdaha.org/regional-hospital-locator>).

### Confirmed Influenza-associated Hospitalizations

MMWR Week	40-5*	6*	7*	8*	2019-2020 Flu Season Total as of 2/28/20
Week Ending	2/1/20	2/8/20	2/15/20	2/22/20	
Auglaize	13	1	2	5	<b>21</b>
Butler	155	22	20	19	<b>216</b>
Champaign	18	5	3	4	<b>30</b>
Clark	113	17	18	11	<b>159</b>
Darke	21	1	4	0	<b>26</b>
Greene	90	10	9	9	<b>118</b>
Miami	53	7	3	2	<b>65</b>
Montgomery	543	40	29	24	<b>636</b>
Preble	24	2	3	2	<b>31</b>
Shelby	29	2	3	2	<b>36</b>
Warren	92	10	9	13	<b>124</b>
<b>Total</b>	<b>1,151</b>	<b>117</b>	<b>103</b>	<b>91</b>	<b>1,462</b>

\*Numbers may change based on updated ODRS data.

## Weekly Regional Outpatient Influenza Cases

MMWR Week	Week Ending	Influenza A	Influenza B	ILI* Reports (Sentinel Providers)	Weekly Total
40-5	2/1/20	3,215	4,291	358	<b>7,864</b>
6	2/8/20	368	543	97	<b>1,008</b>
7	2/15/20	367	442	81	<b>890</b>
8**	2/22/20	221	178	27	<b>426</b>
<b>Season Total</b>	NA	<b>4,171</b>	<b>5,454</b>	<b>563</b>	<b>10,188</b>

\*Influenza-like Illness (ILI)

\*\*Note. Week 6 and 8 data are incomplete. Several hospitals have not submitted outpatient data for these week – true case counts are likely higher.



### A Weekly Influenza Surveillance Report Prepared by the Influenza Division

Weekly Influenza Activity Estimates Reported by State and Territorial Epidemiologists\*

Week Ending Feb 22, 2020 - Week 8



\*This map indicates geographic spread and does not measure the severity of influenza activity.

National Influenza Activity Summary <http://www.cdc.gov/flu/weekly/fluactivitysurv.htm>

### Additional Surveillance Data & Flu Facts

Flu Facts <http://www.flu.gov/>

Ohio Department of Health Seasonal Influenza Activity Summary <https://odh.ohio.gov/wps/portal/gov/odh/know-our-programs/seasonal-influenza/ohio-flu-activity/>

Montgomery County Seasonal Influenza Activity Summary <http://www.phdmc.org/report/montgomery-county-flu-activity-level>



Dayton &  
Montgomery  
County

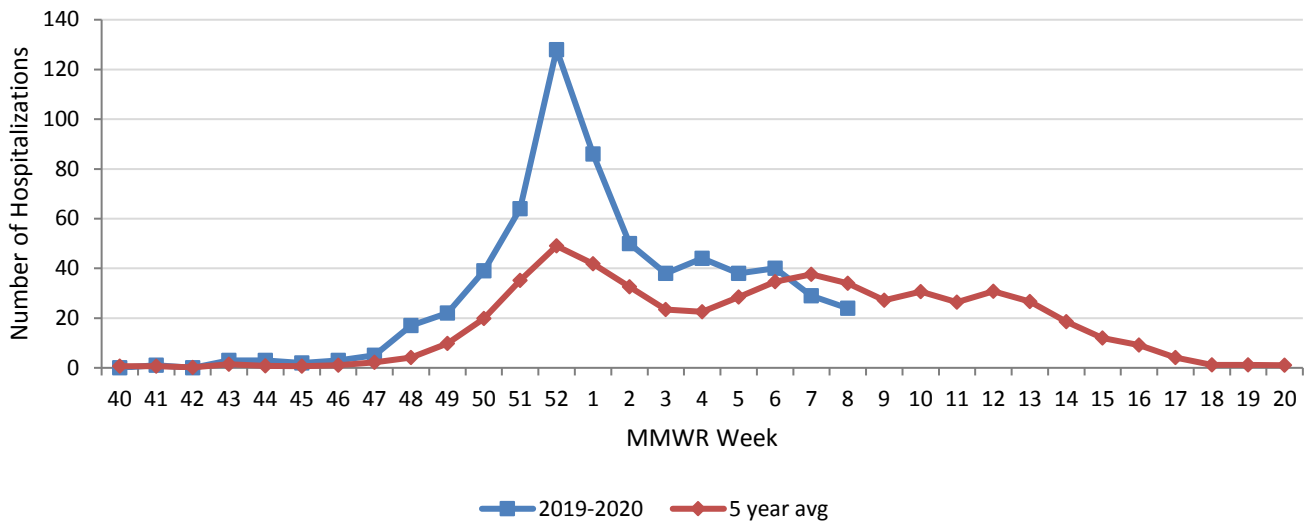
## Montgomery County Seasonal Influenza Activity Report MMWR Week 8 2/16/2020 – 2/22/2020

### Montgomery County Weekly Surveillance Data

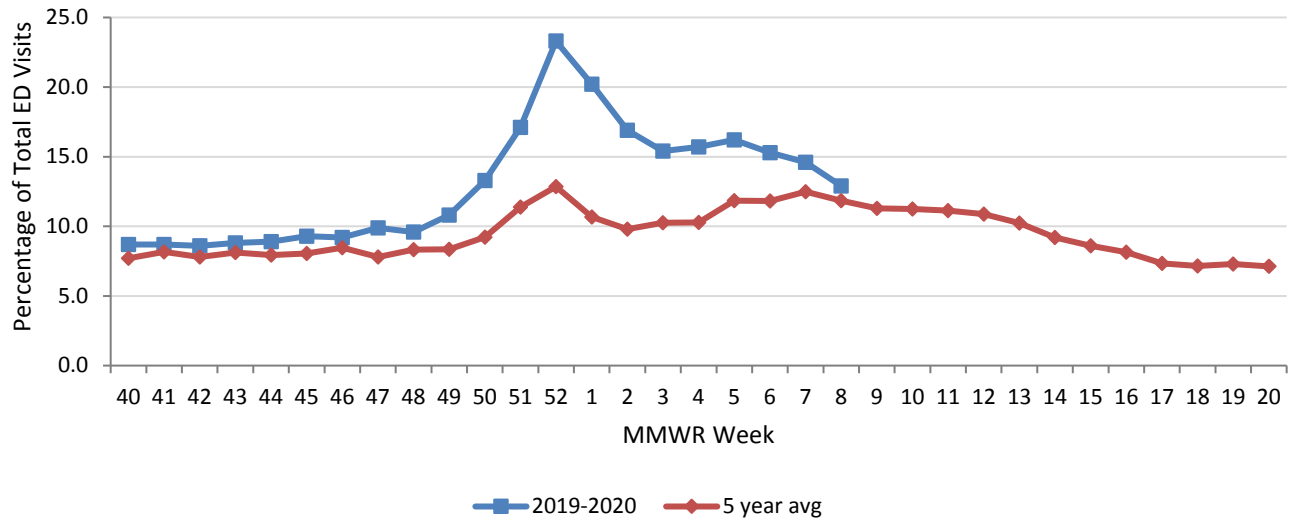
Surveillance Data	Current Week	% Change	Trend
Influenza Hospitalizations	24	-17.2%	
% Constitutional ED visits	12.9%	-11.6%	
% Fever & ILI ED visits	3.7%	-14.0%	
Thermometer sales	155	4.0%	

\*Percent changes based on small numbers may give misleading information about flu activity.  
Dash (-) indicates no change

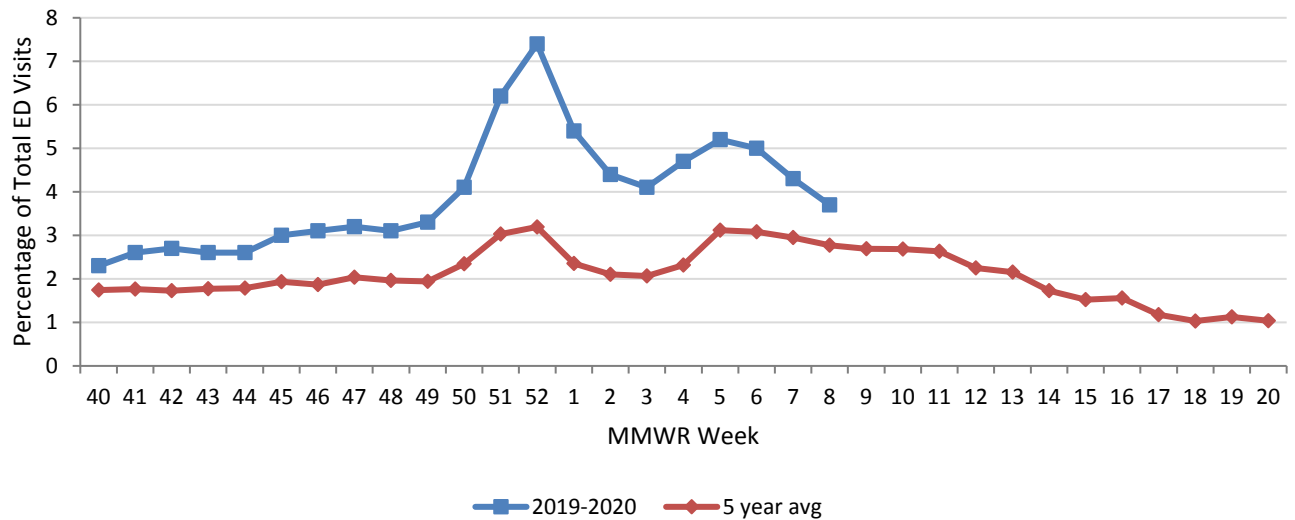
### Montgomery County Confirmed Influenza-associated Hospitalizations by MMWR Week with 5-Year Baseline Average; 2019-2020



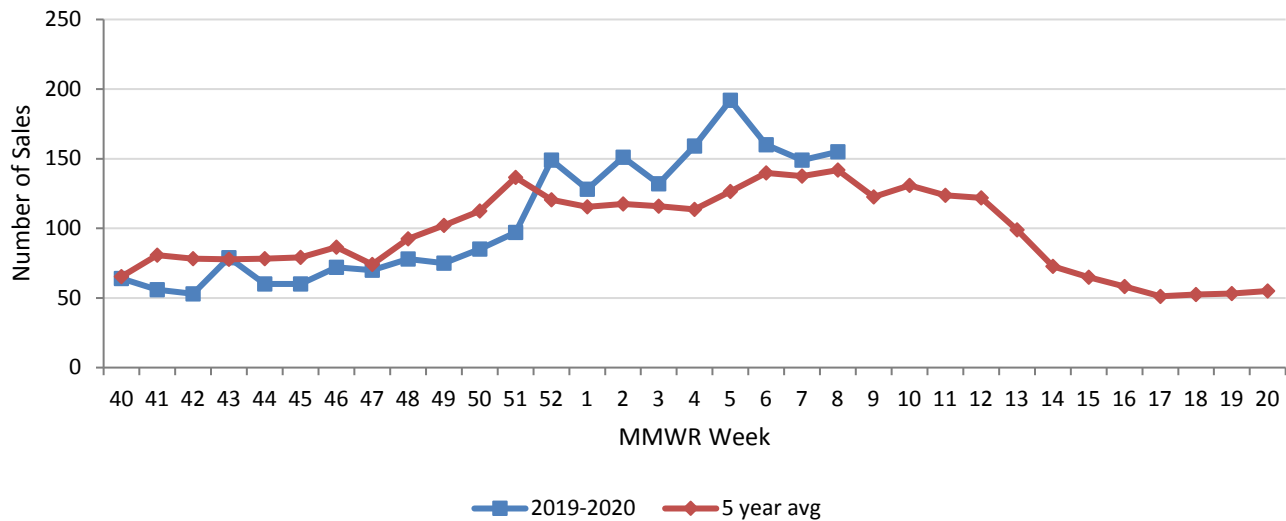
### Montgomery County Constitutional ED Visits by MMWR Week with 5-Year Baseline Average; 2019-2020



### Montgomery County Fever & ILI Specified ED Visits by MMWR Week with 5-Year Baseline Average; 2019-2020



## Montgomery County Thermometer Sales by MMWR Week with 5-Year Baseline Average; 2019-2020




---

### Sources of Influenza Surveillance Data

Six types of data sources are examined on a weekly basis to help determine the influenza activity level for Montgomery County:

**National Retail Data Monitor (NRDM)-OTC Drug Purchases:** The NRDM collects over-the-counter (OTC) drug sales information from approximately 80 Montgomery County chain drug stores and grocery stores. For influenza surveillance, thermometer sales are monitored on a weekly basis.

**Emergency Department Visits (EpiCenter):** EpiCenter collects emergency department chief complaint data from hospitals and urgent care facilities across Ohio counties in real time and classifies them into symptom and syndrome categories. Chief complaints from the constitutional syndrome category and the ILI + Fever symptoms classifier are analyzed for influenza surveillance.

**Sentinel Providers (ILINet):** Sentinel providers, through the US Influenza-like Illness Surveillance Network (ILINet), collect outpatient ILI data. ILI is defined as a fever (> 100 °F), **and** cough and/or sore throat without another known cause. Providers report the total number of patients seen and the number of patients with ILI by age group on a weekly basis. Sentinel providers also submit specimens for influenza testing to the ODH laboratory throughout the influenza season.

**Laboratory Surveillance:** Positive laboratory reports are forwarded to local health departments. Generally, specimens are submitted by health care providers or hospitals.

**Influenza-associated Hospitalizations (ODRS):** Influenza-associated hospitalizations are reported to local health departments for entry into the Ohio Disease Reporting System (ODRS). Hospitalizations can be used as an indicator of the severity of illness during a particular influenza season. This condition became reportable in 2009.

**Influenza-associated Pediatric Mortality (ODRS):** Influenza-associated pediatric mortalities are reported to local health departments for entry into ODRS. Pediatric deaths can be an indicator of the severity of illness during the influenza season. This condition became reportable in 2005.

---

For further information or questions, please contact Public Health – Dayton & Montgomery County, Epidemiology Department at [epi@phdmc.org](mailto:epi@phdmc.org) or 937-224-3691.

Completed by PHDMC Epidemiology Department, on February 28, 2020