



Dayton &
Montgomery
County

West Central Ohio (WCO) Seasonal Influenza Activity Report MMWR Week 12 3/15/2020 – 3/21/2020

Weekly Influenza Activity Summary:

Montgomery County (Week 12): There were **18 influenza-associated hospitalizations** reported during week 12 (**a 55% decrease**); influenza hospitalizations are below baseline figures. **Fever + ILI emergency department (ED) visits increased from week 11 to week 12, but constitutional visits decreased; both remained above baseline.** Overall, flu activity is decreasing. Note that ED data after week 9 are likely skewed due to the COVID-19 pandemic.

West Central Ohio Region (Week 12): Influenza hospitalizations decreased; there were **35 hospitalizations** during week 12 (**a 61% decrease**). Fifty-six percent (56%) of regional influenza-associated hospitalizations occurred in individuals 5-64 years this flu season. WCO reported **over 12,000 outpatient flu cases** this season. Overall, regional influenza activity is decreasing. Note that outpatient data are incomplete and are likely much higher.

Ohio (Week 12): Current Activity Level - Widespread

Increased ILI in at least half of the regions AND recent (within the past 3 weeks) lab confirmed influenza in the state. The Ohio Department of Health (ODH) has reported the following positive results from flu specimens sent to the ODH laboratory (through 3/21/20): (1,023) Total [subtyped] positives; (616) A/pdmH1N1; (17) A/H3N2; (390) Influenza B. ODH reported **10,540 influenza-associated hospitalizations** so far during the 2019-2020 flu season (**537 hospitalizations in week 12, a 7% decrease from last week**). **All flu indicators expect hospitalizations remain above baseline levels.**

National (Week 12): Nationally, flu activity remains high, but **laboratory-confirmed flu activity decreased; however, ILI activity increased likely due to COVID-19.** Thirty-nine of 54 jurisdictions reported widespread influenza activity (see map). H1N1pdm09 (50.7%), H3N2 (4.1%), Influenza B (43.3%), and not subtyped flu A (1.8%) have accounted for 42,510 positive flu specimens tested by public health laboratories this season. **The CDC estimates 38-54 million illnesses, 400,000-730,000 hospitalizations, 24,000-62,000 total deaths, and confirms 155 pediatric deaths this season.**

For hospitals and other regional healthcare facilities to more accurately monitor influenza in the area, this report will include regional and Montgomery County specific influenza activity. The regional influenza report will include positive influenza cases from healthcare facilities in Auglaize, Butler, Champaign, Clark, Darke, Greene, Miami, Montgomery, Preble, Shelby, and Warren counties (<http://www.gdaha.org/regional-hospital-locator>).

Confirmed Influenza-associated Hospitalizations

MMWR Week	40-9*	10*	11*	12*	2019-2020 Flu Season Total as of 3/27/20
Week Ending	2/29/20	3/7/20	3/14/20	3/21/20	
Auglaize	25	1	4	0	30
Butler	255	26	15	7	303
Champaign	35	3	3	0	41
Clark	172	14	10	4	200
Darke	32	2	3	2	39
Greene	134	13	1	0	148
Miami	73	6	6	1	86
Montgomery	698	49	40	18	805
Preble	33	2	1	0	36
Shelby	44	7	1	2	54
Warren	137	8	6	1	152
Total	1,638	131	90	35	1,894

*Numbers may change based on updated ODRS data.

Weekly Regional Outpatient Influenza Cases

MMWR Week	Week Ending	Influenza A	Influenza B	ILI* Reports (Sentinel Providers)	Weekly Total
40-9	2/29/20	4,556	5,691	719	10,966
10	3/7/20	364	157	49	570
11	3/14/20	359	148	37	544
12	3/21/20	125	62	22	209
Season Total**	NA	5,404	6,058	827	12,289

*Influenza-like Illness (ILI)

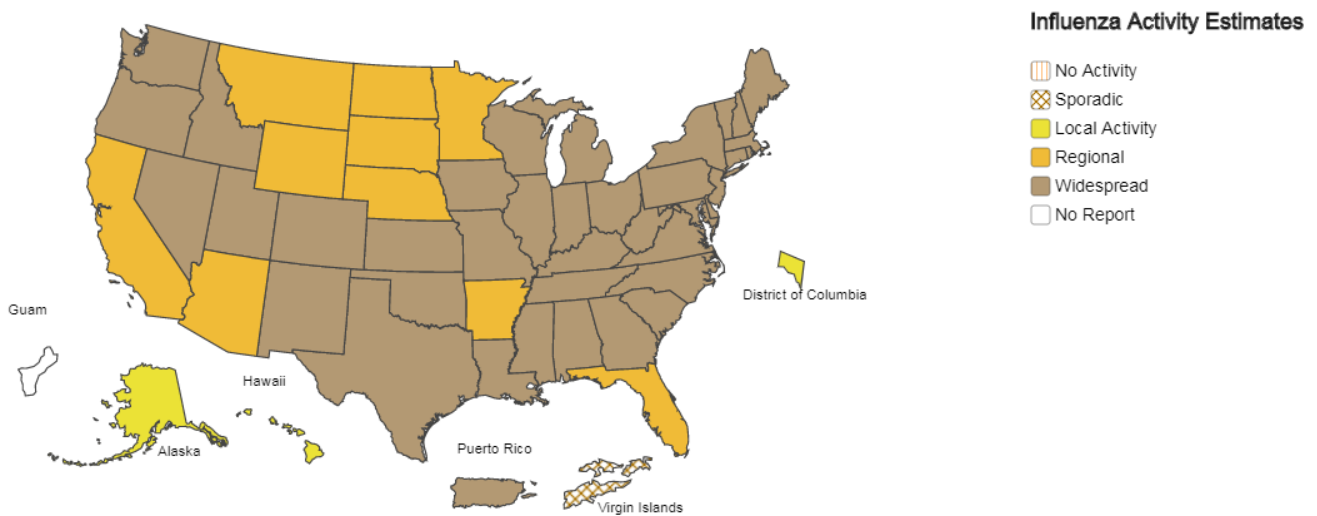
**Note. Data are incomplete. Several hospitals have not submitted outpatient data for multiple weeks – true case counts are likely higher.



A Weekly Influenza Surveillance Report Prepared by the Influenza Division

Weekly Influenza Activity Estimates Reported by State and Territorial Epidemiologists*

Week Ending Mar 21, 2020 - Week 12



*This map indicates geographic spread and does not measure the severity of influenza activity.

National Influenza Activity Summary <http://www.cdc.gov/flu/weekly/fluactivitysurv.htm>

Additional Surveillance Data & Flu Facts

Flu Facts <http://www.flu.gov/>

Ohio Department of Health Seasonal Influenza Activity Summary <https://odh.ohio.gov/wps/portal/gov/odh/know-our-programs/seasonal-influenza/ohio-flu-activity/>

Montgomery County Seasonal Influenza Activity Summary <http://www.phdmc.org/report/montgomery-county-flu-activity-level>



Montgomery County Seasonal Influenza Activity Report MMWR Week 12 3/15/2020 – 3/21/2020

Montgomery County Weekly Surveillance Data

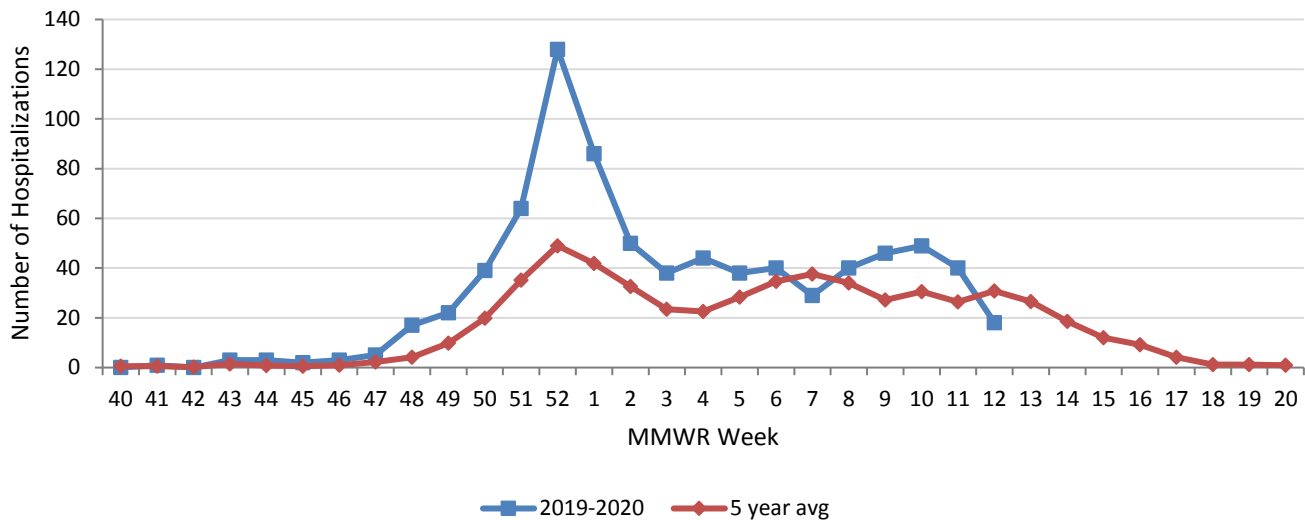
Surveillance Data	Current Week	% Change	Trend
Influenza Hospitalizations	18	-55.0%	
% Constitutional ED visits	14.5%**	-4.6%**	
% Fever & ILI ED visits	5.1%**	10.9%**	
Thermometer sales	342**	-39.3%**	

*Percent changes based on small numbers may give misleading information about flu activity.

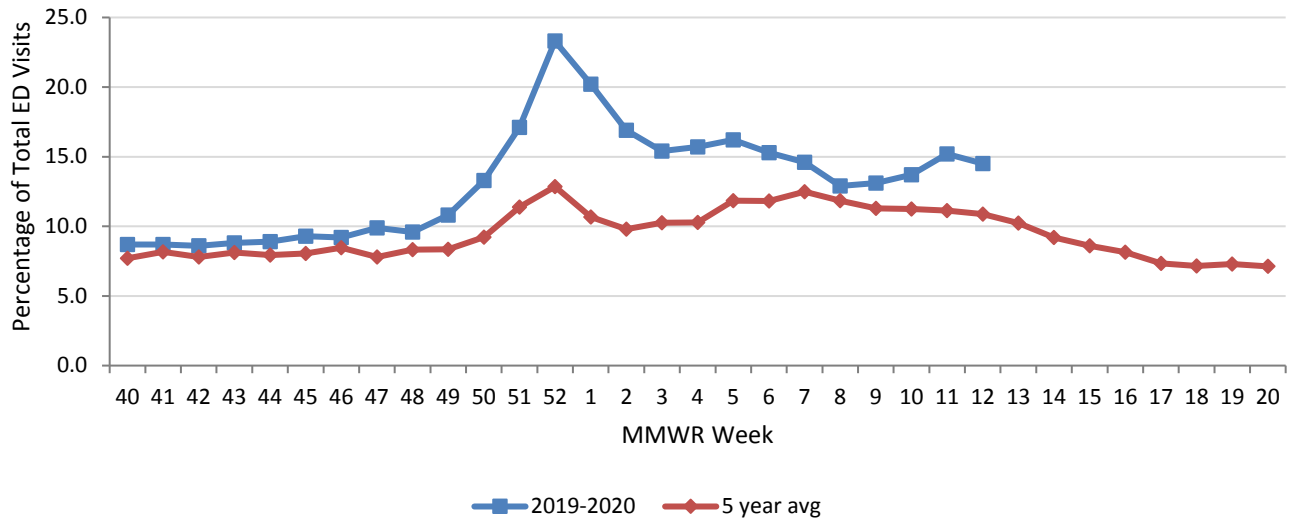
Dash (-) indicates no change

**Note. These values are likely skewed due to the COVID-19 pandemic.

Montgomery County Confirmed Influenza-associated Hospitalizations by MMWR Week with 5-Year Baseline Average; 2019-2020

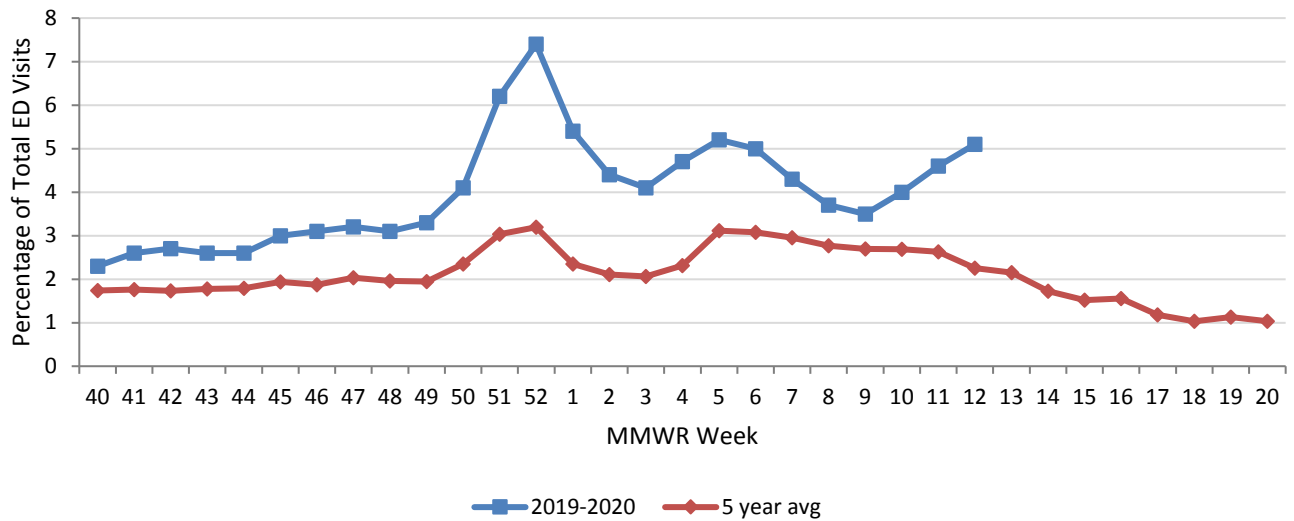


Montgomery County Constitutional ED Visits by MMWR Week with 5-Year Baseline Average; 2019-2020



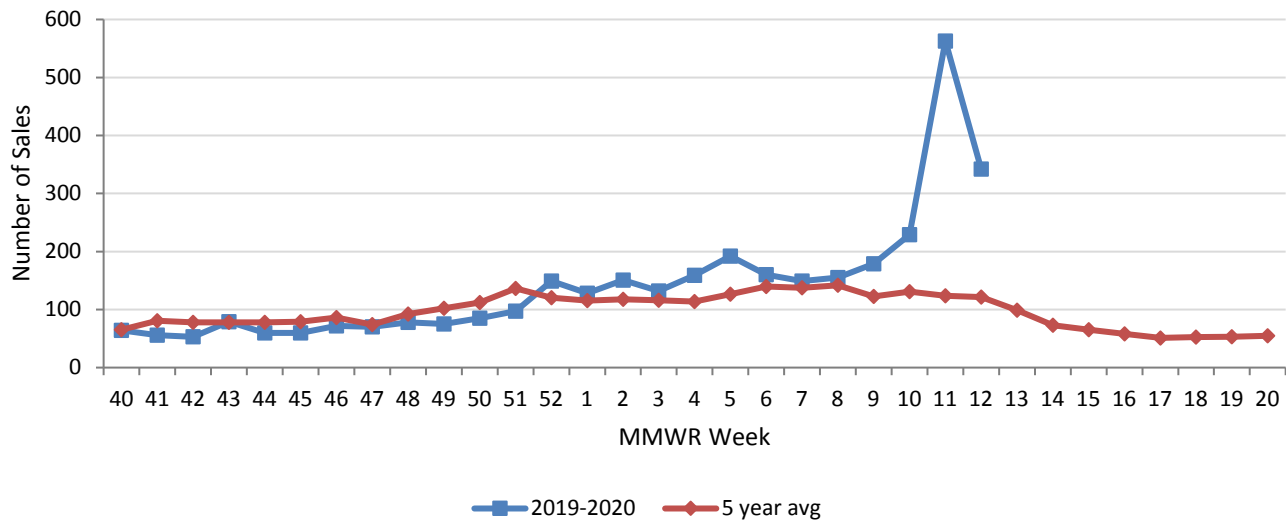
**Note. Values after week 9 are likely skewed due to the COVID-19 pandemic.

Montgomery County Fever & ILI Specified ED Visits by MMWR Week with 5-Year Baseline Average; 2019-2020



**Note. Values after week 9 are likely skewed due to the COVID-19 pandemic.

Montgomery County Thermometer Sales by MMWR Week with 5-Year Baseline Average; 2019-2020



**Note. Values after week 9 are likely skewed due to the COVID-19 pandemic.

Sources of Influenza Surveillance Data

Six types of data sources are examined on a weekly basis to help determine the influenza activity level for Montgomery County:

National Retail Data Monitor (NRDM)-OTC Drug Purchases: The NRDM collects over-the-counter (OTC) drug sales information from approximately 80 Montgomery County chain drug stores and grocery stores. For influenza surveillance, thermometer sales are monitored on a weekly basis.

Emergency Department Visits (EpiCenter): EpiCenter collects emergency department chief complaint data from hospitals and urgent care facilities across Ohio counties in real time and classifies them into symptom and syndrome categories. Chief complaints from the constitutional syndrome category and the ILI + Fever symptoms classifier are analyzed for influenza surveillance.

Sentinel Providers (ILINet): Sentinel providers, through the US Influenza-like Illness Surveillance Network (ILINet), collect outpatient ILI data. ILI is defined as a fever (> 100 °F), **and** cough and/or sore throat without another known cause. Providers report the total number of patients seen and the number of patients with ILI by age group on a weekly basis. Sentinel providers also submit specimens for influenza testing to the ODH laboratory throughout the influenza season.

Laboratory Surveillance: Positive laboratory reports are forwarded to local health departments. Generally, specimens are submitted by health care providers or hospitals.

Influenza-associated Hospitalizations (ODRS): Influenza-associated hospitalizations are reported to local health departments for entry into the Ohio Disease Reporting System (ODRS). Hospitalizations can be used as an indicator of the severity of illness during a particular influenza season. This condition became reportable in 2009.

Influenza-associated Pediatric Mortality (ODRS): Influenza-associated pediatric mortalities are reported to local health departments for entry into ODRS. Pediatric deaths can be an indicator of the severity of illness during the influenza season. This condition became reportable in 2005.

For further information or questions, please contact Public Health – Dayton & Montgomery County, Epidemiology Department at epi@phdmc.org or 937-224-3691.

Completed by PHDMC Epidemiology Section, on March 27, 2020