



Dayton &
Montgomery
County

West Central Ohio (WCO) Seasonal Influenza Activity Report MMWR Week 15 4/5/2020 – 4/11/2020

Weekly Influenza Activity Summary:

Montgomery County (Week 15): There were **2 influenza-associated hospitalizations** reported during week 15; influenza hospitalizations are below baseline figures. *Fever + ILI and constitutional emergency department (ED) visits decreased from week 14 to week 15; both remained above baseline.* Overall, flu activity is decreasing. Note that ED data after week 9 are likely skewed due to the COVID-19 pandemic.

West Central Ohio Region (Week 15): Influenza hospitalizations increased; there were **3 hospitalizations** during week 15. Fifty-five percent (55%) of regional influenza-associated hospitalizations occurred in individuals 5-64 years this flu season. WCO reported **12,352 outpatient flu cases and 1,941 hospitalizations** this season. Overall, regional influenza activity is decreasing. Note that outpatient data are incomplete and are likely much higher.

Ohio (Week 15): Current Activity Level - Regional

The Ohio Department of Health (ODH) has reported the following positive results from flu specimens sent to the ODH laboratory (through 4/11/20): (1,033) Total [subtyped] positives; (626) A/pdmH1N1; (17) A/H3N2; (390) Influenza B. ODH reported **10,931 influenza-associated hospitalizations** so far during the 2019-2020 flu season (**46 hospitalizations in week 15, a 62% decrease from last week**). **All flu indicators expect hospitalizations remain above baseline levels.**

National (Week 15): Nationally, flu activity is decreasing, and **laboratory-confirmed flu activity is low; ILI activity continues to decrease but is still elevated likely due to COVID-19.** Three of 54 jurisdictions reported widespread influenza activity (see map). H1N1pdm09 (51.3%), H3N2 (4.1%), Influenza B (42.9%), and not subtyped flu A (1.7%) have accounted for 43,456 positive flu specimens tested by public health laboratories this season. **The CDC estimates 39-56 million illnesses, 410,000-740,000 hospitalizations, 24,000-62,000 total deaths, and confirms 166 pediatric deaths.**

For hospitals and other regional healthcare facilities to more accurately monitor influenza in the area, this report will include regional and Montgomery County specific influenza activity. The regional influenza report will include positive influenza cases from healthcare facilities in Auglaize, Butler, Champaign, Clark, Darke, Greene, Miami, Montgomery, Preble, Shelby, and Warren counties (<http://www.gdaha.org/regional-hospital-locator>).

Confirmed Influenza-associated Hospitalizations

| MMWR Week | 40-12* | 13* | 14* | 15* | 2019-2020 Flu Season Total as of 4/17/20 |
|--------------|--------------|-----------|----------|----------|--|
| Week Ending | 3/21/20 | 3/28/20 | 4/4/20 | 4/11/20 | |
| Auglaize | 32 | 0 | 0 | 0 | 32 |
| Butler | 307 | 0 | 0 | 0 | 307 |
| Champaign | 41 | 1 | 0 | 0 | 42 |
| Clark | 200 | 3 | 0 | 0 | 203 |
| Darke | 39 | 0 | 0 | 0 | 39 |
| Greene | 153 | 1 | 0 | 1 | 155 |
| Miami | 86 | 1 | 0 | 0 | 87 |
| Montgomery | 817 | 7 | 1 | 2 | 827 |
| Preble | 36 | 0 | 0 | 0 | 36 |
| Shelby | 55 | 1 | 0 | 0 | 56 |
| Warren | 156 | 1 | 0 | 0 | 157 |
| Total | 1,922 | 15 | 1 | 3 | 1,941 |

*Numbers may change based on updated ODRS data.

Weekly Regional Outpatient Influenza Cases

| MMWR Week | Week Ending | Influenza A | Influenza B | ILI* Reports (Sentinel Providers) | Weekly Total |
|-----------------------|-------------|--------------|--------------|-----------------------------------|---------------|
| 40-12 | 3/21/20 | 5,411 | 6,059 | 833 | 12,303 |
| 13 | 3/28/20 | 27 | 2 | 3 | 32 |
| 14 | 4/4/20 | 13 | 3 | 0 | 16 |
| 15 | 4/11/20 | 0 | 2 | 0 | 2 |
| Season Total** | NA | 5,451 | 6,066 | 836 | 12,353 |

*Influenza-like Illness (ILI)

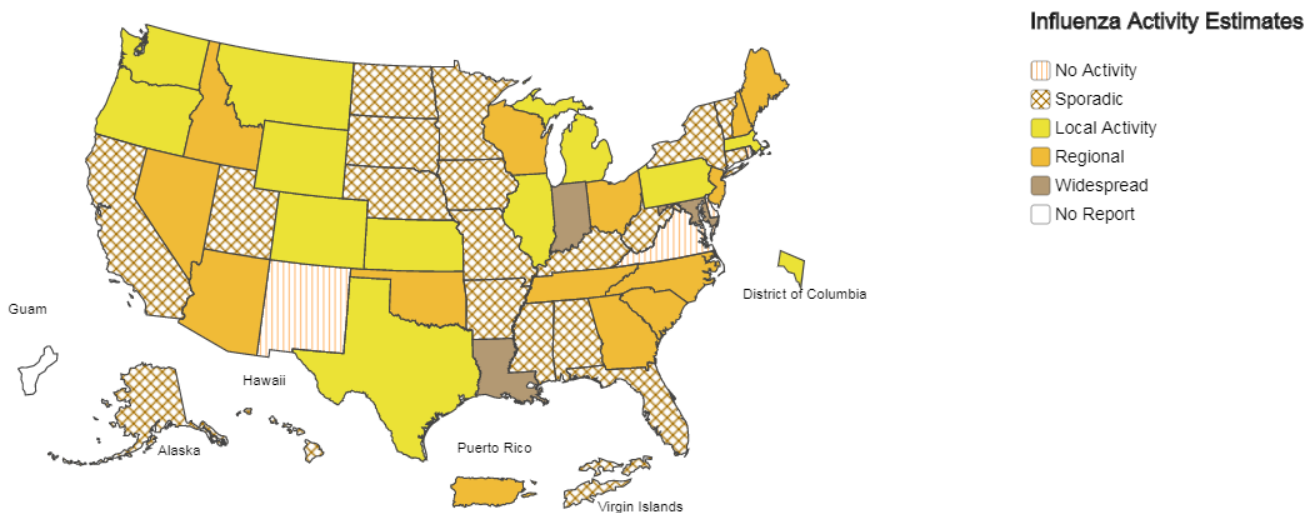
**Note. Data are incomplete. Several hospitals have not submitted outpatient data for multiple weeks – true case counts are likely higher.



A Weekly Influenza Surveillance Report Prepared by the Influenza Division

Weekly Influenza Activity Estimates Reported by State and Territorial Epidemiologists*

Week Ending Apr 11, 2020 - Week 15



*This map indicates geographic spread and does not measure the severity of influenza activity.

National Influenza Activity Summary <http://www.cdc.gov/flu/weekly/fluactivitysurv.htm>

Additional Surveillance Data & Flu Facts

Flu Facts <http://www.flu.gov/>

Ohio Department of Health Seasonal Influenza Activity Summary <https://odh.ohio.gov/wps/portal/gov/odh/know-our-programs/seasonal-influenza/ohio-flu-activity/>

Montgomery County Seasonal Influenza Activity Summary <http://www.phdmc.org/report/montgomery-county-flu-activity-level>



Montgomery County Seasonal Influenza Activity Report MMWR Week 15 4/5/2020 – 4/11/2020

Montgomery County Weekly Surveillance Data

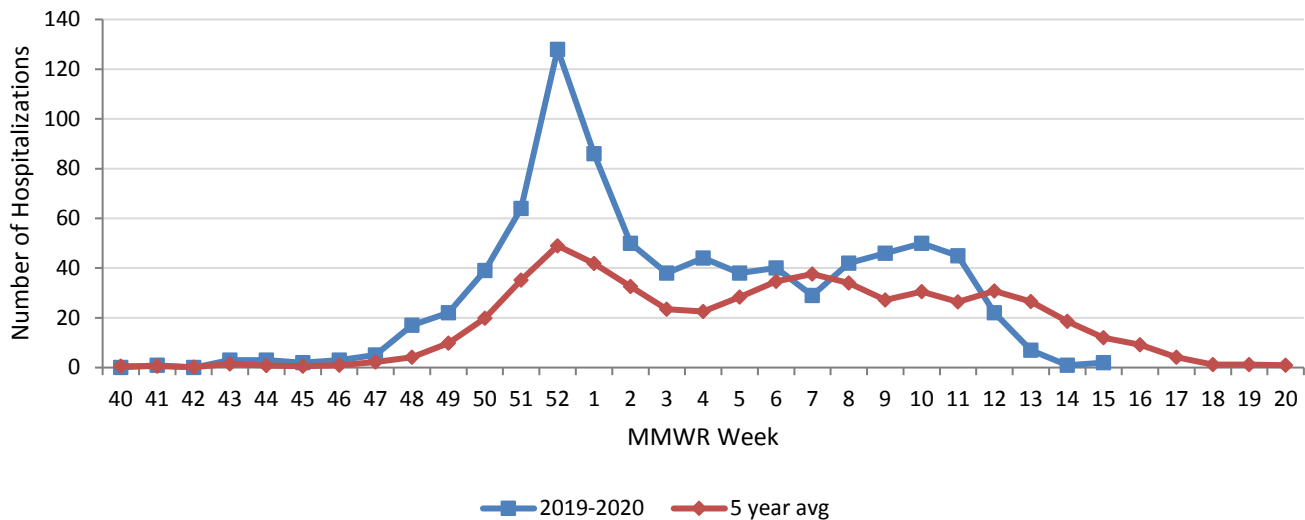
| Surveillance Data | Current Week | % Change | Trend |
|----------------------------|--------------|----------|-------|
| Influenza Hospitalizations | 2 | * | |
| % Constitutional ED visits | 9.1%** | -6.2%** | |
| % Fever & ILI ED visits | 2.4%** | -29.4%** | |
| Thermometer sales | 141** | 6.8%** | |

*Percent changes based on small numbers are suppressed.

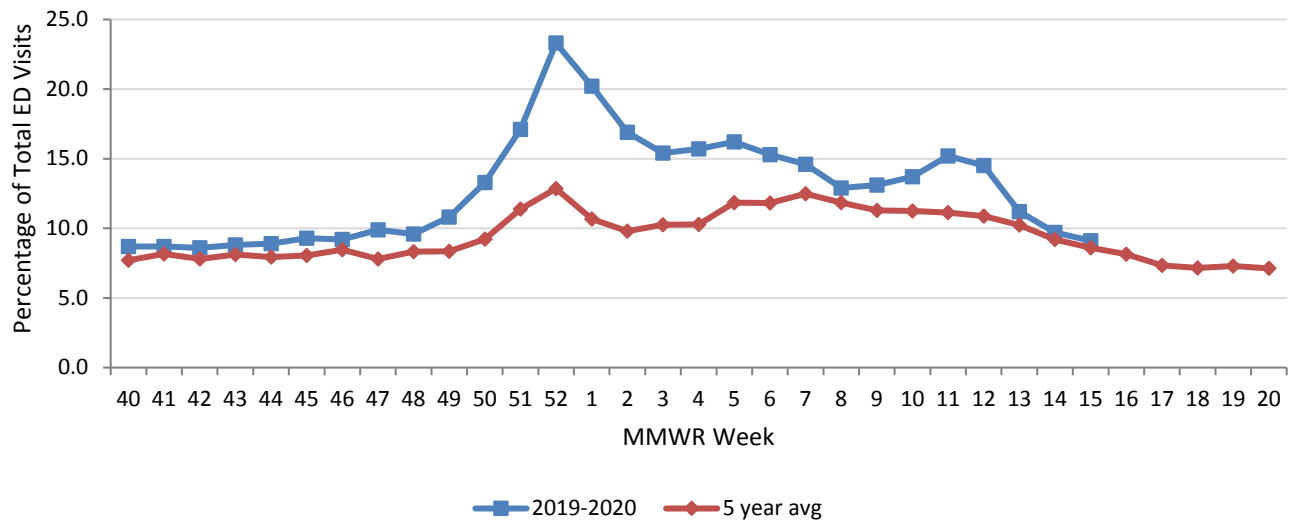
Dash (-) indicates no change

**Note. These values are likely skewed due to the COVID-19 pandemic.

Montgomery County Confirmed Influenza-associated Hospitalizations by MMWR Week with 5-Year Baseline Average; 2019-2020

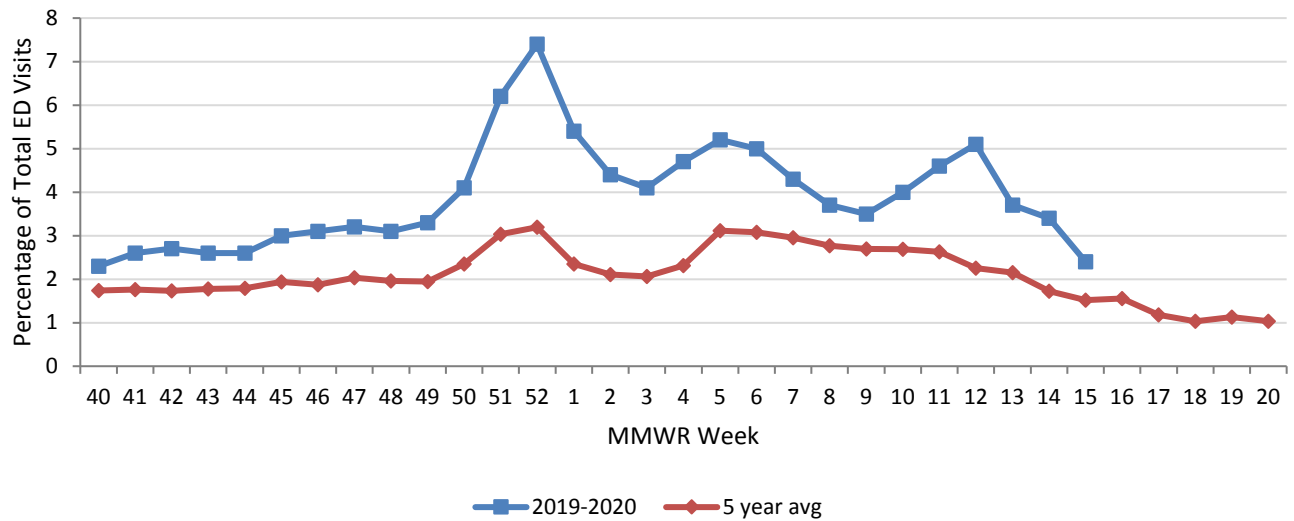


Montgomery County Constitutional ED Visits by MMWR Week with 5-Year Baseline Average; 2019-2020



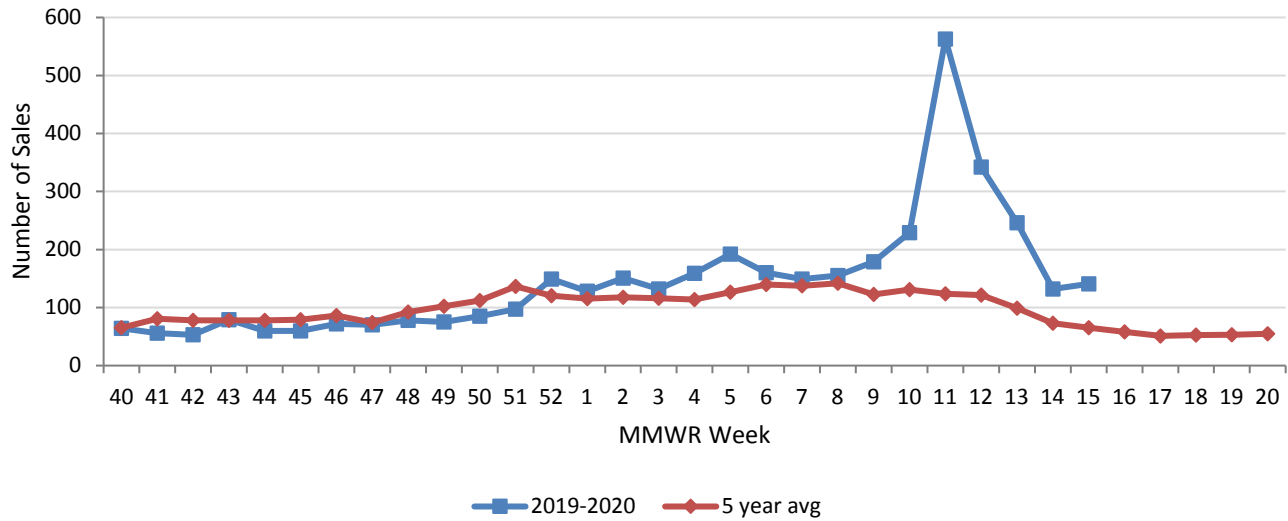
**Note. Values after week 9 are likely skewed due to the COVID-19 pandemic.

Montgomery County Fever & ILI Specified ED Visits by MMWR Week with 5-Year Baseline Average; 2019-2020



**Note. Values after week 9 are likely skewed due to the COVID-19 pandemic.

Montgomery County Thermometer Sales by MMWR Week with 5-Year Baseline Average; 2019-2020



**Note. Values after week 9 are likely skewed due to the COVID-19 pandemic.

Sources of Influenza Surveillance Data

Six types of data sources are examined on a weekly basis to help determine the influenza activity level for Montgomery County:

National Retail Data Monitor (NRDM)-OTC Drug Purchases: The NRDM collects over-the-counter (OTC) drug sales information from approximately 80 Montgomery County chain drug stores and grocery stores. For influenza surveillance, thermometer sales are monitored on a weekly basis.

Emergency Department Visits (EpiCenter): EpiCenter collects emergency department chief complaint data from hospitals and urgent care facilities across Ohio counties in real time and classifies them into symptom and syndrome categories. Chief complaints from the constitutional syndrome category and the ILI + Fever symptoms classifier are analyzed for influenza surveillance.

Sentinel Providers (ILINet): Sentinel providers, through the US Influenza-like Illness Surveillance Network (ILINet), collect outpatient ILI data. ILI is defined as a fever (> 100 °F), **and** cough and/or sore throat without another known cause. Providers report the total number of patients seen and the number of patients with ILI by age group on a weekly basis. Sentinel providers also submit specimens for influenza testing to the ODH laboratory throughout the influenza season.

Laboratory Surveillance: Positive laboratory reports are forwarded to local health departments. Generally, specimens are submitted by health care providers or hospitals.

Influenza-associated Hospitalizations (ODRS): Influenza-associated hospitalizations are reported to local health departments for entry into the Ohio Disease Reporting System (ODRS). Hospitalizations can be used as an indicator of the severity of illness during a particular influenza season. This condition became reportable in 2009.

Influenza-associated Pediatric Mortality (ODRS): Influenza-associated pediatric mortalities are reported to local health departments for entry into ODRS. Pediatric deaths can be an indicator of the severity of illness during the influenza season. This condition became reportable in 2005.

For further information or questions, please contact Public Health – Dayton & Montgomery County, Epidemiology Department at epi@phdmc.org or 937-224-3691.

Completed by PHDMC Epidemiology Section, on April 17, 2020