



Dayton &  
Montgomery  
County

## West Central Ohio (WCO) Seasonal Influenza Activity Report MMWR Week 15 4/11/2021 – 4/17/2021

### Weekly Influenza Activity Summary:

**Montgomery County (Week 15):** There were **0 influenza-associated hospitalizations** reported during week 15. **Montgomery County had 207 times as many hospitalizations (827) last season at this time.** Emergency department data are not reported this week as Ohio transitions between syndromic surveillance data vendors. Montgomery County's flu activity remains low.

**West Central Ohio Region (Week 15):** There was **1 hospitalization** and **2 outpatient flu cases** reported during week 15, a slight increase compared to week 14. **WCO had 176 times more hospitalizations (1,941) by week 15 during the 2019-2020 flu season.** Overall, WCO's flu activity is low.

**Ohio (Week 15):** Current Activity Level - Minimal

**Three (3) influenza hospitalizations** were reported during week 15; a total of 118 hospitalizations have been reported so far during the 2020-2021 season. **Ohio had 95 times more flu hospitalizations (11,145) at this time last season.** Emergency department data are not reported this week as Ohio transitions between syndromic surveillance data vendors. ODH Lab Specimen Results – **0 Flu A(H1N1), 0 Flu A(H3N2), 1 Not Subtyped Flu A, 0 Flu B.**

**National (Week 15):** Seasonal influenza activity remains unusually low throughout the United States. Public Health Lab Specimen Results (**243**) – **7% Flu A(H1N1), 9% Flu A(H3N2), 45% Not Subtyped Flu A, 39% Flu B.**

For hospitals and other regional healthcare facilities to more accurately monitor influenza in the area, this report will include regional and Montgomery County specific influenza activity. The regional influenza report will include positive influenza cases from healthcare facilities in Auglaize, Butler, Champaign, Clark, Darke, Greene, Miami, Montgomery, Preble, Shelby, and Warren counties (<http://www.gdaha.org/regional-hospital-locator>).

### Confirmed Influenza-associated Hospitalizations

MMWR Week	40-12*	13*	14*	15*	2020-2021 Flu Season Total as of 4/23/21
Week Ending	10/3 – 3/27	4/3/21	4/10/21	4/17/21	
Auglaize	0	0	0	0	0
Butler	1	0	0	0	1
Champaign	0	0	0	0	0
Clark	0	0	0	0	0
Darke	1	0	0	0	1
Greene	1	0	0	0	1
Miami	1	0	0	0	1
Montgomery	4	0	0	0	4
Preble	0	0	0	0	0
Shelby	0	0	0	0	0
Warren	2	0	0	1	3
<b>Total WCO Region</b>	<b>10</b>	<b>0</b>	<b>0</b>	<b>1</b>	<b>11</b>

\*Numbers may change based on updated ODRS data.

## Weekly Regional Outpatient Influenza Cases

MMWR Week	Week Ending	Influenza A	Influenza B	ILI* Reports (Sentinel Providers)	Weekly Total
40-12	10/3/ - 3/27	33	7	2	42
13	4/3/21	1	0	0	1
14	4/10/21	0	2	0	2
15	4/17/21	1	1	0	2
<b>Season Total**</b>	NA	<b>35</b>	<b>10</b>	<b>2</b>	<b>47</b>

\*Influenza-like Illness (ILI)

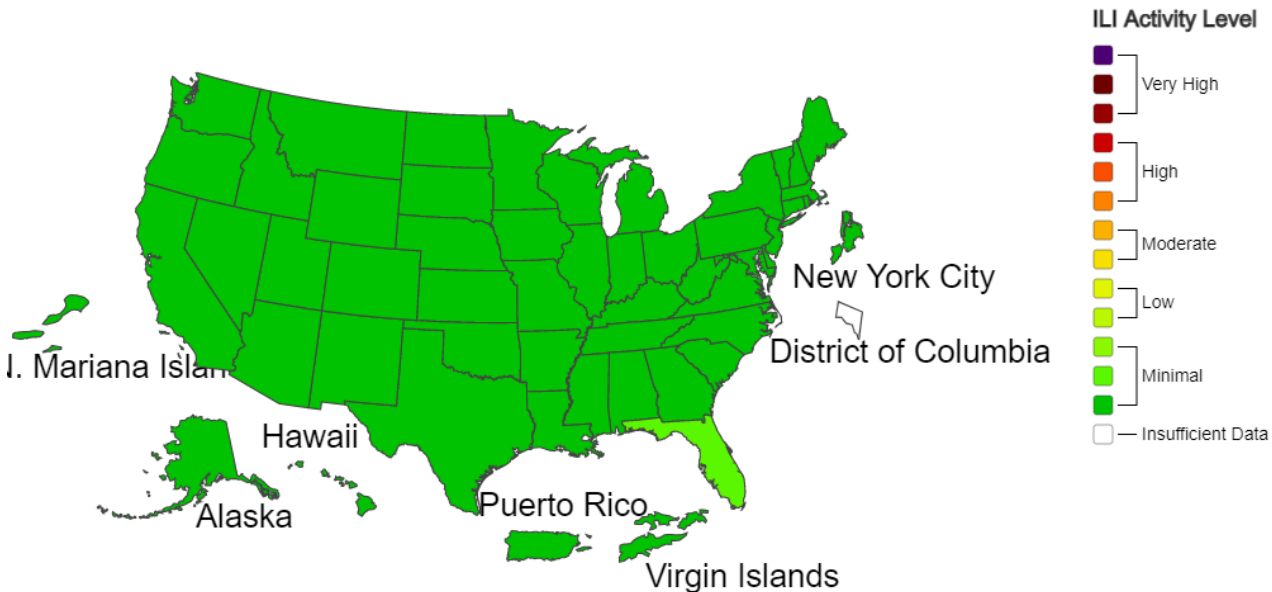
\*\*Note. Data are incomplete. Several hospitals have not submitted outpatient data.



### A Weekly Influenza Surveillance Report Prepared by the Influenza Division

Influenza-Like Illness (ILI) Activity Level Indicator Determined by Data Reported to ILINet

2020-21 Influenza Season Week 15 ending Apr 17, 2021



\*This map uses the proportion of outpatient visits to healthcare providers for influenza-like illness to measure the ILI activity level within a state. It does not, however, measure the extent of geographic spread of flu within a state. Therefore, outbreaks occurring in a single city could cause the state to display high activity levels.

National Influenza Activity Summary <http://www.cdc.gov/flu/weekly/fluactivitiesurv.htm>

### Additional Surveillance Data & Flu Facts

Flu Facts <http://www.flu.gov/>



Ohio Department of Health Seasonal Influenza Activity Summary <https://odh.ohio.gov/wps/portal/gov/odh/know-our-programs/seasonal-influenza/ohio-flu-activity/>

Montgomery County Seasonal Influenza Activity Summary <http://www.phdmc.org/report/montgomery-county-flu-activity-level>



## Montgomery County Seasonal Influenza Activity Report MMWR Week 15 4/11/2021 – 4/17/2021

### Montgomery County Weekly Surveillance Data

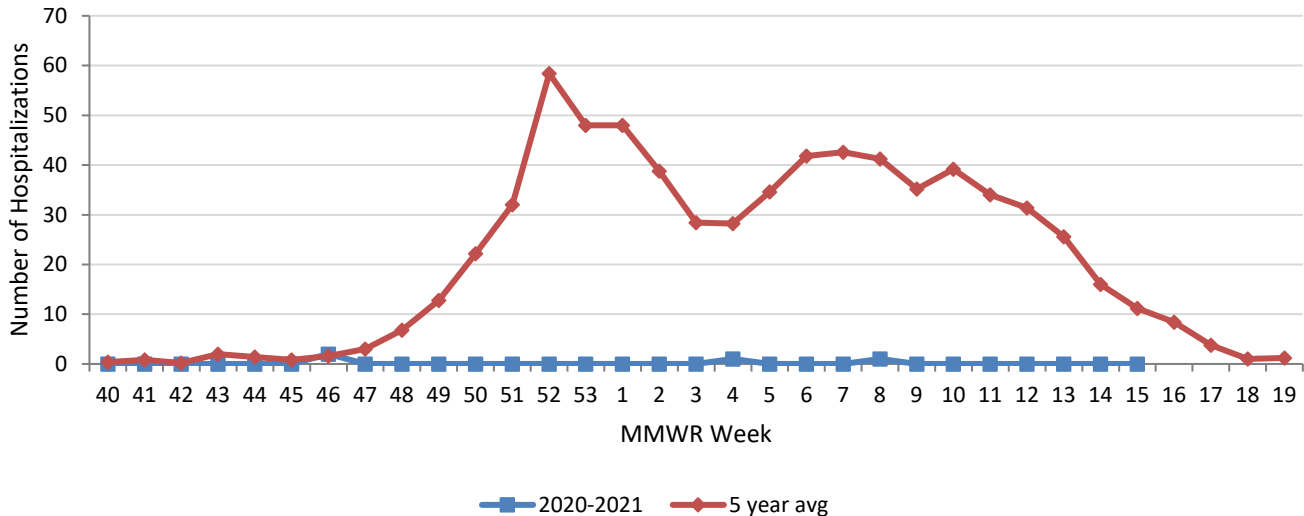
Surveillance Data	Current Week	% Change	Trend
Influenza Hospitalizations	0	-	
% Constitutional ED visits	**	**	NA
% Fever & ILI ED visits	**	**	NA
Thermometer sales	74	-	

\*Percent changes based on small numbers may give misleading information about flu activity.

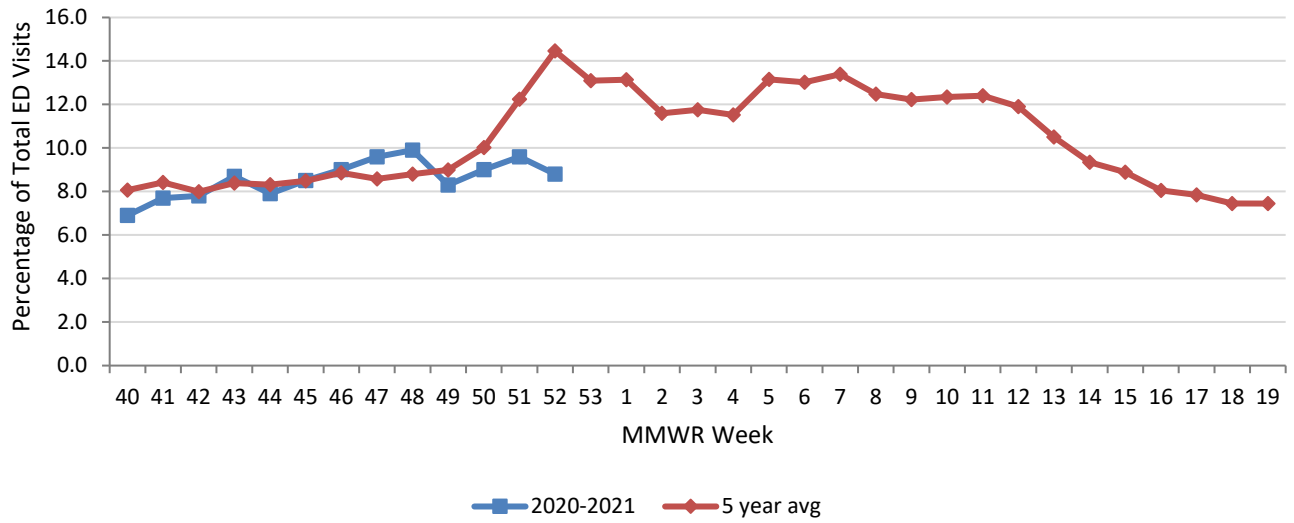
\*\* ED data are not reported this week as Ohio transitions between syndromic surveillance data vendors.

Dash (-) indicates no change

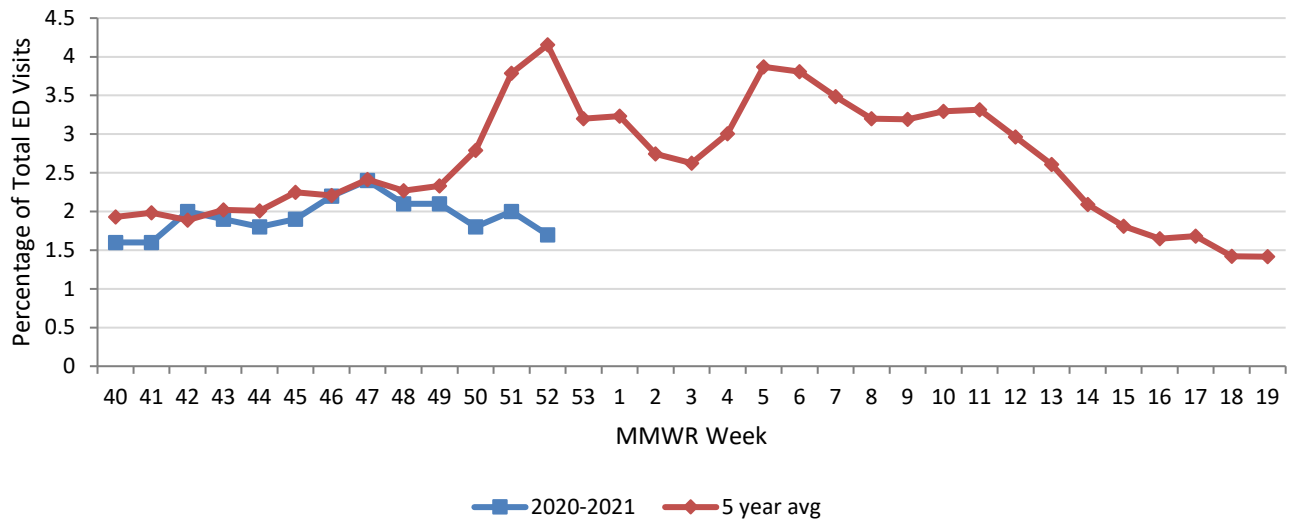
### Montgomery County Confirmed Influenza-associated Hospitalizations by MMWR Week with 5-Year Baseline Average; 2020-2021



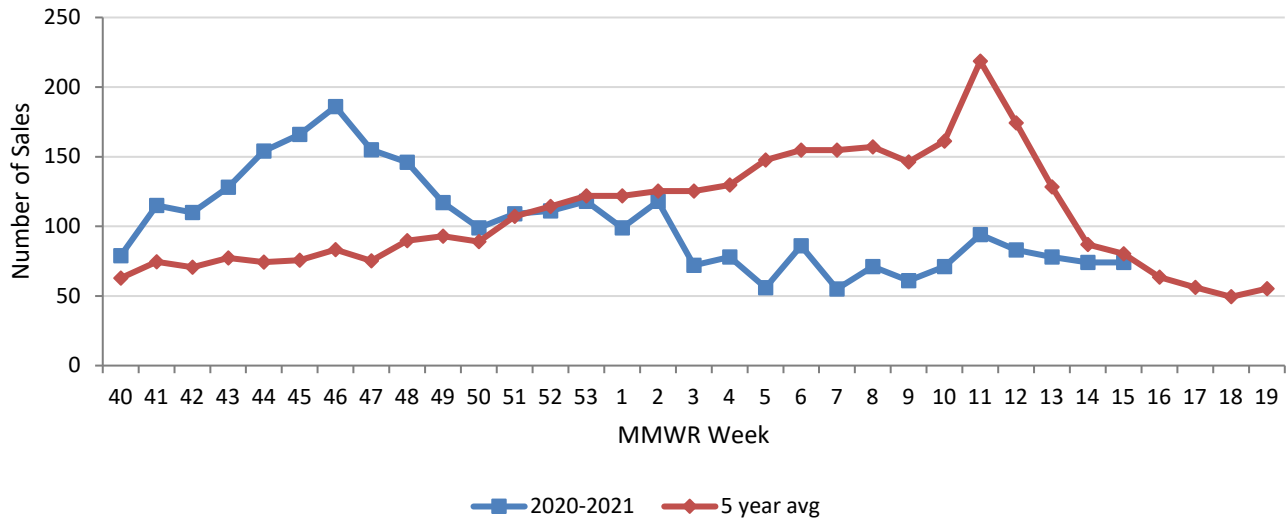
### Montgomery County Constitutional ED Visits by MMWR Week with 5-Year Baseline Average; 2020-2021



### Montgomery County Fever & ILI Specified ED Visits by MMWR Week with 5-Year Baseline Average; 2020-2021



## Montgomery County Thermometer Sales by MMWR Week with 5-Year Baseline Average; 2020-2021




---

### Sources of Influenza Surveillance Data

Six types of data sources are examined on a weekly basis to help determine the influenza activity level for Montgomery County:

**National Retail Data Monitor (NRDM)-OTC Drug Purchases:** The NRDM collects over-the-counter (OTC) drug sales information from approximately 80 Montgomery County chain drug stores and grocery stores. For influenza surveillance, thermometer sales are monitored on a weekly basis.

**Emergency Department Visits (EpiCenter):** EpiCenter collects emergency department chief complaint data from hospitals and urgent care facilities across Ohio counties in real time and classifies them into symptom and syndrome categories. Chief complaints from the constitutional syndrome category and the ILI + Fever symptoms classifier are analyzed for influenza surveillance.

**Sentinel Providers (ILINet):** Sentinel providers, through the US Influenza-like Illness Surveillance Network (ILINet), collect outpatient ILI data. ILI is defined as a fever (> 100 °F), **and** cough and/or sore throat without another known cause. Providers report the total number of patients seen and the number of patients with ILI by age group on a weekly basis. Sentinel providers also submit specimens for influenza testing to the ODH laboratory throughout the influenza season.

**Laboratory Surveillance:** Positive laboratory reports are forwarded to local health departments. Generally, specimens are submitted by health care providers or hospitals.

**Influenza-associated Hospitalizations (ODRS):** Influenza-associated hospitalizations are reported to local health departments for entry into the Ohio Disease Reporting System (ODRS). Hospitalizations can be used as an indicator of the severity of illness during a particular influenza season. This condition became reportable in 2009.

**Influenza-associated Pediatric Mortality (ODRS):** Influenza-associated pediatric mortalities are reported to local health departments for entry into ODRS. Pediatric deaths can be an indicator of the severity of illness during the influenza season. This condition became reportable in 2005.

---

For further information or questions, please contact Public Health – Dayton & Montgomery County, Epidemiology Department at [epi@phdmc.org](mailto:epi@phdmc.org) or 937-224-3691.